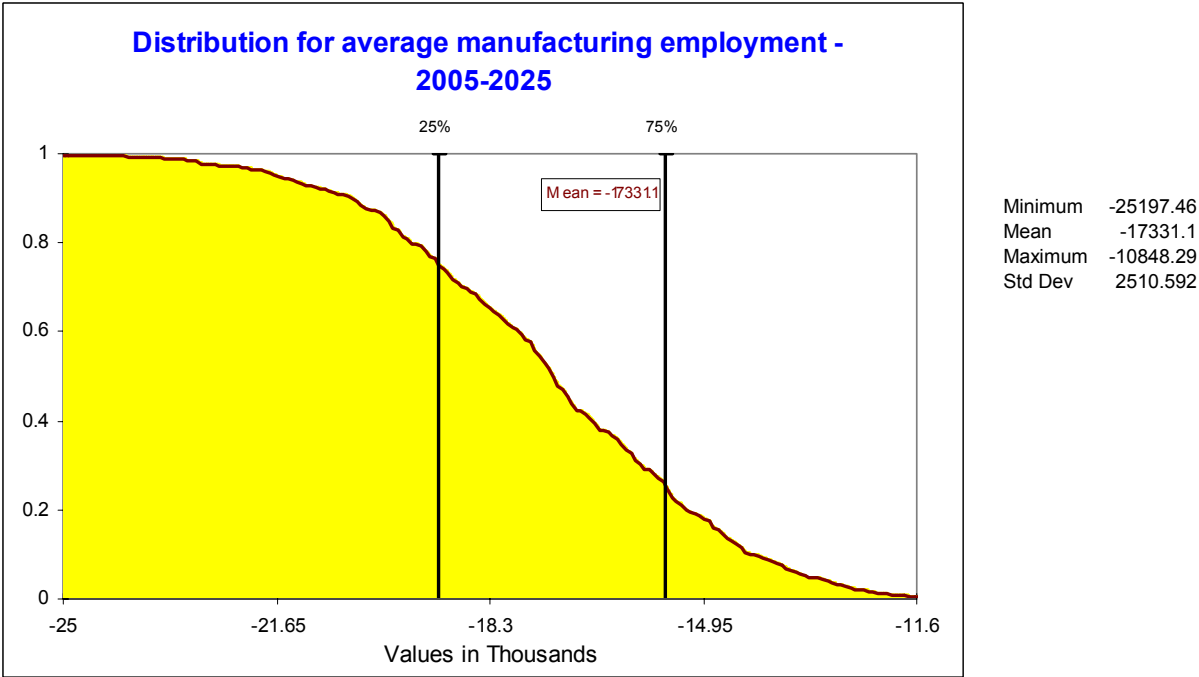

Manufacturing employment

The two figures attached show the impact on manufacturing employment. The data corresponds to the total employment indicators. They are:

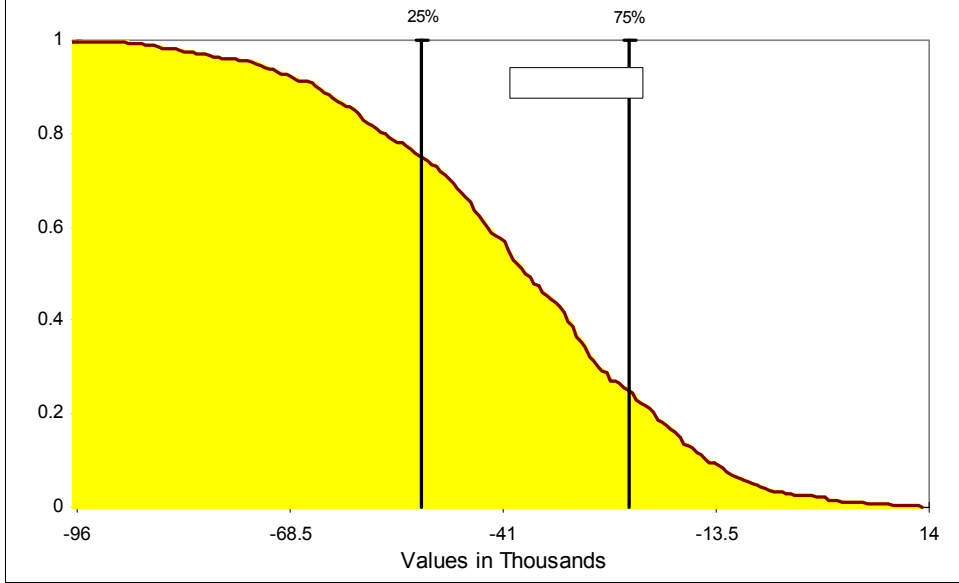
The average change from what would otherwise be the case over the period; and

The change from what would otherwise have been the case for the 2025 year.

In comparison with the total employment estimates, it has to be kept in mind that the manufacturing employment is mostly full-time, while the balance (or total employment less manufacturing) by 2025 has to be discounted by around 40 per cent to bring it to the full-time equivalent standard. That is, in terms of the quality of employment positions lost because of the AUSFTA, the manufacturing share is greater than what would be suggested by a straight numbers comparison.



Distribution for manufacturing employment - 2025



Minimum -97095.98
Mean -38809.85
Maximum 13208.46
Std Dev 19804.55