

**SENATE FOREIGN AFFAIRS, DEFENCE AND TRADE
REFERENCES COMMITTEE**

**INQUIRY INTO PAPUA NEW GUINEA AND THE
ISLAND STATES OF THE SOUTH-WEST PACIFIC**

SUBMISSION

Submission No: 72

Submittor: Association of Solomon Islands Manufacturers

Contact: Mr John Vollrath
Chairman

Address: PO Box 1870
HONIARA SOLOMON ISLANDS

Tel: (677) 24982

Fax: (677) 24984

Email: stp@solomon.com.sb

No. of Pages: 2

Attachments: 1

**Association of
Solomon Islands
Manufacturers**

Association of Solomon Islands Manufacturers,
P.O. Box 1870,
Honiara,
Solomon Islands.

Telephone: (677) 24982
Facsimile: (677) 24984
Email: stp@solomon.com.sb
Secretary: Ph: (677) 30304
Fax: (677) 30685
Email: solnoodle@solomon.com.sb



28th May 2003

To,
The Honorable Australian Senators visiting Honiara.

As Chairman of the Manufacturers Association of Solomon Islands,
I welcome the opportunity to present this paper. I am sorry I cannot attend this
luncheon as I am still recovering from major surgery here in Honiara.

I would like to thank the Australian taxpayers for their contribution through Aus-Aid
and the CPRF project for the opening of the road from Honiara to West Guadalcanal
Lamby.

Aus-Aid provided the logistic support with the local communities for labour. This is a
local community initiative put together by 2 Chiefs, David Humphries and Joseph
Tausuli.

The project started October 2002, since then there has been 25 village people working
continuously for 5 days with no pay. There has been up to 10, 3 tonne trucks carting
gravel for road patching and concrete works.

The photos show the concreting of the causeway of the Maravovo River. The area is
known as Selwyn College crossing. This entire road project is being overseen by a
Solomon Island engineer, Martin Wale.

Joseph Tausuli has provided a CAT 980 loader (pictured), a D60 bulldozer and a log
skidder where necessary. Gold Ridge Mining Co. has provided a CAT grader and
excavator for the project. Aus-Aid has provided fuel and some spare parts for all the
machinery and a small wage for the drivers. But everybody else on the project are
volunteers. There is still some work to do on the bridges and drainage and gravelling
on a 1 kilometre steep hill. And then the work will be finished at the end of July 2003.

This has been a huge undertaking by the community to put this road back into service after the war. The benefit to the rural area of west Guadalcanal is huge, already the once dormant copra industry is starting to re-establish because of being able to get their copra to the buyers in Honiara. There is between 80 and 100 bags of copra a day, which represents \$8,000 going back to the communities.

To you, The Honourable Senators of this fact-finding mission, again I say thank you. This pilot project has been successful and we are looking forward to similar projects to be repeated to other areas.

Yours faithfully,

A handwritten signature in cursive script, appearing to read "J. Vollrath".

John Vollrath
Chairman

Association of Solomon Islands Manufacturers

Association of Solomon Islands Manufacturers,
P.O. Box 1870,
Honiara,
Solomon Islands.

Telephone: (677) 24982

Facsimile: (677) 24984

Email: stp@solomon.com.sb

Secretary: Ph: (677) 30304

Fax: (677) 30685

Email: solnoodle@solomon.com.sb

** Financial Members at present for year 2003 (Highlighted)

Company	Contact Person	Fax:	Tel:	No. of Staff	Main Activity
Goodman Fielders	Steven Bright	30399	30146	250	Food/Flour Mill
Asian Paints	Sunil Basale	30429	30484/5	25	Paints
Soltai – Mundu	David Byrom	23462	21664	300	Fish/Cannery
Islands Road Works	Steven Wasi	39068	39062	25	Road Works/Construction
Solomon Tropical Products	John & Betty Vollrath	24984	24982	30	Clothing/Coconut Products
Solomon Soaps	John Warden	39958	30266	50	Soaps & Toiletries
Solomon Islands Tobacco Co	Bill Tyson	30463	30127	250	Tobacco
Hocking Construction & Joinery	Peter Hocking	39357	39337	20	Building Construction Works/Furniture
Solomon Breweries Limited	Lafaele Ngau-Chun	30852	30257	300	Beverages & Soft-Drinks
R&R Engineering	Janita Redford	30279	30441	60	Engineering
Szetu Enterprises	Kant Szetu / Peter Tam	30685	30304	40	Food & Beverages/Pet Bottles
Quality Foods	Margaret Reiher	30643	30157	50	Food/Plastic/Pet Containers
Jango Fashions	Benz Hung	23777	23384	20	Clothing & Retailer
Cruz Marketing	Ivan Dyer	30707	30322	30	Timber
PKR Pacific Sales Limited	William Tokatake		30143	30	Hardware
Island Manufacturing	Brent McRae	38243	38243	20	Furniture
Aussie High Commission Secretary for Economics	Tim Bolotnikoff	23691	21561 Ext 226		
Oceanic Marine Equipment	Albert Wong	30650	30649	20	Engineering
Solomon Sheet Steel Limited	Antonio Lee	21696	22446	40	Engineering Works/Construction
Liapari Limited	Noel Hudson	30441		60	Engineering
AIP Limited	Kevin Trueman	26468	26404	30	Timber
Direct Management Limited	Solomon Ilala		30926	30	Copra Mill
Sullivans/Nambawan Meat	Nick Constantine		21643	30	Meat Processors/Retailer
Boronia Meat Service/Marovo Trading Ltd.	Dudley Hirata		22346 70715	30	Meat Processors/Honey/Handicrafts
Tongs Corporation Limited	Kenny Tong/Joe Sika	38181	38182	250	Hardware/Construction
UMW Limited	Richard Mumby	30464	30171	60	Precision Hardware



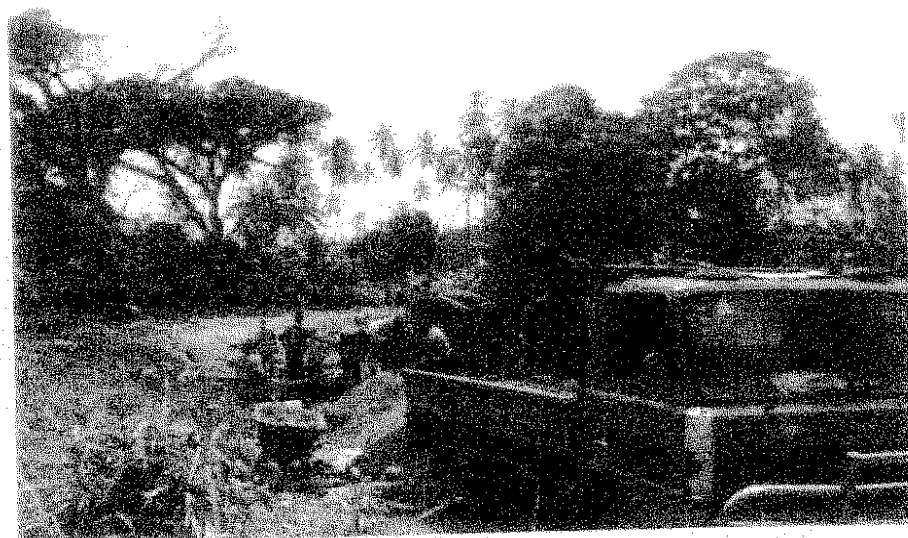
Maravovo Ford - Mixing concrete.



Casting insitu concrete.



Gabion works to the Foundation



Unloading of gravell for conc. works.

Gravell from Visale

MARAVOVO FORD RECONSTRUCTION WORKS

