

Jurjevic, Dijana (SEN)

From: Mick Jerram [mick.ablent@bigpond.com]
Sent: Tuesday, 15 November 2005 7:10 PM
To: EET, Committee (SEN)
Subject: Senate Inquiry into Waste Dump - No Visit to the NT!

**Subject - Proposed Nuclear Repository in the Northern Territory**

Dear Senator,

Gecko Canoeing is a family owned and run, small business operating in Katherine. We are an Award Winning, Ecotourism Accredited business, winning the Northern Territory Tourism Awards 3 years running for the Ecotourism Category. Ecotourism is a major part of who we are and what we do, the environment is our product.

The Northern Territory has always been known for its Ecotourism and Nature Based products, just look at the vehicle licence plates: NT - Nature Territory! The perception of this Nature Territory would change immediately if there were to be a Nuclear Repository anywhere throughout the NT. Once perceptions change and information spreads, visitor numbers decline and the tourism operators, accommodation owners, cafes and restaurants, right down to the shop that sells spare parts for caravans will be affected. Who would want to canoe on a river that is only 40 kms away from a Nuclear Repository, who would want to swim in a beautiful Thermal Spring just down the road? This will affect visitation to the NT, our region, the licence plates will read NT - Nuclear Territory!

We are a small business, as are many other businesses in the Katherine Region, the number of guests that come through our door totals about 300 per year. If visitor numbers were to be affected in the NT, this could hurt us quite seriously. Other small businesses in the region relying on the good word about the NT would also be affected, we cannot afford this. We all rely on both Domestic and International travellers coming to our region. We are already hearing negative comments from the visitors around town, about how it would affect their decision to visit again in the future and about how they believe visitation will decrease. It is a form of bad publicity, we all know that bad publicity and bad word of mouth travels so much faster.

Just think about the new catch cry of the NT - Nuclear Territory. We want the NT to be a world renowned tourist hot spot for Nature Based Tourism and Ecotourism. We have the capabilities, we have the assets, Kakadu, Litchfield, Gregory, Nitmiluk, Keep River, Flora River, don't spoil it by adding a Nuclear Repository, it will be a stain on the Tourism Industry. We cannot afford to have something like this in our backyard, Tourism is a major industry in the NT that involves a lot of local people who have a passion for the Environment and Nature. Look after the little people, listen to the little people and support Territorians by rejecting the Nuclear Repository.

Sincerely,

Jennifer Child

GECKO CANOEING

Katherine Northern Territory
Australia



Photographer Mike Lyon

Environmental Immersions in Tropical Savannah River Systems



Image by Peter Eys

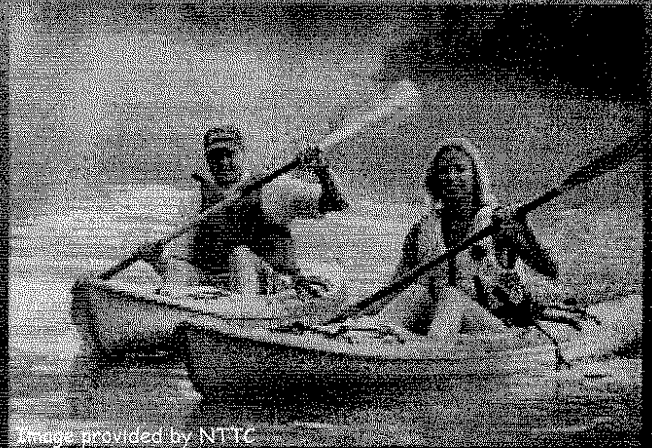


Image provided by NTTC

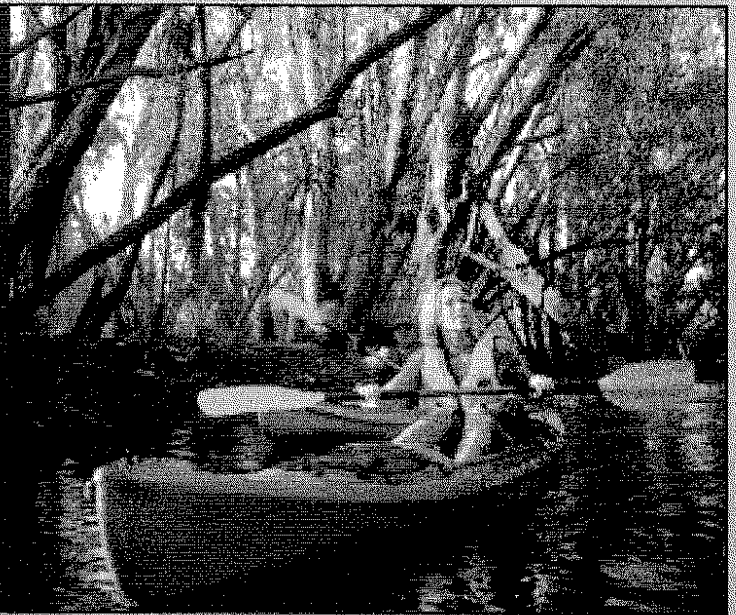


Fully qualified and highly accredited guides

More and more people are looking for a holiday with a difference, a wilderness escape, a chance to reach out and feel the environment. At **GECKO CANOEING**, our aim is to provide a unique and memorable experience.

Away from the tourist crowd we follow ancient and unique rivers through an ever changing landscape. Featuring superb river scenery, gently flowing rapids, and diverse flora and fauna, all tours are fully guided.

The majority of **GECKO CANOEING** tours occur outside of the National Parks, away from the tourist crowds.



JUST THE RIGHT MIX OF BACK TO NATURE AND CIVILISED COMFORT

We work hard to make your stay more of a 'great experience' than a tour. Qualified and accredited guides and top quality equipment, combine this ethos with our pristine destinations and the result is a holiday you may never forget!



AWAY FROM THE TOURIST CROWDS



KATHERINE RIVER

This river rises in Arnhemland and cuts through the rugged sandstone region of Kakadu and Nitmiluk Parks. We tour below the gorges, where it is fed by springs and soaks all year round. The river flows gently over small sparkling rapids, through shady paperbark forests and lush pandanus channels. Camp under the stars next to clear shallows on sandy beaches

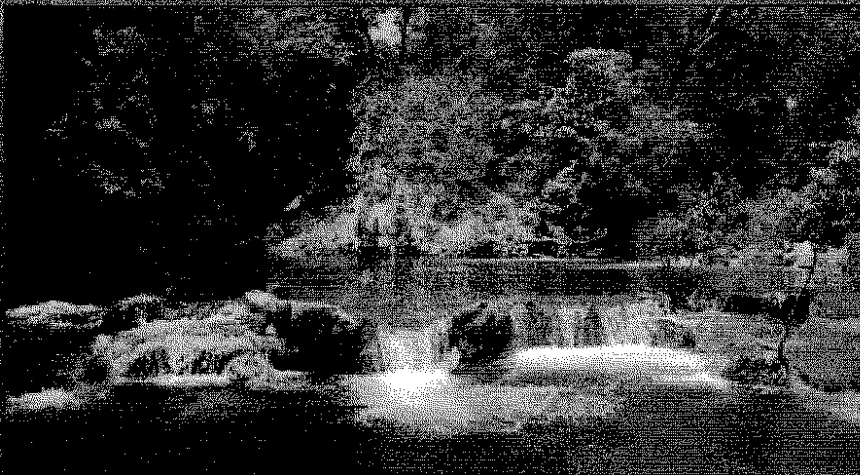
DEEP IN THE TROPICAL SAVANNAH OUTBACK

DALY RIVER

True wilderness safaris in the upper Daly River, away from immediate civilisation and deep in the tropical savannah outback. Down an everchanging landscape, through deep and shallow stretches of sand filtered 'sweetwater' and onto the most pristine campsites you may ever encounter.



UNIQUE AND MEMORABLE EXPERIENCES



FLORA RIVER

Jewelled calcite karst 'tufa dams' link deep, clear emerald coloured pools. The river flows through pristine wilderness. Feel the significance of this environment and understand the bond that people have had with this area for thousands of years.

SAMPLE TOURS AVAILABLE

- 1 DAY - Katherine or Flora River snapshots
- 3 DAY - Katherine River Safari
- 5 DAY - Explorer
- 6 DAY - 'Best of Both' Katherine/Daly River
- 7 DAY - Katherine/Flora/Daly Rivers wilderness immersion

TOUR INFORMATION

TOURS COMMENCE:

April/May each year. Tours run throughout the 'Dry' season and finish October/November. A tour booking and departure date is only a phone call away.

DESTINATIONS:

The Katherine/Flora/Daly river system remains as our key destination, with the majority of tours being over 3 or 6 days. Other fantastic tours include: 4 days on the Waterhouse and Little Roper, 5 to 8 days on the Wilton, 4 to 10 days on the Baines, Wickham and Victoria, just to name a few.

WE SUPPLY:

- Access to a relaxing and stress free environment
- The opportunity for our guests to have a unique and memorable experience
- Personal attention and instruction
- Interpretation of natural features, environments and ecosystems
- All meals - good fresh food and plenty of it
- Free transfers to and from Katherine accommodation and transit centres including storage of vehicles and gear
- Canoes/kayaks, all paddling and safety equipment, waterproof containers and bags
- Camping swags, sheets, pillows and sleeping bag
- All camping facilities whilst on the river

YOU BRING:

Hat, towel, sunscreen, sunglasses, clothing, camera, personal items, favourite bottle of wine or spirit... and your adventurous spirit.

GROUPS:

A maximum of 8 people per group ensures an easily handled and safely administered group. Larger groups are catered for on request. A minimum client number of 1 allows for fast booking and departure confirmation. Contact with Guide(s) and experiencing natural river features are enhanced with a small group.

ENVIRONMENT:

Tropical Savannah river systems are the chosen medium for touring. The surrounding environment is varied and beautiful, with tours being structured to maximise client experience. Destinations are deliberately chosen to be away from regularly accessed areas, whilst striving to meet the client needs. All tours are run in an environmentally sustainable way and every effort is made to protect the surrounding ecosystems.

WEATHER:

Dry Season day time temperatures range from 25°C to 34°C, whilst the nights are cool and calm. During the coolest months of June and July, night time temperatures can drop below 8°C.

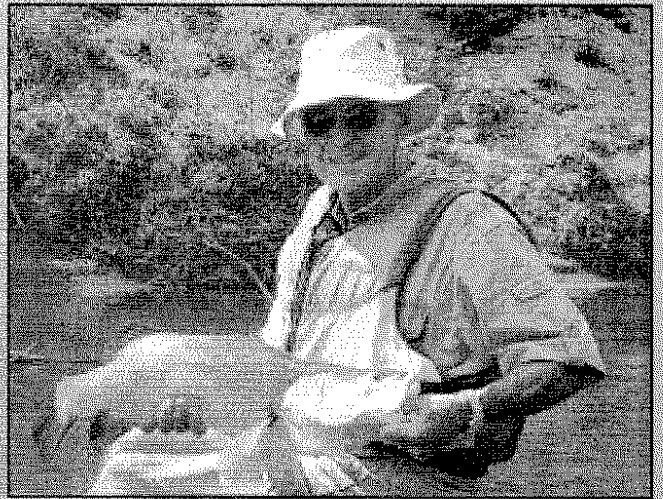
CONTACT INFORMATION

PO Box 2148, Palmerston NT 0831, AUSTRALIA
Ph: 61 8 8972 2224 Fx: 61 8 8972 2294
tours@geckocanoeing.com.au
www.geckocanoeing.com.au



In partnership with
Specialising in Corporate and
Organisational experiences.

"a drop of experience... an ocean of possibility"



INFORMED CONSENT AND DISCLOSURE:

We are obliged to inform you of the possible risks, hazards and conditions of the tours. You will be asked to complete an 'acknowledgement of advice' form prior to participation on the tour. You will not be asked to waive your rights as a consumer under the Trade Practices Act.

You will also be required to disclose any irregular mental and physical conditions and your swimming ability, along with emergency contact details.

We operate in remote areas and are therefore isolated from professional medical facilities. This information is imperative, in order for your guide to control arising incidents.

HEALTH & RESPONSIBILITY:

Spare medications should be carried. Fitness levels need not be high although a medium level would be beneficial. Prior camping, outdoor or paddling experience "is not" required.

All guides are suitably experienced and qualified. We do recommend that our guests have appropriate personal and property insurance cover.

Communication systems are carried in case of emergencies.

It is in our best interest to provide you with the safest and most enjoyable tour possible and every effort is made to ensure this.

GENERAL CONDITIONS:

Subject to unforeseen circumstances or inclement weather conditions, Gecko Canoeing reserve the right to cancel or alter tour dates and itineraries. We regret that any expenses incurred by guests as a result of the above is not a responsibility of Gecko Canoeing.

Cancellation policy: 48 hours or less prior to departure 100% of tour cost

14 days to 48 hours prior to departure 50% of tour cost

BOOKINGS:

Made through: Tourism Top End, KRITA, Territory Discoveries Agent or Local Travel Agent. Bookings and confirmations are made on receipt of 50% deposit. The GECKO CANOEING website offers an alternative booking and information centre. Direct bookings can be made at the GECKO CANOEING office.

COSTS:

Please ask your agent, or contact the Gecko Canoeing office for this seasons' rates. Child rates and private charter rates are also available. Our costs are in Australian Dollars and GST inclusive.

AGENTS STAMP: