



NSW students campaigning in favour of universal student unionism

Appendix 2

SURVEY OF CAMPUS

STUDENT ORGANISATIONS



From Melbourne University Drama Festival 2004

Australian Catholic University

Student Organisations:

Australian Catholic University National Students Association (overall university, member of Australian University Sport)

McCaulay Student Representative Council (Brisbane)

McKillop Student Representative Council (North Sydney)

Strathfield Student Representative Council (Mt St Mary, NSW)

Singadou Student Representative Council (Canberra)

St. Patricks Student Representative Council (Melbourne)

Aquinas Student Representative Council (Ballarat)

Fee Levels: \$40 per unit (\$320 for normal full time year), \$55 per semester for distance students (\$110 for normal full year) - 2005

Membership Opt-Out Provisions: Is requirement of enrolment but can opt out by writing letter to Manager, Student Fees

Services Provided:

(18 of the AVCC 's 45 servic categories):

Sporting Facilities

Student Lounges

Leisure Activities

Student Development Courses

Concerts

International Student Services and Advice

Student Employment Service

Welfare Services

Representation on University Bodies

Social Activities

Campus Sports

Facility Upkeep and Maintenance

Interest Clubs and Societies

Sporting Clubs and Societies

Bars and Bistros

Conference and Meeting Rooms

University Games

Academic Advice and Advocacy

Adelaide University

Organisations:

Adelaide University Union

Students Association of University of Adelaide (NUS member)

International Students Association (NLC member)

Postgraduate Student Association (CAPA member)

Sports Association (AUS member)

WAITE Insitute Students Asociation

Roseworthy Agricultural Campus Student Union Council



In 2004 the Adelaide University Union set up the Computer Resource Centre which incorporates the Resource Centre and a general computing suite. Newly renovated and boasting state of the art equipment, the Computer Resource Centre provides a number of services useful to students – all are very cheap, or even free.

Fee Levels: student service fee weighted by enrolment load: full time annual fee \$326.70 (2004)

Membership Opt-Out Provisions: Is requirement of enrolment but can opt out by writing a letter to Student Association President, decision by majority of fee committee

Services Provided:

(39 of the AVCC's 45 service categories)

- Student Accommodation
- Binding Services
- Catering and Food Service
- Student Theatre
- Sporting Facilities
- Student Lounges
- Computer Facilities
- Shower, Change and Locker Facilities
- Leisure Activities
- Student Development Courses
- Concerts
- International Student Services and Advice
- Student Employment Service
- International Clubs
- Campus Radio or TV
- Travel Service
- Trips and Tours
- Discount Ticketing
- Function Spaces
- Welfare Services
- Representation on University Bodies
- On Campus shops
- Social Activities
- Photocopy Service
- Campus Sports
- Gymnasiums
- Cinemas and Theatres
- Facility Upkeep and Maintenance
- Interest Clubs and Societies



The Adelaide University Cricket Club has teams playing in competitions ranging up to the A-Grade District (the highest competition in SA). The Sports Association administers the university's comprehensive network of sporting grounds for cricket, football, soccer, lacrosse, hockey, tennis and rowing

Information and Enquiry Service
Bookshops and Retail Outlets
University Diary
Campus Media/Student Newspapers
Legal Services
Sporting Clubs and Societies
Bars and Bistros
Conference and Meeting Rooms
University Games
Academic Advice and Advocacy

Australian National University

Organisations:

ANU Students Association (NUS and NLC member)
Postgraduate and Research Students Association (CAPA member)
ANU Sports and Recreation Association (AUS member)
ANU Union

Fee Levels: General Service fee full time annual for 2005 is \$220

Membership Opt-Out Provisions: Not requirement of enrolment, advise associations of objections

(33 of the AVCC's 45 service categories)

Binding Services
Catering and Food Service
Student Theatre
Sporting Facilities
Student Lounges
Shower, Change and Locker Facilities
Leisure Activities
Concerts
Student Employment Service
International Clubs
Travel Service
Discount Ticketing
Function Spaces
Dental Services
Welfare Services
On Campus shops
Social Activities
Photocopy Service
Campus Sports
Gymnasiums
Facility Upkeep and Maintenance
Recreational Libraries
Computer Facilities
Interest Clubs and Societies
Art Galleries
Information and Enquiry Service



The living heart of the campus - ANU Union Building and Courtyard

Bookshops and Retail Outlets
Campus Media/Student Newspapers
Legal Service
Sporting Clubs and Societies
Bars and Bistros
Conference and Meeting Rooms
Academic Dress



The University of Ballarat Students' Associations runs professional daytime childcare facilities for children aged 0-6 at the Mt.Helens campus

Ballarat University

Organisations:

University of Ballarat Students' Association (NUS, NLC and AUS member)

Fee Levels: 2005 Annual Fee is \$258 for full time, \$106 for part-time and \$63 for limited time

Membership Opt-Out Provisions: Not requirement of enrolment, opt out tick box on enrolment form

Services Provided (32 of the AVCC's 45 service categories)

Catering and Food Service
Student Theatre
Sporting Facilities
Student Lounges
Computer Facilities
Shower, Change and Locker Facilities
Leisure Activities
Concerts
Student Employment Service
International Clubs
Childcare
Trips and Tours
Discount Ticketing

Welfare Services
 Representation on University Bodies
 On Campus Shops
 Social Activities
 Photocopy Service
 Campus Sports
 Gymnasiums
 Facility Upkeep and Maintenance
 Interest Clubs and Societies
 Art Galleries
 Information and Enquiry Service
 Bookshops and Retail Outlets
 University Diary
 Campus Media/Student Newspapers
 Sporting Clubs and Societies
 Bars and Bistros
 Conference and Meeting Rooms
 University Games
 Academic Advice and Advocacy

Canberra University

Organisations:

UC Students' Association (NUS and NLC member)
 UC Union (AUS member)
 Clubs and Societies
 Postgraduate Association (CAPA member)

Fee Levels: \$135 per semester (\$270 per year), external students \$37 per year (\$74 per year) - 2004

Membership Opt-Out Provisions:

Requirement of enrolment but can opt out by letter to Director, Student Administration

Services Provided (35 of the AVCC's 45 service categories)

Student Employment Service
 Catering and Food Service
 Student Theatre
 Sporting Facilities
 Student Lounges
 Shower, Change and Locker Facilities
 Leisure Activities
 Student Development Courses
 Concerts
 International Student Services and Advice
 International Clubs



University of Canberra Students' Association provides free academic rights, welfare and legal advice to UC students

Campus Radio or TV
 Childcare
 Discount Ticketing
 Function Spaces
 Dental Services
 Welfare Services
 Representation on University Bodies
 On Campus shops
 Social Activities
 Photocopy Service
 Campus Sports
 Gymnasiums
 Cinemas and Theatres
 Facility Upkeep and Maintenance
 Interest Clubs and Societies
 Information and Enquiry Service
 University Diary
 Campus Media/Student Newspapers
 Legal Services
 Sporting Clubs and Societies
 Bars and Bistros
 Academic Dress
 University games
 Academic Advice and Advocacy



Orientation Week at U Can. Over 50 sporting, religious, cultural, faculty, social and political clubs vie for members

Central Queensland University

Organisations:

CQU Students' Association (CAPA, AUS and NLC member) operating from Brisbane, Bundaberg, Gold Coast, Emerald, Gladstone, Mackay, Melbourne, Noosa, Sydney, and Rockhampton. The university also has campuses in Fiji, Singapore and Hong Kong

Fee Levels:

Membership Opt-Out Provisions: Is requirement of enrolment but there are opt out provisions

Services Provided (26 of the AVCC's 45 service categories)

Catering and Food Service
 Student Lounges
 Leisure Activities
 Concerts
 International Student Services and Advice
 Student Employment Service
 International Clubs
 Trips and Tours
 Discount Ticketing



In 2003 the CQU Students' Association won the Rockhampton Regional Development & Ergon Energy Business Excellence Awards. In 2002 it won the Rockhampton Chamber of Commerce Award for a 'Not for Profit Organisation'

Function Spaces
Welfare Services
Representation on University Bodies
On Campus shops
Social Activities
Photocopy Service
Campus Sports
Interest Clubs and Societies
Information and Enquiry Service
Bookshops and Retail Outlets
Campus Media/Student Newspapers
Legal Services



Graphic design students exhibit their work at The Charles Darwin University Students' Union Art Gallery

Sporting Clubs and Societies
Bars and Bistros
Conference and Meeting Rooms
University Games
Academic Advice and Advocacy

Charles Darwin University

Organisations:

Charles Darwin Student Union (NUS and CAPA member)
Sports Association (AUS member)

Operate at Casaurina and Palmerston campuses

Fee Levels:

Membership Opt-Out Provisions: is a requirement of enrolment, no opt out provision

Services Provided (16 of the AVCC's 45 service categories)
Catering and Food Service
Computer Facilities
Shower, Change and Locker Facilities
Leisure Activities
Welfare Services
Representation on University Bodies
On Campus shops
Social Activities
Photocopy Service
Gymnasiums
Cinemas and Theatres
University Diary
Campus Media/Student Newspapers
Sporting Clubs and Societies
University Games
Academic Advice and Advocacy



The National Campus Band Competition organised by student organisation activities officers around the country hits Darwin.

Charles Sturt University

Organisations:

Charles Sturt University Students' Association including campus associations at Canberra, Dubbo, Wagga Wagga (Rivcoll), Albury-Wodonga and Bathurst (is CAPA, AUS and NLC member)

2004 Fee Levels: \$34 per 8 units (internal and external), \$272 full time annual fee

Membership Opt-Out Provisions:

Requirement of enrolment, but can opt out on grounds of genuine conscientious objection

Services Provided (29 of the AVCC's 45 service categories)

Catering and Food Service

Student Lounges

Leisure Activities

Concerts

International Student Services and Advice

Student Employment Service

International Clubs

Campus Radio or TV

Trips and Tours

Function Spaces

Welfare Services

Representation on University Bodies

On Campus shops (Including second hand bookshop)

Social Activities

Photocopy Service

Campus Sports

Facility Upkeep and Maintenance

Interest Clubs and Societies

Art Gallery

Information and Enquiry Service

University Diary

Campus Media/Student Newspapers

Legal Services

Gymnasium

Sporting Clubs and Societies

Bars and Bistros

Conference and Meeting Rooms

Academic Dress



Beach Party at the very landlocked Wagga Wagga campus tavern (The Crow Bar). The university has a high number of residential students. The social events put on by campus bars play an important role in breaking down the isolation felt by students who have recently moved to a regional town.



New Students' Association building at Thurgoona campus. In conjunction with the Chaplaincy service, CSUSA provides an emergency food supply outlet at both Albury and Thurgoona campuses. The service is designed to help students who, for various reasons have no access to food in the short term.

Curtin University

Organisations:

Curtin University Student Guild (NUS, AUS, NLC and CAPA member)

Fee Levels: Annual Fee at Bentley, City, Kalgoorlie or Northam campuses is \$110 for full-time students and \$70 for part-time students; annual fee at Joondalup, Margaret River, Albany, Esperance, Geraldton is \$70 for full-time and \$45 for part-time, external students pay \$45

Membership Opt-Out Provisions: Not requirement of enrolment, can opt out on form accessible on university website

(note while the fee is compulsory the Guild only receives fee income in proportion to the number of students who decide to be members, the University retains the rest)

Services Provided (35 of the AVCC's 45 service categories)

Student Accommodation
Binding Services
Catering and Food Service
Student Lounges
Computer Facilities
Leisure Activities
Student Development Courses
Concerts
International Student Services and Advice
Student Employment Service
International Clubs
Childcare
Travel Service
Trips and Tours
Discount Ticketing
Function Spaces
Welfare Services
Representation on University Bodies
On Campus shops
Social Activities
Photocopy Service
Campus Sports
Facility Upkeep and Maintenance
Computer Facilities
Interest Clubs and Societies
Information and Enquiry Service
Bookshops and Retail Outlets
University Diary
Campus Media/Student Newspapers
Legal Services

Sporting Clubs and Societies
Bars and Bistros
Conference and Meeting Rooms
University Games
Academic Advice and Advocacy

Deakin University

Organisations:

Deakin University Students Association (CAPA, AUS and NLC member) at Melbourne, Geelong, Waterfront and Warrnambool sites

Fee Levels: \$130.50 per semester full time internal (\$261 full time annual), \$83.60 per semester part time internal, external domestic \$82.60 per semester, external overseas \$170.90, summer semester \$39.70

Membership Opt-Out Provisions: Not requirement of enrolment but Student Association must be satisfied that objection is conscientious

Services Provided (27 of the AVCC's 45 service categories)

Student Accommodation
Binding Services
Student Lounges
Leisure Activities
Concerts
International Clubs
Campus Radio or TV
Childcare
Travel Service
Trips and Tours
Discount Ticketing
Welfare Services
Representation on University Bodies
On Campus shops
Social Activities
Photocopy Service
Campus Sports
Interest Clubs and Societies
Information and Enquiry Service
Bookshops and Retail Outlets
University Diary
Campus Media/Student Newspapers
Sporting Clubs and Societies
Bars and Bistros
University Games
Academic Advice and Advocacy
Other



For many students starting university is associated with moving away from home. Deakin University Students Association employs professional housing advisers at its Burwood, Waurm Ponds, Waterfront and Warrnambool campuses to provide students with expert advice to address their housing needs.

Edith Cowan University

Organisations:

Edith Cowan Student Guild (NUS, NLC and CAPA member)

ECU Sports and Recreation (AUS member)

Fee Levels: \$100 full time annual, \$50 part time annual, \$30 external

Membership Opt-Out Provisions: Not a requirement of enrolment, there are opt out provisions, Student Guild receives proportion of fee equivalent to students who do not opt out

Services Provided (15 of the AVCC's 45 service categories)

Student Theatre

Leisure Activities

Concerts

International Clubs

Welfare Services

Representation on University Bodies

Social Activities

Campus Sports

Interest Clubs and Societies

Art Galleries

Information and Enquiry Service

Campus Media/Student Newspapers

Sporting Clubs and Societies

University Games

Academic Advice and Advocacy



ECU International Student Induction Session

The Edith Cowan University Postgraduate Association hosts the annual postgraduate student awards for staff excellence each year in order to give students the opportunity to nominate staff for excellence, and also to ensure that good staff receive recognition for their outstanding performance. Students can nominate staff for one or more of the following categories:

- (1) Excellence in Research Leadership.
- (2) Excellence in Research Supervision.
- (3) Excellence in Coursework Tuition and Supervision.
- (4) Excellence in Postgraduate Support

Flinders University

Organisations:

Flinders University Union,

Students' Association of Flinders University (NUS member)

Postgraduate Association (CAPA member),

Clubs and Societies Association

International Students Association (NLC member)

Sports Association (AUS member)



The Students' Association of Flinders University runs Australia's last student-run commercial printing press. Many classic and notorious political and music posters and album covers have been printed here since the late 1960s.

Fee Levels: \$362.80 full time annual,
\$216.60 part-time annual, \$68 external

Membership Opt-Out Provisions: Is requirement of enrolment but opt out provision for genuine conscientious objection

Services Provided (38 of the AVCC's 45 service categories)

Binding Services
Catering and Food Service
Sporting Facilities
Student Lounges
Computer Facilities
Shower, Change and Locker Facilities
Leisure Activities
Student Development Courses
Concerts
International Student Services and Advice
Student Employment Service
International Clubs
Campus Radio or TV
Childcare
Discount Ticketing
Function Spaces
Dental Services
Welfare Services
Representation on University Bodies
On Campus shops
Social Activities
Photocopy Service
Campus Sports
Gymnasiums
Facility Upkeep and Maintenance
Recreational Libraries
Interest Clubs and Societies
Information and Enquiry Service
Bookshops and Retail Outlets
University Diary
Campus Media/Student Newspapers
Legal Services
Sporting Clubs and Societies
Bars and Bistros
Conference and Meeting Rooms
Academic Dress
University Games
Academic Advice and Advocacy



Students from South Australia's three universities collaborate to put together the evening Student Radio component for Radio 5UV.

EMPLOYMENT SERVICE

The Flinders University Union operates an Employment Service to assist students in finding casual and part-time work all year round. This service has an excellent track record placing thousands of students in touch with job vacancies each year. The service can take up to 3,000 job requests each year and of course many jobs have more than one vacancy. Consequently, it is not unusual for the service to make over 5,000 successful placements a year.

Organisations: Student Representative Council (Logan, Mt. Gravatt, Nathan, Southbank) (NUS, CAPA, NLC member), Gold Coast Student Guild (AUS member)

*Campus Life Charge component of student service fee at Brisbane campuses does not go to a student run organization. Campus Life is run by the university administration.

Fee Levels: FULL TIME BRISBANE AND LOGAN: Campus Life Charge \$84 per semester, Student Representative Council Charge \$36 per semester; PART TIME BRISBANE AND LOGAN: Campus Life Charge \$42 per semester, Student Representative Council Charge \$18 per semester; EXTERNAL BRISBANE AND LOGAN: Campus Life Charge \$10 per semester, Student Representative Council Charge \$7 per semester; FULL TIME GOLD COAST: Student Guild Charge \$128 per semester, PART TIME GOLD COAST: Student Guild Charge \$64 per semester, EXTERNAL TIME GOLD COAST: Student Guild Charge \$18 per semester. (full time annual Brisbane and Logan \$240, Gold Coast \$256)

Membership Opt-Out Provisions: Not requirement of enrolment, can opt out by applying to Registrar

Services Provided (38 of the AVCC's 45 service categories)

Student Accommodation (run by Campus Life at Brisbane campuses)

Binding Services

Catering and Food Service (run by Campus Life at Brisbane campuses)

Sporting Facilities (run by Campus Life at Brisbane campuses)

Student Lounges

Computer Facilities

Shower, Change and Locker Facilities (run by Campus Life at Brisbane campuses)

Leisure Activities (run by Campus Life at Brisbane campuses)

Student Development Courses

Concerts

International Student Services and Advice

Student Employment Service

International Clubs

Childcare (run by Campus Life at Brisbane campuses)

Travel Service (run by Campus Life at Brisbane campuses)

Trips and Tours (run by Campus Life at Brisbane campuses)

Discount Ticketing

CENTRELINK ON CAMPUS

Officers from the Centrelink Student Services Unit have been based on campus at the Gold Coast Student Guild office for the last few years. They access a direct on-site linkup to Centrelink database, enabling records to be adjusted, forms submitted and general queries answered. In between times the Education and Student Support staff can organise a phone link-up on special direct numbers to Centrelink who will answer queries and give advice. Documents can be faxed to Centrelink from the Student Guild free of charge.



2004 O-Week Concert at Griffith University
Nathan campus

Function Spaces (run by Campus Life at Brisbane campuses)
Welfare Services
Representation on University Bodies
Social Activities
Photocopy Service
Campus Sports (run by Campus Life at Brisbane campuses)
Gymnasiums (run by Campus Life at Brisbane campuses)
Cinemas and Theatres (run by Campus Life at Brisbane campuses)
Facility Upkeep and Maintenance
Recreational Libraries
Interest Clubs and Societies (run by Campus Life at Brisbane campuses)
Information and Enquiry Service
Bookshops and Retail Outlets (run by Campus Life at Brisbane campuses)
University Diary
Campus Media/Student Newspapers
Legal Services
Sporting Clubs and Societies (run by Campus Life at Brisbane campuses)
Bars and Bistros (run by Campus Life at Brisbane campuses)
Conference and Meeting Rooms (run by Campus Life at Brisbane campuses)
Academic Dress (run by Campus Life at Brisbane campuses)
University Games (run by Campus Life at Brisbane campuses)
Academic Advice and Advocacy

James Cook University

Organisations: James Cook University Students' Association (Townsville and Cairns) (NUS, CAPA, AUS and NLC member)

Fee Levels: \$275 full time annual, \$137 part-time annual, \$77 remote residence and Holmes College, Mackay and Mt Isa students

Membership Opt-Out Provisions: is requirement of enrolment, can opt out by applying to Students' Association

Services Provided (36 of the AVCC's 45 service categories)

Student Accommodation
Catering and Food Service
Student Theatre
Sporting Facilities
Student Lounges
Shower, Change and Locker Facilities
Leisure Activities
Concerts
International Student Services and Advice
Student Employment Service
Childcare
Discount Ticketing
Function Spaces

Welfare Services
 Representation on University Bodies
 On Campus shops
 Social Activities
 Photocopy Service
 Campus Sports
 Gymnasiums
 Cinemas and Theatres
 Facility Upkeep and Maintenance
 Recreational Libraries
 Interest Clubs and Societies
 Information and Enquiry Service
 Bookshops and Retail Outlets
 University Diary
 Campus Media/Student Newspapers
 Legal Services
 Sporting Clubs and Societies
 Bars and Bistros
 Conference and Meeting Rooms
 Academic Dress
 University games
 Academic Advice and Advocacy
 Other



La Trobe SRC runs a very cheap book-binding service for students

La Trobe University

Organisations:

La Trobe Union
 Student Representative Council (NUS member)
 Bendigo Student Association (AUS member)
 Postgraduate Association (CAPA member)
 Sports and Recreation Association (AUS member)

Fee Levels: ALBURY-WODONGA full time annual \$190, 40-75% load \$95, up to 40% load \$52.50; BENDIGO full time annual \$325, 40-75% load \$200, up to 40% load \$100; BUNDOORA full time annual \$360, 40-75% load \$270, up to 40% load \$144; CITY full time annual \$195, 40-75% load \$150, up to 40% load \$95; MILDURA full time annual \$195, 40-75% load \$95, up to 40% load \$50.00; MT.BULLER full time annual \$212, 40-75% load \$106; OTHERS \$70

Membership Opt-Out Provisions: not requirement of enrolment, opt out provisions

Services Provided (25 of the AVCC's 45 service categories)

Student Accommodation
 Catering and Food Service
 Sporting Facilities
 Concerts
 International Student Services and Advice
 Student Employment Service
 International Clubs



The La Trobe SRC offers an on-line second hand bookshop. This enables students to list, browse and buy books similar to E-bay.

Childcare
Welfare Services
On Campus shops
Social Activities
Photocopy Service
Campus Sports
Gymnasiums
Cinemas and Theatres
Facility Upkeep and Maintenance
Recreational Libraries
Interest Clubs and Societies
Information and Enquiry Service
Campus Media/Student
Newspapers
Legal Services
Sporting Clubs and Societies
Bars and Bistros
Conference and Meeting Rooms
Academic Advice and Advocacy



Student Refectory at Macquarie University

Macquarie University

Organisations:

MUSC - Macquarie University Student Council (NUS and NLC member)
SAM - Students at Macquarie (former Macquarie University Union)
Sports' Association (AUS member)
MUPRA - Postgraduate Association (CAPA member)

Fee Levels:

Undergraduate Annual Full Time and Part Time: \$356 (\$174 to SAM, \$142 to Sports, \$40 to MUSC)
Postgraduate Full time and Part Time: \$360 (\$174 to SAM, \$142 to Sports, \$44 to MUPRA)

Membership Opt-Out Provisions: Is requirement of enrolment but there are opt out provisions. Students opt into SAM membership by ticking box at enrolment

Services Provided (28 of the AVCC's 45 service categories)

Binding Services
Catering and Food Service
Sporting Facilities
Student Lounges
Computer Facilities
Leisure Activities
Student Development Courses
Concerts
International Clubs
Childcare
Discount Ticketing
Function Spaces
Welfare Services

On Campus shops
Social Activities
Campus Sports
Gymnasiums
Facility Upkeep and Maintenance
Interest Clubs and Societies
Information and Enquiry Service
Bookshops and Retail Outlets
University Diary
Campus Media/Student Newspapers
Legal Services
Sporting Clubs and Societies
Bars and Bistros
Conference and Meeting Rooms
University Games

Melbourne University

Organisations :In transition. Currently the new model involves a university run company doing commercial services and an interim student-run undergraduate student representative body.

Melbourne University Sports (AUS affiliate)
University of Melbourne Postgraduate Association (CAPA affiliate)
Victorian College of the Arts Student Union

Fee Levels:(Parkville) \$392 for full time, part-time rate is \$49 per subject

Membership Opt-Out Provisions: Opt out on enrolment form

Services Provided (44 of the AVCC's 45 service categories)

Student Accommodation
Binding Services
Catering and Food Service
Student Theatre
Sporting Facilities
Student Lounges
Computer Facilities
Shower, Change and Locker Facilities
Leisure Activities
Student Development Courses
Concerts
International Student Services and Advice
Student Employment Service
International Clubs
Campus Radio or TV



2005 O-Week Student Services Carnival. Melbourne University student organisations are up and running after the problems of last year.



Monash University International Students Service Orientation BBQ for newly arrived students. International student organisations provide a wide variety of the support, social and advocacy for the 150,000 international student studying in Australia.

Childcare
Travel Service
Trips and Tours
Discount Ticketing
Function Spaces
Welfare Services
Representation on University Bodies
On Campus Shops
Dental Service
Art Galley
Social Activities
Photocopy Service
Campus Sports
Gymnasiums
Cinemas and Theatres
Facility Upkeep and Maintenance
Recreational Libraries
Interest Clubs and Societies
Information and Enquiry Service
Bookshops and Retail Outlets

University Diary
Campus Media/Student Newspapers
Legal Services
Sporting Clubs and Societies
Bars and Bistros
Conference and Meeting Rooms
Academic Dress
University Games
Academic Advice and Advocacy
Other

Monash University

Organisations:

Monash Student Association (Clayton) (NUS and NLC member)
Monash University Student Union (Caulfield and Peninsula) (NUS member)
Overseas Student Service (Caulfield and Peninsula) (NLC member)
Monash University Gippsland Student Union (NUS member)
Monash Union of Berwick Students
Monash Postgraduate Association (CAPA member)
Victorian Pharmacy Student Association (Parkville)

*note at the main Clayton campus the bulk of the student amenities fee goes to a university run service company that has minority student representation. The bulk of the remaining fraction of the fee goes to the Student Association.

Fee Levels:

Full Time Annual Fee at Main Clayton Campus: \$428.30
Rates for full-time students (adjusted for part-time students according to enrolment load)
Berwick \$93.60 per semester
Caulfield \$179.70 per semester
Clayton \$214.15 per semester
Gippsland \$187.40 per semester, off campus students \$65 per semester
Parkville \$50 per semester
Peninsula \$179.70 per semester

Membership Opt-Out Provisions: Not a requirement of enrolment, can opt out by ticking box on enrolment form

Services Provided (39 of the AVCC's 45 service categories)

Student Accommodation
Binding Services
Catering and Food Service
Sporting Facilities
Student Lounges
Computer Facilities
Shower, Change and Locker Facilities
Leisure Activities
Student Development Courses

Concerts
International Student Services and Advice
International Clubs
Childcare
Travel Service
Trips and Tours
Function Spaces
Welfare Services
Representation on University Bodies
Social Activities
Photocopy Service
Campus Sports
Gymnasiums
Cinemas and Theatres
Facility Upkeep and Maintenance
On Campus Shops
Student Radio (web-based)
Interest Clubs and Societies
Information and Enquiry Service
Bookshops and Retail Outlets
University Diary
Campus Media/Student Newspapers
Legal Services
Sporting Clubs and Societies
Bars and Bistros
Conference and Meeting Rooms
Academic Dress
University Games
Academic Advice and Advocacy
Other

Murdoch University

Organisations:

Murdoch University Guild of Students

Fee Levels:

Full Time Annual Fee at Murdoch; \$140

Full Time per semester: Murdoch \$70, Rockingham \$35

Part-Time per semester: Murdoch \$35, Rockingham \$17.50

Membership Opt-Out Provisions: Not requirement of enrolment, can opt out through completion of a form. Student Guild receives proportion of fee equivalent to students who do not opt out



Student Tavern at Murdoch

Services Provided (21 of the AVCC's 45 service categories)

Catering and Food Service
Sporting Facilities
Student Lounges
Shower, Change and Locker Facilities
Leisure Activities
Student Employment Service
International Clubs
Representation on University Bodies
On Campus shops
Social Activities
Campus Sports
Gymnasiums
Facility Upkeep and Maintenance
Interest Clubs and Societies
Information and Enquiry Service
Bookshops and Retail Outlets
Campus Media/Student Newspapers
Legal Services
Sporting Clubs and Societies
University Games
Academic Advice and Advocacy

New England

Organisations:

University of New England Students' Association (NUS, and NLC member)
University of New England Postgraduate Association (CAPA member)
University of New England Sports Association (AUS member)
University of New England Union

Fee Levels:

On-campus Student Annual Fee: \$370

University General Service Fee is \$185 per semester for on-campus students; \$80 per semester for off-campus students

Membership Opt-Out Provisions: Not requirement of enrolment, students can opt out by letter

Services Provided (42 of the AVCC's 45 service categories)

Student Accommodation
Catering and Food Service
Student Theatre
Sporting Facilities
Student Lounges
Computer Facilities
Shower, Change and Locker Facilities
Leisure Activities

Student Development Courses
Concerts
Student Employment Service
International Clubs
Campus Radio or TV
Childcare
Function Spaces
Dental Services
Welfare Services
Representation on University Bodies
On Campus shops
Social Activities
Photocopy Service
Campus Sports
Gymnasiums
Cinemas and Theatres
Facility Upkeep and Maintenance
Computer Facilities
Interest Clubs and Societies
Information and Enquiry Service
Bookshops and Retail Outlets
University Diary
Campus Media/Student Newspapers
Legal Services
Sporting Clubs and Societies
Bars and Bistros
Conference and Meeting Rooms
Academic Dress
University Games
Academic Advice and Advocacy
Binding Services
International Services and Advice
Trip and Tours
Discount Ticketing



Queensland University

Organisations:

University of Queensland Union
University of Queensland Sport

Fee Levels:

Full Time Annual Student Service Charge: \$272

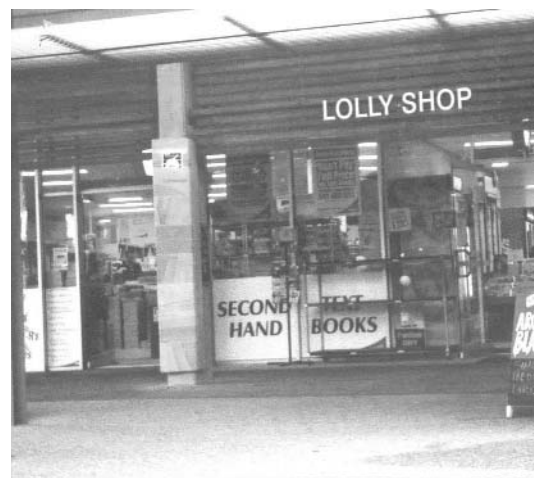
Full time per semester: \$136

Part-time per semester: \$68

External: \$21

Summer semester full time \$44

Summer semester par time \$22



Membership Opt-Out Provisions: Not a requirement of enrolment, must inform Student Associations

Services Provided (38 of the AVCC's 45 service categories)

Student Accommodation

Binding Services

Catering and Food Service

Student Theatre

Sporting Facilities

Student Lounges

Shower, Change and Locker Facilities

Leisure Activities

Student Development Courses

Concerts

International Student Services and Advice

Student Employment Service

International Clubs

Childcare

Travel Service

Trips and Tours

Discount Ticketing

Function Spaces

Dental Services

Welfare Services

Representation on University Bodies

On Campus shops

Social Activities

Photocopy Service

Campus Sports

Gymnasiums

Cinemas and Theatres

Facility Upkeep and Maintenance

Interest Clubs and Societies

Information and Enquiry Service

Bookshops and Retail Outlets

University Diary

Campus Media/Student Newspapers

Legal Services

Sporting Clubs and Societies

Bars and Bistros

Conference and Meeting Rooms

Academic Advice and Advocacy



Opening Ceremony and water polo match from Northern University Games held in Toowoomba. QUT were the 2004 champions. Every year the Northern University Games (NUG) are held during the June/July holidays. The Games includes sports such as: AFL, baseball, basketball, golf, hockey, netball, rugby union, soccer, squash, tennis, touch, volleyball and water polo. In 2005 the games will be held in Cairns. A similar event is held in Southern Australia leading to the Australia-wide university championships to be held on the Brisbane campuses this year.

Queensland University of Technology

Organisations:

QUT Student Guild (NUS, CAPA, NLC and AUS member) at Kelvin Grove, Gardens Pt and Carseldine campuses

Annual Fee Levels:

Full Time: \$242

Part Time: \$141

External: \$48.40

Membership Opt-Out Provisions: Is a requirement of enrolment but there is membership opt out provision by advising the Director, Student Business Services

Services Provided (42 of the AVCC's 45 service categories)

Student Accommodation

Binding Services

Catering and Food Service

Sporting Facilities

Student Lounges

Computer Facilities

Shower, Change and Locker Facilities

Leisure Activities

Student Development Courses

Concerts

International Student Services and Advice

Student Employment Service

International Clubs

Childcare

Travel Service

Trips and Tours

Discount Ticketing

Function Spaces

Dental Services

Welfare Services

Representation on University Bodies

On Campus shops

Social Activities

Photocopy Service

Campus Sports

Gymnasiums

Cinemas and Theatres

Facility Upkeep and Maintenance

Recreational Libraries

Interest Clubs and Societies

Information and Enquiry Service

Bookshops and Retail Outlets

University Diary

Campus Media/Student Newspapers

Legal Services

Sporting Clubs and Societies

Bars and Bistros

Conference and Meeting Rooms

Academic Dress

YOUR WORK, YOUR RIGHTS

Students are more and more reliant on casual work to supplement their meagre incomes. Many students are taken advantage of by unscrupulous cash-in-hand operations. The RMIT Student Union runs a comprehensive student work rights website which informs students about their rights as workers, how to find out about their awards, what to look out for, how to get help and for international students on their obligations under DIMIA's student visa conditions on work.

University Games
Academic Advice and Advocacy
Other

Royal Melbourne Institute of Technology

Organisations:

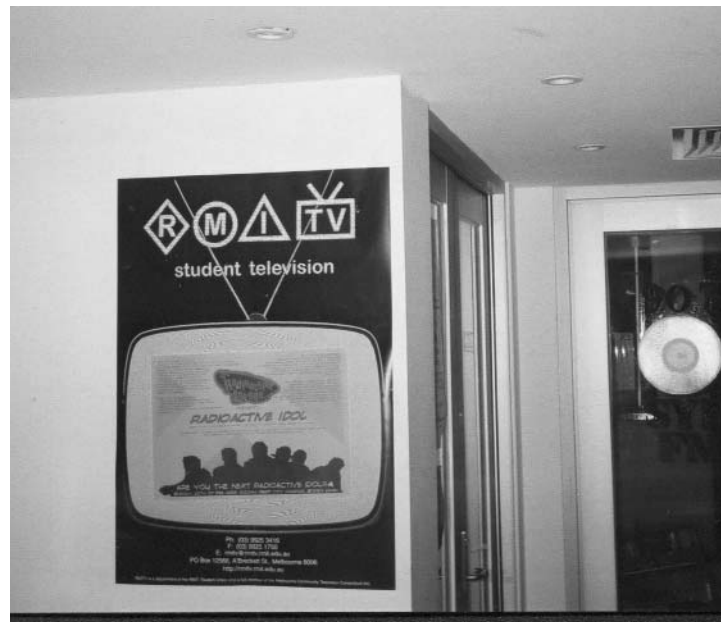
RMIT Student Union (NUS, CAPA and NLC member)
RMIT Union (AUS member)

Fee Levels:

Membership Opt-Out Provisions: Not requirement of enrolment, opt out by ticking box on enrolment form

Services Provided (43 of the AVCC's 45 service categories)

Student Accommodation
Binding Services
Catering and Food Service
Student Theatre
Sporting Facilities
Student Lounges
Computer Facilities
Shower, Change and Locker Facilities
Leisure Activities
Student Development Courses
Concerts
International Student Services and Advice
International Clubs
Campus Radio or TV
Childcare
Student Employment Service
Travel Service
Trips and Tours
Discount Ticketing
Function Spaces
Welfare Services
Representation on University Bodies
On Campus Shops
Art Gallery
Social Activities
Photocopy Service
Campus Sports
Gymnasiums
Cinemas and Theatres



Facility Upkeep and Maintenance
Interest Clubs and Societies
Information and Enquiry Service
Bookshops and Retail Outlets
University Diary
Campus Media/Student Newspapers
Legal Services
Sporting Clubs and Societies
Bars and Bistros
Conference and Meeting Rooms
Academic Dress
University Games
Academic Advice and Advocacy
Other

South Australia

Organisations:

University of South Australia Students Association at City-East, City-West, Mawson Lakes, Magill and Whyalla (NUS, CAPA, NLC and AUS member)

Fee Levels: (2004) full time annual internal \$273.50, external \$95.40. Fee level varied depending on enrolment load.

Membership Opt-Out Provisions: not requirement of enrolment, opt out by letter to Director, Student and Academic Services

Services Provided (38 of the AVCC's 45 service categories)

Student Accommodation
Binding Services
Catering and Food Service
Sporting Facilities
Student Lounges
Computer Facilities
Shower, Change and Locker Facilities
Leisure Activities
Student Development Courses
Concerts
International Student Services and Advice
Student Employment Service
International Clubs
Campus Radio or TV
Childcare
Trips and Tours
Discount Ticketing
Function Spaces
Dental Services

Welfare Services
Representation on University Bodies
On Campus shops
Social Activities
Photocopy Service
Campus Sports
Gymnasiums
Cinemas and Theatres
Facility Upkeep and Maintenance
Interest Clubs and Societies
Information and Enquiry Service
Bookshops and Retail Outlets
University Diary
Campus Media/Student Newspapers
Sporting Clubs and Societies
Bars and Bistros
Conference and Meeting Rooms
University Games
Academic Advice and Advocacy

Southern Cross

Organisations:

SCU Students' Association – Coffs Harbour
SCU Students' Association – Pt. Macquarie
SCU Students' Association – Lismore (NUS member)
SCU Campus Central (formerly the University Union) (AUS member)

Fee Levels:

Lismore: Full Time Per Semester, \$174.90
Part-Time \$116.60, External \$52.80
Coff's Harbour: Full Time, \$99 Part-Time
\$79.20, External \$52.80
Pt. Macquarie: Full Time, \$85.80 Part-Time \$66,
External \$52.80
Tweed Gold Coast: \$52.80

Membership Opt-Out Provisions: Is requirement of enrolment but can opt out by letter to Director, Student Services

Services Provided (38 of the AVCC's 45 service categories)

Student Accommodation
Binding Services
Catering and Food Service
Sporting Facilities
Student Lounges



O-Week Ball put on by the Southern Cross Uni Students' Association

Shower, Change and Locker Facilities
 Leisure Activities
 Student Development Courses
 Concerts
 International Student Services and Advice
 Student Employment Service
 International Clubs
 Childcare
 Travel Service
 Trips and Tours
 Discount Ticketing
 Function Spaces
 Dental Services
 Welfare Services
 Representation on University Bodies
 On Campus shops
 Social Activities
 Photocopy Service
 Campus Sports
 Gymnasiums
 Facility Upkeep and Maintenance
 Interest Clubs and Societies
 Art Galleries
 Information and Enquiry Service
 Bookshops and Retail Outlets
 University Diary
 Campus Media/Student Newspapers
 Sporting Clubs and Societies
 Bars and Bistros
 Conference and Meeting Rooms
 Academic Dress
 University Games
 Academic Advice and Advocacy



Graduation at Southern Cross University. At most universities the student organisations provide for the hire of academic dress for graduation.

Southern Queensland

Organisations:

University of Southern Queensland Student Guild

Fee Levels:

Full time internal annual fee: \$340.40

Students resident in 4350 (Toowoomba) postcode \$45.10 per unit

All other domestic students \$26.40 per unit

Membership Opt-Out Provisions: Is requirement of enrolment but can opt out through letter to Registrar

Services Provided (31 of the AVCC's 45 service categories)

Student Accommodation

Binding Services
 Catering and Food Service
 Sporting Facilities
 Shower, Change and Locker Facilities
 Leisure Activities
 Student Development Courses
 Concerts
 International Student Services and Advice
 Travel Service
 Trips and Tours
 Discount Ticketing
 Representation on University Bodies
 On Campus shops
 Social Activities
 Photocopy Service
 Campus Sports
 Gymnasiums
 Cinemas and Theatres
 Facility Upkeep and Maintenance
 Recreational Libraries
 Interest Clubs and Societies
 Information and Enquiry Service
 Bookshops and Retail Outlets
 University Diary
 Campus Media/Student Newspapers
 Legal Services
 Sporting Clubs and Societies
 Bars and Bistros
 University Games
 Academic Advice and Advocacy



Sunshine Coast

Organisations:

University of Sunshine Coast Student Guild

Fee Levels:

Full time annual General Service Fee: \$210



O-Week fun on the Sunshine Coast

General Service Fee: Full time \$105 per semester, part-time \$52.50 per semester, on-line postgraduate coursework students are not charged a fee

*note the General Service Fee includes a university access levy and a university administration component as well as a Guild charge

Membership Opt-Out Provisions: Not a requirement of enrolment, can opt out by applying to Deputy Vice-Chancellor

Services Provided (20 of the AVCC's 45 service categories)

Accommodation

Catering and Food Service
 Employment Service
 Sporting Facilities
 Student Lounges
 Leisure Activities
 Welfare Services
 Representation on University Bodies
 On Campus shops
 Social Activities
 Campus Sports
 Cinemas and Theatres
 Interest Clubs and Societies
 Information and Enquiry Service
 Bookshops and Retail Outlets
 University Diary
 University Games
 Legal Service
 Academic Advice and Advocacy
 Other



Student Union caf at Swinburne

Swinburne University

Organisations:

Swinburne Student Union (NUS, CAPA and NLC member)

Swinergy (Sports and Recreation) (AUS)

Operating at Croydon, Hawthorn,
Healesville, Lilydale, Prahan and Wantirna

Fee Levels:

General Service Fee: \$304 for full time students but half price discount for health care card concession holders



Swinburne Multi-Cultural Week

Membership Opt-Out Provisions: Not requirement of enrolment

Services Provided (33 of the AVCC's 45 service categories):

Catering and Food Service
 Sporting Facilities
 Student Lounges
 Computer Facilities
 Shower, Change and Locker Facilities
 Leisure Activities
 Student Development Courses
 Concerts
 International Student Services and Advice
 International Clubs
 Campus Radio or TV
 Discount Ticketing

Function Spaces
Welfare Services
Representation on University Bodies
On Campus Shops
Social Activities
Photocopy Service
Campus Sports
Gymnasiums
Facility Upkeep and Maintenance
Interest Clubs and Societies
Information and Enquiry Service
Bookshops and Retail Outlets
University Diary
Campus Media/Student Newspapers
Sporting Clubs and Societies
Bars and Bistros
Conference and Meeting Rooms
Academic Dress
University Games
Academic Advice and Advocacy
Other

Sydney University

Organisations:

Sydney University Postgraduate Association (CAPA member)
Student Representative Council (NUS member)
University of Sydney Union
Cumberland Student Guild
Student Association of Sydney College of the Arts
Sydney University Sport (AUS member)
Orange Student Association
Conservatorium of Music Student Association

Fee Levels:

Undergraduate: Full Time \$481, Part-Time \$373 (undergrads do not pay for postgrad association)
Postgraduate: Full Time \$351, \$243 (postgrads do not pay for SRC and sports)

*note only \$66 goes to SRC and \$80 to SUPRA
** there are different rates at smaller campus sites

Membership Opt-Out Provisions: Not requirement of enrolment, there are opt out provisions

Services Provided (42 of the AVCC's 45 service cate-

UNION CREATIVE GRANTS

The Creative Grants programme provides \$20 000 worth of funding for a wide range of cultural activities annually. All Union Members who are currently students are eligible to apply for a grant. In the past, applicants have used grant money to help produce films, plays, concerts, exhibitions and magazines.

The aim of the grants is to promote excellence in the arts and cultural practice, by providing and encouraging the provision of opportunities for members to practice the arts and culture

Applications are judged on the basis of their artistic, innovative, inventive and collaborative value, with their viability and relevance to Union members also taken into account.

Applications go through a peer review evaluation as well as an arms length evaluation by arts professionals, who bring their experience and expertise to the committee.

gories)
Student Accommodation
Binding Services
Catering and Food Service
Student Theatre
Sporting Facilities
Student Lounges
Computer Facilities
Shower, Change and Locker Facilities
Leisure Activities
Student Development Courses
Concerts
International Student Services and Advice
International Clubs
Campus Radio or TV
Childcare
Trips and Tours
Discount Ticketing
Function Spaces
Welfare Services
Representation on University Bodies
On Campus Shops
Dental Service
Art Galley
Social Activities
Photocopy Service
Campus Sports
Gymnasiums
Cinemas and Theatres
Facility Upkeep and Maintenance
Recreational Libraries
Interest Clubs and Societies
Information and Enquiry Service
Bookshops and Retail Outlets
University Diary
Campus Media/Student Newspapers
Legal Services
Sporting Clubs and Societies
Bars and Bistros
Conference and Meeting Rooms
Academic Dress
University Games
Academic Advice and Advocacy
Other

Tasmania

Organisations:

Tasmania University Union (Hobart) (NUS, CAPA, NLC and AUS member)

Launceston Student Association (Launceston, Cradle Coast, Inveresk) (NUS, CAPA, NLC and AUS member)

Fee Levels: full-time \$122 per semester, for part-time, distance and 19 categories of students with substantial off-campus placements there are fee reductions

Membership Opt-Out Provisions: Is requirement of enrolment but can opt out through letter to Registrar

Services Provided (36 of the AVCC's
45 service categories)

Student Accommodation

Binding Services

Catering and Food Service

Sporting Facilities

Student Lounges

Computer Facilities

Shower, Change and Locker Facilities

Leisure Activities

Student Development Courses

Concerts

International Clubs

Travel Service

Trips and Tours

Discount Ticketing

Function Spaces

Welfare Services

Representation on University Bodies

On Campus shops

Social Activities

Photocopy Service

Campus Sports

Gymnasiums

Cinemas and Theatres

Facility Upkeep and Maintenance

Interest Clubs and Societies

Art Galleries

Information and Enquiry Service

Bookshops and Retail Outlets

Campus Media/Student Newspapers

Sporting Clubs and Societies

Bars

Conference and Meeting Rooms

Academic Dress

University Games

Academic Advice and Advocacy



University of Tasmania is now carving out a niche attracting many students from the mainland. For students who need a break or want to see the breathtaking sights of Tasmania the TUU owns a ski hut with 17 beds which is offered at a very subsidised rate to members

University of Technology Sydney

Organisations:

UTS Students Association (NUS, CAPA and NLC member)

UTS Union (AUS member)

Fee Levels:

Full Time Annual \$420

\$210 per semester (\$135 to Union, \$34 to Student Association, \$33.50 accommodation levy, \$7.50 student ID card, \$33.50 student accommodation levy)

External students do not pay fee, no extra charge for third summer semester

Membership Opt-Out Provisions: Not requirement of enrolment, opt out provisions

Services Provided (37 of the AVCC's 45 service categories)

Binding Services

Catering and Food Service

Student Theatre

Sporting Facilities

Student Lounges

Computer Facilities

Shower, Change and Locker Facilities

Leisure Activities

Student Development Courses

Concerts

International Student Services and Advice

International Clubs

Childcare

Trips and Tours

Discount Ticketing

Function Spaces

Welfare Services

Representation on University Bodies

On Campus shops

Social Activities

Photocopy Service

Campus Sports

Gymnasiums

Cinemas and Theatres

Facility Upkeep and Maintenance

Interest Clubs and Societies

Art Galleries

Information and Enquiry Service

Bookshops and Retail Outlets

University Diary

Campus Media/Student Newspapers

Community Law and Legal Research Centre

The UTS Community Law and Legal Research Centre provides a free, accessible legal advice and referral service for UTS students and staff on a variety of issues. The Centre also provides community legal education and works on law reform projects, which students can get involved in. The Centre is recognised and respected as a professional legal and community assistance service. In 1999, it was awarded the UTS Equity, Social Justice and Human Rights Award in recognition of its efforts in law reform. The Centre's legal service is funded by the UTS Union. The Centre is also funded and supported by the UTS Students' Association and the UTS Faculty of Law.

The Centre is also a place of practical legal education for UTS law students. Each week 25-30 students volunteer at the Centre. They perform a variety of tasks including interviewing clients, doing legal research, providing para-legal assistance to the solicitor, and working on socio-legal research projects.

Legal Services
Sporting Clubs and Societies
Bars and Bistros
Conference and Meeting Rooms
University Games
Academic Advice and Advocacy

Victoria University

Organisations:

Victoria University Student Union (NUS, CAPA, NLC and AUS member)

Fee Levels:

General Service Fee \$300 full time annual
adjusted according to enrolment load

Membership Opt-Out Provisions: Not requirement of enrolment

Services Provided (29 of the AVCC's 45 service categories)

Binding Services
Sporting Facilities
Student Lounges
Leisure Activities
Student Development Courses
Concerts
International Student Services and Advice
Student Employment Service
International Clubs
Campus Radio or TV
Childcare
Trips and Tours
Discount Ticketing
Dental Services
Welfare Services
Representation on University Bodies
On Campus shops
Social Activities
Photocopy Service
Campus Sports
Gymnasiums
Facility Upkeep and Maintenance
Information and Enquiry Service
University Diary



Bringing together students from around the world. Victoria University International Students' Association social event

Campus Media/Student Newspapers
Conference and Meeting Rooms
University Games
Academic Advice and Advocacy
Other

Western Australia

Organisations:

University of WA Student Guild (NUS, CAPA, NLC and AUS member)

Fee Levels:

Membership Opt-Out Provisions: Not requirement of enrolment, can opt out by filling out a form.
Student Guild receives proportion of fee equivalent to students who do not opt out

Services Provided (30 of the AVCC's 45 service categories)

Catering and Food Service
Sporting Facilities
Student Lounges
Computer Facilities
Shower, Change and Locker Facilities
Leisure Activities
International Clubs
Function Spaces
Welfare Services
Representation on University Bodies
On Campus shops
Social Activities
Photocopy Service
Campus Sports
Gymnasiums
Computer facilities
Interest Clubs and Societies
Art Galleries
Information and Enquiry Service
Bookshops and Retail Outlets
University Diary
Campus Media/Student Newspapers
Legal Services
Sporting Clubs and Societies
Bars and Bistros
Conference and Meeting Rooms
Academic Dress
University Games
Academic Advice and Advocacy
Other

Western Sydney

Organisations:

In transition due to restructure arising from university mergers

Students' Association

Postgraduate Association

* note the bulk of the 80% of the fee goes to a not for profit company called uwconnect which operates at Bankstown, Blacktown (Nirimba), Campbelltown, Hawkesbury and some services at Parramatta. There is opposition to the structure at Penrith. It has an equal number of university and elected student representatives in its board of management. As well as doing the commercial serviced it also runs sports and leisure.

Fee Levels:

Full Time Annual Fee: \$364

Full time per standard semester: \$182, part-time \$122, external \$63.50

Non-standard enrolments: \$91 full time, \$61 part-time, external \$31.75

Membership Opt-Out Provisions: Not a requirement of enrolment, opt out by applying to Student Associations

Services Provided

Being restuctured

Wollongong

Organisations:

WU Students Association NUS and NLC member)

WU Postgraduate Association (CAPA member)

* note that over 85% of the annual fee goes to University Recreation and Aquatic Centre Ltd (a university run company) and Wollongong Uni Centre Ltd (another university run company with only minority student representation)

Fee Levels:

Full Time Annual Fee: \$351.60

(Uni Centre \$199.10, University Recreation and Aquatic Centre, \$104, WU Student Association \$48.50, WU Postgraduate Association \$57)

Wollongong Campus: Undergraduate \$351.60, Postgraduate \$360; Shoalhaven Campus \$180; Access Centres \$55; External Postgraduates \$57, Bachelor of Indigenous Health \$48.40

Membership Opt-Out Provisions: Is requirement of enrolment but can opt out by applying to SAS

Services Provided (36 of the AVCC's 45 service categories)

- Binding Services
- Catering and Food Service
- Sporting Facilities
- Student Lounges
- Computer Facilities
- Shower, Change and Locker Facilities
- Leisure Activities
- Student Development Courses
- Concerts
- International Student Services and Advice
- Student Employment Service
- International Clubs
- Childcare
- Trips and Tours
- Discount Ticketing
- Function Spaces
- Dental Services
- Welfare Services
- Representation on University Bodies
- On Campus shops
- Social Activities
- Photocopy Service
- Campus Sports
- Gymnasiums
- Cinemas and Theatres
- Interest Clubs and Societies
- Information and Enquiry Service
- Bookshops and Retail Outlets
- University Diary
- Campus Media/Student Newspapers
- Sporting Clubs and Societies
- Bars and Bistros
- Academic Dress
- University Games
- Academic Advice and Advocacy



Even hard-working postgraduates have got to have some fun some times - Wollongong University Postgraduate Association puts on the postgraduate ball.