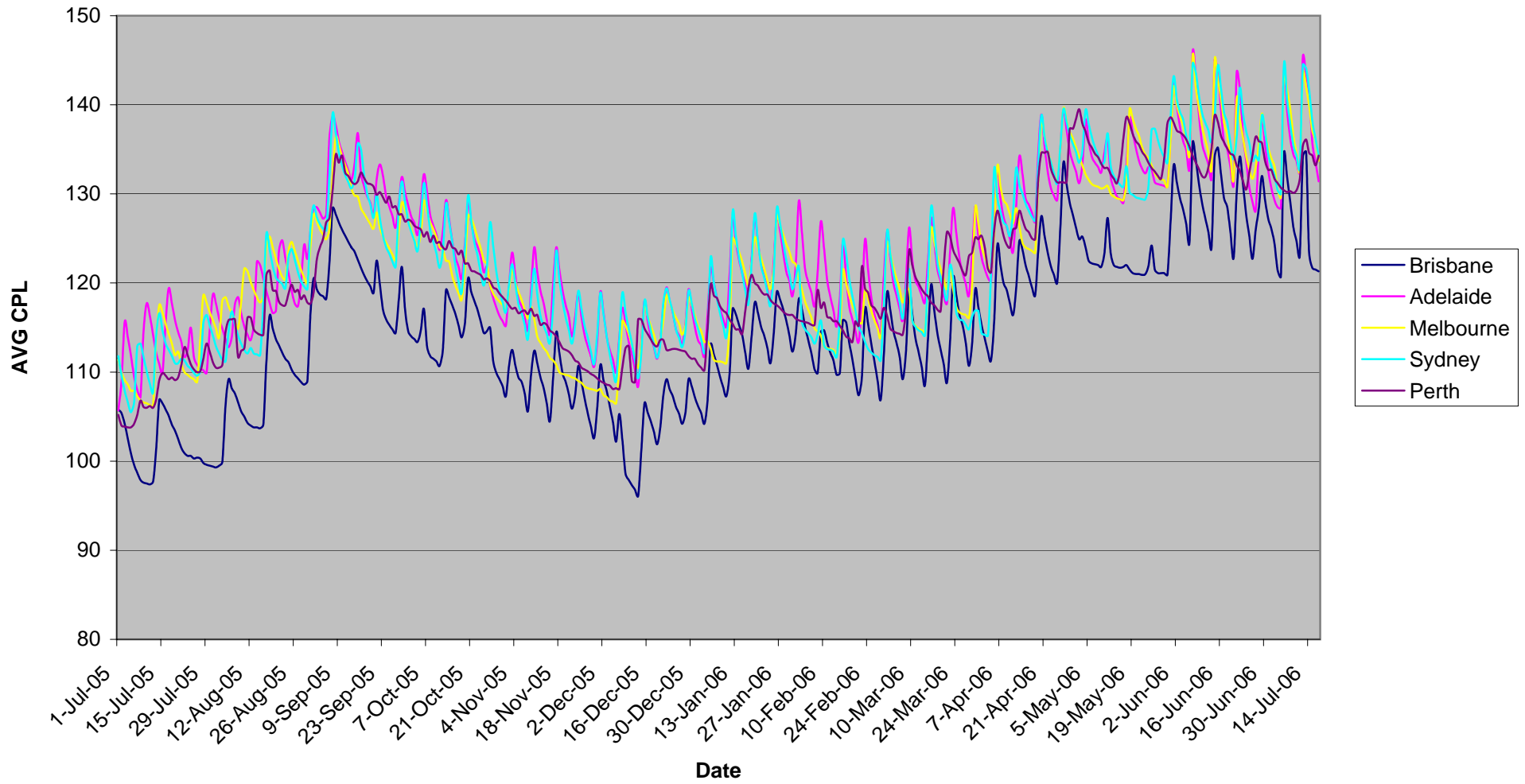
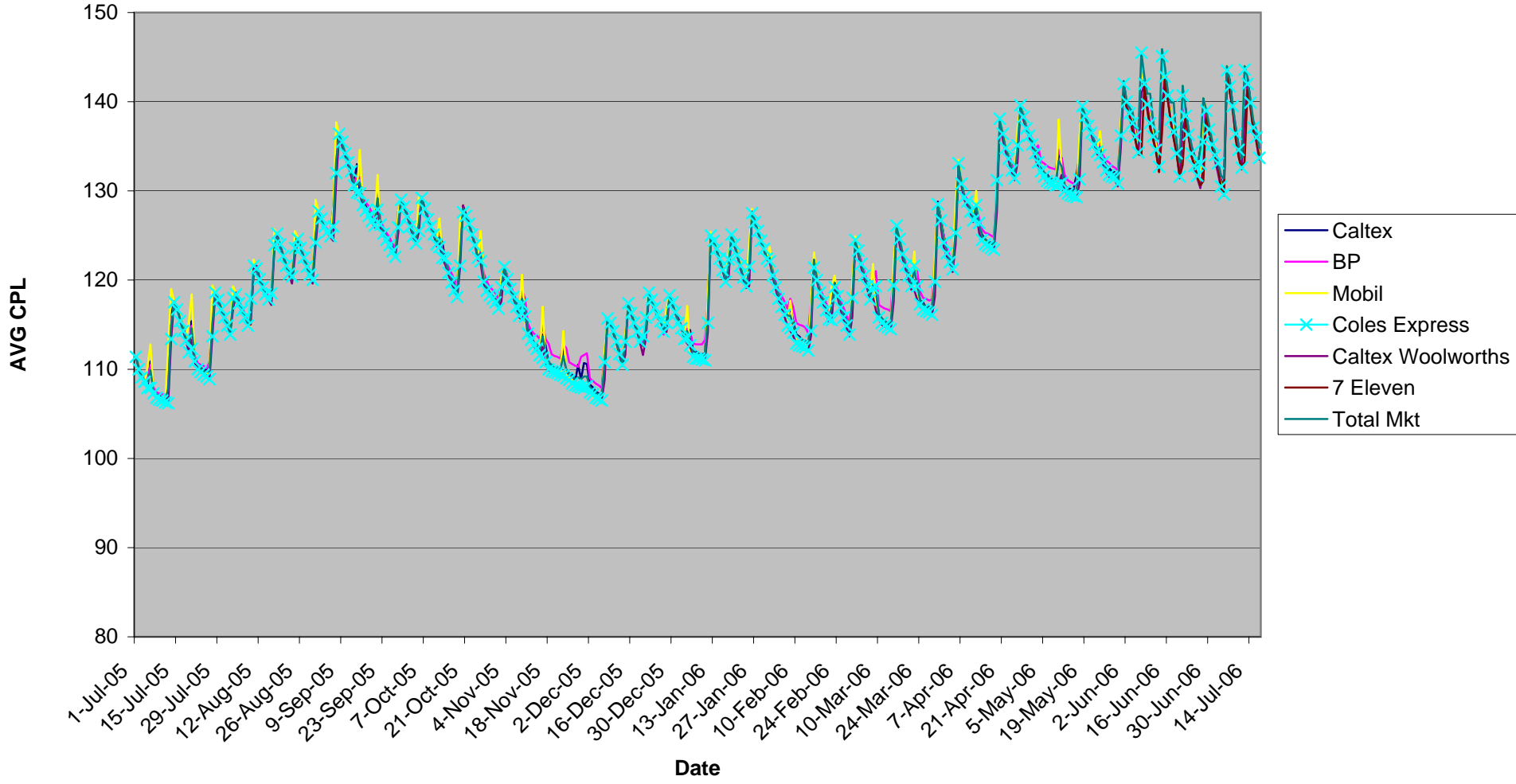


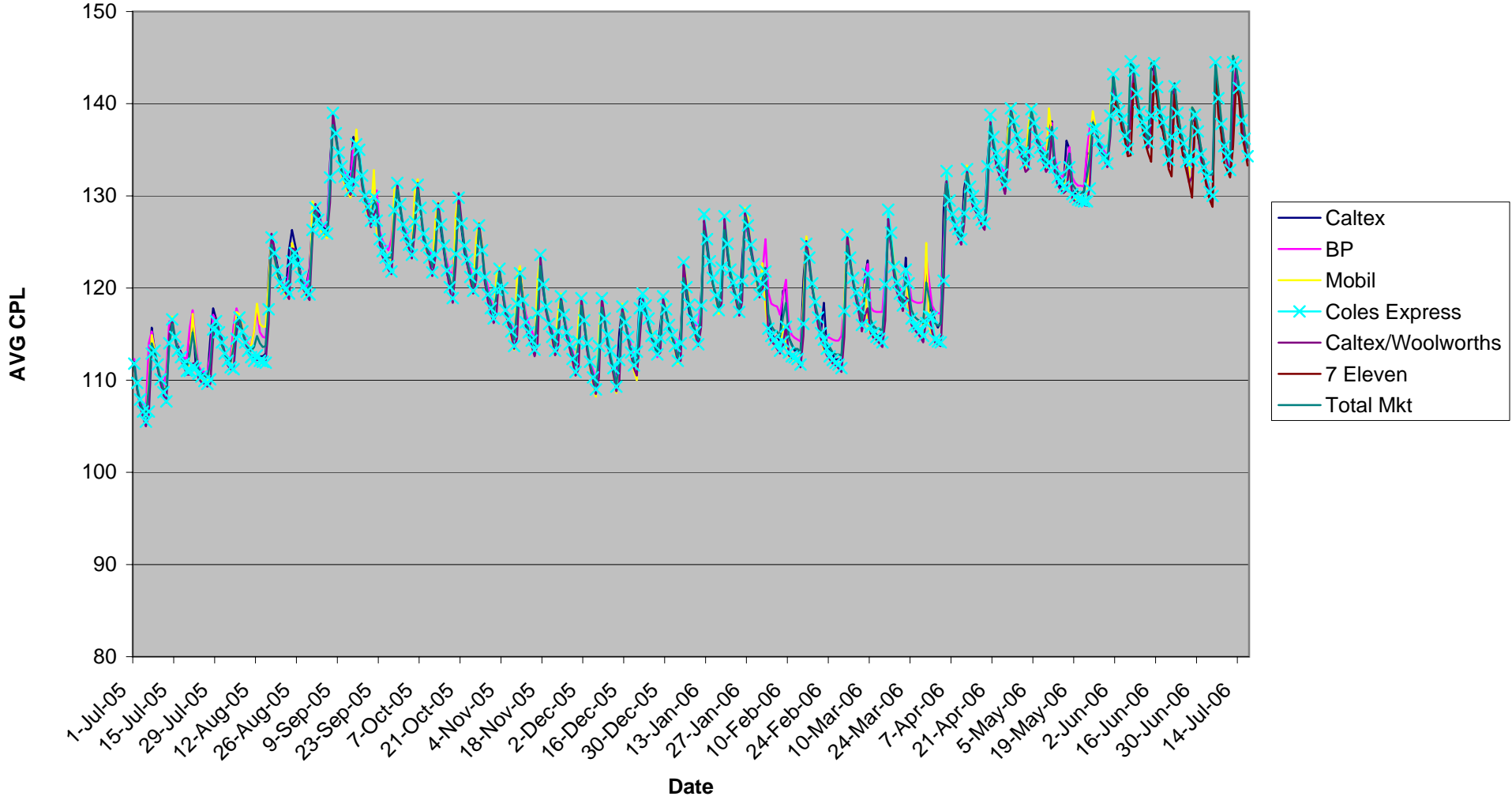
**Chart 1**  
**Average CE Retail Board Prices**



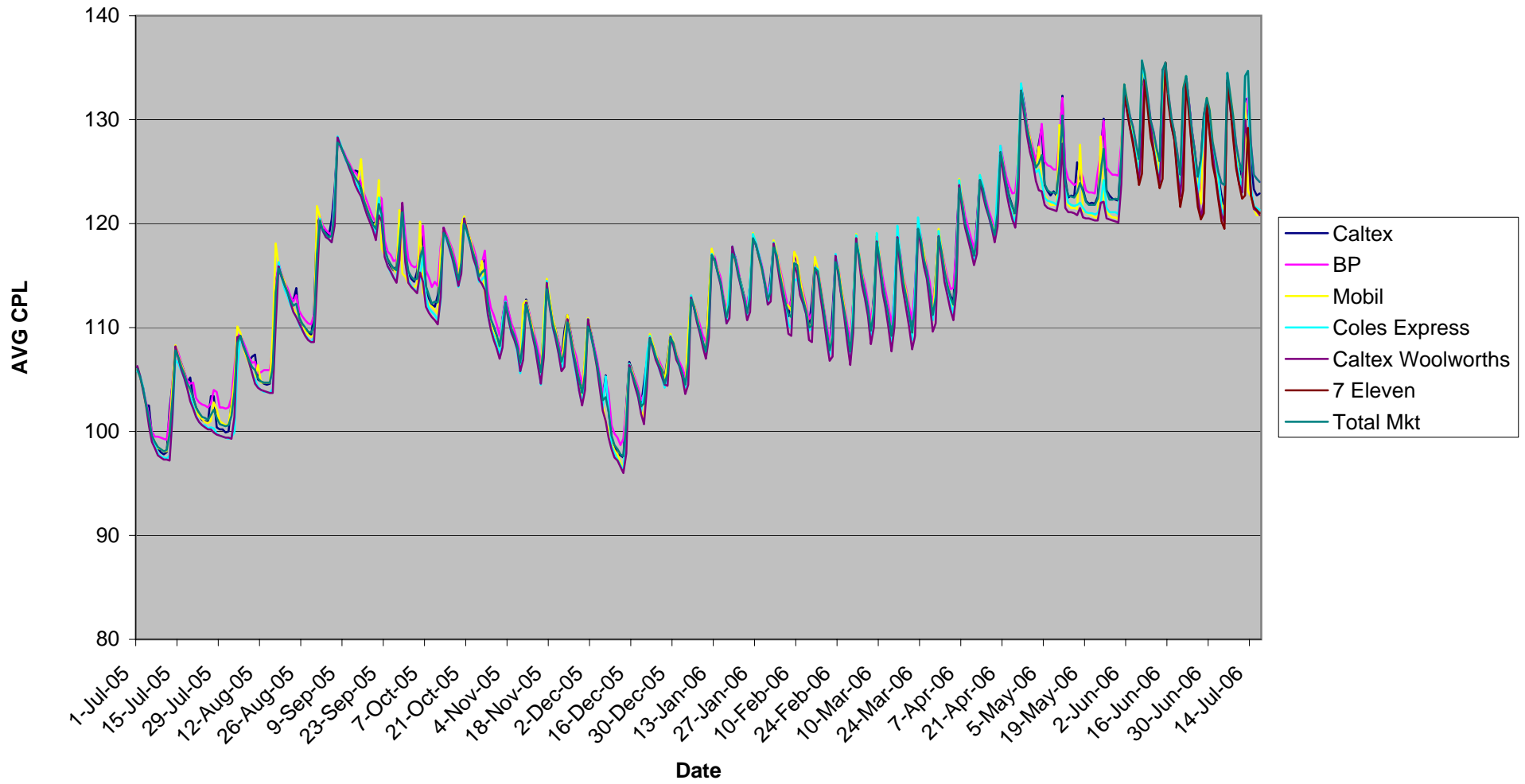
**Chart 2  
Melbourne**



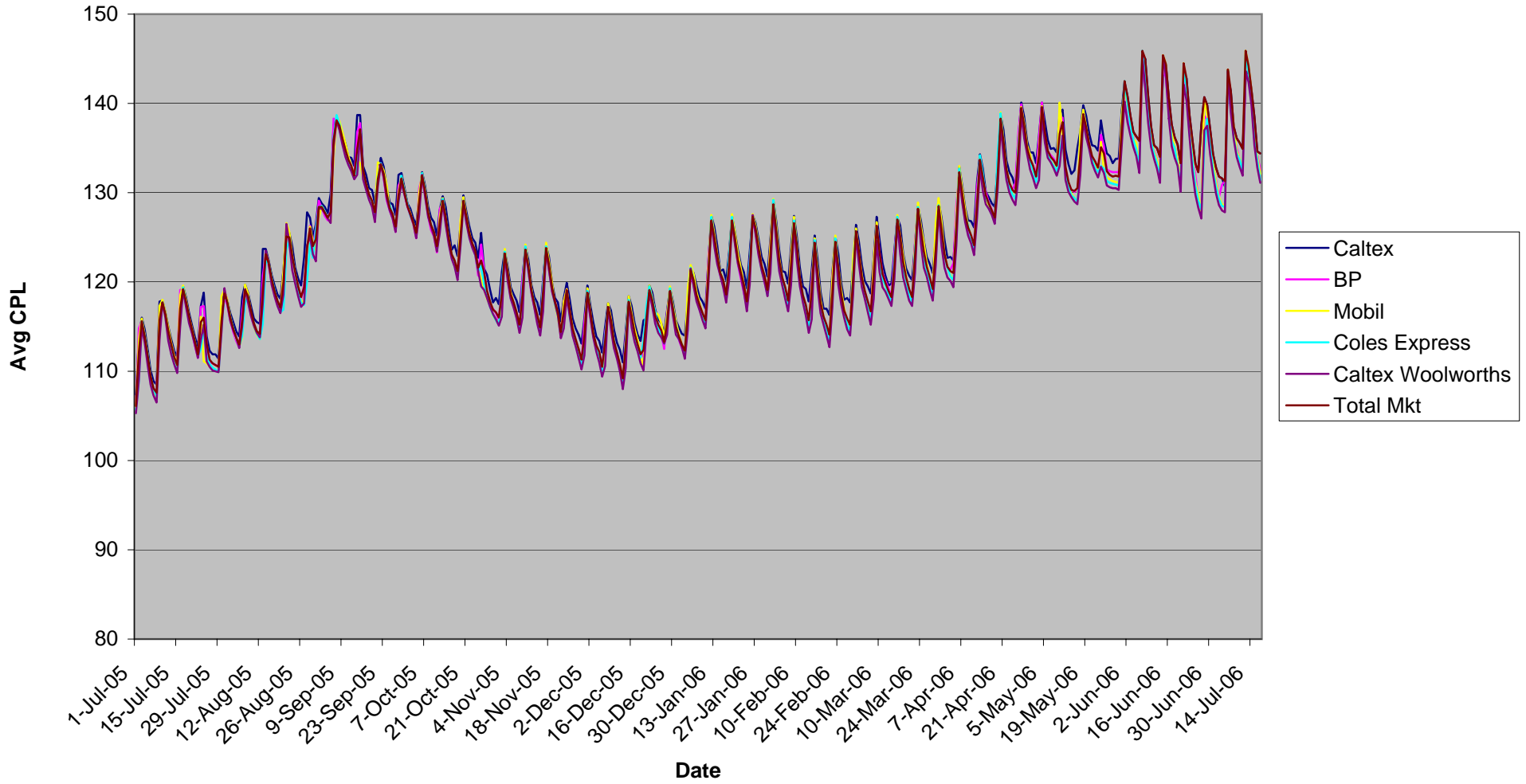
**Chart 3  
Sydney**



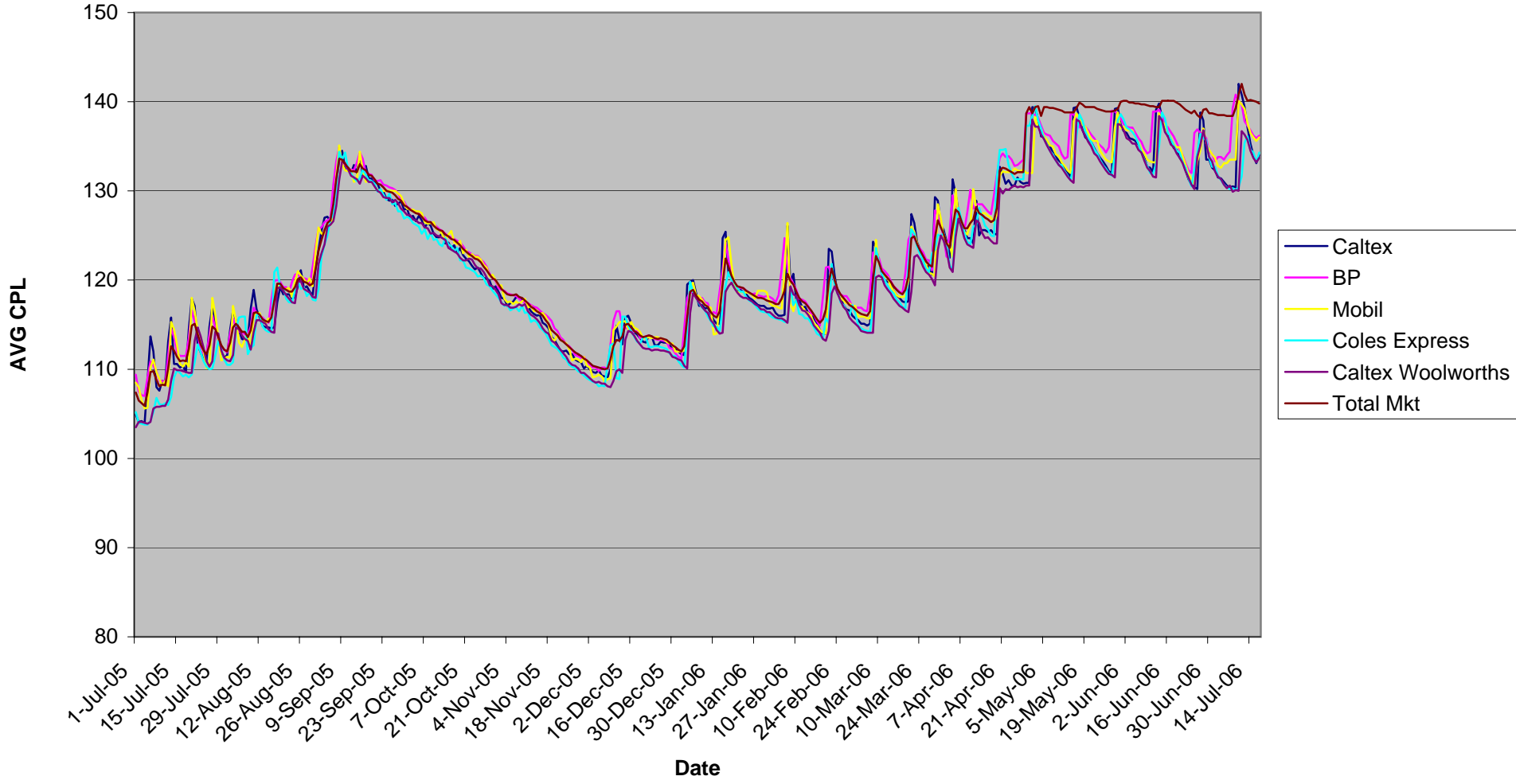
**Chart 4  
Brisbane**



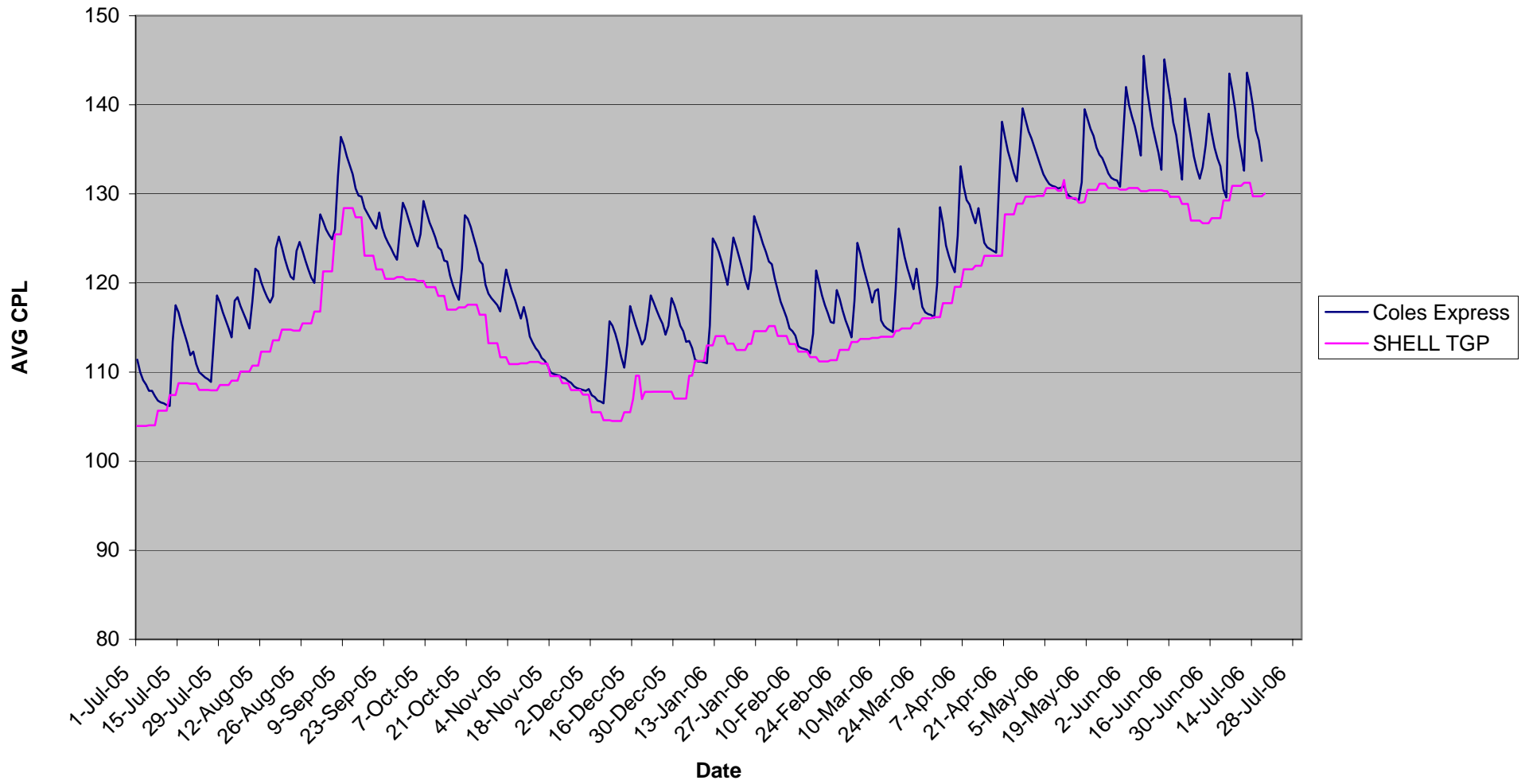
**Chart 5  
Adelaide**



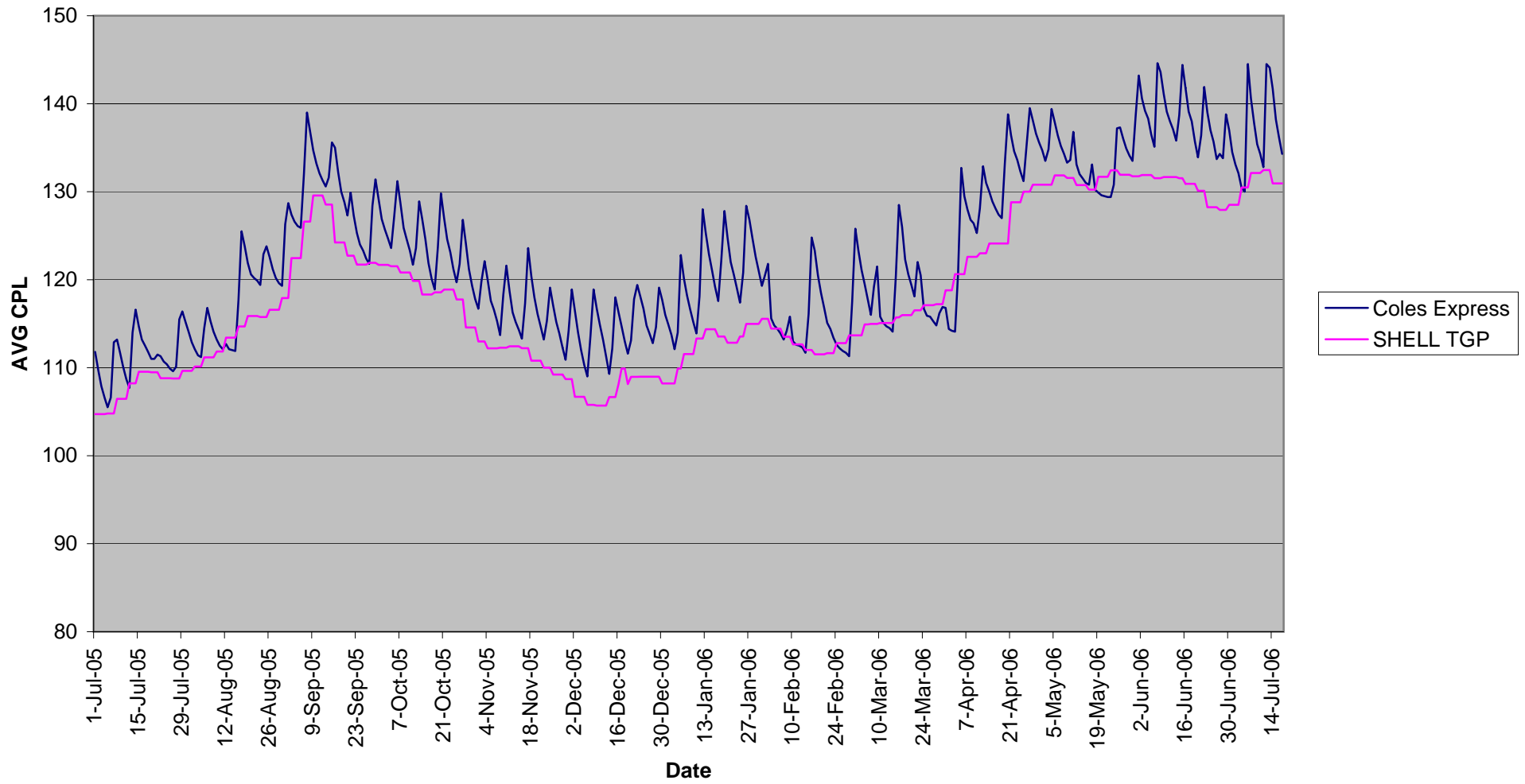
**Chart 6  
Perth**



**Chart 7  
Melbourne TGP**

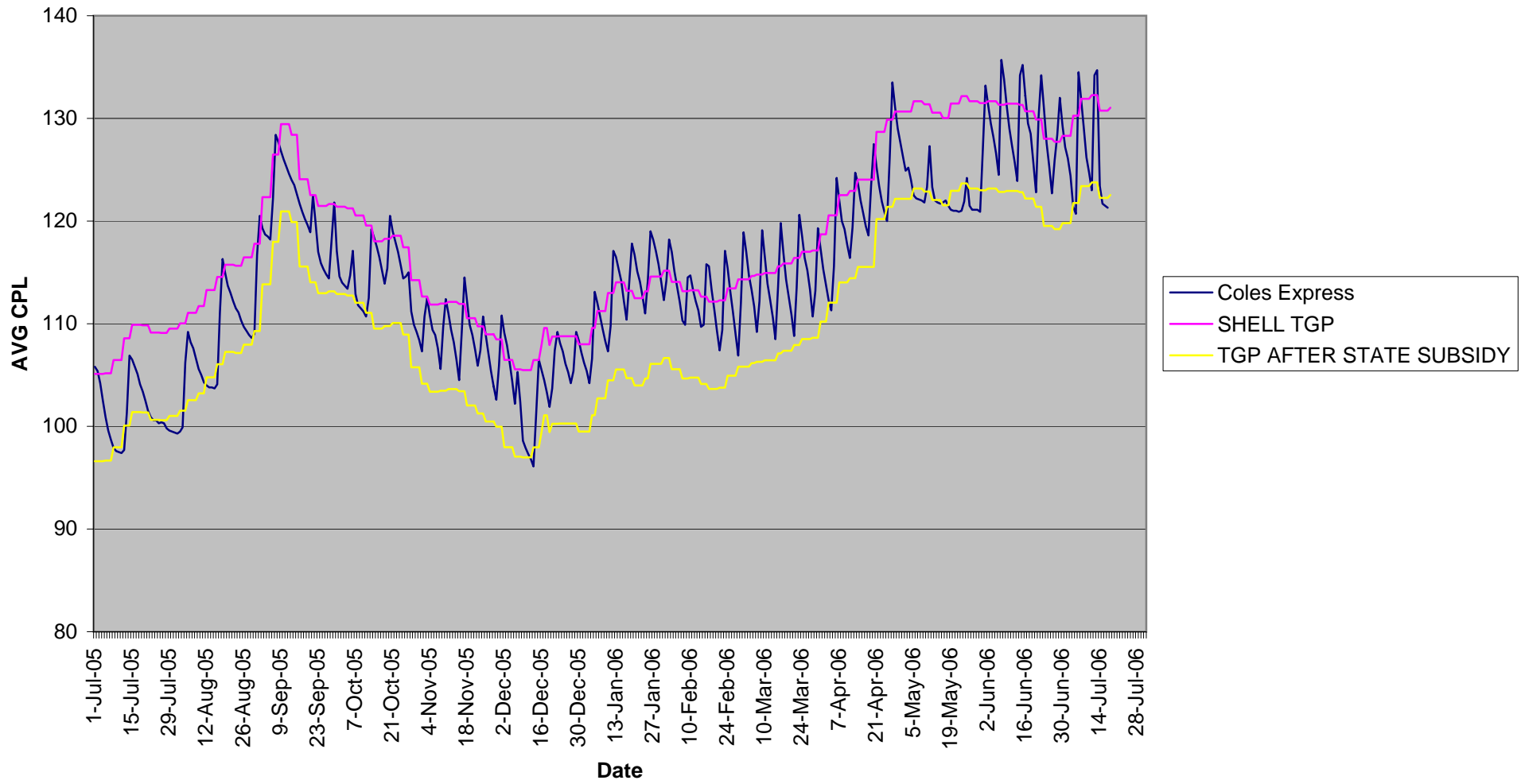


**Chart 8  
Sydney TGP**

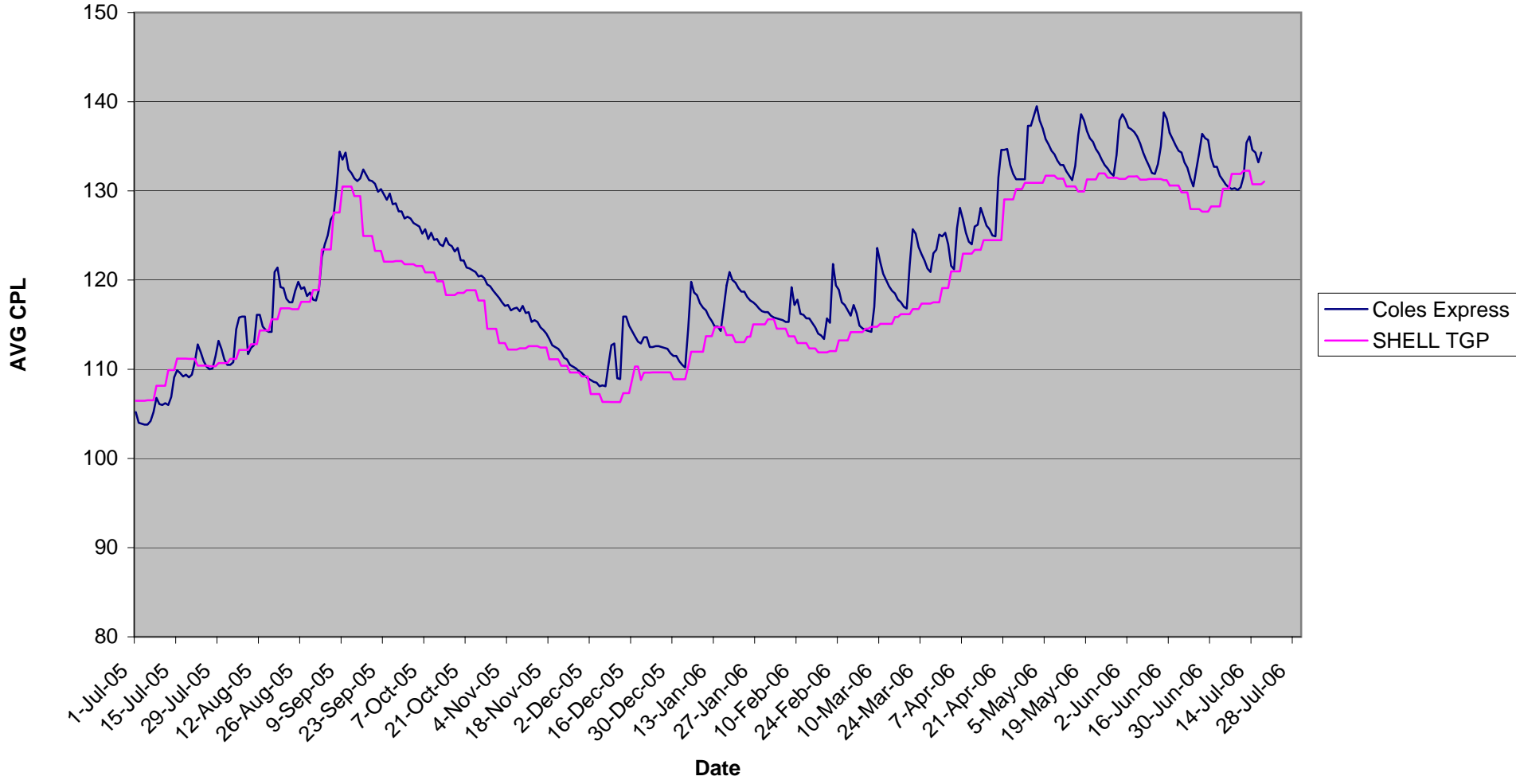




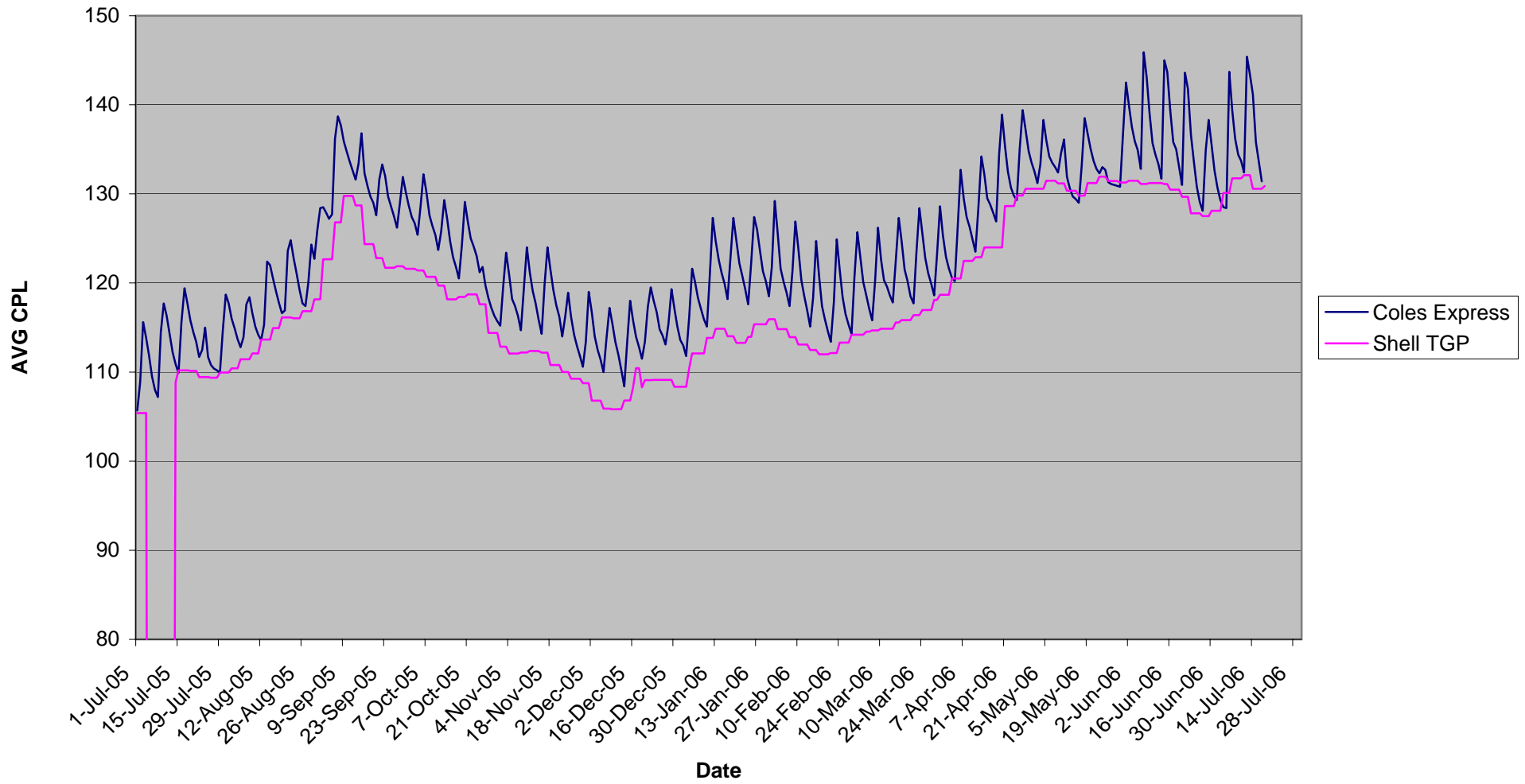
**Chart 9**  
**Brisbane TGP**



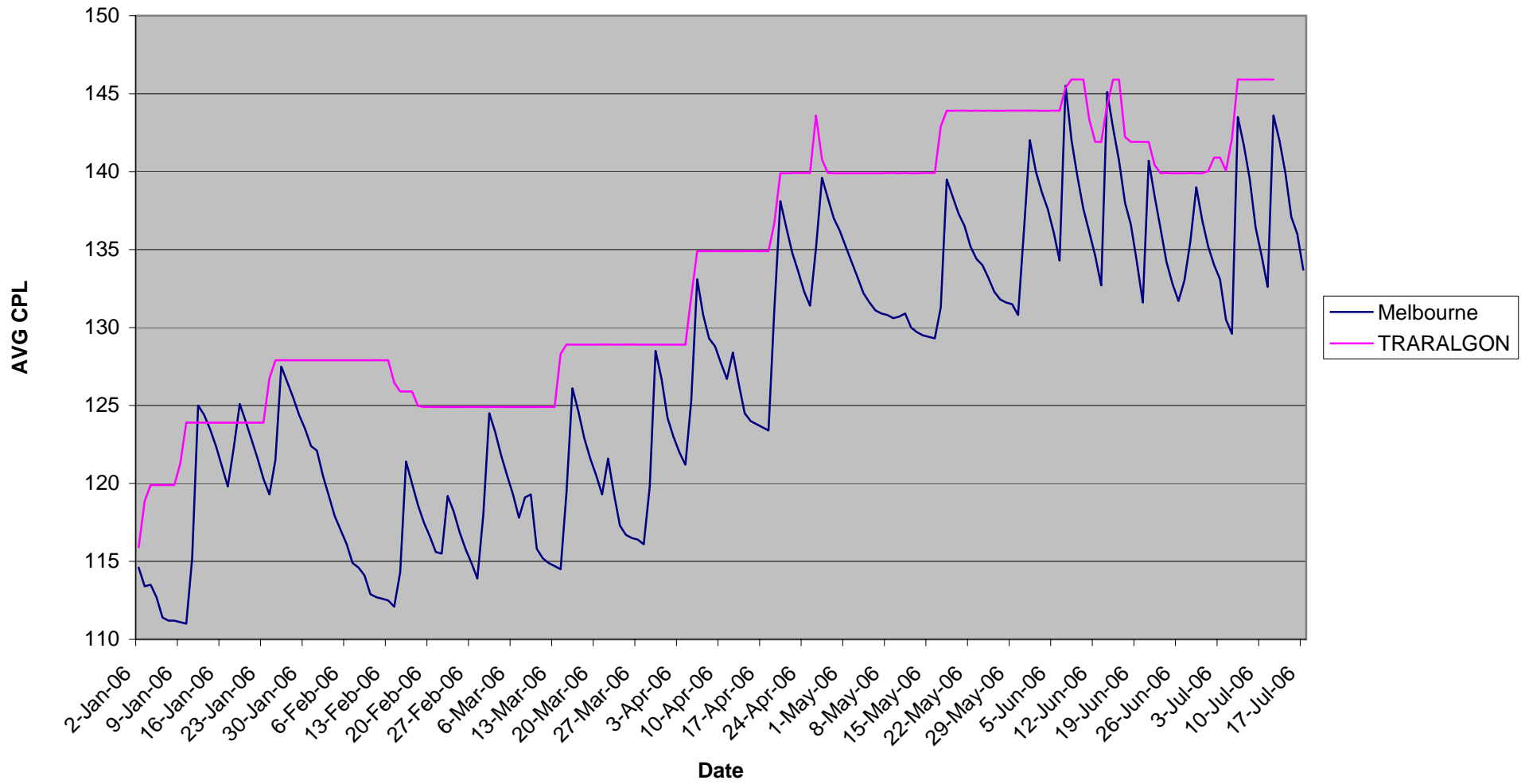
**Chart 10**  
**Perth TGP**



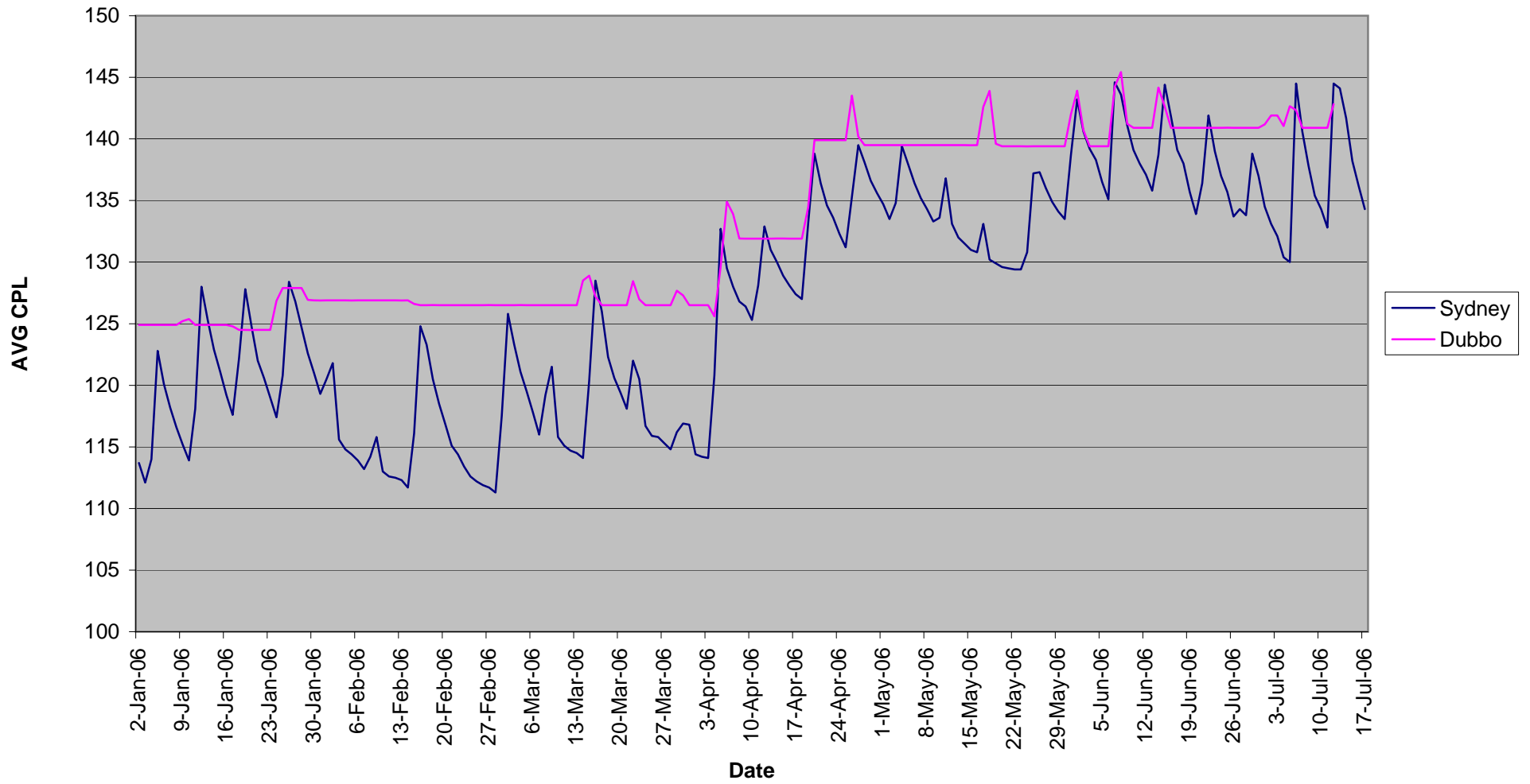
**Chart 11**  
**Adelaide TGP**



**Chart 12**  
**Melbourne Metro VS Traralgon**



**Chart 13**  
**Sydney Metro VS Dubbo**



**Chart 14**  
**Brisbane Metro VS Toowoomba**

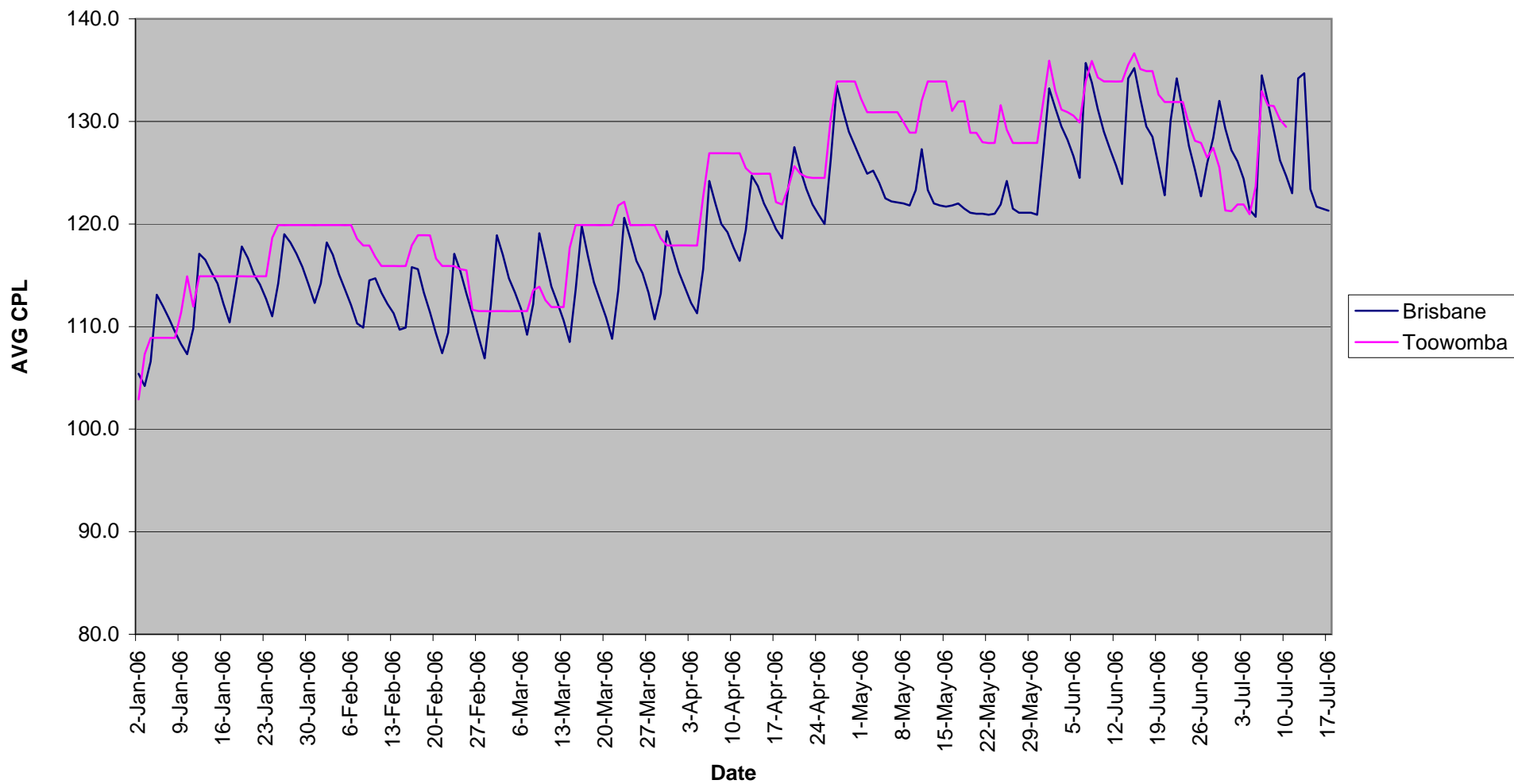
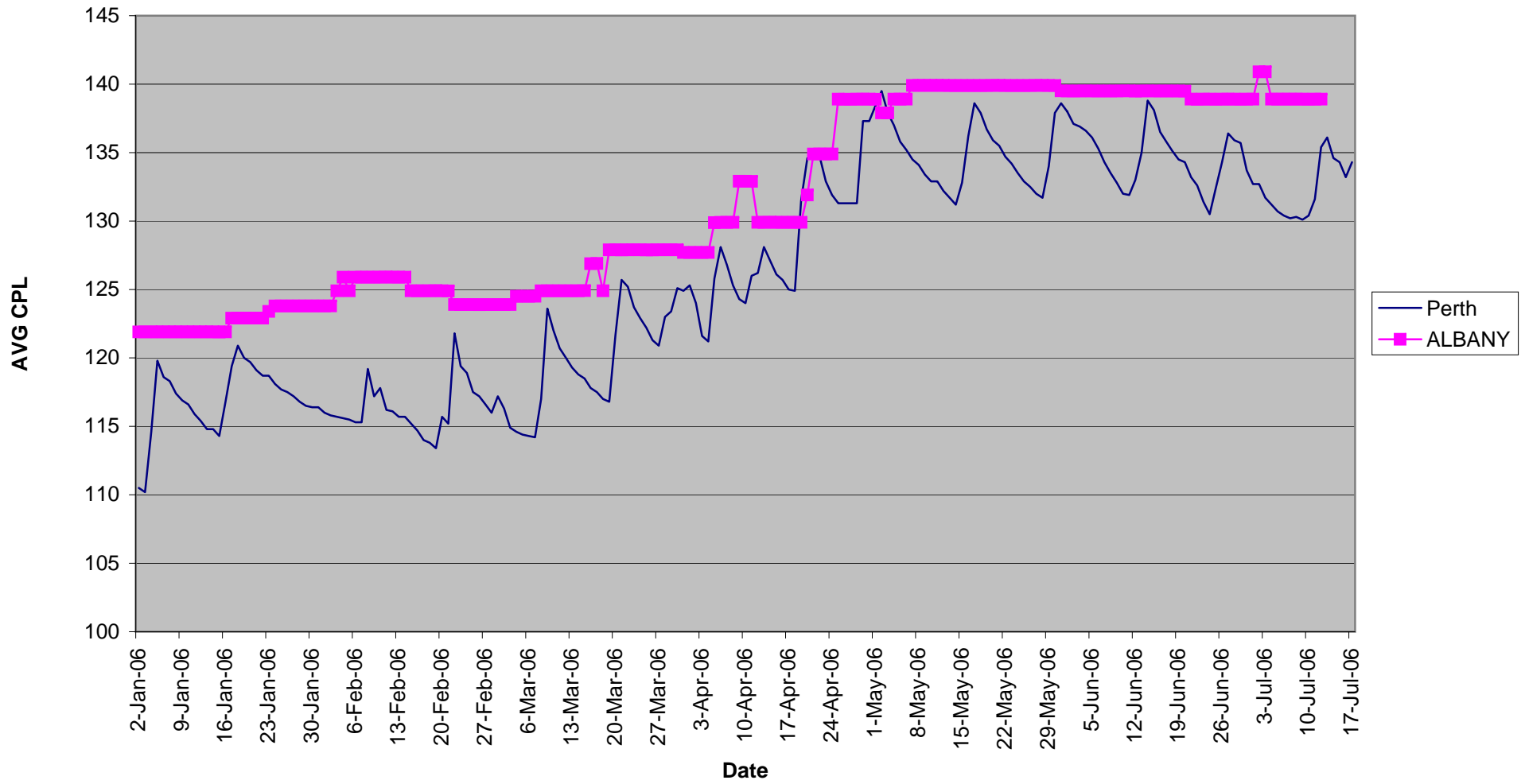


Chart 15  
Perth Metro VS Albany



**Chart 16**  
**Adelaide Metro VS Ceduna**

