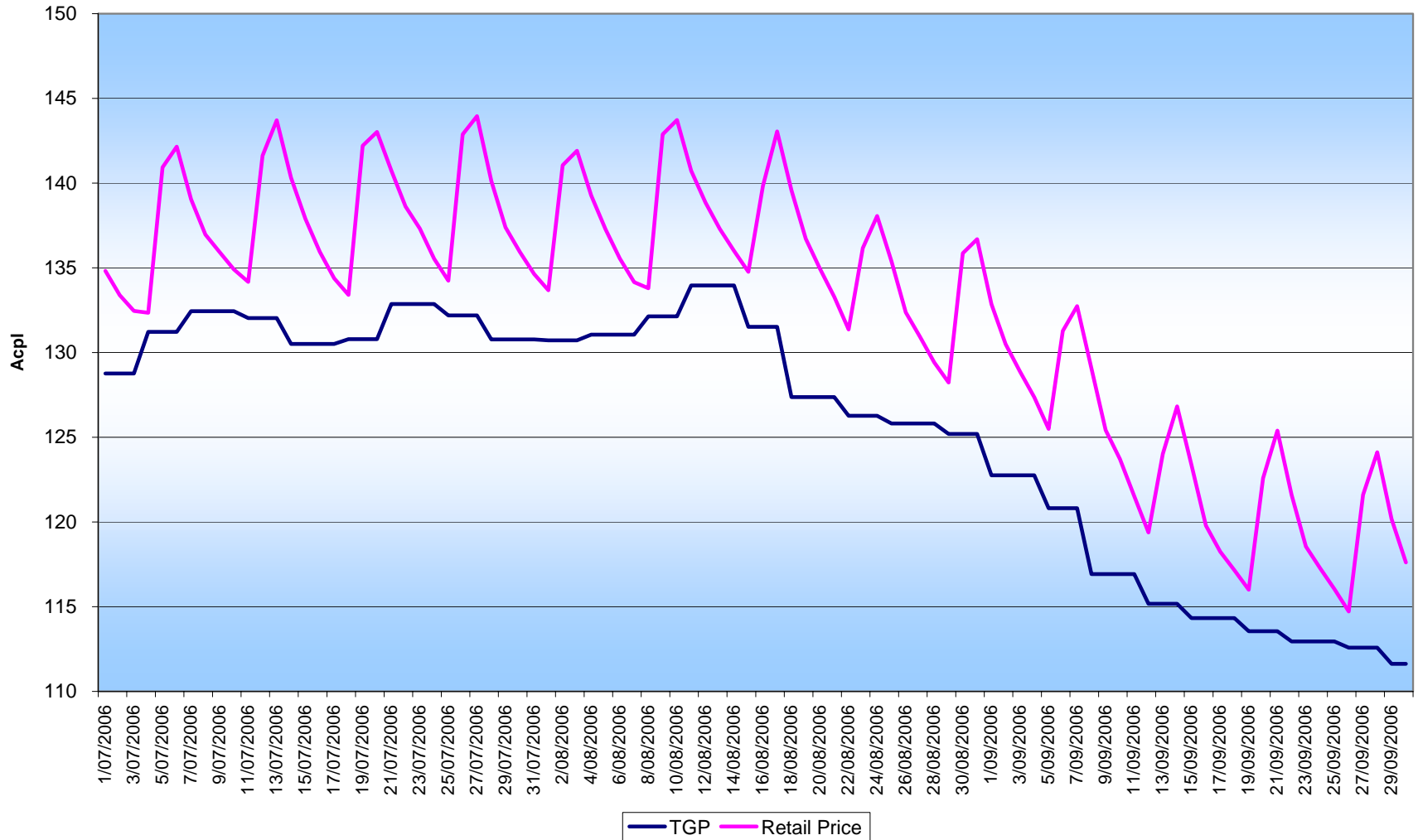
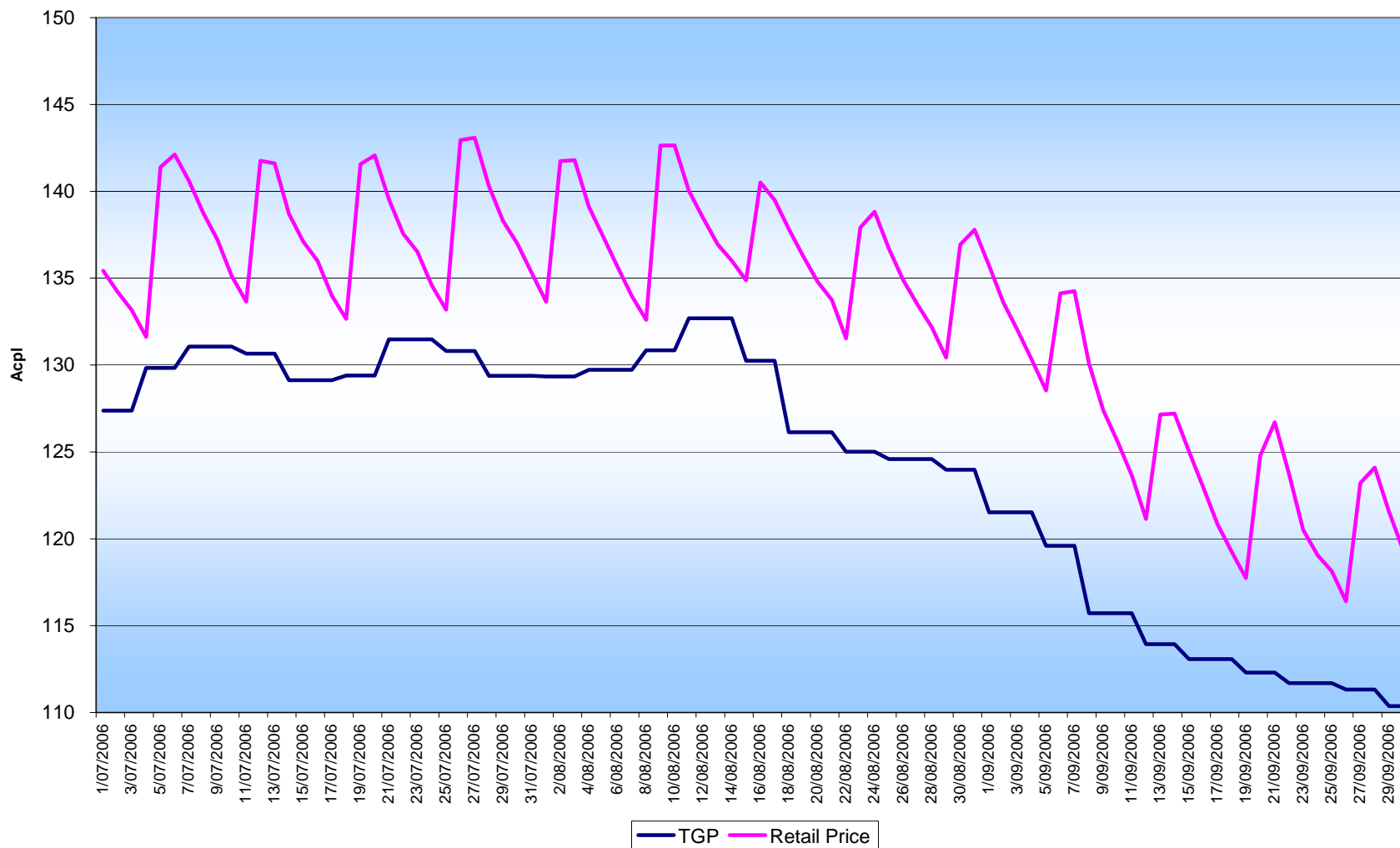


Sydney Regular Unleaded BP Terminal Gate Price vs BP Retail Price*



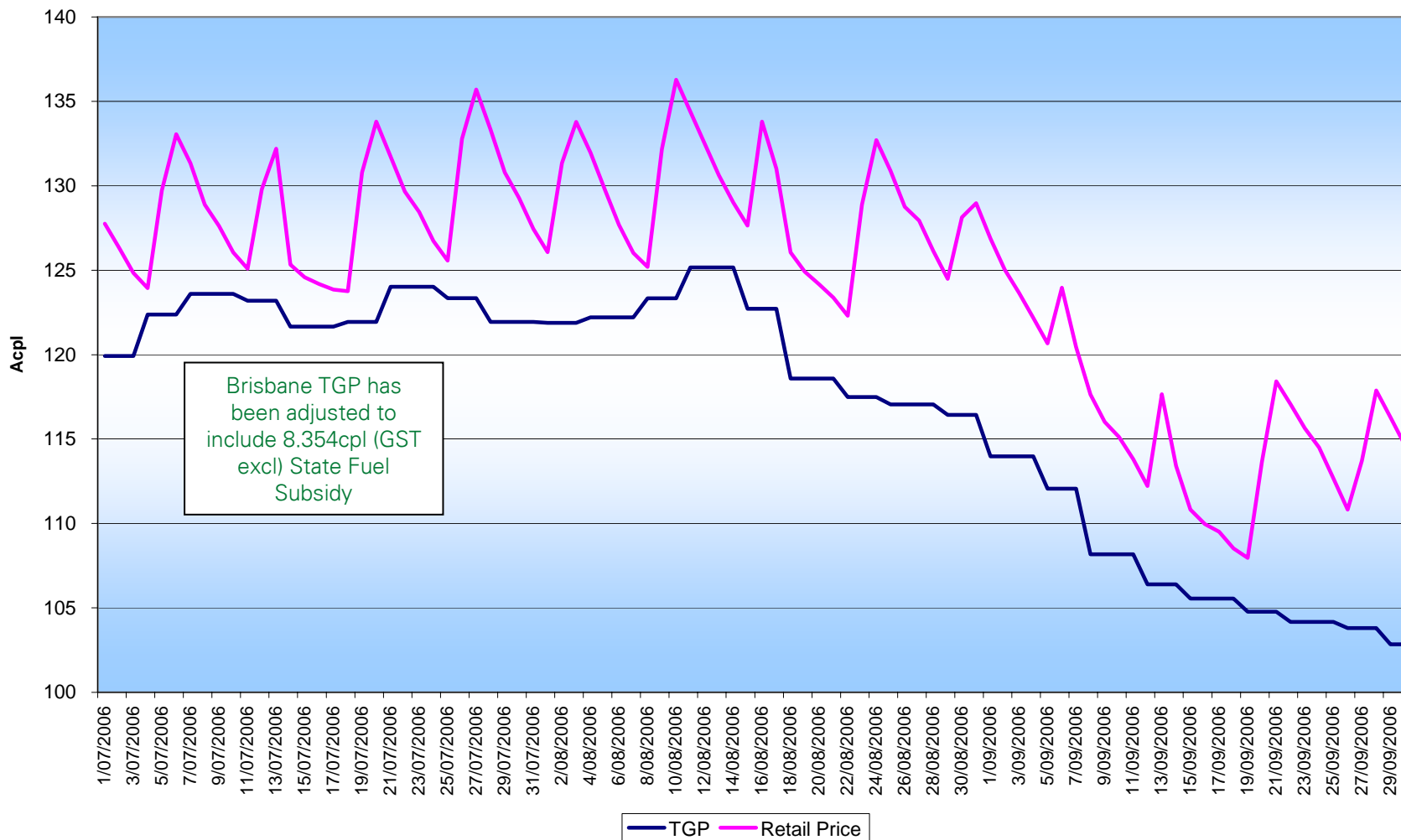
* BP Retail Price is daily average of 4pm prices at BP Branded sites

Melbourne Regular Unleaded BP Terminal Gate Price vs BP Retail Price*



* BP Retail Price is daily average of 4pm prices at BP Branded sites

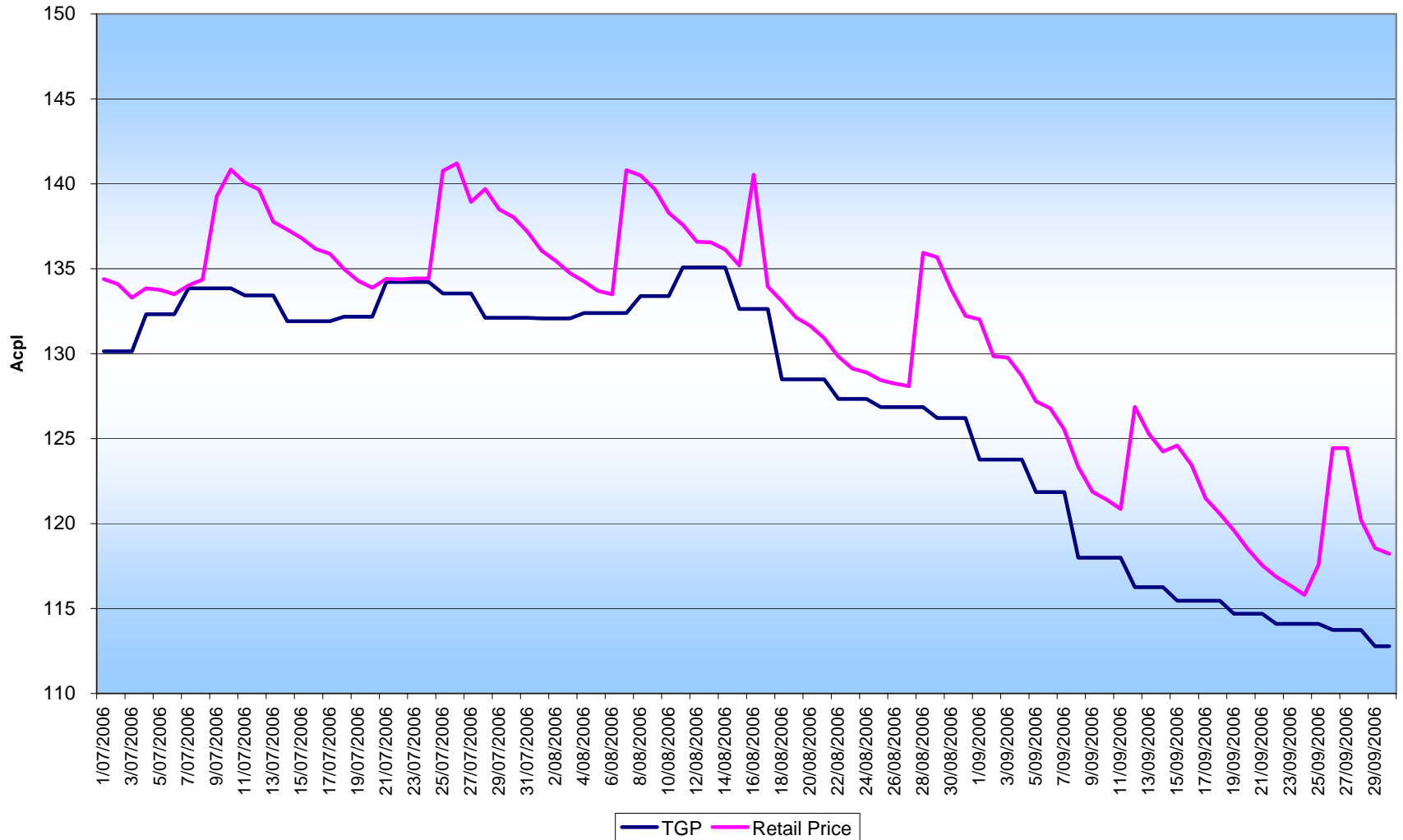
Brisbane Regular Unleaded BP Terminal Gate Price vs BP Retail Price*



* BP Retail Price is daily average of 4pm prices at BP Branded sites



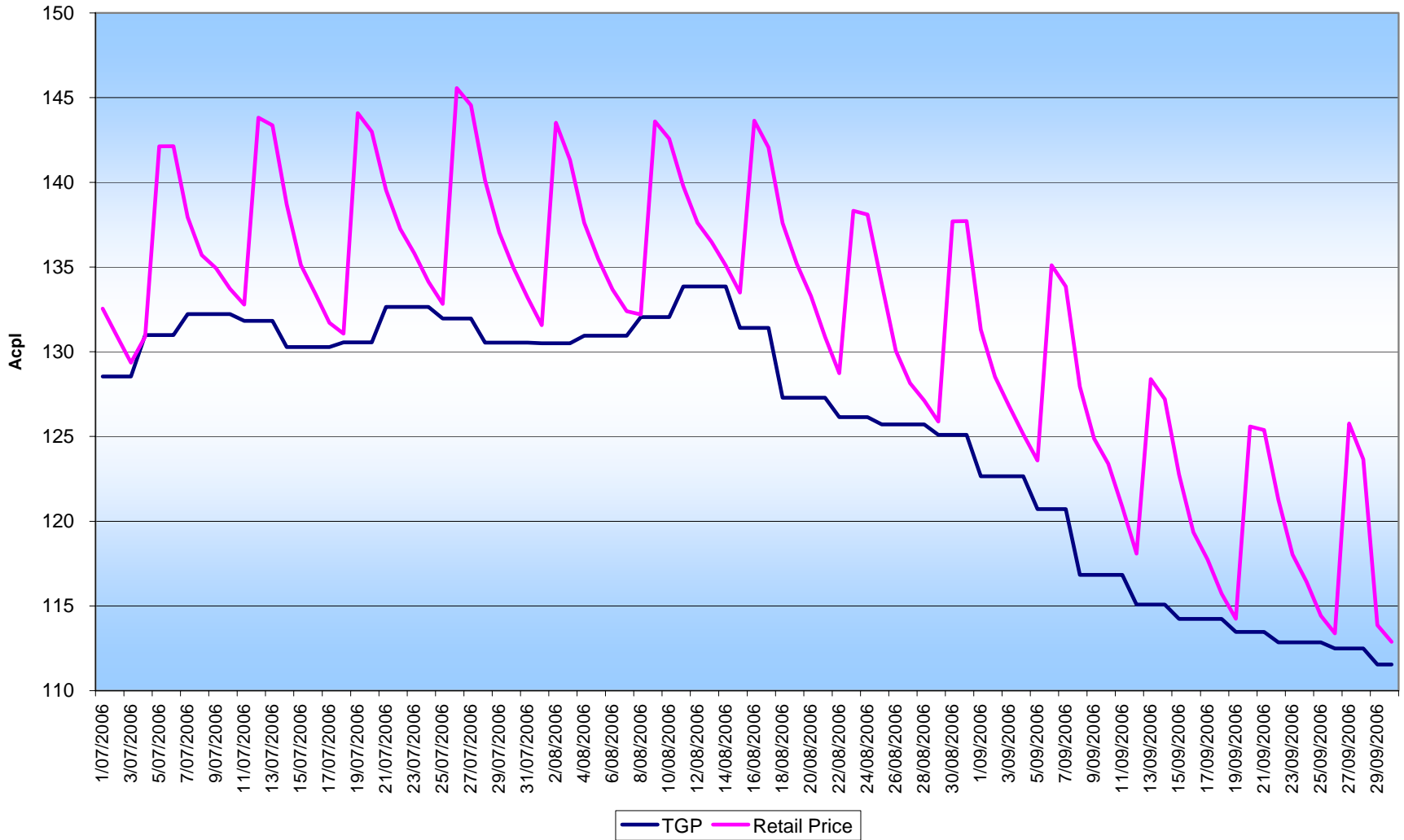
Perth Regular Unleaded BP Terminal Gate Price vs BP Retail Price*



* BP Retail Price is daily average of 4pm prices at BP Branded sites

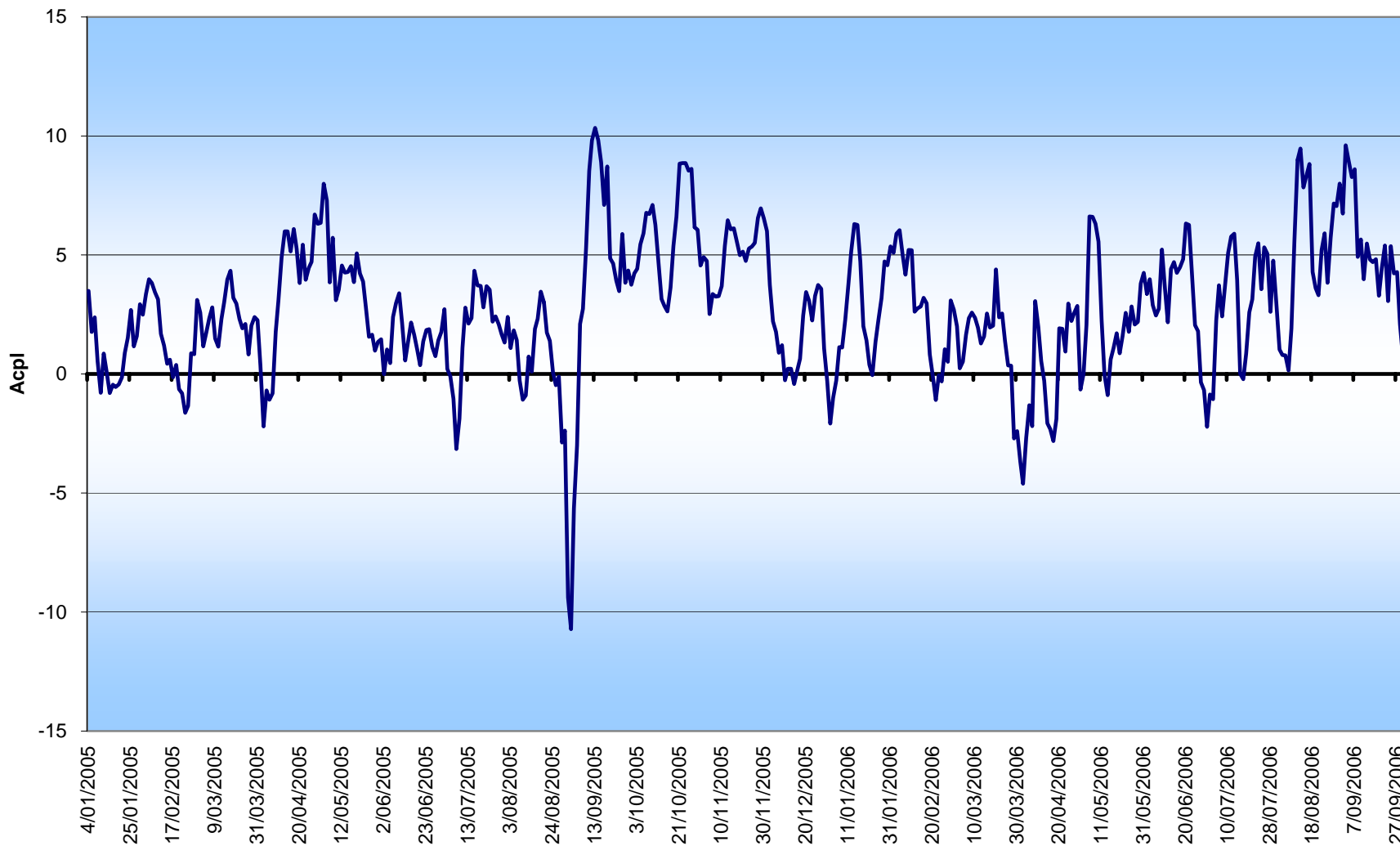


Adelaide Regular Unleaded BP Terminal Gate Price vs BP Retail Price*



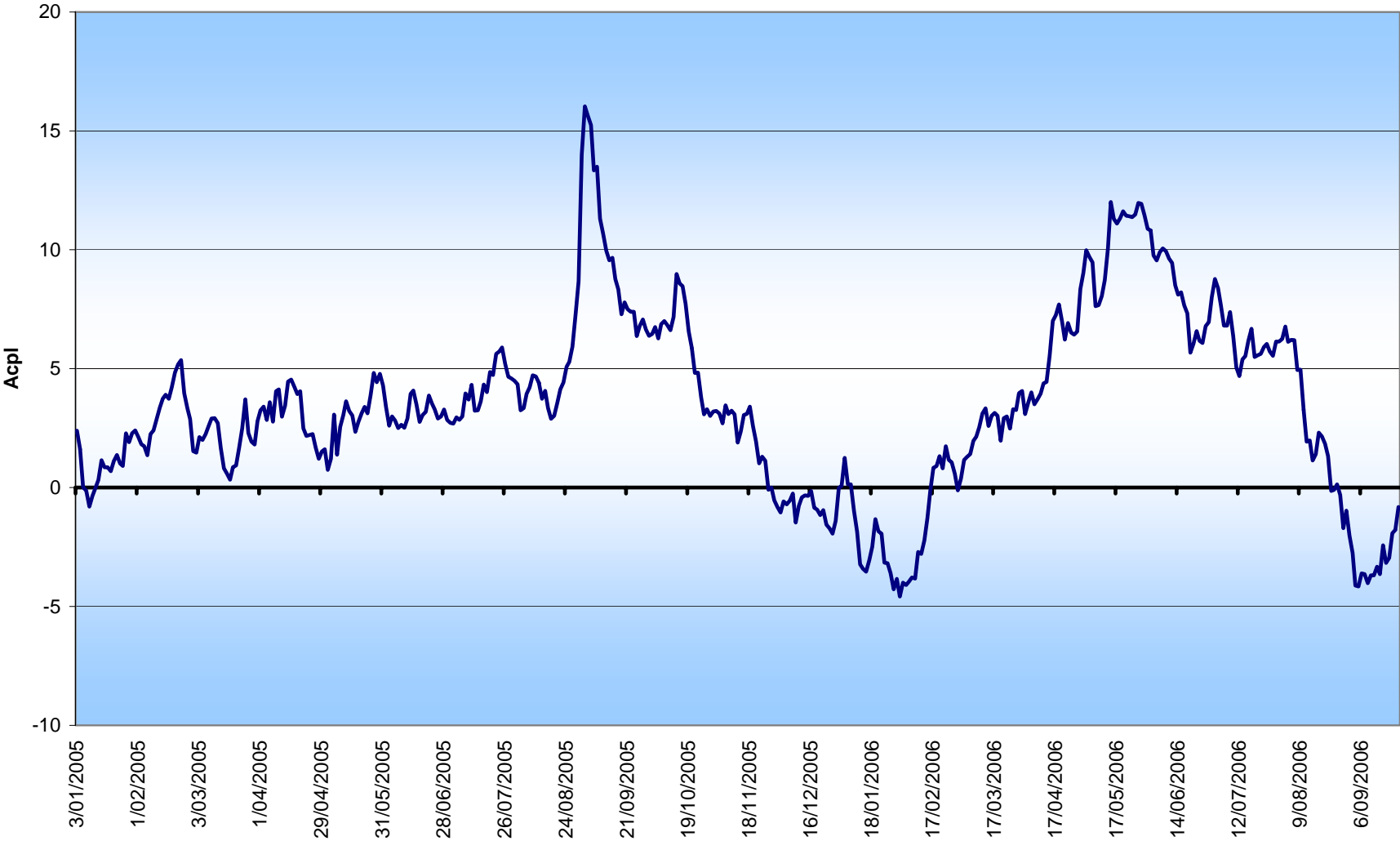
* BP Retail Price is daily average of 4pm prices at BP Branded sites

Sydney Regular Unleaded BP TGP (Terminal Gate Price) Gross Margin





Differential Between Singapore Market Price of Mogas95 and Tapis Crude



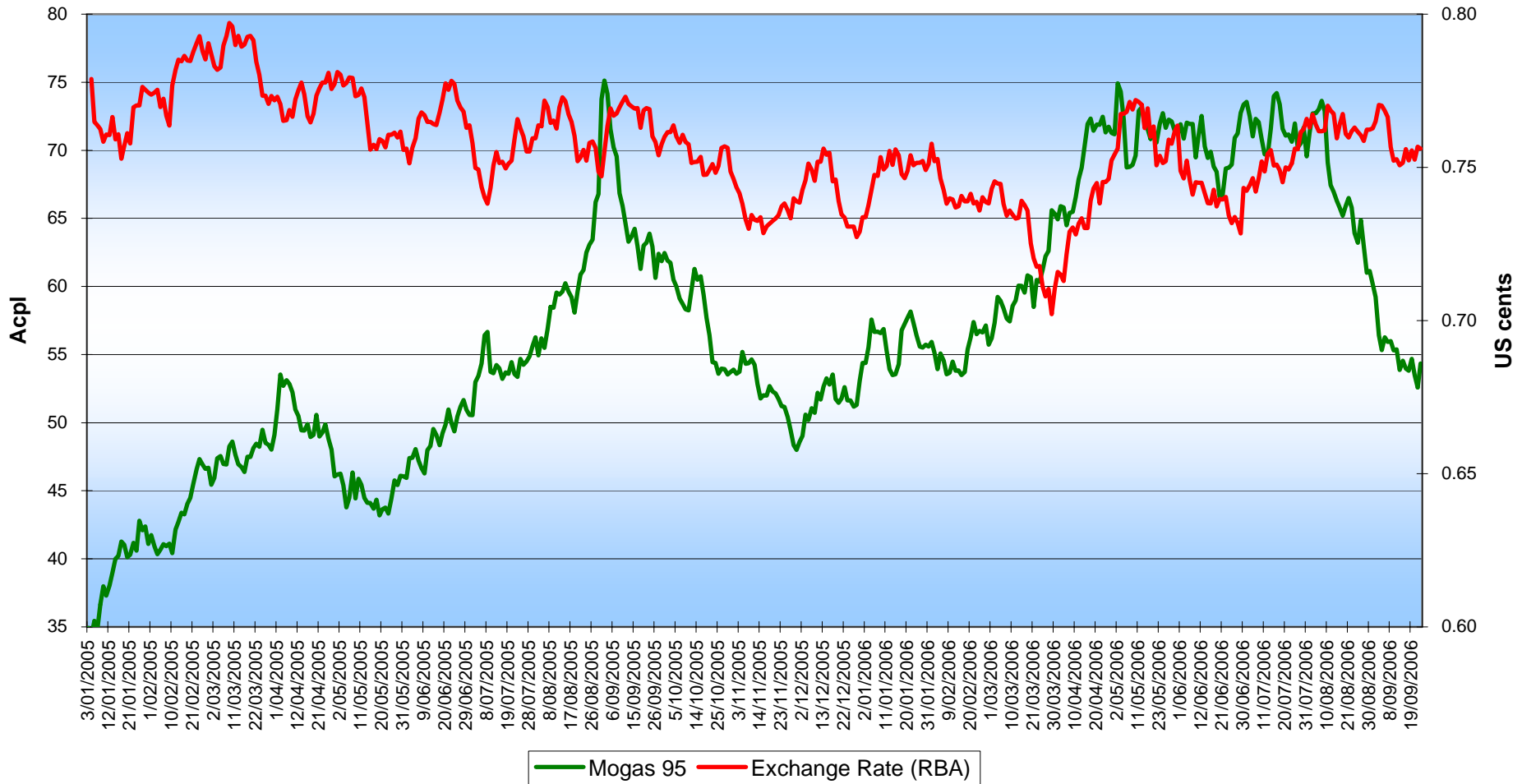
Source: Platts - Mean of Platts Singapore (MOPS) daily prices

Tapis Crude Price (Australian cents per litre)



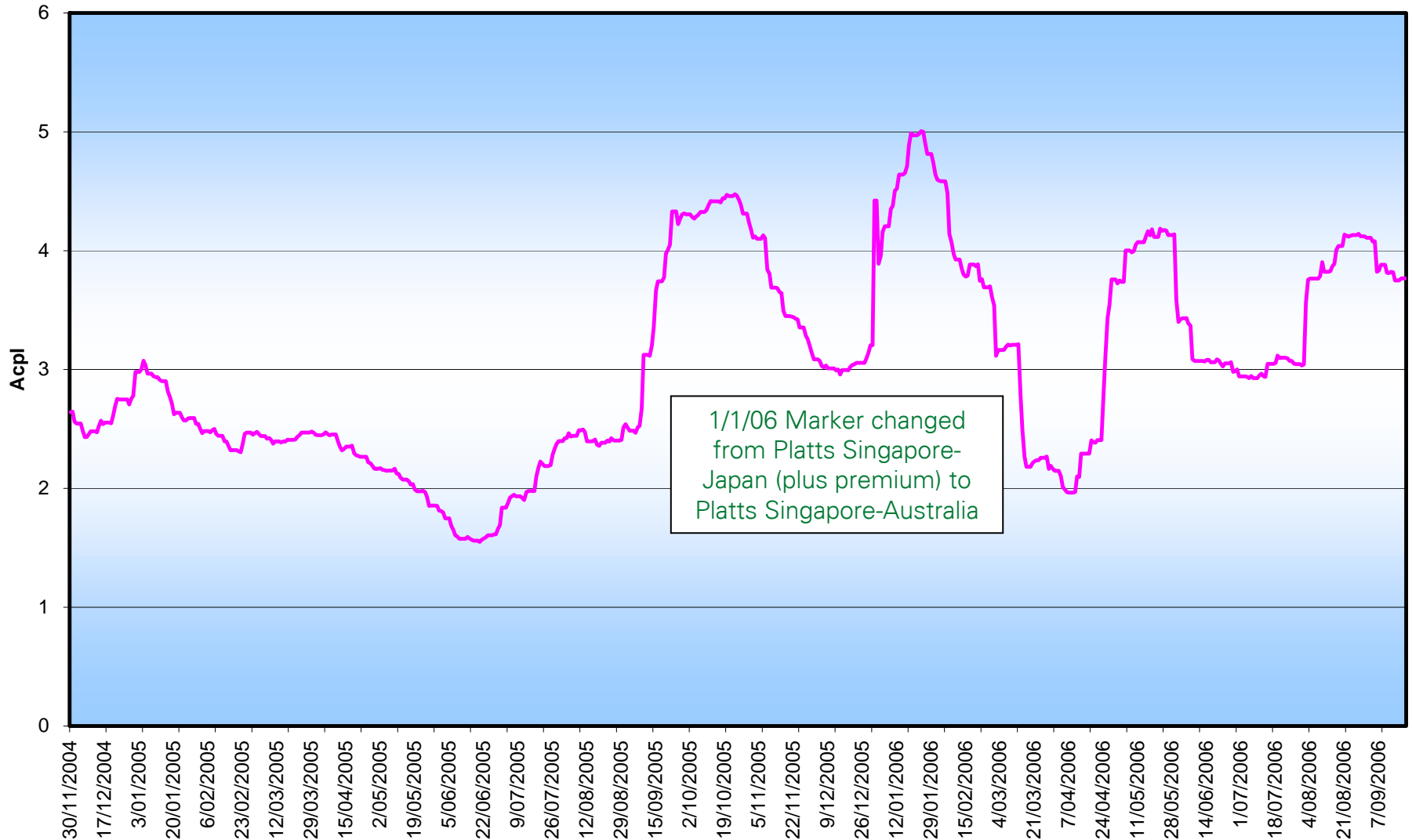
Source: Platts - Mean of Platts Singapore (MOPS) daily prices

Singapore Mogas95 (Australian cpl) & \$A/\$US Exchange Rate



Source: Platts - Mean of Platts Singapore (MOPS) daily prices, and Reserve Bank of Australia exchange rates

Shipping Costs (Regular Unleaded) - Average of Capital Cities



Regular Unleaded Quality Premiums - Average of Capital Cities

