

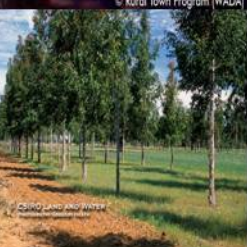
Regional Delivery

- Lack of trust between State and Federal Governments has resulted in a four year delay in getting funds to the ground.
- At this point we are concerned that there is still uncertainty of the method of delivery of these funds and whether they will be delivered effectively.
- The Federal Government supported by the States have advocated regional delivery of funds.
- **This has resulted in the compulsory establishment of a new level of bureaucracy that has no structure or line of command with a top down approach ignoring long established sub regional and structured groups within the region.**

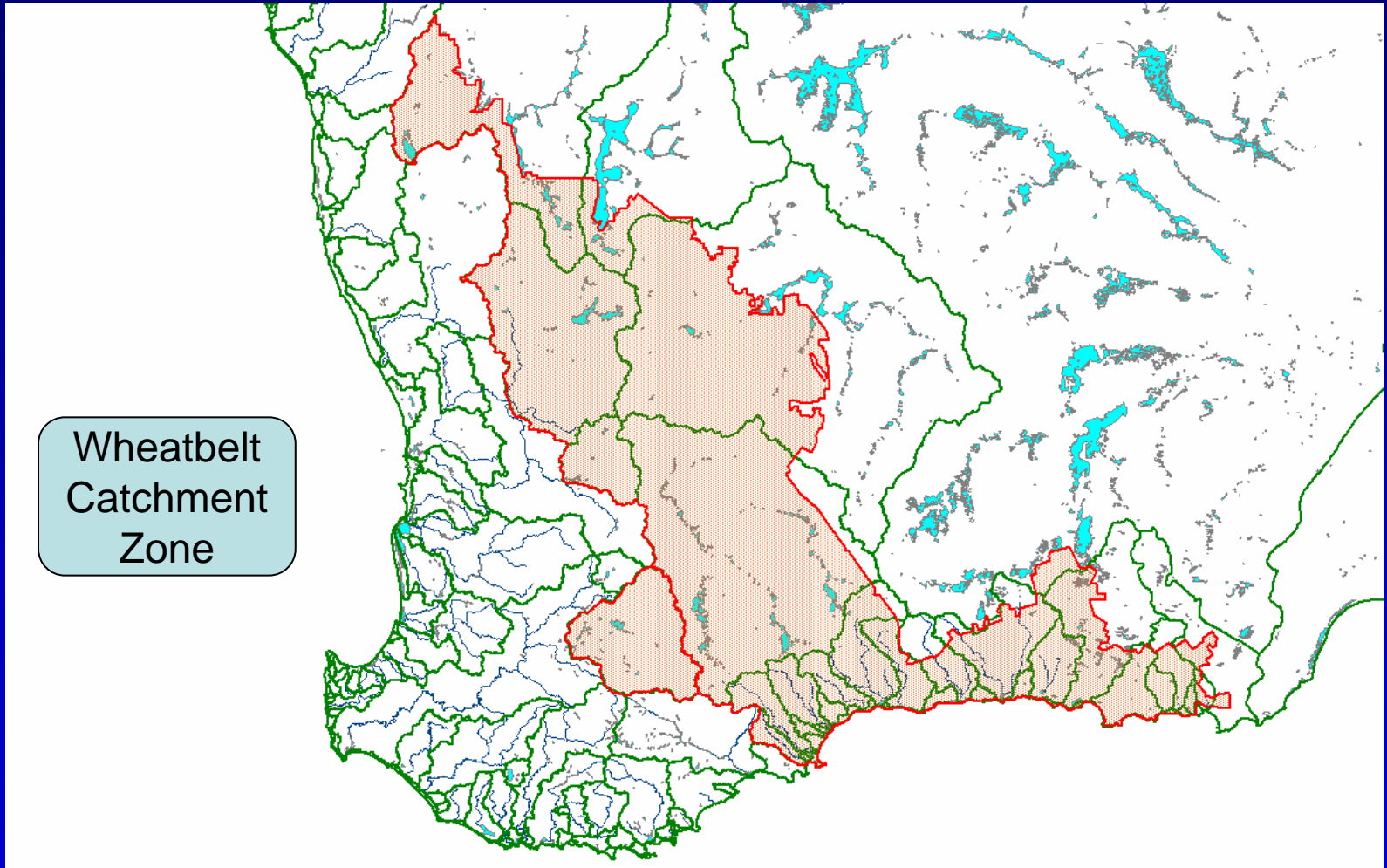
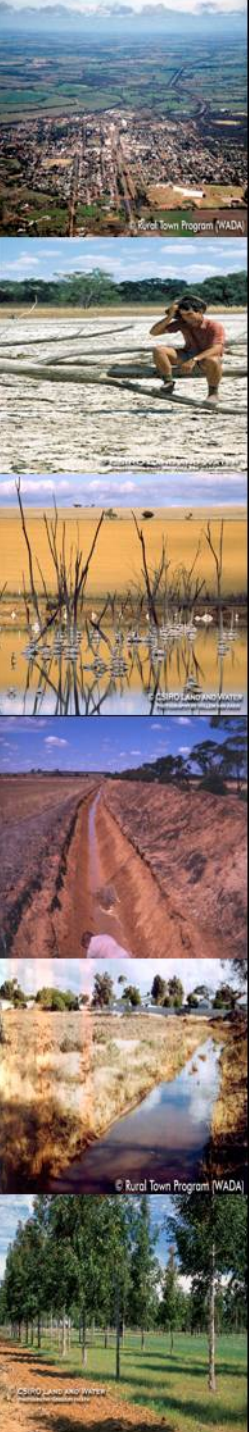


W.A.'s Salinity Investment Framework

- WA Government Agencies have dominated the establishment of a framework for the investment of public funds to address salinity and water quality problems.
- This framework is based on economic rationalism and questionable scientific evidence and is open to manipulation.
- The frame work also puts a strong emphasis on the investments targeting public benefit rather than private gain with the public benefit mainly relating to biodiversity rather than national economic strength



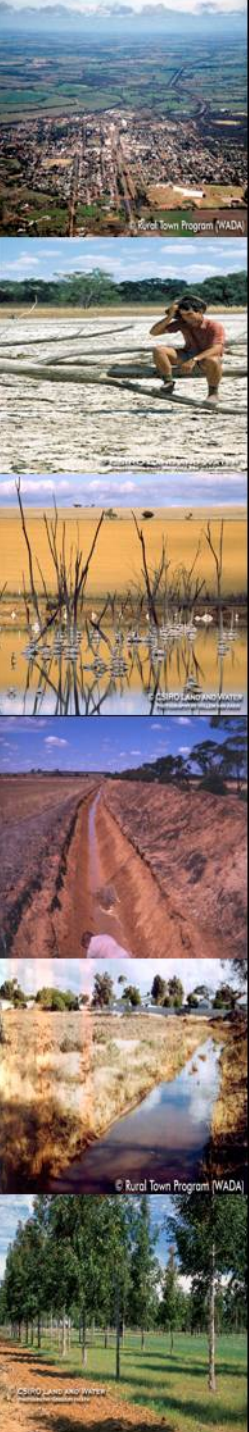
Defining the Wheatbelt catchment zone



Wheatbelt
Catchment
Zone

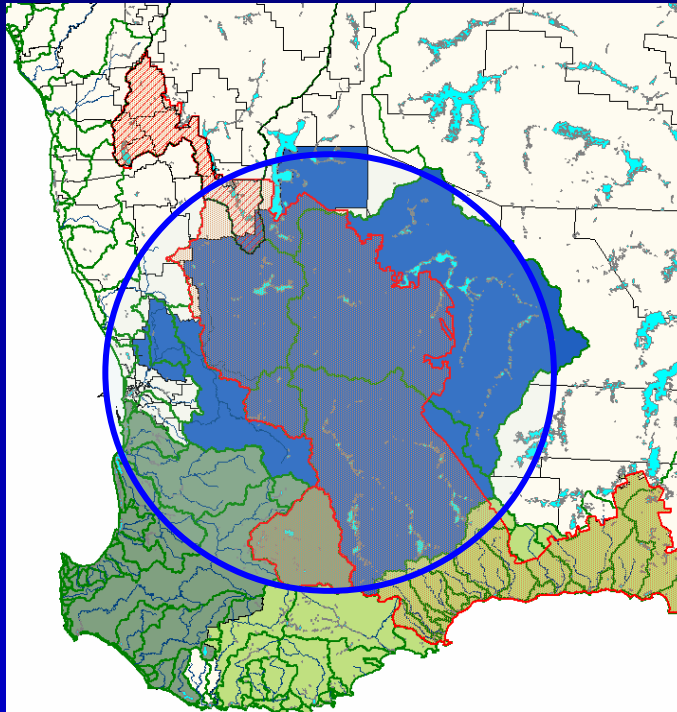
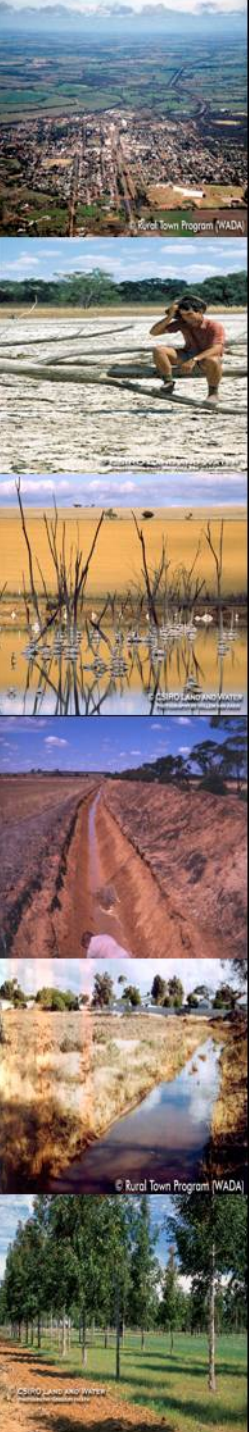
It is interesting to note that the defined area of the Wheatbelt follows closely the rainfall isohyets for the South-West land division

Dumbleyung Landcare Zone Objectives



- Ready to begin implementation of large scale projects
- Develop integrated water management and drainage strategy for the zone
- 17 projects forming an integrated practical system
- Continued investment to see implementation of schemes.
- Address issue of governance of drainage
- Formation of agency-independent drainage board.
- Include large scale engineering projects in investment plans.

WA Channel Management Group Development



- Strategy to drain and treat surplus water from the Wheatbelt for deploying to the ocean via a 900km channel.
- 230 active farmer members and 10 local government members.