

# Completed suicides of Western Australians: A Psychological Autopsy Study

Kate Miller and Deborah Robertson

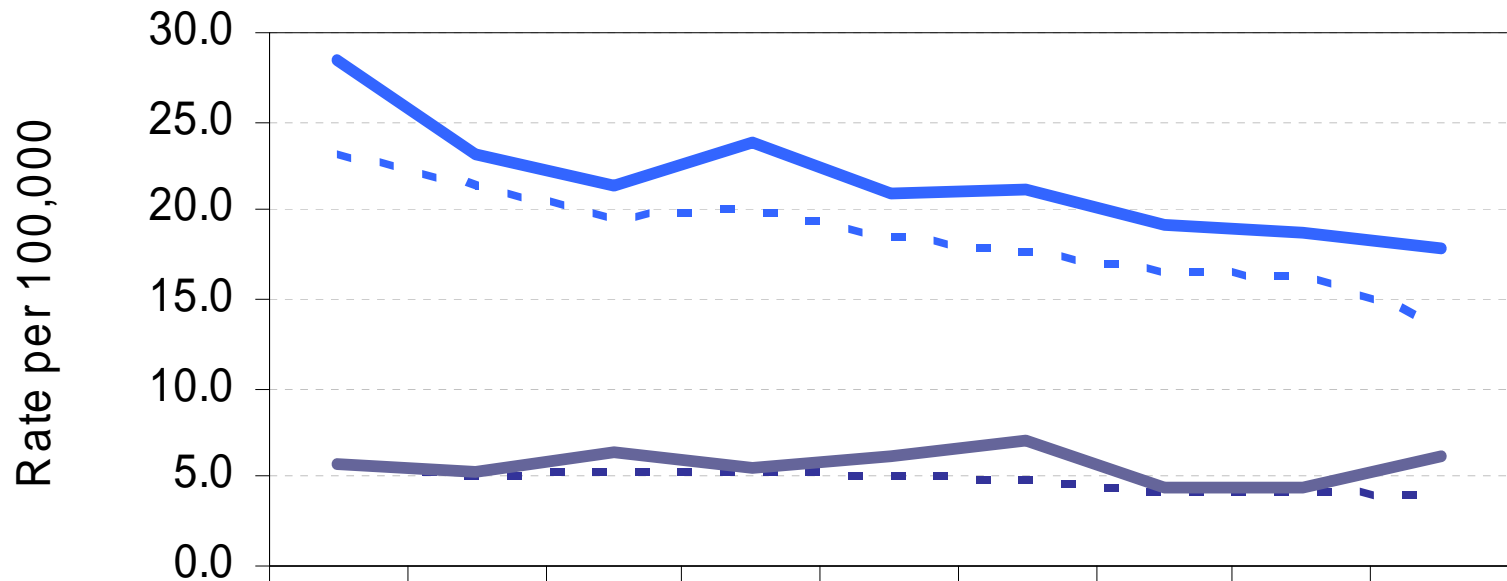
Senate Inquiry into Suicide in Australia

31 March 2010

# The Western Australian Coroners Database

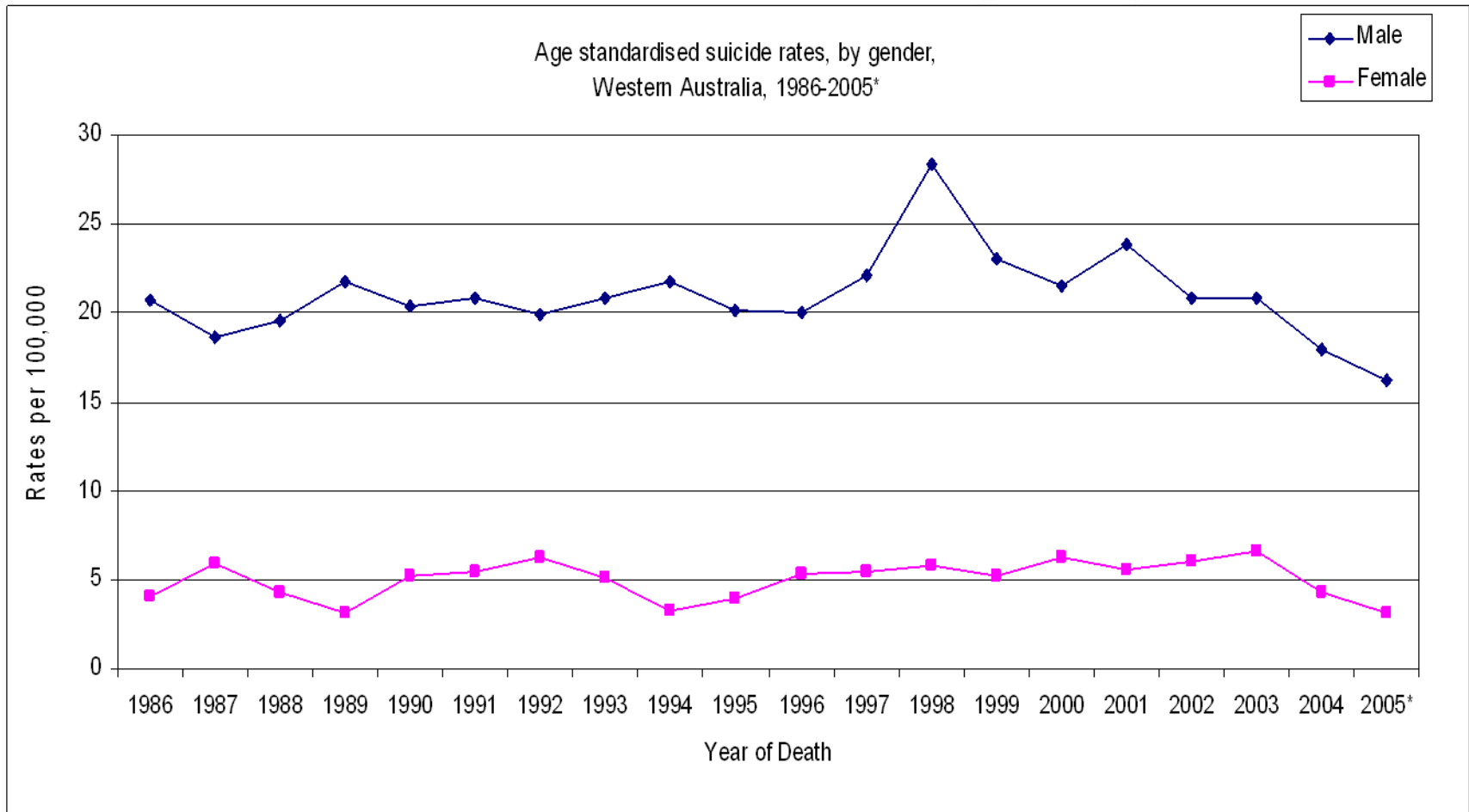
- Established in 1989;
- Contains all WA suicides from 1986 to 2006 (n=4,787);
- As a minimum set of data it includes:
  - Police reports,
  - Forensic reports (incl. Toxicology),
  - *Form 1* (Psychological Autopsy, last review: 2009). This provides information on:
    - Medical conditions
    - Mental illness
    - Key life events
    - Past suicidal behaviour

# Australian and Western Australian Suicide Rates by Gender - 1998-2006

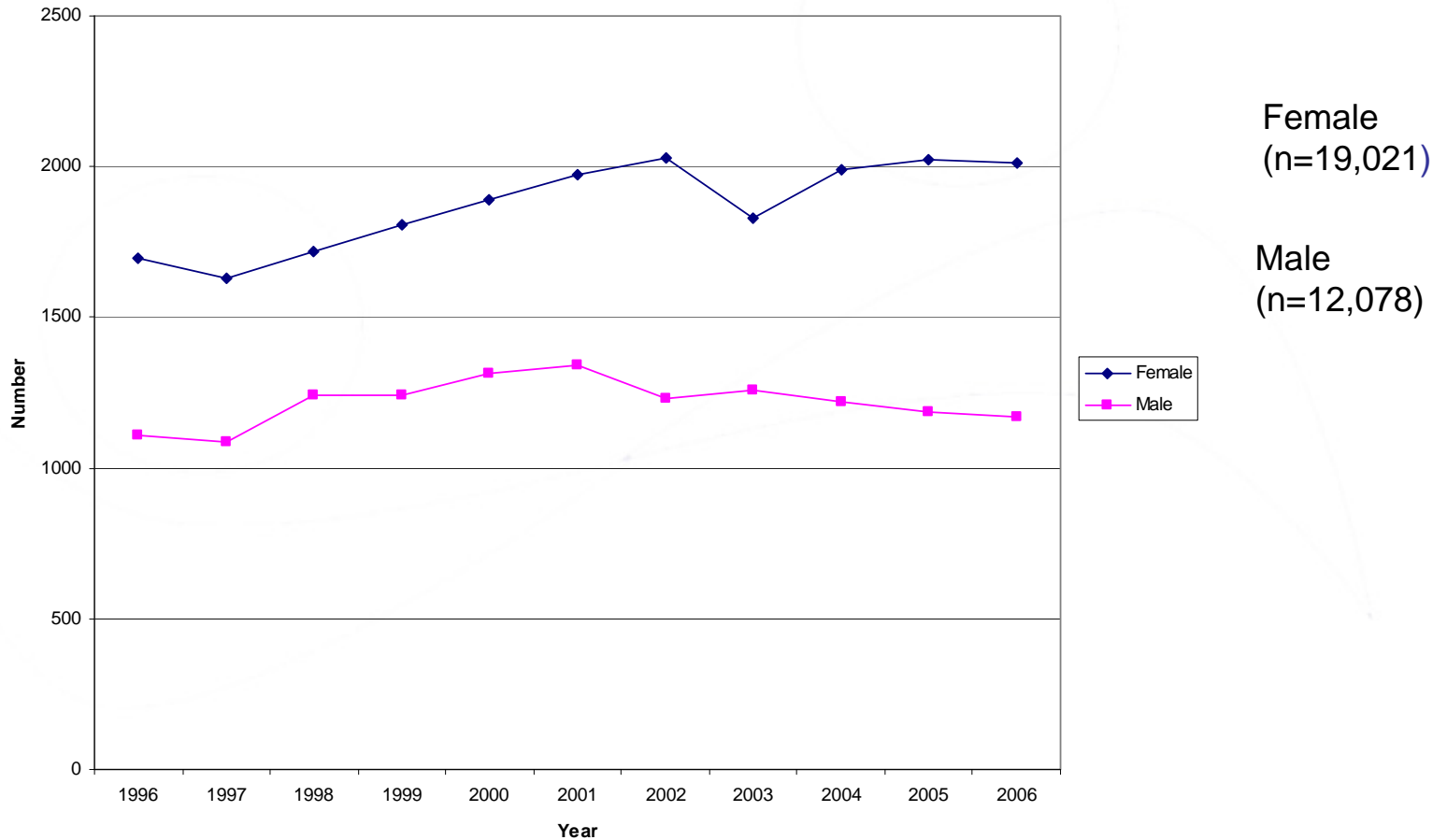


	1998	1999	2000	2001	2002	2003	2004	2005	2006
- - - Australian males	23.1	21.3	19.6	20.1	18.6	17.6	16.6	16.4	13.6
— WA males	28.5	23.2	21.5	23.9	20.9	21.1	19.2	18.8	17.9
- - - Australian Females	5.7	5.1	5.2	5.3	5.1	4.8	4.3	4.3	3.9
— WA females	5.8	5.3	6.4	5.6	6.1	7.1	4.5	4.4	6.2

# WA suicide trends 1986-2005



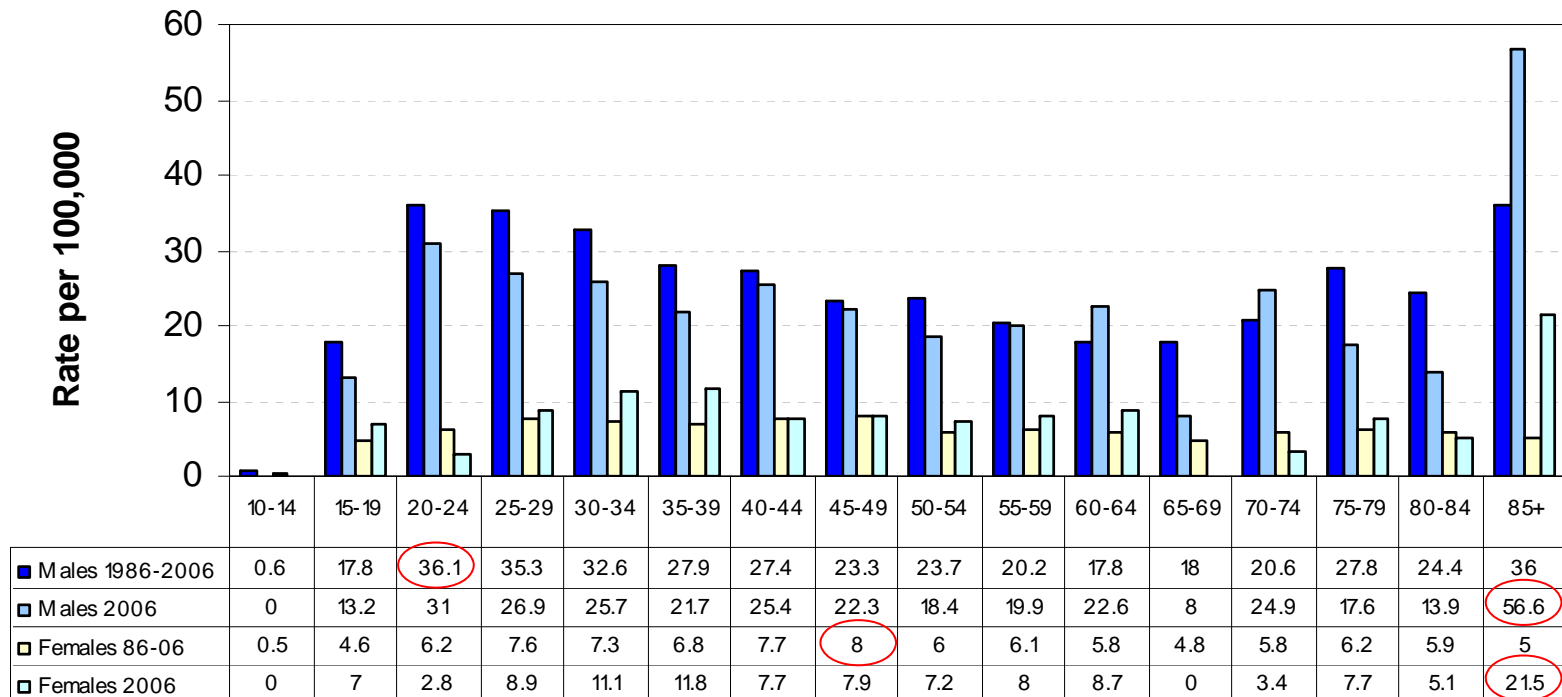
# Deliberate Self-harm Admissions WA 1996-2006 (N=31,099)



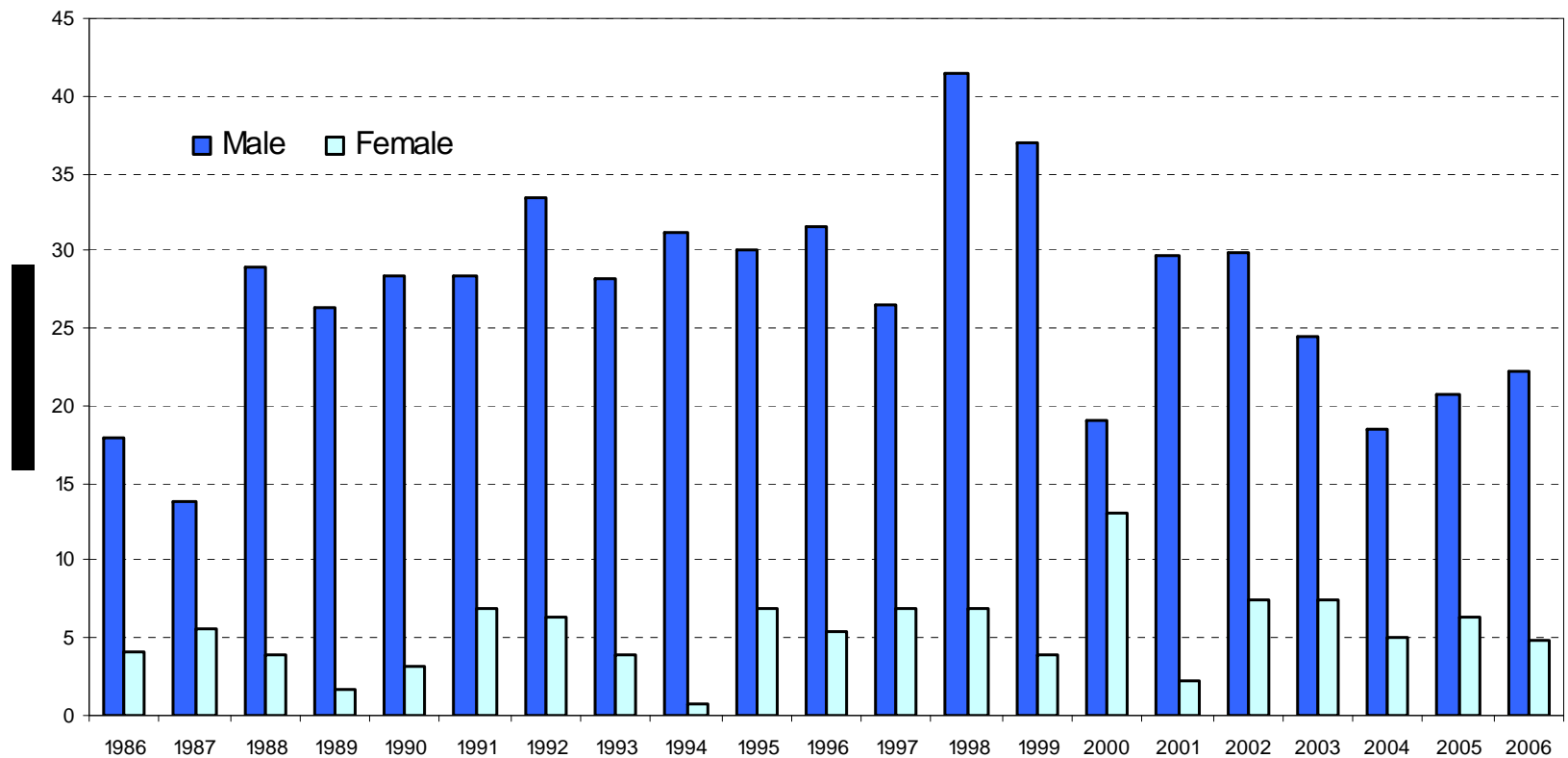
(Source: Epidemiology Branch, Dept of Health, June, 2007)

# DEMOGRAPHICS

# Age specific rates by gender for Western Australians, 1986-2006 (n= 4,787)

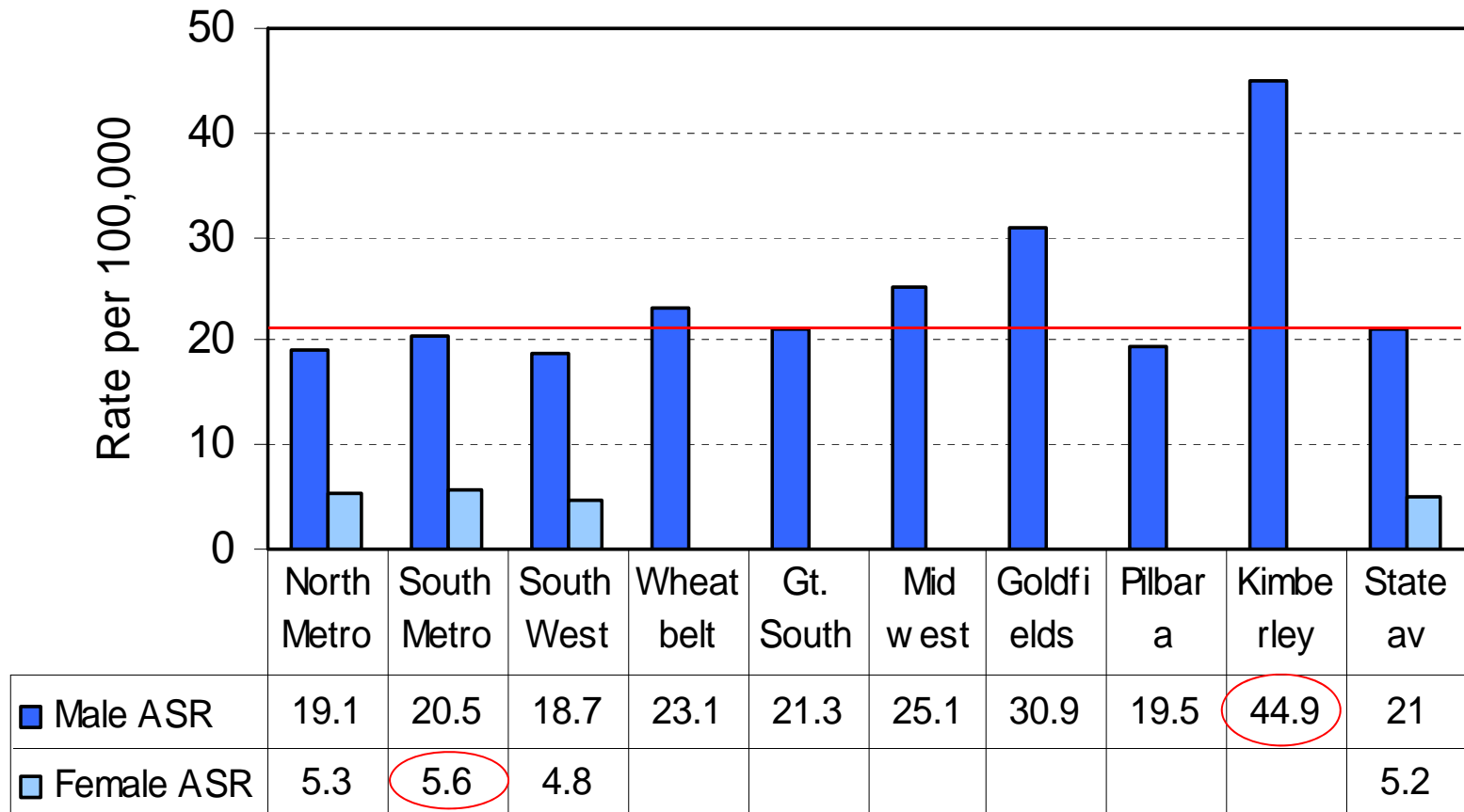


# Youth Suicide Rate (15-24 years), Western Australia, 1986-2006 (n=925)

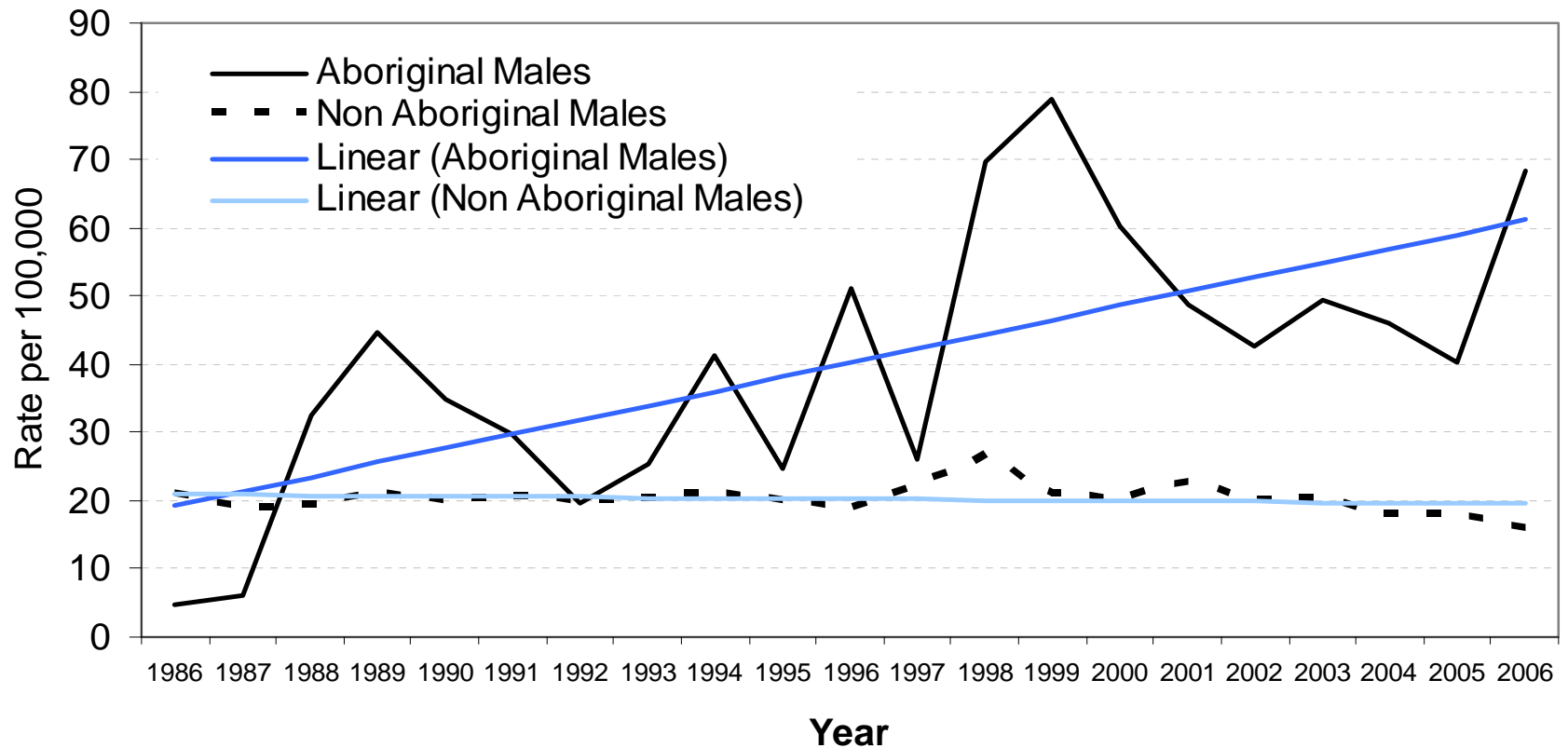




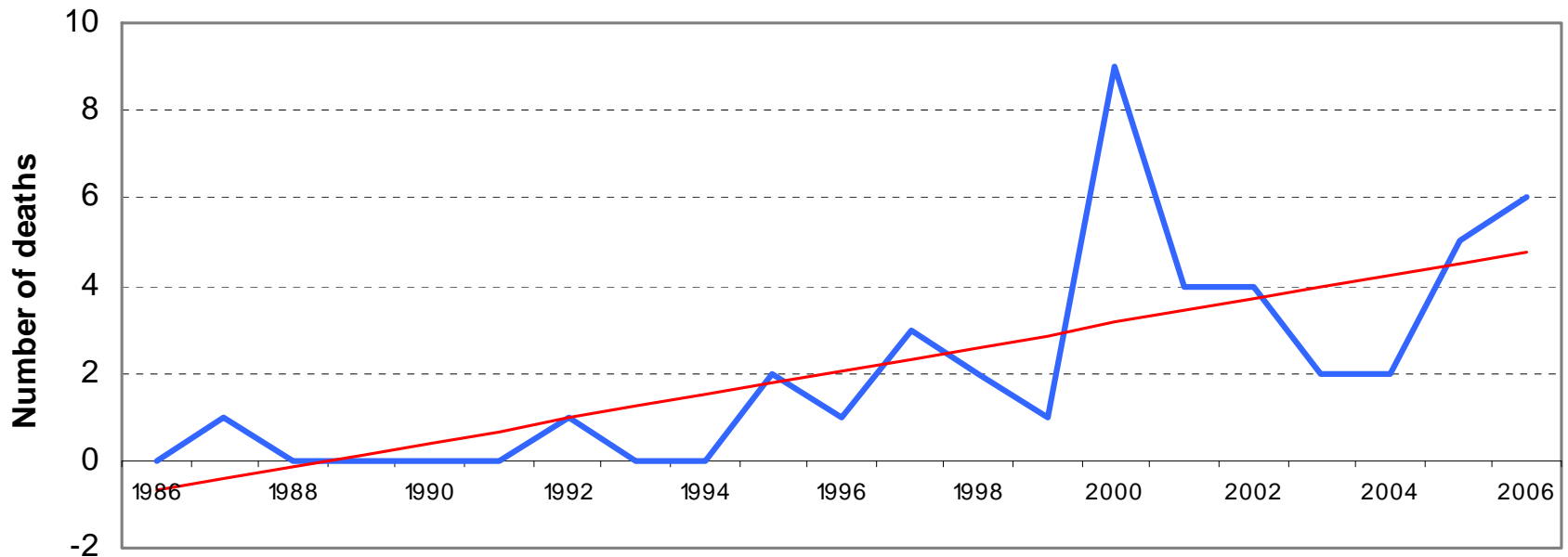
# Suicide rates by Health Zone, Western Australia 1986-2006 (n= 4,787)



# Age-standardised suicide rate for Aboriginal and non Aboriginal Western Australian males, 1986-2006 (n=3,840)



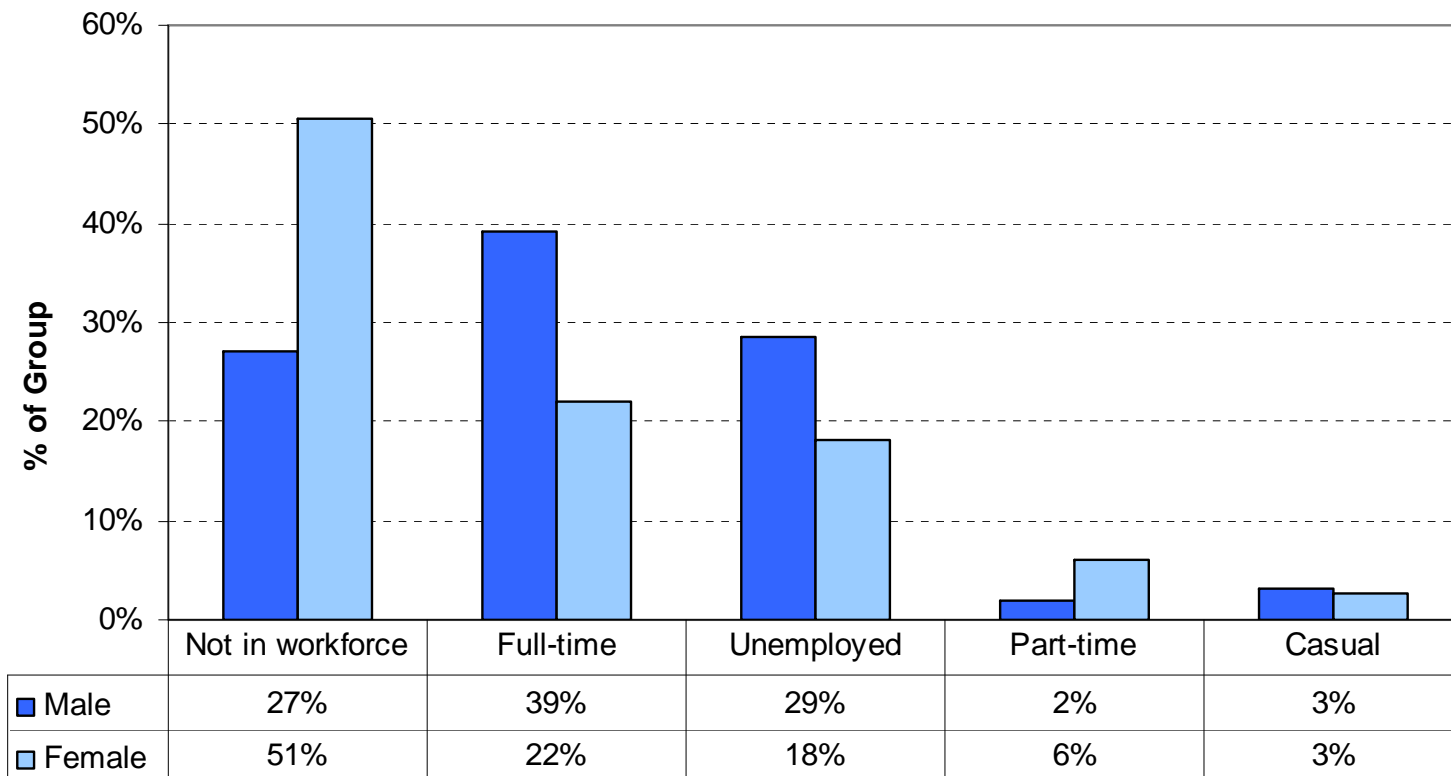
# Suicide deaths of Western Australian Aboriginal females, 1986-2006 (n=43)



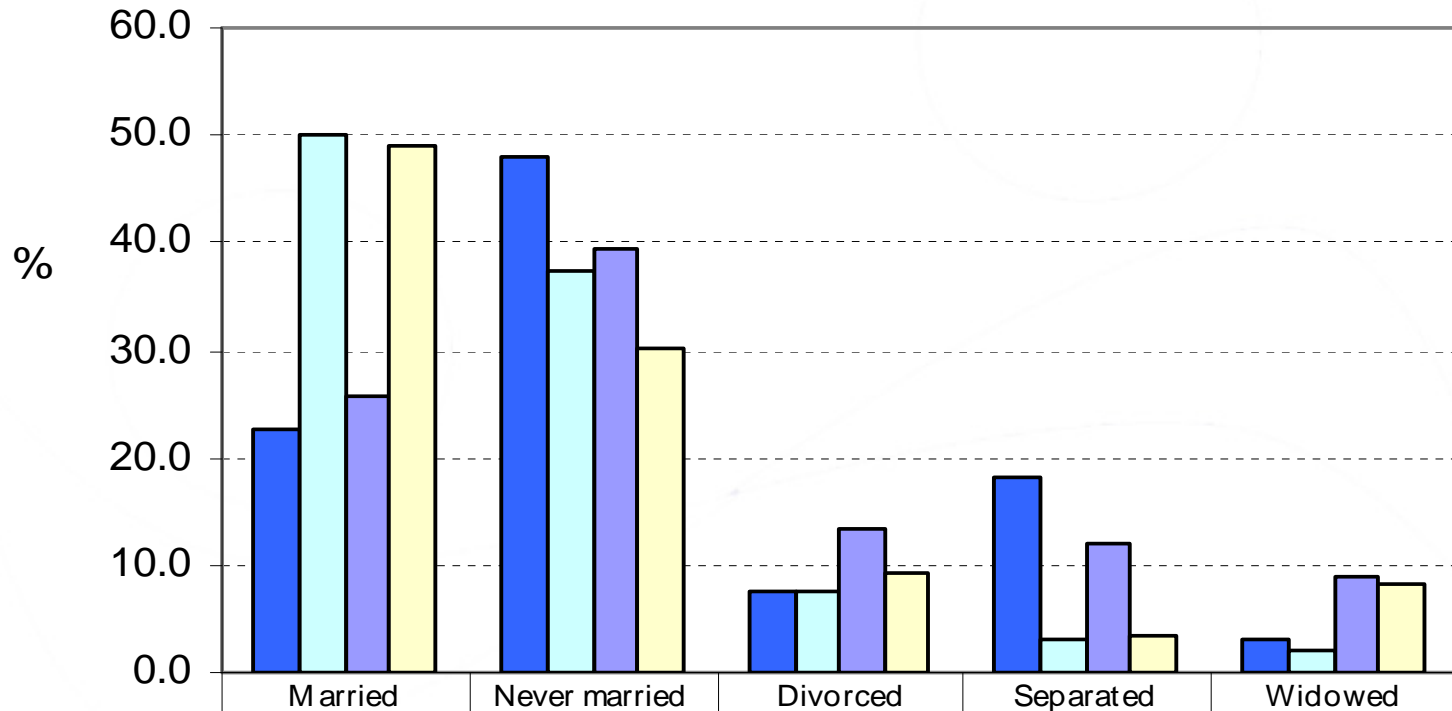
# Risk factors for Aboriginal and Non Aboriginal people, 2006 (n= 4,787)

RISK FACTORS	ABORIGINAL PEOPLE	NON ABORIGINAL PEOPLE
Age	44% <25 years	18% <25 years
Gender	83% male	75% male
Psychopathology	21%	41%
Substance Abuse	56%	29%
Issues with family/friends	41%	22%
Legal troubles	22%	13%
Death of someone close	20%	14%
Victim of sexual abuse	9%	8%

# Employment Status 1997-2006 (n=2,605)



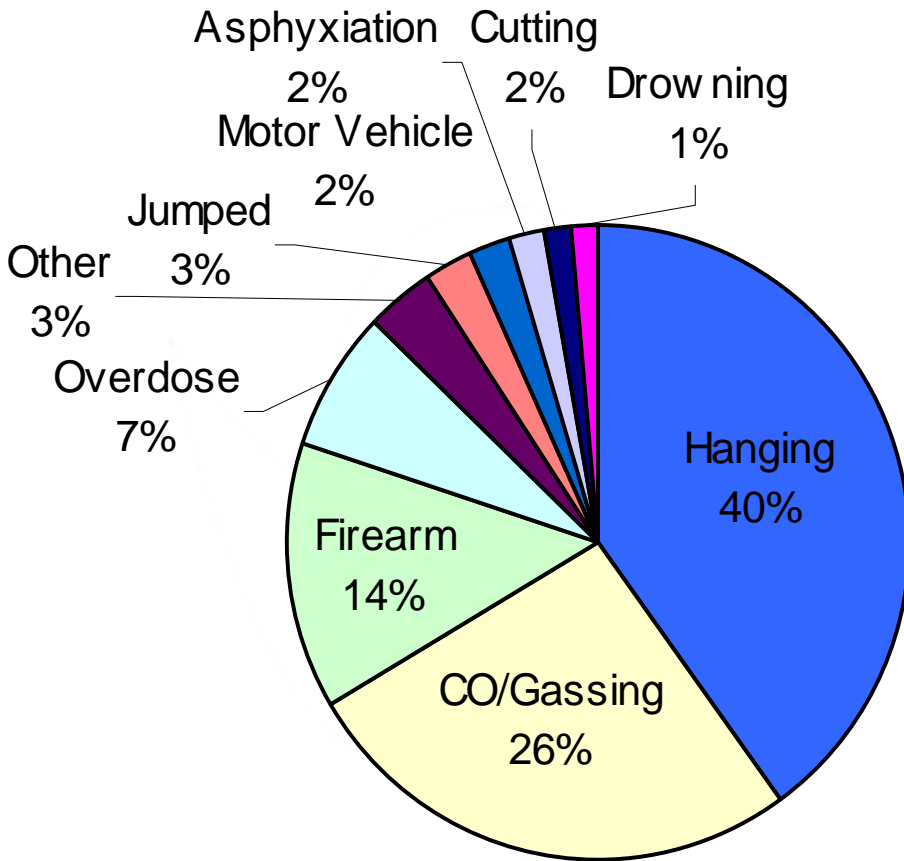
# Marital status 1986-2006 (n= 4,787)



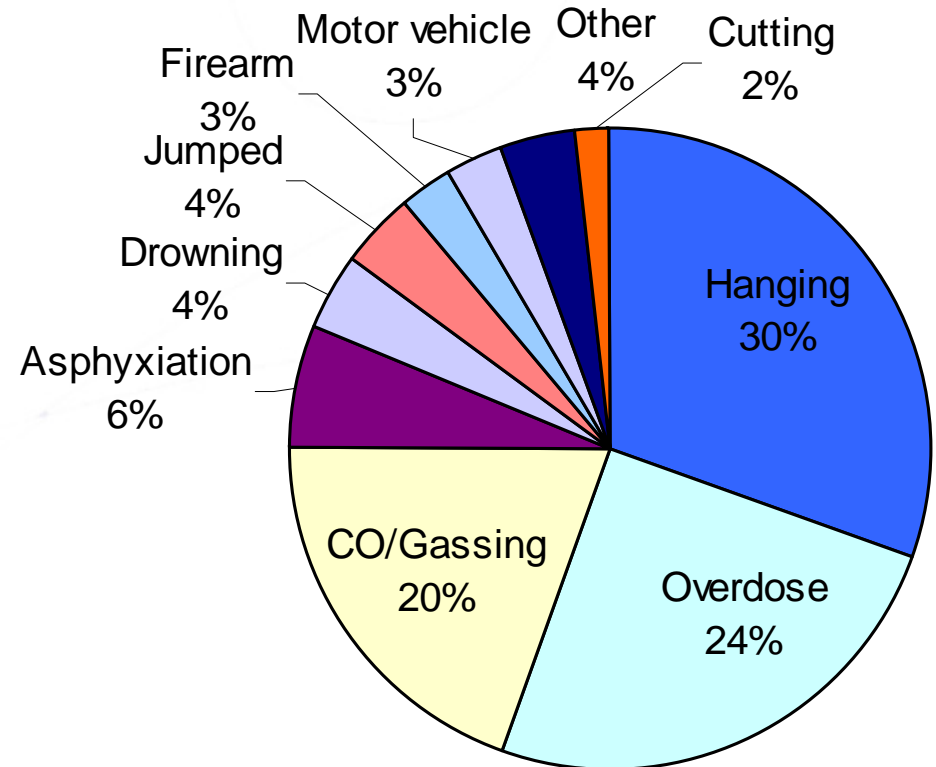
■ Male suicide deaths	22.7	48.1	7.6	18.3	3.3
■ Male population	50.0	37.3	7.6	3.0	2.1
■ Female suicide deaths	25.9	39.4	13.5	12.1	9.1
■ Female population	49.0	30.2	9.4	3.3	8.1

# SUICIDE METHODS

# Suicide Methods, 1986-2006 (n= 4,787)



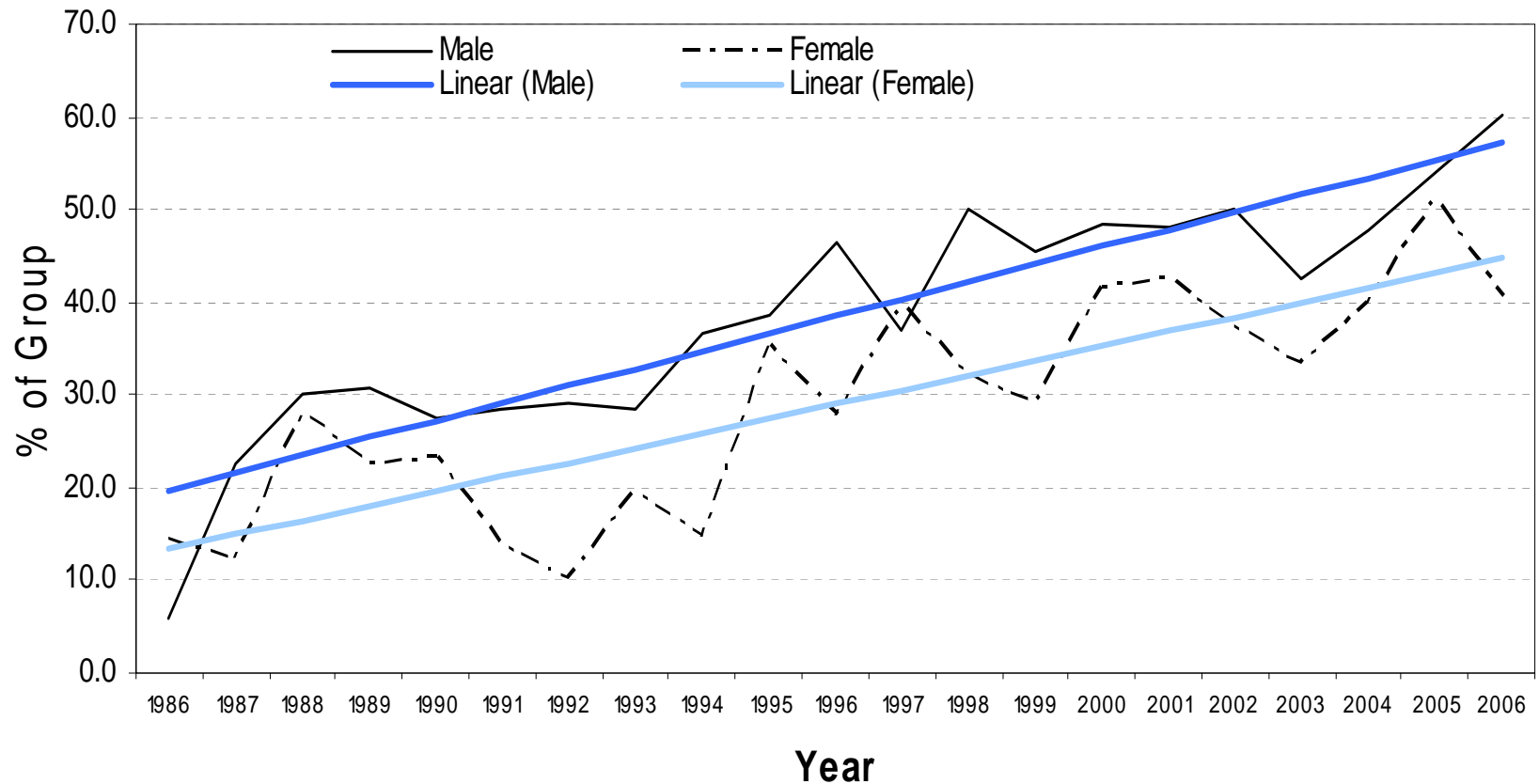
**Males**



**Females**

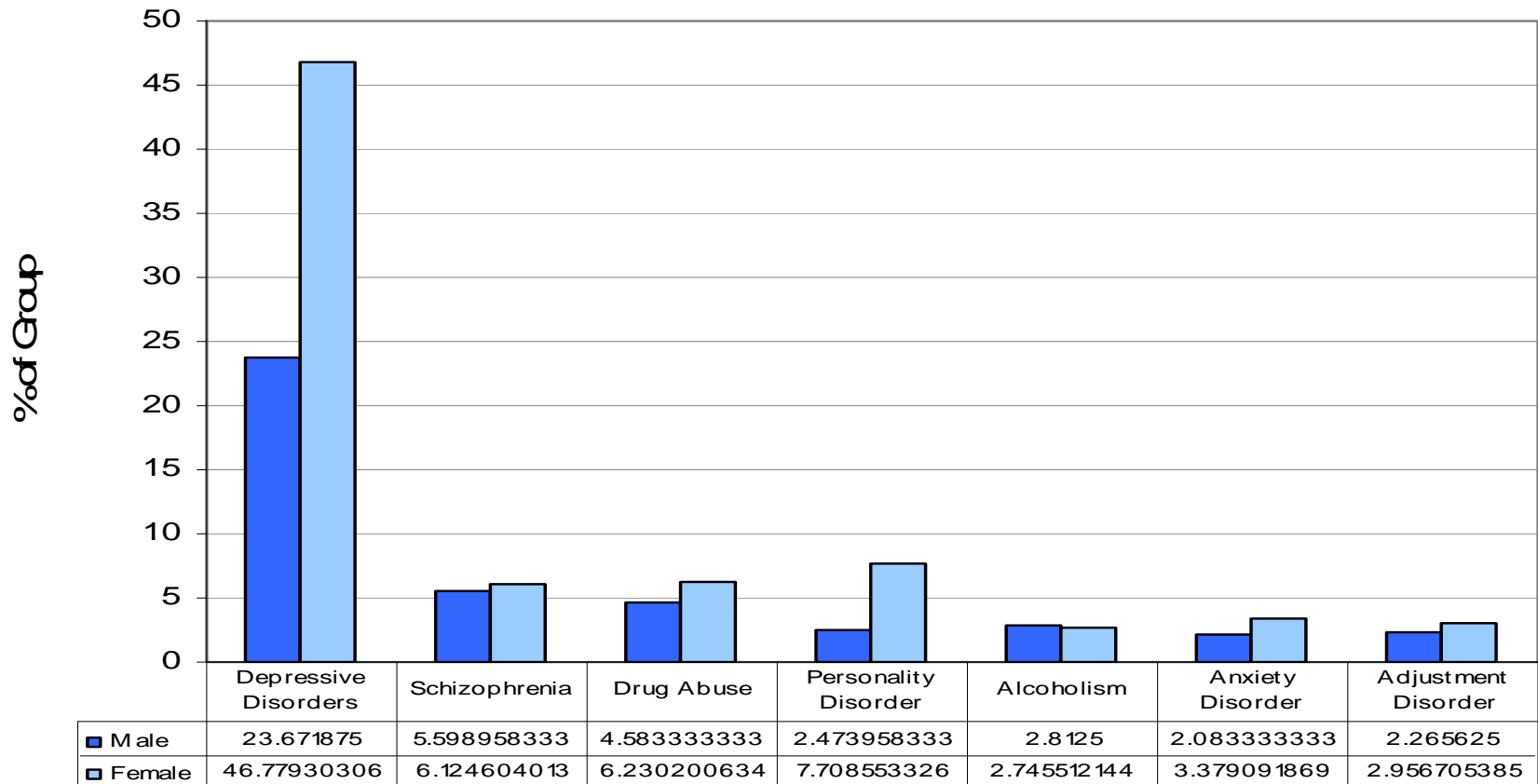


# Suicide Methods – Trends in hanging, 1986-2006 (n= 4,787)

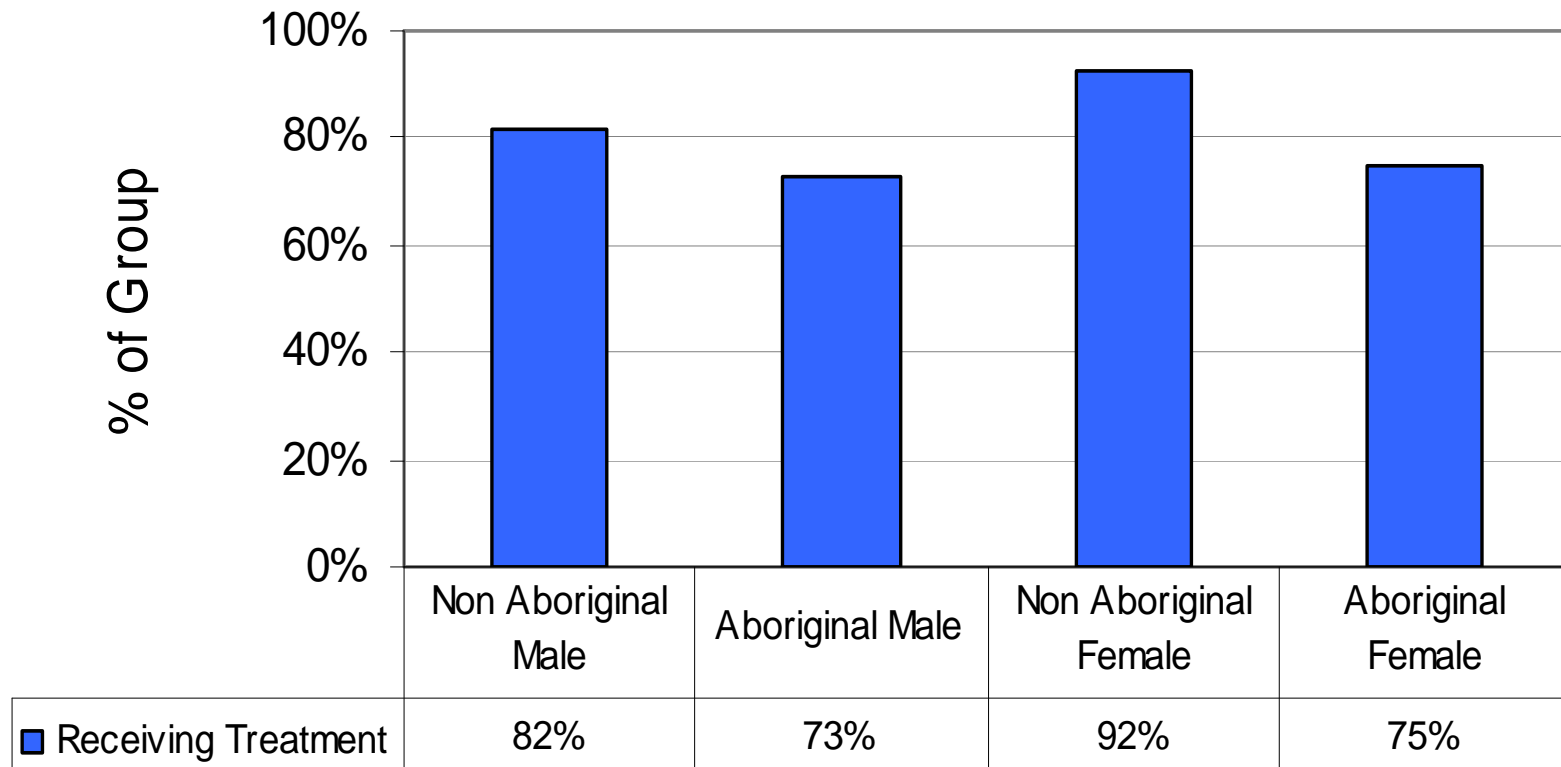


# MENTAL ILLNESS

# Diagnosed psychiatric conditions



# Service use access among those with a diagnosed mental illness (n=1,630)



\*Three months prior to death

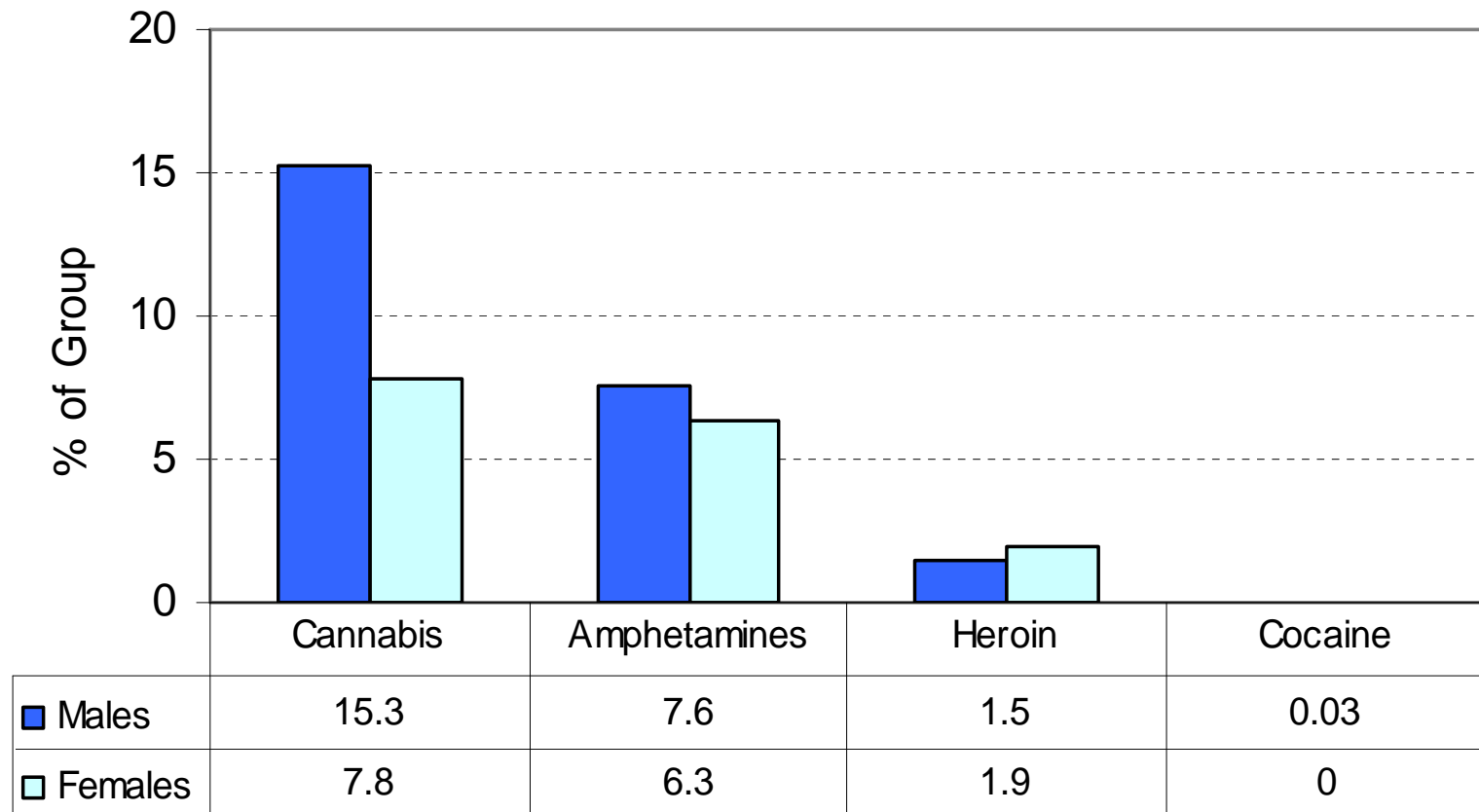
# Completed suicides following discharge from hospital, 1986-2002 (n=1,607)

Time since discharge	Males	Females
Same day	15.0%	20.4%
1 week	22.5%	28.6%
1 month	30.6%	38.3%
3 months	41.7%	49.6%
12 months	60.3%	71%
<i>More than 12 months</i>	<i>39.7%</i>	<i>29%</i>

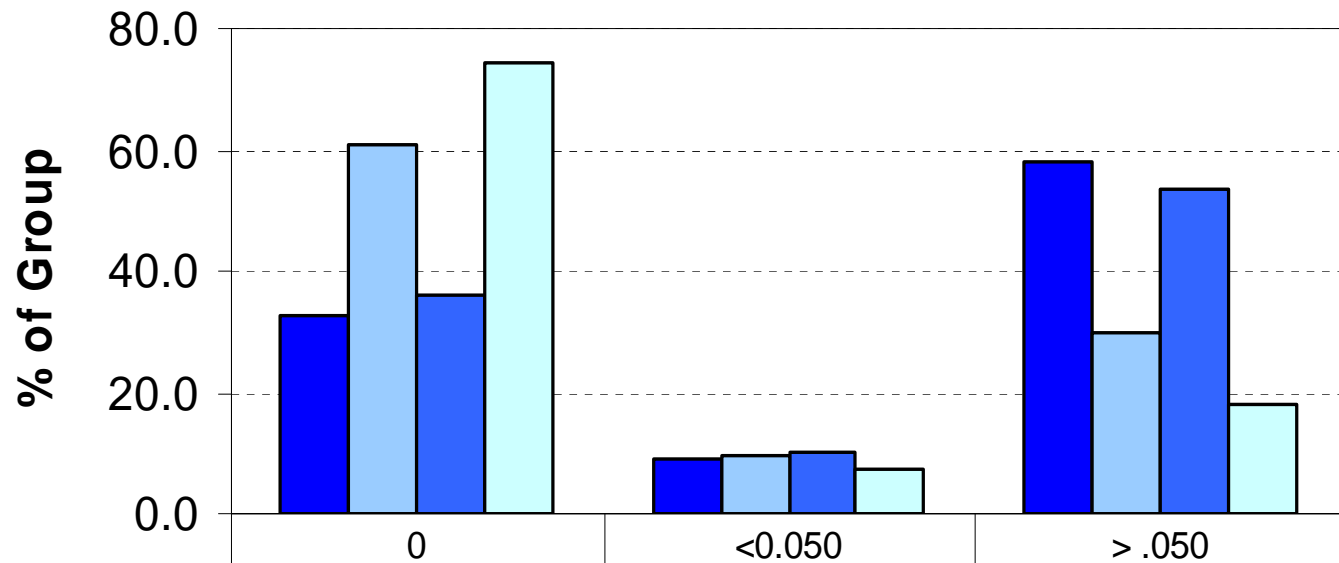
NB – Denominator is number of people who had completed suicide who had been admitted to a psychiatric hospital or a public hospital for psychiatric treatment at some point during their lifetime.

# ALCOHOL AND OTHER DRUGS

# Toxicology - presence of illicit substances, 1986-2006 (n= 4,787)



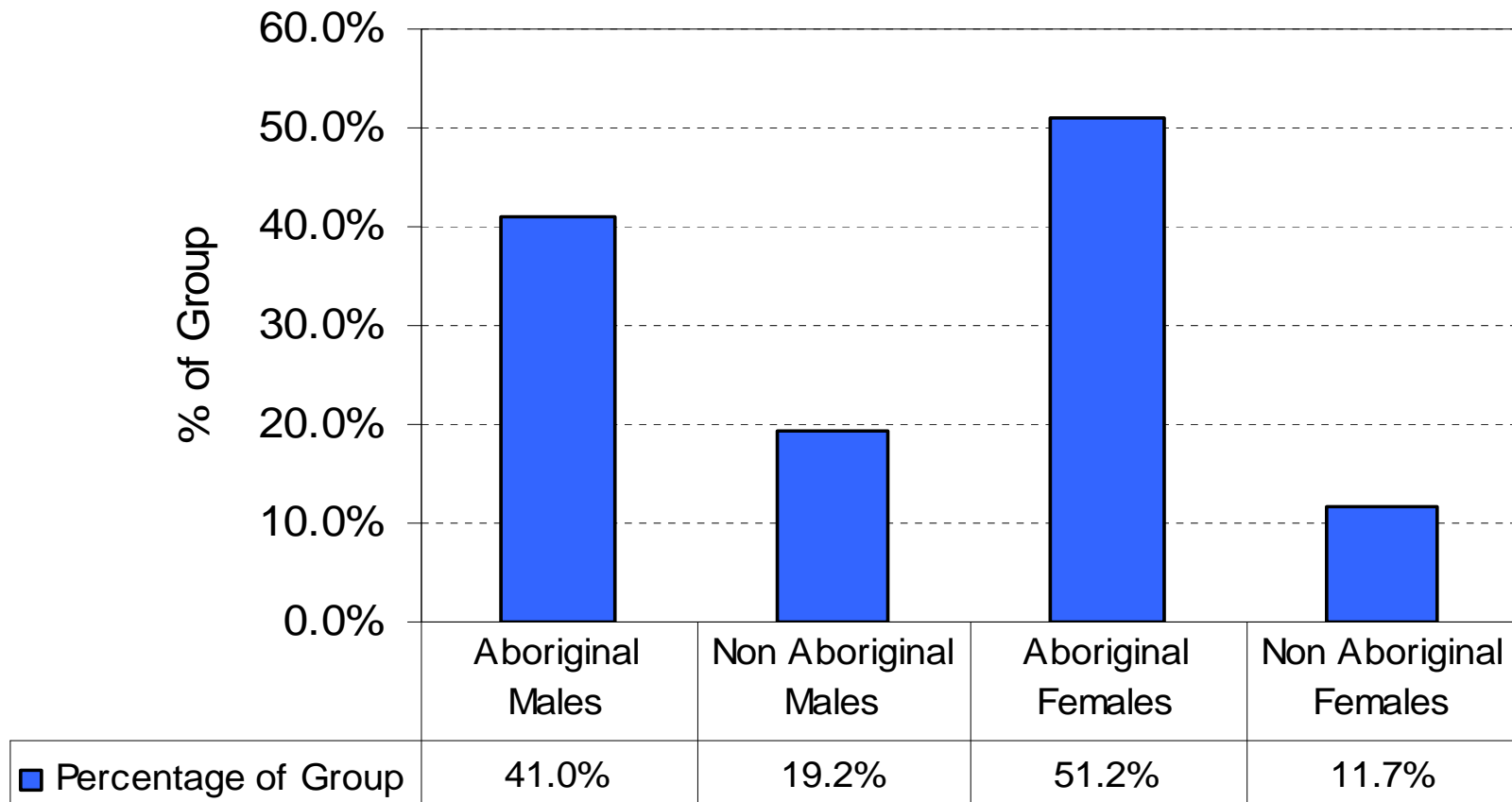
## Blood alcohol levels (n= 4,787)



■ Aboriginal Male	32.9	8.9	58.2
■ Non Aboriginal Male	60.6	9.5	29.9
■ Aboriginal Female	35.9	10.3	53.8
■ Non Aboriginal Female	74.6	7.5	17.9

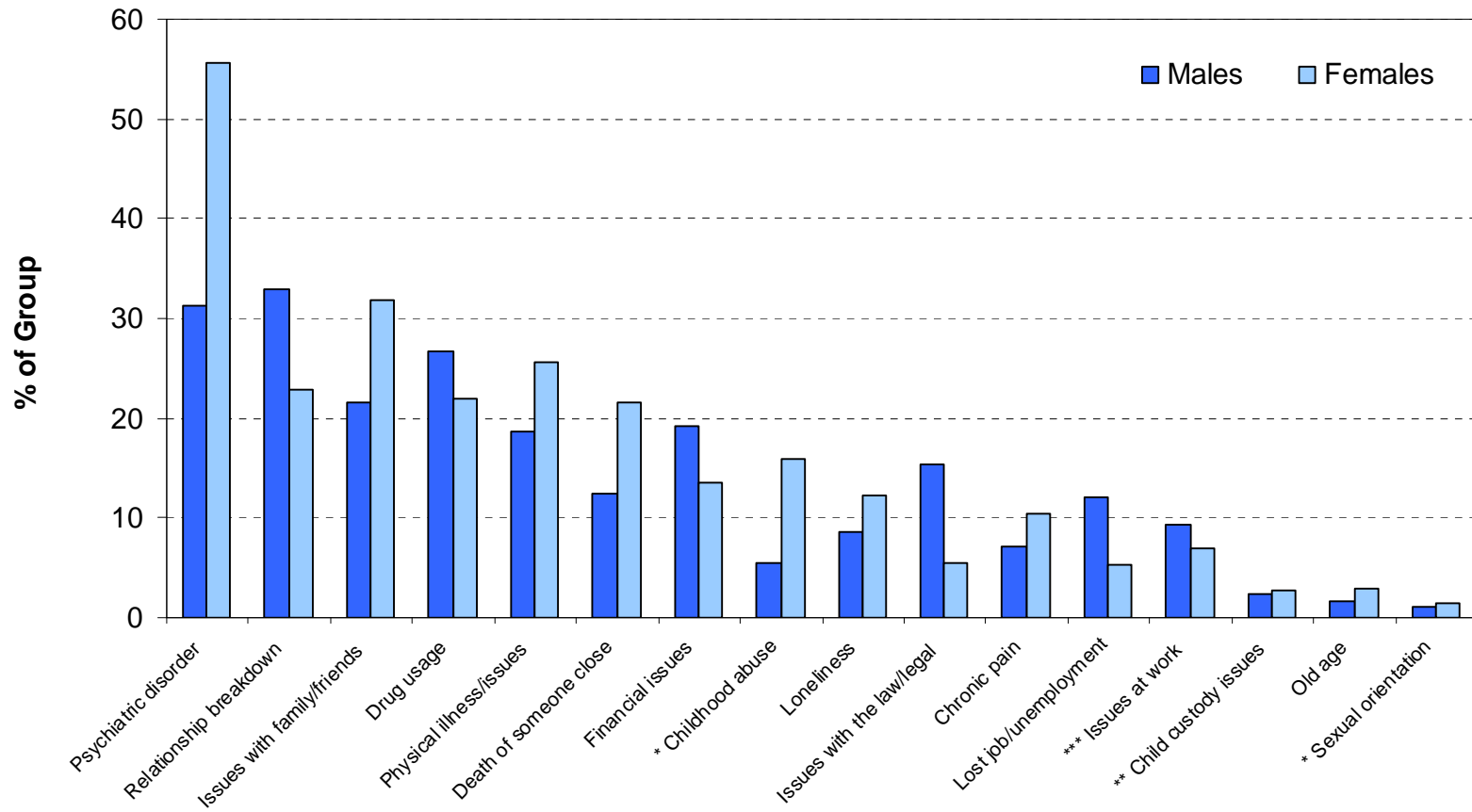


# Alcohol use as identified problem in the 3 months prior to death



# LIFE EVENTS

# Precipitating stressors amongst people who completed suicide in WA 1986-2006



# Suicide notes and prior suicidal behaviours

