

*y Australian
Institute for Suicide Research
and Prevention - at Suicide
healy on 18/5/10 - Canberra.*

ABS and QSR suicide data, Queensland, 1994-2008:

Year	Queensland				Australia
	QSR	ABS	QSR-ABS (number)	QSR-ABS (percentage)	ABS
1994	505	455	50	9.9	2258
1995	538	495	43	8.0	2368
1996	570	539	31	5.4	2393
1997	545	535	10	1.8	2720
1998	599	579	20	3.3	2683
1999	527	480	47	8.9	2492
2000	564	541	23	4.1	2363
2001	507	499	8	1.6	2454
2002	583	537	46	7.9	2320
2003	547	466	81	14.8	2213
2004	600	453	147	24.5	2098
2005	565	459	106	18.8	2101
2006	524	336	188	35.9	1799
2007	497	285	212	42.7	1880
2008	507	(revision:445)	(revision: 52)	(revision: 10.5)	(2053) 2190

Increase in number of suicide cases after ABS revision of 2007 data:

AUSTRALIA	pre-revision	post-revision	difference
Males	1453	1575	122 (8.4%)
Females	427	478	51 (11.9%)
Persons	1880	2053	173 (9.2%)

QLD	pre-revision	post-revision	difference
Males	228	340	112 (49.1%)
Females	57	105	48 (84.2%)
Persons	285	445	160 (56.1%)

NSW	pre-revision	post-revision	difference
Males	418	420	2 (0.5%)
Females	133	133	0 (0.0%)
Persons	551	533	2 (0.4%)

VIC	pre-revision	post-revision	difference
Males	334	338	4 (1.2%)
Females	104	105	1 (1/0%)
Persons	438	443	5 (1.1%)

SA	pre-revision	post-revision	difference
Males	164	164	0 (0.0%)
Females	38	38	0 (0.0%)
Persons	202	202	0 (0.0%)

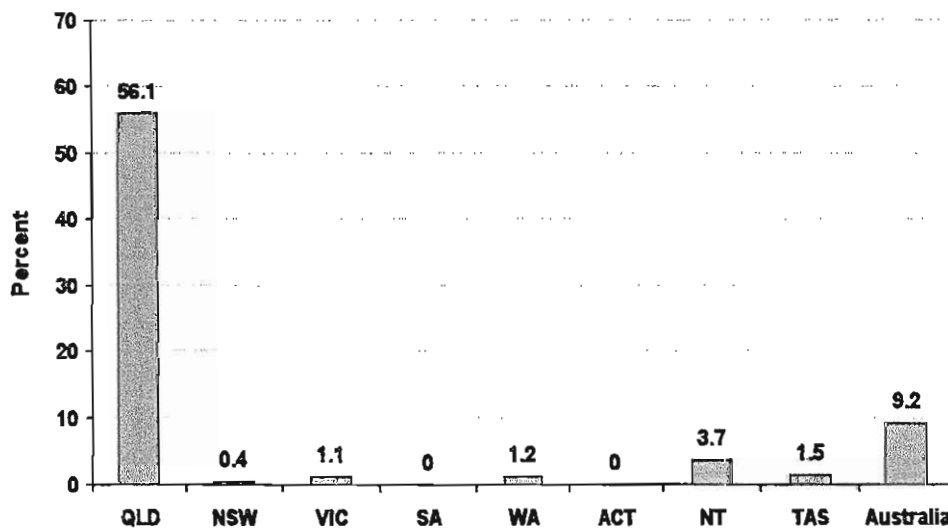
WA	pre-revision	post-revision	difference
Males	196	198	2 (1.0%)
Females	57	58	1 (1.8%)
Persons	253	256	3 (1.2%)

ACT	pre-revision	post-revision	difference
Males	21	21	0 (0.0%)
Females	10	10	0 (0.0%)
Persons	31	31	0 (0.0%)

NT	pre-revision	post-revision	difference
Males	45	46	1 (2.2%)
Females	9	10	1 (11.1%)
Persons	54	56	2 (3.7%)

TAS	pre-revision	post-revision	difference
Males	47	48	1 (2.1%)
Females	19	19	0 (0.0%)
Persons	66	67	1 (1.5%)

Increase in suicide mortality after ABS' revision of 2007 data



Sources: *Causes of death 2007* (ABS, 2009) and *Causes of death 2008* (ABS, 2010).

Increase in number of suicide deaths in QLD as a percentage of total increase in Australia:

	%
Males	91.8
Females	94.1
Persons	92.5

Changes in specific causes of death after ABS's revision of data for 2007:

Australia:

The total number of suicides increased by 173. Of those, causes of death with highest numbers (in change) were:

- 79 suicides by hanging (ICD-10 X70)
- 48 suicides by poisoning by medication, gas or poison (ICD-10 X60-X69)
- 14 suicides by firearms (ICD-10 X72-X74)
- 10 suicides by burns or fire (ICD-10 X76)
- 6 suicides by drowning (ICD-10 X71)
- 5 suicides by jumping from a high place (ICD-10 X80)
- 5 suicides by jumping or lying on front of a moving object (ICD-10 X81)

Queensland:

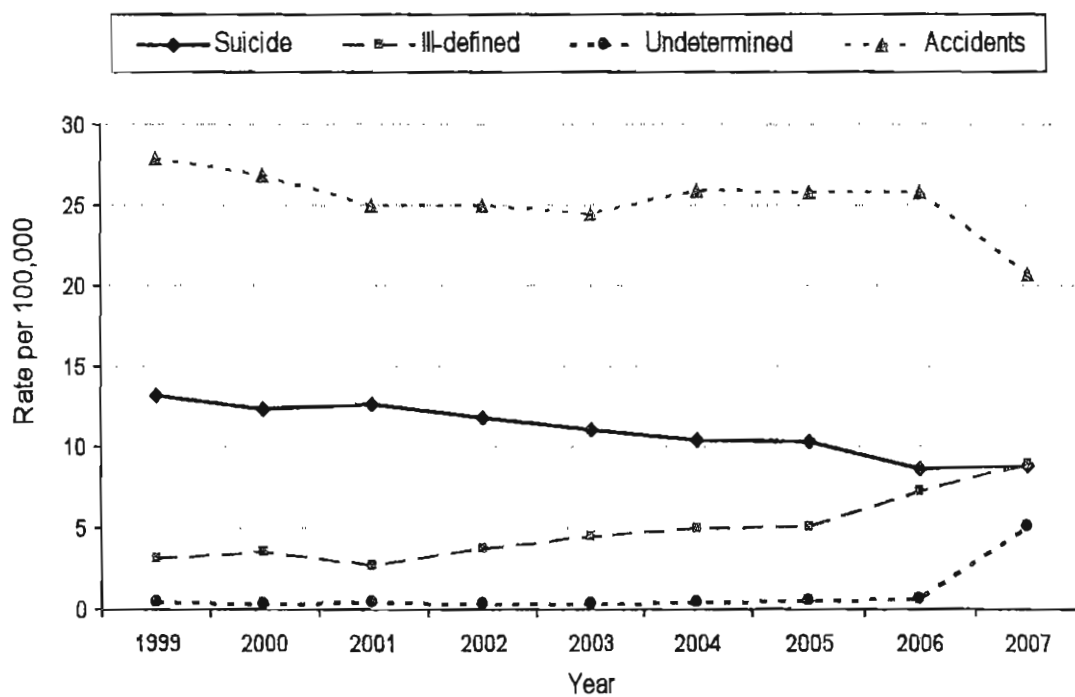
The total number of suicides increased by 160. Of those, causes of death with highest numbers (in change) were:

- 78 suicides by hanging (ICD-10 X70)
- 40 suicides by poisoning by medication, gas or poison (ICD-10 X60-X69)
- 12 suicides by firearms (ICD-10 X72-X74)
- 7 suicides by burns or fire (ICD-10 X76)
- 6 suicides by drowning (ICD-10 X71)
- 5 suicides by sharp objects (ICD-10 X78)
- 4 suicides by jumping or lying on front of a moving object (ICD-10 X81)

Mortality by selected external causes of mortality, Australia, 1990-2008

	Suicide	Ill-defined	Undetermined	Accidents
1999	2492	600	86	5287
2000	2363	682	51	5138
2001	2454	535	72	4840
2002	2320	740	65	4906
2003	2213	897	67	4865
2004	2098	1001	81	5209
2005	2101	1045	105	5267
2006	1799	1525	135	5350
2007 - before revision	1880	1895	1089	4370
2007 - after revision	2053	1419	829	4486
2008	2190	935	1162	4852

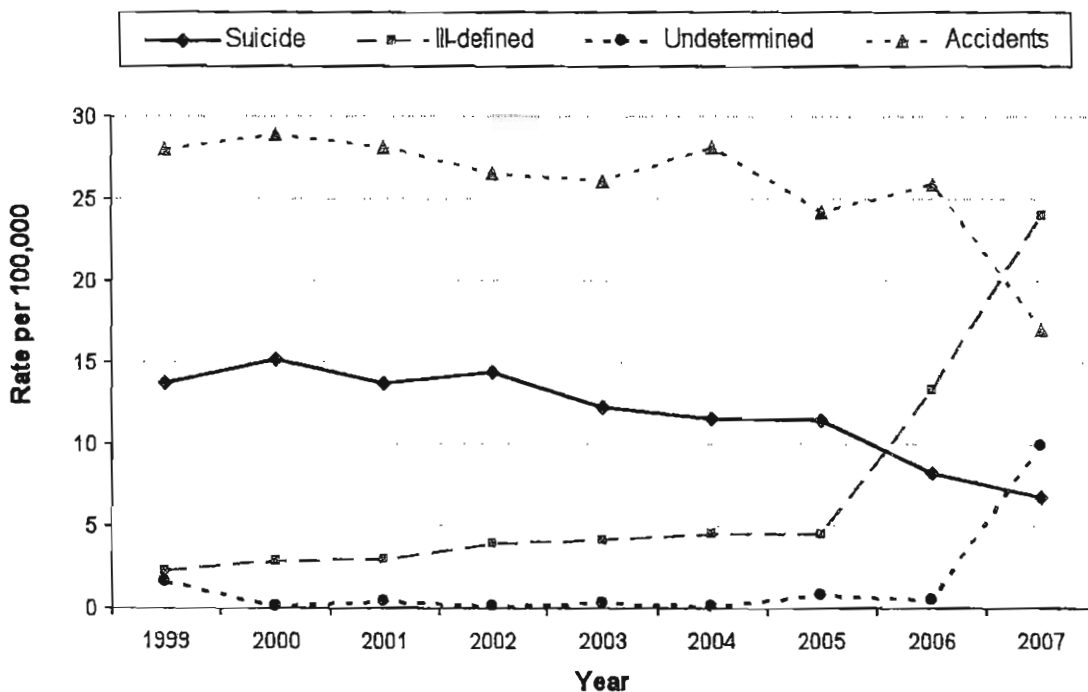
Mortality rates by selected causes of death, Australia 1999-2007



Mortality by selected external causes of mortality, Queensland, 1990-2008

	Suicide	Ill-defined	Undetermined	Accidents
1999	480	80	54	981
2000	541	103	5	1029
2001	449	106	14	1021
2002	537	144	5	988
2003	466	157	13	993
2004	453	175	2	1098
2005	459	181	33	968
2006	336	547	21	1057
2007 - before revision	285	1007	417	716
2007 - after revision	445	572	190	796
2008	507	410	206	639

Mortality rates by selected causes of death, Queensland 1999-2007



ABS's classification of deaths

Intentional self harm (X60-X84): for a case to be coded as a suicide, there must be clear evidence from a medical or legal authority regarding the self-inflicted nature of the incident and the suicidal intent.

Accident (V01-X59): when there are uncertainties about intent and circumstances surrounding the death.

Event of undetermined intent (Y10-Y34): when there is not enough evidence to distinguish between a death due to assault, homicide, accident or suicide.

Other ill-defined and unspecified causes of mortality (R99): when cases are not finalised and findings are not available to the ABS when finalising their mortality statistics.

Some general observations about the revision of 2007 cases

Ill-defined causes of death:

In 2007 (before revision), Ill-defined causes of death (R99) accounted for 1,007 deaths in Queensland. This represented 64.8% of all deaths by external causes (Chapter XX), or 3.9% of total deaths.

In Australia, 1,895 deaths in R99 accounted for 24.0% of deaths by external causes (Chapter XX) or 1.4% of total deaths.

Revision of 2007 cases has lowered the number of death by Ill-defined causes by 43.2% in Queensland and by 25.2% in Australia. Still, 572 cases remained in this category in QLD (33.5% of all deaths by external causes; 2.2% of total deaths) and 1419 in Australia (17.6% of all deaths by external causes; 1.0% of total deaths).

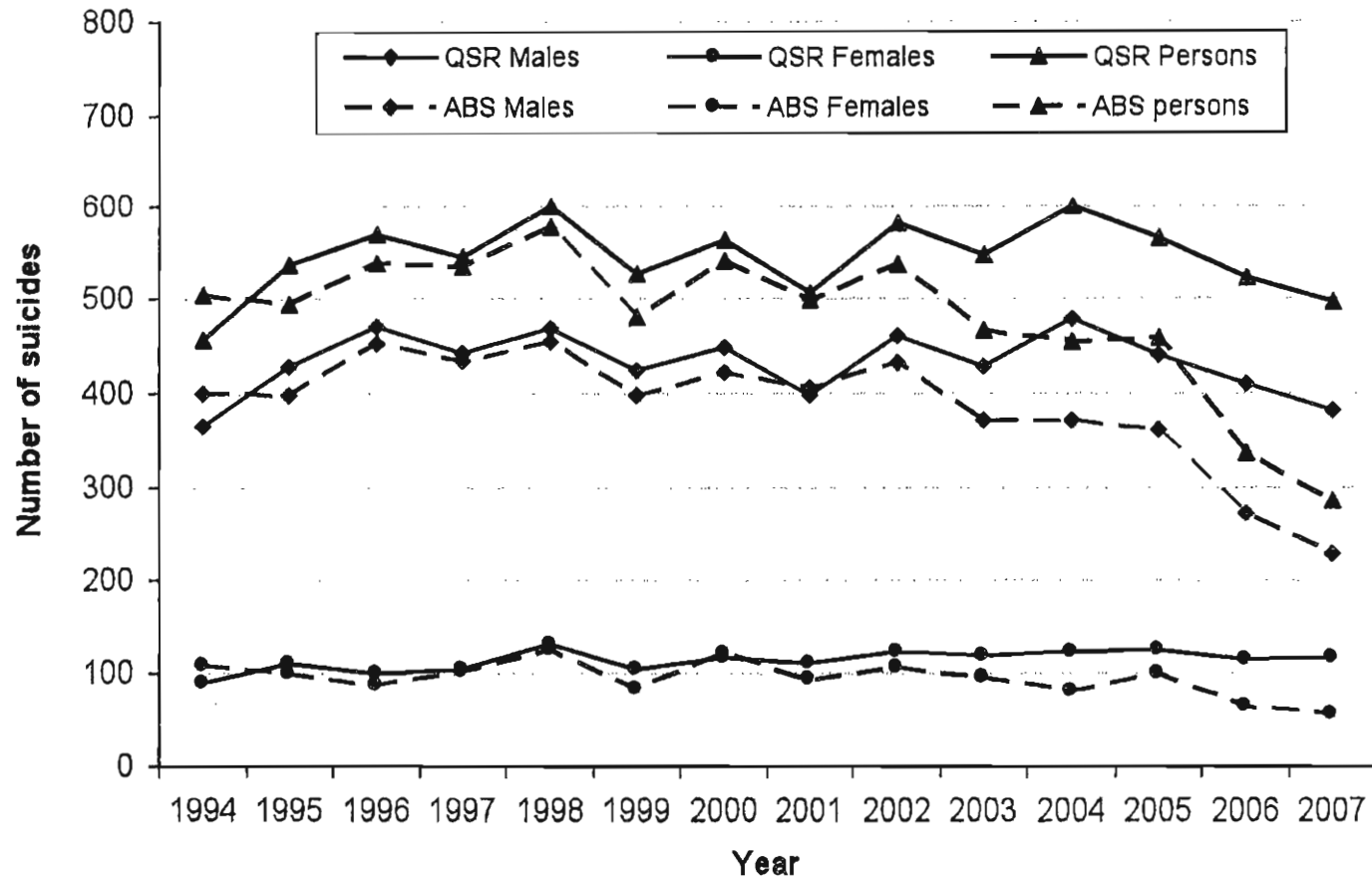
Undetermined intent:

In 2007 (before revision), deaths due to Events of undetermined intent (Y10-Y34) accounted for 417 in Queensland. This represented 26.9% of all deaths by external causes (Chapter XX), or 1.6% of total deaths.

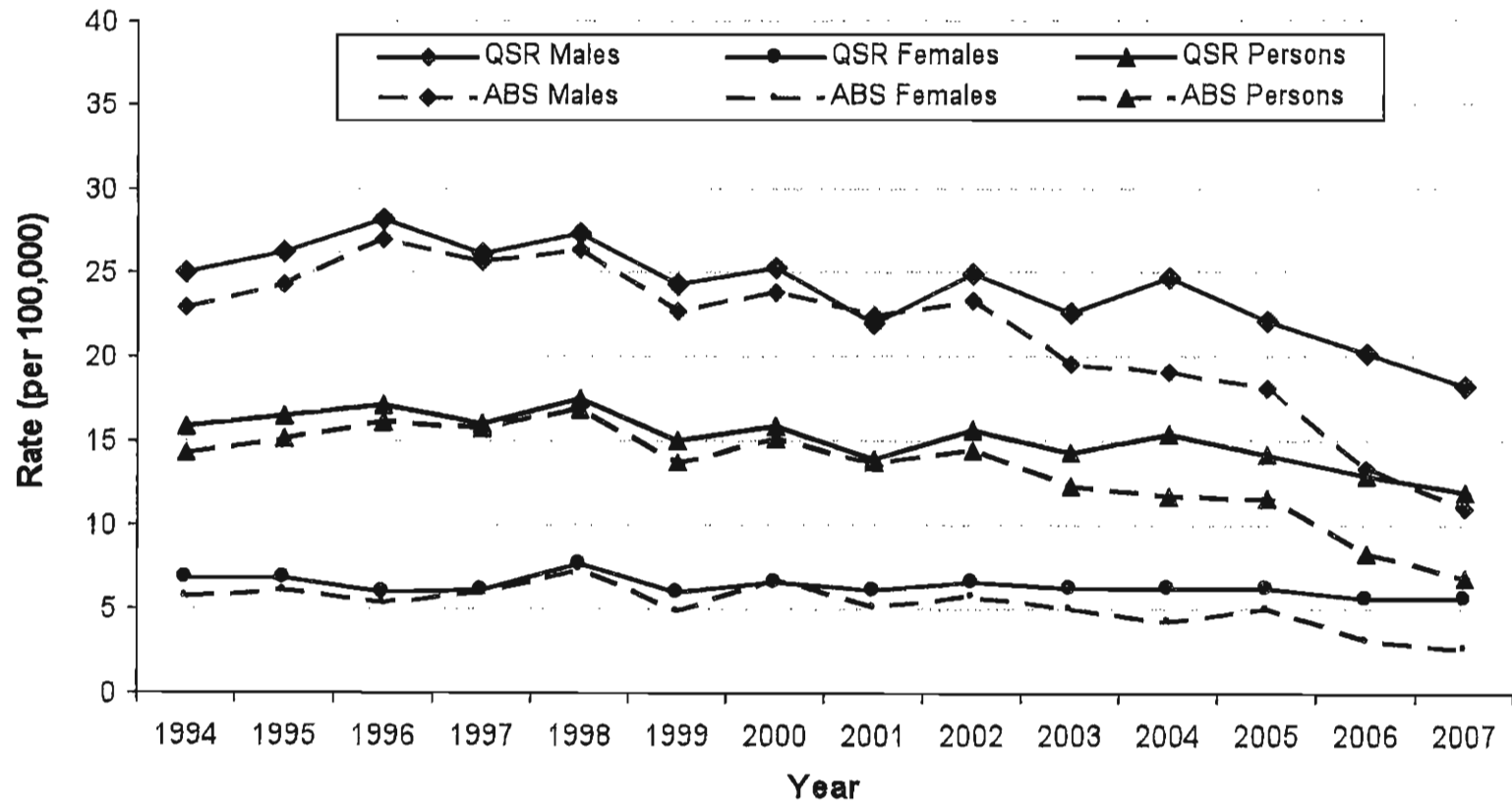
In Australia, 1,089 deaths in Y10-Y34 accounted for 13.8% of deaths by external causes (Chapter XX) or 0.8% of total deaths.

Revision of 2007 cases has lowered the number of deaths by undetermined intent by 59.6% in Queensland and by 23.9% in Australia. Still, 190 cases remained in this category in QLD (11.1% of all deaths by external causes; 0.7% of total deaths) and 829 in Australia (10.3% of all deaths by external causes; 0.6% of total deaths).

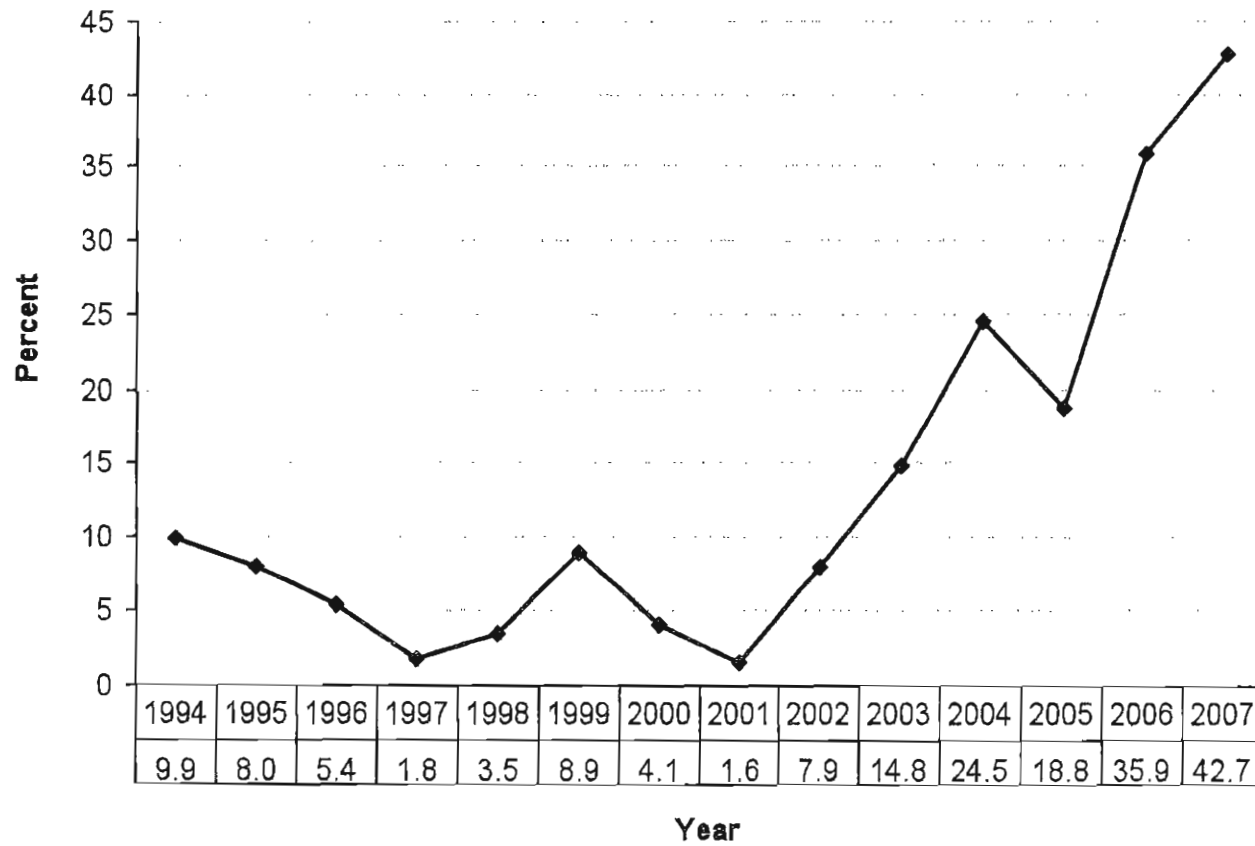
Suicide deaths in Queensland 1994-2007, comparison of ABS and QSR



Suicide rates in Queensland 1994-2007, comparison of ABS and QSR

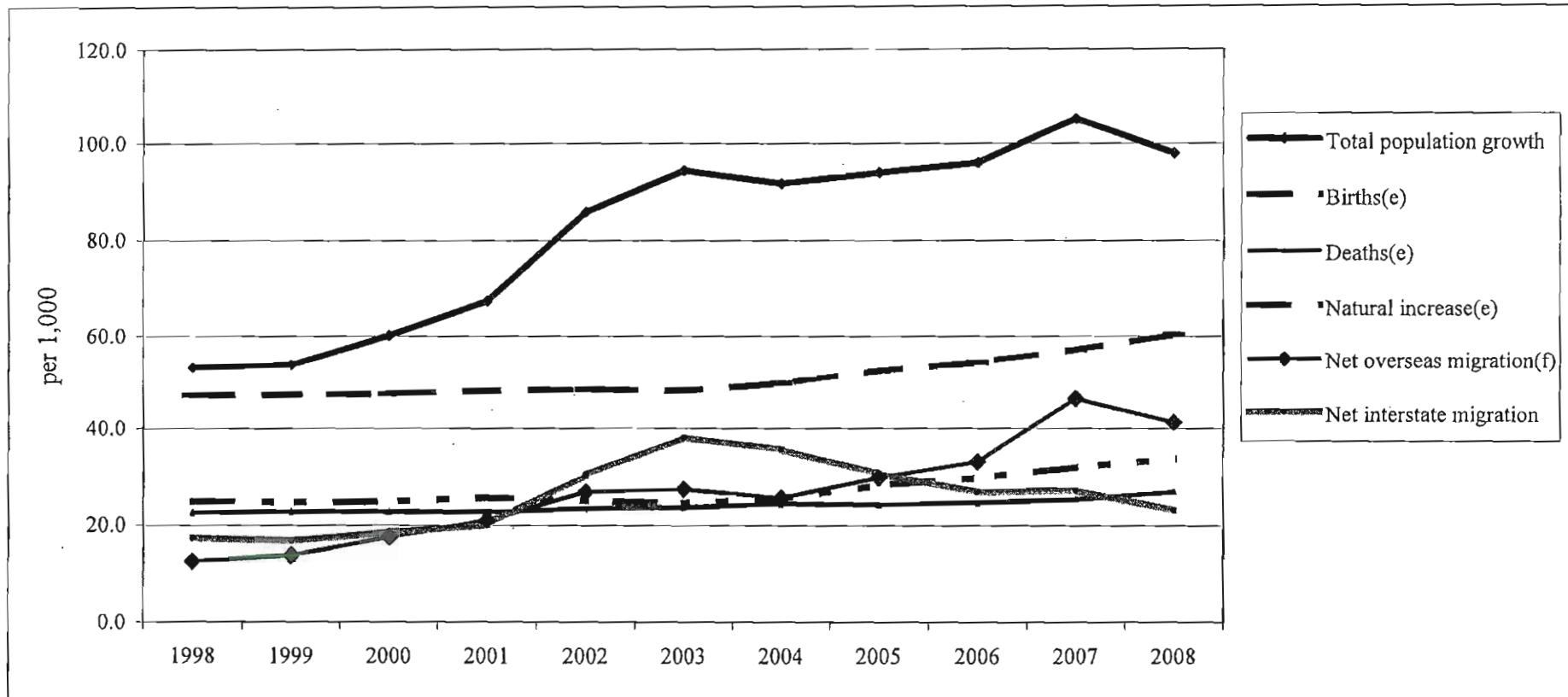


**Difference between ABS and QSR suicide incidence,
Queensland 1994-2007**

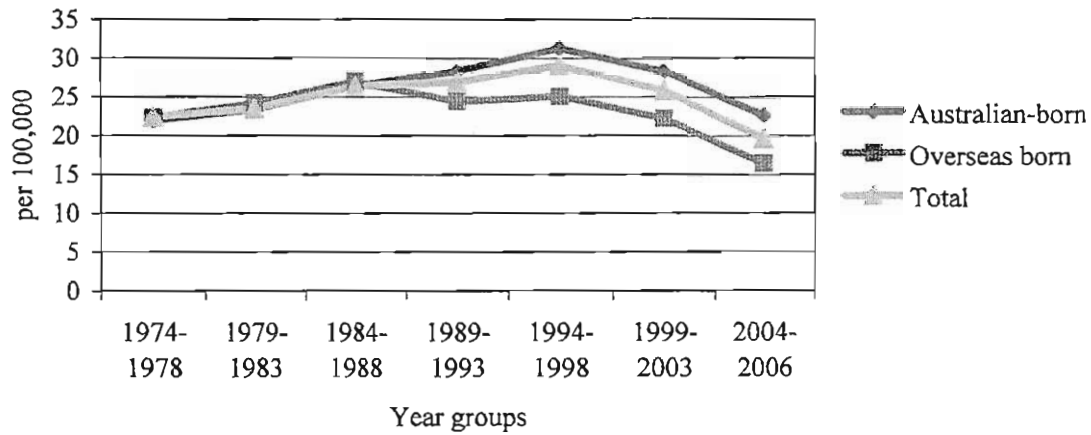


QLD

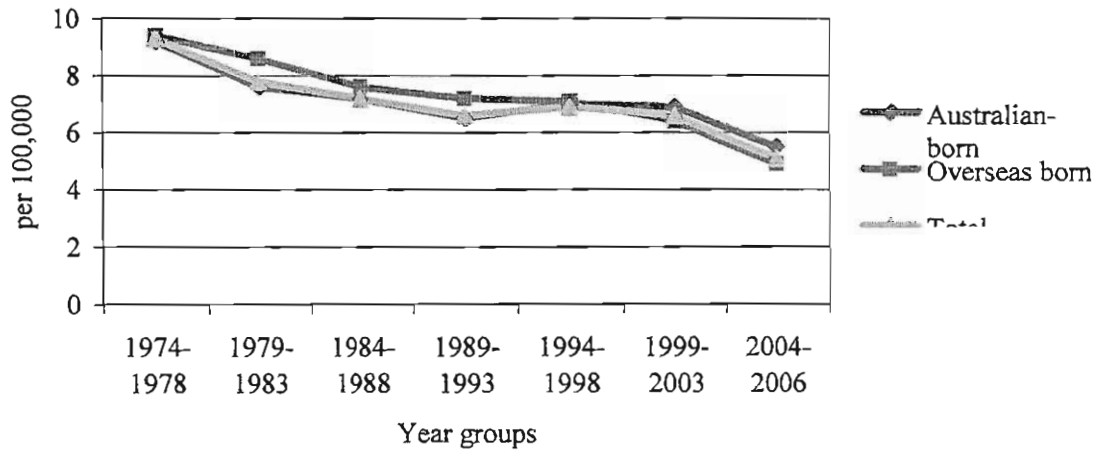
	1998	1999	2000	2001	2002	2003	2004	2005	2006	2007	2008	Units
Total population growth	53.1	53.7	60.1	67.4	r85.9	r94.4	r91.7	r93.9	r96.1	r105.1	p97.9	'000
Births(e)	47.0	47.1	47.3	47.9	r48.2	r47.9	r49.5	r52.2	r54.1	r56.9	p60.3	'000
Deaths(e)	22.4	22.6	22.7	22.6	23.3	23.6	24.2	24.2	24.5	r25.1	p26.7	'000
Natural increase(e)	24.6	24.4	24.6	25.4	r24.8	r24.3	r25.3	r28.1	r29.6	r31.8	p33.6	'000
Net overseas migration(f)	12.5	13.7	17.5	21.0	26.5	27.1	25.4	29.6	33.0	r46.3	p41.2	'000
Net interstate migration	17.4	16.7	18.5	20.0	r30.0	r38.0	r35.5	r30.4	r26.6	r27.0	p23.1	'000



Age-standardised suicide rates (15+) by COB: **Male**



Age-standardised suicide rates (15+) by COB: **Female**



Age-standardised suicide rates (15+) by COB: **Persons**

