

Commission for the Conservation of  
Southern Bluefin Tuna



みなまぐろ保存委員会

Final Editorial & Formatting Changes have yet to be made to this report

## **Report of the Sixteenth Annual Meeting of the Commission**

**20 - 23 October 2009  
Jeju Island, Republic of Korea**

## **Report of the Sixteenth Annual Meeting of the Commission**

**20-23 October 2009**

**Jeju Island, Republic of Korea**

### **Agenda Item 1. Opening of meeting**

#### *1.1 Welcoming address*

1. The Chair (Professor Ik Zhang, Republic of Korea) welcomed participants and opened the meeting.
2. The meeting approved the Chair's proposed procedure for managing the Commission and Extended Commission Meetings.

#### *1.2 Adoption of agenda*

3. The agenda was adopted and is included at **Appendix 1**.
4. The list of meeting participants is included at **Appendix 2**.

### **Agenda Item 2. Approval of decisions taken by the Extended Commission**

5. The Commission approved the decisions taken by the Extended Commission for the Sixteenth Meeting of the Commission, which is at **Appendix 3**.

### **Agenda Item 3. Election of the Chair and Vice-Chair for CCSBT 17 and venue**

6. The Chair of CCSBT 17 will be nominated by Japan.
7. The Vice Chair for CCSBT 17 will be nominated by Indonesia.

### **Agenda Item 4. Other business**

8. There was no other business

### **Agenda Item 5. Adoption of report of meeting**

9. The report was adopted.

### **Agenda Item 6. Close of meeting**

10. The meeting closed at 6:20pm, 23 October 2009.

## **List of Appendices**

### Appendix

- 1 Agenda
- 2 List of Participants
- 3 Report of the Extended Commission for the Sixteenth Annual Meeting of the Commission

Commission for the Conservation of  
Southern Bluefin Tuna



みなまぐろ保存委員会

Appendix 3

# **Report of the Extended Commission of the Sixteenth Annual Meeting of the Commission**

**20 - 23 October 2009**

**Jeju Island, Republic of Korea**

**Report of the Extended Commission of the  
Sixteenth Annual Meeting of the Commission  
20 - 23 October 2009  
Jeju Island, Republic of Korea**

**Agenda Item 1. Opening of meeting**

*1.1 Confirmation of Chair and Vice-Chair for the Extended Commission of the Sixteenth Meeting of the Commission*

1. The Chair of CCSBT 16 (Professor Chang Ik Zhang) opened the meeting.
2. Professor Chang Ik Zhang (Korea) and Mr Tzu-Yaw Tsay (Taiwan) were confirmed as the Chair and Vice Chair respectively of the Extended Commission meeting.

*1.2 Adoption of agenda*

3. The agenda was adopted and is included at **Attachment 1**.
4. Participants were introduced and the list of meeting participants is included at **Attachment 2**.
5. The list of documents submitted to the meeting is at **Attachment 3**.

*1.3 Opening statements*

*1.3.1 Members*

6. Opening statements by Members of the Extended Commission are at **Attachment 4**.

*1.3.2 Cooperating Non-Members*

7. Opening statements by Cooperating Non-Members are at **Attachment 5**.

*1.3.3 Observers*

8. Opening Statements by Observers are at **Attachment 6**.

**Agenda Item 2. Report from the Secretariat**

9. Members noted the report from the Secretariat (CCSBT-EC/0910/04), and there was agreement on the following 3 recommendations in the Secretariat's paper:
  - Future meetings of the CCSBT and its subsidiary bodies to be paperless;
  - Updating and upgrading the CCSBT website; and

- Creation of a list of long-term approved Observers to CCSBT meetings.
10. It was noted that a change to the CCSBT Rules of Procedure was required in order to achieve the last change, and the agreed changes along with the list of long-term approved Observers are included in **Attachment 7** at Annex C and Annex D respectively.

### **Agenda Item 3. Finance and Administration**

11. The Executive Secretary provided an outline of the financial matters that the meeting would need to consider, including the revised budget for 2009 (CCSBT-EC/0910/05), and the proposed budget for 2010 (CCSBT-EC/0910/06). Detailed consideration of these papers was referred to the Finance and Administration Committee (FAC).
12. The FAC was convened to consider:
- the revised budget for 2009;
  - the proposed budget for 2010; and
  - other administration issues.
13. Australia was nominated to Chair the FAC.
14. The Chair of the FAC reported on the outcome of the FAC deliberations. This included recommending a revised budget for 2009, a proposed budget for 2010, a modification to the Rules of Procedure to allow for a long-term observer status, and a list of observers that should be initially provided with this status.
15. The Extended Commission adopted the report of the FAC and all of its recommendations, including the revised budget for 2009 and the proposed budget for 2010. The report of the FAC is at **Attachment 7**.
16. Australia advised that this year's stock assessment and the Management Procedure being developed used results from the Great Australian Bight Aerial Survey. The survey costs AU\$640,000 each year and is an important component of the monitoring of the fishery. Australia requested that the survey be included in the budget of the Extended Commission and be supported by all Members.
17. The Extended Commission was not able to support funding the survey at the present time and noted that monitoring research was also conducted by Japan and that some RFMOs have setup voluntary research funds that other Members could contribute to.

### **Agenda Item 4. Review of SBT Fisheries**

18. The Meeting agreed that all relevant issues regarding SBT fisheries had been discussed by the Compliance Committee (CC) and that no further discussion was necessary.

## **Agenda Item 5. Report from the Compliance Committee**

19. The Chair of the CC presented the report of the CC which is at **Attachment 8**. The Extended Commission adopted the report and its recommendations, noting that Attachment 6 of the CC report containing a “Draft Resolution to Ensure Compliance with Conservation and Management Measures” is only a draft and needed further development by the Extended Commission before it would be considered for adoption.
20. The Extended Commission expressed its appreciation to the outgoing Chair, Mr Dave Wood, for his efforts in chairing the CC over the past 4 years.
21. Mr Stan Crothers of New Zealand was nominated and endorsed as the new Chair of the CC for the next two year term.

## **Agenda Item 6. Integrated Monitoring, Control and Surveillance (MCS) System**

22. There were no further MCS issues that needed to be discussed but the CC’s proposal to hold an intersessional working group to undertake a risk assessment for SBT fisheries including proposing potential additional resolutions on MCS was noted. It was agreed that New Zealand would coordinate the work of this group.

## **Agenda Item 7. Monitoring of Japanese wholesale markets and Australian SBT farming operations**

### ***7.1. Japanese wholesale markets***

23. Japan provided an update of their market review presented to the Extended Scientific Committee (ESC) meeting, and advised that there had been no significant changes since then. It noted that with the introduction of the CDS and associated tagging system, there would be even better systems available to monitor the markets.
24. The Meeting noted that issues surrounding the Japanese market reviews had been considered by the Extended Scientific Committee.

### ***7.2. Australian SBT farming operations***

25. Australia provided an update of its SBT farming operations, noted that this was presented to the ESC meeting and advised that there had been no significant changes since then.

## **Agenda Item 8. Recreational fisheries**

26. The Extended Commission noted that New Zealand had provided recreational catch estimates.

27. In response to questioning, Australia advised that it had not yet provided recreational catch estimates for 2008 as these were not yet available due to a delay in analyses and finalisation of the survey data by the relevant Australian jurisdictions. The survey report would be available soon

#### **Agenda Item 9. Report of the Ecologically Related Species Working Group**

28. The Chair of the Ecologically Related Species Working Group (ERSWG) presented the report of the ERSWG (**Attachment 9**), noting that the ERSWG was unable to provide estimates of total mortality of bycatch species but had provided a table of initial observed interactions, and made progress towards other ERS related measures.
29. After some discussion on the timeframe for meetings of the ERSWG, the Extended Commission agreed that the next meeting of the ERSWG would be held no later than the first half of 2012.
30. The Meeting noted that in order to continue monitoring the implementation of ERS mitigation measures, the CC could consider such matters prior to the next ERSWG.
31. Members welcomed progress made by the Secretariat in developing a relationship with CCAMLR, including preparation of a proposed Arrangement between the two organisations. Following the Kobe II meeting of all five tuna RFMOs, Members agreed that the Secretariat should be asked to continue discussions with the CCAMLR secretariat and to initiate similar discussions with the Secretariats of the IOTC, WCPFC and ICCAT, with a view to developing arrangements that include provisions to avoid duplication, especially with respect to the conservation of ecologically related species.
32. Members further agreed that they would report the extent of compliance with such measures to the CC as well as to the relevant other organisation or organisations.
33. The Meeting agreed that Members should be encouraged to annually assess ERS impact, and report to the next ERSWG, noting that steps to mitigate and reduce the impact were also necessary.
34. The Meeting further agreed that Members should include in their National Reports, a table of observed ERS interactions including mortalities, and methods of scaling to produce estimates of total mortality, in the same format as presented in Attachment 4 of the ERSWG8 Report.
35. With these amendments the Extended Commission adopted the report of the ERSWG at **Attachment 9**.

#### **Agenda Item 10. Report from the Extended Scientific Committee**

36. The Chair of the ESC presented the report of the ESC which is at **Attachment 10**.



37. There was an extensive question and answer session relating to issues arising from the report of the ESC, noting that its primary recommendation was to effect a meaningful reduction in TAC.
38. It was agreed that the stock status summary at Attachment 13 of the ESC report would remain confidential, and that the public version of the ESC report would not contain this attachment. A revised version of the stock status summary for provision to FAO and relevant RFMOs is provided at **Attachment 11**.
39. With the above provision, the Extended Commission adopted the report of the ESC.

**Agenda Item 11. Report from the Strategy and Fisheries Management Working Group**

40. The Chair of the Strategy and Fisheries Management Working Group (SFMWG) presented the report of the SFMWG, which is at **Attachment 12**. The Extended Commission adopted the report.
41. New Zealand presented a Draft Strategic Plan, as provided to the CC in paper CCSBT-CC/0910/10, and advised that the strategic plan should become a key future document in providing direction to the Commission.
42. The Meeting thanked New Zealand for its extensive work on the plan, and noted that it covered a broad range of issues in a balanced way. The Meeting agreed that further development and consideration of the draft strategic plan would be conducted by the next meeting of the SFMWG.

**Agenda Item 12. Report from the Second Joint Meeting of Tuna RFMOs and Course of Actions**

43. The Executive Secretary presented paper CCSBT-EC/0910/15 which considered the report from the Second Joint Meeting of Tuna RFMOs (Kobe2) and the Course of Actions arising from that meeting, noting that the report contained 10 proposals for immediate action, and 4 workshops to be scheduled during 2010. The Executive Secretary advised that the third Joint Meeting of Tuna RFMOs was planned for 2011.
44. Members agreed that the Kobe process is very important to work toward improving harmonisation across all tuna RFMOs, and recommended that the Secretariat continue its involvement with the other RFMOs, in particular to streamline processes and reduce the overlap in the tasks performed by those bodies.

### **Agenda Item 13. Total Allowable Catch and its allocation**

#### ***13.1 TAC determination and Allocation***

45. The Meeting agreed that the status of the SBT stock is at a critical stage, and that in following advice from the Extended Scientific Committee, a meaningful reduction in TAC is necessary in order to recover the stock and work toward reaching an interim rebuilding target reference point of 20 percent of the original spawning stock as agreed by the SFMWG in 2009.
46. The European Community advised the Extended Commission that it was seeking consideration of the Commission for an increase to its national allocation of the TAC, noting that its SBT catch was a small “unavoidable” bycatch of its fisheries. It advised that it followed very strict management measures, and complied with the Conservation measures of other RFMOs, as well as CCSBT. The European Community noted that even with an overall reduction in TAC, an increase in its national allocation would represent a negligible proportion of the TAC.
47. South Africa advised that it was considering joining the CCSBT as a full Member, and it hoped to receive a more equitable national allocation, noting that it was a responsible fishing nation, with stringent management and control measures.
48. Indonesia advised that it was considering requesting an increase to its national allocation, noting that the current allocation was provided based on scientific advice prior to Indonesia becoming a Member of the CCSBT. The request was recorded in the Report of the SFMWG meeting. Indonesia further noted that since becoming a Member, its monitoring and the level of data on SBT fisheries continues to improve, enabling a more efficient management of its fishery.
49. The Extended Commission agreed to a “Resolution on the Total Allowable Catch and Future management of Southern Bluefin Tuna”, which is provided at **Attachment 13**. The Extended Commission also decided, as part of interim management measures, to adopt a TAC based on binding allocated catch limits for 2010 – 2011 as follows:

	Nominal catch (tonnes)	Allocated catch (tonnes)	Effective catch limit
Japan	5665	2261 (2010 – 2011)	2261 (2010 – 2011)
Australia	5665	4270 (2010 – 2011)	4015 (2010 – 2011)
New Zealand	1000	754 (2010 – 2011)	709 (2010 – 2011)
Korea	1140	859 (2010 – 2011)	859 (2010 – 2011)
Taiwan	1140	859 (2010 – 2011)	859 (2010 – 2011)
Indonesia	750	651 (2010 – 2011)	651 (2010 – 2011)

50. The Extended Commission agreed that each Member shall be bound to the allocation in column three above.

51. Furthermore, to contribute to the rebuilding of the SBT stock, Australia and New Zealand will make additional annual voluntary reductions of 255t and 45t respectively for 2010 and 2011, as outlined in the effective catch limit (column 4) of the above table.
52. The Extended Commission also agreed, for the purposes of paragraph 2(b) of Article 11 of the CCSBT Convention, that the budget shall be divided in proportion to the nominal catch in column two above.
53. The Extended Commission agreed on interim catch allocations for Cooperating Non Members for 2010, as follows:

	Allocated catch (tonnes)
The Philippines	45
South Africa	40
European Community	10

54. The Extended Commission also agreed to start discussion from 2010 Extended Commission meeting on quota allocation rules which may be used from 2012 allocations.
55. When deciding the quota allocation for 2012 and beyond, the report of the ESC shall be fully considered.
56. South Africa and the European Community expressed concern at the TAC decision, noting that this represented a significantly lesser reduction than was required to recover the stock status. They felt that the agreed TAC would not in all likelihood lead to an overall improvement in stocks of SBT.
57. Regarding the status quo of the allocations of Cooperating Non-Members, both South Africa and the European Community expressed their disappointment that requests for increases in their national allocations had not been considered and requested greater transparency in future deliberations of TAC and allocation thereof.
58. South Africa objected to its allocation and provided a statement of its position relating to its request for an increase in allocation, which is at **Attachment 14**.
59. The European Community noted with concern that its request for a small increase in TAC of only 5-10t had not been agreed for the second time. It further noted that it was a responsible fishing nation, adhering to all conservation measures of other relevant RFMOs.
60. WWF expressed concern in relation to ERS measures and noted that even assuming 100% compliance with existing measures, there is likely to still be a large number of seabird mortalities, which would be unsustainable in the long term. It requested that the Extended Commission put measures into place to mitigate seabird bycatch with some urgency.
61. The Meeting adopted a “Resolution on Action Plans to Ensure Compliance with Conservation and Management Measures”, which is at **Attachment 15**.

62. The Extended Commission agreed to task the Executive Secretary with developing draft rules and other necessary arrangements for the exchange of confidential data drawing on precedence from other RFMOs, as relevant for consideration by the ESC and the CC at their 2010 meetings. The EC will consider draft rules at its 2010 annual meeting for the provision of data during 2011 and thereafter.

### ***13.2 Research Mortality Allowance***

63. The Extended Commission considered paper CCSBT-CC/0910/16 and approved Japan's request of 1t of RMA for trolling surveys in Western Australia and Australia's request for 10t of RMA for electronic and genetic tagging of SBT by Australia.

### **Agenda Item 14. Cooperating Non-Members**

64. The Executive Secretary presented CCSBT-EC/0910/17, detailing the performance of Cooperating Non-Members (CNMs), advising that two of the CNMs had exceeded their National Allocation in 2008 by small amounts. He noted that the European Community continued to have difficulty in complying with CCSBT's Monthly Catch Reporting requirements, but that it had improved its compliance with the Trade Information Scheme.
65. South Africa advised that in response to its overcatch in both 2007 and 2008, it had closed its SBT fishery each year, and that the SBT fishery was very difficult to manage due to a relatively low National Allocation of 40t, and the fact that the average weight of SBT in the South African fishery is quite high. It further advised that it was seeking an increase in its National Allocation.
66. The European Community advised that its SBT fishery is a bycatch fishery, and it unfortunately cannot comply with some CCSBT measures in the same way as CCSBT Members because SBT is not the target species. It noted that it has made progress in reducing bycatch in recent years, but felt that it could not be reduced further, and that it would be requesting an increase in its national allocation. The European Community further noted that even if the Extended Commission were to effect an overall reduction in TAC, the increase it was requesting was still a relatively negligible amount of the TAC.
67. The European Community advised that it would soon be launching a formal application process to seek full membership of CCSBT, and that this would address requests made at CCSBT15 by some Members. The Chair welcomed the European Community's application.
68. The Chair noted that due to a severe Typhoon, the Philippines had been unable to attend the meeting.
69. The Extended Commission endorsed the continuing Cooperating Non-Member status of the Philippines, South Africa and the European Community.

### **Agenda Item 15. Relationship with Non-Members**

70. It was noted that the Secretariat would write to China and the United States of America, seeking cooperation with the Catch Documentation Scheme.

### **Agenda Item 16. Activities with other organisations**

#### ***16.1 Relationship with CCAMLR***

71. The Executive Secretary presented CCSBT-EC/0910/19 which provided an update on intersessional progress on the relationship with The Commission for Conservation of Antarctic Marine Living Resources (CCAMLR), and with other organisations. This paper included a draft arrangement between CCSBT and CCAMLR.
72. The Meeting noted that the relationship with CCAMLR had been a long standing issue that had been underway since 2005, and reaffirmed its commitment to formalising an arrangement between the two organisations.
73. After some discussion on the content of the draft arrangement, the Extended Commission agreed that further revision of the arrangement would take place intersessionally, with a view to formalising this as soon as practicable.

### **Agenda Item 17. Governance – Role of Chair and Commissioners**

74. The Chair advised that at CCSBT15 there was consideration of appointing a Chair and Vice-Chair of the Commission for a 2 year period, with a possibility of re-appointment for a further 2 years.

The Extended Commission agreed to defer a decision on this item until CCSBT17.

### **Agenda Item 18. Program of work for 2010**

75. The Extended Commission agreed that a meeting of the Strategy and Fisheries Management Working Group would be hosted and Chaired by Japan in April 2010. The meeting will further develop the draft strategic plan (**Attachment 16**), SBT rebuilding strategy and provide input to the Management Procedure as requested by the Extended Scientific Committee.
76. The workplan of the Extended Scientific Committee was endorsed, including evaluation and further specification an emergency rule. A New Zealand draft workplan (**Attachment 17**) was used as the basis for indicative timing of meetings.

### **Agenda Item 19. Confidentiality of Commission Documents**

77. The Extended Commission noted that with exception of Attachment A of paper CCSBT-ESC/0909/04, papers CCSBT-CC/0909/41 and CCSBT-CC/0910/BGD01, and Attachment 13 of the report of SC14, the reports of meetings and documents submitted to the meetings under the jurisdiction of CCSBT 16 would be made publicly available.
78. A request was made by one Member to revisit the issue of confidentiality of documents CCSBT-ESC/0909/04, papers CCSBT-CC/0909/41 and CCSBT-CC/0910/BGD01 and to have full discussion of the confidentiality of these documents in the 2010.

### **Agenda Item 20. Other business**

79. The Draft Strategic Plan developed by New Zealand for the Extended Commission is provided at **Attachment 16**. The plan has yet to be adopted, but will be considered at the Strategy and Fisheries Management Working Group Meeting in April 2010.
80. The Meeting agreed that Japan's proposed Draft Resolution on an Emergency Rule had not been discussed, but would be included at **Attachment 18**.

### **Agenda Item 21. Close of meeting**

#### ***21.1 Election of Chair and Vice-Chair for the Extended Commission of the 16th Annual Meeting of the CCSBT***

81. The Extended Commission agreed that the Chair and Vice Chair for its 2010 meeting would be nominated by Taiwan and Indonesia respectively.

#### ***21.2 Dates and timing for the meetings in 2010***

82. It was agreed that the Fifth Meeting of the Compliance Committee will be held in Taiwan from 9 to 10 October 2010 and that the 2010 meeting of the Extended Commission would be held in Taiwan from 11 to 14 October 2009.

#### ***21.3 Adoption of report***

83. The report was adopted.

#### ***21.4 Close of meeting***

84. The Meeting closed at 6:08pm, 23 October 2009.

## **List of Attachments**

### Attachment

- 1 Agenda
- 2 List of Participants
- 3 List of Documents
- 4 Opening Statements by Members
- 5 Opening Statements by Cooperating Non-Members
- 6 Opening Statements by Observers
- 7 Report of the Finance and Administration Committee
- 8 Report of the Fourth Meeting of the Compliance Committee
- 9 Report of the Eighth Meeting of the Ecologically Related Species Working Group
- 10 Report of the Fourteenth Meeting of the Scientific Committee
- 11 Stock status summary report for provision to FAO and relevant RFMOs
- 12 Report of the Strategy and Fisheries Management Working Group Meeting
- 13 Resolution on the Total Allowable Catch and Future management of Southern Bluefin Tuna
- 14 South Africa's Intervention pertaining to its allocation of SBT quota
- 15 Resolution on action plans to ensure compliance with Conservation and Management Measures
- 16 Draft Strategic Plan for CCSBT 17
- 17 Draft Workplan
- 18 Draft Resolution Emergency Rule

**Agenda**  
**Extended Commission of the Sixteenth Annual Meeting of the Commission**

**20-23 October 2009**  
**Jeju Island, Republic of Korea**

1. Opening of the Meeting
  - 1.1. Confirmation of Chair and Vice-Chair for the Extended Commission of the Sixteenth Meeting of the Commission
  - 1.2. Adoption of Agenda
  - 1.3. Opening Statements
    - 1.3.1. Members
    - 1.3.2. Cooperating Non-members
2. Report from the Secretariat
3. Finance and Administration
  - 3.1. Report from the Finance and Administration Committee
  - 3.2. Discussion on Finance Issues and adoption of budget
4. Review of SBT Fisheries
5. Report from the Compliance Committee
6. Integrated Monitoring, Control and Surveillance System
7. Monitoring of Japanese wholesale markets and Australian SBT farming operations
  - 7.1. Japanese wholesale markets
  - 7.2. Australian SBT farming operations
8. Recreational Fisheries
9. Report of the Ecologically Related Species Working Group
10. Report from the Extended Scientific Committee
11. Report from the Strategy and Fisheries Management Working Group
12. Report from the Second Joint Meeting of Tuna RFMOs and Course of Actions
13. Total Allowable Catch and its Allocation
  - 13.1 TAC determination
  - 13.2 Research Mortality Allowance
  - 13.3 Allocation of TAC
14. Cooperating Non-Members



15. Relationship with Non-members
16. Activities with Other Organisations
  - 16.1. Relationship with CCAML
  - 16.2. Others
17. Governance – Role of Chair and Commissioners
18. Program of Work for 2010
19. Confidentiality of Commission Documents
20. Other Business
21. Close of Meeting
  - 21.1. Election of Chair and Vice-Chair for the Extended Commission of the 17<sup>th</sup> Annual Meeting of the CCSBT
  - 21.2. Dates and timing for the meetings in 2010
  - 21.3. Adoption of report
  - 21.4. Close of meeting

**List of Participants**  
**Extended Commission of the Sixteen the Annual Meeting of Commission**

**CHAIR**

Professor Chang Ik Zhang  
Department of Marine Production Management  
College of Fisheries Sciences  
Pukyong National University  
Daeyeon 3-dong, Nam-gu,  
Busan  
Phone: +82 51 629 5892  
Fax: +82 51 629 5886  
Email: cizhang@pknu.ac.kr

Ms Anna WILLOCK  
International Fisheries  
Dept. of Agriculture, Fisheries & Forestry  
GPO Box 858  
Canberra ACT 2601  
Phone: +61 (0)2 6272 5561  
Fax: +61 (0)2 6272 5089  
Email: Anna.Willock@daff.gov.au

**COMPLIANCE COMMITTEE CHAIR**

Mr David WOOD  
NEW ZEALAND  
Email: dave.wood@xtra.co.nz

Dr Gavin BEGG  
Fisheries & Marine Science Program  
Bureau of Rural Science  
GPO Box 858  
Canberra ACT 2601  
Phone: +61 (0)2 6272 4277  
Fax: +61 (0)2 6272 3882  
Email: Gavin.Begg@brs.gov.au

**SCIENTIFIC COMMITTEE CHAIR**

Dr John ANNALA  
Chief Scientific Officer  
Gulf of Marine Research Institute  
350 Commercial Street Portland, Marine 04101  
USA  
Phone: +1 207 772 2321  
Fax: +1 207 772 6855  
Email: jannala@gmri.org

Mr Paul MURPHY  
General Manager, Operations  
Australia Fisheries Management Authority  
PO Box 7051  
Canberra Mail Centre ACT 2610  
Phone: +61 (0)2 6225 5536  
Email: Paul.Murphy@afma.gov.au

**AUSTRALIA**

Dr John KALISH  
HEAD OF DELEGATION – AUSTRALIA  
Bureau of Rural Sciences  
GPO Box 858  
Canberra ACT 2601  
Phone: +61 (0)2 6272 4045  
Fax: +61 (0)2 6272 3882  
Email: John.Kalish@brs.gov.au

Ms Karina McLACHLAN  
Assistant Director, Marine Policy Development Section  
Department of the Environment, Water, Heritage and  
the Arts  
GPO Box 787  
Canberra ACT 2601  
Phone: +61 (0)2 6274 2800  
Email: Karina.Mclachlan@environment.gov.au

Mr Nigel ROUTH  
Assistant Secretary, Marine Biodiversity Policy Branch  
Department of the Environment, Water, Heritage and  
the Arts  
GPO Box 787  
Canberra ACT 2601  
Phone:+61 (0)2 6274 2531  
Email: Nigel.Routh@environment.gov.au

Mr Andrew WILKINSON  
General Manager  
Tony's Tuna International P/L  
Pine Freezer Rd  
Port Lincoln 5606 SA  
Phone:+61 (0)8 8682 2266  
Fax: +61(0)8 8683 0646  
Email: andrew@tonystuna.com.au

Ms Robyn FROST  
Principal Legal Officer  
Office of International Law  
Attorney-General's Department  
Central Office Robert Garran Offices  
National Circuit BARTON ACT 2600  
Phone:+61 (0)2 6141 3394  
Fax: +61 (0)2 6141 3486  
Email: Robyn.Frost@ag.gov.au

Mr Terry ROMARO (OAM)  
Managing Director  
Ship Agencies Australia  
PO Box 1093  
Fremantle WA 6959  
Phone:+61 (0)8 9335 5499  
Fax: +61 (0)8 9335 5045  
Email: terry@romaro.name

Mr Ben PLAYLE  
Director, Sea Law, Environment Law and Antarctic  
Law Sections  
Department of Foreign Affairs and Trade  
RG Casey Building  
Jogn McEwen Crescent  
Barton ACT 2600  
Phone: +61 (0)2 6261 3718  
Fax: +61 (0)2 6261 2144  
Email: ben.playle@dfat.gov.au

Mr Yong Man KIM  
Ship Agencies Australia  
PO Box 1093  
Fremantle WA 6959  
Phone:+61 (0)2 9789 3577  
Fax: +61 (0)8 9335 5045  
Email: kimsan@saa.com.au

Ms Megan Watson  
First Secretary, Trade and Economic  
Australian Embassy  
2-1-14 Mita  
Minabo-ku  
Tokyo 108-8361  
Phone: +81 3 5232 4161  
Fax: +81 3 5232 4140  
Email: megan.watson@dfat.gov.au

Mr Ben HUR  
Managing Director  
Dae Young Fisheries P/L  
Suite 9, 240 Longueville Road, Lane Cove,  
NSW, 2066  
Phone:+61 (0)2 9420 4002  
Fax: +61 (0)2 9420 3834  
Email: daeyoung@bigpond.net.au

Mr Brian JEFFRIESS  
CEO  
Australian SBT Industry Association  
PO Box 416  
Fullarton. SA 5063  
Phone: + 61 (0)419840299  
Fax: +61 (0)883732508  
Email: austuna@bigpond.com

Mr Rick KOLEGA  
Managing Director  
Sekol Farmed Tuna P/L  
PO Box 1870  
Port Lincoln SA 5606  
Phone:+61 (0)8 8682 1766  
Email: finak@bigpond.com

Mr Michael THOMAS  
Director  
Markwell Risk Management Services  
PO Box 53  
Kent Town SA 5071  
Phone:+61 (0)8 8338 3288  
Fax: +61 (0)8 9476 6342  
Email: Michael.Thomas@saringroup.com.au

Mr Wenjung HSIEH  
Honor Chair of IOOC  
Taiwan Tuna Association  
3F-2,NO.2,  
Yu Kang Middle 1<sup>Street</sup>RD,Kaohsiung  
Taiwan,R.O.C  
Phone: +886-7-8312151  
Email: siunion.fishery@msa.hinet.net

## FISHING ENTITY OF TAIWAN

Ms Shiuling LIN  
Chief  
Fisheries Agency  
70-1,Sec.1,Jinshan S.Rd.Taipei  
Phone:+886-2-3343-6045  
Fax:+886-2-3343-6128  
Email:Shiuling@msl.f.gov.tw

Mr Kuanting LEE  
Secretary  
Taiwan Tuna Association  
3F-2,NO.2,  
Yu Kang Middle 1<sup>Street</sup>RD,Kaohsiung  
Taiwan,R.O.C  
Phone: +886-7-8419606  
Email: simon@tuna.org.tw

## INDONESIA

Mr Chishing HUANG  
Specialist  
Fisheries Agency  
70-1,Sec.1,Jinshan S.Rd.Taipei,Taiwan,R.O.C  
Phone:+886-2-07823-9835  
Fax:+886-2-07-8157078  
Email:Chishing@msl.f.gov.tw

Mr Agus A.BUDHIMAN  
Director for Fisheries Resources Management  
DG Capture Fisheries, Ministry of Marine Affairs and  
Fisheries, Indonesia  
Jalan Harsono R.M. No.3 Gedung B Ragunan Ps.  
Minggu Jakarta 12550  
Phone:+6221-7811672  
Fax: +6221-7811672  
Email: budhiman@indosat.net.id

Ms Yichi HUANG  
Specialist  
Ministry of Foreign Affairs, Republic of China  
(Taiwan)  
Kaitakelan Blvd. Taipei, 10048,  
Taiwan,R.O.C.  
Phone:+886-2-2348-2528  
Email: ychuang@mofa.gov.tw

Ms Erni WIDJAJANTI  
Deputy Director for Utilization of Fishery at IEEZ and  
High Seas Resource  
DG Capture Fisheries, Ministry of Marine Affairs and  
Fisheries, Indonesia  
Jalan Harsono R.M. No.3 Gedung B Ragunan Ps.  
Minggu Jakarta 12550  
Phone:+6221-7811672  
Fax: +6221-7811672  
Email: sdi.djpt@yahoo.com  
erwijaya@yahoo.com

Mr Sanmin HONG  
Secretary  
OFDC  
19,Lane 113,Roosevelt Road, Sec.4  
Taiwan,R.O.C  
Phone: +886-2-27381522 Ext 139  
Email: allen@ofdc.org.tw

Mr. Mahrus AHYADI  
Staff of Directorate General of Capture Fisheries  
Ministry of Marine Affairs and Fisheries  
Jl. Medan Merdeka Timur No. 16 Jakarta 10110  
Phone:+62 21 3519070  
Email: kln\_djpt@yahoo.com

Dr Purwito MARTOSUBROTO  
Indonesia Tuna Committee  
Ministry of Marine Affairs and Fisheries  
Jl.Palapa XVIII/12, Pasar Minggu, Jakarta - 12520  
Phone: +62-21-7804255  
Email: purwitom@gmail.com

Mr Yoshiki SATOMI  
Agricultural and Marine Products Office  
Trade and Economic Cooperation Bureau  
Ministry of Economy, Trade and Industry  
2-2-1 Kasumigaseki, Chiyoda-ku  
Tokyo 100-8919  
Phone: +81 3 3501 0532  
Fax: +81 3 3501 6006  
Email: satomi-yoshiki@meti.go.jp

## JAPAN

Mr Masanori MIYAHARA  
Chief Counselor  
Fisheries Agency of Japan  
1-2-1 Kasumigaseki, Chiyoda-ku  
Tokyo 100-8907  
Phone: +81 3 3591 2045  
Fax: +81 3 3502 0571  
Email: masanori\_miyahara@nm.maff.go.jp

Mr Takuya TANIMOTO  
Fishery Division, Economic Affairs Bureau  
Ministry of Foreign Affairs  
2-2-1 Kasumigaseki, Chiyoda-ku,  
Tokyo 100-8919  
Phone: +81 3 5501 8000(ext. 3665)  
Fax: +81 3 5501 8332  
Email: takuya.tanimoto@mofa.go.jp

Mr Tetsuya KAWASHIMA  
Assistant Director  
International Affairs Division,  
Fisheries Agency of Japan  
1-2-1 Kasumigaseki, Chiyoda-ku  
Tokyo 100-8907  
Phone: +81 3 3502 8459  
Fax: +81 3 3502 0571  
Email: tetsuya\_kawashima@nm.maff.go.jp

Dr Tomoyuki ITOH  
National Research Institute of Far Seas Fisheries  
Fisheries Research Agency  
5-7-1 Orido, Shimizu-ku, Shizuoka-shi  
Shizuoka 424-8633  
Phone: +81 54 336 6033  
Fax: +81 54 335 9642  
Email: itou@fra.affrc.go.jp

Mr Hitoshi FUJITA  
Assistant Director  
Far Seas Fisheries Division,  
Fisheries Agency of Japan  
1-2-1 Kasumigaseki, Chiyoda-ku  
Tokyo 100-8907  
Phone: +81 3 6744 2364  
Fax: +81 3 3595 7332  
Email: hitoshi\_fujita@nm.maff.go.jp

Mr Masahiro ISHIKAWA  
President  
Japan Tuna Fisheries Co-operative Association  
2-31-1 Eitai, Koto-ku  
Tokyo, 135-0034  
Phone: +81 3 5646 2382  
Fax: +81 3 5646 2652  
Email: gyogyo@japantuna.or.jp

Mr Yukihiro ENDO  
Far Seas Fisheries Division,  
Fisheries Agency of Japan  
1-2-1 Kasumigaseki, Chiyoda-ku  
Tokyo 100-8907  
Phone: +81 3 3502 8204  
Fax: +81 3 3595 7332  
Email: yukihiro\_endo@nm.maff.go.jp

Mr Hiroshi HANEDA  
Japan Tuna Fisheries Co-operative Association  
2-31-1 Eitai, Koto-ku  
Tokyo, 135-0034  
Phone: +81 3 5646 2382  
Fax: +81 3 5646 2652  
Email: gyogyo@japantuna.or.jp

Mr Noriyuki SUZUKI  
Japan Tuna Fisheries Co-operative Association  
2-31-1 Eitai, Koto-ku  
Tokyo, 135-0034  
Phone:+81 3 5646 2382  
Fax: +81 3 5646 2652  
Email: gyogyo@japantuna.or.jp

Mr Mitsunori MURATA  
National Ocean Tuna Fishery Association  
Coop Bldg 7F,  
1-1-12, Uchikanda, Chiyoda-ku  
Tokyo 101-8503  
Phone:+81 3 3294 9634  
Fax: +81 3 3294 9607

Mr Kimio NISHIKAWA  
Japan Tuna Fisheries Co-operative Association  
2-31-1 Eitai, Koto-ku  
Tokyo, 135-0034  
Phone:+81 3 5646 2382  
Fax: +81 3 5646 2652  
Email: gyogyo@japantuna.or.jp

Mr Masamichi MOTOYAMA  
Consultant  
National Ocean Tuna Fisheries Association  
Coop Bldg. 7F 1-1-12 Uchikanda, Chiyoda-ku  
Tokyo 101-8503  
Phone: +81 3 3294 9633  
Fax: +81 3 3296 1397  
Email: m.motoyama.fishery@hotmail.co.jp

## NEW ZEALAND

Mr Nozomu MIURA  
Manager  
Japan Tuna Fisheries Co-operative Association  
2-31-1 Eitai, Koutou-ku  
Tokyo 135-0034  
Phone: +81 3 5646 2382  
Fax: +81 3 5646 2652  
Email: miura@japantuna.or.jp

Mr Arthur HORE  
Fisheries Manager HMS/Pelagic  
Ministry of Fisheries  
PO Box 19747  
Auckland 1026  
Phone:+64 9 820 7686  
Fax: +64 9 820 1990  
Email: arthur.hore@fish.govt

Mr Toshiaki KANAZAWA  
National Ocean Tuna Fishery Association  
Coop Bldg 7F,  
1-1-12, Uchikanda, Chiyoda-ku  
Tokyo 101-8503  
Phone:+81 3 3294 9634  
Fax: +81 3 3294 9607

Mr Don MACKAY  
Special Adviser  
Ministry of Foreign Affairs & Trade  
Private Bag 18 901  
Wellington  
Phone:+64 4 439 8748  
Fax: +64 4 439 8103  
Email: don.mackay@mfat.govt.nz

Mr Hirohito IKEDA  
National Ocean Tuna Fishery Association  
Coop Bldg 7F,  
1-1-12, Uchikanda  
Chiyoda-ku, Tokyo 101-8504  
Phone:+82 3 3294 9634  
Fax: +82 3 3294 9607

Ms Alice REVELL  
Legal Division  
Ministry of Foreign Affairs and Trade  
Private Bag 18-901  
Wellington  
Phone:+64 4 439 8340  
Fax: +64 4 439 8103  
Email: Alice.Revell@mfat.govt.nz

## REPUBLIC OF KOREA

Ms Stephanie HILL  
Fisheries Analyst  
Ministry of Fisheries  
P.O. Box 19747  
Auckland 1026,  
Phone:+64 9 820 7785  
Fax: +64 9 820 1990  
Email: stephanie.hill@fish.govt.nz

Dr Kevin SULLIVAN  
Science Manager  
Ministry of Fisheries  
P O Box 1020  
Wellington 6011  
Phone: +64 4 8194264  
Fax: +64 4 819 4261  
Email: kevin.sullivan@fish.govt.nz

Mr Eric BARRATT  
Managing Director  
Sanford Limited  
PO Box 443, Auckland  
Phone:+64 9 3794720  
Fax: +64 9 309 9545  
Email: ebarratt@sanford.co.nz

Mr Charles HUFFLETT  
Managing Director  
Solander Fisheries Ltd  
PO Box 5041, Port Nelson  
Phone:+64 3 545 9652  
Fax: +64 3 545 9651  
Email: cch@solander.com

Ms Abigail VINK  
Second Secretary (Political)  
New Zealand Embassy, Seoul  
Phone:+ 82 2 3701 7720  
Email: abigail.vink@mfat.govt.nz

Mr Iljeong JEONG  
Director  
International Fisheries Organization Div.  
Ministry for Food, Agriculture, Forestry and  
Fisheries  
88, Gwanmun-Ro, Gwacheon-si  
Gyeonggi-Do, Korea, 427-719  
Phone: +82-2-500-2408  
Fax : +82-2-503-9174  
Email:ijeong@korea.kr

Mr Chiguk AHN  
Deputy Director  
International Fisheries Organization Div.  
Ministry for Food, Agriculture, Forestry and  
Fisheries  
88 Gwanmu-ro, Gwacheon-Si  
Syeonggi-do, Korea 427-719  
Phone: +82-2-500-2414  
Fax : +82-2-503-9174  
Email:chiguka62@yahoo.com

Mr Jongkwan AHN  
Assistant Director  
International Fisheries Organization Div.  
Ministry for Food, Agriculture, Forestry and  
Fisheries  
88, GwanMun-Ro, GwanCheon-si  
GyeongGi-do-Korea 427-719  
Phone: +82-2-500-2415  
Fax : +82-2-503-9174  
Email:ahnjk90@korea.kr

Ms Sangkyoung KIM  
Third Secretary  
Economic cooperation Division  
International Economic Affairs Bureau  
Ministry of Foreign Affairs and Trade  
#37, Sejongno, Jongro-Gu Seoul, Korea  
Phone: +82-2-2100-7715  
Email:skkim@mofat.go.kr

Mr Zang Geun KIM  
Senior Scientist  
International Fisheries Organization Div.  
Fisheries Resources Research Division  
National Fisheries Research & Development Institute  
Phone: +82-51-720-2310  
Fax : +82-51-720-2337  
Email:zgkim@nfrdi.go.kr

## **SOUTH AFRICA**

Mr Doo Hae AN  
Senior Scientist  
International Fisheries Organization Div.  
Fisheries Resources Research Division  
National Fisheries Research & Development Institute  
Phone: +82-51-720-2320  
Fax : +82-51-720-2337  
Email:dhan@nfrdi.go.kr

Mr Andre SHARE  
Chief Director  
Marine and Coastal Management  
P/Bag X2, Roggebaai 8012, Cape Town  
Phone: +27 21 402 3019  
Fax: +27 21 421 5151  
Email: ashare@deat.gov.za

Mr InKeun PARK  
Korea Overseas Fisheries Association  
6th floor, Samho Center Building "A", 275-1,  
Yangjae-dong, Seocho-Ku, Seoul, Korea  
Phone: (822)589-1612  
Fax : (822)589-1630  
Email:parkik@kosfa.org

Mr Craig SMITH  
Deputy Director  
Marine and Coastal Management  
P/Bag X2, Roggebaai 8012, Cape Town  
Phone: +27 21 402 3048  
Fax: +27 21 421 5152  
Email: csmith@deat.gov.za

Mr IKang NA  
Korea Overseas Fisheries Association  
6th floor, Samho Center Building "A", 275-1,  
Yangjae-dong, Seocho-Ku, Seoul, Korea  
Phone: (822)589-1614  
Fax : (822)589-1630  
Email:ikna@kosfa.org

Mr Don LUCAS  
Chair  
Tuna South Africa/ South African Tuna longline  
Association  
7 Neptune Street, Paarden Eiland, 7405, Cape Town  
Phone: +27 21 510 7924  
Fax: +27 21 510 1268  
Email: comfish@mweb.co.za

Mr ChiGon KIM  
Sajo Industries Co., Ltd  
No.157 Chungjeongro 2ga, seodaemungu  
Seoul, Korea  
Phone: +82-3277 1650  
Email:tunaone@sajo.co.kr

## **OBSERVERS**

### **HUMANE SOCIETY INTERNATIONAL**

Mr Nigel BROTHERS  
Consultant, Marine Ecology & Technology  
178 South Arm Drive, Wonga Beach  
Queensland, 4873  
Phone: +61 (0)7 40987662  
Email: brothersbone@yahoo.com.au

## **COOPERATING NON-MEMBERS**

### **EUROPEAN COMMUNITY**

Ms Aleksandra KORDECKA  
European Commission  
J-99 3/50; 1049 Brussels  
BELGIUM  
Phone:+3222974070  
Fax: +3222955700  
Email: aleksandra.kordecka@ec.europa.eu

### **TRAFFIC INTERNATIONAL**

Mr. Glenn SANT  
Global Marine Programme Leader  
TRAFFIC International  
PO BOX U115, University Wollongong  
NSW AUSTRALIA  
Phone: +61 418416030  
Email: glenn.sant@traffic.org



## **WWF**

Mr Alistair GRAHAM  
Email: [alistairgraham1@bigpond.com](mailto:alistairgraham1@bigpond.com)

## **CCSBT SECRETARIAT**

PO Box 37, Deakin West ACT 2600  
AUSTRALIA  
Phone: +61 2 6282 8396  
Fax: +61 2 6282 8407

Mr Robert KENNEDY  
Executive Secretary  
Email: [rkennedy@ccsbt.org](mailto:rkennedy@ccsbt.org)

Mr Shinichi SUZUKI  
Deputy Executive Secretary  
Email: [ssuzuki@ccsbt.org](mailto:ssuzuki@ccsbt.org)

Mr Simon MORGAN  
Database Manager  
Email: [smorgan@ccsbt.org](mailto:smorgan@ccsbt.org)

## **INTERPRETERS**

Ms Saemi BABA

Ms Kumi KOIKE

Ms Yoko YAMAKAGE

**List of Documents**  
**The Extended Commission of the Sixteenth Annual Commission Meeting**

**(CCSBT-EC/0910/ )**

1. Provisional Agenda
2. List of Participants
3. Draft List of Documents
4. (Secretariat) Report from the Secretariat
5. (Secretariat) Revised 2009 Budget
6. (Secretariat) Draft 2010 Budget
7. (Secretariat) Review of SBT Fisheries
8. (Secretariat) Report from the Compliance Committee
9. (Secretariat) Integrated Monitoring, Control and Surveillance System
10. (Secretariat) Monitoring of Japanese wholesale markets and Australian SBT farming operations
11. (Secretariat) Recreational Fisheries
12. (Secretariat) Report of the Ecologically Related Species Working Group
13. (Secretariat) Report from the Extended Scientific Committee
14. (Secretariat) Report from the Strategy and Fisheries Management Working Group
15. (Secretariat) Report from the Second Joint Meeting of Tuna RFMOs and Course of Actions
16. (Secretariat) Total Allowable Catch and its Allocation
17. (Secretariat) Cooperating Non-members
18. (Secretariat) Relationship with Non-members
19. (Secretariat) Activities with Other Organisations
20. (Secretariat) Governance Arrangements– Role of Chair and Commissioners
21. (Secretariat) Program of Work for 2010
22. (Secretariat) Confidentiality of Extended Commission Documents
23. (SC Chair) Report of the Fourteenth Meeting of the Scientific Committee
24. (New Zealand) New Zealand proposals for ongoing consideration of Ecologically Related Species

**(CCSBT-EC/0910/Rep )**

1. Report of the Fourteenth Meeting of the Scientific Committee (September 2009)
2. Report of the Eighth Meeting of the Ecologically Related Species Working Group

- (September 2009)
3. Report of the Operating Model and Management Procedure Technical Meeting (July 2009)
  4. Report of the Strategy and Fisheries Management Working Group Meeting (April 2009)
  5. Report of the Fifteenth Annual Meeting of the Commission (October 2008)
  6. Report of the Third Meeting of the Compliance Committee (October 2008)
  7. Report of the Thirteenth Meeting of the Scientific Committee (September 2008)
  8. Report of the Ninth Meeting of the Stock Assessment Group and Fifth Meeting of the Management Procedure Workshop (September 2008)
  9. Report of the Independent Expert on the Performance Review (September 2008)
  10. Report of the Performance Review Working Group (August 2008)
  11. Report of the Fourteenth Annual Meeting of the Commission (October 2007)
  12. Report of the Twelfth Meeting of the Scientific Committee (September 2007)
  13. Report of the Thirteenth Annual Meeting of the Commission (October 2006)
- 

**(Documents to be discussed from the Compliance Committee Meeting)**

**(CCSBT-CC/0910/SBT Fisheries - )**

New Zealand	Annual Review of National SBT Fisheries—New Zealand
Australia	Australia’s annual review of the Southern Bluefin Tuna Fishery
Indonesia	Annual Review of Indonesian SBT Fisheries for the Annual Commission and Compliance Meetings
Japan	Review of Japanese SBT Fisheries in the 2008 Fishing Season
Taiwan	Review of Taiwan’s SBT Fishery of 2008/2009
Korea	Review of Korean SBT Fishery in the 2008 Fishing Season
South Africa	Annual Review of the South African SBT Fishery for the 16 <sup>th</sup> Annual Meeting of the Commission
European Community	Report of 2008 SBT Fishery – European Community

**(CCSBT-CC/0910/)**

8. (Secretariat) Development of a Unique Vessel Identifier (UVI)
9. (New Zealand) Identification of Options and Priorities for Future Compliance Measures

10. (New Zealand) Draft Strategic Plan for CCSBT
12. (Japanese) Monitoring Japanese Markets

**(CCSBT-CC/0910/BGD )**

1. (Japan)(Secretariat) Secretariat Review of Catches (ESC agenda item 4.2)  
(Originally CCSBT-ESC/0909/04)
2. (Japan) Follow-up analysis on age composition of southern bluefin tuna used for farming in 2007. (Tomoyuki Itoh, Takaaki Sakamoto and Takahisa Yamamoto)  
(Originally CCSBT-ESC/0909/29)
3. (Japan) Analysis of age composition of southern bluefin tuna used for farming in 2008. (Tomoyuki Itoh, Takaaki Sakamoto and Takahisa Yamamoto) (Originally CCSBT-ESC/0909/30)
4. (Japan) Estimation of growth in farmed southern bluefin tuna using the CCSBT conventional tagging data (Osamu Sakai, Tomoyuki Itoh and Takaaki Sakamoto)  
(Originally CCSBT-ESC/0909/31)

Opening Statement by Australia  
CCSBT 16  
Jeju Island, Republic of Korea

Mr Chair, Distinguished Delegates, Ladies and Gentlemen,

Ahnyung haseyo, good morning.

I would like to thank the Government of the Republic of Korea for hosting the 16<sup>th</sup> annual session of the Extended Commission for the Conservation of Southern Bluefin Tuna and, in addition, for selecting such a special location for this important meeting. Our hope is that the serene surroundings of this setting will help focus our discussions and facilitate the development of a common understanding, and achievement of the Commission's primary objective, that is, the conservation and optimum utilisation of southern bluefin tuna. And although this beautiful place, Jeju Island, is known as 'Honeymoon Island', it is with all seriousness that I must say that the 15 year honeymoon of the CCSBT is over.

Southern bluefin tuna is one of the most highly valued fish in the oceans. The fact that southern bluefin tuna is good to eat, some would say delicious, has not worked in their favour. This fact, combined with the high price for southern bluefin tuna and its bluefin cousins has resulted in overexploitation of these species. We are experiencing a form of the often quoted "tragedy of the commons". In the case of southern bluefin tuna, it is a commons that spans a large part of the Earth and it will require cooperation among nations and fishing entities to reverse this overexploitation.

This year the CCSBT Extended Scientific Committee has completed a new stock assessment with some important revisions to the operating model used for these assessments. We believe that this assessment represents an improvement over previous assessments due to a range of factors, including the incorporation of new and better data, notably the fishery independent aerial survey to estimate juvenile abundance carried out by Australia in the Great Australian Bight. Nevertheless, the southern bluefin tuna spawning stock biomass is less than 10% of the spawning biomass that would have existed if the stock had not been fished.

This is an unacceptable situation for any fishery from a biological and an economic perspective. This point is clearly identified in the Australian Government Harvest Strategy Policy which identifies 20% of the unfished spawning stock biomass as the limit reference point, meaning the point below which the stock should not fall. The Harvest Strategy Policy also states that, for a wholly domestic managed fishery, if a stock falls below the 20% limit reference point, all targeted fishing for that stock should cease and a rebuilding strategy should be developed to rebuild the stock. Australia recognises that a globally managed fishery must be managed under different rules, but that the Harvest Strategy Policy principles are relevant.

Australia's Harvest Strategy Policy is consistent with the United Nations Convention on the Law of the Sea and the Implementing Agreement on the Conservation and Management of Straddling Fish Stocks and Highly Migratory Fish Stocks. These treaties must guide all Members of this Commission.

Southern bluefin tuna has already experienced years of recruitment failure, the four years from 1999 to 2002. At CCSBT13 in 2006 the Commission sought to ensure that the stock would not decline below the 2004 spawning biomass in 2014, in anticipation of the possible negative impact of these poor recruitment years on the size of the spawning stock at that time. However, we do not have evidence of recovery of the spawning stock biomass and further years of poor recruitment are possible.

The Commission must act to reverse this trend and agree to a strategy to rebuild the stock. The Extended Scientific Committee has called for "...a meaningful reduction in catch..." to allow the stock to rebuild. The Commission has already taken the first steps towards rebuilding when the CCSBT Strategy and Fisheries Management Working Group agreed to an interim rebuilding target of 20% of the unfished spawning stock biomass. The Commission Members must work together and come to an agreement to ensure that we can achieve the goal within a reasonable timeframe.

Australia recognises the need to reduce the global total allowable catch of southern bluefin tuna. For Australia, such a decision is particularly critical. Although Australia is not a so-called 'fishing nation', and we are joined in this Commission by Members with far larger fishing industries, Australia does have some very important and valuable fisheries. Near the top of the list of Australia's most valuable fisheries is southern bluefin tuna, a fishery that is one of our largest in terms of both tonnage and value. Also, the fishery is centred on a single community, Port Lincoln, South Australia and, as a result, it is of great importance to that community and the region. Therefore, Australia expects all Members of the CCSBT to make a contribution to rebuilding the southern bluefin tuna stock.

Australia is all too aware that past behaviour and non-compliance with CCSBT agreements have played the key role in putting all CCSBT Members in the current difficult situation. We also are aware, that, had all Members abided by CCSBT decisions regarding national allocations, the southern bluefin stock would have nearly achieved, if not achieved, the current interim rebuilding target of 20% of the unfished spawning stock biomass by 2006. We remain deeply concerned about compliance with national allocations of southern bluefin tuna and the fact that not all Members are complying with decisions made by the Commission. As a result, we recognise that the global catch of southern bluefin tuna is well above the currently agreed Total Allowable Catch. These overcatches must be eliminated.

Australia will continue to work with all Members to ensure that effective monitoring, control and surveillance measures are in place and that catches are effectively controlled. We recognise that the Catch Documentation Scheme, agreed at CCSBT15, will play a key role in achieving that aim. Nevertheless, a Catch Documentation Scheme cannot be

fully effective in eliminating overcatches and illegal catches. Verification regimes must be both effective and widespread. Members and Co-operating non-members, port states and market states must all cooperate to achieve a fully effective management regime for southern bluefin tuna.

Finally, and importantly, we must minimize the impacts of fishing on ecologically related species. We need to meet not just our responsibilities to our own public, but also to the global public. The plight of many seabird species, in particular albatrosses and petrels, is well-recognised and the outlook for some species is dire. Further, we cannot ignore the impact that fishing has on sharks, sea turtles and other marine species and we must take positive steps to reduce these impacts, in accordance with our international legal obligations.

Australia looks forward to frank and constructive discussions and to measures decided upon at this meeting that will put southern bluefin tuna on a rebuilding trajectory.

Thank you, gamsahabnida.

**Opening Statement by the Fishing Entity of Taiwan**

Distinguished delegates, observers, ladies and gentlemen, Good morning

On behalf of my delegation, I would like to extend our appreciation to Korea for choosing this beautiful Island of Jeju as the venue of our meeting. I would also like to welcome the representatives of South Africa, and European Community as Cooperating Non-Member.

The very important issue for this meeting is to decide next year's Total Allowable Catch (TAC). After last 3 years' TAC reduction, from the report of the Extended Scientific Committee (ESC) held in September 2009, we have noted that the fisheries indicators have shown some upward trends, but there remains concern about low spawning stock. The ESC recommends that the Extended Commission effect a meaningful reduction in catch below the current TAC.

For the sustainable use of Southern Bluefin Tuna (SBT), we have to consider how to take immediate reduction of allocations among members. Facing the undesirable circumstance, we are confident that all members of the Extended Commission can make the best decisions on TAC in this meeting to avoid the stock further collapsing.

To ensure the effectiveness of conservation and management measures adopted by the Extended Commission of CCSBT, at the 15<sup>th</sup> annual meeting of CCSBT, the Extended Commission has adopted three highest priority compliance measures, Catch Documentation Scheme (CDS), Vessel Monitoring System (VMS) and Transshipment at sea. Among them VMS and Transshipment at sea have entered into force this year and CDS is going to be implemented on 1 January 2009. I hope it would be benefit for the improvement of data quality and monitoring for national quota after all these measures implemented.

Finally, we look forward to working together with all members and co-operating non-members in the next couple days in producing fruitful results from the meeting.

Thank you.



### Opening Statement by Indonesia

Mr. Chairman, distinguished delegates, observers, ladies and gentlemen.

It is my great pleasure to be here to participate in the 16th annual Meeting of the Commission CCSBT, and on behalf of the Indonesia Government, let me first extend my sincere appreciation and gratitude to the Korean Government for hosting the current session of the Commission meeting in a beautiful island of Jeju.

You may have observed that in this current session, it is the second occasion for Indonesia to participate in the meeting as a full member of the Commission after Indonesia has become full member in early 2008. We are still struggling to fulfill our obligation in the work of the Commission in strengthening the management of southern bluefin tuna, as you may also know that our capacity in terms of human and financial resources is still limited. You may have seen from our representation in the meeting of the Commission and its subsidiary bodies which have been inadequate owing to our limited resources. At this time, unfortunately also that we don't have any representation from the industry. Nonetheless, we have tried our best to fulfill our obligation.

Distinguished delegates, ladies and gentlemen,

With respect to data collection, we are very grateful for the financial support from OFCF for which under collaboration with IOTC, WCPFC and CCSBT, a workshop on logbook system was organized and held in Jakarta in May 2009. Participants of the workshop not only came from the Government representative but also from the industry, as represented by ASTUIN (tuna fisheries association) and ATLI (tuna longline fisheries association). Despite relatively fast development of Indonesian tuna fisheries in the Indian Ocean, it is clear that for Indonesia, we are still in the initial stage of implementing logbook program in the fishing industry, a program that should have been started earlier when the fisheries was just in the initial stage.

With regard to scientific observer, however, this initiative was started earlier, through the cooperation with IOTC under financial support from Australia and Japan. Only through implementation of the logbook program we hope to be able to strengthen the CDS system, one of our important programs in the Commission for the strengthening of the management of southern bluefin tuna.

Current situation indicates that future of southern bluefin tuna fisheries seems not so bright and call for cooperative effort among members in controlling fishing effort have been echoed in various meetings of the Commission. We are looking forward to working together with other members in finding good solution of the problems.

Finally, as a part of Indonesia commitment to support the Commission, we offer for the holding of the 18th Annual Meeting of the Commission in 2011 be held in Indonesia.

Thank you.

**Opening Statement by Japan**

Good morning.

On behalf of the Japanese delegation, I would like to express our sincere thanks to the Korean government for hosting this meeting in this beautiful place of Jeju Island. Although I am afraid that the meeting will be challenging, we wish to enjoy our stay in this place as much as possible.

Now, this year's Scientific Committee has recommended that we reduce catch of Southern bluefin tuna since the stock status is at a critical level. Japan, as a responsible fishing country, would like to respect this recommendation by the Scientific Committee. Fortunately, the Southern bluefin tuna will not be proposed to be listed on Appendices to CITES in the next Conference of the Parties to the Convention, but its stock status is thought to be worse than that of Atlantic Northern bluefin tuna, which has been proposed to be listed on CITES Appendices. In this situation, we are required to take conservation measures based upon the scientific information in this meeting, more than ever before. In addition, we believe protection of juvenile fish, in order to grow them up to spawning stocks, is an important issue as well. We believe that, in case we can not reach an agreement during this meeting, all Members should never be allowed to continue their SBT fisheries under allocations which are voluntary set by themselves, as conducted several years ago. If there is no agreement, Japan has to suspend our SBT fisheries and import of SBT in the next fishing season. Japan cannot receive blame that the Japanese market consumed the Southern bluefin tuna too much and depleted the stocks.

Furthermore, regarding implementation of conservation measures, it was confirmed at the Strategy and Fisheries Management Working Group meeting held in April that all the Members have to equally take stringent measures for their monitoring, control and surveillance, and verification of their catch report. Japan thinks that, along with introduction of CDS, our market can not receive any SBT products which were caught without ensuring such measures.

Having such a serious thought, the Japanese delegation has come to Jeju Island. We strongly wish to achieve significant achievement this week through constructive cooperation with distinguished delegates.

Thank you.

**Translated by Secretariat**

## 日本のオープニングステートメント

おはようございます。

日本代表団を代表して一言申し上げます。最初に、この濟州島という美しい地で会議を主催して下さった韓国政府に心よりお礼申し上げます。本年の会議は難しいものとなりましょうが、我々はこの地での滞在をできる限り楽しみたいと考えております。

さて、本年の科学委員会はミナミマグロについて、現在の資源が非常に懸念すべき状態であるとし、漁獲量の減少を勧告しました。日本は、責任ある漁業国として、この科学委員会からの勧告を尊重したいと考えます。幸運にもミナミマグロは、次回CITES締約国会議で付属書掲載提案を逃れましたが、今回提案された大西洋クロマグロよりも悪い資源状態にあると考えられます。かかる状況で、委員会においては本年、科学的根拠に基づく管理措置をとる必要性が一層増しております。また、未成魚を保護し、産卵まで成長させることも重要な課題です。仮に今回、合意が達成されなかった場合、数年前のように各国随意の枠で漁獲を継続することは許されず、合意がなければ我が国としては明年漁期、漁業や輸入を一時停止(suspend)せざるを得ない状況になると考えます。日本は、日本の市場がミナミマグロを消費しすぎ、ミナミマグロの資源を悪化させたとの非難を受けるわけにはいきません。

更に管理措置の実施についても、締約国は等しく厳しい監視と取締り、漁獲報告の検証(verification)をしなければならないことは、本年4月の戦略・漁業管理作業部会で確認されたとおりです。CDS導入に伴い、我が国としては、こうした実施が確保されていないミナミマグロ製品を自国市場に受け入れるわけにはいかないと考えております。

こうした厳しい方針をもって、日本代表団は濟州島に参りました。是非今週、皆さんと建設的に協力し、有意義な合意を達成したいと考えております。

ありがとうございました。

## Opening Statement by New Zealand

Tena koutou, tēnā koutou, tēnā koutou katoa. Nga mihi nui ki a koutou

[Greetings, greetings, many greetings to you all]

On behalf of the New Zealand delegation I would like to extend our greetings to the Chair, our colleagues from other delegations and to observers at this meeting.

Firstly thank you Chair for your welcome and our thanks also to our hosts for the fine venue provided for our deliberations this week.

Mr Chairman in New Zealand's view it is no exaggeration to suggest that this Commission is at a crisis point. While we look forward to the presentation from the Scientific Chair on the outcomes of this year's assessment of the status of the stock, our reading of the Scientific Committee report confirms what we have all known for some time. That is, that the southern bluefin stock is at a critically low level and that there is a serious risk of further decline if collectively we do not take strong action to prevent this.

That is why we are here. The purpose of regional fisheries management organisations is to provide a framework for their members to cooperate in actions to manage stocks for which they have competency. To date we have failed to achieve the main object of the convention under which we operate, that is the conservation and optimum utilisation of southern bluefin tuna. We have an obligation to change that situation. In our view the scientific advice is unequivocal and now is the time for us to act decisively.

Chair, we have some critical matters to decide on at this meeting. We are required to take action to rebuild the southern bluefin tuna stock. While we have some flexibility to consider the implementation timeframe for meaningful catch reductions in order to mitigate their impact, we cannot delay initiating comprehensive actions to address the scientific advice before us.

Given the critical status of the stock these actions will include measures to ensure that our catches remain within the level to be agreed as an outcome of this meeting. This will mean that all members will need to consider the effectiveness of their compliance regimes and act to correct any weaknesses in those regimes. Monitoring, control and surveillance measures must remain a priority for this Commission.

New Zealand has been committed to, and has actively engaged in, the conservation of southern bluefin tuna since the 1980s and it is with considerable frustration that we find ourselves in a position that we can not realise the full benefits of those actions. Having finally achieved resolution of our long standing claim as one of the original members of CCSBT, we now face the need to consider restrictions on those interests.

Chair, in closing I have been encouraged by the recognition shown by other members of the seriousness of the situation confronting us all. New Zealand prides itself on being a responsible fishing nation and we are committed to the sustainable management of fisheries. We are here to work with other members to that end, but on a final note I will add that we will no longer bear a disproportionate share of that burden.

Thank you

## Opening Statement by Korea

Good Morning.

Mr. Chairman, Distinguished Delegates, Observers, Ladies and Gentlemen.

First of all, I welcome all of you to Jeju Island and it is my great pleasure to host this 16<sup>th</sup> meeting of the CCSBT. I also would like to thank the Secretariat for the tremendous effort and outstanding work for the preparation of this important meeting.

In this occasion, I would like to explain Korea's view in line with our Deputy Minister's welcoming remarks presented in the first day of the Compliance Committee meeting, which strongly requested the Commission to take a decisive action to recover the Southern Bluefin tuna stock.

Last two days, we already had some preliminary discussions on our top agenda: setting the global TAC and its allocation. Like other delegates, Korea shares the view that the global TAC should be reduced, considering the recommendation of the scientific committee meeting, that is, the meaningful reduction of the TAC. Furthermore, we, as a legitimate resource management body, need to show our ability to manage the SBT properly to the international community.

Korea is willing to share the burden of reduction of the global TAC with other members and cooperating-non members on an equitable basis. Given the current critical status of the SBT, Korea also thinks that we need a long-term strategic plan to recover the stock.

On the other hand, monitoring of the fishing activities and catch flow is an essential tool to prevent IUU fishing activities and to contribute to the recovery of the stock. In this sense, Korea would like to put a great importance on the faithful implementation of the Catch Documentation Scheme which will start from the next year. The CDS including tagging scheme, Korea believes, is the strongest catch tracking mechanism among those of the RFMOs to secure accuracy of the catch information from the catch to the market. Although we set up this system with our best efforts, we may meet other problems during the course of the implementation in terms of the practicality or harmonization with other similar schemes in other RFMOs. We want to keep improving the CDS as one of top priorities for the coming years.

Lastly, I would like to encourage all the participants to enjoy the beautiful scenery of Jeju Island, one of the most beautiful places in the world.

Thank you very much.

**16th Annual Meeting of CCSBT  
Jeju Island, Korea, 18-23 October 2009  
EC Opening Statement**

Mr Chairman, Distinguished Delegates, Ladies and Gentlemen,

It is a pleasure for the European Community to be present at the Annual Meeting of the Commission for the Conservation of Southern Bluefin Tuna, and we would like to thank Korea for hosting this meeting in the beautiful island of Jeju.

Tuna fishing is a global phenomenon and developing and supporting a general governance system through international cooperation at multilateral level is one of the EC priorities in our external fishery policy. Our presence here is in line with our general approach, which aims at making any effort to ensure a coherent policy and management action, notably of tuna fisheries, in the different Regional Fisheries Management Organisations. We would also like to confirm our continued commitment to fulfilling our obligations to CCSBT as well as strengthening this RFMO in order to ensure conservation and sustainable management of Southern Bluefin Tuna.

As you are aware, the EC does not target Southern Bluefin Tuna in the fisheries in the Southern Oceans. However, some Community longline vessels have small unavoidable by-catches of Southern Bluefin tuna while undertaking fisheries for swordfish and shark in the area. We are doing our utmost to keep those by-catches to the minimum. In the past year, the Portuguese fleet undertook, with enormous difficulties, successful efforts to limit its by-catches of SBT which currently amount to 0. Similarly, the by-catches of the Spanish fleet correspond to a mere 0.05% of the total catch.

Nevertheless, despite these improvements and all the efforts deployed by our fleet, the European Community has to notice that our catches continue to go beyond the very small allocated quota of 10 tonnes and this is technically unavoidable.

In light of this fact, and bearing in mind the discussions we had last year on this matter, the EC would like to request the Commission to consider granting the EC a modest increase in our cooperation quota, which is indispensable given the nature of the Community longline fisheries in this area.

Such an increase would reflect the technical reality of our fleet's activities on the fishing grounds, noting the very minimal impact of our fishing activities and catches on the overall situation of the Southern Bluefin Tuna stock. We are sure that CCSBT Members will understand our position and appreciate the openness and transparency of our approach in this context

Finally, I would like to underline that the Community was heartened by last year's encouragement from CCSBT Members to extend our participation in CCSBT business to full Membership. The EC would very much appreciate becoming full Member of this Commission and will shortly launch the formal application procedure.

We look forward to participating in this meeting and hope it will be a productive and successful one.

Thank you

## **South Africa's Opening Statement**

South Africa wishes to thank our Korean colleagues for hosting this important, yet challenging, meeting in the tranquil and beautiful setting of Jeju Island. We also express our gratitude towards the secretariat staff for their tireless work in providing the necessary support to this organisation. South Africa is fully aware of the status of the southern bluefin tuna resource and we would like to foster closer working relationships with our colleagues from Member and Co-operating Non-contracting Parties through partnering in the stock rebuilding of this iconic species of the southern ocean.

The South African large pelagic longline fishery is new, with the first commercial fishing rights allocated in 2005. These are long-term rights with the fishery split between 20 swordfish-directed rights and 30 tuna-directed rights. Due to the small current quota of 40t, the South African large pelagic longline fishery is forced to catch southern bluefin tuna as a by-catch species despite the species straddling the waters of South Africa's EEZ. The current quota is not adequate even if caught as a by-catch species for 50% of the fleet, as was demonstrated with the premature closure of the South African southern bluefin tuna fishery in 2007 and 2008. This has caused immense frustration for the right holders, which were required to release all southern bluefin tuna caught once the country quota was filled.

South Africa is now in a position to develop a dedicated longline fishery for southern bluefin tuna for the direct benefit of South Africans. In developing this fishery South Africa would require a substantial increase in quota. In motivation for such an increase in quota we wish to bring the following information to the attention of the Commission:

- 1) South Africa is a developing coastal state;
- 2) South Africa is a range state with southern bluefin tuna migrating through our EEZ;
- 3) South Africa lies adjacent to one of the most important longline fishing grounds for southern bluefin tuna;
- 4) It is estimated that approximately 25% of the global TAC is fished in the region of South Africa;
- 5) South Africa has a good compliance record as is demonstrated at the various RFMO's such as CCSBT, ICCAT, IOTC and CCAMLR;

- 6) South Africa has also proven that it is a responsible fishing nation in the manner in which it has controlled a small southern bluefin tuna quota, which has proven to be extremely challenging;
- 7) South Africa is progressive in the management of its large pelagic fishery with the implementation of rigorous measures such as, mandatory VMS and daily fishing logbooks, monitoring of all landings, extensive observer coverage, prohibition of transshipment at sea, minimum size limits, and validation of statistical documents;
- 8) South Africa has also made great strides in implementing an Ecosystem Approach to Fisheries through self-imposed by-catch limits for sharks and incidental catch limits for seabirds.
- 9) South Africa is an important port state with approximately 3 000 t of southern bluefin passing through our ports annually, hence South Africa has a vital role to play in the management of southern bluefin tuna.

It is acknowledged that South Africa is currently only a Co-operating Non-contracting Party. However, it is also acknowledged that CCSBT is the most costly RFMO in terms of membership fees and with the current quota allocation of 40 t it is not economically feasible for South Africa to ratify the CCSBT agreement, and to meaningfully participate in the meetings of the organisation. In contrast, with a substantial increase in quota South Africa will be able to commit to ratification of the CCSBT agreement. The full membership and equitable allocation to South Africa would benefit the organisation by assisting in the achievement of its strategic goals through: 1) the submission of good fisheries data; 2) dedicated monitoring of foreign vessels landing and transshipping of southern bluefin tuna in South African ports, and; 3) sharing the economic costs and management challenges of the organisation.

In closing, we trust that the deliberations of quota allocations would be conducted in a transparent and equitable manner that would take into account the rights and aspirations of developing coastal range states, like South Africa. South Africa is seeking a substantial increase in quota in order to rightfully develop its southern bluefin tuna longline fishery and to be able to justify the costs of becoming a Member Party of CCSBT. We have proven that we are able to effectively manage our fishery, and to comply with the management and conservation measures of CCSBT. South Africa is confident that as a full Member of the Commission we would play a vital role in the rebuilding this iconic tuna species.



**Opening Statement to the 16<sup>th</sup> Annual Meeting of the Commission for the Conservation of Southern Bluefin Tuna (CCSBT)**

Humane Society International (HSI) welcomes the opportunity to be present as an Observer at the 16<sup>th</sup> Annual Meeting of the Commission.

The Report of the Independent Expert for the Performance Review of the CCSBT recognised the Commission is ‘confronting very significant challenges and meeting them with only limited success’. A significant unmet challenge is the Commission’s failure to properly address the impact of its longline fisheries on ecologically related species.

The Report of the Independent Expert also commented that CCSBT has the opportunity to reverse years of inaction in fulfilling the second part of the CCSBT’s dual mandate to deal with ecologically related species (ERS).

It is for this reason that HSI has made available as its representative, a leading expert on longline fisheries, marine species ecology and ERS mitigation to advantage the Commission in fulfilling its responsibilities. HSI thanks the Australian SBT Industry Association for their financial assistance in this regard.

HSI acknowledges the Commission made a start in this direction at the Commission meeting in 2008 with the adoption of the Recommendation to Mitigate the Impact on Ecologically Related Species of Fishing for Southern Bluefin Tuna.

However, HSI considers it insufficient for the recommendation agreed to last year to only recommend that its members and cooperating non-members comply with the mitigation measures of other RFMOs when operating within their waters and for the Commission not to be willing to take responsibility for new mandatory bycatch mitigation measures that will apply to all longline fishing for southern bluefin tuna (SBT) wherever it occurs. We also note that, when used in isolation, tori lines are an insufficient measure to eliminate seabird bycatch.

The CCSBT management area overlaps with the distribution of 17 of the world’s 24 albatross species. It is possibly the Regional Fisheries Management Organisation having the most significant impact on this group of birds, the majority of which are threatened with extinction. It is estimated that approximately 13,500 seabirds are killed in CCSBT fisheries annually, and that 10,000 of these birds are species of albatross. The report of this year’s ERS meeting indicates that seabird mortality rates are continuing at unacceptably high levels and that members have confirmed these mortality rates have occurred while tori lines are in use.

So HSI welcomes the offer from the New Zealand Government in relation to conducting risk assessments for seabirds and sea turtles and urges all members to cooperate with this urgent work. HSI also supports the ERSWG recommendations to improve data collection for ERS.

However, while information is gathered and risk assessments are conducted to refine future ERS management, mitigation measures proven to be effective in minimising seabird bycatch in other longline fishing operations must be deployed immediately by all SBT fishing vessels. For example, the options of night setting and line weighting have seen seabird bycatch rates decline dramatically at the Commission for the Conservation of Antarctic Marine Living Resources, so much so that zero seabird bycatch is now regularly reported from within the CCAMLR Convention Area. (An achievement the CCSBT threatens to undermine by failing to mitigate longline fishing impact on the same birds outside the CCAMLR Convention area).

To reverse the years of inaction, HSI strongly urges CCSBT Members to waste no more time in agreeing to the urgent adoption of night setting and line weighting as mandatory measures, coupled with other bait protection strategies, during all SBT longline fishing operations.

To address the problem of shark bycatch, HSI recommends the adoption of a non retention policy and closures for high risk areas and times. If sharks are to be retained then they must not be finned. We further recommend research and development into mitigation measures to prevent the incidental capture of shark species.

HSI calls for an urgent investigation into the extent of marine turtle bycatch in SBT longline fisheries, particularly those operating on the SBT spawning grounds where the risk of turtle bycatch is likely to be high.

Given the ground there is to make up on bycatch mitigation, HSI strongly urges the Commission to agree to annual meetings of the Ecologically Related Species Working Group. The CCSBT will be judged on its dual mandate to manage both the sustainability of fishing for SBT and the impacts on ecologically related species. The CCSBT cannot in any way afford to slow efforts on ERS with less frequent meetings of the working group.

HSI has read with concern the revised population estimates for SBT detailed in this year's Scientific Committee report. It is our view that fishing for SBT needs to be temporarily suspended until such time that the population has recovered to levels that would allow it to be fished at ecologically sustainable levels. Such a pause in fishing would provide the Commission with an ideal opportunity to agree to measures that would enable the fishery to resume on an ecologically sustainable basis in terms of both the target species and ecologically related species.

HSI thanks members for their attention to these important matters.

**TRAFFIC and WWF Opening Statement**  
**16th Annual Meeting of the Commission for the Conservation of Southern Bluefin**  
**Tuna (CCSBT 16)**  
**Jeju 14 October 2009**

Thank you Mr Chairman.

TRAFFIC, the wildlife trade monitoring network, and WWF the conservation organization would like to thank the Commission for the opportunity to participate as observers to meetings of the Commission and the Extended Commission. We look forward to contributing to these critical deliberations and to helping to implement subsequent decisions. We earnestly hope and expect that Members will make the necessary decisions with the necessary sense of urgency to effectively conserve the southern bluefin species of tuna and other ecologically related species, especially sharks, seabirds and turtles.

There are many steps still to be taken by this Commission to realize the extent of transparent reporting of catch and trade of SBT that is necessary to ensure that Illegal, Unreported and Unregulated fishing for SBT, by both Members and non-Members, can be eliminated. Nevertheless, we would like to acknowledge the good progress that has been made in introducing a Catch Documentation Scheme, a Vessel Monitoring System and Transshipment arrangements. We consider it important, however, that the discussion of the full range of integrated monitoring, control and surveillance systems that began at CCSBT 13 is continued. In particular, we support the Compliance Committee recommendation that a risk assessment be conducted intersessionally to prioritise action by the Commission, and by Members and non-Members, on identified urgent compliance gaps.

TRAFFIC and WWF remain deeply concerned about the need for conservation of ecologically related species as well as SBT. We are particularly concerned at the lack of binding measures for shark conservation including shark catch reporting & identification, retention of all sharks on board, and retention of fins naturally attached until landed.

We also feel that the Commission needs to take urgent and particular note of the implications for CCSBT of relevant global developments such as the Kobe II process on a range of critical oceans governance issues. Of particular note are:

- The imminent adoption by the FAO Conference of a Port State Control Agreement aimed at minimizing IUU fishing which includes a requirement for flag state validation, and the desirability of its prompt entry into force;
- The importance of securing outcomes from the FAO/IMO flag state implementation discussions aimed at ensuring flag states meet their UNCLOS responsibilities to effectively control vessels, especially fishing vessels;

- The recent submission of a CITES listing proposal for a tuna species has highlighted the view by many in the International Community of the complementarity of CITES to RFMO management;
- The desirability of using the IMO numbering system maintained by Lloyds/Fairplay as the unique vessel identifier system for tuna RFMOs and so potentially capture the efficiencies available by accessing information already supplied by national vessel registers; and
- The need for MOUs between CCSBT and relevant area-based RFMOs (IOTC, CCAMLR and WCPFC) to ensure mandatory application of relevant measures adopted by those RFMOs.

Finally, Mr Chairman, TRAFFIC and WWF support the development of the management procedure within CCSBT and urge its full implementation as a priority. Discussions must focus on promptly returning the SBT population to levels that can be considered biologically safe and consistent with the application of the precautionary principle. TRAFFIC and WWF, like many others watching the performance of CCSBT, are dismayed by the incredibly poor status of the stock, by the lack of an appropriate management response and by the long time for which this unacceptable situation has not been addressed.

Given these concerns and the recommendation of the Scientific Committee that the Extended Commission agree to a “meaningful” reduction in catch, below the current TAC, we consider that a ‘meaningful’ reduction must involve setting a temporary TAC of zero, to be reviewed annually, by the Extended Commission.

Thank you, Mr Chairman.

----- // -----

**For further information, please contact:**

Glenn Sant  
Global Marine Programme Leader  
TRAFFIC International  
[glenn.sant@traffic.org](mailto:glenn.sant@traffic.org)

Alistair Graham  
High Seas Policy Adviser  
WWF International  
[alistairgraham1@bigpond.com](mailto:alistairgraham1@bigpond.com)

Attn: Shinichi Suzuki, [ssuzuki@ccsbt.org](mailto:ssuzuki@ccsbt.org)

**PROCEEDINGS OF THE FINANCE AND ADMINISTRATION COMMITTEE**

1. The Finance and Administration Committee (FAC) considered the revised budget for 2009, proposed budget for 2010, Rule 3 on observer status, and the renewal of the contract for data entry.

***Revised 2009 budget***

2. The FAC welcomed the considerable savings achieved by the Secretariat in the revised 2009 budget, including further savings of \$37K made since the distribution of meeting papers.
3. The Finance and Administration Committee **recommends** that the updated revised budget for 2009 (**Annex A**) be agreed by the Commission. The revised budget predicts a net saving of \$216,468 against the budget approved at CCSBT 15.

***Proposed 2010 budget***

4. The FAC considered the proposed budget for 2010.
5. The FAC noted that the venue costs for next year's meetings in Taiwan require a \$72K increase from last year's budget, despite the considerable reduction in costs already negotiated.
6. Travel costs of the Secretariat and advisory panel for meetings were expected to increase substantially due to opportunistic savings made in 2009 that were unlikely to be realised in 2010. Savings from moving to "paperless" meetings are to be offset by an increase in translation costs as the Secretariat intends to outsource more translation in 2010.
7. The opportunity to save costs by decreasing the membership of the scientific panel was discussed with the Chair of the ESC.
8. The Finance and Administration Committee **notes** that the scientific panel could be reduced by one member if the work plan proposed by the ESC is approved by the Extended Commission. The expected savings would be about \$24K. The FAC recommends that attendance of the full scientific panel remains in the budget although it is noted that attendance of the full panel may not be required.
9. The FAC considered an alternative venue to Seattle (i.e. Canberra) for the Operating Model Technical Meeting, but decided against this because the meeting costs were estimated to increase by \$40K.
10. The FAC agreed to add one more CCSBT meeting to the proposed 2010 budget, as a contingency, as it appeared highly likely from plenary discussions that the Commission would require an extra inter-sessional meeting. The increase in budget was \$63,179 based on the cost of the 3 day meeting held in Tokyo during April 2009, noting that no decision on meeting or location had been made.

11. Options for the production of education pamphlets in accordance with the recent ERS recommendation were considered.
12. The Finance and Administration Committee **recommends** that in 2010 the Secretariat commence work to update the seabird and shark species identification guides and if possible publish these to the CCSBT web site at no additional cost. The FAC also **recommends** that the Secretariat, in conjunction with Members, scope and cost the remaining work recommended by the ERSWG, including printing the identification pamphlets and producing revised sea bird and shark education pamphlets in all Member languages together with developing a pamphlet on sea turtles for consideration at the October 2010 Extended Commission meeting. This recommendation results in a saving of \$165K from the proposed budget outlined in the meeting papers.
13. The FAC also encouraged the Secretariat to explore opportunities to use existing education material produced by other organisations.
14. The FAC discussed the aerial survey currently funded by Australia and noted that Australia may not fund the survey that is to commence in December 2010. The cost of the survey is \$640K. The FAC agreed that the issue should be considered by the Extended Commission.
15. The Finance and Administration Committee **recommends** that the proposed Secretariat travel budget be revised such that staff attend the CWP/FIRMS meeting in Hobart, the Kobe2 workshop on MCS and catch tracking, a farm familiarisation trip for new staff to Port Lincoln and one contingency trip. The revised travel budget is \$34,000.
16. The Finance and Administration Committee **recommends** that the proposed budget for 2010 (**Annex B**) of \$1,755,951 be agreed by the Commission. The required financial contribution of each Member is shown in the income statement of the budget for 2010.

#### ***Observer list***

17. Changes to Rule 3 for Observers were considered by the FAC and in particular a more detailed process for approving and cancelling long-term observer status.
18. The Finance and Administration Committee **recommends** that Rule 3 be amended as shown in **Annex C**.
19. The FAC recommends that long-term observer status applies to the organisations listed in **Annex D**.

#### ***Contract renewal for data entry***

20. The FAC considered the renewal of the contract for the provision of data entry services, including the Secretariat's declaration of a potential conflict of interest, and noted that it had no concerns with the Secretariat's proposal.

## Annex C

### Draft changes to Rules 3 and 11 of the CCSBT Rules of Procedure to implement the proposal for a long-term observer status

#### RULE 3

##### OBSERVERS

1. In accordance with Article 14 of the Convention, the Executive Secretary may, with the approval of all the Members, invite the following States, entities or organisations to send observers to attend meetings of the Commission:

- (a) any State or entity not party to the Convention, whose nationals, residents  
or fishing vessels harvest southern bluefin tuna, and any coastal State through whose exclusive economic or fishery zone southern bluefin tuna migrates: and
- (b) any inter-governmental or, on request, non-governmental organisations having special competence concerning southern bluefin tuna or competent to contribute to the attainment of the objectives of the Convention.

2. Except as provided in Rules 3.3 and 3.43.5, the Commission shall determine which States, entities, inter-governmental organisations and, on request, non-governmental organisations referred to in Rule 3.1 shall be invited to send observers to attend the next meeting of the Commission at the meeting immediately preceding the one to which the invitation shall be extended.

3. The Commission may approve long-term observer status to specific States, entities, inter-governmental organisations and, on request, non-governmental organisations referred to in Rule 3.1. Approvals by the Commission for long-term observer status will specify the types of meetings to which the approvals apply and approvals will remain in-force until cancelled by the Commission. Any Member may request the cancellation of an approval for long term observer status in writing, together with the reasons for the request. The Executive Secretary will circulate the request, together with the accompanying reasons, for information, to Members of the Commission and the affected observer. The long term observer status will cease on

receipt of the above request from any Member. Such a request may be made intersessionally but no later than 60 days before the next meeting of the Commission. The Executive Secretary shall maintain the list of all current approvals for long-term observer status granted by the Commission and shall issue invitations for observers with long-term observer status to attend the specified meetings in accordance with Rule 3.7.

34. Any non-governmental organisation which has expressed an interest in sending observers to attend a meeting of the Commission shall provide the Executive Secretary with information explaining the organisation's competence concerning southern bluefin tuna or the organisation's competence to contribute to the attainment of the objectives of the Convention.

45. Not less than 50 days before a meeting of the Commission, the Executive Secretary shall advise the Members of the names of States, entities and organisations that do not have long-term observer status in accordance with Rule 3.3 which have expressed an interest in sending observers to attend the next meeting of the Commission, and provide the Members with any information received from non-governmental organisations pursuant to Rule 3.33.4. The Executive Secretary may also suggest to Members the names of States, entities and inter-governmental organisations referred to in Rule 3.1 not otherwise invited to attend a meeting of the Commission whose attendance at that meeting may facilitate the work of the Commission.

56. The Commission shall take a decision to extend an invitation to observers on the Executive Secretary's advice or suggestion made under Rule 3.43.5 in accordance with Rule 6.5. If a Member objects to an invitation being extended to particular States, entities or organisations to send observers to proceedings of the Commission, that Member shall inform the Executive Secretary in writing of its objection together with the reasons for such objection. The Members shall be informed of any objection and any reason given therefor by another Member to extending an invitation to particular observers and that objection shall be considered at an early point at the next meeting of the Commission. The Executive Secretary, upon receipt of the notification in writing of an objection, shall thereupon advise the State, entity or organisation against which the objection has been entered of the objection, by which Member it was lodged and the reasons provided therefor.



~~67.~~ The Executive Secretary shall issue invitations with respect to observers to a meeting of the Commission not less than 28 days before the date of the opening of the meeting. Recipients of invitations shall be required to advise the Executive Secretary in writing at least 14 days before the opening of the meeting of acceptance of the invitation and of details of the observers who will attend the meeting.

~~78.~~ Observers may be present at both public and private sessions of the Commission. If a Member of the Commission so requests, the Commission shall meet without observers present to decide whether the discussion of a particular agenda item shall be restricted to Members. Notwithstanding the foregoing, if a Member so requests, any session of the Commission concerning the invitation to non-governmental organisations to send observers to attend meetings of the Commission, shall be restricted to Members.

~~89.~~ The Chairman may invite observers to address the Commission unless a Member objects. Observers shall not be entitled to participate in the taking of decisions by the Commission and shall not vote.

~~910.~~ Observers may submit documents to the Executive Secretary for distribution to Members as information documents only. Such documents must be relevant to matters under consideration in the Commission. Unless any Member of the Commission requests otherwise such documents shall only be available in the language in which they are submitted.

~~1011.~~ The Commission may decide to consider documents submitted by observers.

## **RULE 3A**

### **CO-OPERATING NON-MEMBERS**

1. A State or entity that is admitted to the Extended Commission in the capacity of a co-operating non-member will have the right to participate actively in meetings of the Extended Commission, the Extended Scientific Committee and their subsidiary bodies, including, but not limited to, the right to make proposals and the right to speak, but not to vote. The Extended Commission may decide to restrict the participation of a cooperating non-member in a particular Agenda item.

.

**RULE 11**

**OTHERS**

1. Unless the Commission decides otherwise, the opening plenary session of a meeting of the Commission shall be open to the public.

2. Subject to Rule 3.7.3.8 all other proceedings of meetings of the Commission shall be private and open only to Members and observers unless decided otherwise by the Commission.

3. The Commission may decide to restrict the proceedings of any meeting to Members.

**Annex D**

List of observers provided with long-term observer status for CCSBT Meetings					
	Strategy and Fisheries Management Working Group	Ecologically Related Species Working Group	Extended Scientific Committee	Compliance Committee	Extended Commission
<b>States</b>					
-					
<b>IGOs</b>					
ACAP		Yes	Yes		Yes
CCAMLR		Yes	Yes	Yes	Yes
ICCAT		Yes	Yes	Yes	Yes
IOTC		Yes	Yes	Yes	Yes
WCPFC	Yes	Yes	Yes	Yes	Yes
<b>NGOs</b>					
Birdlife Int.		Yes			Yes
HSI Int.		Yes			Yes
TRAFFIC Int.		Yes		Yes	Yes
WWF Aust.		Yes		Yes	Yes

## REVISED GENERAL BUDGET - 2009

<b>INCOME</b>	<b>2009 APPROVED BUDGET</b>	<b>2009 REVISED BUDGET</b>	<b>% Variation</b>
<b>Contributions from members</b>	<b>\$1,610,464</b>	<b>\$1,610,465</b>	<b>0%</b>
Japan	\$544,880	\$544,880	
Australia	\$484,120	\$484,120	
New Zealand	\$116,142	\$116,142	
Korea	\$170,827	\$170,827	
Fishing Entity of Taiwan	\$170,827	\$170,827	
Indonesia	\$123,669	\$123,669	
<b>Staff Assessment Levy</b>	<b>\$66,604</b>	<b>\$80,000</b>	<b>20%</b>
<b>Advance Member Contributions (2008)</b>	<b>\$127,929</b>	<b>\$127,929</b>	<b>0%</b>
<b>Carryover from 2008</b>	<b>\$24,471</b>	<b>\$24,471</b>	<b>0%</b>
<b>Interest on investments</b>	<b>\$25,000</b>	<b>\$40,705</b>	<b>63%</b>
<b>TOTAL GROSS INCOME</b>	<b>\$1,854,468</b>	<b>\$1,883,570</b>	<b>2%</b>

<b>EXPENDITURE</b>	<b>2009 APPROVED BUDGET</b>	<b>2009 REVISED BUDGET</b>	<b>% Variation</b>
<b>ANNUAL MEETINGS - (CCSBT16)(CC4)</b>	<b>\$182,700</b>	<b>176,000</b>	<b>-4%</b>
Independent chairs	\$45,500	40,500	-11%
Interpretation costs	\$41,200	44,000	7%
Hire of venue	\$8,800	8,500	-3%
Hire of equipment	\$23,100	22,000	-5%
Catering	\$13,500	13,000	-4%
Translation/printing of meeting documents	\$14,300	14,000	-2%
Secretariat expenses	\$36,300	34,000	-6%
<b>14th SC</b>	<b>\$287,300</b>	<b>202,000</b>	<b>-30%</b>
Interpretation costs	\$45,800	41,000	-10%
Hire of venue	\$21,700	14,000	-35%
Hire of equipment	\$18,600	12,000	-35%
Hire of consultants - Chairs and Adv. Panel	\$135,000	103,000	-24%
Catering	\$15,700	7,500	-52%
Translation/printing of meeting documents	\$16,200	0	-100%
Secretariat expenses	\$34,300	24,500	-29%
<b>SUB-COMMITTEE MEETINGS</b>	<b>\$233,364</b>	<b>139,395</b>	<b>-40%</b>
ERS Working Group Meeting	\$111,292	26,000	-77%
Management Strategy Workshop	\$54,800	63,179	15%
Performance Review	\$0	0	
Operating Model Meeting	\$67,272	50,216	-25%
<b>SPECIAL PROJECTS</b>	<b>\$125,000</b>	<b>89,806</b>	<b>-28%</b>
Operating Model/Management Strategy Development	\$13,900	13,047	-6%
Development of the CPUE series	\$9,300	2,188	-76%
Tagging program coordination	\$89,800	65,000	-28%
Assistance to Indonesia on Operating Model	\$12,000	9,571	-20%
<b>SECRETARIAT COSTS</b>	<b>\$892,604</b>	<b>949,900</b>	<b>6%</b>
Secretariat staff costs	\$476,200	501,000	5%
Staff assessment levy	\$66,604	80,000	20%
Employer social security	\$78,800	83,000	5%
Insurance -worker's comp/travel/contents	\$23,100	15,000	-35%
Travel/transport	\$36,500	31,500	-14%
Miscellaneous translation of documents	\$15,800	20,500	30%
Training	\$3,000	2,000	-33%
Home leave allowance	\$6,000	6,000	0%
Other employment expense	\$2,400	1,500	-38%
Recruitment expenses (Deputy Executive Secretary)	\$110,000	135,200	23%
Staff liability fund (for liabilities at 1 January 2009)	\$55,000	55,000	0%
Staff liability fund (accumulating)	\$19,200	19,200	0%
<b>OFFICE MANAGEMENT COSTS</b>	<b>\$133,500</b>	<b>110,000</b>	<b>-18%</b>
Office lease and storage	\$44,600	40,000	-10%
Office costs	\$66,100	47,500	-28%
Provision for new/replacement assets	\$10,200	7,000	-31%
Telephone/communications	\$12,600	15,500	23%
<b>TOTAL GROSS EXPENDITURE</b>	<b>\$1,854,468</b>	<b>1,667,102</b>	<b>-10%</b>

## DRAFT GENERAL BUDGET - 2010

<b>INCOME</b>	<b>2009 REVISED BUDGET</b>	<b>PROPOSED 2010 BUDGET</b>	<b>% Variation</b>
<b>Contributions from members</b>	<b>\$1,610,465</b>	<b>\$1,434,828</b>	<b>-\$175,637</b>
Japan	\$544,880	\$442,172	-\$102,708
Australia	\$484,120	\$442,172	-\$41,948
New Zealand	\$116,142	\$137,131	\$20,989
Korea	\$170,827	\$146,285	-\$24,542
Fishing Entity of Taiwan	\$170,827	\$146,285	-\$24,542
Indonesia	\$123,669	\$120,783	-\$2,886
<b>Staff Assessment Levy</b>	<b>\$80,000</b>	<b>\$75,155</b>	<b>-\$4,845</b>
<b>Advance Member Contributions (2008)</b>	<b>\$127,929</b>	<b>\$0</b>	<b>-\$127,929</b>
<b>Carryover from previous year</b>	<b>\$24,471</b>	<b>\$216,468</b>	<b>\$191,997</b>
<b>Interest on investments</b>	<b>\$40,705</b>	<b>\$29,500</b>	<b>-\$11,205</b>
<b>TOTAL GROSS INCOME</b>	<b>\$1,883,570</b>	<b>\$1,755,951</b>	<b>-\$127,619</b>

<b>EXPENDITURE</b>	<b>2009 REVISED BUDGET</b>	<b>PROPOSED 2010 BUDGET</b>	<b>Variation</b>	<b>% Variation</b>
<b>ANNUAL MEETING - (CCSBT17)(CC5)</b>	<b>\$176,000</b>	<b>\$249,200</b>	<b>\$73,200</b>	<b>42%</b>
Independent chairs	\$40,500	\$47,800	\$7,300	18%
Interpretation costs	\$44,000	\$54,400	\$10,400	24%
Hire of venue	\$8,500	\$44,000	\$35,500	418%
Hire of equipment	\$22,000	\$31,600	\$9,600	44%
Catering	\$13,000	\$13,800	\$800	6%
Translation/printing of meeting documents	\$14,000	\$19,400	\$5,400	39%
Secretariat expenses	\$34,000	\$38,200	\$4,200	12%
<b>SC/ESC Meeting</b>	<b>\$202,000</b>	<b>\$333,200</b>	<b>\$131,200</b>	<b>65%</b>
Interpretation costs	\$41,000	\$56,000	\$15,000	37%
Hire of venue	\$14,000	\$50,200	\$36,200	259%
Hire of equipment	\$12,000	\$34,100	\$22,100	184%
Hire of consultants - Chairs and Advisory Panel	\$103,000	\$128,800	\$25,800	25%
Catering	\$7,500	\$9,700	\$2,200	29%
Translation/printing of meeting documents	\$0	\$15,000	\$15,000	-
Secretariat expenses	\$24,500	\$39,400	\$14,900	61%
<b>SUB-COMMITTEE MEETINGS</b>	<b>\$139,395</b>	<b>\$136,396</b>	<b>-\$2,999</b>	<b>-2%</b>
Ecologically Relates Species WG Meeting	\$26,000	\$0	-\$26,000	-100%
Strategy & Fisheries Management WG Meeting	\$63,179	\$63,179	\$0	0%
Performance Review	\$0	\$0	\$0	-
Operating Model Technical Meeting	\$50,216	\$73,217	\$23,001	46%
<b>SPECIAL PROJECTS</b>	<b>\$89,806</b>	<b>\$90,000</b>	<b>\$194</b>	<b>0%</b>
Operating Model/Management Strategy Development	\$13,047	\$34,700	\$21,653	166%
Development of the CPUE series	\$2,188	\$1,300	-\$888	-41%
Tagging program coordination	\$65,000	\$54,000	-\$11,000	-17%
Assistance to Indonesia on Operating Model	\$9,571	\$0	-\$9,571	-100%
Development & printing of ERS education pamphlets	\$0	\$0	\$0	-
[Aerial Survey \$640K - funding decision yet to be made]				
<b>SECRETARIAT COSTS</b>	<b>\$949,900</b>	<b>\$831,955</b>	<b>-\$117,945</b>	<b>-12%</b>
Secretariat staff costs	\$501,000	\$542,300	\$41,300	8%
Staff assessment levy	\$80,000	\$75,155	-\$4,845	-6%
Employer social security	\$83,000	\$96,400	\$13,400	16%
Insurance -worker's compensation/ travel/contents	\$15,000	\$15,400	\$400	3%
Travel/transport	\$31,500	\$34,000	\$2,500	8%
Miscellaneous translation of documents	\$20,500	\$15,800	-\$4,700	-23%
Training	\$2,000	\$2,000	\$0	0%
Home leave allowance	\$6,000	\$8,000	\$2,000	33%
Other employment expense	\$1,500	\$2,300	\$800	53%
Recruitment expenses	\$135,200	\$0	-\$135,200	-100%
2010)	\$55,000	\$0	-\$55,000	-100%
Staff liability fund (accumulating)	\$19,200	\$40,600	\$21,400	111%
<b>OFFICE MANAGEMENT COSTS</b>	<b>\$110,000</b>	<b>\$115,200</b>	<b>\$5,200</b>	<b>5%</b>
Office lease	\$40,000	\$40,200	\$200	1%
Office costs	\$47,500	\$52,700	\$5,200	11%
Provision for new/replacement assets	\$7,000	\$9,100	\$2,100	30%
Telephone/communications	\$15,500	\$13,200	-\$2,300	-15%
<b>TOTAL GROSS EXPENDITURE</b>	<b>\$1,667,102</b>	<b>\$1,755,951</b>	<b>\$88,849</b>	<b>5%</b>

Commission for the Conservation of  
Southern Bluefin Tuna



みなまぐろ保存委員会

# **Report of the Fourth Meeting of the Compliance Committee**

**18 – 19 October 2009  
Jeju Island, Republic of Korea**



Commission for the Conservation of  
Southern Bluefin Tuna



**みなまぐろ保存委員会**

## **Report of the Eighth Meeting of the Ecologically Related Species Working Group**

**1 – 3 September 2009  
Busan, Korea**

Commission for the Conservation of  
Southern Bluefin Tuna



みなまぐろ保存委員会

**Appendix 2**

**Report of the Extended Scientific Committee for  
the Fourteenth Meeting of the Scientific  
Committee**

**5 - 11 September 2009  
Busan, Korea**

## REPORT ON BIOLOGY, STOCK STATUS AND MANAGEMENT OF SOUTHERN BLUEFIN TUNA: 2009

The CCSBT Extended Scientific Committee conducted a review of fisheries indicators and updated the estimates of spawning stock biomass using the CCSBT operating model during 2009. In response to indications from a 2006 review of SBT data that catches over the past 10 to 20 years may have been substantially under-reported, a range of alternate past catch scenarios was also explored in 2006, but was not updated in 2009. This report updates description of fisheries and the state of stock, and provides fishery and catch information, in the light of these evaluations.

### *1. Biology*

Southern bluefin tuna (*Thunnus maccoyii*) are found in the southern hemisphere, mainly in waters between 30° and 50° S, but only rarely in the eastern Pacific. The only known spawning area is in the Indian Ocean, south-east of Java, Indonesia. Spawning takes place from September to April in warm waters south of Java and juvenile SBT migrate south down the west coast of Australia. During the summer months (December-April), they tend to congregate near the surface in the coastal waters off the southern coast of Australia and spend their winters in deeper, temperate oceanic waters. Results from recaptured conventional and archival tags show that young SBT migrate seasonally between the south coast of Australia and the central Indian Ocean. After age 5 SBT are seldom found in nearshore surface waters, and their distribution extends over the southern circumpolar area throughout the Pacific, Indian and Atlantic Oceans.

SBT can attain a length of over 2m and a weight of over 200kg. Direct ageing using otoliths indicates that a significant number of fish larger than 160cm are older than 25 years, and the maximum age obtained from otolith readings has been 42 years. Analysis of tag returns and otoliths indicate that, in comparison with the 1960s, growth rate has increased since about 1980 as the stock has been reduced. There is some uncertainty about the size and age when SBT mature, but available data indicate that SBT do not mature younger than 8 years (155cm fork length), and perhaps as old as 15 years. SBT exhibit age-specific natural mortality, with *M* being higher for young fish and lower for old fish, increasing again prior to senescence.

Given that SBT have only one known spawning ground, and that no morphological differences have been found between fish from different areas, SBT are considered to constitute a single stock for management purposes.

### *2. Description of Fisheries*

Reported catches of SBT up to the end of 2008 are shown in Figures 1 - 3. However, as a result of indications in SBT data that there may have been substantial under-reporting of SBT catches over the past 10 - 20 year period, there is currently substantial uncertainty regarding the true levels of total SBT catch over this period. Historically, the SBT stock has been exploited for more than 50 years, with total catches peaking at 81,750t in 1961 (Figures 1 - 3).

Over the period 1952 - 2003, 79% of the reported catch was taken by longline and 21% using surface gears, primarily purse-seine and pole&line (Figure 1). The proportion of reported catch made by surface fishery peaked at 50% in 1982, dropped to 11-12 % in 1992 and 1993 and increased again to average 35% since 1996 (Figure 1). The Japanese longline fishery (taking a wide age range of fish) recorded its peak catch of 77,927t in 1961 and the Australian surface fishery catches of young fish peaked at 21,501t in 1982 (Figure 3). New Zealand, the Fishing Entity of Taiwan and Indonesia have also exploited southern bluefin tuna since the 1970s - 1980s, and Korea started a fishery in 1991.

On average 79% of the SBT catch has been made in the Indian Ocean, 17% in the Pacific Ocean and 4% in the Atlantic Ocean (Figure 2). The reported Atlantic Ocean catch has varied widely between about 18t and 8,200t since 1968 (Figure 2), averaging about 850t over the past two decades. This variation in catch reflecting shifts in longline effort between the Atlantic and Indian Oceans. Fishing in the Atlantic occurs primarily off the southern tip of South Africa (Figure 4). Since 1968, the reported Indian Ocean catch has declined from about 45,000t to 10,000t, averaging about 21,000t, and the reported Pacific Ocean catch has ranged from about 800t to 19,000t, averaging about 5700t, over the same periods (although SBT farming and market data analyses indicate that these catches may be under-estimated).

### *3. Summary of Stock Status*

The SBT operating model used in 2008 was revised as described in the report of the Extended Scientific Committee (ESC), and then used to project future stock status under different constant annual catches (ESC report, Table 1 and Figures 1 and 3). The base case scenario is considered the most probable, but account should also be taken of results for the six plausible scenarios (ESC report, Tables 2 and 3 and Figures 4 and 5). These scenarios all indicate that the spawning stock biomass remains at a very low level: typically about 5% or less of  $SSB_0$ , which is a little more than 15% of  $SSB_{MSY}$ . There is no sign of the spawning stock rebuilding.

Recruitments during the last two decades are estimated to be well below the levels over 1950-1980. Recruitment in the 1990s fluctuated at a low level without any overall trend, but recruitments for 2000 to 2002 were poor. The two following year classes were somewhat stronger, though still below the average 1990s level. Recruitments since 2005 cannot be estimated precisely as yet. Although some data give positive signals, it remains probable that at least some of these year classes were as weak as in 2000-2002. As the weak year classes in 2000-2002 move into the spawning stock over the next few years, there will be a negative impact on the spawning stock biomass.

The median projections under the current TAC (of 11810t) for the base case show a decline in spawning stock biomass in the short term (to 2013), and remain below the current level in the longer term (to at least 2025) (see ESC report, Table 1 and Figures 1 and 3). The same is true for nearly all of the other plausible scenarios considered (see ESC report, Tables 2 and 3 and Figure 4). To rebuild the spawning stock and thereby also reduce the risk in the short term of further poor recruitments, a reduction to the current TAC is required (see ESC report, paragraph 106). Projection results for alternative future TAC levels, along with associated probabilities, are shown in these Tables and Figures, with further details to be found in **Attachment 10** of the ESC report.

While rebuilding of the spawning stock would almost certainly increase sustainable yield, the risks that this rebuilding might be jeopardised by further poor recruitments have probably increased since the last assessment. Because the spawning stock biomass is very low, it may not provide security against adverse environmental effects leading to a few years of poor recruitment. Short-term projections for the spawning stock biomass are relatively reliable because the year classes that will shortly join the spawning stock have already been observed in the fishery. However, longer term projections are more uncertain as they depend on future recruitments whose levels have to be determined by use of an estimated stock-recruitment relationship, and so should be treated with greater caution in terms of their implications for appropriate future catch limits.

#### ***4. Current Management Measures***

At its Thirteenth annual meeting the CCSBT agreed to a total allowable catch (TAC) for 2007-2009 of 11,810 tonnes, which was a TAC reduction of 3,115 tonnes. This TAC was only to be reviewed before 2009 if exceptional circumstances emerge in relation to the stock. The current allocation of the TAC amongst Members and Cooperating Non-Members are specified below:-

##### Members

The allocations below are fixed to 2011 for Japan and to 2009 for other Members.

Japan	3,000 tonnes
Australia	5,265 tonnes
Republic of Korea	1,140 tonnes
Fishing Entity of Taiwan	1,140 tonnes
New Zealand	420 tonnes
Indonesia	750 tonnes

##### Cooperating Non-Members and Observers

The allocations amongst Cooperating Non-Members have only been set for 2008.

Philippines	45 tonnes
South Africa	40 tonnes
European Community	10 tonnes

Furthermore, to contribute to the recovery of the SBT stock, Taiwan and the Republic of Korea undertook to maintain their actual catch below 1,000 tonnes for a minimum of 3 years from 2007. This will result in a target catch level below 11,530 tonnes.

The Fifteenth annual meeting of the CCSBT reconfirmed CCSBT13's decision on the TAC and its allocation as summarised above.

The CCSBT has implemented a Trade Information Scheme (TIS) for SBT, in which a CCSBT TIS document must be issued for all exports of SBT. The scheme also requires all Members of the CCSBT to ensure that all imports of SBT are to be accompanied by a completed CCSBT TIS Document, endorsed by an authorised competent authority in the exporting country, and including details of the name of fishing vessel, gear type, area of catch, dates, etc. Shipments not accompanied by this form must be denied entry by Members and Cooperating Non-Members. Completed forms are lodged with the CCSBT Secretariat where they are used to maintain a database for monitoring catches and trade and for conducting reconciliations between exports and imports of SBT.

On 1 July 2004, the CCSBT established a list of fishing vessels over 24 metres in length which were approved to fish for SBT. The list was extended to include all vessels, regardless of size, from 1 July 2005. On 31 December 2008, the CCSBT established a list of authorised farms that are approved to operate for farming SBT and on 1 April 2009, the CCSBT established a list of carrier vessels that are authorised to receive SBT at sea from large scale fishing vessels. Members and Cooperating Non-Members will not allow the trade of SBT caught by fishing vessels and farms, or transhipped to carrier vessels that are not on these lists.

The CCSBT has recognised the critical importance of adopting and fully implementing at the earliest possible time an integrated package of compliance measures that would ensure the elimination of unreported catch and provide accurate data as a basis for proper stock assessment. At its Fifteenth annual meeting, the CCSBT adopted resolutions on the following compliance measures, all of which are to be implemented on or before 1 January 2010:

- A vessel monitoring system
- A catch documentation scheme; and
- Monitoring of transhipments by large scale fishing vessels.

## ***5. Scientific Advice***

In the light of the current stock status and concerns, management advice is as follows.

Positive factors affecting sustainability of future catches are:

- the reported catch has reduced over recent years;
- indicators and the assessment suggest that the 2003 and 2004 year classes are not as low as the weak 2000, 2001, and 2002 year classes; and
- indicators of age 4+ SBT have exhibited some recent upward trends.

However, there remain serious sources of concern from new and previous information including:

- a very low spawning stock (about 5% of  $SSB_0$  and 15% of  $SSB_{MSY}$ );
- the three poor recruitments from 2000 to 2002, and indications of some further poor recruitments after 2004, which will lead to a further decline in spawning stock biomass;
- a general decline in recruitment since about 1970, coincident with declining spawning stock sizes; and
- Current fishing mortality is nearly double  $F_{MSY}$ .

The ESC **recommends** that the Extended Commission effect a meaningful reduction in catch below the current TAC of 11810t.

Noting the Extended Commission's intent to adopt a Management Procedure (MP) at its 2010 annual meeting, and given the high probability that such a MP will require catch and effort data as inputs, the ESC **recommends** that the Extended Commission take steps to ensure accurate future catch and effort reporting.

## **6. Biological State and Trends**

Analyses suggest the SBT spawning biomass is at a low fraction of its original biomass and well below the 1980 level as well as below the level that could produce maximum sustainable yield. Rebuilding the spawning stock biomass would almost certainly increase sustainable yield and provide security against unforeseen environmental events. Recruitments in the last decade are estimated to be well below the levels in the period 1950-1980.

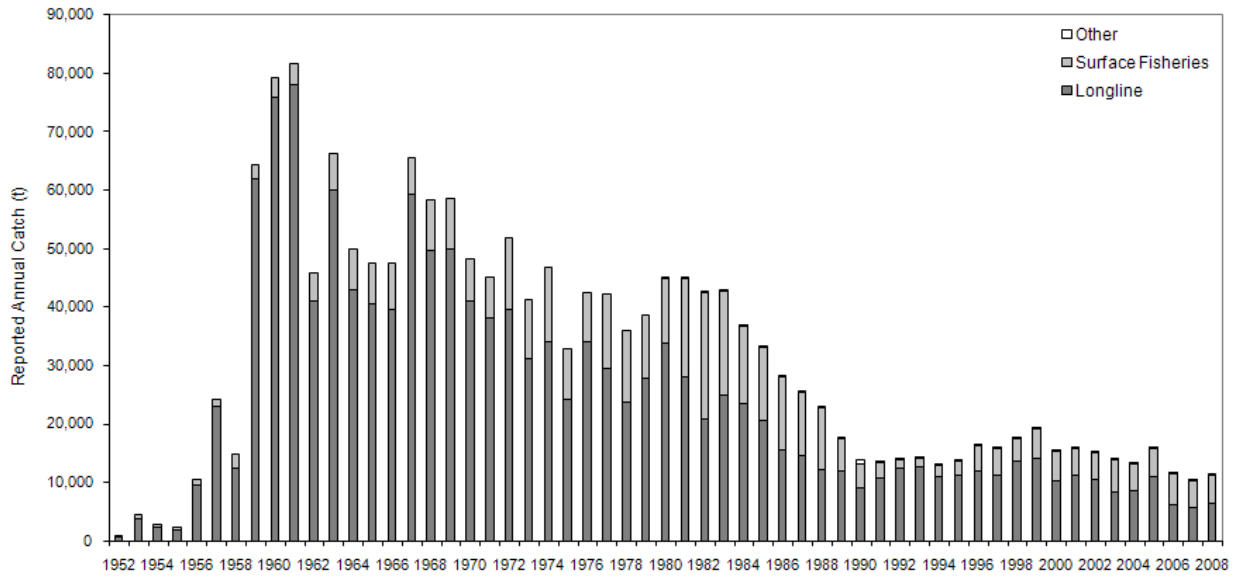
Exploitation rate: High fishing mortality  
 Exploitation state: Overexploited  
 Abundance level: Low abundance

---

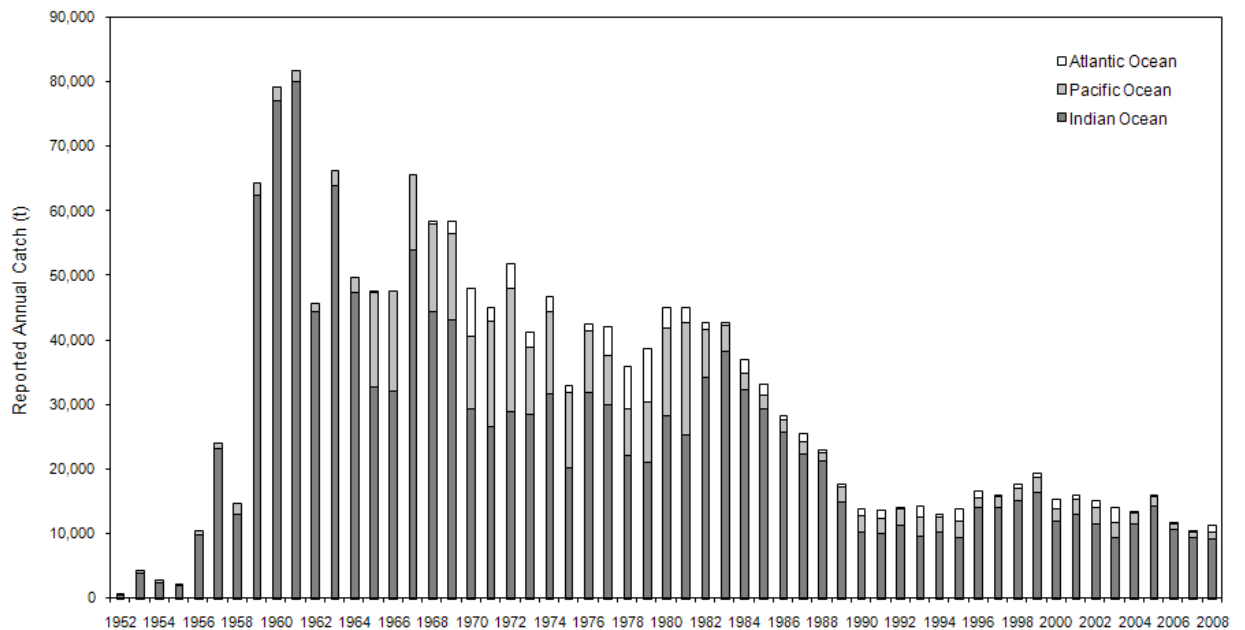
SOUTHERN BLUEFIN TUNA SUMMARY	
(global stock)	
Maximum Sustainable Yield	Not estimated
Reported (2008) Catch	11,369t
Current Replacement Yield	Not estimated
Current Spawner Biomass	44,040 (33,091 – 50,095t) <sup>1</sup>
Current Depletion	SSB <sub>2009</sub> / SSB <sub>0</sub> : 0.036 - 0.051 <sup>1</sup>
Current Management Measures	Global TAC for Members and Cooperating Non-Members of 11,810t.

---

<sup>1</sup> These are the ranges in estimates of median spawning biomass obtained from evaluation of the base case and a range of six plausible scenarios during the 2009 Extended Scientific Committee meeting.

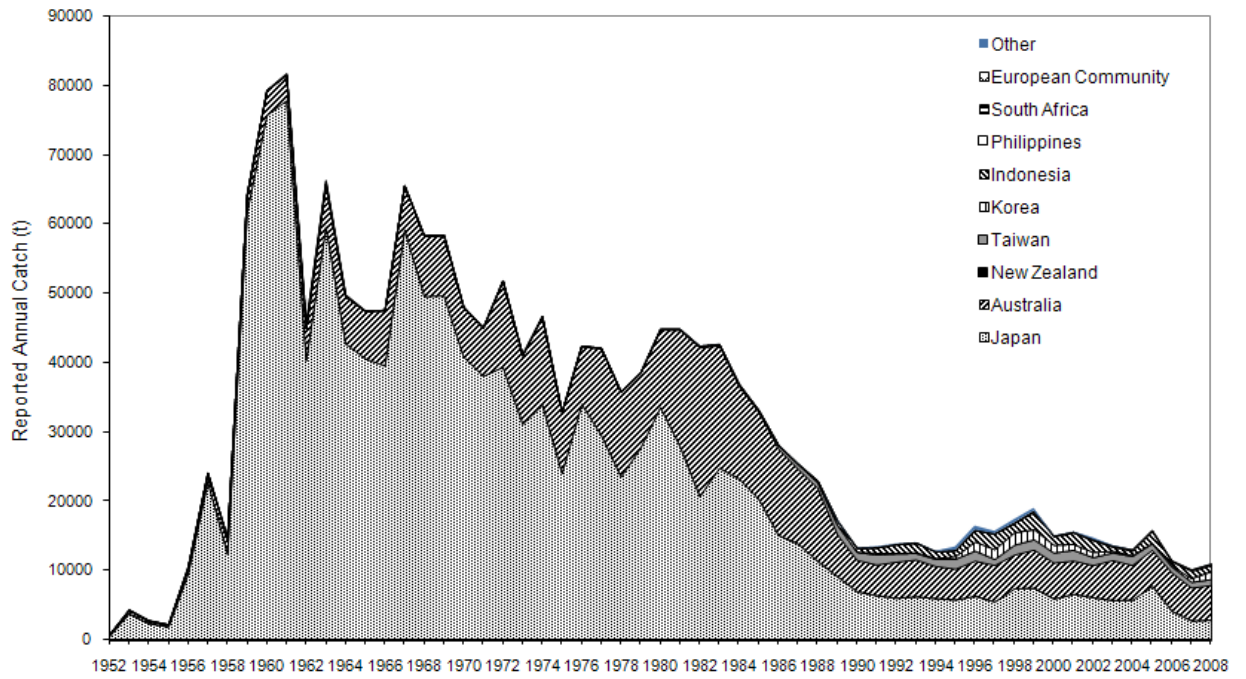


**Figure 1:** Reported southern bluefin tuna catches by fishing gear, 1952 to 2008. Note: a 2006 review of SBT data indicated that catches over the past 10 to 20 years may have been substantially under-reported.

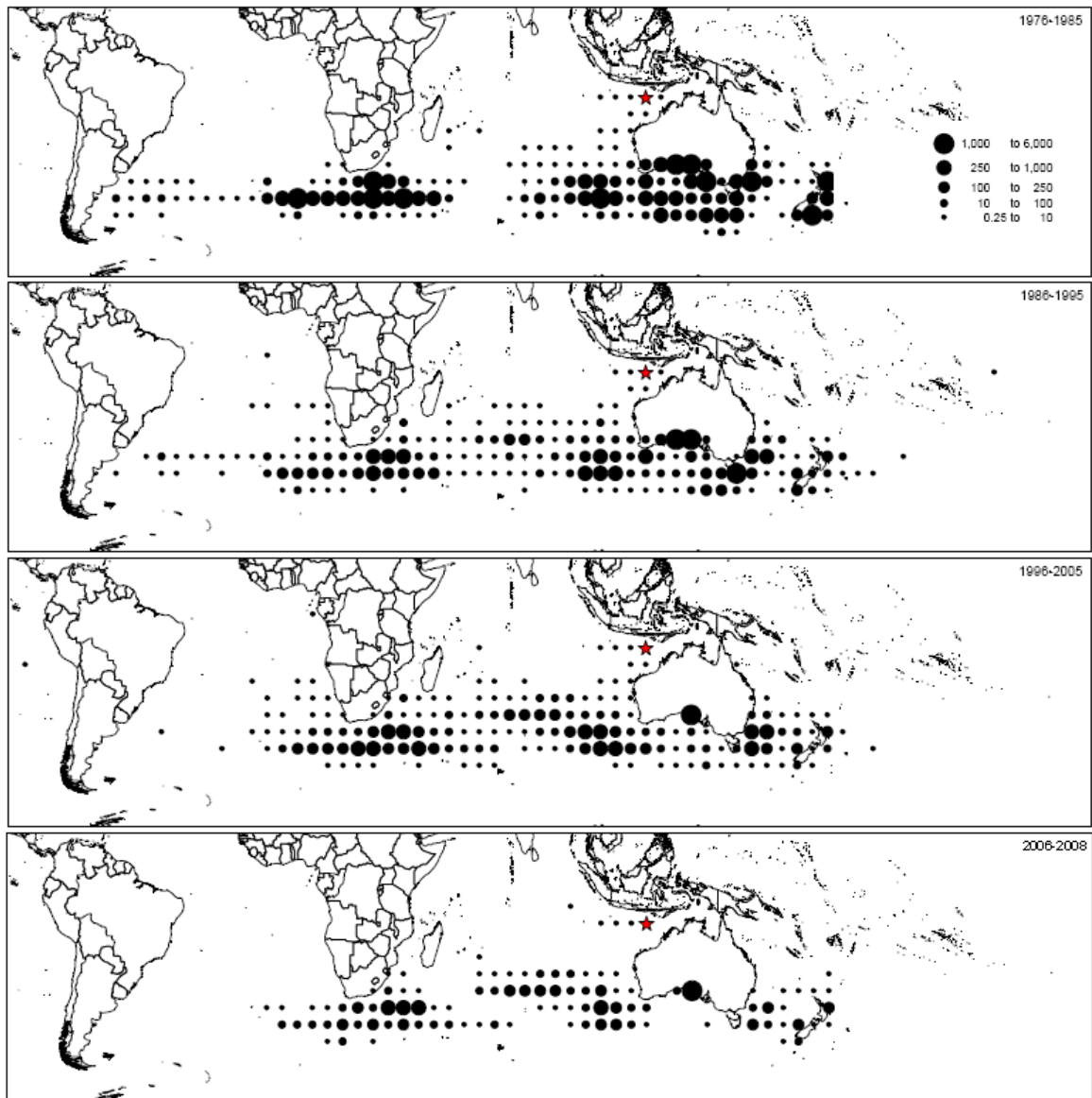


**Figure 2:** Reported southern bluefin tuna catches by ocean, 1952 to 2008. Note: a 2006 review of SBT data indicated that catches over the past 10 to 20 years may have been substantially under-reported.

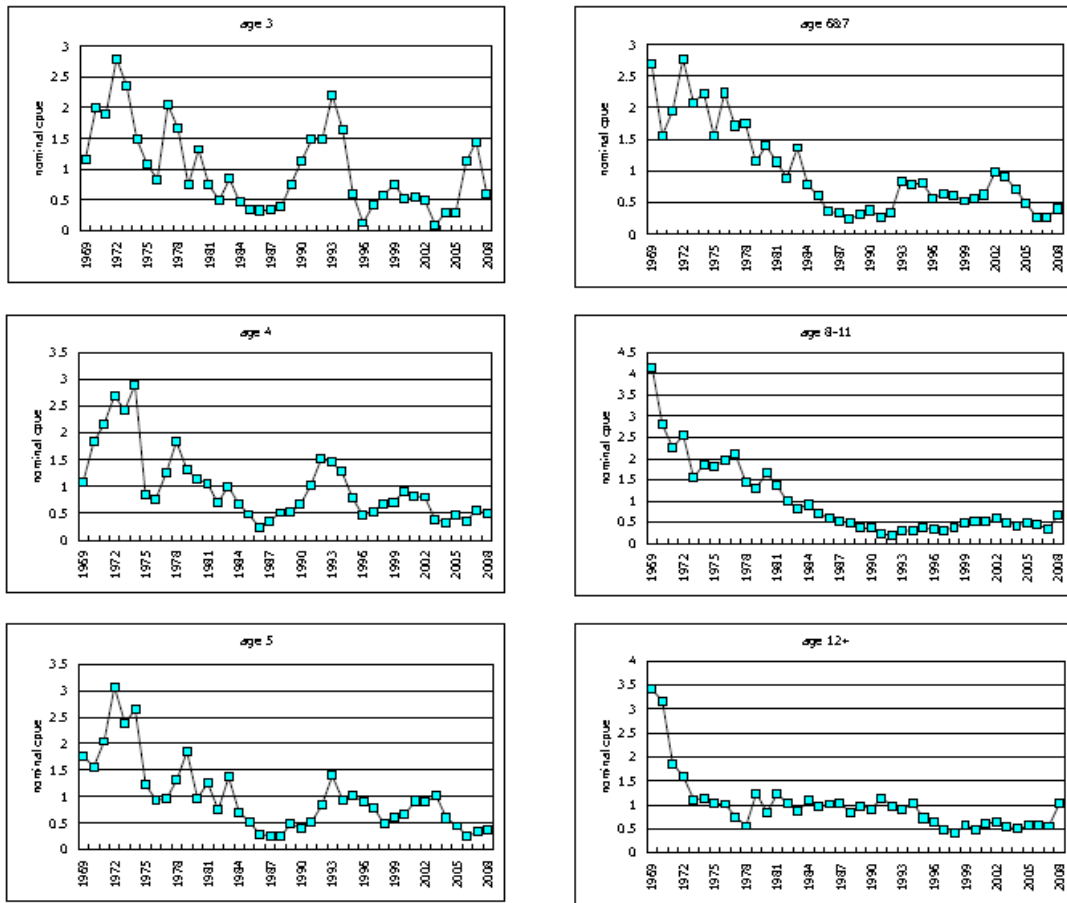




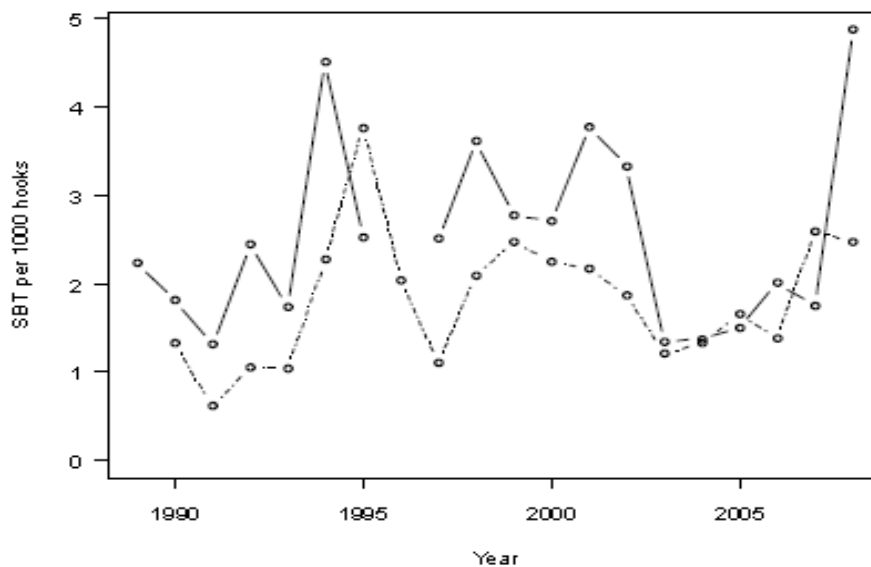
**Figure 3:** Reported southern bluefin tuna catches by flag, 1952 to 2008. Note: a 2006 review of SBT data indicated that catches over the past 10 to 20 years may have been substantially under-reported.



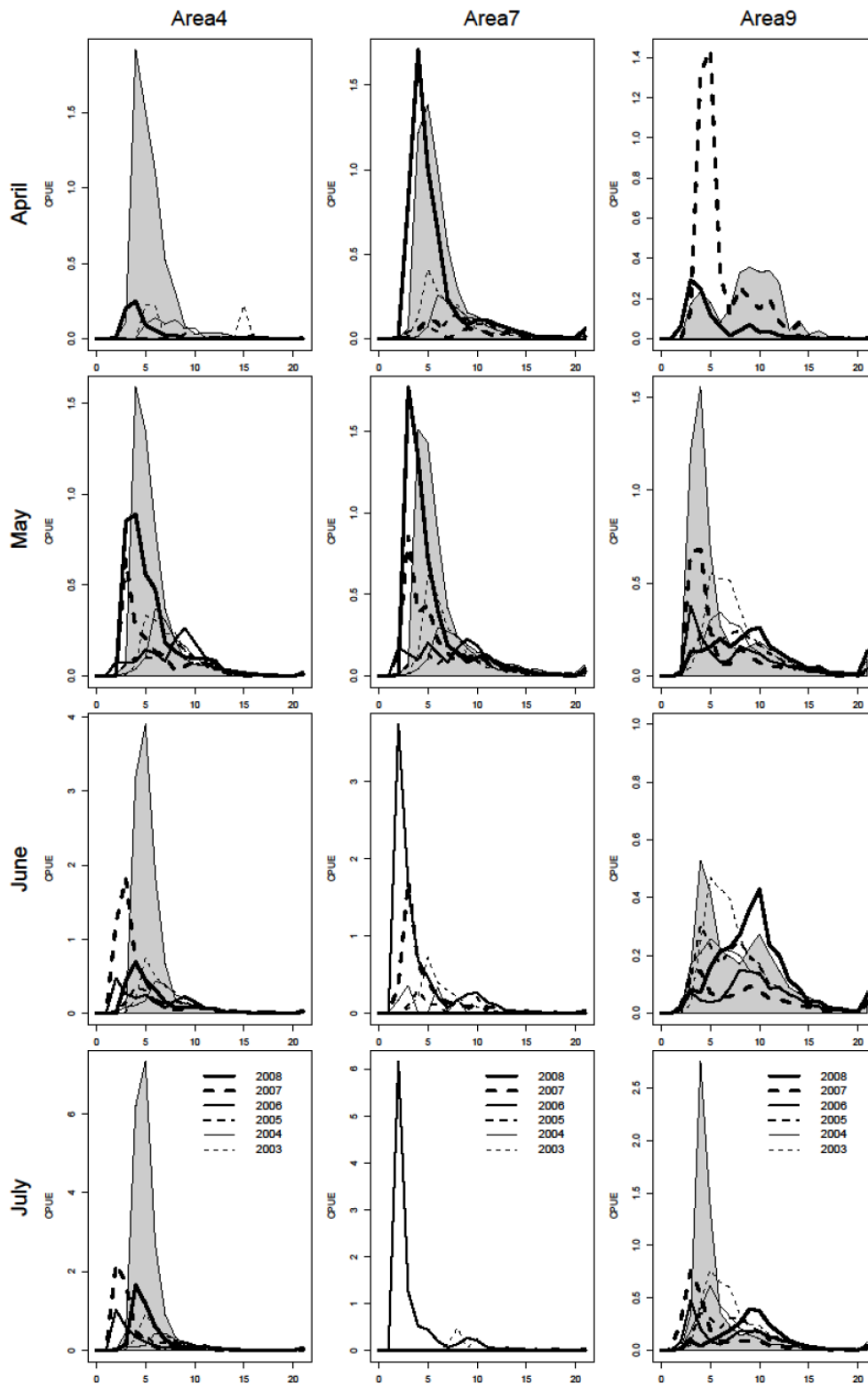
**Figure 4:** Geographical distribution of average annual southern bluefin tuna catches (t) by CCSBT members and cooperating non-members over the periods 1976-1985, 1986-1995, 1996-2005 and 2006-2008 per 5° block by oceanic region. The area marked with a star is an area of significant catch in the breeding ground. Block catches averaging less than 0.25 tons per year are not shown. Note: This figure may be affected by past anomalies in catch.



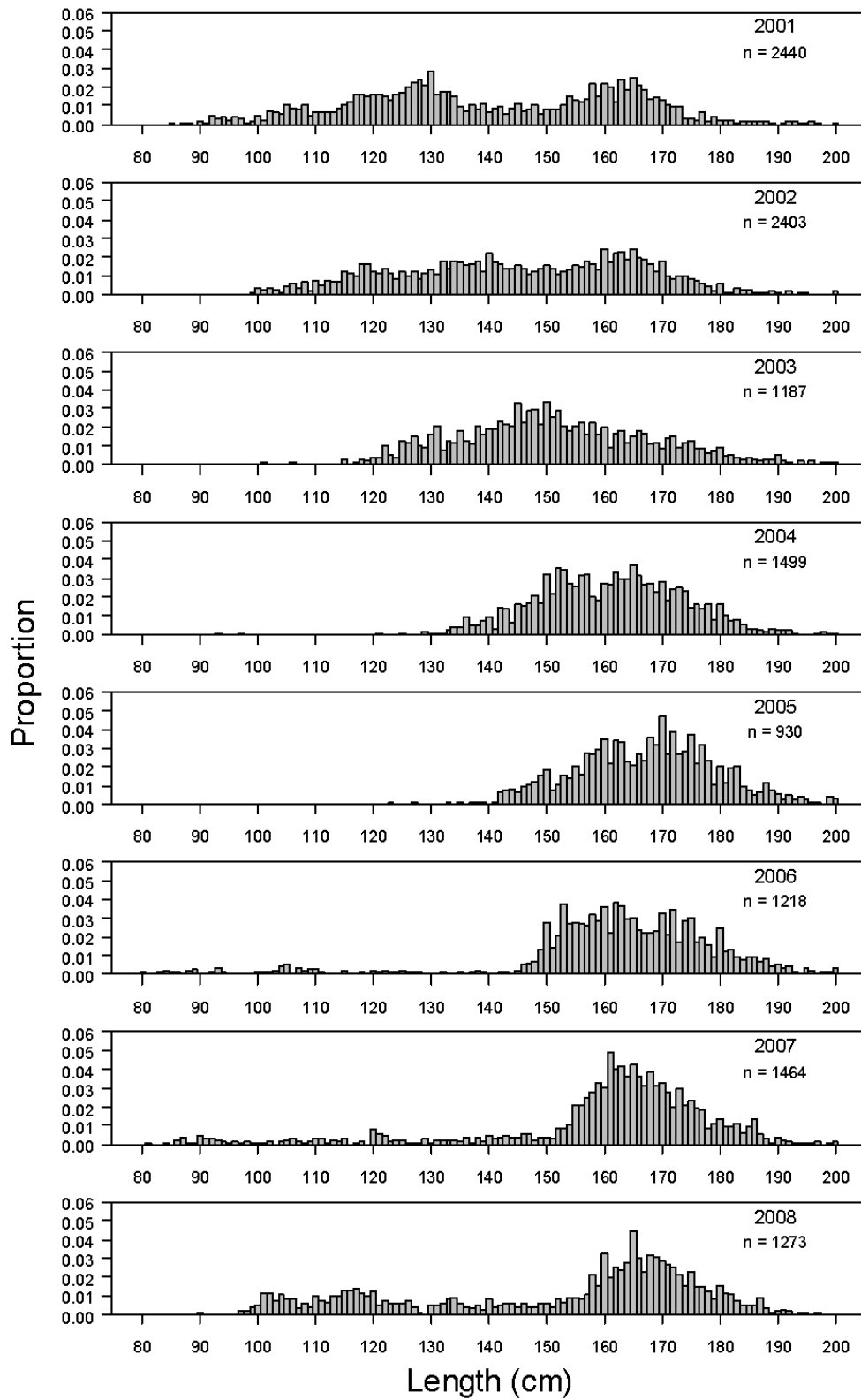
**Figure 5:** Trends in nominal catch rates (numbers per 1000 hooks) of SBT by age group (ages 3, 4, 5, 6-7, 8-11 and 12+) caught by Japanese longliners operating in CCSBT statistical areas 4-9 in months 4-9. Note: This figure may be affected by past anomalies in catch.



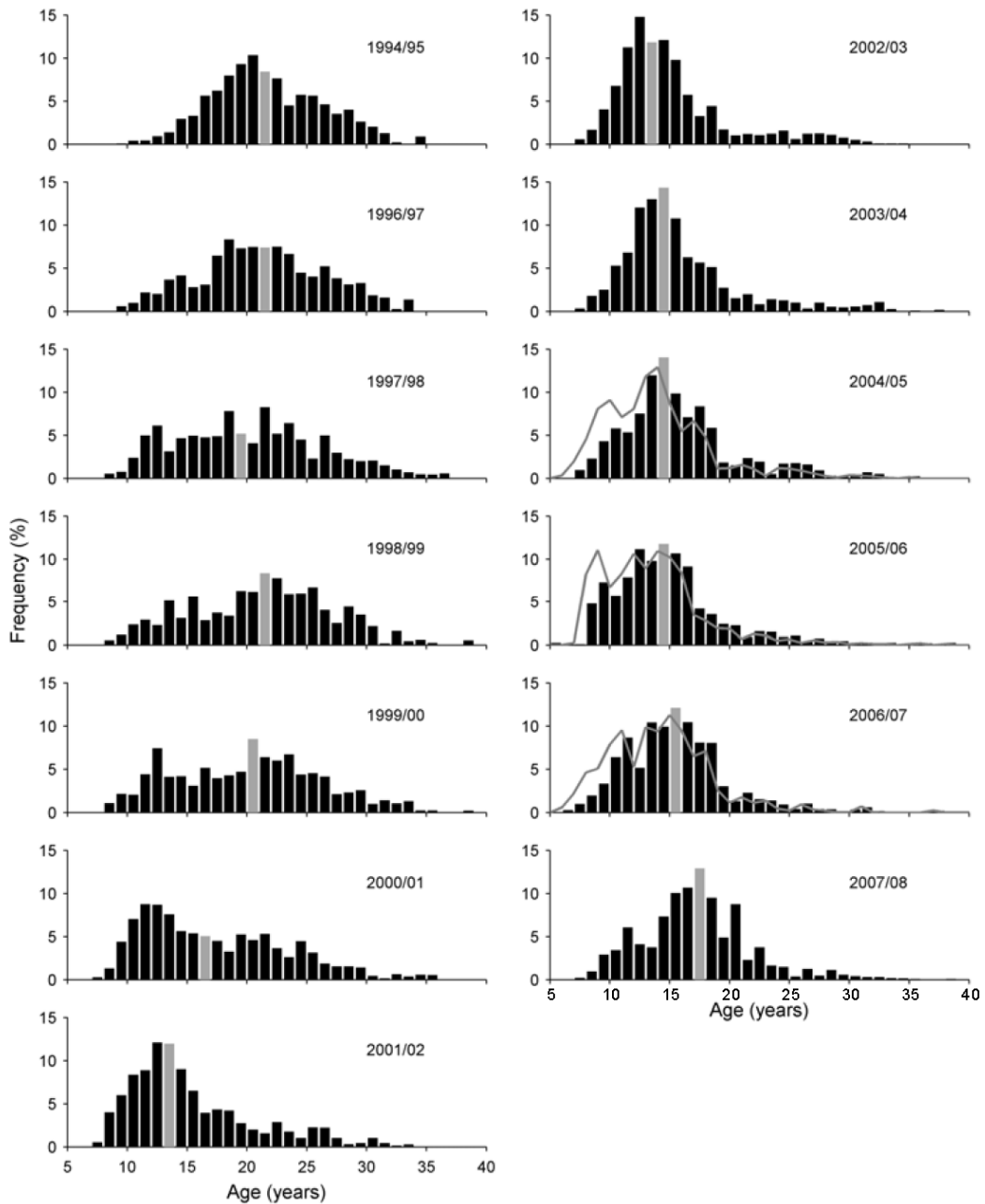
**Figure 6:** Nominal catch per unit effort (number of SBT per thousand hooks) by calendar year for the New Zealand Charter (solid line) and domestic (dashed line) longline fleets based only on effort from sets that either targeted or caught southern bluefin tuna.



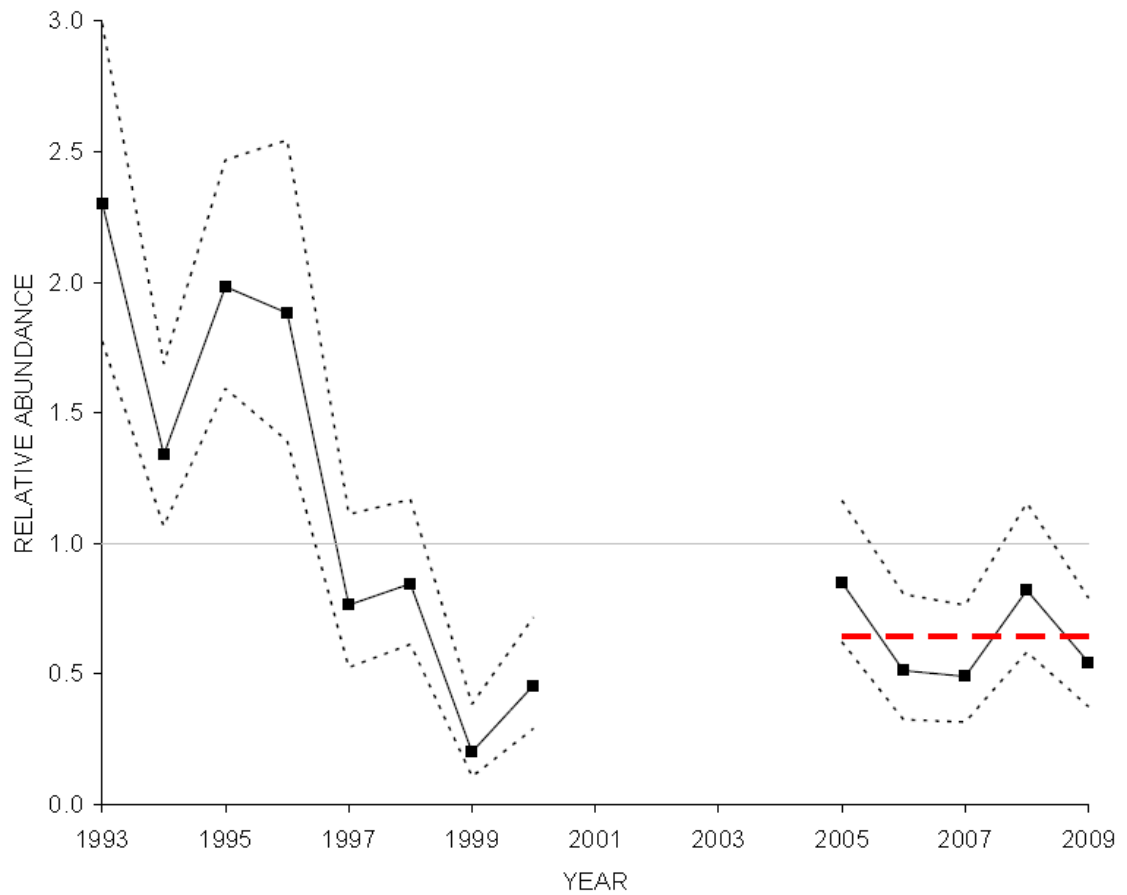
**Figure 7:** Age composition of nominal CPUE of Real Time Monitoring Program data for the Japanese longline fishery for recent seven years by month and area. Note: This figure may be affected by past anomalies in catch.



**Figure 8:** Proportion at length of SBT from the New Zealand charter fleet for 2001 to 2008.



**Figure 9:** Age frequency distribution of SBT in the Indonesian catch on the spawning ground by spawning season estimated using age-length keys from our subsamples of aged fish and length frequency data obtained through the Indonesian monitoring program. The grey bar shows the median age class. For comparison, the age distribution of SBT caught south of the spawning ground (Processor A) is shown for the 2004/05, 2005/06 and 2006/07 seasons (grey line). Source: Farley et al. (2009).



**Figure10:** Aerial survey index of relative abundance of juvenile SBT in the Great Australian Bight, Jan–Mar (hence the 2009 value represents the 2008–09 fishing season etc). Dotted lines are 90% confidence intervals. The horizontal line represents a relative abundance of 1.0; dashed horizontal line represents the average 2005–09 median value

Commission for the Conservation of  
Southern Bluefin Tuna



みなまぐろ保存委員会

# **Report of the Strategy and Fisheries Management Working Group Meeting**

**15 - 16 April 2009  
Tokyo, Japan**



**Resolution on the Total Allowable Catch  
and Future Management of Southern Bluefin Tuna**

The Extended Commission for the Conservation of Southern Bluefin Tuna

*Gravely concerned* about the current status of the stock and, in particular, the most recent stock assessment from the Extended Scientific Committee advising that the spawning stock biomass is between 3% and 8% of the original spawning biomass,

*Taking account* of the recommendation of the Extended Scientific Committee that the Extended Commission effect a meaningful reduction in catch below the current total allowable catch of 11,810t,

*Conscious* of its obligation to conserve and manage the stock of southern bluefin tuna with the aim of its optimum utilisation,

*Mindful* of the desirability of allowing the fishing industry time to adjust to immediate and sustained reductions in the total allowable catch,

*Determined* to rebuild the status of stock to an interim rebuilding target reference point of 20% of the original spawning biomass within a reasonable timeframe,

*Noting* reductions will need to be sustained for a considerable period of time in order to allow the stock to rebuild,

*Recognising* the obligations of each Member and Co-operating Non-Member of the Extended Commission to take the necessary steps to ensure that the level of catch complies with its national allocation and to give effect to the conservation and management measures adopted by the Extended Commission,

In accordance with paragraph 3(a) of Article 8 of the Convention for the Conservation of Southern Bluefin Tuna, the Extended Commission decides as follows:

1. The global TAC for the 2010 and 2011 fishing seasons shall be reduced to an average level over the two years of 80%<sup>1</sup> of the current global TAC.
2. Accordingly the average global TAC for each of the 2010 and 2011 fishing seasons shall be 9449t.
3. By 15 November 2009, each Member shall provide formal advice to the Secretariat regarding how it will split its allocation<sup>2</sup> between the 2010 and 2011 fishing seasons.
4. The CCSBT Management Procedure (MP) should be finalised in 2010 for agreement by the Extended Commission at its annual meeting in 2010.
5. An emergency rule should be developed as part of the MP for exceptional circumstances such as recruitment lower than historically low levels.
6. The MP should be implemented in 2011 and be the basis for TAC setting for 2012 and beyond.

---

<sup>1</sup> Each Member's catch in the first year should be reduced as much as possible and Members should endeavor to reduce by at least 10% below current levels

<sup>2</sup> Members' agreement on national allocations is explained in the report of the Extended Commission.

7. In the event that an MP cannot be finalised by 2012, the Extended Commission shall adopt a reduction of the TAC for the 2012 fishing season to a level of 5,000t - 6,000t unless the Extended Commission decides otherwise based upon the new stock assessment.

**South Africa's Intervention pertaining to its allocation of SBT quota**

South Africa's request for an increase in quota to 750 t was not considered despite Article 8.4 of the Convention which obligates the Commission to consider the request of developing coastal range states. The status of the resource is not a valid reason for not considering South Africa's request for an increase in quota as we were not responsible for the demise of the resource and therefore should not be punished for it. It was further noted that no valid reason was provided by Member Parties for rejecting South Africa's request for an increase in quota. Furthermore, South Africa offered its services to strengthen CCSBT by assisting flag states in the management of their distant water fleets which land or transship large quantities of SBT in South African ports in exchange for a small quota of 340 t, but this was not accepted.

South Africa's proposed allocation representing  $< 0.5\%$  of the TAC is not equitable and the process in determining the TAC and allocation thereof was not considered transparent nor was it in accordance with Article 8.4 of the convention. Hence, South Africa cannot accept the proposed allocation of 40 t tabled by this commission due to the current development of its longline fishery. South Africa hereby reserves its right as a developing coastal range state to implement a self-imposed country quota for the development of its longline fishery. We shall continue to implement a self-imposed country quota until our rights as a developing coastal range state, and the value we can bring to this commission is acknowledged in a meaningful way by this commission.

**Resolution on action plans to ensure compliance with Conservation and Management Measures**

The Commission resolves that:

1. Each Members or Cooperating Non-Member shall submit to the Secretariat by April 1, 2010 an action plan to ensure its compliance with the Commission conservation and management measures, in particular its allocation under the global quota for southern bluefin tuna. The action plan shall include a scheme to systematically verify catch data of SBT and ERS reported by fishermen.
2. The flag Members and Cooperating Non-Members of pelagic longline vessels shall specify in their action plans improvement in at least three areas: port state inspection of transshipment of southern bluefin tuna, verification of catch data through scientific observers on fishing vessels of coverage of 10 % in terms of effort and actual inspection of catches by authorities of those flag Members and cooperating Non-Members. For effective port state inspection, those Members and Non-Members should designate foreign ports of transshipment of southern bluefin tuna for their vessels, prohibit such transshipment at other foreign ports and communicate with those designated port states to share relevant information required for effective inspection. All the above measures should be implemented in a manner that will not interfere with legitimate commercial transaction of SBT.
3. The Members and Cooperating Non-Members farming southern bluefin tuna shall implement in the 2011 fishing season commercial trials of stereo video systems for monitoring 10 % of the southern bluefin tuna transferred to their cages and, if the systems prove successful, adopt them in the following season as the systems for ongoing monitoring.
4. The Extended Commission shall explore the possibility of and if appropriate, develop a regional observer program to be applied to all the SBT fishing and farming activities.
5. All the Members and Non-members shall submit the reports on implementation and results of the action plans in 2010 to the 2010 meeting of the Compliance Committee.

## Draft Strategic Plan for CCSBT

### Purpose

To provide a revised draft strategic plan for the Commission for the Conservation of Southern Bluefin Tuna so Members and cooperating non-members can agree on any additional changes and adopt the revised plan at the annual meeting of the Commission in October 2009.

### Background – why a strategic plan?

A strategic plan allows for the development of a common vision of how members would like to see the Commission in the future. Components of that vision might include the state of the southern bluefin tuna stock; how the Commission operates to effectively manage the stock; and how members are implementing their obligations and benefiting from their successful management of the stock.

A strategic plan outlines a desired future state, and specific strategies and tasks associated with achieving the desired future state (even if achieving that state is a long term goal). The strategic plan will become the basis for the Secretariat and members to compile annual operating plans.

A recent review of the Commission's performance highlighted many areas in which performance may be improved. A strategic plan allows these suggested actions to be incorporated, as appropriate, into future work plans.

A draft strategic plan was first circulated for comment on 1 July 2009. This version of the plan has been revised to reflect Members' comments (Japan and Taiwan).

### Structure of the plan

Perhaps the most important component of a strategic plan is a common **vision** for the future. The vision is linked to the overall **objective** as laid out in the Convention for the Conservation of Southern Bluefin Tuna: ensuring, through appropriate management, the conservation and optimum utilisation of southern bluefin tuna.

**Goals** – the desired future state of the Commission – and **strategies** – the suggested approach to achieving the desired future state – provide greater detail on how the overall objective and vision will be achieved, and on the relative **priorities**.

The recommendations from the **performance review**, and an analysis of the **strengths, weaknesses, opportunities and threats** the Commission faces in achieving the objective outlined in its Convention provide the context for development of these goals.

An **action plan** sets out the proposed timeline for implementing the projects.



# **Strategic Plan for the Commission for the Conservation of Southern Bluefin Tuna**

**DRAFT**

**September 2009**

# Table of Contents

<b>TABLE OF CONTENTS</b>	<b>I</b>
<b>1. INTRODUCTION</b>	<b>1</b>
<b>A strategic plan for the Commission for the Conservation of Southern Bluefin Tuna</b>	<b>1</b>
<b>The Convention for the Conservation of Southern Bluefin Tuna</b>	<b>1</b>
Origins	1
The role of the Commission for the Conservation of Southern Bluefin Tuna	1
Membership of the Commission	2
<b>The southern bluefin tuna fishery</b>	<b>3</b>
Characterisation of the fishery	3
Status of the stock	3
<b>Strategic issues</b>	<b>3</b>
Performance review	4
SWOT analysis	7
<b>Key challenges</b>	<b>7</b>
<b>2. OBJECTIVE, VISION, AND GOALS</b>	<b>9</b>
<b>Convention objective</b>	<b>9</b>
<b>Vision and goals</b>	<b>9</b>
A. Management of SBT	9
B. Operation/Administration of Commission and Secretariat	9
C. Participation and implementation by Members, including Compliance	9
<b>3. PROPOSED ACTION PLAN</b>	<b>15</b>

## 1. Introduction

### ***A strategic plan for the Commission for the Conservation of Southern Bluefin Tuna***

This strategic plan outlines a common vision for how members would like to see the Commission for the Conservation of Southern Bluefin Tuna in the future. Components of that vision include the state of the southern bluefin tuna stock; how the Commission operates to effectively manage the stock; and how members are implementing their obligations and benefiting from their successful management of the stock.

A strategic plan outlines not only a desired future state, but also specific strategies and tasks associated with achieving the desired future state (even if achieving that state is a long term goal). The strategic plan will become the basis for the Secretariat and members to compile annual operating plans.

A recent review of the Commission's performance provided many suggestions for areas in which performance may be improved. A strategic plan allows these suggested actions to be incorporated, as appropriate, into future work plans. Suggested actions are prioritised so that the overall work plan is achievable.

### ***The Convention for the Conservation of Southern Bluefin Tuna***

#### **Origins**

Southern bluefin tuna (SBT) were heavily fished in the past, with annual catches reaching 80,000 tonnes in the early 1960s. Heavy fishing resulted in a significant decline in the numbers of mature fish, and the annual catch began to fall rapidly. In the mid 1980s it became apparent that a way of limiting catches was needed. To enable the SBT stocks to rebuild, the main nations fishing SBT at the time – Australia, Japan and New Zealand – began to apply strict quotas to their fishing fleets from 1985.

On 20 May 1994, the voluntary management arrangement between Australia, Japan and New Zealand was formalised when the Convention for the Conservation of Southern Bluefin Tuna, which the three countries signed in May 1993, came into force.

#### **The role of the Commission for the Conservation of Southern Bluefin Tuna**

The objective of the Convention is to ensure, through appropriate management, the conservation and optimum utilisation of the global SBT fishery. The Convention created the Commission for the Conservation of Southern Bluefin Tuna (CCSBT) and describes how it operates and functions. The functions of the CCSBT include—

- collecting information,
- deciding on a total allowable catch (TAC) and its allocation,



- deciding on additional measures including monitoring, control, and surveillance (MCS) measures considered necessary in order to achieve effective implementation of the Convention,
- agreeing an annual budget, and
- encouraging accession by other states.

The CCSBT meets annually. The CCSBT has six subsidiary bodies which provide advice on their areas of expertise—

- the Scientific Committee (SC)/Extended Scientific Committee (ESC),
- Stock Assessment Group (SAG),
- Ecologically Related Species Working Group (ERSWG),
- the Strategy and Fisheries Management Working Group (SFMWG),
- Compliance Committee (CC),
- the Finance and Administration Committee (FAC).

A panel of independent scientists attend SC and SAG meetings and are able to provide advice directly to the CCSBT if required.

The Convention also provided for the establishment of the CCSBT Secretariat, which supports the running of the Commission. The Secretariat is based in Canberra, Australia. Staff include an Executive Secretary, Deputy Executive Secretary, a Data Manager and other support staff.

### **Membership of the Commission**

Membership of the CCSBT is only open to States. To facilitate the participation of fishing entities, the CCSBT established the extended CCSBT (ECCSBT) and the extended scientific committee (ESC) in 2001. Membership of the ECCSBT and the ESC includes all parties to the Convention, and fishing entities may also be admitted. The fishing entity of Taiwan was admitted in 2002.

The ECCSBT and the ESC perform the same functions as the CCSBT and the SC respectively. Each member has equal voting rights. Decisions of the ECCSBT that are reported to the CCSBT become decisions of the CCSBT unless the CCSBT agrees otherwise. Any decision of the Commission that affects the operation of the ECCSBT or the rights, obligations, or status of any individual member within the ECCSBT should not be taken without prior due deliberation of that issue by the ECCSBT.

Currently the ECCSBT consists of six members and three cooperating non-members:

#### **Members**

- Australia
- Fishing entity of Taiwan (member of the ECCSBT only)
- Indonesia
- Japan
- New Zealand
- Republic of Korea

#### **Cooperating Non-Members**

- European Union
- Philippines
- South Africa

## ***The southern bluefin tuna fishery***

### **Characterisation of the fishery**

The primary market for SBT is the Japanese Sashimi market, where premium prices can be obtained, largely because of the high fat content of SBT flesh. The total value of the SBT global fishery is estimated to be about \$AUD1 billion.

The main methods used for catching SBT are longline fishing and purse seining.

Longlining involves using long lengths of fishing line with many hooks. The SBT caught are mainly frozen at very low temperatures (-60C) and either unloaded at intermediate ports and shipped to markets in Japan or unloaded directly at markets in Japan.

Purse seining involves using purse seine nets to enclose schools of SBT. This method is currently only used in the Australian SBT fishery. The enclosed schools of fish are towed to waters near the Australian mainland and placed in floating cages anchored to the ocean floor. The tuna are fattened for several months and sold direct to Japanese markets as frozen or chilled fish.

### **Status of the stock**

Southern bluefin tuna are recognised as being at a small fraction of their pre-exploitation biomass. The Extended Scientific Committee reported in 2008 that the scenarios analysed indicate that spawning stock biomass is still at a very low level (generally below 10% of pre-exploitation spawning stock biomass). This was recognised as a level at which recruitment may be at risk of further decline. Further, the stock is below the level that could produce maximum sustainable yield, a level that is generally recognised internationally as a benchmark for sustainably managing fishstocks. The scientific committee also noted that there is no sign of the spawning stock biomass rebuilding at present.

### ***Strategic issues***

This section highlights strategic issues facing the Commission that this plan will seek to address. These issues have been identified recently through a performance review; the first meeting of the Strategy and Fisheries Management Working Group; and through an analysis of the strengths, weaknesses, opportunities, and threats (SWOT) facing the Commission. This SWOT analysis helped highlight any other areas outside the performance review that might help the Commission in developing its strategic plan (see below).

In 2008, a Performance Review Working Group made up of representatives from the Commission undertook a self assessment of the Commission's performance, using the criteria adopted at the 2006 Joint Meeting of the five Tuna RFMOs in Kobe, Japan. An independent expert, United States Ambassador David Balton, reviewed the self assessment.

The 2008 meeting of the CCSBT agreed to various initiatives in order to implement recommendations of the performance reviews (see paragraph 41 of the meeting report).

One important outcome of the performance review was to establish a Strategy and Fisheries Management Working Group (SFMWG), to develop a strategic plan for the Commission and a fisheries management plan comprising management objectives for SBT and ecologically related species, consistent with modern fisheries management

principles. The Commission tasked the SFMWG with the development of a strategic plan, as a way of creating a common vision of where members want the Commission to be heading.

### **Performance review**

The performance review highlighted areas where the Commission is doing well, including the inclusion within the Commission as members or cooperating non-members of virtually all fishing activity for SBT; recent improvements in the transparency with which the Commission operates; and the undertaking of the Commission's first performance review.

The performance review also highlighted a number of areas in which the performance of the Commission could improve, as outlined below. The recommendations of the performance review working group and the independent expert have been incorporated into the goals and strategies described later in the plan.

#### *General*

- The CCSBT should examine its Convention, compare it to more modern instruments, and seriously consider the need to renegotiate it. Even if it is not amended at this time, many of the modern standards for fisheries management can be incorporated into the work of the Commission in other ways, including through adoption of additional conservation and management measures and an updated management procedure.
- A strategic plan and management plan could provide direction and common vision, and greatly improve the functioning and performance of the CCSBT.

#### *Conservation and management*

##### *Status of living marine resources*

- Determine management objectives and a rebuild strategy consistent with UNFSA requirements to guide future scientific assessments.
- Develop the most accurate stock assessment possible in light of uncertainties caused by under-reported past catches, then set catches at a level that will allow the stock to rebuild, taking into account precautionary principles.
- Develop and implement a strategy to address the impacts of SBT fisheries on ecologically related species, including collection and sharing of data between CCSBT members and Secretariats of other RFMOs.

##### *Data collection and sharing*

- Focus effort on improving data collection and reporting through full and urgent implementation of the conservation and management measures adopted by the CCSBT at its annual meeting in 2006.
- Pursue opportunities to harmonise data collection and sharing with the other four tuna RFMOs.
- Ensure clear standards are set for the level of detail and type of data provided by members, so the science process has the information it requires (including provision of data that meets UNFSA minimum requirements; commercial confidentiality should no longer limit access to data within the CCSBT).

*Quality and provision of scientific advice*

- Maintain the structure of the Extended Scientific Committee, including the independent chairs and advisory panel, but review the number and skill sets of independent experts required in support of the scientific process.
- Consider the balance of effort between SBT and ecologically related species.
- Adopt and implement measures to minimise pollution, waste, discards or catch by lost and abandoned gear.

*Adoption of conservation and management measures*

- Continue to make conservation and management measures that are consistent with scientific advice from the Extended Scientific Committee.
- Develop a strategic plan and management plan to implement minimum standards for the fishery.

*Capacity management*

- Discuss with Indonesia the capacity for temporal and spatial closures in the SBT spawning ground.
- Implement the recommendations set forth in the FAO International Plan of Action on the management of fishing capacity.

*Fishing allocations and opportunities*

- Once long term allocations are finalised among members, including the CCSBT 1 MoU, consider moving to national allocations based on alternative principles, such as proportional allocations, rather than set tonnages.

*Compliance and enforcement*

*Flag state measures*

- All members and cooperating non-members should continue to take all necessary actions to ensure compliance with conservation and management measures adopted by the CCSBT.
- Institute promptly an integrated VMS system.

*Port state measures*

- When considering implementation of any port state measure, the CCSBT should bear in mind the need to avoid duplication of effort, and consider the 'FAO technical consultation on port state measures'.
- Adopt port state measures designed to prevent the landing and transshipment of illegal, unreported and unregulated SBT catches – including by vessels on the CCSBT authorised vessel list.

*Monitoring, control and surveillance*

- Cooperate with other tuna RFMOs to optimise harmonisation, improve global effectiveness, and avoid duplication of work.
- Prioritise the development of MCS in the context of a compliance plan.
- Develop effective measures relating to transshipment, a regional observer programme, and high seas boarding and inspection (as set forth in the UNFSA).

*Follow up on infringements*

- As a minimum, establish agreed rules on the treatment of overcatch (requirement of payback).

- Ideally, establish a range of penalties in relation to all conservation measures.

*Cooperative mechanisms to detect and deter non-compliance*

- All members and cooperating non-members should submit their national reports to the CCSBT.
- Allocate sufficient time to the Compliance Committee and the Extended Commission to allow them to complete both routine and development work each year.

*Market related measures*

- Implement a CDS as a matter of urgency.
- Pending implementation of a CDS, all members and cooperating non-members should be required to implement the TIS.
- Monitor all market and port states and encourage compliance with CCSBT monitoring and trade measures.

*Decision-making and dispute resolution*

*Decision making*

- Consider devolving some day to day operational decision making to the Chair or the Executive Secretary (by the unanimous decision of the Commission).

*Dispute settlement*

- Note the dispute settlement rules established under the UNFSA that may make it unnecessary to amend the Convention to achieve a compulsory and binding regime for the settlement of disputes.

*International cooperation*

*Transparency*

- Improve openness by better publication of the rules for observers (e.g. placing information on the CCSBT website).
- Consider revising current rules and procedures for observers, since they appear to create an unduly restrictive process that is not in line with other tuna RFMOs (or Article 12(2) of the UNFSA).

*Cooperation with other RFMOs*

- Make working more closely with and harmonising measures with other RFMOs a priority area (including on ERS mitigation, impacts of fishing on the environment, data collection, and combating IUU fishing).

*Financial and administrative issues*

*Availability of resources for RFMO activities*

- Consider establishing a position at the Secretariat to provide policy and fisheries management advice.
- Provide the necessary resources to the Commission to implement agreed measures (e.g. the CDS).

*Efficiency and cost-effectiveness*

- If the CCSBT has not always received full and timely payment of member financial contributions, discuss what could be done to prevent the problem in the future.

**SWOT analysis**

The following SWOT analysis outlines the Strengths, Weaknesses, Opportunities and Threats that the Commission may face in achieving its objective. In relation to the opportunities and threats, these include both potential and actual outcomes that may occur. The strategic plan allows strategies to be developed to work towards the opportunities while avoiding threats that are identified as high risk.

The SWOT analysis gives an indication of both internal and external factors that need to be addressed in the goals and strategies outlined below. The strengths, opportunities, and threats sections, in particular, have helped identify areas outside the scope of the performance review where further effort by the Commission may be beneficial.

***Key challenges***

Taking into account the wide range of recommendations made by the performance reviews of the CCSBT, and the other strategic issues identified above, the following key challenges can be identified:

- To provide for the rebuild of the SBT fishery to the level that can sustain maximum sustainable yields (stock re-building);
- To ensure all catches are accounted for within national allocations, and unreported catches are prevented (compliance); and
- To balance the competing demands of those who harvest SBT against the biological demands of stock rebuilding (TAC setting and allocation)

<b>Objective: to ensure, through appropriate management, the conservation and optimum utilisation of southern bluefin tuna</b>	
<b>STRENGTHS</b>	<b>WEAKNESSES</b>
<ul style="list-style-type: none"> <li>- Commission already incorporates almost all fishing effort for SBT</li> <li>- well-regarded model for provision of science advice</li> <li>- decision-making components established (including compliance committee, scientific committee, annual meeting, centralised Secretariat)</li> <li>- coordination with other regional fisheries management organisations (RFMOs)</li> <li>- Agreements reached on basic monitoring, control and surveillance (MCS) components (e.g. catch documentation)</li> <li>- Competency for all areas in which SBT found</li> <li>- agreed mechanism for controlling fishing for SBT (global Total Allowable Catch)</li> <li>- formation of a strategy and fisheries management working group to develop fisheries management options and advice for the Commission</li> </ul>	<ul style="list-style-type: none"> <li>- currently SBT stock at around 10% or less of virgin spawning stock biomass</li> <li>- history of failure to decide on and implement key management measures (e.g. TACs)</li> <li>- information base for stock assessment is poor</li> <li>- objective of Convention relates only to single species (SBT)</li> <li>- approach to controlling fishery does not address potential over-capacity issues</li> <li>- Members have not always met their obligations under the Convention, including implementing agreed measures</li> <li>- application of precautionary principle not explicit</li> <li>- commercial imperatives sometimes override the obligations of member states to cooperatively manage the stock</li> <li>- no specific provisions in the Convention for developing countries</li> </ul>
<b>OPPORTUNITIES</b>	<b>THREATS</b>
<ul style="list-style-type: none"> <li>- increased value (economic, catch per unit effort, social) from stock at the biomass that supports maximum sustainable yields</li> <li>- harmonisation with other RFMOs to increase efficiencies and improve management</li> <li>- taking advantage of developing concepts of best practice for fisheries management including for tuna RFMOs</li> <li>- developing innovative measures to allow more efficient fishing</li> <li>- opportunity to incorporate modern standards of fisheries management (e.g. precautionary principle, ecosystem approach) through development and implementation of management procedure</li> </ul>	<ul style="list-style-type: none"> <li>- increased illegal fishing, including by non-members</li> <li>- failure of Commission to follow scientific advice</li> <li>- disruption to industry caused by stock collapse</li> <li>- international community condemnation over failure to fulfil mandate</li> <li>- consumer resistance to poorly managed stocks</li> <li>- CITES listing (trade prohibitions)</li> <li>- continuation of catch anomalies</li> </ul>

## 2. Objective, vision, and goals

This strategic plan sets out the objective of the Commission (as outlined in the Convention text). The plan also establishes a common vision for how members would like to see the Commission in the future. Components of that vision include the state of the southern bluefin tuna stock; how the Commission operates to effectively manage the stock; and how members are implementing their obligations and benefiting from their successful management of the stock. Each of these components is associated with specific **goals** – the desired future state of the Commission – and **strategies** – the suggested approach to achieving the desired future state.

### *Convention objective*

The objective of the Convention for the Conservation of Southern Bluefin Tuna is to ensure, through appropriate management, the conservation and optimum utilisation of southern bluefin tuna.

### *Vision and goals*

#### **A. Management of SBT**

Southern bluefin tuna stocks are managed at a biomass level that supports the maximum sustainable yield, and the risks of fishing for SBT are mitigated

This category includes strategies concerning stock rebuilding, allocation, ecologically related species.

#### **B. Operation/Administration of the Commission and Secretariat**

The Commission is operating effectively and efficiently, to responsibly manage fishing for SBT

This category includes strategies for effective and efficient operation of Commission, its subsidiary bodies and Secretariat, including harmonization with other RFMOs.

#### **C. Participation and implementation by Members, including Compliance**

Members are actively participating in management of SBT through the Commission, and implementing its decisions

This category includes strategies concerning MCS, sanctions, assistance to developing countries.



<b>A. Goals concerning management of SBT</b>	
<b>Goals</b>	<b>Strategies</b>
<b>1. Re-building SBT</b>	
<p>1.1 Stock is at a biomass level that supports the MSY</p> <p><i>Priority: Very High</i></p>	<p>(i) Adopt an interim rebuilding target reference point, with timeframe and desired probabilities</p> <p>(ii) Adopt a target biomass of achieving BMSY, with timeframe and desired probabilities</p> <ul style="list-style-type: none"> <li>▪ Confirm Commission's target for SBT stock and adopt an interim rebuilding target reference point (e.g. 20% of the original spawning biomass) (annual meeting October 2009)</li> <li>▪ Develop goal for timeframe for rebuilding SBT stock (at 2009 annual meeting, based on report of the SC)</li> <li>▪ Agree on desirable probability associated with meeting rebuild target (at 2009 annual meeting, based on report of the SC)</li> </ul> <p>(iii) Set limits below which stock size should not be allowed to fall, and strategies for managing if limits are breached</p> <ul style="list-style-type: none"> <li>▪ at 2010 annual meeting</li> </ul>
<b>2. Sound scientific basis for setting TAC</b>	
<p>2.1 A management procedure is used to provide guidance on TAC setting</p> <p><i>Priority: High</i></p>	<p>(i) Task the Scientific Committee to review management procedure to ensure it will achieve rebuild targets and timeframes</p> <ul style="list-style-type: none"> <li>▪ Review parameters and decision rules for candidate Management Procedures (MPs) to ensure they will contribute to meeting management objectives (Commission meeting 2009)</li> <li>▪ Develop candidate MPs and adopt preferred candidate (2010)</li> </ul> <p>(ii) Use MP as input to setting global TAC (2011 onwards)</p>
<b>3. Quality and provision of scientific advice</b>	
<p>3.1 Accurate verified data is provided to the Scientific Committee and Commission in a timely manner</p> <p><i>Priority: High</i></p>	<p>(i) Reinforce the role of the Compliance Committee so that the Commission can obtain accurate data on all fisheries</p> <ul style="list-style-type: none"> <li>▪ See also goal 8 (monitoring, control and surveillance)</li> </ul> <p>(ii) Adoption and implementation of common standard/procedure for data verification</p> <ul style="list-style-type: none"> <li>▪ See also goal 8 (monitoring, control and surveillance)</li> </ul> <p>(iii) Set rules for commercially confidential data (e.g. operational catch and effort data)</p> <ul style="list-style-type: none"> <li>▪ Set confidentiality rules and other relevant rules (i.e. usage, ownership)</li> <li>▪ Agree on data provision rules that ensure Members report accurate and complete data on all sources of mortality for SBT.</li> </ul> <p>(iv) MCS strategy (see below)</p>

<p>3.2 Science process provides best available independent advice for management decisions</p> <p><b>Priority: Medium</b></p>	<p>(i) Maintain the independent chairs and advisory panel for the scientific process, but periodically review the number and skill sets of independent experts required</p> <p>(ii) Develop a CCSBT research plan including Member-funded, collaborative and CCSBT-funded projects (if any)</p> <ul style="list-style-type: none"> <li>▪ Implement necessary scientific research by Commission and/or Members (e.g. CCSBT tagging program)</li> </ul>
<p><b>4. Ecologically related species</b></p>	
<p>4.1 Risks to ecologically related species caused by fishing for SBT are identified and appropriately managed</p> <p><b>Priority: Medium</b></p>	<p>(i) Implement the Recommendation to Mitigate the Impact on ERS of fishing for SBT, including collection and reporting of data on ERS (para 3), implementation of mitigation measures (para 2) and assessment of the risks caused by fishing for SBT (para 7) in each fishery</p> <ul style="list-style-type: none"> <li>▪ All Members implement the Recommendation to Mitigate the Impact on ERS of Fishing for SBT</li> <li>▪ Review the implementation of the Recommendation on ERS</li> <li>▪ Agree on data provision requirements for ERS that ensure full reporting of bycatch and mitigation measures used in each fishery; this could occur through other RFMOs (e.g. WCPFC, IOTC) if they have appropriate protocols in place for ERS data reporting.</li> <li>▪ Assess how well the mitigation measures adopted by other area-based RFMOs mitigate the risks caused by fishing</li> <li>▪ Where necessary, identify and adopt additional mitigation measures to manage risk taking into account the coordination and harmonization with other RFMOs</li> </ul> <p>(ii) Coordination and harmonization with area-based RFMOs, including on data reporting (see above)</p>
<p>4.2 Predator and prey species which may affect the condition of the SBT stock are monitored</p> <p><b>Priority: Medium</b></p>	<p>(i) Instruct the ERSWG to monitor predator and prey species which may affect the condition of the SBT stock and report its findings to the Commission</p>
<p><b>5. Allocation</b></p>	
<p>5.1 The global TAC is allocated amongst members, including new members, in accordance with Article 8(4) of the Convention</p> <p><b>Priority: Medium/high</b></p>	<p>(i) Implement existing decisions of the CCSBT that impact upon member allocations</p> <p>(ii) Establish principles for allocation to members, following Article 8(4) of the Convention</p> <ul style="list-style-type: none"> <li>▪ Develop options (based on Convention text) for long term allocation arrangements for all Members, including new members, and apply to TAC increases or decreases</li> </ul>

<b>6 Flexible management arrangements</b>	
<p>6.1 The SBT resource is harvested efficiently, and members and cooperating non-members have incentives to comply with TACs</p> <p><b>Priority:</b> <i>Low/Medium</i></p>	<p>(i) In the longer term, implement flexible management arrangements such as quota trading and under and over fishing rules</p> <ul style="list-style-type: none"> <li>▪ Develop a framework to provide for underfishing and respond to low levels of overfishing</li> <li>▪ Develop a framework for quota trading between members and cooperating non-members; this might be contingent on stock size reaching an agreed level</li> <li>▪ Decide on and implement framework</li> </ul>
<p>6.2 SBT fishing capacity is commensurate with fishing opportunities</p> <p><b>Priority:</b> <i>Low/Medium</i></p>	<p>(i) Assess capacity in the fishery in relation to available catches</p> <ul style="list-style-type: none"> <li>▪ Flag state/fishing entity self assessment of capacity with respect to national allocations</li> <li>▪ Flag state/fishing entity to take corrective action if required</li> <li>▪ Develop proposal for a CCSBT active vessel list to be managed by the Secretariat</li> <li>▪ Assess threats to SBT from over capacity in other fleets</li> <li>▪ International advocacy for capacity constraint/management</li> </ul>
<p>6.3 Members are able to optimise the value they obtain from harvesting SBT</p> <p><b>Priority:</b> <i>Low</i></p>	<p>(i) Analysis of maximum economic yield (MEY, which occurs at the catch or effort level that maximises profits for the fishery as a whole, while recognising the different harvest strategies of each member; in the context of current stock status this would be a long term goal)</p> <p>(ii) Evaluation of harvest strategies</p> <ul style="list-style-type: none"> <li>▪ Evaluate alternative harvest strategies to optimise returns from the SBT stock including the adoption of maximum economic yield as the rebuilding reference point</li> <li>▪ Distribute benefits of yield increases once stock is rebuilt</li> </ul>

<b>B. Goals concerning Operation and Administration of the Commission and Secretariat</b>	
<b>Goals</b>	<b>Strategies</b>
<b>7. Operation of the Commission</b>	
<p>7.1 The Commission is running effectively and efficiently</p> <p><b>Priority:</b> <i>High</i></p>	<p>(i) Streamline Commission processes</p> <ul style="list-style-type: none"> <li>▪ Identify ways to streamline Commission processes (including annual and subsidiary meetings)</li> </ul> <p>(ii) Deepen the involvement of chairperson and vice-chairperson</p> <ul style="list-style-type: none"> <li>▪ Consider appointing Chairperson and vice-chairperson for a period of two years with the opportunity for a further 2 years, but maintain the rotation of meeting</li> </ul>

	<p>venue</p> <p>(iii) Coordinate services amongst regional fisheries management organisations (e.g. transshipment management, management of ERS)</p> <ul style="list-style-type: none"> <li>▪ Instruct the Secretariat to identify opportunities for services to be coordinated amongst regional fisheries management organisations and to provide suggestions to the Commission</li> </ul> <p>(iv) Undertake Commission performance reviews periodically to routinely assess opportunities for improvements, including both self-assessment and independent reviews</p> <ul style="list-style-type: none"> <li>▪ Agree on regular reviews of Commission performance (including timeframes, running and funding of the review, criteria (including any changes proposed through the joint tuna RFMO process), involvement of independent experts, and links between review outcomes and the CCSBT strategic plan)</li> </ul>
<p>7.2 The Commission is running in an open and transparent manner</p> <p><i>Priority: Medium</i></p>	<p>(i) Clearly document the reasons for decisions</p> <ul style="list-style-type: none"> <li>▪ Implement a rule that the Commission must clearly document the rationale for decisions, including where they differ from the science advice provided to the Commission</li> </ul> <p>(ii) Continue with open publication of Commission documents in accordance with the Rules of Procedure of CCSBT</p> <p>(iii) Continue to allow access to observers in accordance with the Rules of Procedure of CCSBT</p>
<p>7.3 Modern fisheries management standards (e.g. precautionary principle, ecosystem management) are incorporated into the Commission's decisions</p> <p><i>Priority: Medium</i></p>	<p>(i) Review Convention text (if member/s propose such negotiations) and/or incorporate through decisions of the Commission e.g. in adopting management procedure; measures to manage ERS (noting the latter option may be more efficient)</p> <ul style="list-style-type: none"> <li>▪ Set parameters for the management procedure that ensure the precautionary principle is applied and ecosystem management is incorporated</li> <li>▪ Task the SC with incorporating standards (precautionary, ecosystem) into its advice to the Commission</li> <li>▪ Review decisions of the Commission to ensure standards are incorporated</li> </ul> <p>(ii) Clarify the ongoing role of the Strategy and Fisheries Management Working Group (SFMWG), including to ensure modern fisheries management standards are incorporated into the Commission's decision making.</p> <ul style="list-style-type: none"> <li>▪ Clearly define the on-going role of the SFMWG</li> <li>▪ Include provision in the SFMWG's terms of reference for incorporating modern fisheries management standards into its advice to the Commission</li> </ul>

<b>C. Goals concerning participation and implementation by Members</b>	
<b>Goals</b>	<b>Strategies</b>
<b>8. Monitoring, control, and surveillance</b>	
<p>8.1 Integrated, targeted and cost-effective monitoring, control and surveillance measures are in place to ensure the Commission's goals are met</p> <p><i>Priority: High</i></p>	<p>(i) Implementation by Members of agreed MCS measures</p> <ul style="list-style-type: none"> <li>▪ Develop a checklist of the Commission's conservation and management measures and audit members against the checklist at the compliance committee to obtain accurate data on all fisheries (2009 onwards)</li> <li>▪ Adopt standards and procedures to ensure data integrity (e.g. certain percentage of complete correct documentation accompanying landings and export/ domestic sales; certain percentage of inspection) (2009 or 2010 annual meeting)</li> </ul> <p>(ii) Develop and implement an MCS strategy</p> <ul style="list-style-type: none"> <li>▪ Assess the necessity of additional MCS measures and/or improvement of agreed MCS measures to meet Commission objectives (e.g. eliminate unreported catch and have accurate verified data) (at 2010 annual meeting)</li> <li>▪ Identify any gaps between MCS measures in place and any improvements or additional measures required</li> <li>▪ Develop a plan for implementing any changes needed</li> </ul>
<b>9. Members' obligations</b>	
<p>9.1 All Members comply with rules of CCSBT</p> <p><i>Priority: High</i></p>	<p>(i) Routinely audit members' implementation, enforcement, and compliance with conservation and management measures and international obligations as they relate to CCSBT (e.g. UN Fishstocks Agreement)</p> <ul style="list-style-type: none"> <li>▪ See above (8.1)</li> </ul> <p>(ii) Establish fair, transparent and non-discriminatory procedures for penalties (e.g. payback of overcatch, quota reduction) and incentives to promote compliance</p>
<b>10. Supporting developing countries</b>	
<p>10.1 Developing country members and cooperating non-members are able to comply with the Commission's management measures and other requirements</p> <p><i>Priority: Medium</i></p>	<p>(i) Develop programme to assist developing countries with Commission requirements</p> <ul style="list-style-type: none"> <li>▪ Work with developing country members and cooperating non-members to identify areas where assistance would be beneficial to ensure they meet obligations under Commission decisions</li> <li>▪ Identify ways in which assistance may be provided (e.g. up-skilling, secondments, workshops etc)</li> <li>▪ Develop and implement a programme to assist developing countries with Commission requirements</li> </ul>

### 3. Proposed action plan

Short term priorities		Medium term priorities		Longer term priorities
2009/2010	2011	2012	2013	2014+ +
<b>A. Strategy concerning management of SBT</b>				
<p><b>1.1 Develop a rebuild strategy (2009/10)</b></p> <p><b>2.1 Adopt management procedure (2009/2010/2011)</b> (see also 7.3(i) – incorporate modern fisheries management standards in decisions e.g. use of precautionary principle in MP)</p> <p><b>3.1(iii) Ensure accurate verified data</b> Set rules and other relevant rules (i.e. usage, ownership) for commercially confidential data (e.g. operational catch and effort data)</p> <p><b>4.1(i) Identify and manage risks to ERS</b> - All Members implement the Recommendation to Mitigate the Impact on ERS of Fishing for SBT (from 2009) - Review the implementation</p>	<p><b>4.1(i) Identify and manage risks to ERS</b> Agree on data provision requirements for ERS that ensure full reporting of bycatch and mitigation measures used in each fishery; this could occur through other RFMOs (e.g. WCPFC, IOTC) if they have appropriate protocols in place for ERS data reporting.</p> <p><b>5.1(ii) Develop allocation rules</b> - Develop options (based on Convention text) for long term allocation arrangements for all Members, including new members, and apply to TAC increases or decreases</p>	<p><b>3.2(i) Scientific process provides best available data</b> Review the number and skill sets of independent experts required for the scientific process (on-going – every x years)</p> <p><b>3.2(ii) Scientific process provides best available data</b> Develop and implement CCSBT research plan including Member-funded, collaborative and CCSBT-funded projects (if any)</p> <p><b>6.1(i) Incentives to comply with TACs</b> - Develop a framework to provide for underfishing and respond to low levels of overfishing</p> <p><b>3.1(iii) Ensure accurate verified data</b></p>	<p><b>4.1(i) Identify and manage risks to ERS</b> - Assess how well the mitigation measures adopted by other area-based RFMOs mitigate the risks caused by fishing - Where necessary, identify and adopt additional mitigation measures to manage risk taking into account the coordination and harmonization with other RFMOs</p> <p><b>4.2 Monitor predator and prey species</b> - Instruct the ERSWG to monitor predator and prey species which may affect the condition of the SBT stock and report its findings to the Commission</p> <p><b>6.2 SBT fishing capacity is commensurate with fishing opportunities</b></p>	<p><b>6.1(i) Incentives to comply with TACs</b> - Develop a framework for quota trading between members and cooperating non-members; this might be contingent on stock size reaching an agreed level</p> <p><b>6.3 Optimise the value from harvesting SBT</b> (i) Analysis of maximum economic yield (ii) Evaluation of harvest strategies</p>

<p>of the Recommendation on ERS (annually at CC from 2009)</p> <p><b>4.1(ii) Identify and manage risks to ERS</b> Coordination and harmonization with area-based RFMOs, including on data reporting (ongoing, and incorporating joint tuna RFMO outcomes)</p> <p><b>5.1(i) Implement existing allocation decisions</b> - Implement existing decisions of the CCSBT that impact upon member allocations (2009)</p>		<p>Agree on data provision rules that ensure Members report accurate and complete data on all sources of mortality for SBT.</p>	<ul style="list-style-type: none"> <li>- Flag state/fishing entity self assessment of capacity with respect to national allocations, and corrective action if required</li> <li>- CCSBT active vessel list to be managed by the Secretariat</li> <li>- Assess threats to SBT from over capacity in other fleets, with international advocacy for capacity constraint/management if required</li> </ul>	
<p><b>B. Strategy concerning operation and administration of the Commission and Secretariat</b></p>				
<p><b>7.1(ii) Commission running effectively and efficiently</b> Consider appointing Chairperson and vice-chairperson for a period of two years with the opportunity for a further 2 years, but maintain the rotation of meeting venue</p> <p><b>7.2(i) The Commission is running in an open and transparent manner</b></p>	<p><b>7.3(ii) Incorporate modern fisheries management standards into decisions</b> Clarify the ongoing role of the Strategy and Fisheries Management Working Group (SFMWG)</p> <p><b>7.3(i) Incorporate modern fisheries management standards into decisions</b> Review decisions of the Commission to ensure</p>	<p><b>7.1(iii) Commission running effectively and efficiently</b> Coordinate services amongst RFMOS (e.g. transshipment management, management of ERS)</p>	<p><b>7.1(iv) Commission running effectively and efficiently</b> Periodic performance review (every 5 years)</p>	

<p>Implement a rule that the Commission must clearly document the rationale for decisions, including where they differ from the science advice provided</p> <p><b>7.3(i) Incorporate modern fisheries management standards into decisions</b> Task the SC with incorporating standards (precautionary, ecosystem) into its advice to the Commission</p> <p><b>7.1(i) Commission running effectively and efficiently</b> Identify ways to streamline Commission processes (including annual and subsidiary meetings)</p>	<p>standards are incorporated</p>			
<p><b>C. Strategy concerning participation/implementation by Members</b></p>				
<p><b>8.1(i) Monitoring, control and surveillance</b> Adopt standards and procedures to ensure data integrity</p> <p><b>8.1(ii) Monitoring, control and surveillance</b> Gap analysis of MCS measures in place and those</p>	<p><b>8.1(i), 9.1(i) Audit Members' implementation of Commission decisions and international obligations as they relate to CCSBT</b> Annual reporting to the Compliance Committee</p> <p><b>8.1(ii) Monitoring, control and surveillance</b></p>	<p><b>8.1(i), 9.1(i) Audit Members' implementation of Commission decisions and international obligations as they relate to CCSBT</b> Annual reporting to the Compliance Committee</p> <p><b>8.1(ii) Monitoring, control and surveillance</b></p>	<p><b>8.1(i), 9.1(i) Audit Members' implementation of Commission decisions and international obligations as they relate to CCSBT</b> Annual reporting to the Compliance Committee</p> <p><b>8.1(ii) Monitoring, control and surveillance</b></p>	<p><b>8.1(i), 9.1(i) Audit Members' implementation of Commission decisions and international obligations as they relate to CCSBT</b> Annual reporting to the Compliance Committee</p> <p><b>8.1(ii) Monitoring, control and surveillance</b></p>



<p>needed to meet Commission objectives; identify any additional measures needed</p> <p><b>9.1(ii) All Members comply with rules of CCSBT</b> Establish fair, transparent and non-discriminatory procedures for penalties and incentives to promote compliance</p> <p><b>10.1 Developing countries</b> Work with developing country members and cooperating non-members to identify areas where assistance would be beneficial to ensure obligations are met, and ways in which assistance may be provided</p> <p><b>8.1(i), 9.1(i) Audit Members' implementation of Commission decisions and international obligations as they relate to CCSBT</b> Annual reporting to the Compliance Committee</p>	<p>Implement identified MCS measures (ongoing)</p> <p><b>10.1 Developing countries</b> Develop and implement a programme to assist developing countries with Commission requirements (ongoing)</p>	<p>Implement identified MCS measures (ongoing)</p> <p><b>10.1 Developing countries</b> Develop and implement a programme to assist developing countries with Commission requirements (ongoing)</p>	<p>Implement identified MCS measures (ongoing)</p> <p><b>10.1 Developing countries</b> Develop and implement a programme to assist developing countries with Commission requirements (ongoing)</p>	<p>Implement identified MCS measures (ongoing)</p> <p><b>10.1 Developing countries</b> Develop and implement a programme to assist developing countries with Commission requirements (ongoing)</p>
--	--	--	--	--

## **Attachment 17**

### **New Zealand draft for the CCSBT**

*To be added after Secretariat returns to Canberra (the work plan is still on the meeting server, which has been disconnected and packed for travel)*

Japanese Proposal

**Draft Resolution on Emergency Rule**

The Commission resolves that:

- (1) The Extended Scientific Committee (ESC) shall annually review a recruitment level of that year and report the results to the Commission on a basis of the following four sources of information obtained that year:
  - a. Aerial survey of SBT in the Great Australian Bite
  - b. Trolling survey of small SBT
  - c. Observer data of small SBT catch obtained in longline fisheries
  - d. Monitored purse seine data of small SBT catch transferred to cages
  
- (2) When the ESC reports that the recruitment level that year is significantly lower than the 1999-2002 level, the Commission shall suspend all the fisheries for SBT except for artisanal fishery next year. Members and Cooperating Non-Members shall intensify research activities so that the ESC can conduct further analysis on the recruitment and present recommendations on conservation and management measures.
  
- (3) Based upon the recommendations of the ESC, the Commission shall decide at its next year's meeting appropriate conservation and management measures including possible continuation of suspension or steps to resume fisheries for SBT.