

SENATE LEGAL AND CONSTITUTIONAL LEGISLATION COMMITTEE
AUSTRALIAN FEDERAL POLICE

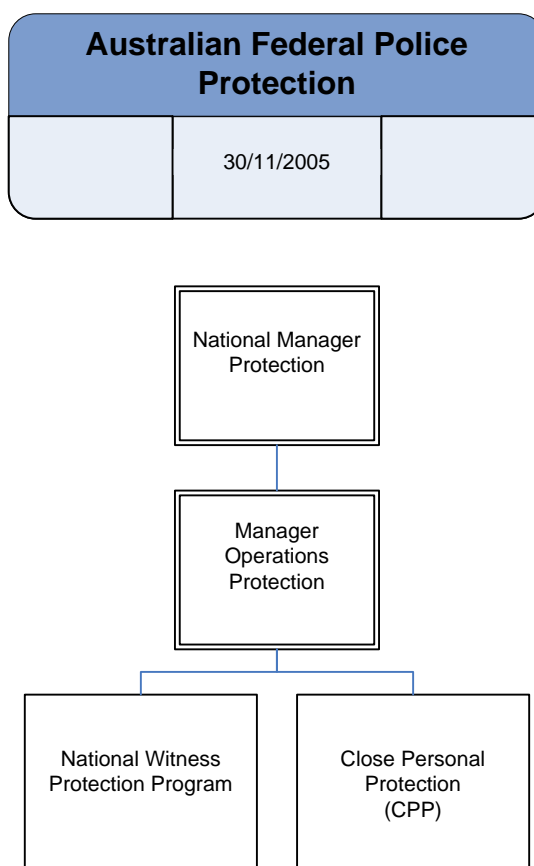
Question No. 271

Senator Ludwig asked the following question at the hearing on 31 October 2005:

- a) Please provide an organisational chart for the Close Personal Protection portfolio and provide the funding that this portfolio received this year, for the previous four years and the projected spending for the next four years.
- b) Could you please provide the funding that each of the following programs receive, including the funding received this year, the funding for the previous four years and the projected funding for the next four years:
- (i) National Witness Protection Program

The answer to the honourable senator's question is as follows:

- a) The Close Personal Protection function is part of the Protection portfolio, headed by the National Manager Protection. Also included in the Protection portfolio are Aviation, Protection Service Operations and Operations Support functions. The following organisational chart depicts the structure of Close Personal Protection.



Question on Notice 243 provided information on the Government funding under the Enhancement of Protective Security services new measure. This measure provided the AFP with the below funding to meet the costs associated with increased security, including CPP services.

	2001-02	2002-03	2003-04	2004-05	2005-06
Funding	\$9.2m	\$27.1m	\$27.4m	\$27.7m	\$27.9m

- b)
 - (i) Funding provided to the National Witness Protection Program cannot be released due to operational sensitivities.