

SENATE STANDING COMMITTEE ON LEGAL AND CONSTITUTIONAL AFFAIRS  
HIGH COURT OF AUSTRALIA

**Question No. 165**

**Senator Ludwig asked the following question at the hearing on 24 May 2007:**

Please provide a summary which demonstrates whether your workload (the number of cases on hand and the number of cases disposed of between both self-represented litigants and litigants who have counsel) has been increasing or decreasing.

**The answer to the honourable senator's question is as follows:**

Applications for special leave to appeal represent the greatest volume of matters filed in the High Court each year. The following tables and graphs (165a-c) compare the number of applications for special leave to appeal filed each year with the number of applications for special leave to appeal decided each year since 2000-01. This information reflects the continuing high volume of applications filed and the significant increase since 2004-05 in the number of applications determined by the Court. This increase in the number of applications determined is explained by the provision, introduced by the *High Court Rules 2004* which commenced on 1 January 2005, for determining some applications for special leave to appeal on the basis of written argument and without a hearing. As a result of the changes to the procedure for determining applications the Court is able to determine more applications for special leave to appeal each year than was the case under the former rules when all applications were listed for hearing.

## HIGH COURT OF AUSTRALIA

### SPECIAL LEAVE APPLICATIONS FILED/DECIDED 2000/01 to 2006/07\* (165.a)

	2000/01	2001/02	2002/03	2003/04	2004/05	2005/06	2006/07*
<b>Special leave applications filed</b>	495	497	605	729	876	720	643
<b>Special leave applications decided</b>	313	353	304	383	617	767	423

\*to 30 April 2007

### SPECIAL LEAVE APPLICATIONS FILED/DECIDED REPRESENTED 2000/01 to 2006/07\* (165.b)

	2000/01	2001/02	2002/03	2003/04	2004/05	2005/06	2006/07*
<b>Special leave applications filed</b>	339	311	360	380	372	307	242
<b>Special leave applications decided</b>	242	255	206	249	349	305	203

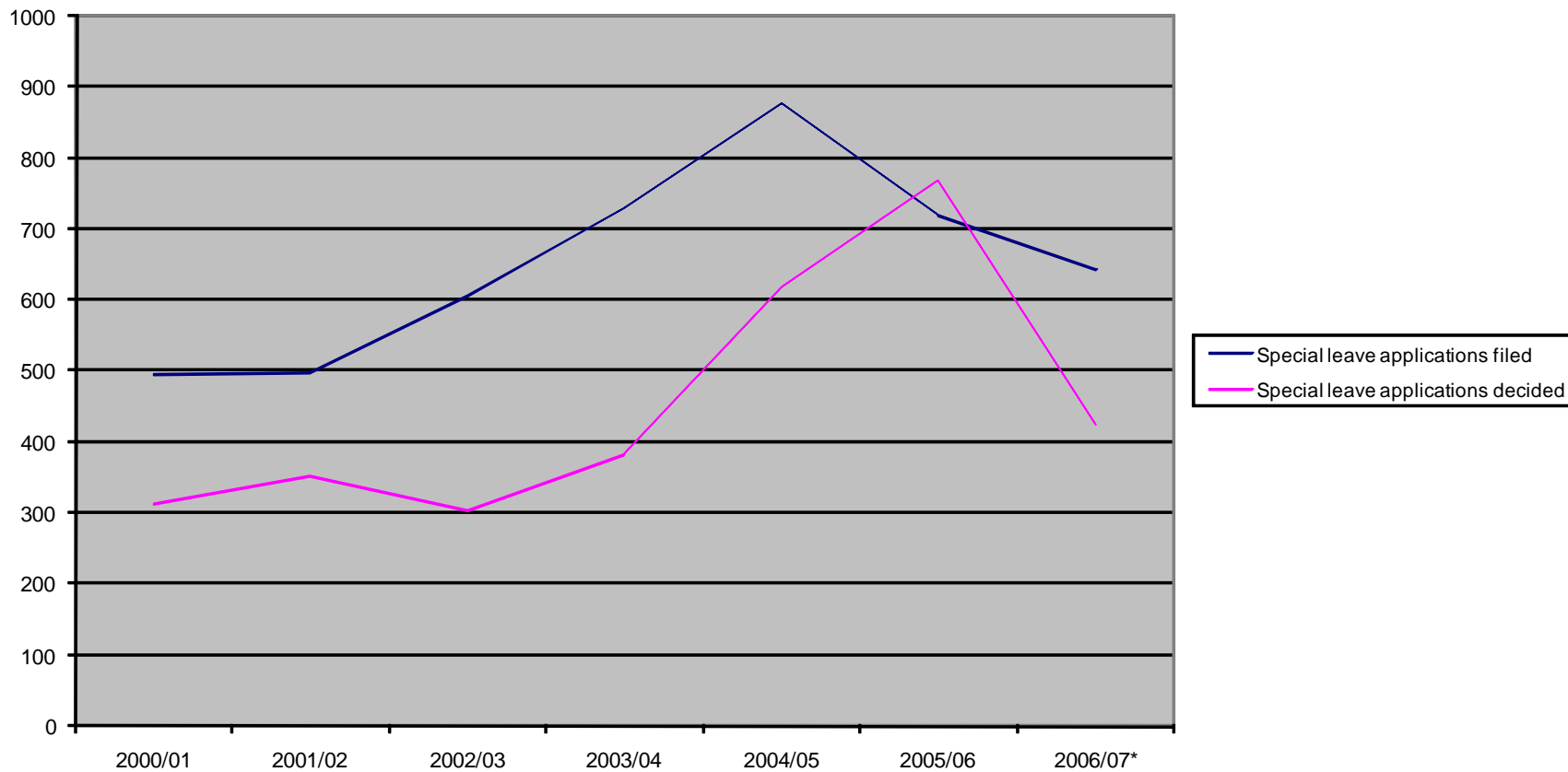
\*to 30 April 2007

### SPECIAL LEAVE APPLICATIONS FILED/DECIDED UNREPRESENTED 2000/01 to 2006/07\* (165.c)

	2000/01	2001/02	2002/03	2003/04	2004/05	2005/06	2006/07*
<b>Special leave applications filed</b>	156	186	245	349	504	413	401
<b>Special leave applications decided</b>	71	98	98	134	268	462	220

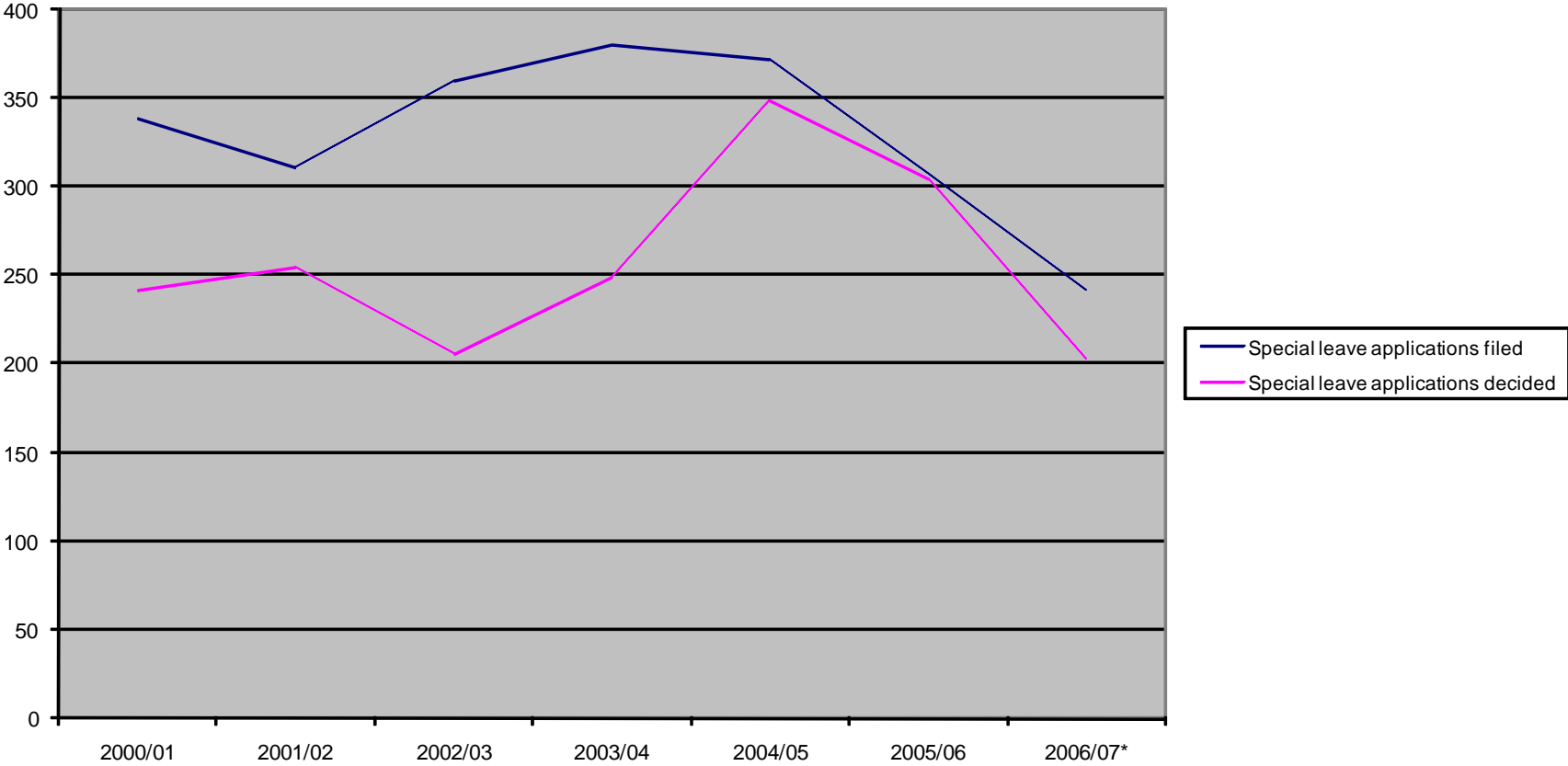
\*to 30 April 2007

**HIGH COURT OF AUSTRALIA  
SPECIAL LEAVE APPLICATIONS FILED/DECIDED  
2000/01 TO 2006/07\* (165.a)**



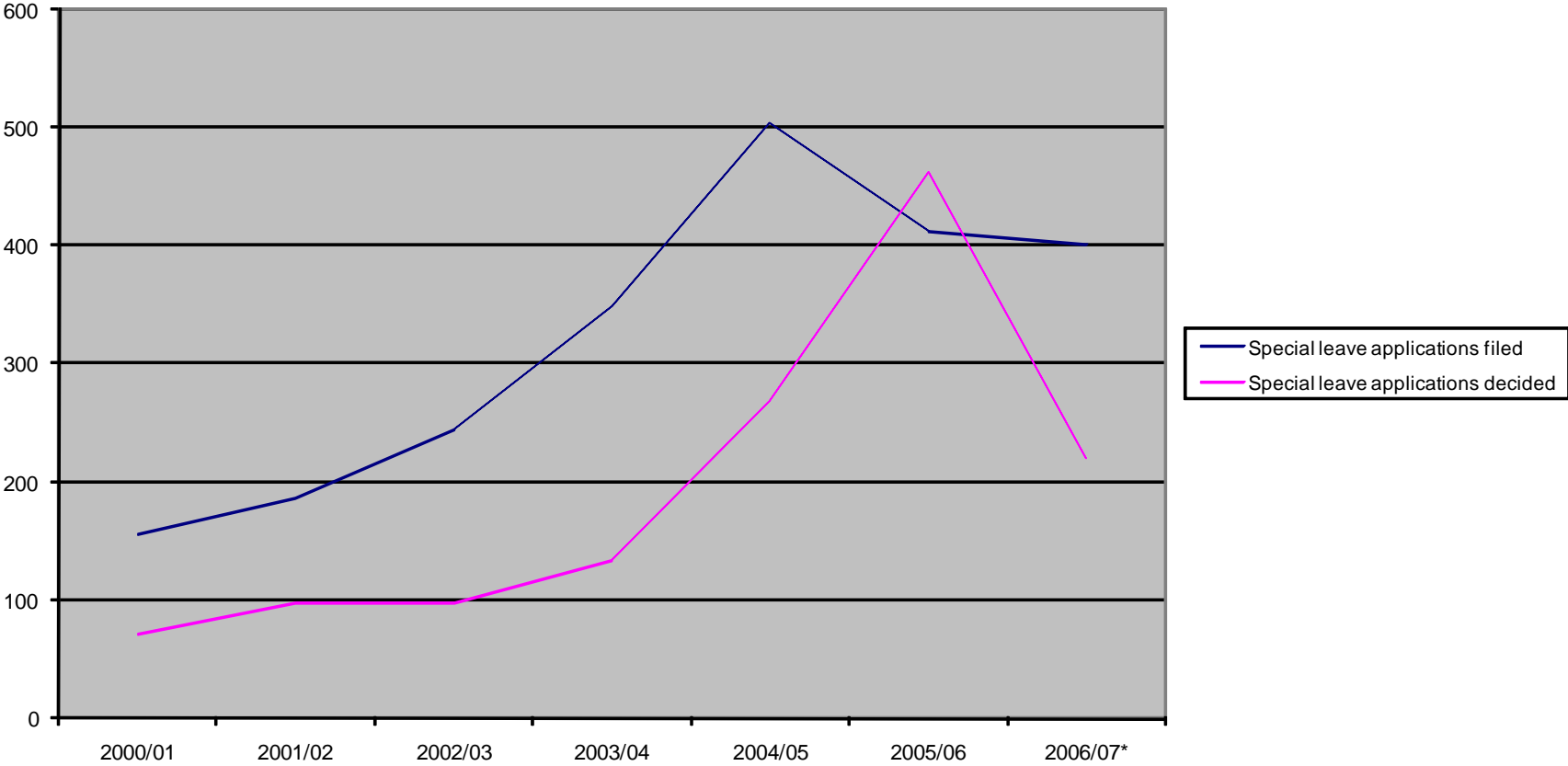
**\*to 30 April 2007**

**HIGH COURT OF AUSTRALIA  
SPECIAL LEAVE APPLICATIONS FILED/DECIDED REPRESENTED  
2000/01 TO 2006/07\* (165.b)**



**\*to 30 April 2007**

**HIGH COURT OF AUSTRALIA  
SPECIAL LEAVE APPLICATIONS FILED/DECIDED UNREPRESENTED  
2000/01 TO 2006/07\* (165.c)**



**\*to 30 April 2007**