

Tabled Document

By: *MR Cornell*

Date: *26/05* *5:40*

BUILDING AND CONSTRUCTION INDUSTRY ROYAL COMMISSION

Expenditure to 23 May 2003

	Actual Expenditure FY 2001/02	Actual Expenditure 1 Jul 2002 - 28 Feb 2003	Total Expenditure to 28 February 2003	Expenditure from 1 March to 23 May 2003	Total Expenditure to 23 May 2003
BCI Royal Commission EXPENSES					
Employees	3,090,755	2,248,427	5,339,182	18,084	5,357,266
Contractors	2,355,728	1,313,408	3,669,136	103,419	3,772,555
Consultants	676,798	897,139	1,573,938	46,390	1,620,328
Legal & Audit expenses	12,138,572	9,444,854	21,583,426	350,753	21,934,179
Document Management	2,345,751	1,518,077	3,863,827	14,509	3,878,336
Information Technology	5,582,316	2,016,544	7,598,860	590,512	8,189,372
Travel	2,438,000	565,397	3,003,397	20,634	3,024,031
Taxi & Motor Vehicle Expenses	344,500	243,195	587,695	25,517	613,212
Security	262,231	121,950	384,181	3,201	387,382
Communications	913,668	424,811	1,338,480	95,492	1,433,972
Stationery & Consumables	340,070	152,454	492,523	3,684	496,207
Other Suppliers	734,945	1,444,594	2,179,539	980,343	3,159,882
Office Accommodation	2,993,550	1,146,444	4,139,994	5,442	4,145,436
Residential Accommodation	314,774	147,508	462,282		462,282
Depreciation & Loss on Disposal	1,133,010	1,516,973	2,649,984	208,020	2,858,004
Total Expenses	35,664,668	23,201,775	58,866,444	2,466,000	61,332,444

THE HIH ROYAL COMMISSION

Expenditure to 31/3/03

Forecast to 31/5/03

	Expenditure to 31/3/03	Forecast to 31/5/03
	\$m	\$m
Legal Services and Support	15.06	15.18
Commissioner & Direct Staff	1.00	1.06
Forensic Accounting & Actuarial	2.84	2.84
Secretariat	2.10	2.20
Media Liaison & Services	0.30	0.30
Travel	0.56	0.59
IT Expenses and Document Management	8.48	8.83
Office Administration and Equipment	1.37	1.40
Accommodation Set-Up	1.47	1.67
Ongoing Accommodation	1.93	2.17
Printing & Editorial Expenses of Report	0.04	0.20
Accommodation - Revenue	0.00	(0.50)
Auction Sale Proceeds	0.00	(0.10)
Report Sales Proceeds	0.00	(0.01)
TOTAL	35.15	35.83

CIVIL JUSTICE DIVISION
HUMAN RIGHTS STAFF LEAVE

1 January – 31 Dec 2002	Department Total	Human Rights Branch
Sick Leave (including workers' compensation)	3.63%	1.53%
Annual Leave	5.85%	3.94%
Miscellaneous Paid Leave	1.00%	0.83%
Long Service Leave	0.79%	0.94%
1 January to 30 April 2003	Department Total	Human Rights Branch
Sick Leave (including workers' compensation)	3.32%	1.36%
Annual Leave	8.72%	3.38%
Miscellaneous Paid Leave	1.62%	0.46%
Long Service Leave	0.43%	0.00%

Senate Legal & Constitutional Affairs
Legislation Committee
Consideration of Budget Estimates 2003-04

Tabled Document

By: *Leahy*

Date: *26/05/03*

b. APPLICATIONS FOR SPECIAL LEAVE FILED

1995/96	Unrepresented	Represented	Total
Civil	53 (19%)	219 (81%)	272
Criminal	23 (21%)	87 (79%)	110
Total	76 (20%)	306 (80%)	382

1996/97	Unrepresented	Represented	Total
Civil	69 (26%)	199 (74%)	268
Criminal	18 (18%)	83 (82%)	101
Total	87 (24%)	282 (76%)	369

1997/98	Unrepresented	Represented	Total
Civil	64 (26%)	181 (74%)	245
Criminal	13 (12%)	100 (88%)	113
Total	77 (22%)	281 (78%)	358

1998/99	Unrepresented	Represented	Total
Civil	79 (26%)	223 (74%)	302
Criminal	21 (20%)	84 (80%)	105
Total	100 (25%)	307 (75%)	407

1999/00	Unrepresented	Represented	Total
Civil	114 (29%)	280 (71%)	394
Criminal	22 (18%)	103 (82%)	125
Total	136 (26%)	383 (74%)	519

2000/01	Unrepresented	Represented	Total
Civil	123(33%)	247(67%)	370
Criminal	39 (31%)	86 (69%)	125
Total	162(33%)	333(67%)	495

2001/02	Unrepresented	Represented	Total
Civil	170 (43%)	223 (57%)	393
Criminal	27 (26%)	77 (74%)	104
Total	197 (40%)	300 (60%)	497

2002/03*	Unrepresented	Represented	Total
Civil	195 (49%)	203 (51%)	398
Criminal	33 (29%)	79 (71%)	112
Total	228 (45%)	282 (55%)	510

3. Special Leave Applications - Civil and Criminal

	Special Leave Applications Decided				TOTAL DECIDED
	Special Leave Refused		Special Leave Granted		
	Represented	Self Represented	Represented	Self Represented	
1992/1993	155	9	48	1	213
1993/1994	207	24	69	2	302
1994/1995	192	38	45	2	277
1995/1996	137	37	55	3	232
1996/1997	164	38	65	1	268
1997/1998	154	59	52	2	267
1998/1999	125	53	63	2	243
1999/2000	234	87	64	2	387
2000/2001	173	70	69	1	313
2001/2002	178	95	77	3	353
2002/2003*	116	67	54	4	241
TOTAL	1835	577	661	23	3096

Special Leave Applications Granted - Results of Subsequent Appeals

Year special leave granted	Represented		Self Represented	
	Special Leave Granted	Appeal Allowed**	Special Leave Granted	Appeal Allowed**
1992/1993	48	30	1	-
1993/1994	69	45	2	2
1994/1995	45	32	2	-
1995/1996	55	29	3	2
1996/1997	65	38	1	1
1997/1998	52	34	2	-
1998/1999	63	45	2	-
1999/2000	64	40	2	2
2000/2001	69	18	1	-
2001/2002	60	2	2	1
2002/2003*	54	3	4	1
TOTAL	661	321	23	10

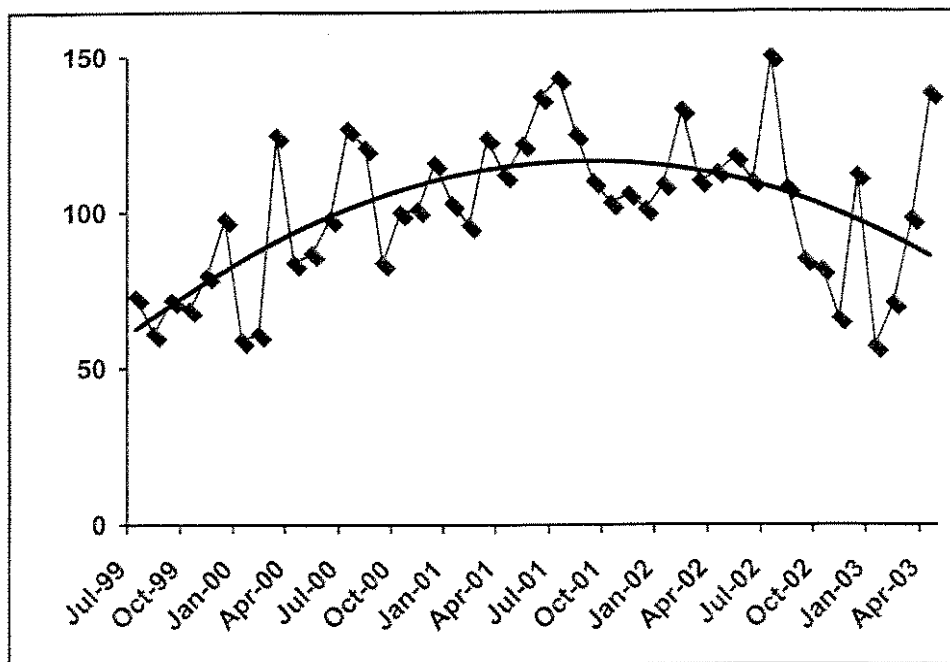
* To 30 April 2003

Migration Matters – Workload Statistics

1. Migration Filings

For the period 1 July 2002 to 30 April 2003, the total number of migration filings has reduced, especially in October and November. See Table 1 below.

Table 1 - Migration cases filed in the Federal Court since July 1999 (including those filed under the Judiciary Act, ADJR Act, and Federal Court Act)



Senate Legal & Constitutional Affairs
Legislation Committee
Consideration of Budget Estimates 2003-04

Tabled Document

By: MANICK COBBY
Date: 27/5 12:10

By month:

Year	Jul	Aug	Sep	Oct	Nov	Dec	Jan	Feb	Mar	Apr	May	Jun	Total
1999-00	73	61	72	69	80	98	59	61	125	84	87	98	967
2000-01	127	121	84	100	101	116	103	96	124	112	122	137	1,343
2001-02	143	125	110	103	106	101	109	133	110	113	118	110	1,381
2002-03	150	108	85	82	66	112	57	71	98	138			967

By registry:

Year	NSW	VIC	QLD	WA	SA	TAS	ACT	NT	Total
1999-00	590	232	9	103	29	-	4	-	967
2000-01	600	367	44	242	85	3	2	-	1,343
2001-02	622	315	31	243	166	-	4	-	1,381
2002-03	541	220	23	99	82	-	2	-	967

In addition to these filings, a number of migration applications (not included above) have been remitted from the High Court in 2002-03 as shown below.

Year	Jul	Aug	Sep	Oct	Nov	Dec	Jan	Feb	Mar	Apr	May	Jun	Total
2002-03			25	-	6	5	10	1	501	67	16		631