

Senate Standing Committee on Finance and Public Administration

ANSWERS TO QUESTIONS ON NOTICE

Finance and Administration Portfolio

Department of Human Services and Agencies

Supplementary Budget Estimates 2006-2007, 31 October, 2006

Question: HS23

Outcome 1, Output 1

Topic: Office of Access Card - Staffing

Hansard Page/Written Question on Notice: F&PA 137

SENATOR MOORE asked on 31/10/2006:

[In relation to staffing for Office of Access Card]

Ms Scott—Would you like an indication of the number of people under each of those headings—is that what you are after?

Senator MOORE—Yes. I take it this is the structure of the units. This is not a body per box?

Ms Hartland—That is correct. That is right. It is the senior structure.

Senator MOORE—So under ‘requirement’ and ‘implementation’, it is branches. Can you just give that to us on notice with how many bodies.

Ms Hartland—Sure.

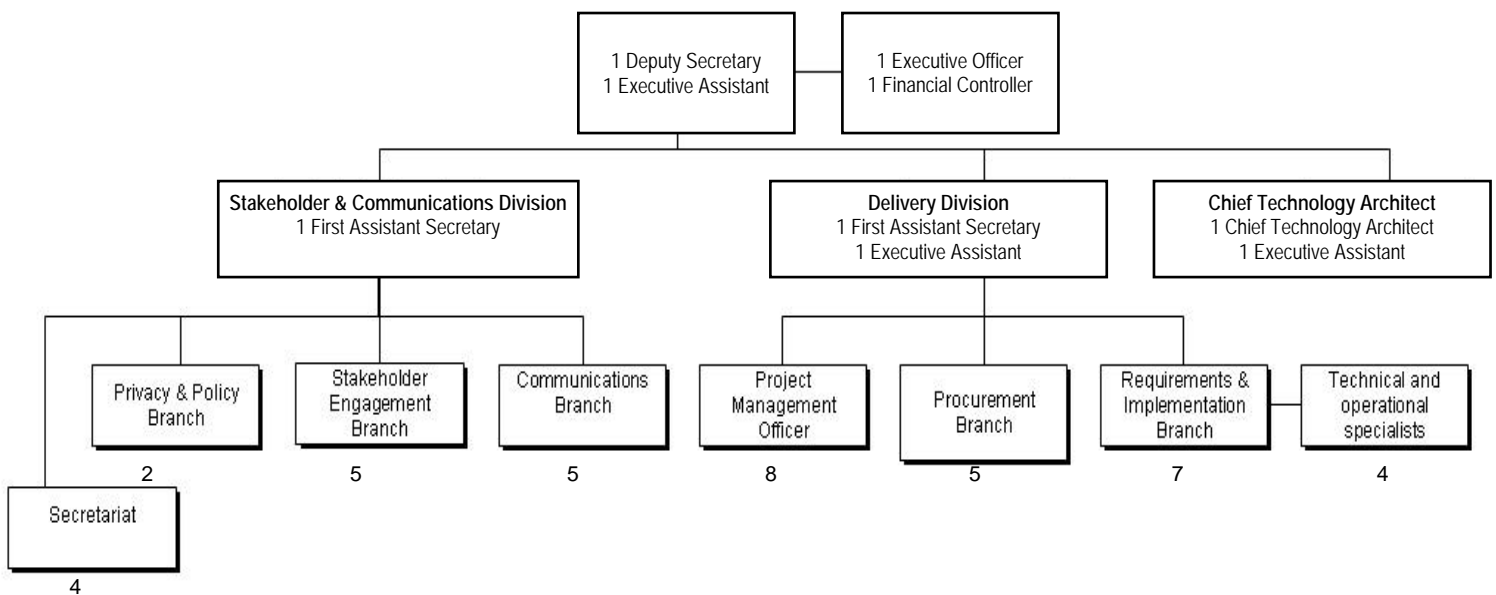
Senator MOORE—And in terms of what levels, in terms of your actual structure. That would be useful.

Answer:

As at 4 December 2006 there are 49 staff in the Office of Access Card. It is anticipated this will increase to 60 staff by the end of this financial year in line with the business plan.

The structure of the Office of Access Card is provided below.

Office of the Access Card Structure



To prepare this answer it has taken approximately 4 hours at an estimated cost of \$226.