



**Parliament of Australia**  
**Parliamentary Budget Office**

**REPORT TO THE SENATE FINANCE AND PUBLIC  
ADMINISTRATION LEGISLATION COMMITTEE ON PBO  
PERFORMANCE AND STAFFING DATA**

**AS AT 17 MAY 2013**

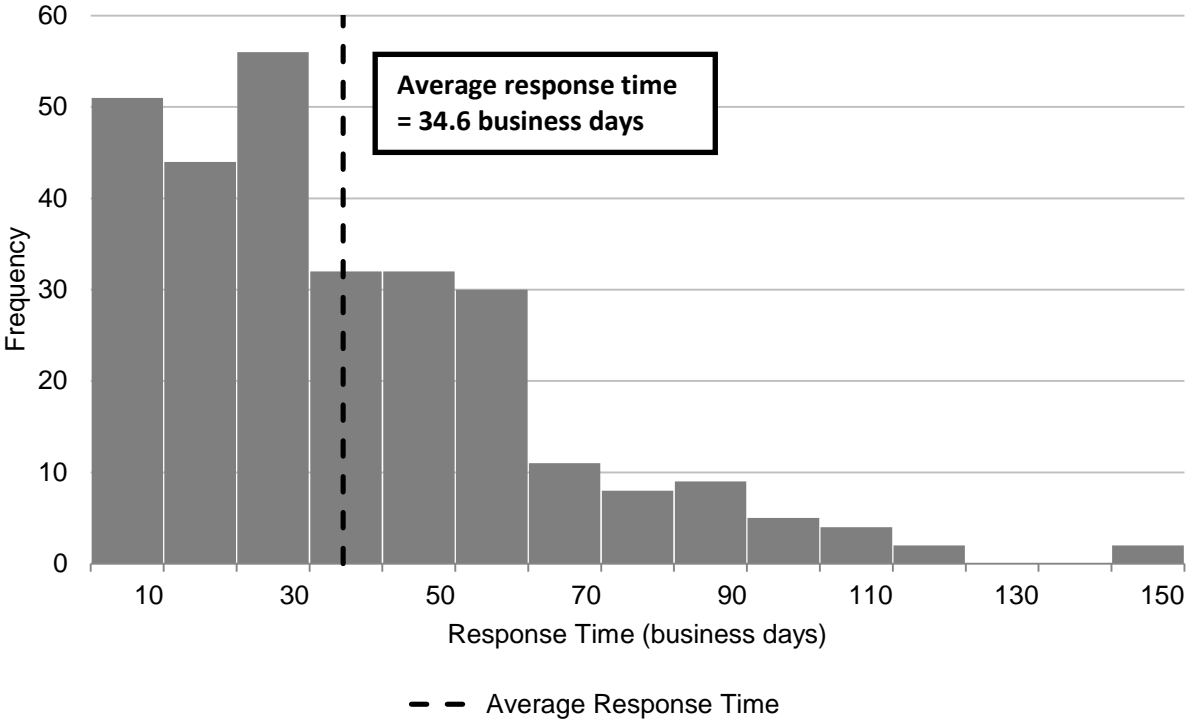
# Requests from Parliamentarians for policy costings, other analyses and information relating to the Budget

**Table 1. Requests from Parliamentarians and PBO responsiveness**

	Date Request Received			All
	2012	2013 Q1	2013 Q2	
<b>Requests Received from Parties</b>				
Total Requests Received	191	67	160	418
Number of Requests Completed	189	59	32	280
Average Time to Completion (business days)	44	20	15	35
Number of Requests Outstanding	2	8	128	138
Average Time Elapsed Since Receipt (business days)	123	45	15	19
<b>Requests Received from Individual Parliamentarians</b>				
Total Requests Received	-	6	1	7
Number of Requests Completed	-	5	1	6
Average Time to Completion (business days)	-	17	3	15
Number of Requests Outstanding	-	1	-	1
Average Time Elapsed Since Receipt (business days)	-	48	-	48

The table above excludes requests that have subsequently been withdrawn.

**Figure 1. Response Times for Completed Requests**



# Requests by PBO for information from Commonwealth bodies

Table 2. PBO information requests and responsiveness of Commonwealth bodies

Date	Requests Sent	Responded <u>By</u> Due Date	Responded <u>After</u> Due Date	Average Timeliness (business days)	Requests Outstanding (and of these # overdue)
2012	85	43 (51 %)	42 (49 %)	3.4 late	0 (0)
2013 Q1	102	35 (37 %)	59 (63 %)	4.1 late	8 (8)
2013 Q2	132	26 (74 %)	9 (26 %)	1.7 early	97 (3)
<b>Total</b>	<b>319</b>	<b>104 (49 %)</b>	<b>110 (51 %)</b>	<b>2.9 late</b>	<b>105 (11)</b>

Figure 2. Commonwealth bodies response time for completed information requests

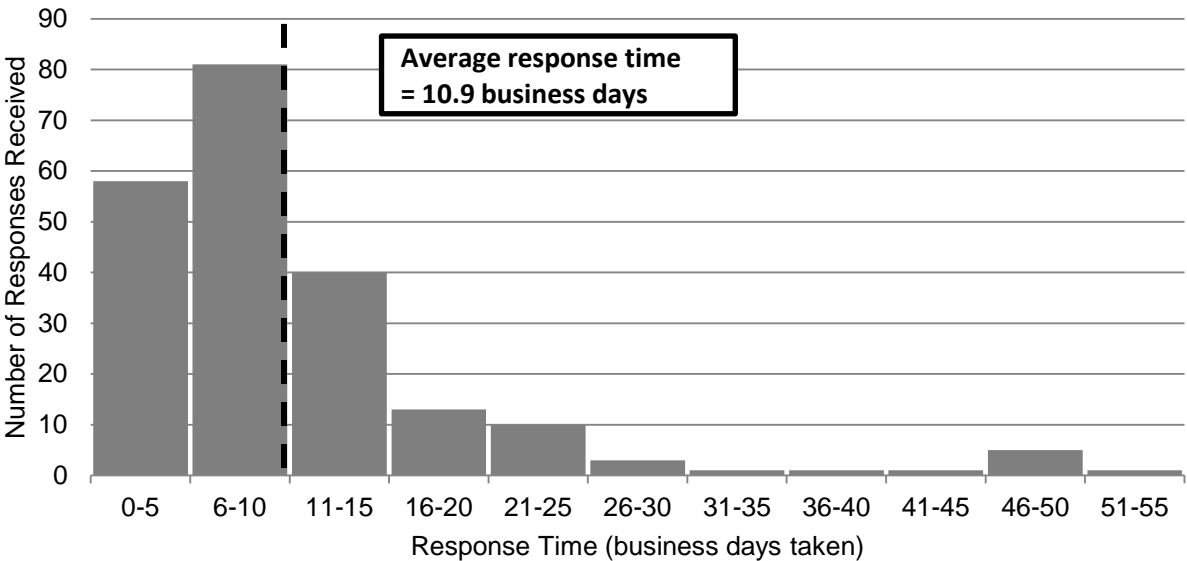
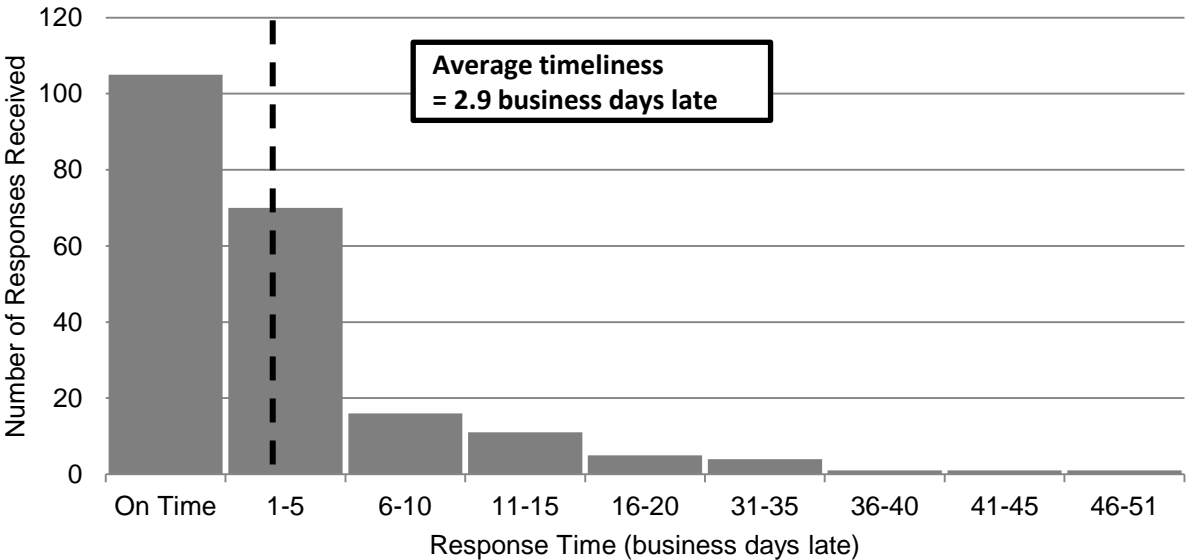
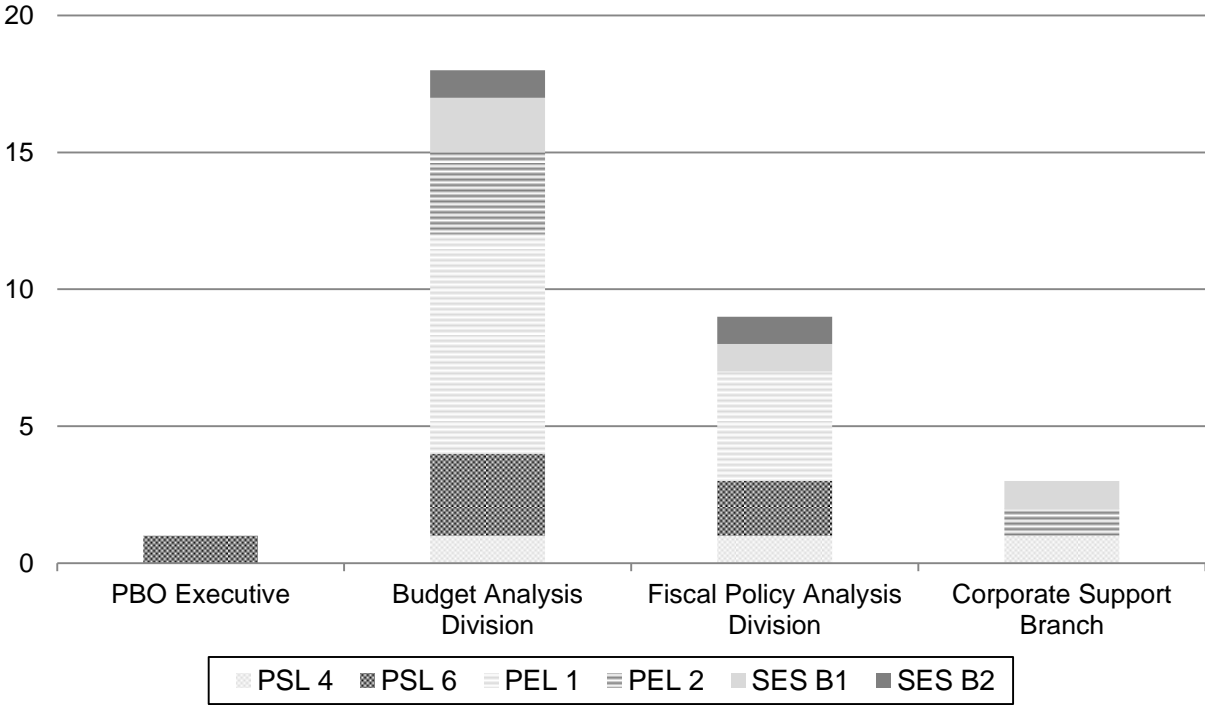


Figure 3. Timeliness of response by Commonwealth bodies to PBO information requests



# PBO permanent staff by function and employment level (excludes the Parliamentary Budget Officer)

Figure 4. PBO staff by function and level



PSL4 – Parliamentary Service Level 4	3
PSL6 – Parliamentary Service Level 6	6
PEL1 – Parliamentary Executive Level 1	12
PEL2 – Parliamentary Executive Level 2	4
SES B1 – Senior Executive Service Band 1	4 (One acting)
SES B2 – Senior Executive Service Band 2	2
<b>Total staff</b>	<b>31</b>