

**ANSWERS TO QUESTIONS ON NOTICE**

**DEPARTMENT OF DEFENCE**

**Budget estimates 2000–2001, 29–30 May 2000**

**QUESTION 69**

SENATOR: Hogg

HANSARD: Written question

In relation to information provided in the response to question 2 from the 3 May 2000 supplementary additional estimates hearing (*Additional Information Received—Defence Portfolio Volume 3*, May 2000):

- a. What has happened to the \$2,120 worth of sketches that were done for the Minister's office that never was?
- b. Could the committee be provided with copies of the sketches?

**RESPONSE**

The sketches are being held in the Department in case of future need. Two of the sketches related not to a possible Minister's office but to the reconfiguration of one office space to accommodate two executive offices. The Minister will occupy the office formally occupied by DepSec Resources and Management. The other sketches related to a possible VIP reception area. Copies of the sketches are attached.



**R1, LEVEL 6, ZONE B - EXISTING PLAN**



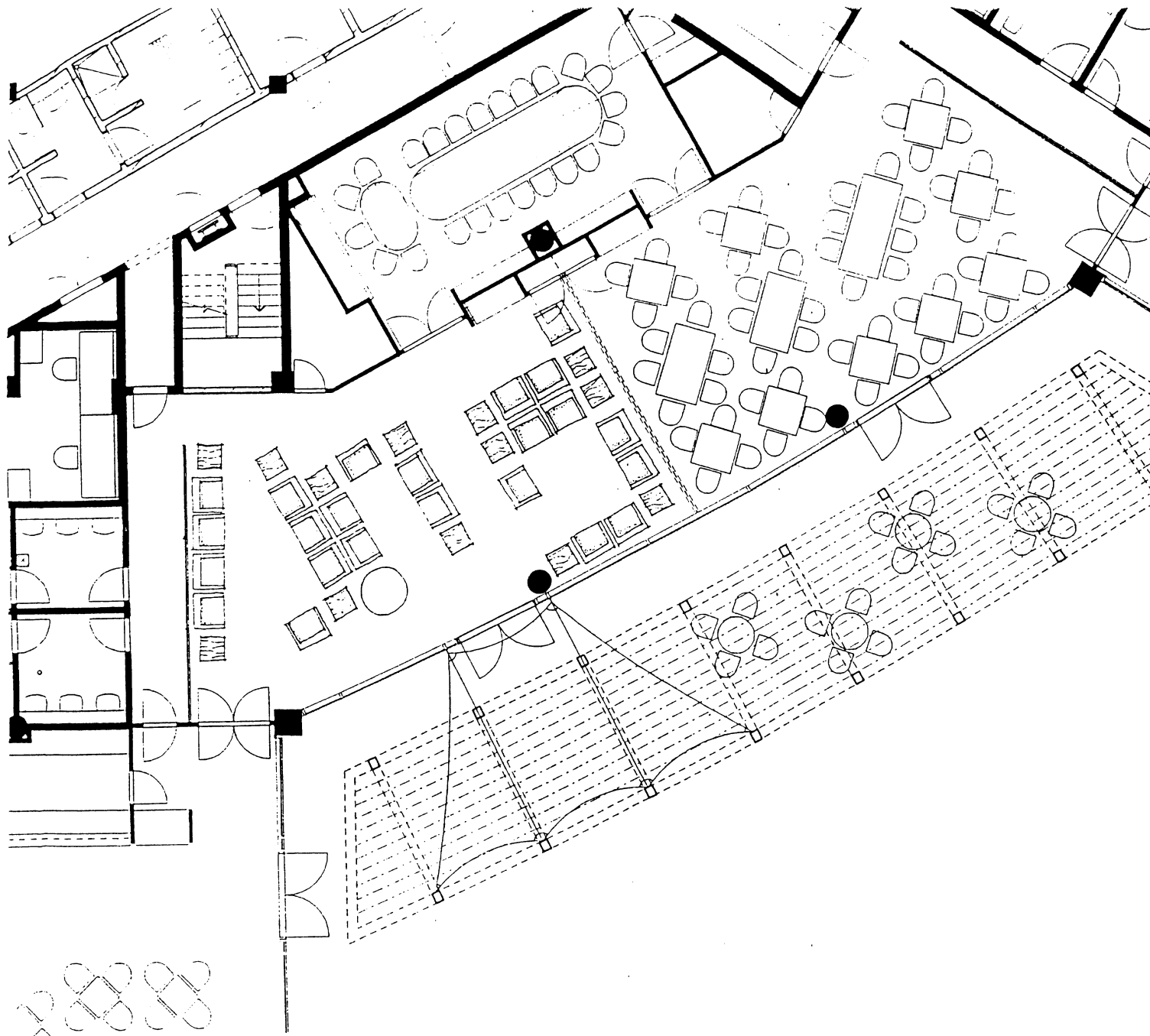


**R 1, LEVEL 6, ZONE B - OPTION ONE**

 Bligh Voller Nield



**R1, LEVEL 6, ZONE B - OPTION TWO**



**OPTION ONE**

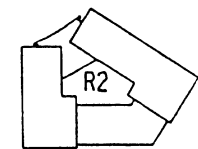
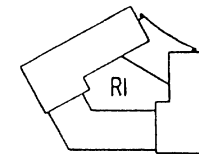
Conference Seating: 23  
 Informal Lounge Seating: 22

**Pros**

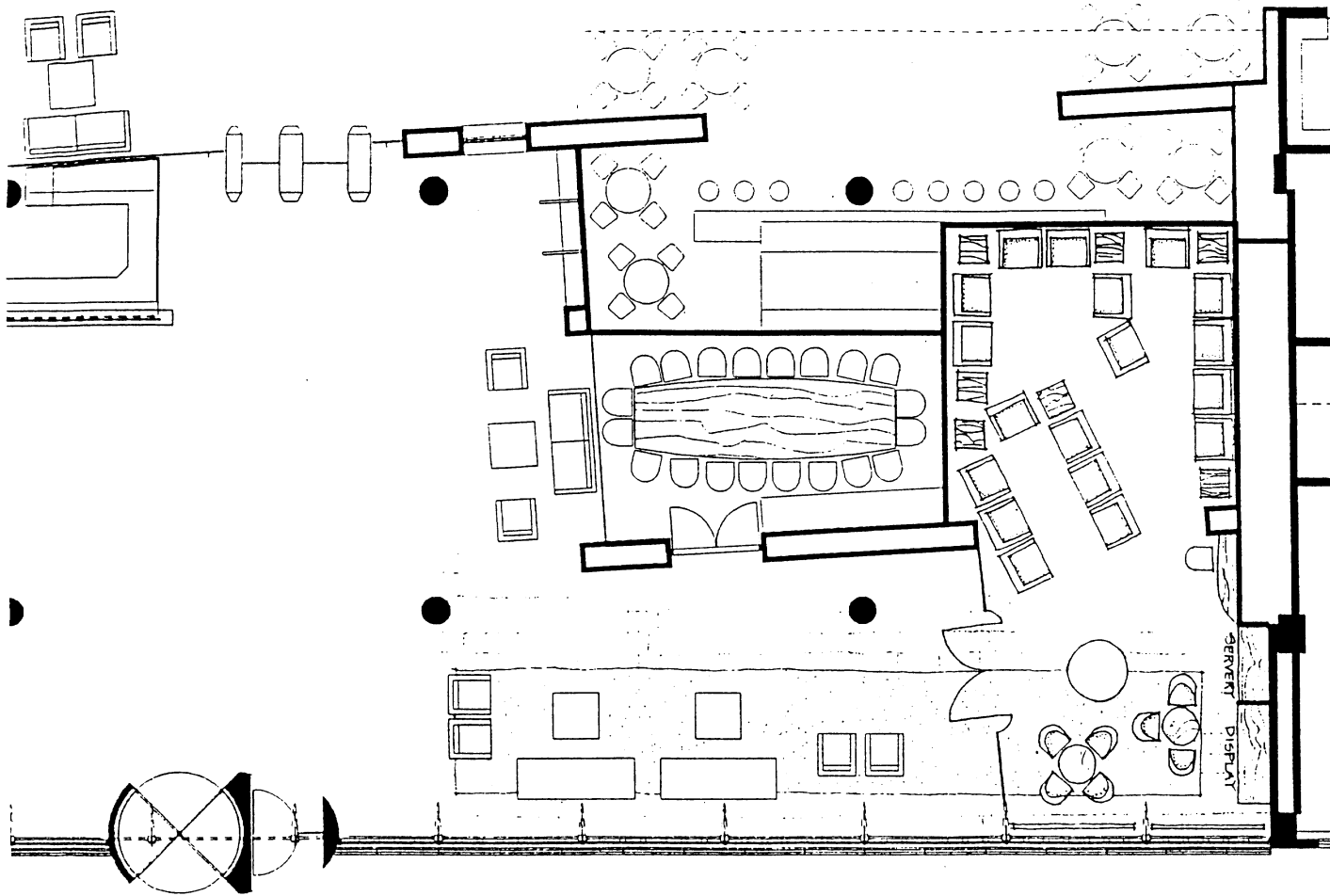
- No construction required
- Expansion into adjacent areas possible
- Catering facilities and staff available
- Designated toilet facilities available
- Existing finishes are of executive quality
- Access available through courtyard or internally

**Cons**

- No external views
- Displaces existing mess facility during functions
- Storage area required for furniture
- Need to access secure area of building
- Not a permanent installation but staff available to reconfigure spaces



**VIP RECEPTION - OPTION ONE**



## OPTION TWO

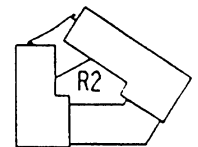
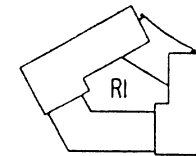
Conference Seating: 20  
 Informal Lounge Seating: 18

### Pros

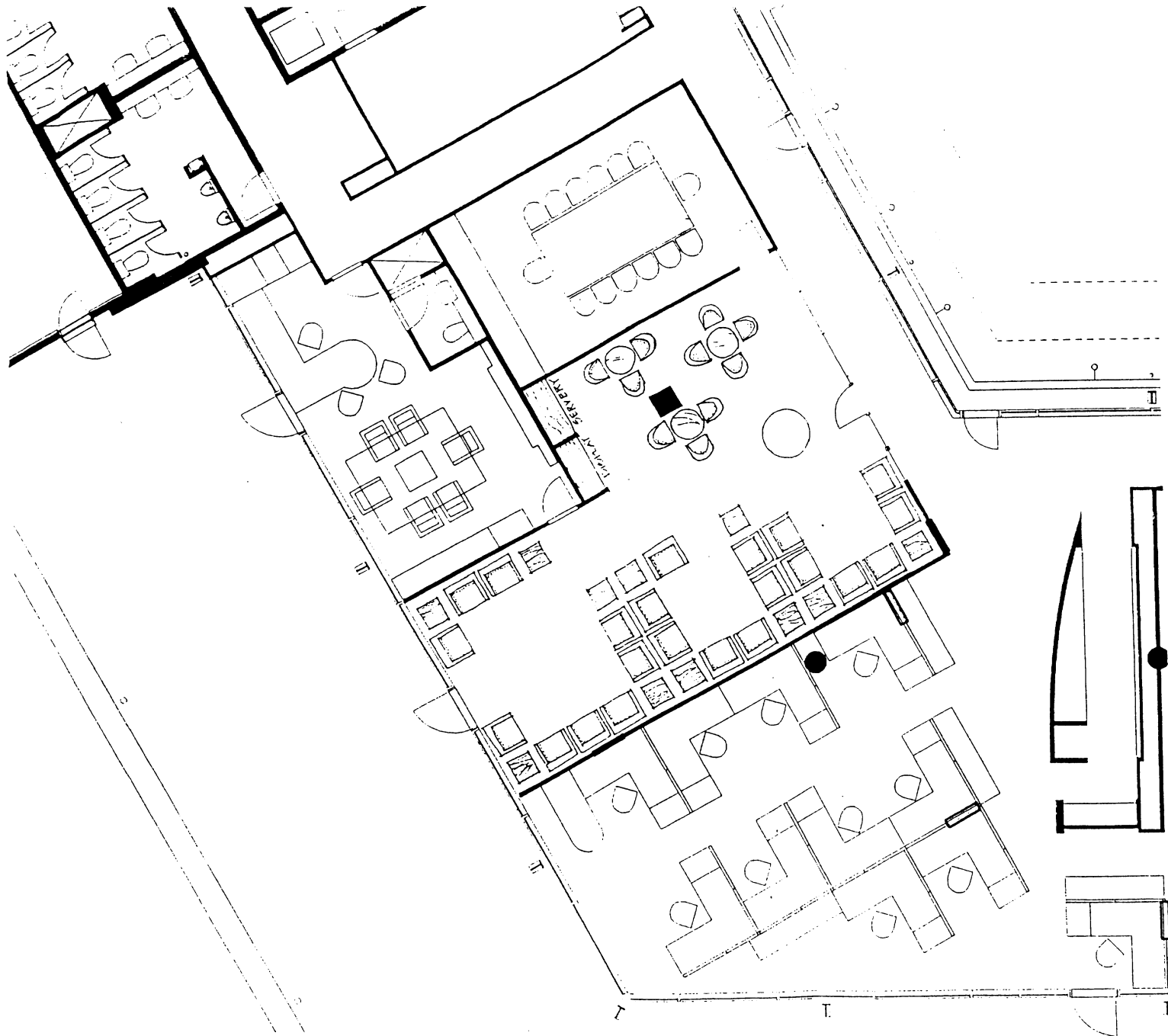
- Access direct from front entry
- No necessity to access secure zone
- Existing conference room available
- Permanent installation

### Cons

- Building works required
- Deletion of two small meeting rooms
- Views to be obscured for privacy
- Acoustic isolation from public foyer difficult
- Construction detailing critical and costly
- Isolation from catering facilities
- No dedicated toilet facilities



# VIP RECEPTION - OPTION TWO



### OPTION THREE

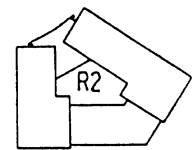
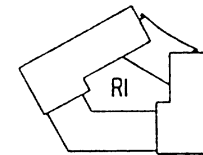
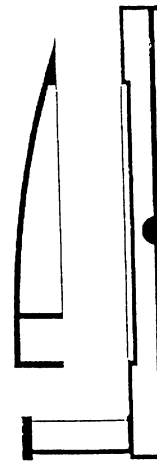
Conference Seating: 16  
 Informal Lounge Seating: 22

#### Pros

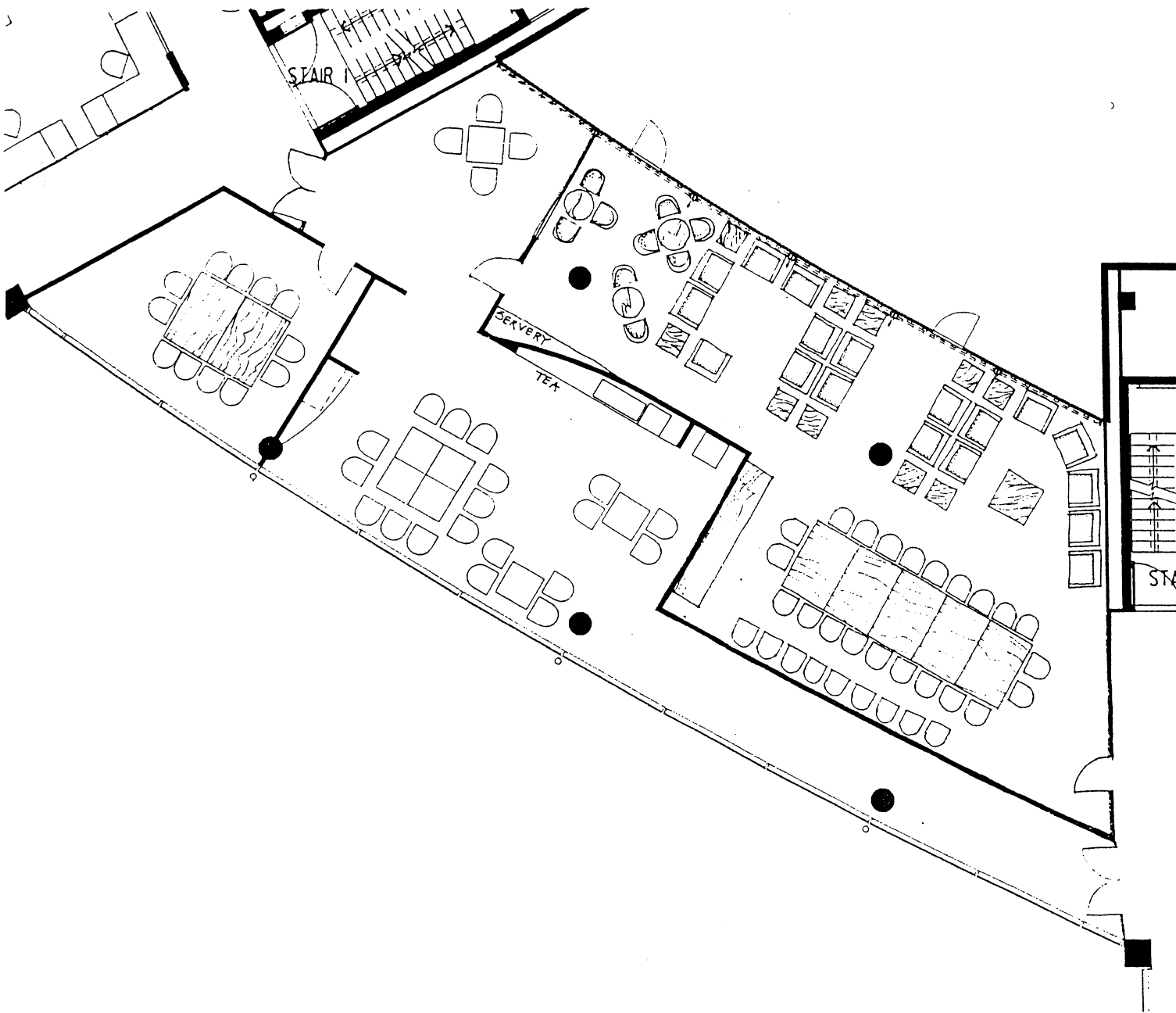
- Access to balcony and views to Parliamentary triangle
- Toilet facilities near by but not dedicated
- Tea facilities near by
- Large informal area
- Permanent installation

#### Cons

- Existing conference room seats 16 persons
- Access through secure zone
- Loss of office and workstation space



## VIP RECEPTION - OPTION THREE



### OPTION FOUR

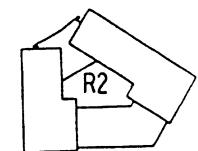
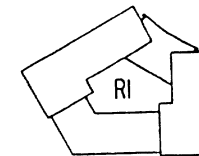
Conference Seating: 22  
 Informal Lounge Seating: 18

#### Pros

- Access to balcony and views to native bush
- Toilet facilities nearby but not dedicated
- Tea facilities available within space
- Additional 12 person meeting room available
- Area can be secured from the floor
- Width of conference room allows additional seating along wall

#### Cons

- Conference table is not isolated from lounge area
- Significant construction work required
- Building circulation obstructed
- Access through secure zone



## VIP RECEPTION - OPTION FOUR