

EDUCATION, SCIENCE AND TRAINING

SENATE LEGISLATION COMMITTEE - QUESTIONS ON NOTICE 2006-2007 SUPPLEMENTARY BUDGET ESTIMATES HEARING

Outcome: ALL
Output Group: ALL

DEST Question No. E575_07

Senator Wong provided in writing.

Question:

Refer to p.181 of the DEST 2005/06 Annual Report, see notes c), d) and e) at bottom of page, which notes that 14 SES staff were on higher duties at the time.

- (a) Given that this is a snapshot rather than time series, does this situation of 14 SES staff being on HDA indicate a higher than normal usage of HDA for SES officers over the year?
- (b) How does DEST compare with SES HDA usage across the APS?

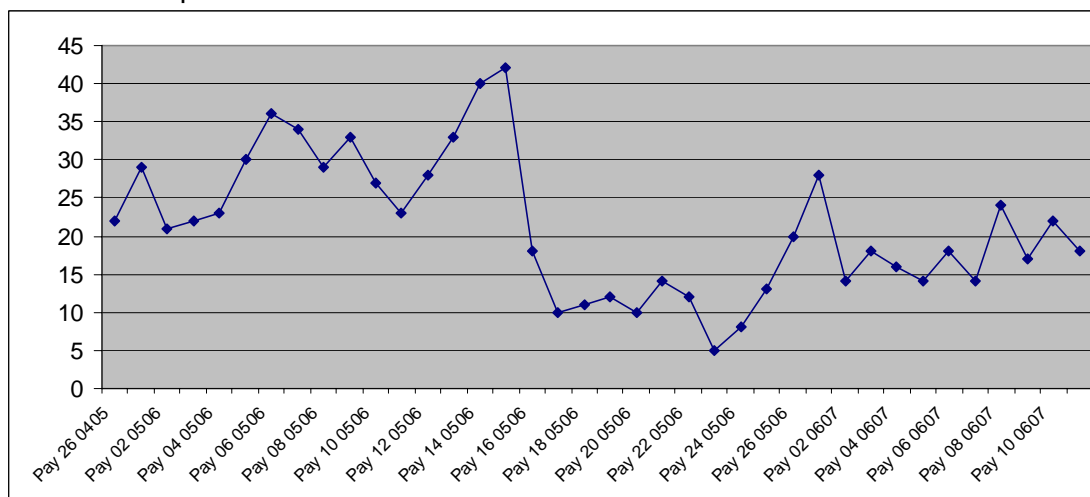
Answer:

- (a) The DEST Annual Report for 2005-06 notes in total 19 employees (not 14 as highlighted in Senator Wong's question) temporarily performing duties at the SES level, which includes:

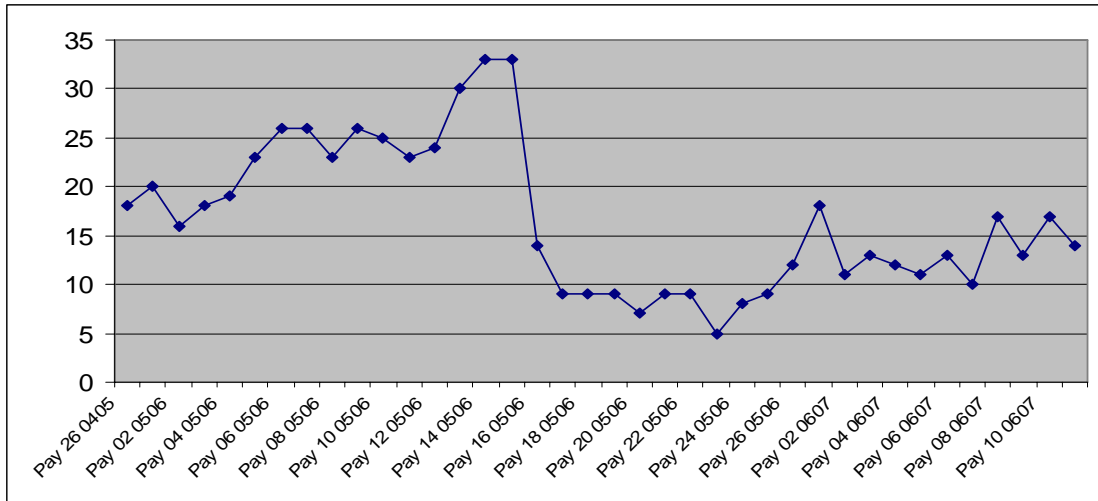
- two Band 2s acting Band 3;
- six Band 1s acting Band 2; and
- eleven EL 2s acting Band 1.

The number of employees acting in the SES is highly variable depending on the incidence of leave (planned and unplanned), structural changes resulting from new programme initiatives, turnover of SES employees and the status of permanent filling processes. Over the past 18 months the number of employees on HDA in SES positions on any given payday has varied from 5 through to 42 (reflecting the seasonal peak for Christmas/New Year).

A time-series presentation of all SES HDA since June 2005 as follows:



The majority of SES HDA relates to EL2 employees acting in SES Band 1 positions. A time-series presentation of these figures since June 2005 is as follows:



(b) The Department does not compare its HDA usage with other APS Agencies and is not aware of any mechanism through which SES HDA is centrally reported.