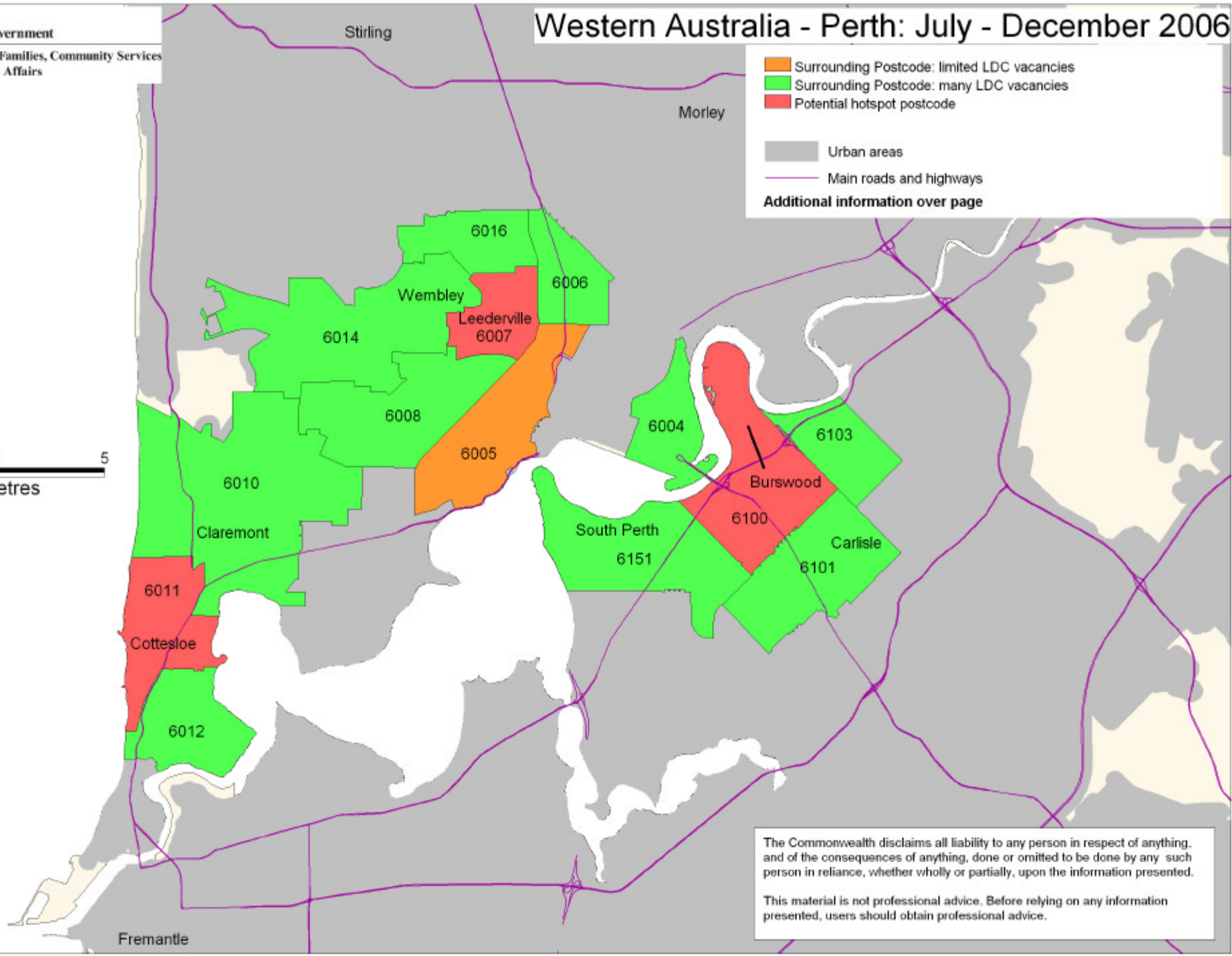




Western Australia - Perth: July - December 2006

- Surrounding Postcode: limited LDC vacancies
 - Surrounding Postcode: many LDC vacancies
 - Potential hotspot postcode
 - Urban areas
 - Main roads and highways
- Additional information over page**



The Commonwealth disclaims all liability to any person in respect of anything, and of the consequences of anything, done or omitted to be done by any such person in reliance, whether wholly or partially, upon the information presented.

This material is not professional advice. Before relying on any information presented, users should obtain professional advice.

6007 West Leederville, Leederville
6011 Cottesloe, Peppermint Grove
6100 Victoria Park, Lathlain, Burswood

Adjoining postcodes to the potential hotspots (July-December 2006)

- All of the adjoining postcodes to the potential hotspots had long day care centre vacancies available.

Family day care as an alternative (July-December 2006)

- There were family day care vacancies in all of the potential hotspot postcodes and in at least 1 adjoining postcode.

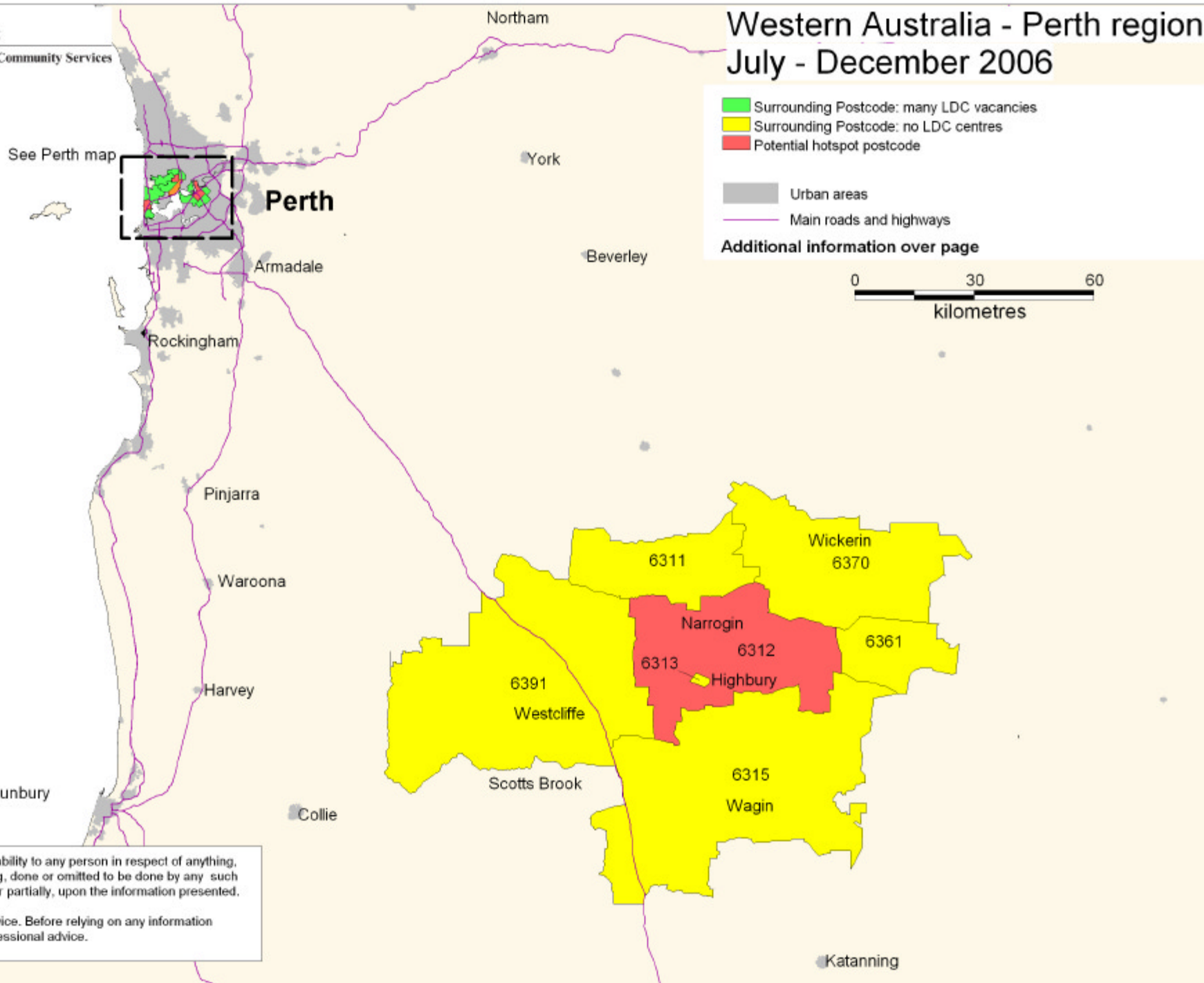
Planning applications

- No planning applications for new long day care centres have been submitted to local councils in this area.

Vacancy data may have changed since December 2006



Western Australia - Perth region: July - December 2006



The Commonwealth disclaims all liability to any person in respect of anything, and of the consequences of anything, done or omitted to be done by any such person in reliance, whether wholly or partially, upon the information presented.

This material is not professional advice. Before relying on any information presented, users should obtain professional advice.

6312 Wardering, Toolibin, Narrogin Valley, Nomans Lake, Cancanning, Piesseville, Yilliminning, Dumberning, Highbury, Boundain, Narrogin, Hillside, Minigin

Adjoining postcodes to the potential hotspots (July-December 2006)

- There were no long day care centres in any of the adjoining postcodes.

Family day care as an alternative (July-December 2006)

- There were family day care vacancies in the potential hotspot postcode and in at least 1 adjoining postcode.

Planning applications

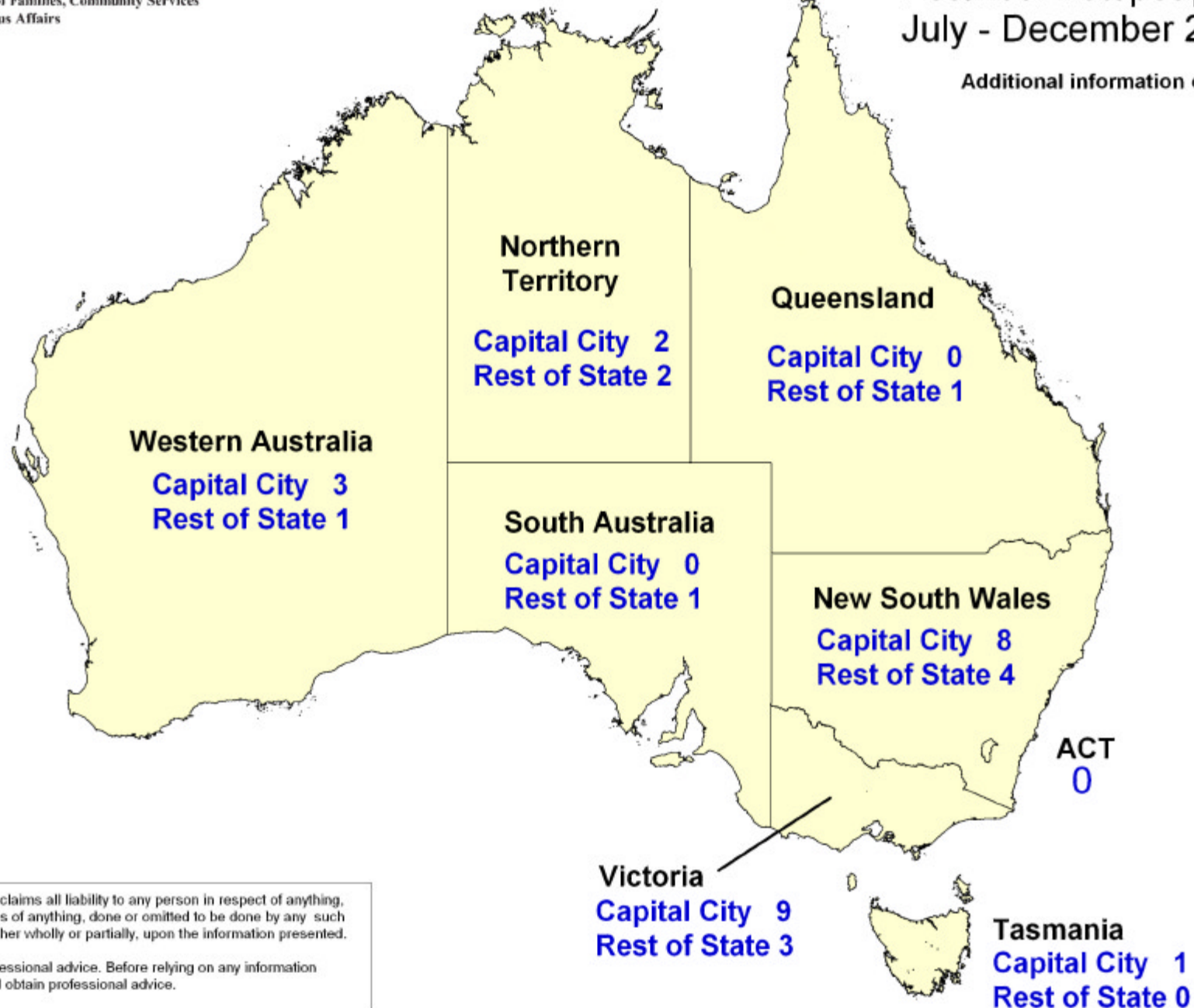
- No planning applications for new long day care centres have been submitted to local councils in this area.

Vacancy data may have changed since December 2006



Potential hotspot postcodes: July - December 2006

Additional information over page



The Commonwealth disclaims all liability to any person in respect of anything, and of the consequences of anything, done or omitted to be done by any such person in reliance, whether wholly or partially, upon the information presented.

This material is not professional advice. Before relying on any information presented, users should obtain professional advice.

There were 35 potential hotspots for the July - December 2006 period across all areas of Australia

- The majority of the potential hotspots fell into New South Wales and Victoria
- ACT was the only state or territory in Australia that did not have a potential hotspot

Vacancy data may have changed since December 2006