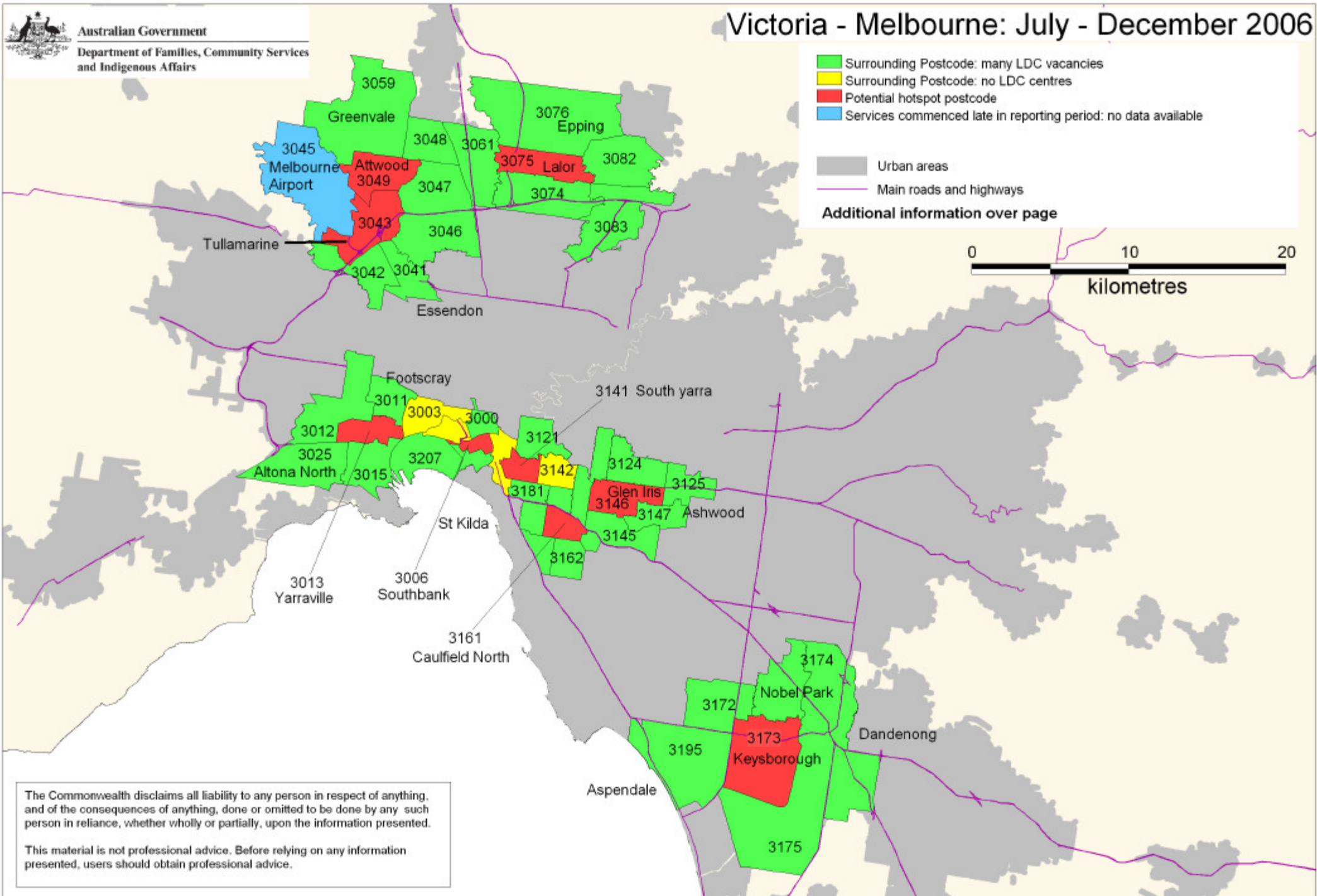




Victoria - Melbourne: July - December 2006



The Commonwealth disclaims all liability to any person in respect of anything, and of the consequences of anything, done or omitted to be done by any such person in reliance, whether wholly or partially, upon the information presented.

This material is not professional advice. Before relying on any information presented, users should obtain professional advice.

3043 Westmeadows, Gowanbrae
3049 Gladstone Park, Tullamarine, Attwood
3075 Lalor
3006 Southbank
3013 Yarraville
3141 South Yarra
3146 Glen Iris
3161 Caulfield North
3173 Keysborough

Adjoining postcodes to the potential hotspots (July-December 2006)

- The majority of adjoining postcodes to the potential hotspots had long day care centre vacancies available.

Family day care as an alternative (July-December 2006)

- There were family day care vacancies in and/or adjoining the potential hotspot postcodes.

Planning applications

- Planning applications for new long day care centres have been submitted to local councils in adjoining postcodes of 4 of the 9 potential hotspots.

Vacancy data may have changed since December 2006

3556 California Gully, Sailors Gully, Woodvale, Eaglehawk North, Sebastian, Myers Flat, Eaglehawk, Jackass Flat, Whipstick, Campbells Forest
3616 Mooroopna North West, Girgarre East, Gillieston, Tatura, Harston, Cooma, Tatura East

Adjoining postcodes to the potential hotspots (July-December 2006)

- Some of the adjoining postcodes to the potential hotspots had long day care centre vacancies available.
- The majority of adjoining postcodes did not have long day care centres.

Family day care as an alternative (July-December 2006)

- There were family day care vacancies in both of the potential hotspot postcodes and in at least 1 adjoining postcode.

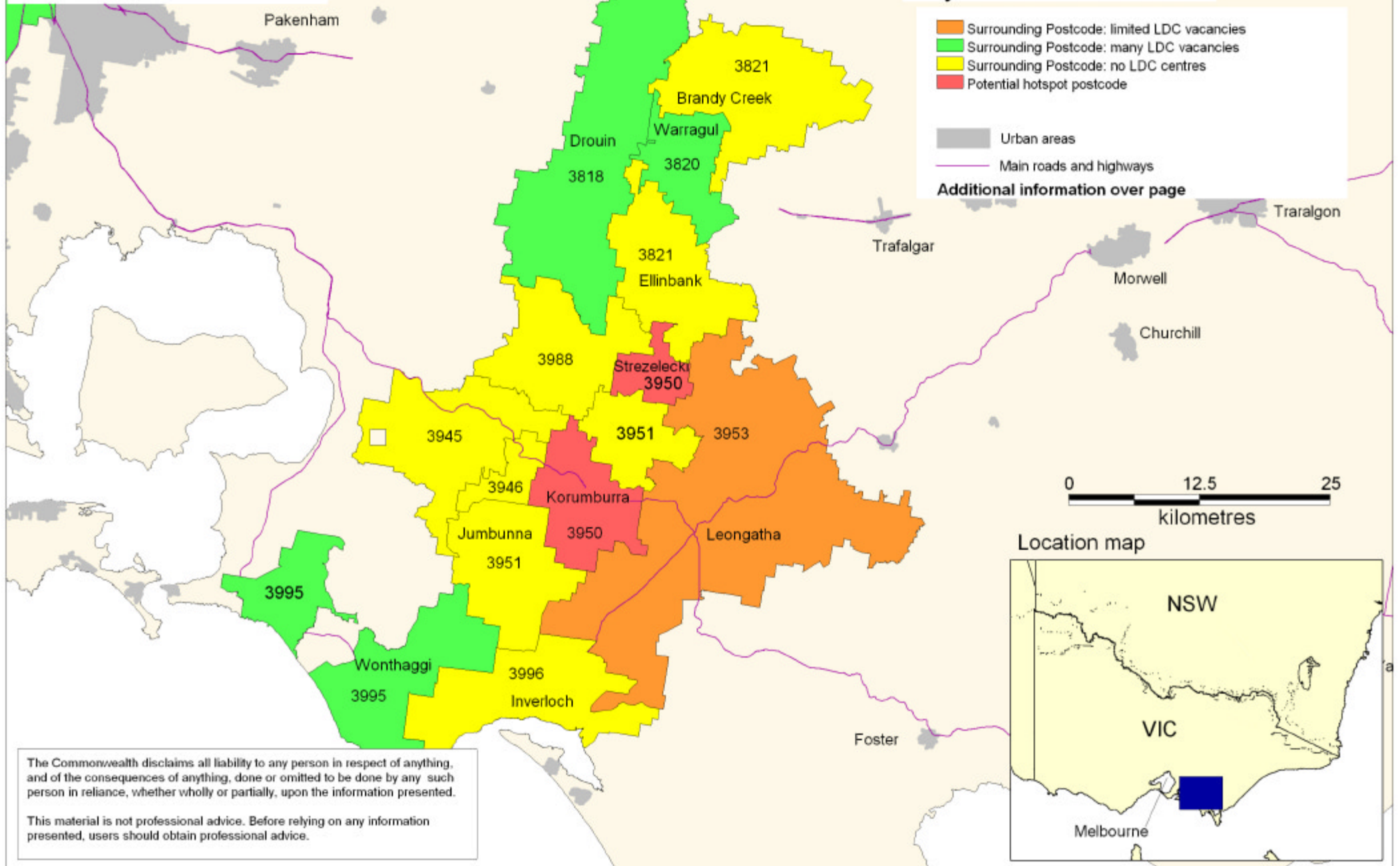
Planning applications

- There have been no planning applications for new long day care centres submitted to local councils in this area.

Vacancy data may have changed since December 2006



Victoria - South Gippsland region: July - December 2006



The Commonwealth disclaims all liability to any person in respect of anything, and of the consequences of anything, done or omitted to be done by any such person in reliance, whether wholly or partially, upon the information presented.

This material is not professional advice. Before relying on any information presented, users should obtain professional advice.

3950 Kardella South, Korumburra, Korumburra South, Strzelecki

Adjoining postcodes to the potential hotspots (July-December 2006)

- There were limited long day care centre vacancies in one of the adjoining postcodes.
- There were no long day care centres in the majority of the adjoining postcodes.

Family day care as an alternative (July-December 2006)

- There were family day care vacancies in the potential hotspot postcode and in at least 1 adjoining postcode.

Planning applications

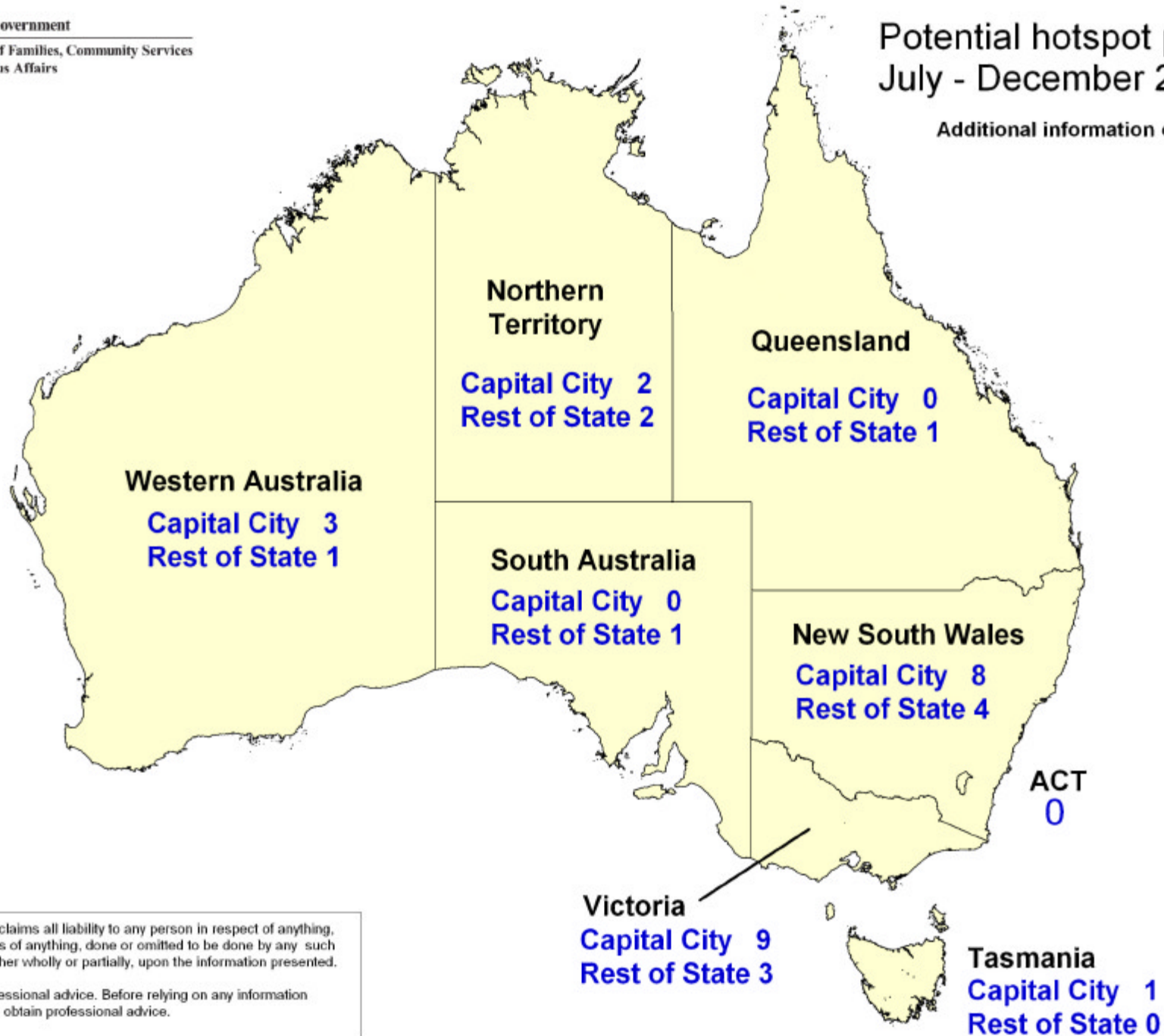
- Planning applications for new long day care centres have been submitted to local councils in the potential hotspot postcode.

Vacancy data may have changed since December 2006



Potential hotspot postcodes: July - December 2006

Additional information over page



The Commonwealth disclaims all liability to any person in respect of anything, and of the consequences of anything, done or omitted to be done by any such person in reliance, whether wholly or partially, upon the information presented.

This material is not professional advice. Before relying on any information presented, users should obtain professional advice.

There were 35 potential hotspots for the July - December 2006 period across all areas of Australia

- The majority of the potential hotspots fell into New South Wales and Victoria
- ACT was the only state or territory in Australia that did not have a potential hotspot

Vacancy data may have changed since December 2006