

New South Wales - Sydney: July - December 2006

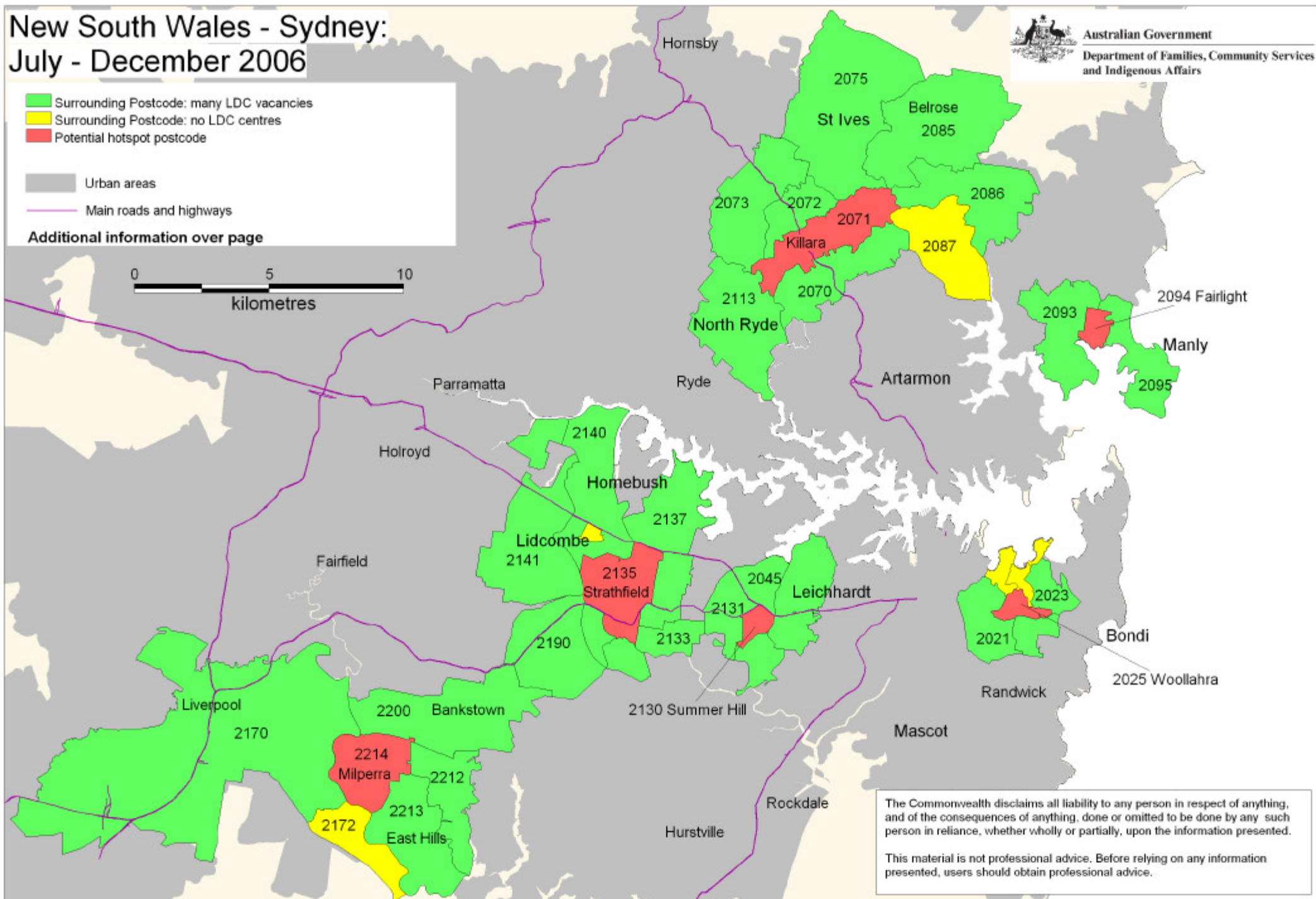
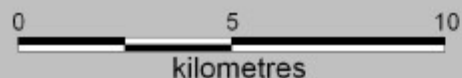


Australian Government
Department of Families, Community Services
and Indigenous Affairs

- Surrounding Postcode: many LDC vacancies
- Surrounding Postcode: no LDC centres
- Potential hotspot postcode

- Urban areas
- Main roads and highways

Additional information over page



The Commonwealth disclaims all liability to any person in respect of anything, and of the consequences of anything, done or omitted to be done by any such person in reliance, whether wholly or partially, upon the information presented.

This material is not professional advice. Before relying on any information presented, users should obtain professional advice.

2130 Summer Hill
2135 Homebush, Strathfield, Strathfield South
2214 Revesby, Milperra, Panania
2071 Killara, Lindfield, West Pymble, Gordon, East Killara
2094 Manly, Fairlight
2025 Woollahra

Adjoining postcodes to the potential hotspots (July-December 2006)

- The majority of adjoining postcodes to the potential hotspots had long day care centre vacancies available.

Family day care as an alternative (July-December 2006)

- There were family day care vacancies in all of the potential hotspot postcodes and in at least 1 adjoining postcode.

Planning applications

- Planning applications for new long day care centres have been submitted to local councils in 5 of the 6 potential hotspot or adjoining postcodes.

Vacancy data may have changed since December 2006

New South Wales - Katoomba region: July - December 2006

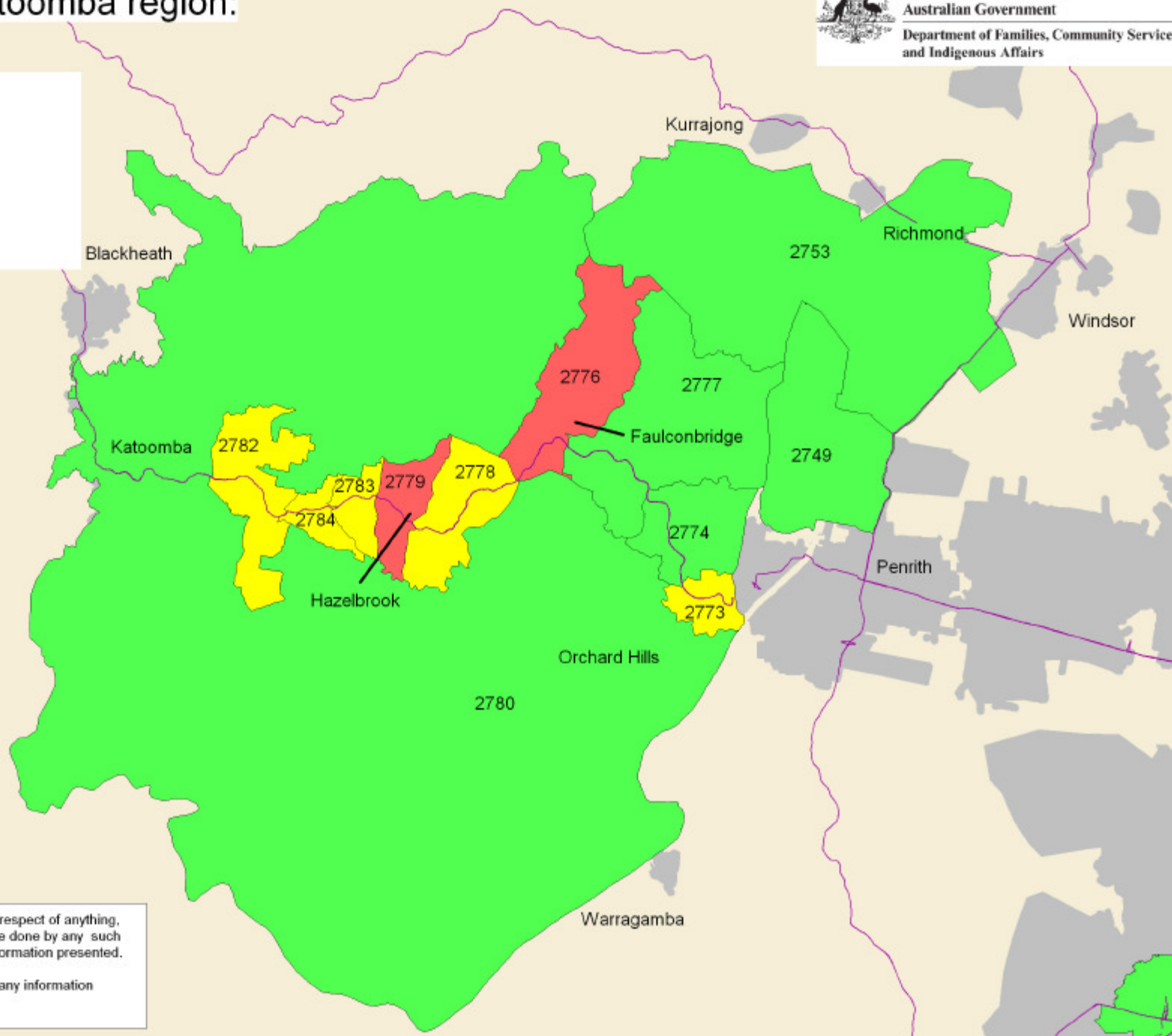
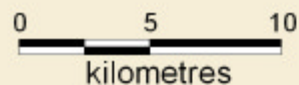


Australian Government
Department of Families, Community Services
and Indigenous Affairs

- Surrounding Postcode: many LDC vacancies
- Surrounding Postcode: no LDC centres
- Potential hotspot postcode

- Urban areas
- Main roads and highways

Additional information over page



The Commonwealth disclaims all liability to any person in respect of anything, and of the consequences of anything, done or omitted to be done by any such person in reliance, whether wholly or partially, upon the information presented.

This material is not professional advice. Before relying on any information presented, users should obtain professional advice.

2776 Springwood, Faulconbridge
2779 Blue Mountains National Park, Hazelbrook

Adjoining postcodes to the potential hotspots (July-December 2006)

- The majority of adjoining postcodes to the potential hotspots had long day care centre vacancies available.
- There were five adjoining postcodes with no long day care centres.

Family day care as an alternative (July-December 2006)

- There were family day care vacancies in both of the potential hotspot postcodes and in at least 1 adjoining postcode.

Planning applications

- Planning applications for new long day care centres have been submitted to local councils in an adjoining postcode of 1 of the 2 potential hotspots.

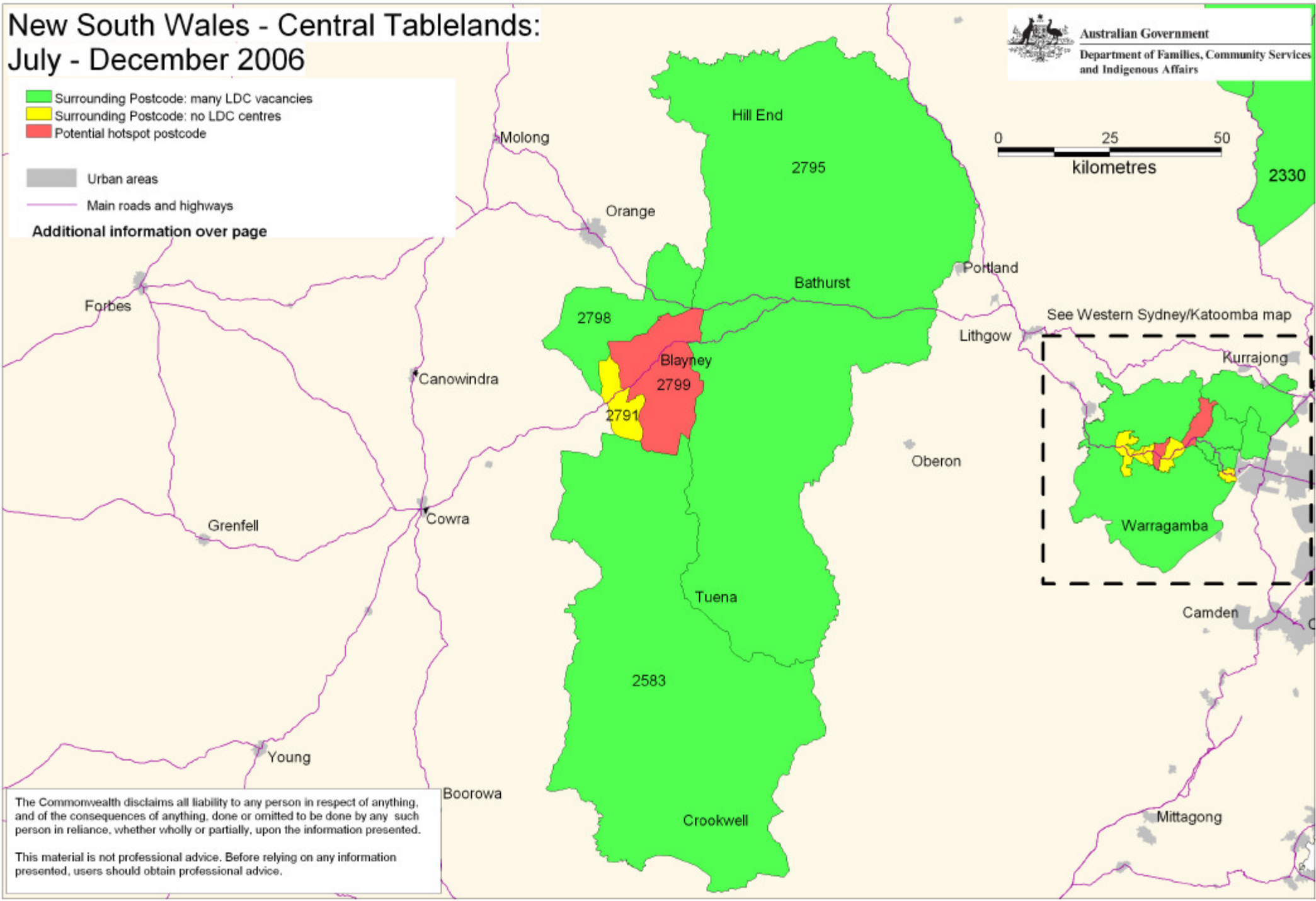
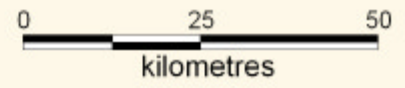
Vacancy data may have changed since December 2006

New South Wales - Central Tablelands: July - December 2006

- Surrounding Postcode: many LDC vacancies
- Surrounding Postcode: no LDC centres
- Potential hotspot postcode

- Urban areas
- Main roads and highways

Additional information over page



The Commonwealth disclaims all liability to any person in respect of anything, and of the consequences of anything, done or omitted to be done by any such person in reliance, whether wholly or partially, upon the information presented.

This material is not professional advice. Before relying on any information presented, users should obtain professional advice.

2799 Newbridge, Moorilda, Blayney, Millthorpe, Kings Plains, Barry, Guyong, Browns Creek, Tallwood, Neville, Carcoar, Hobbys Yards, Vittoria

Adjoining postcodes to the potential hotspots (July-December 2006)

- The majority of adjoining postcodes to the potential hotspot had long day care centre vacancies available.

Family day care as an alternative (July-December 2006)

- There were family day care vacancies in the potential hotspot postcode and in at least 1 adjoining postcode.

Planning applications

- There have been no planning applications for new long day care centres submitted to local councils in this area.

Vacancy data may have changed since December 2006



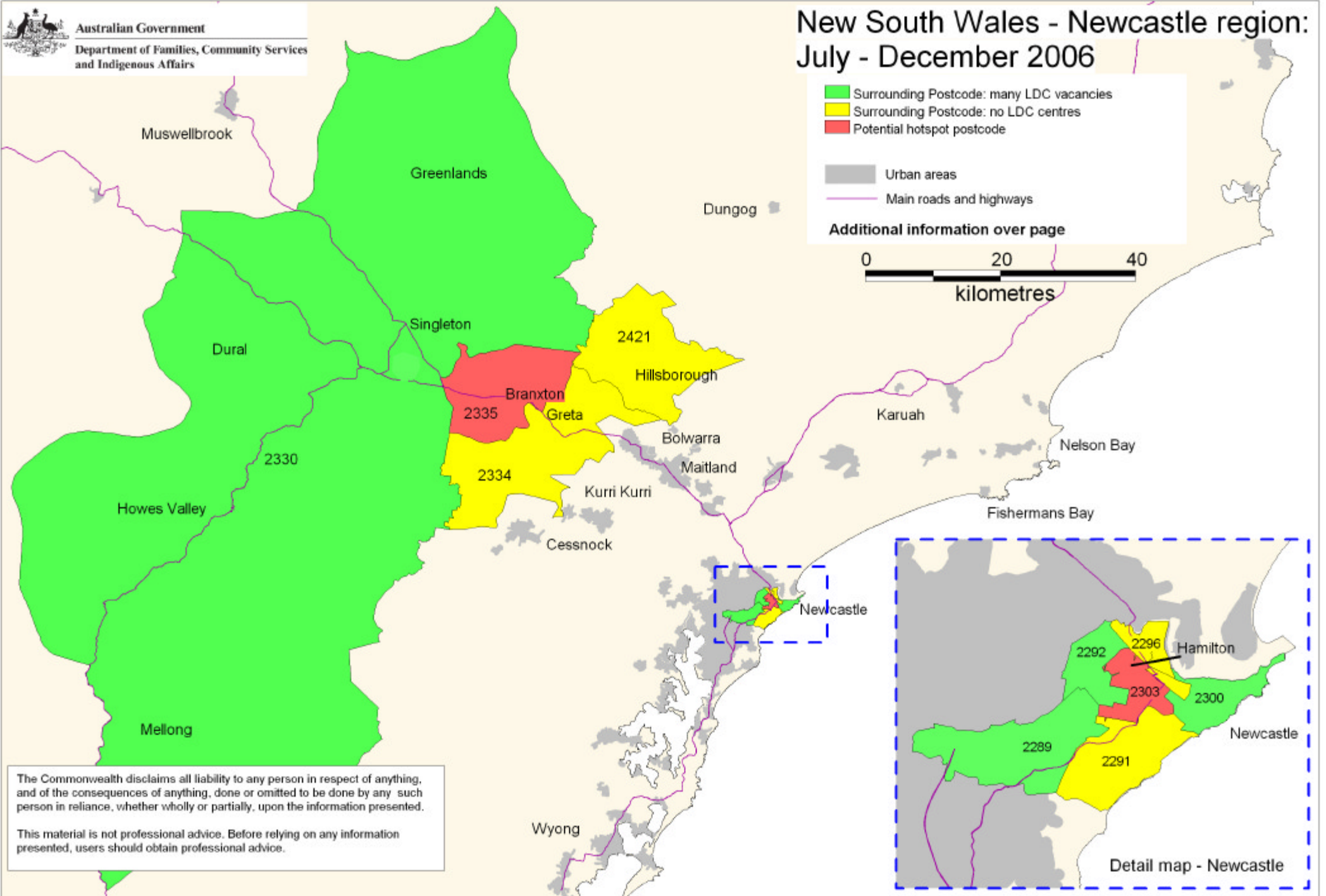
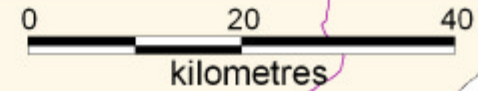
New South Wales - Newcastle region: July - December 2006

- Surrounding Postcode: many LDC vacancies
- Surrounding Postcode: no LDC centres
- Potential hotspot postcode

Urban areas

Main roads and highways

Additional information over page



The Commonwealth disclaims all liability to any person in respect of anything, and of the consequences of anything, done or omitted to be done by any such person in reliance, whether wholly or partially, upon the information presented.

This material is not professional advice. Before relying on any information presented, users should obtain professional advice.

Detail map - Newcastle

2303 Newcastle West, Hamilton East, Hamilton, Hamilton South, Broadmeadow
2335 Whittingham, Lower Belford, Rothbury, Lambs Valley, Pokolbin, Belford, Branxton, Dalwood, Leconfield, East Branxton, Greta, North Rothbury, Elderslie, Stanhope

Adjoining postcodes to the potential hotspots (July-December 2006)

- Some of adjoining postcodes to the potential hotspots had long day care centre vacancies available.
- There were no long day care centres in half of the adjoining postcodes.

Family day care as an alternative (July-December 2006)

- There were family day care vacancies in 1 of the 2 potential hotspot postcodes and in at least 1 adjoining postcode of both potential hotspots.

Planning applications

- No planning applications for new long day care centres have been submitted to local councils in this area.

Vacancy data may have changed since December 2006

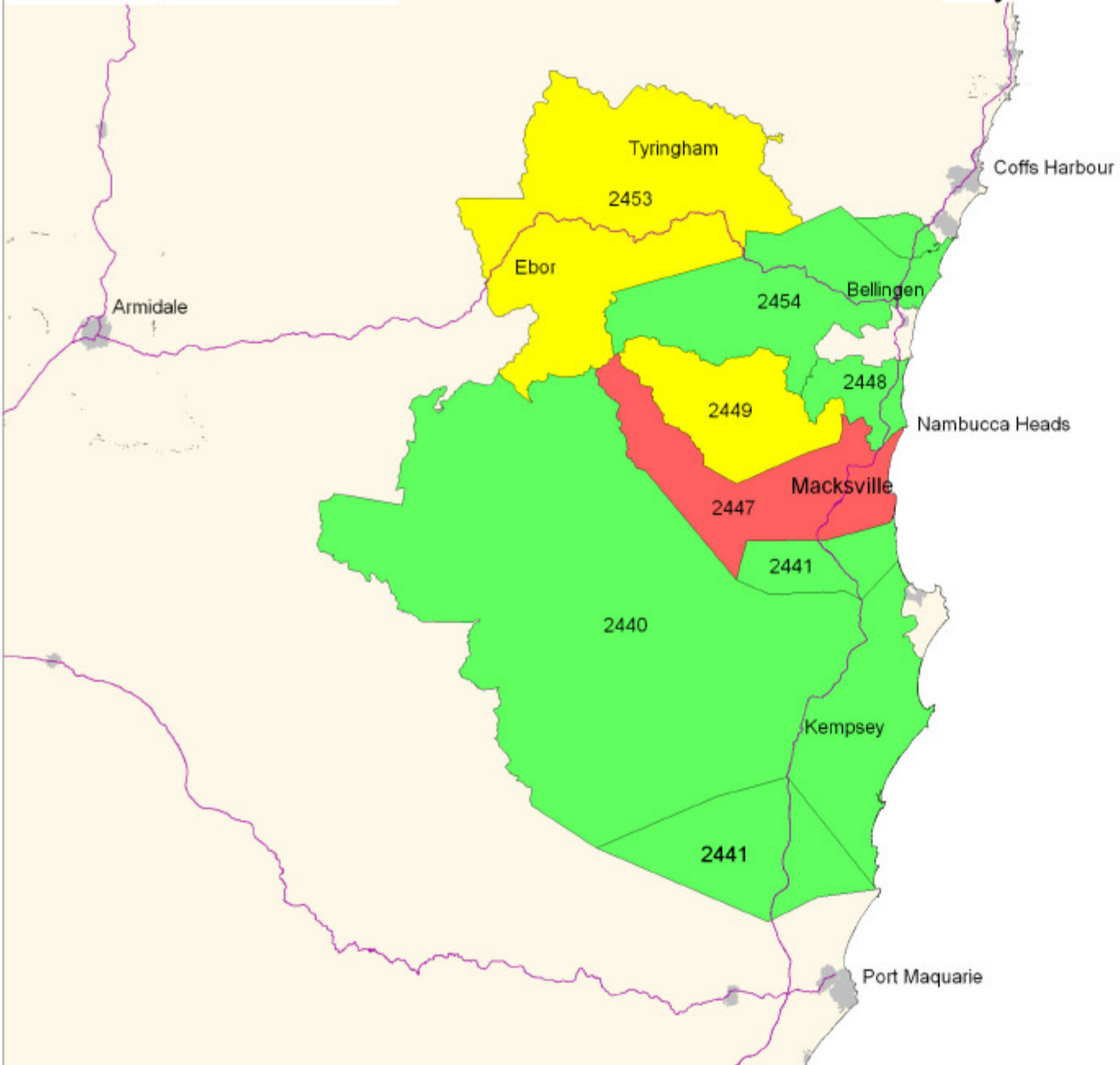
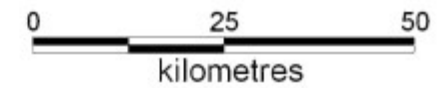


New South Wales - Mid North Coast region July - December 2006

- Surrounding Postcode: many LDC vacancies
- Surrounding Postcode: no LDC centres
- Potential hotspot postcode

- Urban Areas
- Main roads and highways

Additional information over page



The Commonwealth disclaims all liability to any person in respect of anything, and of the consequences of anything, done or omitted to be done by any such person in reliance, whether wholly or partially, upon the information presented.

This material is not professional advice. Before relying on any information presented, users should obtain professional advice.

2447 Gumma, Scotts Head, Grassy Head, Way Way, Nambucca Heads, Newee Creek, Talarm, Utungun, Wirrimbi, North Macksville, Congarinni North, Congarinni, Tewinga, Macksville, Killiekrankie, Eungai Creek, Warrell Creek, Donnellyville, Bellbrook, Allgomera, Bakers Creek, Burratine, Upper Taylors Arm, South Arm, Buckra Bendinni, Thumb Creek, Taylors Arm, Yarranbella

Adjoining postcodes to the potential hotspots (July-December 2006)

- The majority of adjoining postcodes to the potential hotspot had long day care centre vacancies available.

Family day care as an alternative (July-December 2006)

- There were family day care vacancies in the potential hotspot postcode and in at least 1 adjoining postcode.

Planning applications

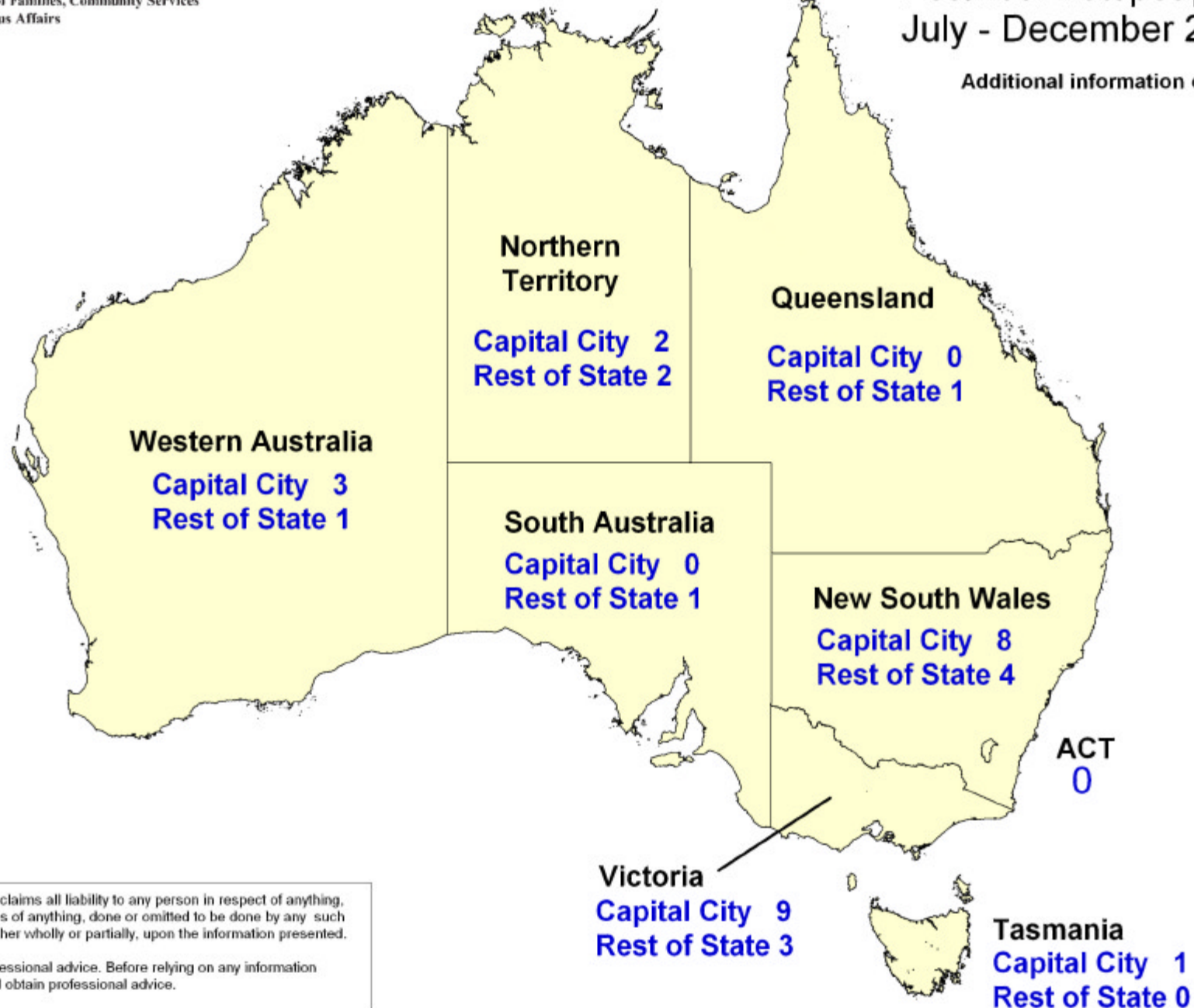
- No planning applications for new long day care centres have been submitted to local councils in this area.

Vacancy data may have changed since December 2006



Potential hotspot postcodes: July - December 2006

Additional information over page



The Commonwealth disclaims all liability to any person in respect of anything, and of the consequences of anything, done or omitted to be done by any such person in reliance, whether wholly or partially, upon the information presented.

This material is not professional advice. Before relying on any information presented, users should obtain professional advice.

There were 35 potential hotspots for the July - December 2006 period across all areas of Australia

- The majority of the potential hotspots fell into New South Wales and Victoria
- ACT was the only state or territory in Australia that did not have a potential hotspot

Vacancy data may have changed since December 2006