

EDUCATION, SCIENCE AND TRAINING

SENATE LEGISLATION COMMITTEE - QUESTIONS ON NOTICE 2003-2004 BUDGET ESTIMATES HEARING

Outcome: 1
Output Group: 1.1 – Funding for schools

DEST Question No. E015_04

Senator Nettle tabled on 5 June 2003

Question:

Will the Department please provide on a single electronic spreadsheet with the following data?

For each private school in NSW,

- name
- address
- suburb
- postcode
- state
- primary enrolment in year 2000
- primary enrolment in year 2001
- primary enrolment in year 2002
- primary enrolment in year 2003
- secondary enrolment in year 2000
- secondary enrolment in year 2001
- secondary enrolment in year 2002
- secondary enrolment in year 2003
- Educational Resource Category (if applicable)
- SES rating in 2001
- SES rating in 2002
- SES rating in 2003
- recurrent funding in 2000 in respect of primary students
- recurrent funding in 2002 in respect of primary students
- recurrent funding in 2003 in respect of primary students
- estimated recurrent funding in 2004 in respect of primary students
- recurrent funding for 2000 in respect of secondary students
- recurrent funding for 2002 in respect of secondary students
- recurrent funding for 2003 in respect of secondary students
- estimated recurrent funding for 2004 in respect of secondary students
- capital grant funding for 2000
- capital grant funding for 2001
- capital grant funding for 2002
- capital grant funding for 2003
- estimated capital grant funding for 2003
- transitional emergency grant funding for 2001
- transitional emergency grant funding for 2002
- transitional emergency grant funding for 2003

- establishment grant for 2001
- establishment grant for 2002
- establishment grant for 2003
- special education grants for 2001
- special education grants for 2002
- special education grants for 2003
- literacy and numeracy grants for 2001
- literacy and numeracy grants for 2002
- literacy and numeracy grants for 2003

Answer:

Non-government school funding in NSW - 2000 to 2004

The majority of the data requested have already been provided to the Committee in response to QON E617_03, in electronic form where possible. The following is in addition to the data included in the response to QON E617_03.

Estimated capital grant funding for 2000 to 2004 to non-government schools in NSW

Attachment A provides estimated capital grant funding to non-government schools in NSW for the period 2000 to 2004.

Grants under the Schools Transitional Emergency Assistance (STEA) Programme to non-government schools in NSW, 2001, 2002 and 2003

Attachment B provides a list of grants to NSW under the STEA programme. It is Departmental policy not to publicly release the names of schools receiving STEA in order to avoid any possible financial detriment to them.

Commonwealth additional assistance for literacy and numeracy and special education is provided under the Strategic Assistance for Improving Student Outcomes (SAISO) programme.

State and Territory government and non-government school education authorities are responsible for the detailed administration of this programme in their systems and schools. They determine the nature of additional assistance based on need including determining appropriate funding amounts to support these initiatives. Accountability for SAISO funds rests with these authorities.

For the non-government school sector in NSW, the New South Wales Catholic Education Commission and the Association of Independent Schools of New South Wales are the responsible authorities.

The following table shows SAISO allocations for the 2001, 2002 and 2003 programme years for the New South Wales Catholic and Independent sectors.

	2001	2002	2003 (initial allocations)
NSW CEC	\$28,999,946	\$30,698,620	\$30,698,620
NSW AIS	\$12,879,123	\$13,616,864	\$13,616,864

In the Catholic sector, funds are used in conjunction with broader systemic resources to support a range of sector literacy and numeracy programmes and support services for students with disabilities.

In the independent sector, a mix of sector teacher professional development programmes, sector wide literacy and numeracy programmes, sector students with disabilities support services and grants to schools are supported under SAISO.

Summary details, provided to the Commonwealth by the NSW AIS, of grants to schools for literacy / numeracy and special education programmes in the independent sector for 2001 and 2002 funded by SAISO allocations are at [Attachment C](#). Details of 2003 programmes are not yet available.

CAPITAL GRANTS TO NSW NON-GOVERNMENT SCHOOLS IN 2000-2004

State	Client No.	Schools	Location	2000	2001	2002	2003	2004
NSW	1307	All Saints College	Bathurst					
NSW	1316	Avondale Primary School	Cooranbong					
NSW	1319	Bethlehem College	Ashfield					
NSW	1320	Henschke Primary School	Wagga Wagga					
NSW	1328	Brigidine Senior School	Randwick					
NSW	1333	Sacred Heart School	Cootamundra					
NSW	1338	Central Coast Adventist School	Erina	\$300,000	\$100,000	\$150,000		
NSW	1339	Cerdon College	Merrylands	\$1,187,500	\$166,600		\$584,957	\$572,849
NSW	1340	Chevalier College	Bowral					
NSW	1341	Christian Brothers High School	Burwood					
NSW	1343	Our Lady of the Rosary College	Tamworth					
NSW	1350	Avondale Seventh Day Adventist High School	Cooranbong				\$100,000	
NSW	1354	Christ the King School	Yagoona				\$664,904	
NSW	1355	Newcastle Grammar School	Newcastle					
NSW	1356	Claremont College	Randwick					
NSW	1360	Corpus Christi Primary School	Waratah			\$553,120		
NSW	1365	De La Salle College	Ashfield					
NSW	1366	La Salle College	Bankstown					

State	Client No.	Schools	Location	2000	2001	2002	2003	2004
NSW	1378	Domremy College	Five Dock					
NSW	1379	Edmund Rice College	Wollongong West					
NSW	1380	Elonera Montessori School	Mount Ousley		\$190,000	\$103,000		
NSW	1384	St Augustine's School	Narramine	\$71,238				
NSW	1391	Holy Cross Primary School	Helensburgh					
NSW	1394	Holy Family School	Granville East					
NSW	1402	Holy Spirit Primary School	Lavington					
NSW	1403	Holy Trinity School	Inverell					
NSW	1404	Holy Trinity Primary School	Wagga Wagga					
NSW	1405	Holy Trinity School	Granville					
NSW	1406	The Illawarra Grammar School	West Wollongong					
NSW	1409	Kinma School	Terrey Hills			\$55,000		
NSW	1412	La Salle Academy	Lithgow					
NSW	1416	Lorien Novalis School for Rudolf Steiner Education	Glenhaven					
NSW	1418	McCarthy Catholic Senior High School	Tamworth	\$1,405,553				
NSW	1419	Mackillop Girls High School	Lakemba					
NSW	1421	Macarthur Adventist School	Macquarie Fields					\$300,000
NSW	1428	Red Bend Catholic College	Forbes		\$549,155			
NSW	1429	Marist College Kogarah	Bexley					

State	Client No.	Schools	Location	2000	2001	2002	2003	2004
NSW	1432	St Peter's High School	Maitland					
NSW	1444	Marist Sisters College	Woolwich					
NSW	1448	Masada College	Lindfield					
NSW	1450	Mater Maria College	Warriewood					
NSW	1458	Mount Erin High School	Wagga Wagga					
NSW	1462	Mount St Joseph Milperra	Milperra	\$990,822				
NSW	1465	Mount St Patrick Primary School	Murwillumbah					
NSW	1466	Mount St Patrick College	Murwillumbah					
NSW	1467	Nagle College	Blacktown South					
NSW	1470	Macquarie College	Wallsend	\$250,000		\$330,000	\$20,000	
NSW	1479	Our Lady Help of Christians Primary School	Lismore South	\$712,700				
NSW	1485	Our Lady of Lebanon School	Harris Park					
NSW	1487	Our Lady of Lourdes School	Earlwood					
NSW	1495	Our Lady of Mercy College Parramatta	Parramatta					
NSW	1498	Our Lady of Mount Carmel School	Bonnyrigg					
NSW	1505	Mary Mackillop College	Wakeley					
NSW	1512	Our Lady of the Sacred Heart Regional College	Kensington					
NSW	1519	Patrician Brothers' College (Blacktown)	Blacktown					
NSW	1520	Patrician Brothers College	Fairfield					

State	Client No.	Schools	Location	2000	2001	2002	2003	2004
NSW	1521	Delany College	Granville		\$2,074,889			
NSW	1522	All Saints Catholic Boys' College	Liverpool			\$1,553,196		
NSW	1524	Port Macquarie Seventh Day Adventist School	Port Macquarie				\$150,000	
NSW	1530	Queenwood School for Girls Ltd	Mosman					
NSW	1532	Regina Coeli School	Beverley Hills	\$820,504				
NSW	1541	Sacred Heart School	Cabramatta	\$100,000	\$867,940			
NSW	1554	Sacred Heart School	Villawood				\$469,353	\$469,353
NSW	1555	Sacred Heart School	Westmead					
NSW	1557	St Agnes' High School	Rooty Hill					
NSW	1560	St Aidan's Primary School	Rooty Hill					
NSW	1567	St Andrew's School	Malabar					
NSW	1573	St Anne's Primary School	Albury North	\$142,622				
NSW	1575	St Anne's School	Temora					
NSW	1579	St Anthony's School	Girraween					
NSW	1580	St Anthony's Primary School	Kingscliff					
NSW	1588	St Benedict's Primary School	Edgeworth					
NSW	1592	St Bernadette's School	Lalor Park					
NSW	1598	St Brendan's School	Bankstown	\$357,531	\$648,768			
NSW	1599	St Brendan's Primary School	Ganmain					

State	Client No.	Schools	Location	2000	2001	2002	2003	2004
NSW	1610	St Brigid's Primary School	Raymond Terrace					
NSW	1611	St Canice's School	Katoomba					
NSW	1612	St Carthage's Primary School	Lismore					
NSW	1614	St Catherine's College Singleton	Singleton				\$621,316	\$855,740
NSW	1620	St Christopher's School	Panania					
NSW	1624	St Columban's Primary School	Mayfield					
NSW	1629	St Columba's School	Leichhardt North					
NSW	1636	St Edward's Christian Brothers College	East Gosford					
NSW	1639	St Felix' Primary School	Bankstown					
NSW	1641	St Finbarr's Primary School	Byron Bay					
NSW	1644	St Francis de Sales Regional College	Leeton				\$544,637	\$544,637
NSW	1648	St Francis Xavier's College	Hamilton					
NSW	1649	St Francis Xavier's School	Croydon Park		\$1,017,486			
NSW	1650	St Francis Xavier's School	Arncliffe					
NSW	1651	St Francis Xavier Primary School	Ballina					
NSW	1652	St Francis Xavier Primary School	Lake Cargelligo					
NSW	1657	St Gabriel's School	Bexley					
NSW	1659	St Gertrude's Primary School	Smithfield					
NSW	1660	St Gregory's College	Campbelltown					

State	Client No.	Schools	Location	2000	2001	2002	2003	2004
NSW	1663	St Ignatius' College	Lane Cove		\$30,000			
NSW	1664	St Ignatius' School	Bourke					
NSW	1668	St Jerome's School	Punchbowl					
NSW	1669	St Joachim's Primary School	Lidcombe					
NSW	1675	St John's College Woodlawn	Lismore					
NSW	1676	St John's Lutheran Primary School	Jindera					
NSW	1678	St John the Evangelist Primary School(Campbelltown)	Campbelltown					
NSW	1684	St John's School	Cobar					
NSW	1685	St John's Primary School	Lambton					
NSW	1690	St John's School	Trangie					
NSW	1694	St John Vianney's School	Greenacre					
NSW	1695	St John Vianney Primary School	Morisset					
NSW	1700	St Joseph's Primary School	South Murwillumbah					
NSW	1702	St Joseph's Primary School	West Kempsey					
NSW	1703	St Joseph's Primary School	Laurieton	\$327,112				
NSW	1706	St Joseph's Primary School	Tweed Heads					
NSW	1708	St Joseph's Girls High School	Kogarah					
NSW	1711	St Joseph's High School	Port Macquarie			\$1,284,495		
NSW	1712	Xavier High School	Albury	\$1,037,943				

State	Client No.	Schools	Location	2000	2001	2002	2003	2004
NSW	1714	St Joseph's Catholic College	Gosford East	\$1,198,672	\$1,977,446			
NSW	1717	Holy Spirit Infants School	Abermain					
NSW	1720	Marian College	Goulburn North					
NSW	1724	St Joseph's Primary School	Gloucester					
NSW	1725	St Joseph's Primary School	Leeton					
NSW	1733	St Joseph's Primary School	Taree					
NSW	1734	St Joseph's Primary School	Woodburn					
NSW	1737	St Joseph's High School	Aberdeen	\$328,093	\$174,132			
NSW	1743	St Joseph's School	Barraba					
NSW	1744	St Bernard's Primary School	Batehaven					
NSW	1745	St Francis Xavier's Primary School	Belmont					
NSW	1746	St Joseph's Primary School	Belmore					
NSW	1748	St Joseph's School	Bombala					
NSW	1749	St Joseph's School	Boorowa					
NSW	1750	St Joseph's Primary School	Bulahdelah				\$539,807	
NSW	1751	St Joseph's School	Bulli					
NSW	1757	St Joseph's School	Condobolin					
NSW	1761	St Joseph's School	Eden					
NSW	1762	St Joseph's Primary School	Enfield					

State	Client No.	Schools	Location	2000	2001	2002	2003	2004
NSW	1768	St Joseph's Primary School	Junee					
NSW	1769	St Joseph's School	Kingswood					
NSW	1770	Holy Spirit Primary School	Kurri Kurri					
NSW	1771	St Joseph's Primary School	Lockhart	\$20,230				
NSW	1772	St Joseph's Primary School	Maclean					
NSW	1773	St Joseph's Primary School (East Maitland)	East Maitland					
NSW	1778	St Joseph's School	Mungindi					
NSW	1779	St Joseph's School	Narrandera	\$23,138				
NSW	1784	St Joseph's School	Peak Hill					
NSW	1787	St Joseph's Primary School	Riverwood					
NSW	1790	St Joseph's School	Tamworth West					
NSW	1794	St Joseph's School	Uralla					
NSW	1796	St Joseph's School	Walgett					
NSW	1798	St Joseph's Primary School	Wauchope					
NSW	1799	St Joseph's School	Wee Waa					
NSW	1802	St Joseph the Worker School	Auburn South					
NSW	1803	St Joseph's School	Jerilderie					
NSW	1810	St Laurence's Primary School	Forbes					
NSW	1816	St Margaret Mary's School	Merrylands	\$670,099				

State	Client No.	Schools	Location	2000	2001	2002	2003	2004
NSW	1820	St Maroun's School	Dulwich Hill	\$250,000	\$550,000	\$100,000		
NSW	1825	St Mary's College	Gunnedah					
NSW	1827	St Mary Star of the Sea College	Wollongong					
NSW	1828	St Mary's Primary School	Bellingen					
NSW	1830	St Mary's Dominican High School	Maitland					
NSW	1831	All Saints Catholic Girl's College	Liverpool					
NSW	1832	St Mary's High School	Gateshead					
NSW	1833	St Mary's Central School	Wellington					
NSW	1844	Rosebank College	Five Dock					
NSW	1850	St Mary's High School	Casino	\$565,153				
NSW	1852	St Mary's School	Crookwell				\$280,513	\$280,513
NSW	1853	St Mary's School (Dubbo North)	DUBBO		\$965,106	\$7,284		
NSW	1854	St Mary's School	Ersineville					
NSW	1856	St Mary's School	Hay					
NSW	1860	St Mary's School	Moruya					
NSW	1863	St Mary's Primary School	Orange East					
NSW	1865	St Mary's Primary School	Scone	\$100,000				
NSW	1867	St Mary's School	Warren					
NSW	1869	St Mary's Primary School	Young			\$246,536		

State	Client No.	Schools	Location	2000	2001	2002	2003	2004
NSW	1870	St Mary's Star of the Sea Primary School	Hurstville					
NSW	1872	St Mary's War Memorial School	West Wyalong		\$44,333			
NSW	1873	St Matthew's Central School	Mudgee					
NSW	1876	St Mel's Primary School	Campsie					
NSW	1879	St Michael's Regional High School	Wagga Wagga					
NSW	1881	St Michael's School	Belfield					
NSW	1882	St Michael's School	Blacktown South					
NSW	1889	St Michael's School	Mittagong					
NSW	1893	St Michael's School	Thirroul					
NSW	1897	St Nicholas' School	Tamworth					
NSW	1899	St Patrick's College	Goulburn					
NSW	1903	St Patrick's Primary School	Asquith					
NSW	1909	St Patrick's Parish School	Albury					
NSW	1915	St Patrick's School	Brewarrina					
NSW	1916	St Patrick's Primary School	Cessnock West					
NSW	1918	St Patrick's School	Griffith					
NSW	1919	St Patrick's Primary School	Guildford					
NSW	1922	St Patrick's School	Lithgow				\$676,465	
NSW	1923	St Patrick's Primary School	Macksville					

State	Client No.	Schools	Location	2000	2001	2002	2003	2004
NSW	1926	St Patrick's Primary School	Summer Hill					
NSW	1929	St Patrick's School	Trundle		\$256,696			
NSW	1931	St Patrick's Primary School	Wallsend					
NSW	1935	St Paul's College	Walla Walla		\$520	\$130,000	\$549,480	
NSW	1939	St Paul's Primary School	Camden					
NSW	1940	St Paul's Primary School	Gateshead			\$1,515,686		
NSW	1946	St Peter Chanel Primary School	Regents Park					
NSW	1947	St Peter's Primary School	Coleambally					
NSW	1948	St Peter's Primary School	Stockton					
NSW	1951	St Philomena's School	Moree	\$558,650				
NSW	1957	St Pius X School	Unanderra					
NSW	1958	St Pius X Primary School	Windale					
NSW	1960	St Raphael's Primary School	Hurstville					
NSW	1962	Our Lady Queen of Peace School	Greystanes	\$977,043	\$591,897			
NSW	1966	St Therese School	Sadleir	\$1,179,700				
NSW	1969	St Therese' School	Lakemba					
NSW	1974	St Therese's Primary School	Yenda					
NSW	1979	St Thomas' Beckett Primary School	Lewisham					
NSW	1980	St Thomas More's School	Brighton-Le-Sands					

State	Client No.	Schools	Location	2000	2001	2002	2003	2004
NSW	1987	St Vincent's College	Potts Point					
NSW	1989	St Vincent's School	Ashfield			\$1,159,853		
NSW	1993	St Xavier's School	Gunnedah					
NSW	1994	St Francis Xavier's School	Narrabri	\$324,727				
NSW	2000	Blue Hills College	Goonellabah					
NSW	2004	Mountain View Adventist College	Doonside					\$100,000
NSW	2006	Mullumbimby Seventh Day Adventist School	Mullumbimby					
NSW	2007	Tweed Valley College	Murwillumbah					\$150,000
NSW	2009	St Paul's Catholic College	Greystanes					
NSW	2012	Stella Maris College	Manly			\$300,000		
NSW	2013	Stella Maris School	Shellharbour					
NSW	2014	Sydney Church of England Girls' Grammar School	Darlinghurst					
NSW	2015	Sydney Church of England Co-Educational Grammar School, Redlands	Cremorne					
NSW	2023	Calrossy School	Tamworth	\$306,886	\$122,594			
NSW	2024	Tara Anglican School for Girls	North Parramatta					
NSW	2025	St Clare's High School	Taree					
NSW	2030	The Scots School	Bathurst					
NSW	2033	Trinity Senior High School	Wagga Wagga					
NSW	2035	Tyndale Christian School	Blacktown				\$200,000	

State	Client No.	Schools	Location	2000	2001	2002	2003	2004
NSW	2115	St Paul's College	West Kempsey		\$987,346	\$77,967		
NSW	2118	St Therese's Primary School	New Lambton					
NSW	2119	St Therese's Community School	Wilcannia	\$30,680				
NSW	2198	Caroline Chisholm College	Glenmore Park		\$507,256			
NSW	2220	St Mary's Primary School	Norville	\$279,815				
NSW	2242	St Mary's Primary School	Casino					
NSW	2243	St John's Primary School	Mullumbimby					
NSW	2253	Kamaroi Rudolf Steiner School	Belrose					
NSW	2268	St Joseph's College	Lochinvar					
NSW	2301	Christian Community High School	Regents Park	\$250,000				
NSW	2303	John Wycliffe Christian School	Warrimoo					
NSW	2306	St Thomas Aquinas' School	Bowral					
NSW	2308	Goulburn Seventh Day Adventist School	Kenmore					
NSW	2315	St Francis Xavier's School	Lurnea					
NSW	2318	Hennessy Catholic College	Young			\$177,860		
NSW	2320	St Luke's College	Dee Why					
NSW	2322	James Sheahan Catholic High School	Orange					
NSW	2334	Mamre Christian College	Erskine Park					
NSW	2338	Tambelin Independent School	Goulburn				\$45,000	

State	Client No.	Schools	Location	2000	2001	2002	2003	2004
NSW	2339	Linuwel School Ltd	East Maitland					
NSW	2341	Holy Family School	Kelso					
NSW	2344	Good Shepherd School	Plumpton				\$264,851	\$600,000
NSW	2345	St Columba's High School	Springwood					
NSW	2349	St Thomas More School	Campbelltown					
NSW	2352	Covenant Christian School	Belrose		\$209,603	\$90,397		
NSW	2355	Bethel Christian School	Mount Druitt				\$215,000	
NSW	2356	Kindalin Christian School	Castlereagh	\$430,000	\$40,000		\$160,000	
NSW	2358	Pacific Hills Christian School	Dural					
NSW	2360	John Therry Catholic High School	Rosemeadow					
NSW	2362	Arkana College	Kingsgrove					
NSW	2363	Highfields Preparatory & Kindergarten School Limited	Lindfield					
NSW	2364	Mirriwinni Gardens Aboriginal Academy	Bellbrook	\$8,742	\$16,500	\$197,000		
NSW	2369	Coverdale Christian School	Riverstone	\$200,000				
NSW	2372	Nowra Christian Community School	Nowra					
NSW	2373	Calvary Chapel Christian School	Georges Hall					
NSW	2374	The Newcastle Rudolf Steiner School	Glendale					
NSW	2380	Toongabbie Christian School Ltd	Toongabbie		\$375,000			
NSW	2381	Coffs Harbour Christian Community School	Bonville		\$260,000			

State	Client No.	Schools	Location	2000	2001	2002	2003	2004
NSW	2382	Lindisfarne Anglican School	Terranora	\$350,000		\$50,000	\$350,000	
NSW	2383	Northcross	Ryde				\$40,750	
NSW	2384	Hunter Christian School	Mayfield					
NSW	2385	Orange Christian School	Orange					
NSW	2386	Tuntable Falls Community Primary School	Via Nimbin					
NSW	2387	St Joseph's Regional High School	Albion Park		\$638,994			
NSW	2390	Northern Beaches Christian School	Terrey Hills		\$200,000			
NSW	2391	Penrith Christian Community School	Orchard Hills		\$135,000	\$65,000	\$300,000	
NSW	2392	St Agnes' Primary School	Port Macquarie					
NSW	2393	Masada College High School	St Ives		\$350,000			
NSW	2395	Inaburra School	Bangor					
NSW	2398	Gosford Christian School	Narara					
NSW	2399	Mount Sinai College	Maroubra	\$450,000				
NSW	3010	Elouera Special School	Cootamundra		\$10,000		\$70,000	
NSW	3015	Inala Rudolf Steiner School for Curative Education	Cherrybrook					
NSW	3018	Kingsdene Special School	Telopea			\$70,000		
NSW	3044	Sylvanvale School	Kirrawee				\$100,000	\$22,000
NSW	3048	Vern-Barnett School for Autistic Children	Forestville					
NSW	3049	Wairrah Village Rudolf Steiner School for Curative Education	Dural	\$13,015				

State	Client No.	Schools	Location	2000	2001	2002	2003	2004
NSW	3302	Chrysalis School for Rudolf Steiner Education	Thora					
NSW	3303	St George Christian School	Hurstville					
NSW	3311	Marion Primary School	Horsley Park					
NSW	3312	Illawarra Christian School	Cordeaux Heights					
NSW	3313	Blue Mountains Christian School	Blackheath					
NSW	3315	Green Point Christian College	Green Point				\$250,000	
NSW	3317	St Philip's Christian College	Waratah			\$114,000		
NSW	3319	Wellington Christian School	Wellington					
NSW	3321	Carinya Christian School (Gunnedah)	Gunnedah					
NSW	3324	Belmont Christian College	Belmont					
NSW	4021	Tangara School for Girls	Cherrybrook			\$150,000		
NSW	4026	Holy Spirit College	Bellambi					
NSW	4061	Southside Montessori School	Riverwood					
NSW	4062	Dubbo Christian School	Dubbo		\$100,000	\$100,000		
NSW	4066	Cedars Christian College	Farmborough Chase		\$350,000	\$50,000		
NSW	4067	Heritage Christian School	Port Macquarie				\$200,000	
NSW	4068	Bowral Rudolf Steiner School	Bowral		\$310,000			\$100,000
NSW	4069	St Paul's High School	Booragul	\$910,000	\$1,505,229			
NSW	4071	Kuyper Christian School	North Richmond	\$450,000	\$85,000			

State	Client No.	Schools	Location	2000	2001	2002	2003	2004
NSW	4078	St Paul's Grammar School Penrith	Cranebrook					
NSW	4079	Terrigal School for Autistic Children	Terrigal					\$100,000
NSW	4090	The Emanuel School	Randwick	\$200,000				
NSW	4091	Maitland Christian School	Melford	\$216,000				
NSW	4101	Catholic System NSW	Sydney					
NSW	4201	St Spyridon College	Kingsford					
NSW	4203	St John's Primary School	Gilgandra					
NSW	4204	Sacred Heart Primary School	Mt Druitt South					
NSW	4205	Mater Dei College	Tuggerah					
NSW	4214	Southern Highlands Christian School	Bowral					
NSW	4215	Blue Mountains Steiner School	Hazelbrook			\$120,000		
NSW	4221	St Charbel's College	Punchbowl					
NSW	4222	The McDonald College	North Strathfield		\$200,000			
NSW	4224	Nepean District Christian School	Mulgoa					
NSW	4254	Oxford Falls Grammar School	Oxford Falls	\$200,000	\$225,727	\$174,273		
NSW	4256	The International Grammar School	Ultimo					
NSW	4258	Kangia Steiner School	Murwillumbah					
NSW	4259	Aurora Meander a School for Rudolf Steiner Education	Yarramundi					
NSW	4261	Redeemer Baptist School	North Parramatta	\$400,000				

State	Client No.	Schools	Location	2000	2001	2002	2003	2004
NSW	4262	Moree Christian Community School	Moree		\$110,000			
NSW	4263	Carinya Christian School	Tamworth		\$240,000	\$250,000	\$290,000	
NSW	4266	Namoi Valley Christian School	Wee Waa				\$226,000	
NSW	4272	Macarthur Region Anglican Church School	Cobbitty			\$200,000		
NSW	5268	Trinity Catholic College	Lismore					
NSW	5274	Macquarie University Special Education Centre	North Ryde					
NSW	5278	Essington Christian Academy	Westmead					
NSW	5293	Taree Christian Community School	Taree	\$115,000		\$400,000		
NSW	5294	Murwillumbah Christian College	Dungay					
NSW	5347	William Carey Christian School	Prestons		\$110,000			
NSW	5350	East Sydney Community-Based High School	Darlinghurst				\$64,000	
NSW	5351	Freeman Catholic College	Bonnyrigg					
NSW	5352	Mary Immaculate Primary School	Bossley Park					
NSW	5355	Holy Spirit Primary School	St Clair					
NSW	5357	Northside Montessori School	Turrumurra		\$200,000			
NSW	5373	Yeshiva High School	Bondi					
NSW	5382	Mullumbimby Christian Community College	Mullumbimby					
NSW	5454	Mullumbimby Christian School	Mullumbimby		\$209,000		\$20,000	
NSW	5455	St John Vianney Primary School	Doonside					

State	Client No.	Schools	Location	2000	2001	2002	2003	2004
NSW	5492	Broughton Anglican College	Campbelltown					
NSW	5527	Mount Carmel High School	Varroville					
NSW	5530	Berowra Christian Community School	Berowra			\$150,000		
NSW	5539	St Mary's Catholic Primary School	Eagle Vale					
NSW	5540	McCarthy Catholic College	Emu Plains				\$1,286,850	
NSW	5541	Bede Polding College	South Windsor					
NSW	5598	Daystar School for Rudolf Steiner Education	Lillian Rock Via Kyogle					
NSW	5611	Hamazkaine Arshak and Sophie Galstaun School	Ingleside					
NSW	5763	Autistic Association	Forestville		\$28,000			
NSW	5904	Holy Family Primary School	Menai					
NSW	5993	Casuarina Steiner School	Coffs Harbour					
NSW	6733	All Saints Catholic Senior College	Casula					
NSW	6734	Quakers Hill Parish Primary School	Quakers Hill					
NSW	6735	Corpus Christi Primary School	Cranebrook					
NSW	6736	St Madeleine's Primary School	Kenthurst					
NSW	6737	Corpus Christi College	Tuggerah					
NSW	6738	Vistara Primary School	Richmond Hill					
NSW	6739	The William Branwhite Clarke College	Kellyville					
NSW	6741	Tallowood School	Bowraville	\$78,000				

State	Client No.	Schools	Location	2000	2001	2002	2003	2004
NSW	6747	Illawarra School for Autistic Children	Corrimal			\$37,000	\$6,000	
NSW	6748	Malek Fahd Islamic School	Greenacre			\$200,000		
NSW	6751	Cape Byron Rudolf Steiner School	Ewingsdale					
NSW	6776	Marian College	Kenthurst					
NSW	6844	Our Lady Help of Christians Primary School	Rosemeadow					
NSW	6879	The Armidale Waldorf School	Armidale					
NSW	7126	Hopetown Special School	Wyong					
NSW	8773	Mumbulla School for Rudolf Steiner Education	Bega					
NSW	8776	Bankstown Grammar School	Georges Hall				\$84,150	
NSW	8790	St John Fisher Primary School	Tumbi Umbi					
NSW	8793	Singleton Christian College	Singleton					
NSW	8818	Joseph Varga School	Randwick					
NSW	8882	Emmaus Catholic College	Ersine Park					
NSW	13178	St John the Evangelist High School	Nowra					
NSW	13179	Mater Dei Catholic School	Wagga Wagga					
NSW	13276	Byron Community Primary School	Byron Bay	\$180,000				
NSW	13283	The Garfield Barwick School	North Parramatta					
NSW	13299	Sacred Heart College	Broken Hill					
NSW	13321	Cornerstone Community Schools - Pera Bore, Bourke	Bourke	\$15,000		\$130,000	\$285,000	

State	Client No.	Schools	Location	2000	2001	2002	2003	2004
NSW	13329	Al Noori Muslim Primary School	Greenacre					
NSW	13344	John the Baptist Primary School	Bonnyrigg					
NSW	13345	St Brendan's Primary School	Lake Munmorah		\$721,508	\$144,374		
NSW	13347	Inner City Montessori Primary School	Balmain			\$100,000	\$75,000	
NSW	13348	St Euphemia College	Bankstown					
NSW	13391	Wagga Wagga Christian College	Wagga Wagga				\$250,000	
NSW	13401	Arndell College	Oakville	\$250,000				
NSW	13412	Hunter Valley Grammar School	Ashtonfield NSW					
NSW	13415	Holy Cross Primary School	Kincumber		\$718,490			
NSW	13416	All Saints Greek Orthodox Grammar School	Lakemba	\$104,301				
NSW	13420	Holy Family Primary School	Luddenham					
NSW	13426	Bishop Druitt College	Coffs Harbour					
NSW	13430	Shoalhaven Anglican School	Milton					
NSW	13436	King Abdul Aziz College	Rooty Hill	\$350,000			\$250,000	
NSW	13440	St Joseph's College	Banora Point				\$344,900	
NSW	13441	St Francis of Assisi Primary School	Glendenning					
NSW	13442	Clare Catholic High School	Hassall Grove	\$774,854				
NSW	13444	Loyola College	Mt Druitt					
NSW	13652	St Joseph's School	Glen Innes					

State	Client No.	Schools	Location	2000	2001	2002	2003	2004
NSW	13653	Catherine McAuley College	Grafton				\$3,126,879	\$500,000
NSW	13773	Trinity Catholic Primary School	Erskine Park					
NSW	13802	Scone Grammar School	Scone			\$250,000	\$10,000	
NSW	13839	McAuley Catholic Central School	Tumut					
NSW	13845	St Laurence's School	Forbes					
NSW	13853	St Gregory's Primary School	Queanbeyan					
NSW	13863	All Saints College	Maitland				\$828,917	\$500,000
NSW	13864	Aquinas College	Menai					
NSW	13951	Richmond Christian College	Ballina			\$200,000		\$125,000
NSW	13981	St Peter's Primary School	Port Macquarie	\$352,592				
NSW	13984	St Clare's Primary School	Narellan Vale					
NSW	13985	Wyong Christian Community School	Wyong			\$400,000		
NSW	13988	Bethany Catholic Primary School	Glenmore Park					
NSW	13989	Chisholm Catholic Primary School	Bligh Park					
NSW	13990	Bethany College	Hurstville					
NSW	14013	St Francis Xavier Primary School	Woolgoolga					
NSW	14041	Central Coast Rudolf Steiner School	North Gosford		\$300,000			
NSW	14145	Lakes Anglican Grammar School	Summerland Point					
NSW	14211	Obadiah Christian College	Johns River					

State	Client No.	Schools	Location	2000	2001	2002	2003	2004
NSW	14239	St Mark's Coptic Orthodox College	Wattle Grove					
NSW	14279	Bega Valley Christian College	Bega	\$220,000	\$400,000			
NSW	14289	Hawkesbury Independent School	Kurrajong		\$115,000			
NSW	14293	Sheanwater, The Mullumbimby Steiner School	Mullumbimby	\$100,000	\$460,000		\$350,000	
NSW	14309	Nirimba Catholic Senior High School	Quakers Hill					
NSW	14313	St Joseph's Primary School	Wagga Wagga	\$66,821				
NSW	14314	Lakeside Christian College	Tweed Heads				\$50,000	\$250,000
NSW	14329	Carroll College Broulee	Broulee	\$846,529				
NSW	14350	Manning River Steiner School	Taree					
NSW	14376	St Philip's Christian College - Port Stephens	Salamander Bay			\$300,000	\$100,000	
NSW	14477	Trinity Catholic College	Auburn					
NSW	14493	St Paul's High School	Port Macquarie	\$909,819				
NSW	14562	Casino Christian School	North Casino					
NSW	14564	Illawarra Christian School	Cordeaux Heights	\$280,000			\$200,000	
NSW	14565	Mt Carmel Central School	Yass					
NSW	14581	Eurobodalla Christian Community School	Long Beach				\$150,000	
NSW	14601	St James Primary School	Yamba					
NSW	14602	Holy Family Catholic Primary School	Skennars Head	\$753,756				
NSW	14621	Terra Sancta College (Schofields)	Schofields	\$1,225,261			\$254,987	

State	Client No.	Schools	Location	2000	2001	2002	2003	2004
NSW	14622	St Joseph's Primary School (Schofields)	Schofields					
NSW	14651	Al Zahra College	Arncliffe	\$100,000	\$200,000			
NSW	14661	Nazareth Catholic Primary School	Shellharbour City		\$869,738		\$336,946	\$336,947
NSW	14815	Cornerstone Community Schools - Burrabadine, Dubbo	Dubbo				\$10,000	
NSW	15309	Sule College	Prestons	\$300,000	\$400,000	\$250,000	\$250,000	
NSW	15380	Penrith Anglican College	Orchard Hills	\$271,000	\$226,000	\$74,000		
NSW	15383	Minimbah Primary School	East Armidale			\$249,000		
NSW	15403	Al Faisal College	Auburn			\$350,000		
NSW	15429	Good Samaritan Catholic College	Hinchinbrook		\$2,698,630	\$1,812,245	\$1,136,174	\$500,000
NSW	15431	Good Shepherd Primary School	Hoxton Park	\$796,290				
NSW	15625	Giant Steps Sydney Ltd	Gladesville	\$25,000			\$200,000	
NSW	15679	Jervis Bay Christian Community School	Vincentia				\$105,000	
NSW	15684	Al Amanah College	Bankstown			\$300,000		
NSW	15716	Emmanuel Anglican College	West Ballina			\$300,000		
NSW	15795	Magdalene Catholic High School	Narellan		\$1,050,000	\$1,010,090	\$1,305,897	\$331,654
NSW	15811	Mount Annan Christian College	Mount Annan		\$200,000		\$350,000	\$200,000
NSW	15942	South East Sydney School for Children With Autism	Peakhurst	\$74,000				
NSW	16047	The Yeshiva College	Dover Heights		\$75,000			
NSW	16048	Xavier Catholic College	Skennars Head		\$2,310,229		\$1,065,634	\$500,000

State	Client No.	Schools	Location	2000	2001	2002	2003	2004
NSW	16052	Lake Macquarie Christian College	Fassifern	\$100,000	\$40,000		\$205,000	
NSW	16091	Cessnock Christian School	Cessnock		\$14,000			
NSW	16099	St Andrew's Christian Community School	Grafton					\$250,000
NSW	16144	St Andrew's College	Marayong			\$1,000,000	\$18,810	
NSW	16320	St Catherine of Siena Primary School	Prestons	\$46,173		\$1,283,336	\$280,160	\$280,157
NSW	16321	Holy Spirit College	Lakemba	\$788,621				
NSW	16322	Xavier College	Cranebrook			\$2,587,861	\$1,777,187	
NSW	16455	Medowie Christian School	Medowie		\$200,000		\$100,000	\$100,000
NSW	16514	Matthew Hogan School	Canyonleigh	\$50,000		\$130,000		
NSW	16520	Bishop Tyrrell Anglican College	Fletcher			\$250,000	\$100,000	\$250,000
NSW	16526	The Riverina Anglican College	Wagga Wagga					\$200,000
NSW	16588	William Cowper Anglican School	Tamworth			\$300,000		\$200,000
NSW	16700	The Coast Christian School	Bensville					\$100,000
NSW	16701	Holy Saviour School	Greenacre			\$167,392	\$418,428	
NSW	16721	Richard Johnson Anglican School	Oakhurst			\$300,000		
NSW	16722	Penrith Anglican College	Orchard Hills					\$200,000
NSW	16955	Nowra Anglican College	Bomaderry				\$100,000	\$245,000
NSW	16956	Thomas Hassall Anglican College	West Hoxton			\$201,200	\$98,800	\$250,000
NSW	17022	McCarthy Catholic College	Tamworth			\$2,732,724	\$512,600	

State	Client No.	Schools	Location	2000	2001	2002	2003	2004
NSW	17159	Rouse Hill Anglican College	Rouse Hill				\$100,000	
NSW	17177	Wagga Wagga Catholic High School	Wagga Wagga			\$1,864,663	\$3,040,154	\$517,918
NSW	17280	Lumen Christi Catholic College	Pambula Beach			\$1,063,378		
NSW	17384	MacKillop Catholic College	Warnervale			\$1,496,423	\$537,338	\$537,339
NSW	17385	Holy Family Parish Primary School	Emerton				\$729,855	
		TOTAL:		\$27,767,185	\$28,728,812	\$29,408,353	\$28,427,699	\$10,469,107

NOTES: 1. Indicated grants for 2004 are the forward commitment of ongoing projects only. The balance of the 2004 capital funding for NSW non-government schools will be allocated at the end of 2003.

2. The total of approved grants to NSW non-government schools in any year does not necessarily match

the total funding allocation for that year as projects may extend over several years, projects

may be funded from interest earned, and some of the funding allocation is used for administrative costs.

Attachment B

	State	Reasons for Grant	Amount of Grant
2000 Program Year			
1	NSW	Small rural community school – problems caused by economic downturn in local region. Significant cash flow difficulties. Grant provided to assist with deficit.	\$62,585
2	NSW	Rural boarding school experiencing downturn in enrolments caused by the economic downturn in the school's main catchment area. Significant cash flow difficulties. Grant provided to assist with deficit.	\$200,000
3	NSW	Rural boarding school experienced a marked decline in enrolments, and income, over past years. It attributed this decline in enrolment numbers to the downturn in the rural economy. Some loss in income from reduction in number of full fee paying overseas students. Grant provided to assist with deficit.	\$540,124
4	NSW	Small school that experienced a marked decline in enrolments and consequent loss in cash flow. Grant provided to assist with immediate cash flow.	\$120,000
5	NSW	Co-educational boarding school experiencing financial problems driven by a marked decline in enrolments due to the economic downturn in rural Australia. Grant provided to assist with immediate cash flow.	\$166,000
6	NSW	Indigenous day school with financial crisis driven by a dramatic downturn in its fee collection rate as well as the discovery of outstanding tax liabilities owed by the school. STEA Grant made to assist with outstanding liabilities and to implement recovery plan.	\$69,000
7	NSW	A series of unexpected staffing related problems placed an unusually high burden on the school's financial resources. The school's financial crisis was further exacerbated by the NSW Government decision to reduce funding for schools in funding categories 1 - 3. The school is receiving increases under the SES funding model. Grant provided to assist with deficit.	\$14,298
2001 Program Year			
8	NSW	Significant cash flow difficulties with decreased enrolments due to rural economic conditions. Some impact also from decline in full fee paying overseas students. Grant to assist with immediate cash flow and implement Business and Recovery Plan.	\$129,464
9	NSW	Small rural school suffering loss in enrolments and income due to staffing problems. Grant to assist with immediate cash flow and to implement Business and Recovery Plan and with restructuring of the school's operations.	\$175,000

10	NSW	Small rural school suffering loss in enrolments and income due to staffing problems. Grant to assist with immediate cash flow and implement Business and Recovery Plan.	\$80,000
11	NSW	Rural boarding school suffering a loss in income due to decline in enrolments, particularly boarding students, and decrease in NSW Government funding to Category 1-3 schools. Decline in enrolments due to decline in rural economic conditions. School will receive increased funding under SES funding model. Grant provided to assist with deficit and implement Recovery Plan.	\$150,000
12	NSW	Rural Indigenous primary school facing cash flow crisis. Some significant underlying problems that included a lack of financial expertise in the school's management and some flaws in the internal financial control procedures at the school. The STEA grant was made to assist with cash flow crisis and with restructuring of school's management procedures.	\$149,000
13	NSW	Rural boarding school suffering a loss in income due to decline in enrolments, particularly boarding students. Decline in enrolments due to decline in rural economic conditions. School will receive increased funding under SES funding model. Grant provided to assist with deficit and to implement Recovery Plan.	\$200,000
14	NSW	Special school facing operating deficits and cash flow difficulties due to a sudden decrease in private income. Grant provided to assist with deficit and to implement two-year Recovery Plan including a restructuring of its operations.	\$116,000
15	NSW	Large city school with cash flow difficulties due to downturn in its fee collection rates, decrease in primary enrolments and unexpected increase in expenditures. Grant provided to assist with deficit and implement Recovery Plan.	\$300,000
2002 Program Year			
16	NSW	Special school facing operating deficits and cash flow difficulties due to a sudden decrease in private income. Grant provided to assist with deficit and to implement second year of Recovery Plan including a restructuring of its operations.	\$90,000
2003 Program Year			
	NSW	Nil	



Commonwealth Programmes for Schools - 2001

Project Evaluation Data

Literacy and Numeracy

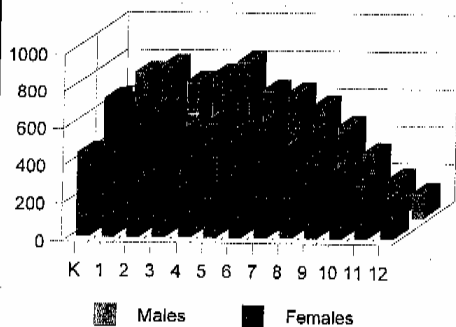
No. of Funded Projects: Literacy -262 Numeracy - 172

No. of Schools: Primary - 81 Secondary - 18 Combined - 140

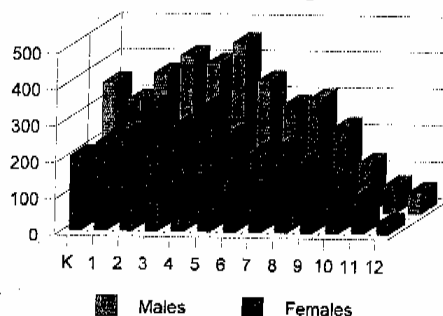
	Males	Females	Total
Literacy	7569	5253	12822
Numeracy	3792	2912	6703

Gender/Grade Distribution

Literacy



Numeracy



Commonwealth contribution to funded schools for Literacy/Numeracy - 2001:

\$4,376,593.23

No. of related Professional Development Activities undertaken by schools during 2001 -

1064

The Association of Independent Schools NSW



Commonwealth Programmes for Schools - 2001

Project Evaluation Data

Special Schools Component

No. of Funded Schools: 23

School	No. of Students	No. of Professional Development Activities
Bellhaven Special School	16	6
Biala Special School	12	2
Dale Christian School	3	4
Elouera Special School	13	2
Giant Steps	34	4
Inala Steiner School	15	3
Joseph Varga School	18	4
Key College	1	
Kingsdene	27	17
Macquarie University Spec Ed. Centre	33	11
Margaret Jurd Learning Centre	3	3
Matthew Hogan	9	0
SE Sydney School for Children with Autism	41	4
Illawarra School for Children with Autism	62	16
Newcastle School for Children with Autism	27	9
Terrigal School for Children with Autism	26	10
Wetherill Park School for Children with Autism	71	0
Sylvanvale School	22	2
The Alice Bettridge School	84	30
The Garfield Barwick School	18	5
Thomas Pattison School	11	2
Vern Barnett School	68	18
Warrah School	14	15
TOTAL	661	167

Commonwealth contribution through Commonwealth:
 Targeted Programmes funding to Special Schools

\$3,796,708.56

The Association of Independent Schools NSW



Commonwealth Programmes for Schools - 2001

Project Evaluation Data

Integration

No. of Funded Projects: 1148

No. of Schools: 206

Maximum Grant: \$3,444

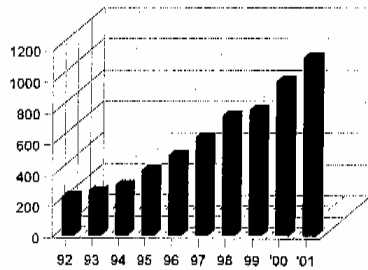
Minimum Grant: \$265

Average Grant: \$797

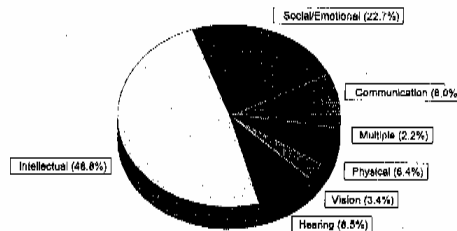
	Primary			Secondary	
	Male	Female		Male	Female
Kindergarten	62	27			
Year 1	73	32	Year 7	71	37
Year 2	61	30	Year 8	70	38
Year 3	72	37	Year 9	58	43
Year 4	64	33	Year 10	39	35
Year 5	65	34	Year 11	23	20
Year 6	57	31	Year 12	13	21

* 13 students transferred from one school to another during 2001

of Funded Students (1992-2001)



Disability Categories



Commonwealth contribution to funded schools for Integration: **\$1,009,788**

No. of related Professional Development Activities undertaken by schools during 2001: **388**

The Association of Independent Schools NSW



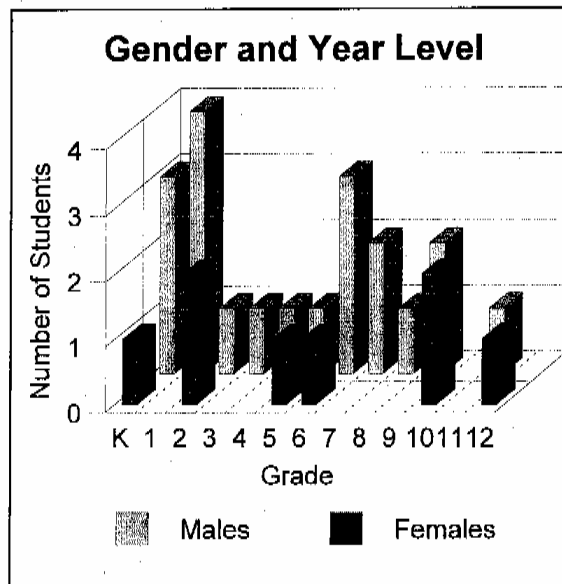
Commonwealth Targeted Programmes - 2001

Project Evaluation Data

Children with Severe Disabilities

No. of Funded Schools: 25

No. of Funded Students/Projects: 29 Male: 20 Female: 8



Commonwealth contribution to funded schools for Children with Severe Disabilities - 2001:

\$95,249

The Association of Independent Schools NSW



Commonwealth Programmes for Schools - 2001

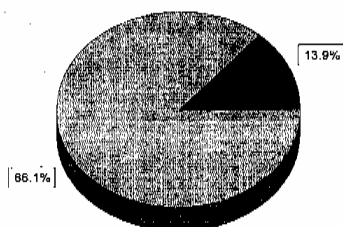
Project Evaluation Data

Special Schools Integration

No. of Funded Students: 137

Number of students expected to progress to Mainstream Schools by 2003: 118
by 2006: 19

Gender Distribution



■ Females ■ Males

Schools Funded:

- | | |
|---|--|
| Biala Special School | Giant Steps |
| Macquarie University Special Ed Centre | SE Sydney School for Children with Autism |
| Illawarra School for Children with Autism | Terrigal School for Children with Autism |
| Newcastle School for Children with Autism | Wetherill Park School for Children with Autism |
| The Garfield Barwick School | Thomas Pattison School |
| Vern Barnett School | |

Commonwealth contribution to funded schools in 2001: **\$32,378**

No. of related Professional Development Activities undertaken by schools during 2001: **32**

The Association of Independent Schools NSW



Commonwealth Programmes for Schools - 2002

Project Evaluation Data

Literacy and Numeracy

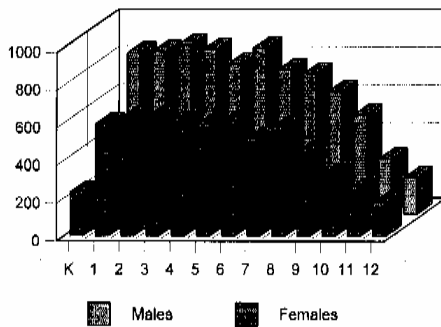
No. of Funded Projects: Literacy - 313 Numeracy - 206

Schools Levels: Primary only - 88 Secondary only - 19 Combined - 148

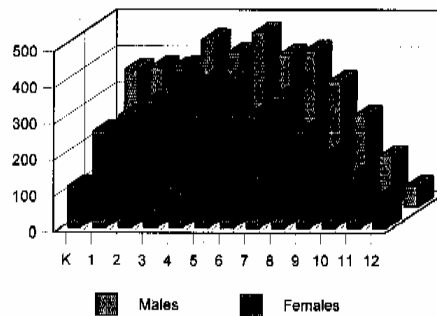
	Males	Females	Total
Literacy	8664	6201	14992
Numeracy	4356	3680	8036

Gender/Grade Distribution

Literacy



Numeracy



Commonwealth contribution to funded schools for Literacy/Numeracy - 2002:

\$4,616,863.33

No. of related Professional Development Activities undertaken by schools during 2002:

1,381

The Association of Independent Schools NSW



Commonwealth Programmes for Schools - 2002

Project Evaluation Data

Special Schools Component

No. of Funded Schools: 23

School	No. of Students Funded	No. of Professional Development Activities
Bellhaven Special School	16	-
Biala Special School	13	2
Dale Christian School	4	-
Elouera Special School	15	2
Giant Steps	43	11
Inala Steiner School	16	7
Joseph Varga School	17	32
Key College	1	-
Kingsdene	26	15
Macquarie University Spec Ed. Centre	38	10
Margaret Jurd Learning Centre	8	3
Matthew Hogan School	9	-
SE Sydney School for Children with Autism	41	14
Illawarra School for Children with Autism	56	24
Newcastle School for Children with Autism	32	-
Terrigal School for Children with Autism	35	10
Wetherill Park School for Children with Autism	72	35
Sylvanvale School	16	5
The Alice Bettridge School	84	-
The Garfield Barwick School	17	12
Thomas Pattison School	49	9
Vern Barnett School	74	48
Warrah School	19	10
TOTAL	701	249

Commonwealth contribution through Commonwealth: **\$3,998,790.82**
 Targeted Programmes funding to Special Schools

The Association of Independent Schools NSW



Commonwealth Programmes for Schools - 2002

Project Evaluation Data

Integration

No. of Funded Projects: 1291

No. of Schools: 286

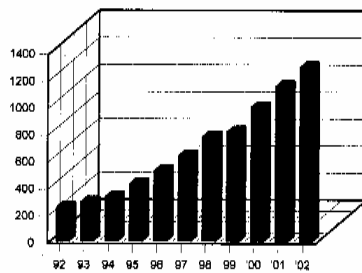
Maximum Grant: \$3,119.71

Minimum Grant: \$283.61

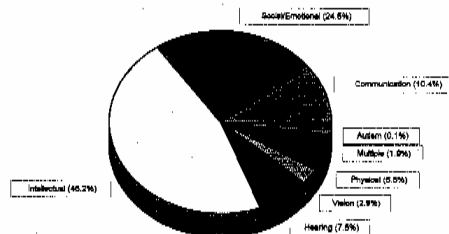
Average Grant: \$839.49

	Primary		Secondary	
	Male	Female	Male	Female
Kindergarten	29	17		
Year 1	82	26	Year 7	65
Year 2	87	38	Year 8	83
Year 3	77	38	Year 9	78
Year 4	81	40	Year 10	60
Year 5	75	41	Year 11	25
Year 6	65	44	Year 12	18

of Funded Students (1992-2002)



Disability Categories



Commonwealth contribution to funded schools for Integration:

\$1,074,262.20

No. of related Professional Development Activities undertaken by schools during 2002:

473

The Association of Independent Schools NSW



Commonwealth Targeted Programmes - 2002

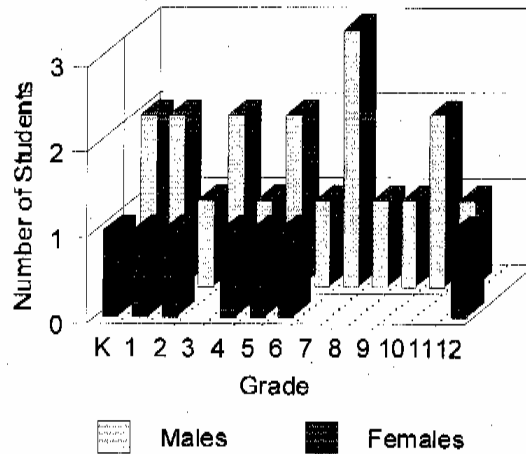
Project Evaluation Data

Children with Severe Disabilities

No. of Funded Schools: 21

No. of Funded Students/Projects: 24 Male: 18 Female: 6

Gender and Year Level



Commonwealth contribution to funded schools for
Children with Severe Disabilities - 2002:

\$90,593.10

The Association of Independent Schools NSW



Commonwealth Programmes for Schools - 2002

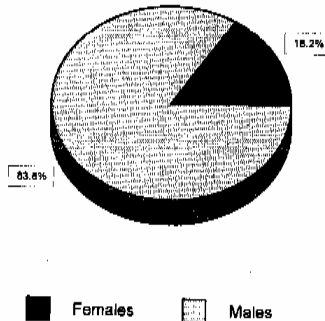
Project Evaluation Data

Special Schools Integration

No. of Funded Students: 154

Number of students expected to progress to Mainstream Schools by 2004: 137
by 2007: 17

Gender Distribution



Schools Funded:

- | | |
|--|---|
| Elouera Special School | Giant Steps |
| SE Sydney School for Children with Autism | Illawarra School for Children with Autism |
| Terrigal School for Children with Autism | Newcastle School for Children with Autism |
| Wetherill Park School for Children with Autism | The Garfield Barwick School |
| Thomas Pattison School | Vern Barnett School |
| Warrah School Society | |

Commonwealth contribution to funded schools in 2002: \$34,441.22

No. of related Professional Development Activities undertaken by schools during 2002: 39

The Association of Independent Schools NSW