

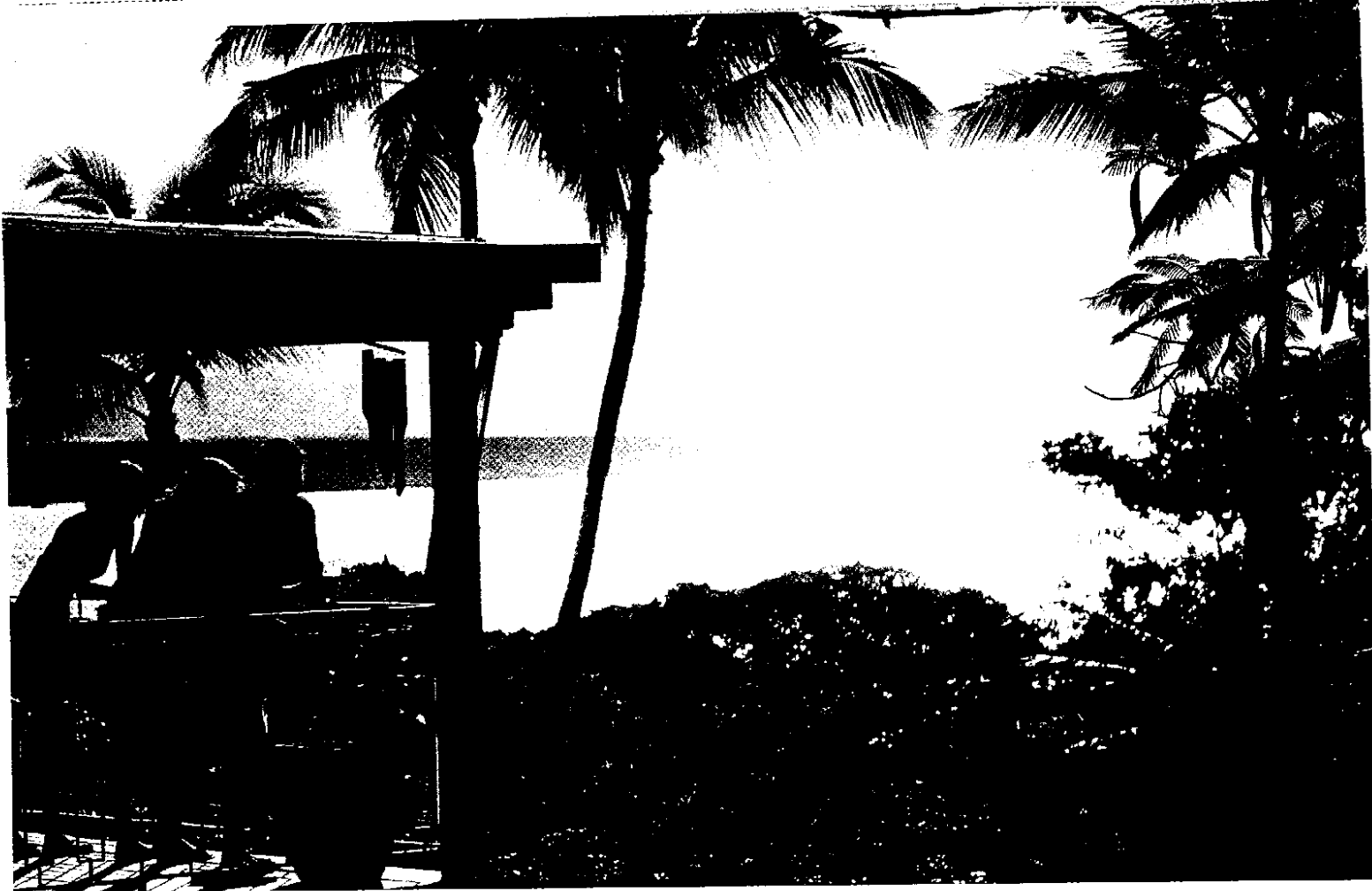


Australia  
A different light

A place like nowhere else on earth



[www.australia.com](http://www.australia.com)



#### AUSTRALIAN CAPITAL TERRITORY

Canberra is the country's political heart, combining natural flora and fauna and a relaxed lifestyle like no other capital city in the world. No trip to Australia is complete without visiting its architecturally acclaimed Parliament House and National Museum, internationally envied Institute of Sport or its abundant native animals that can be seen in their natural habitat just minutes from the city's centre. An overnight visit allows you to enjoy Canberra's café strips and a morning hot-air balloon ride over the city's central focus, Lake Burley Griffin.

For further information visit [www.canberraconvention.com.au](http://www.canberraconvention.com.au)

#### NEW SOUTH WALES

Sydney is a vibrant, cosmopolitan harbour city with spectacular natural beauty and a free-spirited outdoor lifestyle. Experience one of the world's most famous waterways – Sydney Harbour – while sailing on a yacht, luxury cruise or climbing a world famous icon – the Sydney Harbour Bridge. Sydney's diversity ensures its appeal for visitors, whether visitors are enjoying a symphony in the Opera House, a stroll through the maze of cobblestone streets in the historic Rocks, exclusive shopping precincts or dining at a harbour side restaurant. Venture less than a few hours outside Sydney and explore the majestic Blue Mountains, or sample wines from one of Australia's premier wine regions – the Hunter Valley. Further afield, you will find coastlines perfect for water sports, or the occasional whale spotting.

For further information visit [www.scvb.com.au](http://www.scvb.com.au)

#### NORTHERN TERRITORY

Australia's Outback Northern Territory is known for the world-recognised Ayers Rock (Uluru) in the heart of Australia and Kakadu the World Heritage listed National

Park in the Top End of Australia. The Red Centre is also home to Alice Springs, a modern outback centre and gateway to Kings Canyon, Rainbow Valley and the stunning MacDonnell Ranges. In the Top End, just four hours flying time to Singapore, is Darwin, a tropical and multicultural city with easy access to stunning National Parks, rich wildlife, ancient Aboriginal rock art, and great fishing. Access to Darwin, Alice Springs and Uluru is via frequent domestic flights from most ports in Australia or for an adventure by train, try the legendary Ghan.

For further information visit [www.ntconventions.com.au](http://www.ntconventions.com.au)

#### QUEENSLAND

A socially stable hub for Asia-Pacific business and government, sub-tropical Brisbane has a thriving restaurant and café scene. Brisbane's nightlife is 'thriving', says *Lonely Planet*. Its meeting, transport and accommodation infrastructure are competitively priced.

The nearby Gold Coast has blue waters on golden sands, many activities, golfing, dazzling nightlife and wondrous subtropical rainforests. It is a place that is easy to get to, famous for its brilliant sunshine, superb weather and stunning landscapes of ocean, waterways and rainforests. Further North, enjoy pristine sandy beaches, rainforests, gourmet produce, golf and spa resorts and villages brimming with creative arts around the Sunshine Coast.

Cairns and the Great Barrier Reef region provides access to World Heritage reefs, rainforest and the uniquely Australian outback. A few hours south, Townsville is Australia's centre of tropical excellence and is bordered by the Great Barrier Reef, tropical islands and outback towns. In the Whitsundays, indulge in resort luxury, surrounded by 74 tropical islands, Whitehaven Beach and Heart Reef, just a two-hour flight from Sydney.

# Enjoy the real Australia

While you're here, relax and see the country.

Take the time to explore the experiences Australia has to offer. Discover the magic of the outback, the beautifully rugged Australian bush, the endless beaches, the sophisticated cities, and enjoy the warm Australian hospitality.

Whatever you choose to experience, you'll discover it in Australia.



For more information on specific areas of Queensland visit any of the following websites:

Brisbane – [www.meetinbrisbane.com.au](http://www.meetinbrisbane.com.au)  
Cairns & Region – [www.cairnsconventionbureau.com](http://www.cairnsconventionbureau.com)  
Gold Coast – [www.goldcoasttourism.com.au](http://www.goldcoasttourism.com.au)  
Sunshine Coast – [www.sunshinecoast.org](http://www.sunshinecoast.org)  
Townsville – [www.townsvilleonline.com.au](http://www.townsvilleonline.com.au)  
Whitsundays Islands – [www.whitsundaytourism.com](http://www.whitsundaytourism.com)

## **SOUTH AUSTRALIA**

Adelaide is one of Australia's most gracious and spacious cities. Every two years the city plays host to a world-renowned arts and fringe-arts festival, The Adelaide Festival. The lifestyle is unhurried and there are wonderful cafes, restaurants and markets. Head out of town and watch whales frolic in their natural environment on the beautiful Eyre Peninsula; visit the wineries of the Barossa and Clare Valleys; take in the sounds, colours and feel of Australia's rich and majestic outback in the Flinders Ranges; and discover spectacular opals at the mining town of Coober Pedy.

For further information visit [www.acta.com.au](http://www.acta.com.au)

## **TASMANIA**

Tasmania is a mixture of pristine wilderness, grand convict-built architecture, fine wine and food, creative arts and crafts, bustling markets and leisurely historic towns. Delight in the pleasures of Hobart, the finishing point for the famous Sydney to Hobart yacht race or base yourself in Launceston and wander along the wine trail of the Tamar River. Visit the historic Port Arthur penal settlement or experience nature in the World Heritage listed Freycinet and Cradle Mountain – Lake St Claire National Parks. Roam the historic towns to the Heritage Highway or the beautiful Huon Valley.

For further information visit [www.tasmaniaconventions.com](http://www.tasmaniaconventions.com)

## **VICTORIA**

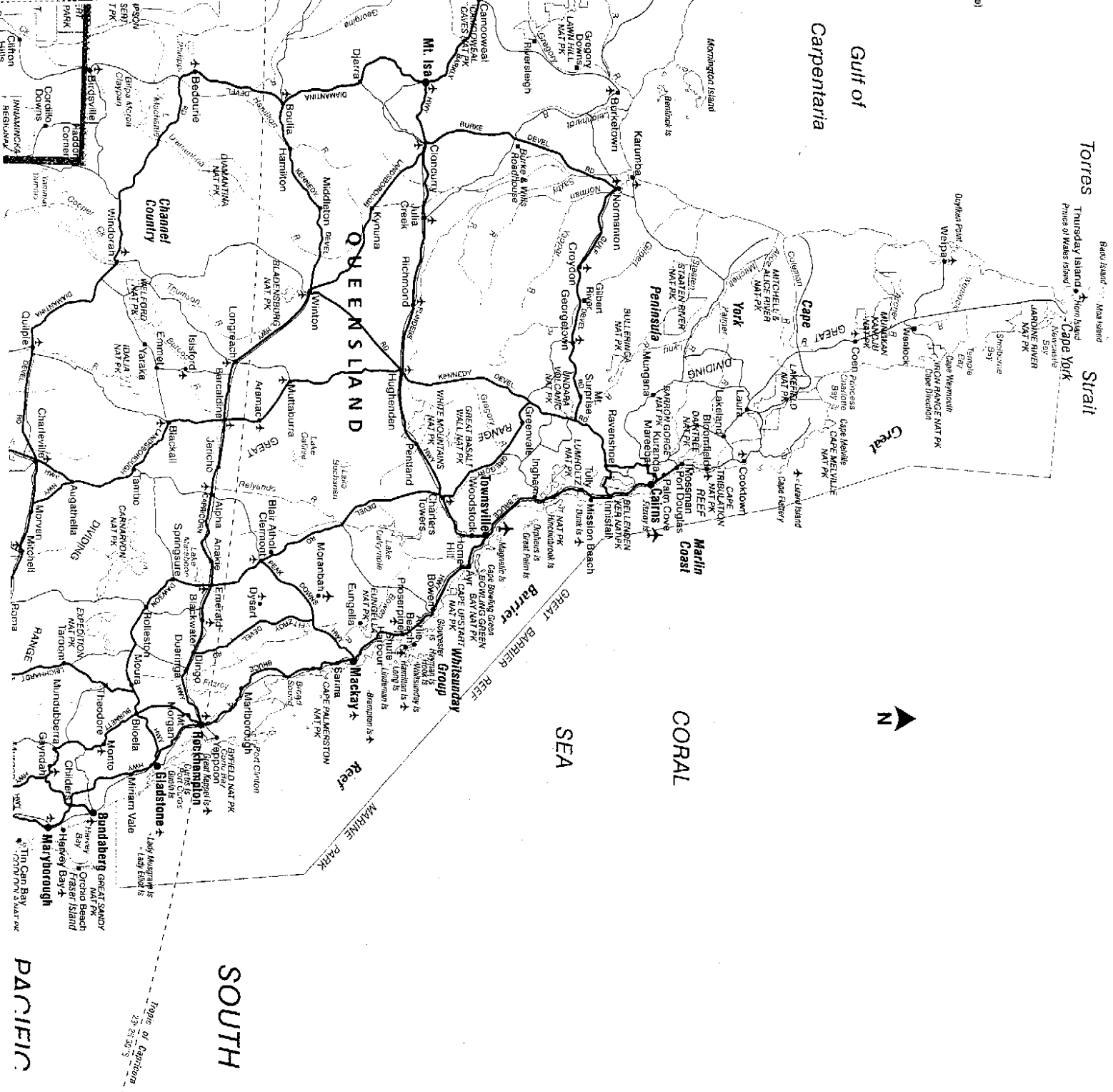
Arts savvy, sports crazy, food-loving Melbourne has it all. The sophistication of the 'most livable city' fused with the excitement of 'Australia's events capital'. Enjoy a year-round calendar of international events including The Australian Grand Prix, The Australian Open Tennis Championships, The Melbourne Cup and the Commonwealth Games in 2006. Indulge in multicultural cuisine at Docklands Waterfront Precinct or at Melbourne's newest icon, Federation Square. Discover the city streets and laneways chequered with boutique fashion, rich café culture and vibrant nightlife. Escape to the fringes of the city and enjoy breathtaking Victoria. Visit the Yarra Valley for superb wine, The Great Ocean Road for the natural wonder of The Twelve Apostles, Mornington Peninsula for the home of The Australian Open at Moonah Links Golf Course or Phillip Island for the Penguin Parade.

For further information visit: [www.mcvb.com.au](http://www.mcvb.com.au)

## **WESTERN AUSTRALIA**

Perth is set on the shores of the Indian Ocean. A vibrant modern city with graceful boulevards, slick skyscrapers, kilometres of beaches and an impossibly blue sky! Be touched by nature in the world heritage region of Shark Bay. Enjoy the wide variety of water sports Australians love so much. Visit the magnificent Margaret River wine region, try your luck in the goldfield towns of Kalgoorlie and Coolgardie or head north to the pearling town of Broome, gateway to the Kimberley, with its tree-lined streets, colonial homes and spectacular coastline.

For further information visit [www.westernaustralia.com](http://www.westernaustralia.com)



**Australia**  
A different light

**WEATHER CHART**

Average temperature (Celsius), Rainfall in mm, sunshine in hours per day.

	SUMMER			AUTUMN			WINTER			SPRING		
	Jan	Feb	Mar	Apr	May	Jun	Jul	Aug	Sep	Oct	Nov	Dec
<b>Adelaide</b>	Max 28	28	25	22	18	16	15	16	18	21	24	26
	Min 16	16	14	12	10	8	7	8	9	11	13	14
Rainfall	18	19	22	36	56	55	63	51	47	40	25	24
Rainy days	5	4	6	9	13	14	16	13	11	8	7	7
Sunshine	10	10	9	7	5	5	5	6	7	8	9	10
<b>Alice Springs</b>	Max 36	35	33	28	23	20	20	22	27	31	34	35
	Min 21	21	18	13	8	5	4	6	10	15	18	20
Rainfall	39	44	34	18	20	15	14	10	9	22	25	36
Rainy days	5	5	3	2	3	3	3	2	2	5	6	6
Sunshine	10	10	10	9	8	8	8	9	10	10	10	10
<b>Brisbane</b>	Max 29	29	28	26	24	21	21	22	24	26	27	29
	Min 21	21	20	17	14	11	10	10	13	16	18	20
Rainfall	158	172	139	90	99	71	63	43	35	94	97	126
Rainy days	13	14	14	11	11	8	7	7	7	10	10	12
Sunshine	9	8	8	7	6	7	7	8	9	9	9	9
<b>Cairns</b>	Max 31	31	31	29	28	26	26	27	28	29	31	31
	Min 24	24	23	22	20	18	17	17	19	21	22	23
Rainfall	395	457	418	200	96	48	29	29	36	41	97	184
Rainy days	18	20	19	18	14	9	9	8	8	8	10	14
Sunshine	7	6	6	6	7	8	7	8	8	9	8	8
<b>Canberra</b>	Max 28	27	24	20	15	12	11	13	16	19	22	26
	Min 13	13	11	7	3	1	0	1	3	6	9	11
Rainfall	62	54	53	50	49	40	42	47	53	66	65	53
Rainy days	8	7	7	7	8	9	10	11	10	11	10	8



Route	Road Distance km / miles	Air	Coach	Rail
Sydney-Adelaide	1,412 / 877	1,40	22	25,30
Sydney-Carberra	286 / 177	45	4,30	4
Sydney-Melbourne	872 / 542	1,10	14,30	10,25
Carberra-Melbourne	648 / 402	1	9,30	8,30
Melbourne-Adelaide	731 / 454	1,05	1,10	1,2
Adelaide-Broken Hill	508 / 315	1,10	7,10	9
Adelaide-Alice Springs	1,533 / 952	2	19	20
Adelaide-Perth	2,706 / 1,680	3,10	34	38
Melbourne-Hobart	630 / 378	1,10	-	-
Adelaide-Brisbane	2,045 / 1,270	2,45	33	40
Darwin-Alice Springs	1,489 / 924	1,55	19	-
Darwin-Kakadu	200 / 124	-	3,30	-
Alice Springs-Uluru	443 / 275	40	6	-
Cairns-Brisbane	1,716 / 1,065	2,05	28	30
Brisbane-Sydney (inland)	990 / 614	1,20	17	-
Brisbane-Sydney (coastal)	965 / 600	-	15	14,30
Melbourne-Devoport	1,574 / 1,039	2,10	25	25*
Melbourne-Devoport	307 / 190	14**	-	-

### JOURNEY TIMES IN HOURS

Route	Road Distance km / miles	Air	Coach	Rail
Sydney-Adelaide	1,412 / 877	1,40	22	25,30
Sydney-Carberra	286 / 177	45	4,30	4
Sydney-Melbourne	872 / 542	1,10	14,30	10,25
Carberra-Melbourne	648 / 402	1	9,30	8,30
Melbourne-Adelaide	731 / 454	1,05	1,10	1,2
Adelaide-Broken Hill	508 / 315	1,10	7,10	9
Adelaide-Alice Springs	1,533 / 952	2	19	20
Adelaide-Perth	2,706 / 1,680	3,10	34	38
Melbourne-Hobart	630 / 378	1,10	-	-
Adelaide-Brisbane	2,045 / 1,270	2,45	33	40
Darwin-Alice Springs	1,489 / 924	1,55	19	-
Darwin-Kakadu	200 / 124	-	3,30	-
Alice Springs-Uluru	443 / 275	40	6	-
Cairns-Brisbane	1,716 / 1,065	2,05	28	30
Brisbane-Sydney (inland)	990 / 614	1,20	17	-
Brisbane-Sydney (coastal)	965 / 600	-	15	14,30
Melbourne-Devoport	1,574 / 1,039	2,10	25	25*
Melbourne-Devoport	307 / 190	14**	-	-

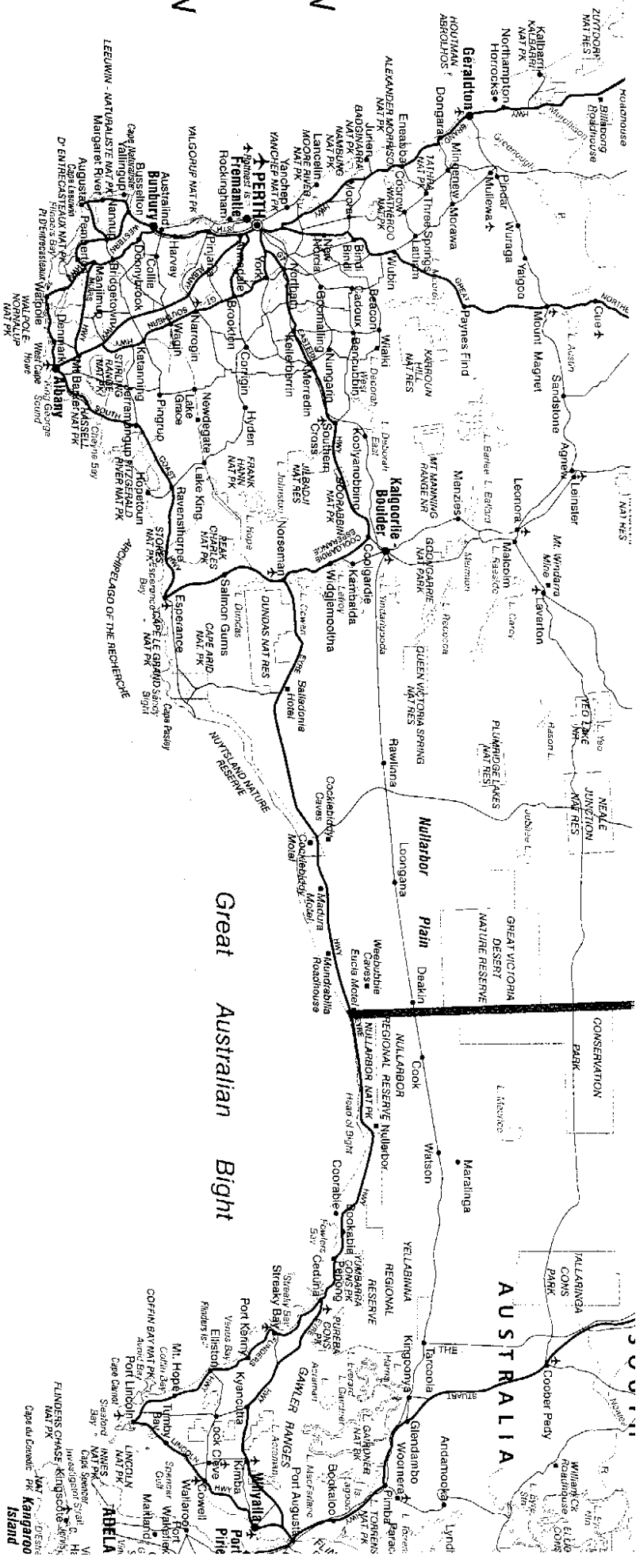
### Celsius to Fahrenheit

C	0	5	10	15	20	25	30	35	40	45	50	55	60
F	32	41	50	59	68	77	86	95	104	113	122	131	140

Rainy day = min. 0.2mm. 25mm is approximately one inch.

City	1	2	3	4	5	6	7	8	9	10	11	12	13	14	15	16	17	18	19	20	21	22	23	24	
<b>Sydney</b>	26	26	25	23	20	17	17	18	18	20	22	24	26	26	26	25	23	20	17	17	18	18	20	22	24
<b>Perth</b>	32	32	30	25	22	19	18	18	18	20	22	24	26	26	26	25	23	20	17	17	18	18	20	22	24
<b>Hobart</b>	22	22	21	18	15	13	12	13	13	15	17	19	21	21	21	20	18	15	13	12	13	13	15	17	19
<b>Melbourne</b>	26	27	24	20	17	13	13	14	14	16	19	22	24	24	24	23	21	18	15	13	14	14	16	19	22
<b>Brisbane</b>	14	14	13	10	8	6	5	6	6	7	9	10	12	12	12	11	9	7	5	4	5	6	7	9	11
<b>Sydney (Rainfall)</b>	46	41	39	47	46	41	37	47	51	59	60	49	49	49	47	44	41	37	34	34	34	34	34	34	34
<b>Perth (Rainfall)</b>	9	15	15	41	104	171	162	120	71	47	25	11	11	11	11	11	11	11	11	11	11	11	11	11	11
<b>Hobart (Rainfall)</b>	3	3	4	8	13	17	18	16	13	10	7	4	4	4	4	4	4	4	4	4	4	4	4	4	4
<b>Melbourne (Rainfall)</b>	12	11	10	8	7	6	6	6	7	8	10	10	12	12	12	12	12	12	12	12	12	12	12	12	12

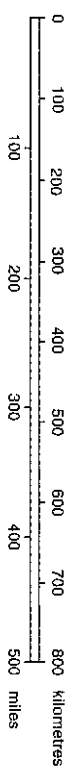
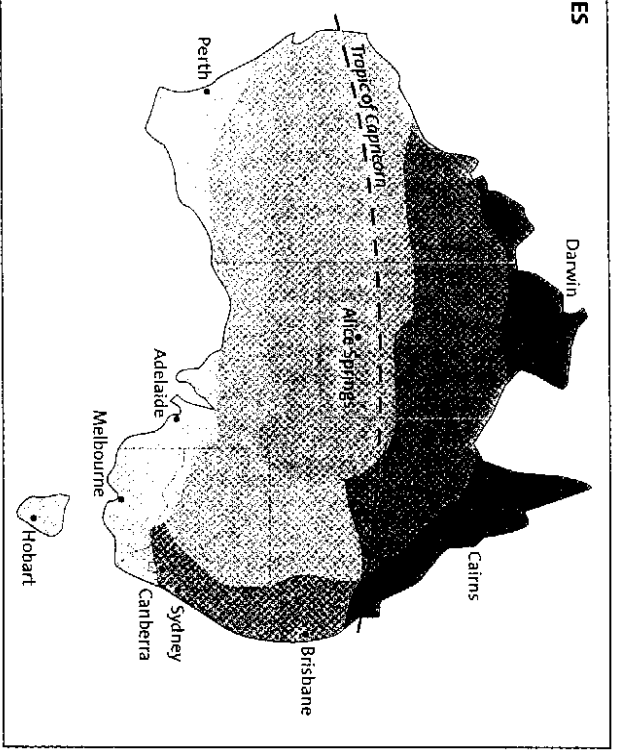
Map produced by Cartograph Australia Pty Ltd for and on behalf of Tourism Australia



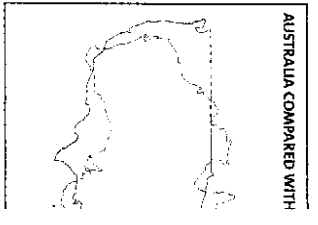
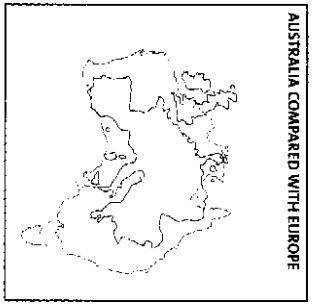
INDIAN OCEAN

AUSTRALIA'S CLIMATIC ZONES

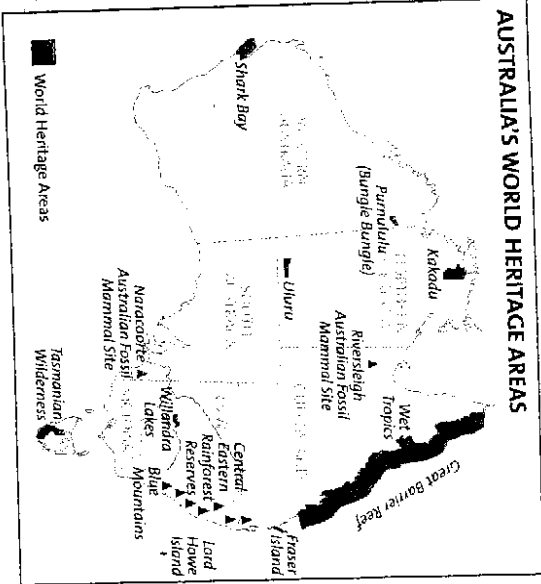
- Wet and dry tropical
- Semi-arid tropical
- Hot arid
- Semi-arid mid-latitude
- Dry subtropical
- Humid subtropical
- Temperate marine



SOUTHERN OCEAN







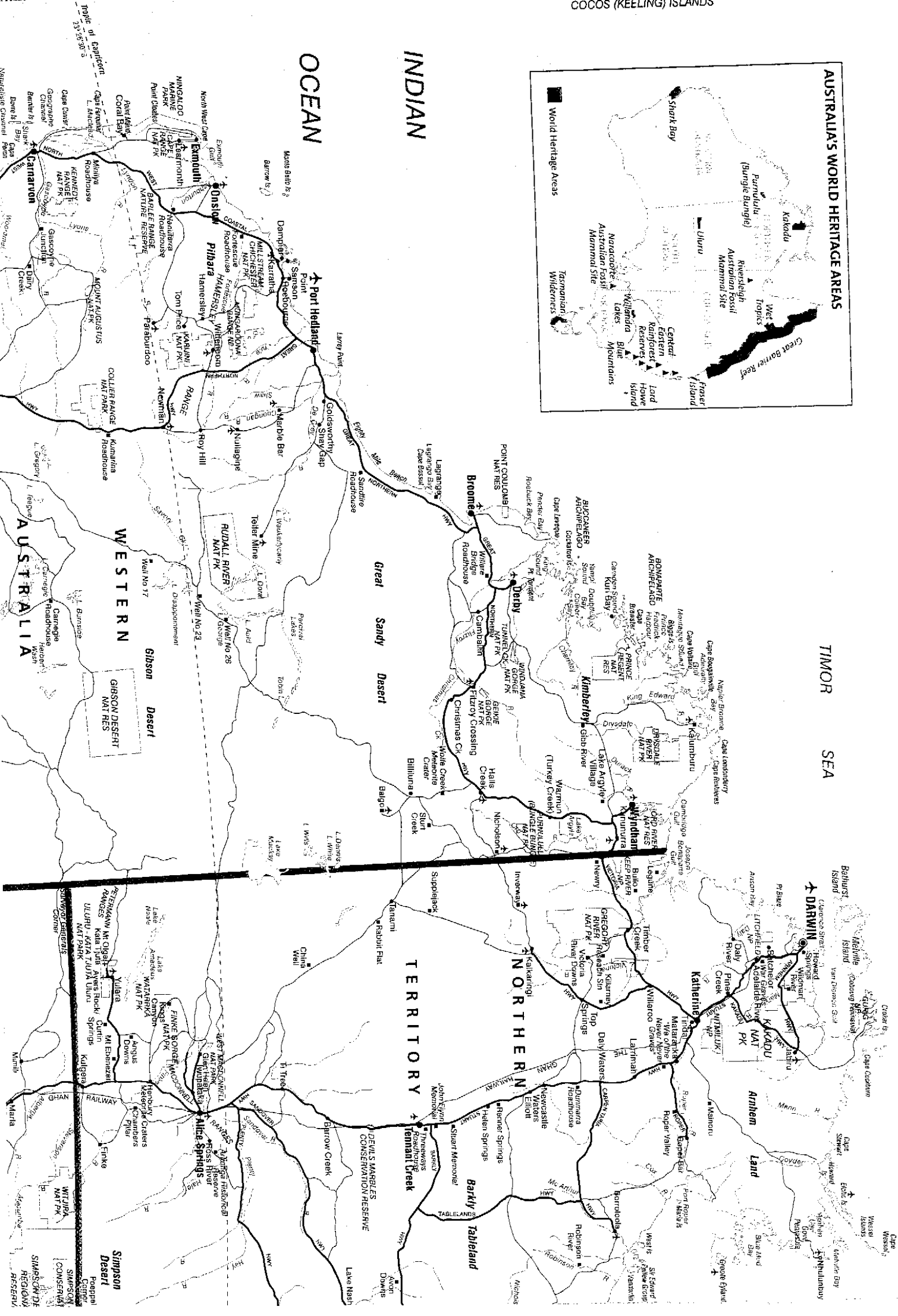
AUSTRALIA'S WORLD HERITAGE AREAS

TIMOR SEA

ARAFURA SEA

INDIAN OCEAN

OCEAN



WESTERN AUSTRALIA

NORTHERN TERRITORY

TERRITORY

Great Sandy Desert

Gibson Desert

Simpson Desert

AUSTRALIA

Map of Capricorn 33° 35' 38" S

# Traveller's tips

## TRAVEL DOCUMENTATION

You will need a current passport and visa or ETA (Electronic Travel Authority) unless you are from New Zealand in which case you will only need a passport. An ETA replaces a visa and is fully electronic. There is no application form, no passport stamp required and no need to send your passport to the relevant authority and can be organised over the phone. A tourist ETA, like a visa, allows a stay for up to three months and is valid for multiple travel for one year. An ETA is free of charge. For more information on the ETA, go to [www.immi.gov.au/www/eta.htm](http://www.immi.gov.au/www/eta.htm) or [www.eta.immi.gov.au/](http://www.eta.immi.gov.au/)

## CURRENCY

The unit of currency in Australia is the Australian dollar. Australian retailers do not normally accept foreign currency as a method of payment. Australian notes come in \$100, \$50, \$20, \$10 and \$5 values. The gold coins are \$2 and \$1 and 50, 20, 10 and 5 cent coins are silver; there are no coins under 5 cents, everything is rounded to the nearest five cents.

Australian currency fluctuates on the international monetary exchange. Therefore we recommend checking with your local bank for the exchange rate of the currency you intend using during your trip. Most worldwide currencies may be exchanged at the airport or through your hotel. Bank charges and exchange rates vary.

## CREDIT CARDS, TRAVELLERS CHEQUES AND BANKS

All major credit cards are accepted in Australia, the most common being Visa, American Express, MasterCard, Diners Club and Bankcard.

Banks in Australia are open from Monday to Thursday 9.00am to 4.00pm, and Fridays until 5.00pm. There are also Automatic Teller Machines (ATM's) throughout the country that take all major credit cards and many are linked to international networks.

Travellers cheques can be useful when visiting Australia. We suggest you buy these in Australian dollars as they can often be used as cash and don't incur exchange fees. Identification such as a passport is usually required when exchanging travellers cheques.

## GOODS AND SERVICES TAX

Australia has a goods and services tax (GST) of 10 per cent. However, international flights and domestic flights purchased overseas by non-residents are GST free. Continuous domestic legs of international journeys are also GST free. Under the Tourist Refund Scheme (TRS), tourists can claim a refund at the departure gate for GST and WET (wine equalisation tax) paid on goods purchased in Australia that they take with them.

## LANGUAGE

English is the official language in Australia, although many Australians speak more than one language.

## VACCINATIONS

Vaccinations are not required unless you have come from or visited a yellow fever infected country or zone within six days prior to arrival. You do not need any other health certificate to enter Australia.

## TIME ZONES

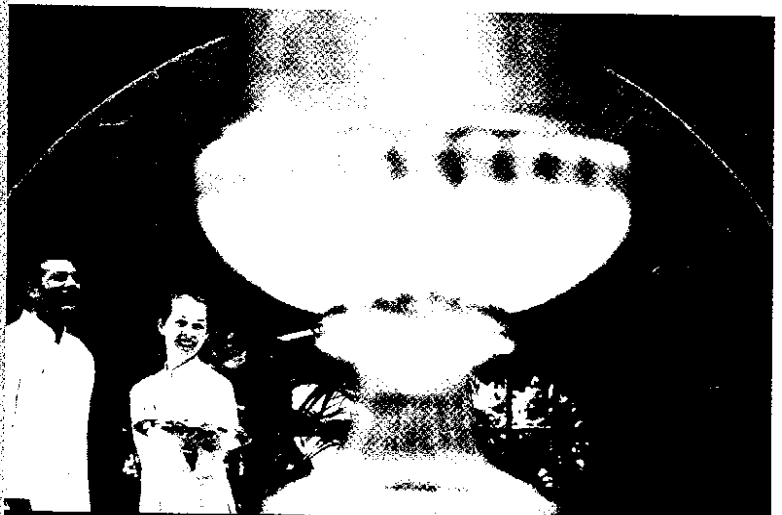
There are three time zones in Australia – Eastern Standard Time, Central Standard Time and Western Standard Time. Additional time zone information can be found at [www.timeanddate.com/worldclock](http://www.timeanddate.com/worldclock)

For more information on Australia visit [www.australia.com](http://www.australia.com)



Tourism Australia

Some people visit Sydney for its icons.  
Others stay in them.



[www.sydney.intercontinental.com](http://www.sydney.intercontinental.com)



INTERCONTINENTAL  
SYDNEY