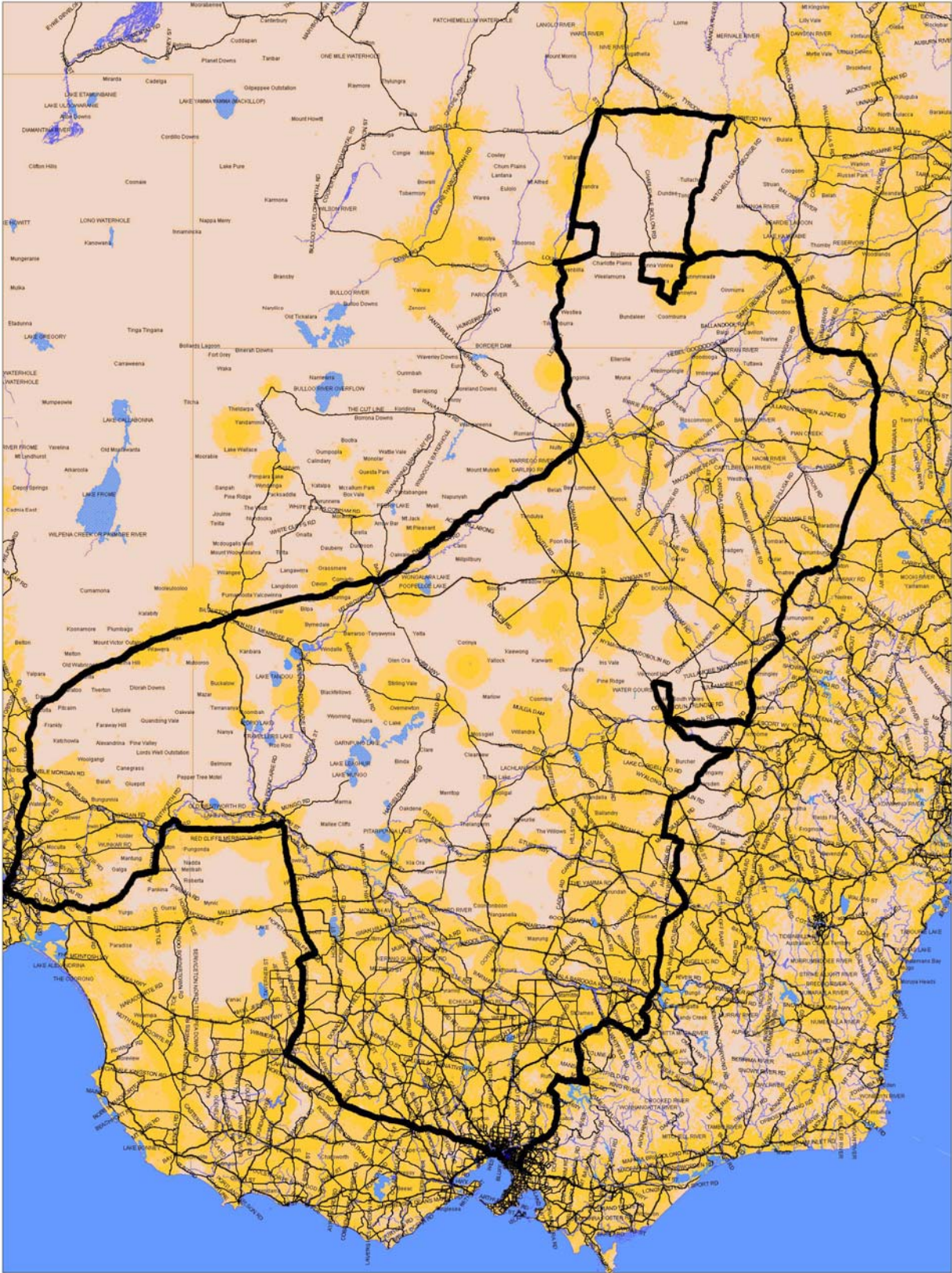


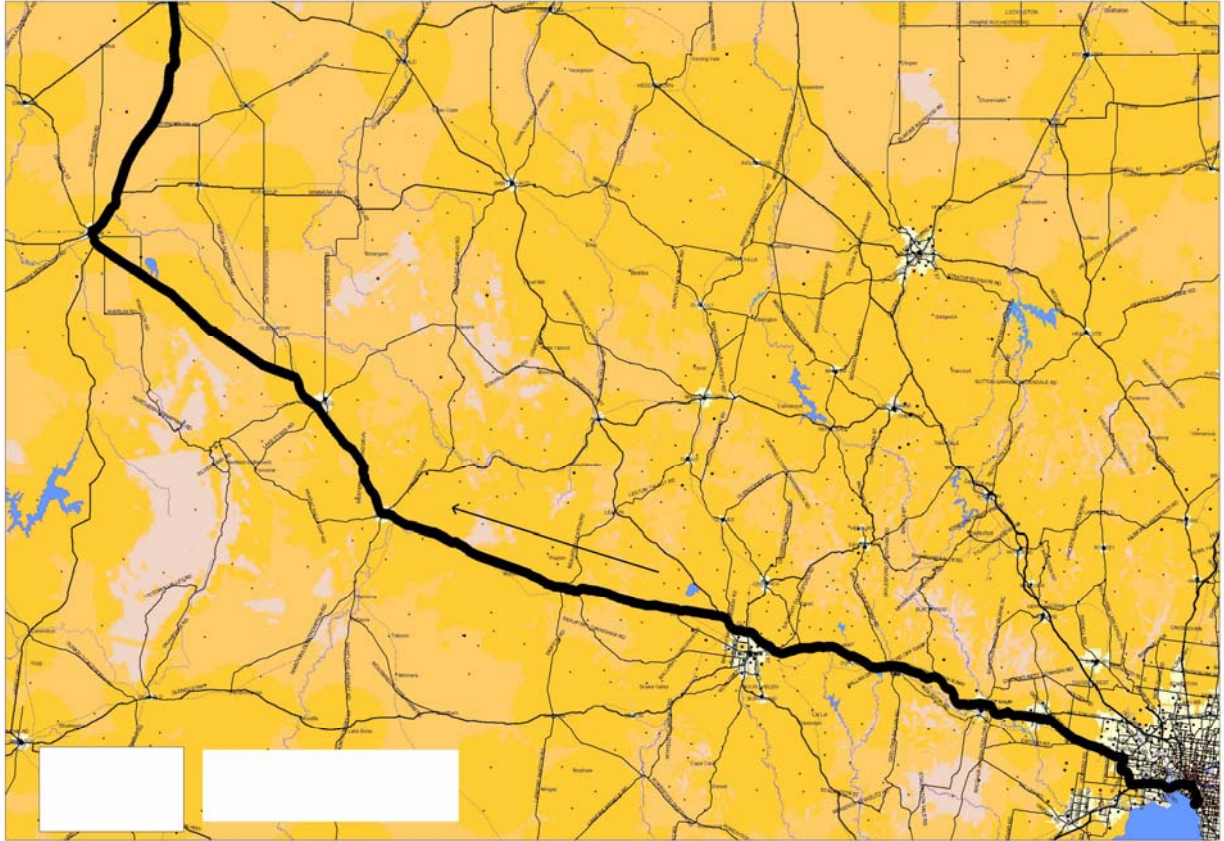
Next G™ Drive Survey Route

The following maps detail the route taken in the drive surveys conducted under contract by Zamro International Pty Limited (Zamro). The maps show the route taken overlaid on published CDMA coverage maps.

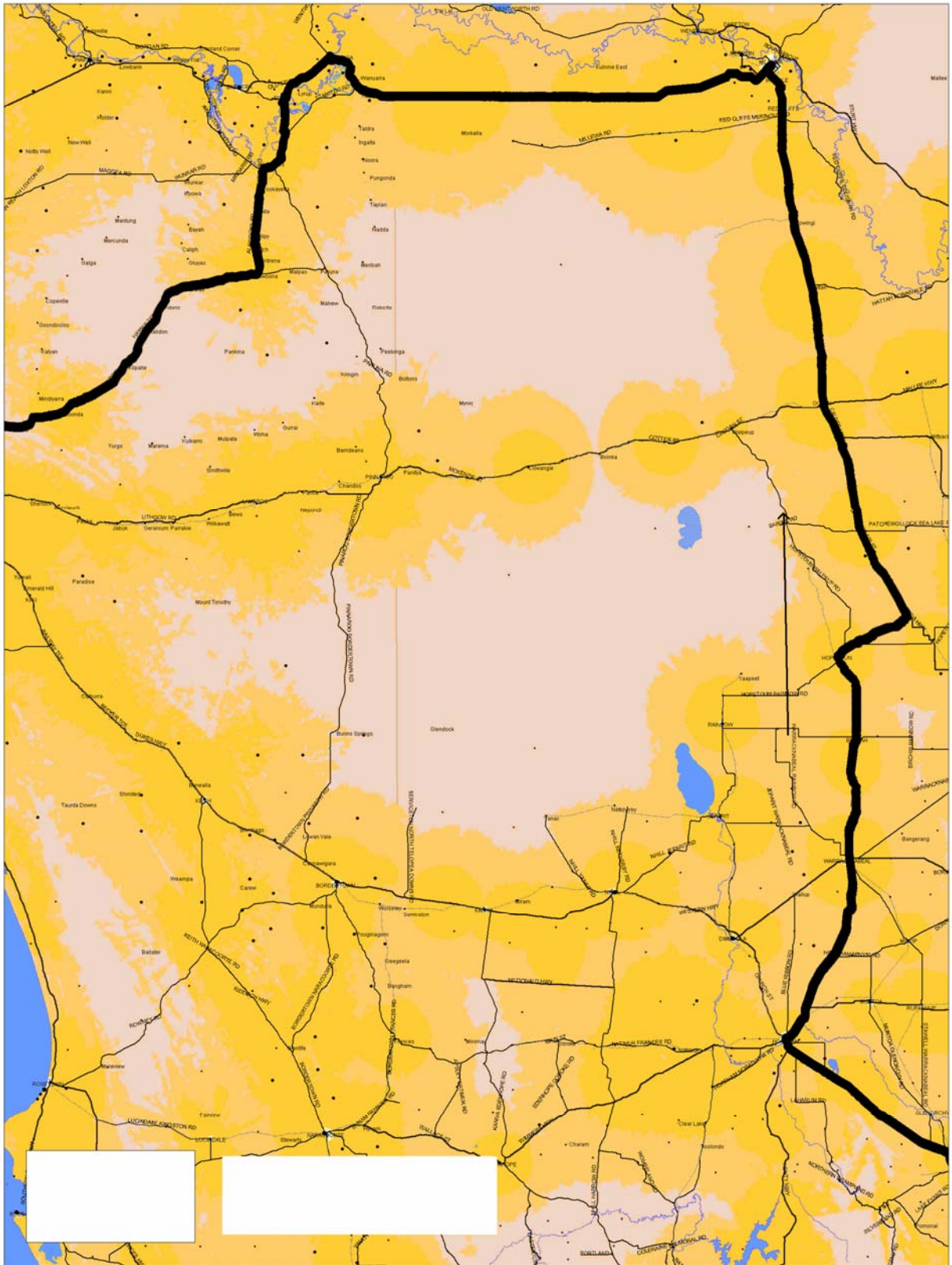
South-Eastern Australia Route



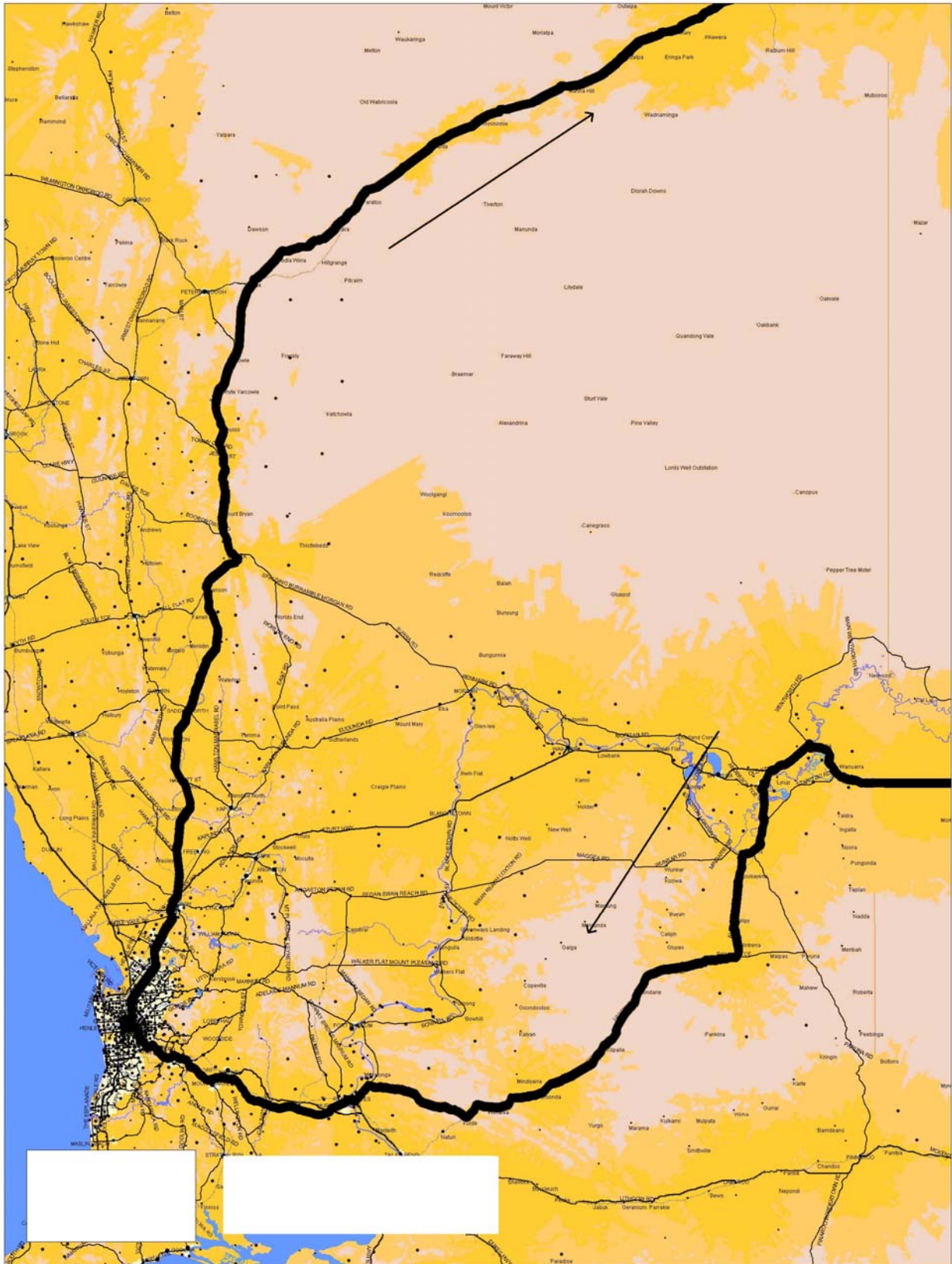
Map 1: Telstra CDMA vs NEXTG Coverage - Melbourne to Horsham (Oct 2007)



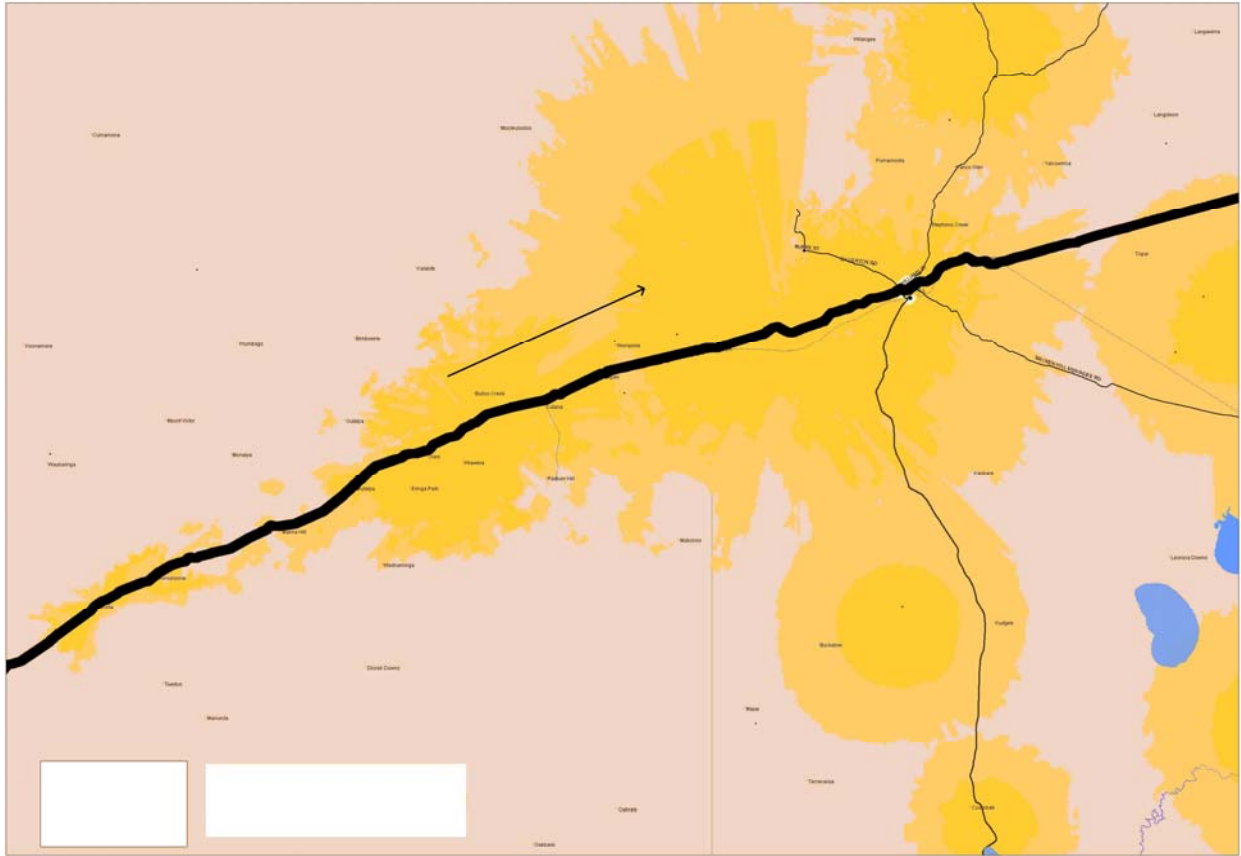
Map 2: Telstra CDMA vs NEXTG Coverage - Horsham to Loxton (Oct 2007)



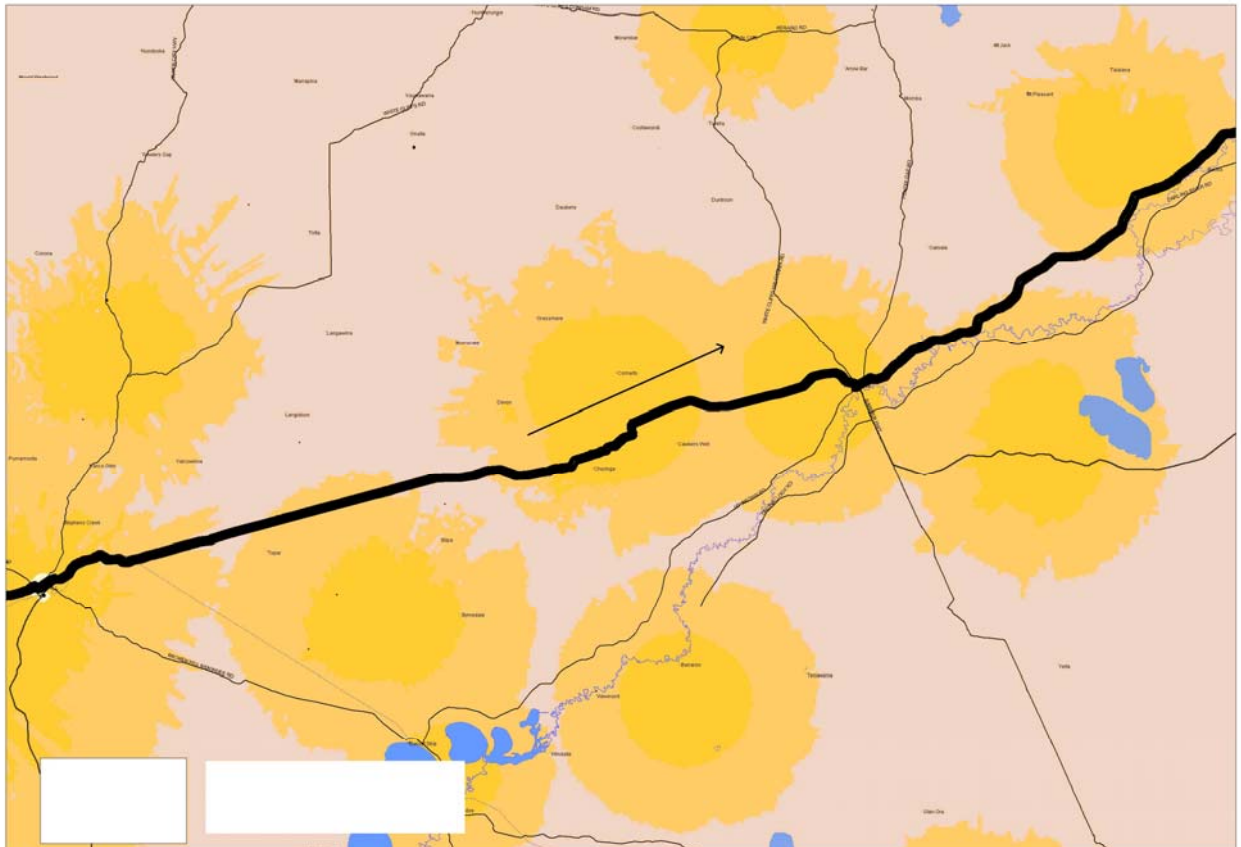
Map 3: Telstra CDMA vs NEXTG Coverage - Loxton to Yunta (Oct 2007)



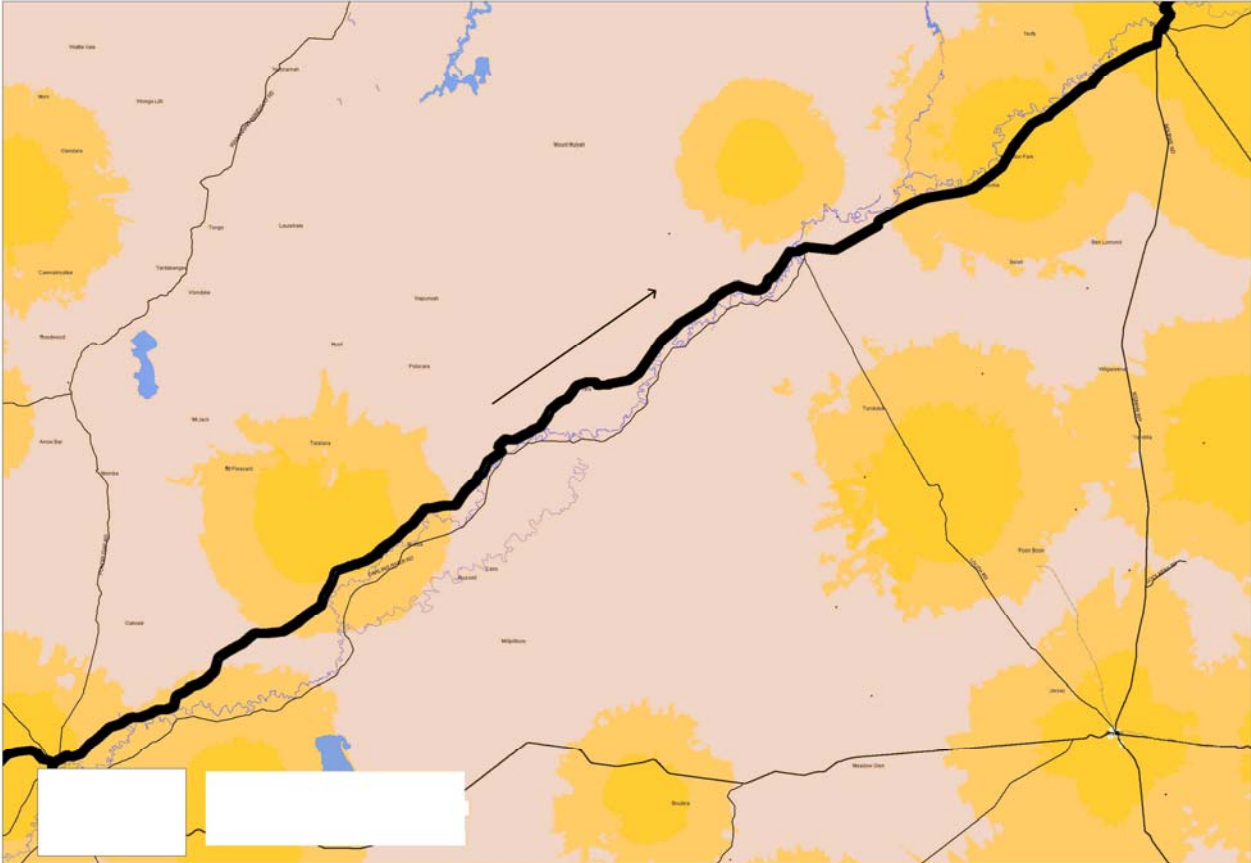
Map 4: Telstra CDMA vs NEXTG Coverage - Yunta to Broken Hill (Oct 2007)



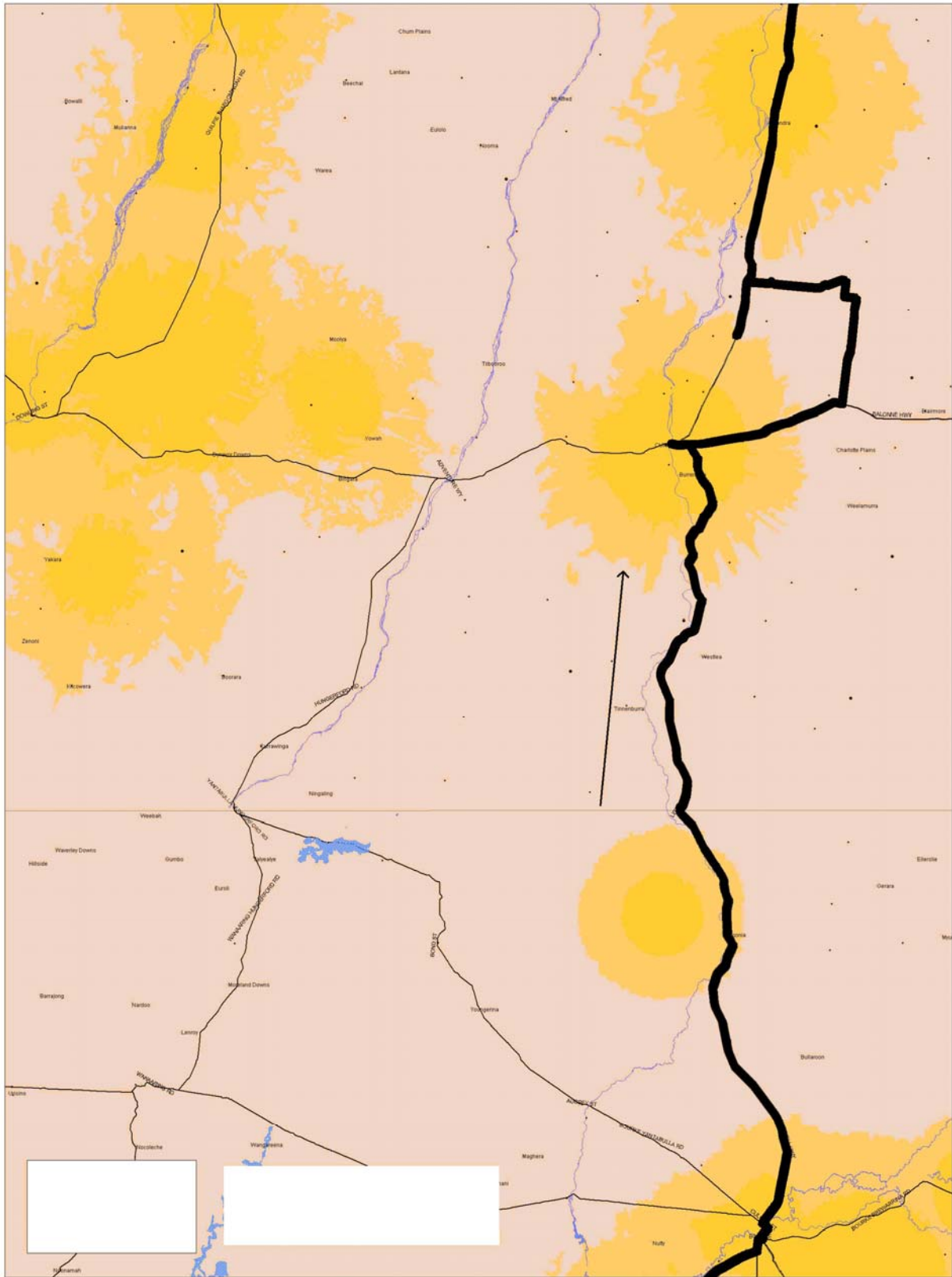
Map 5: Telstra CDMA vs NEXTG Coverage - Broken Hill to Wilcannia (Oct 2007)



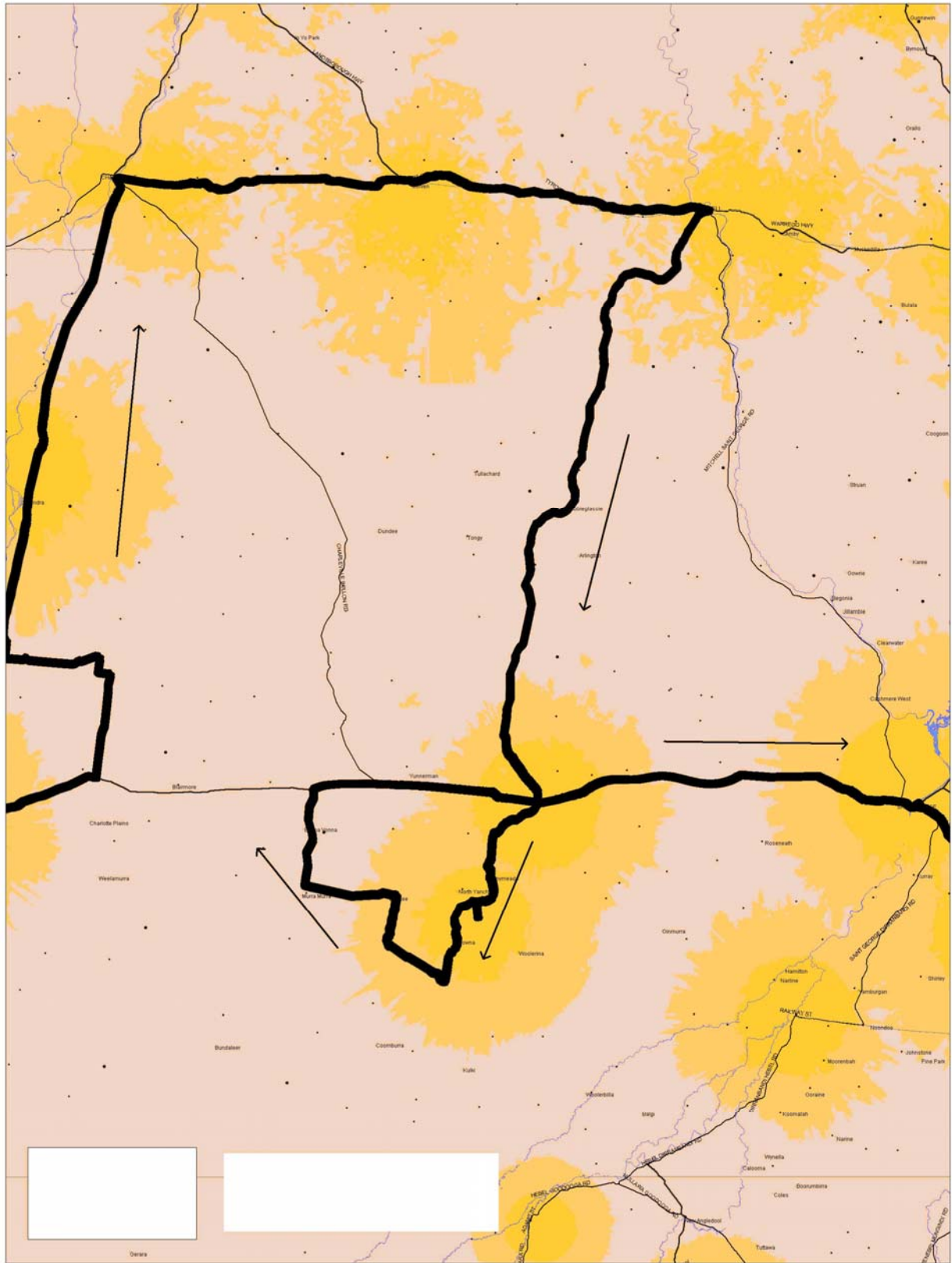
Map 6: Telstra CDMA vs NEXTG Coverage - Wilcannia to Bourke (Oct 2007)



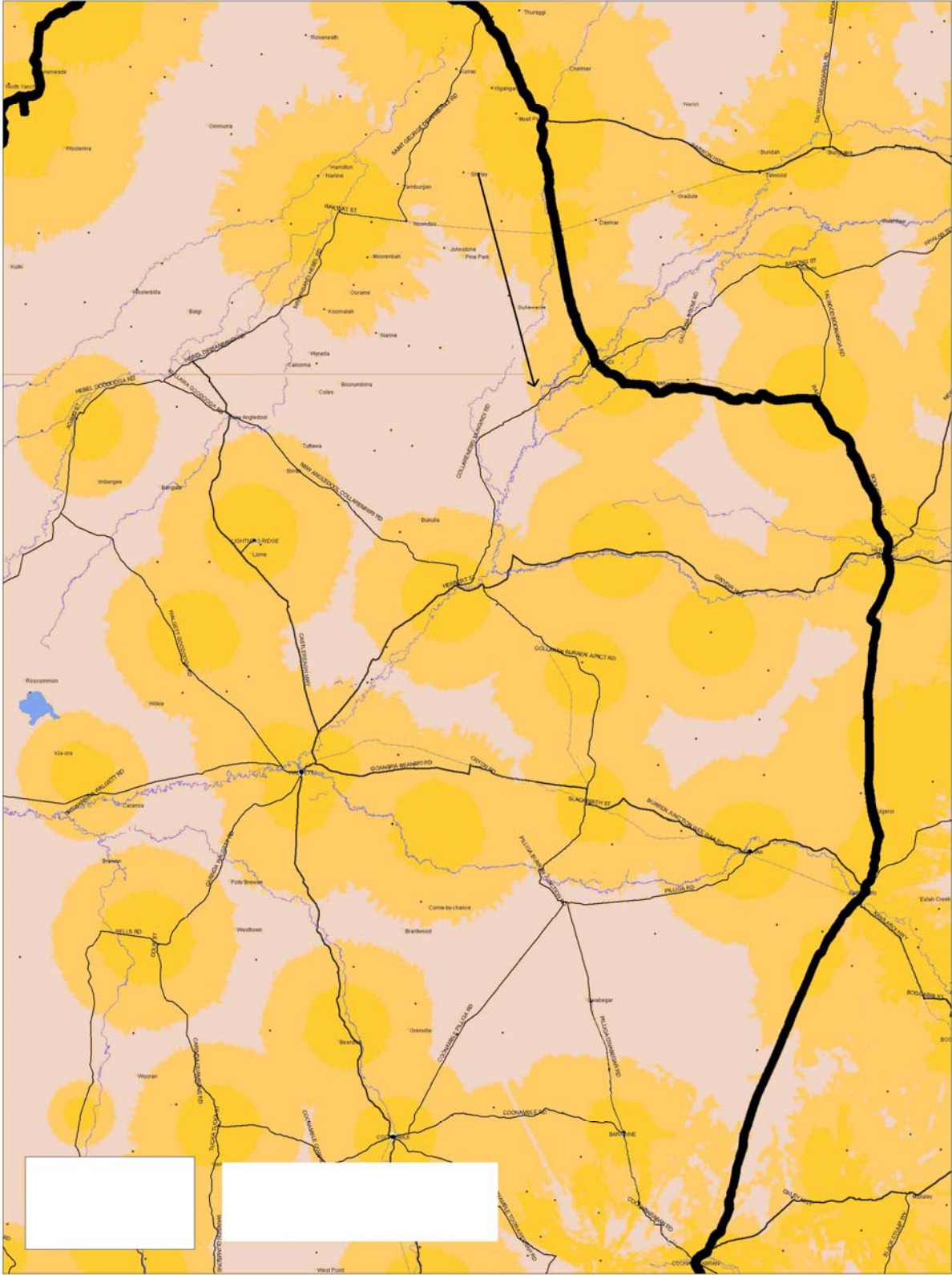
Map 7: Telstra CDMA vs NEXTG Coverage - Bourke to Wyandra (Oct 2007)



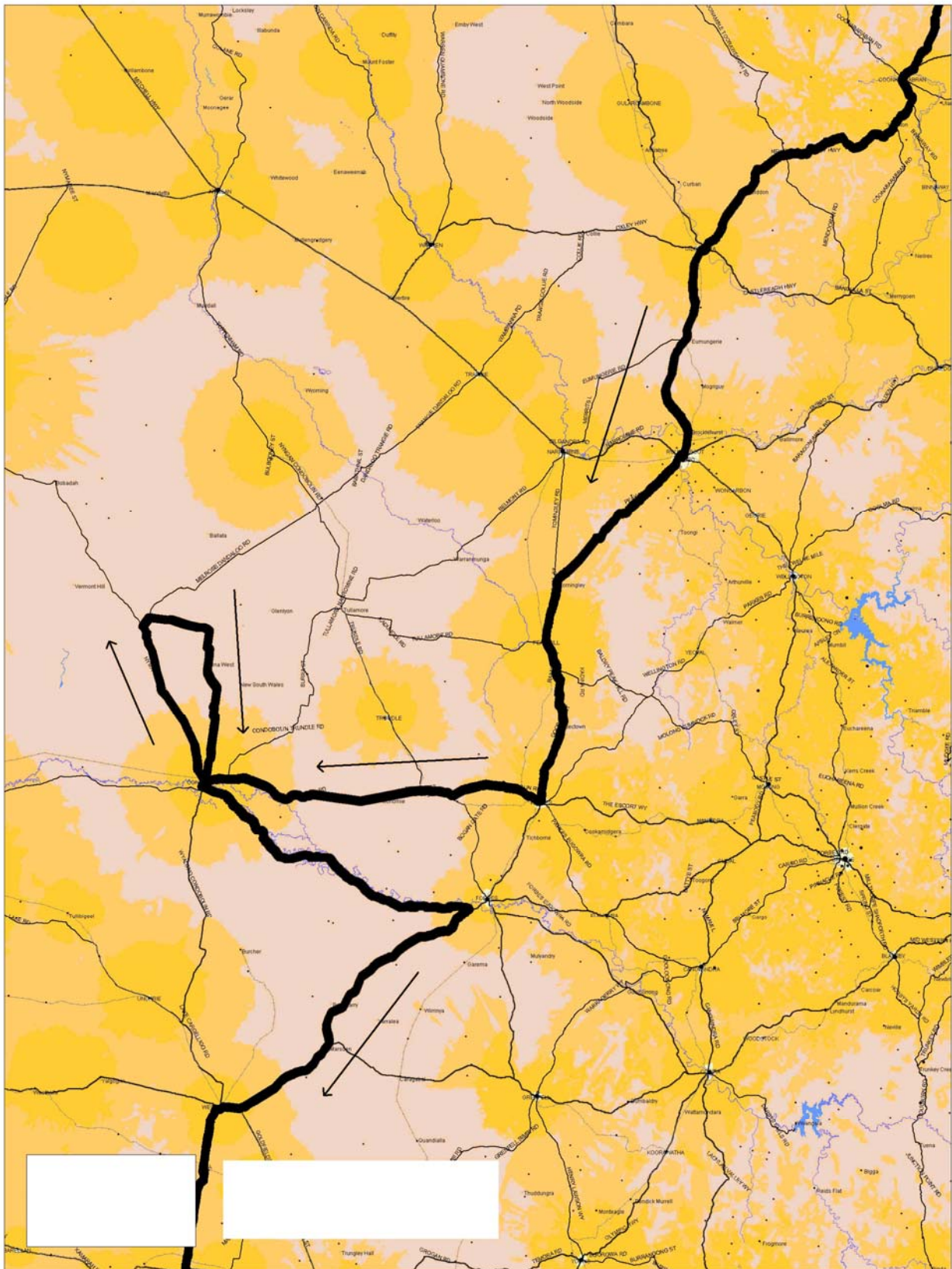
Map 8: Telstra CDMA vs NEXTG Coverage - Wyandra to St George (Oct 2007)



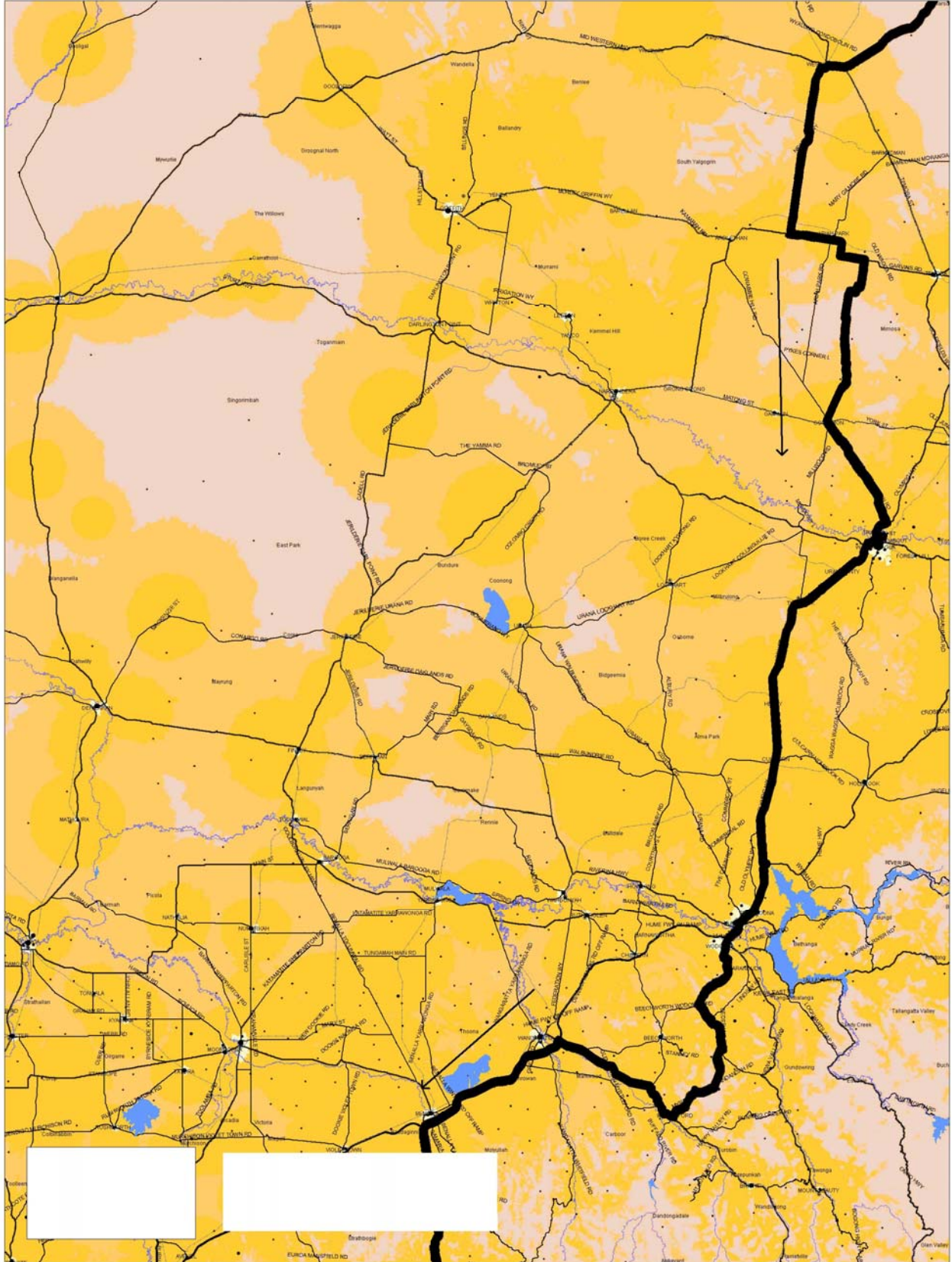
Map 9: Telstra CDMA vs NEXTG Coverage - St George to Coonabarabran (Oct 2007)



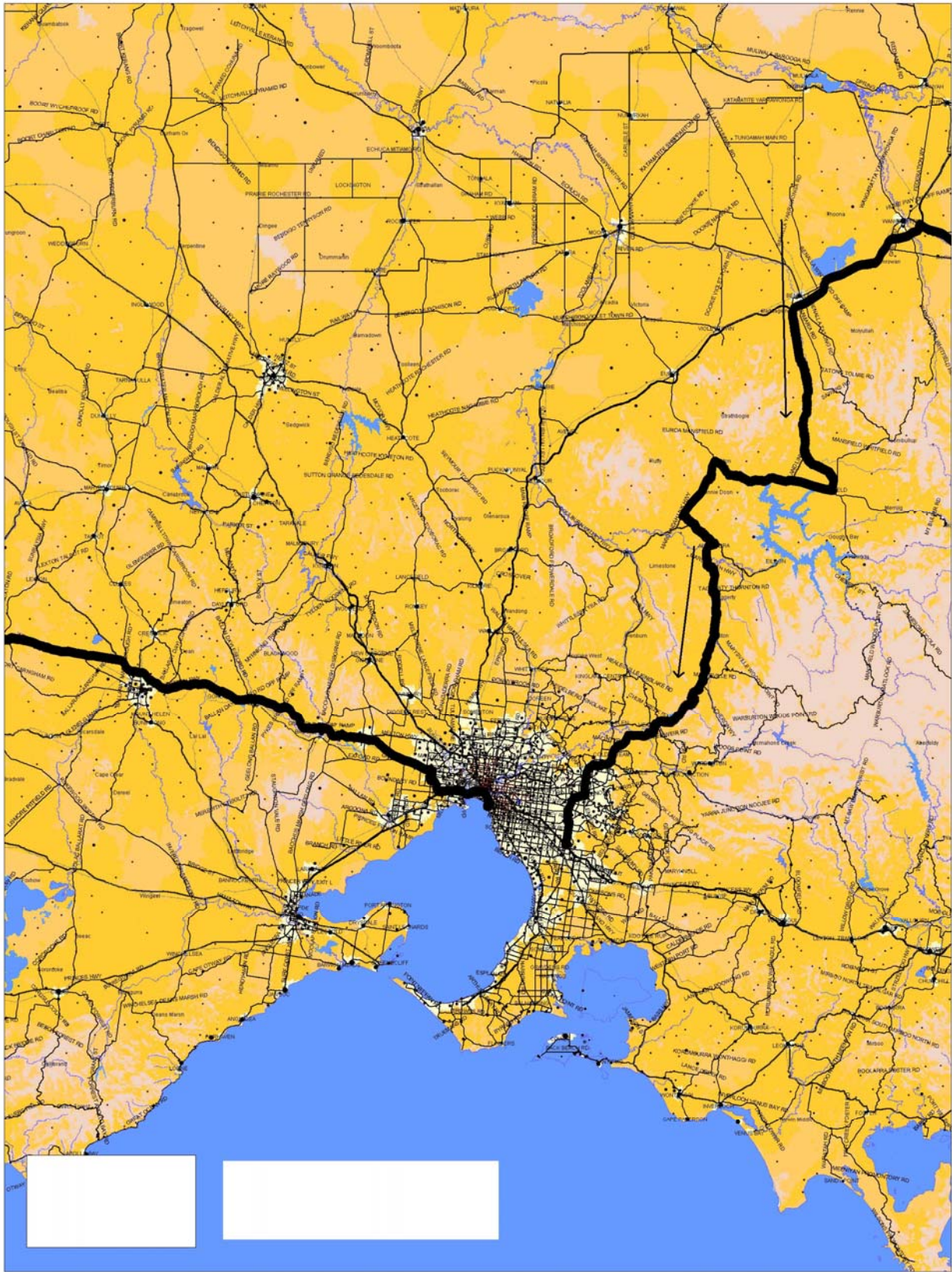
Map 10: Telstra CDMA vs NEXTG Coverage - Coonabarabran to West Wyalong (Oct 2007)



Map 11: Telstra CDMA vs NEXTG Coverage - West Wyalong to Benalla (Oct 2007)

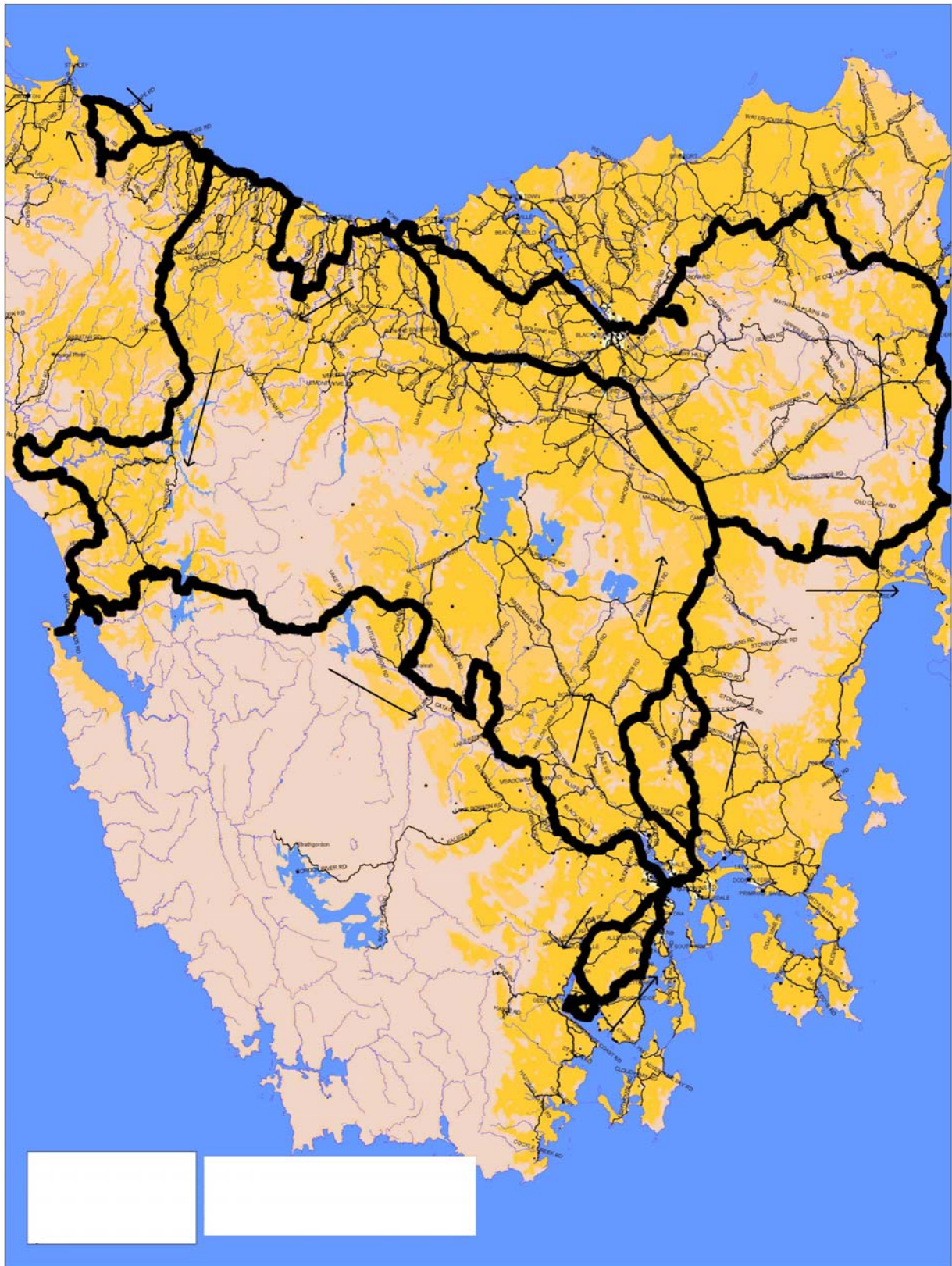


Map 12: Telstra CDMA vs NEXTG Coverage - Benalla to Melbourne (Oct 2007)

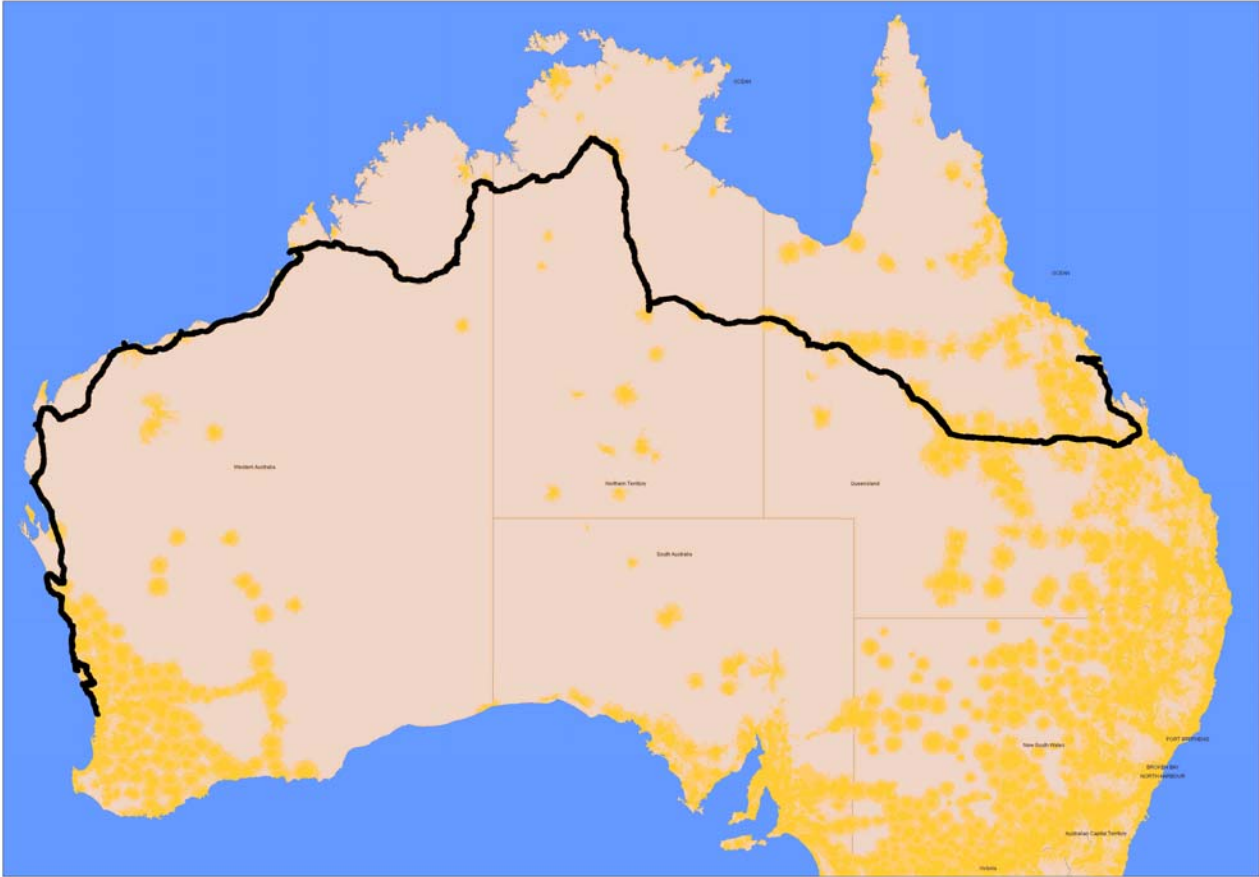


Tasmania Route

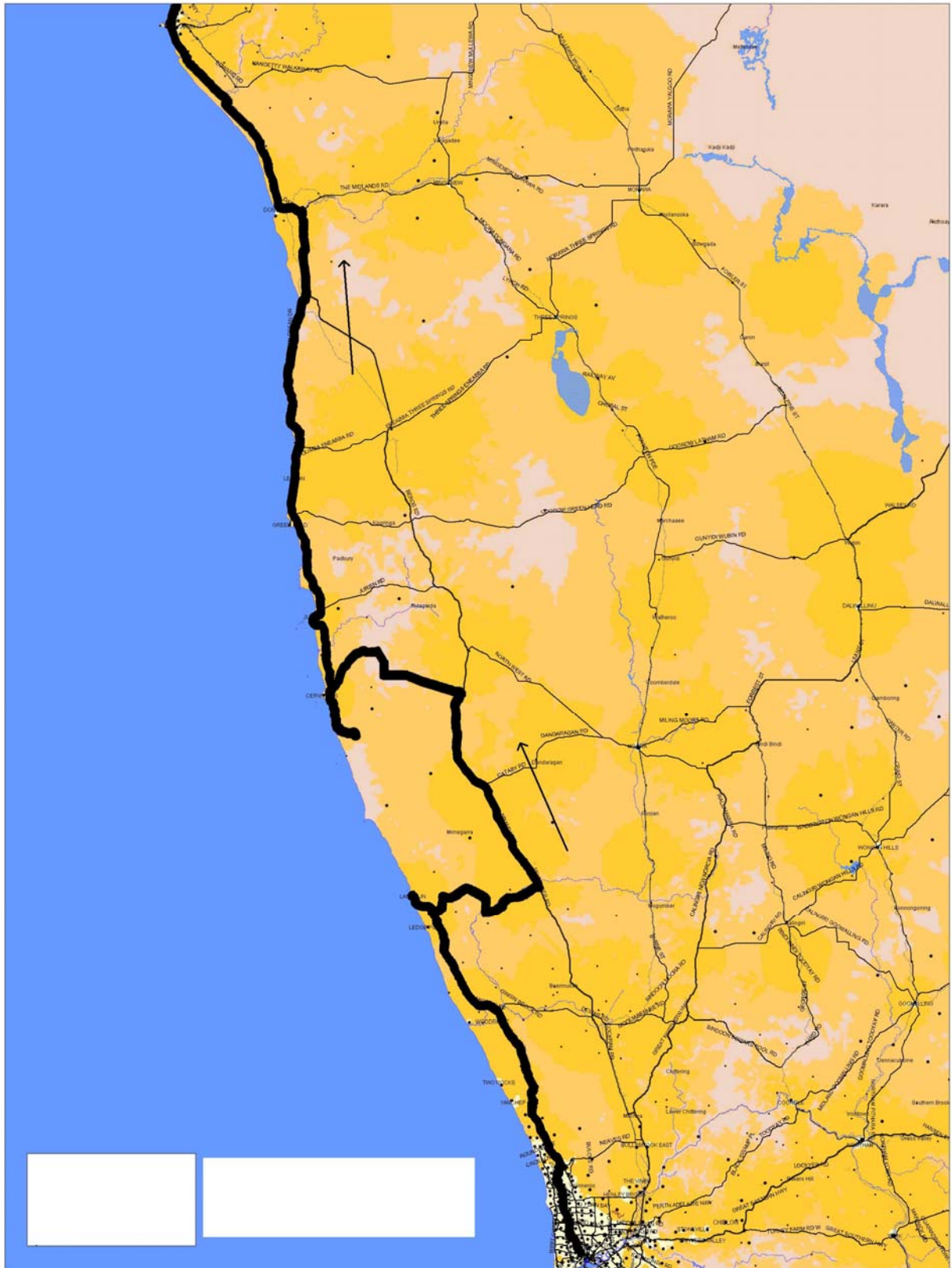
Map 14: Telstra CDMA vs NEXTG Coverage - Tasmania (Nov 2007)



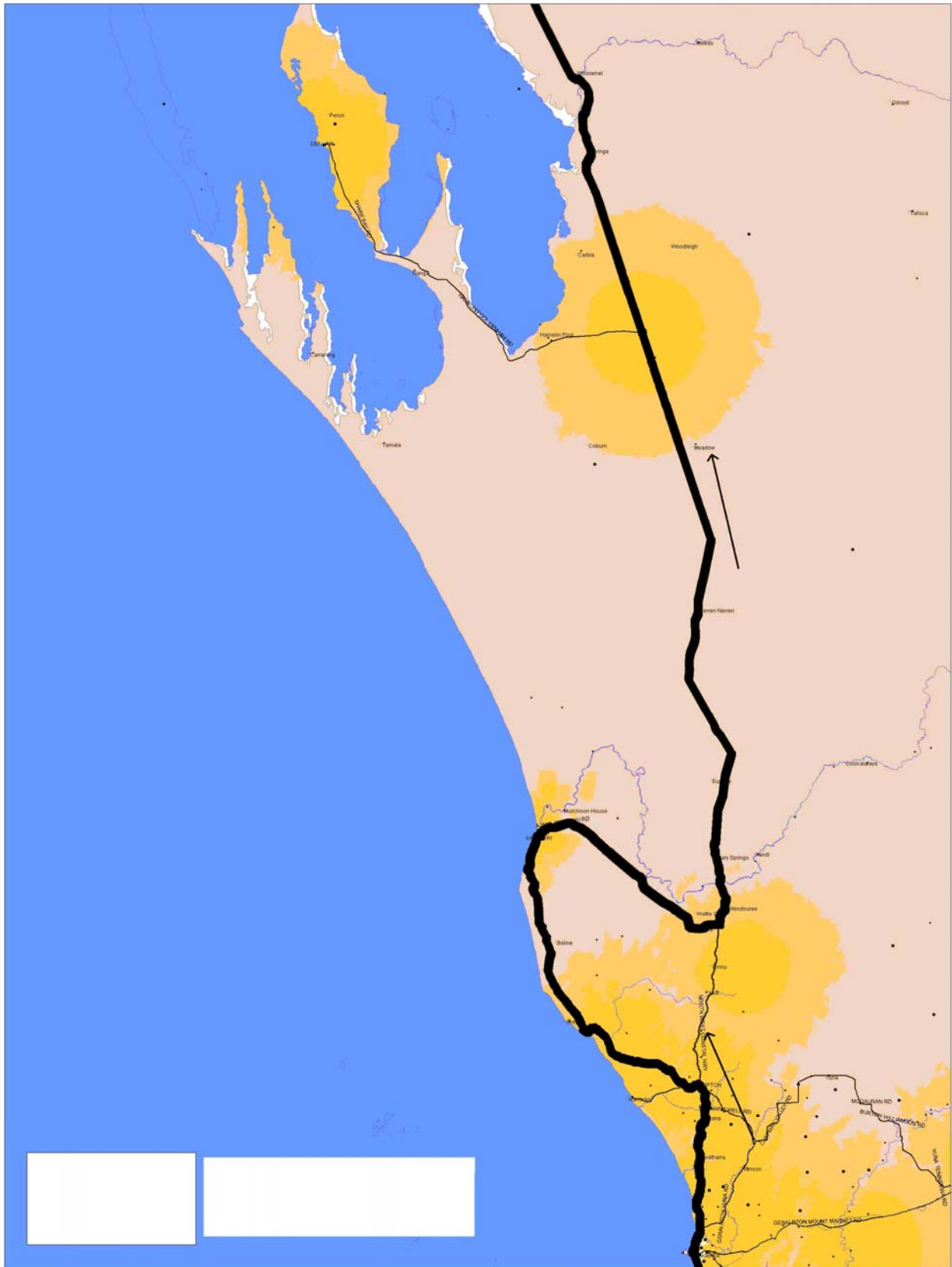
Top End Route



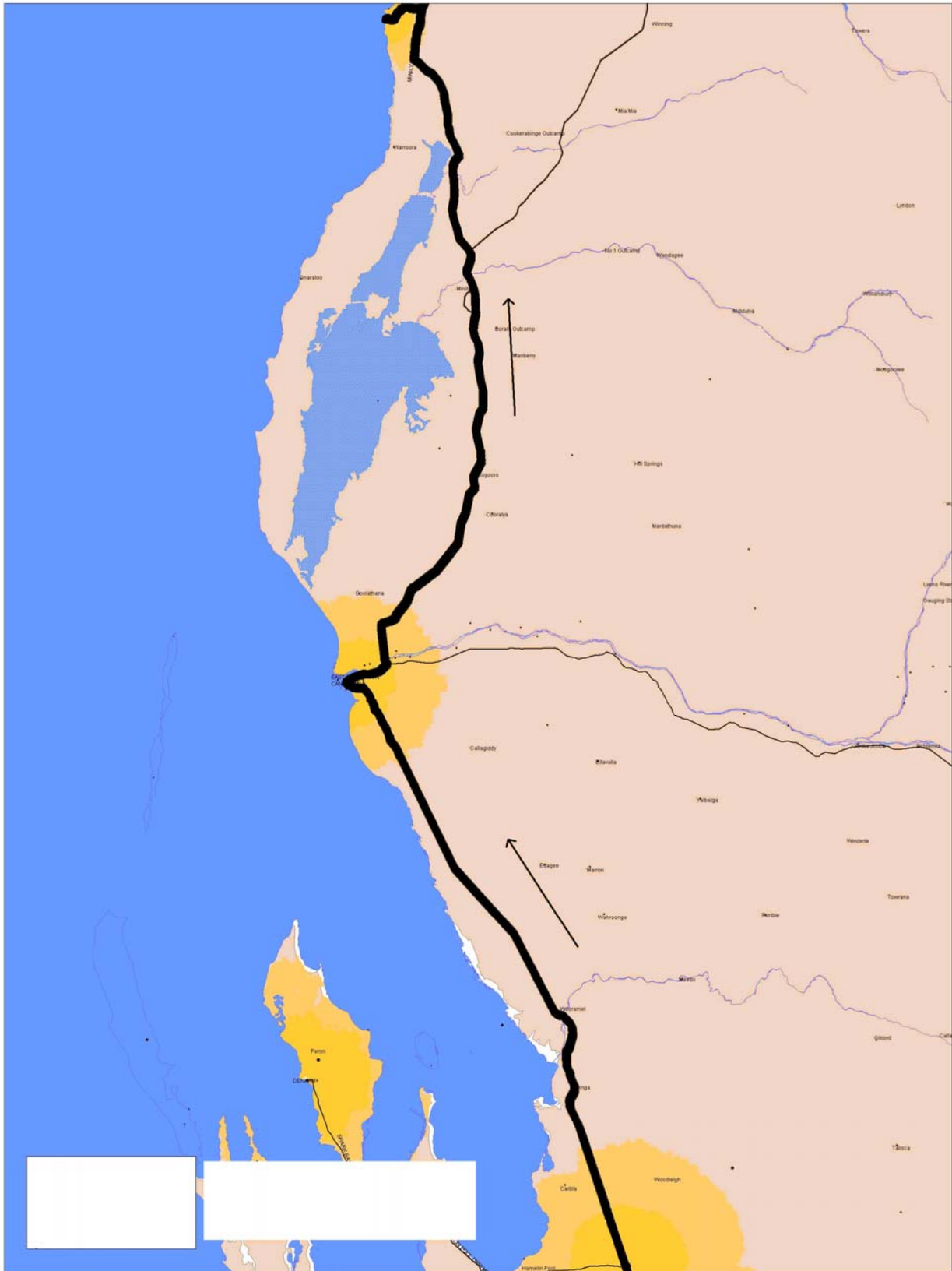
Map 15: Telstra CDMA vs NEXTG Coverage - Perth to Geraldton (Nov 2007)



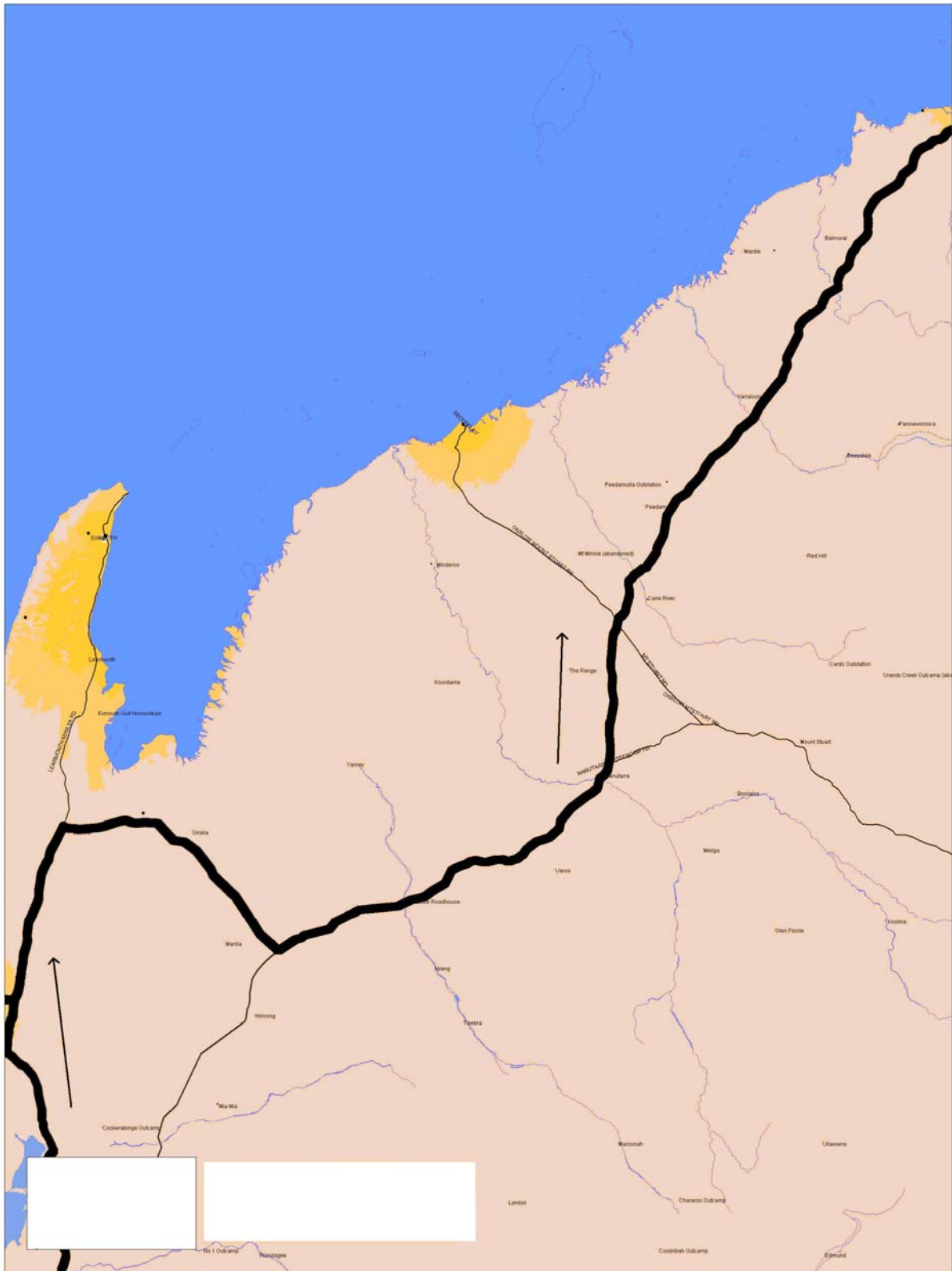
Map 16: Telstra CDMA vs NEXTG Coverage - Geraldton to Shark Bay (Nov 2007)



Map 17: Telstra CDMA vs NEXTG Coverage - Shark Bay to Coral Bay (Nov 2007)



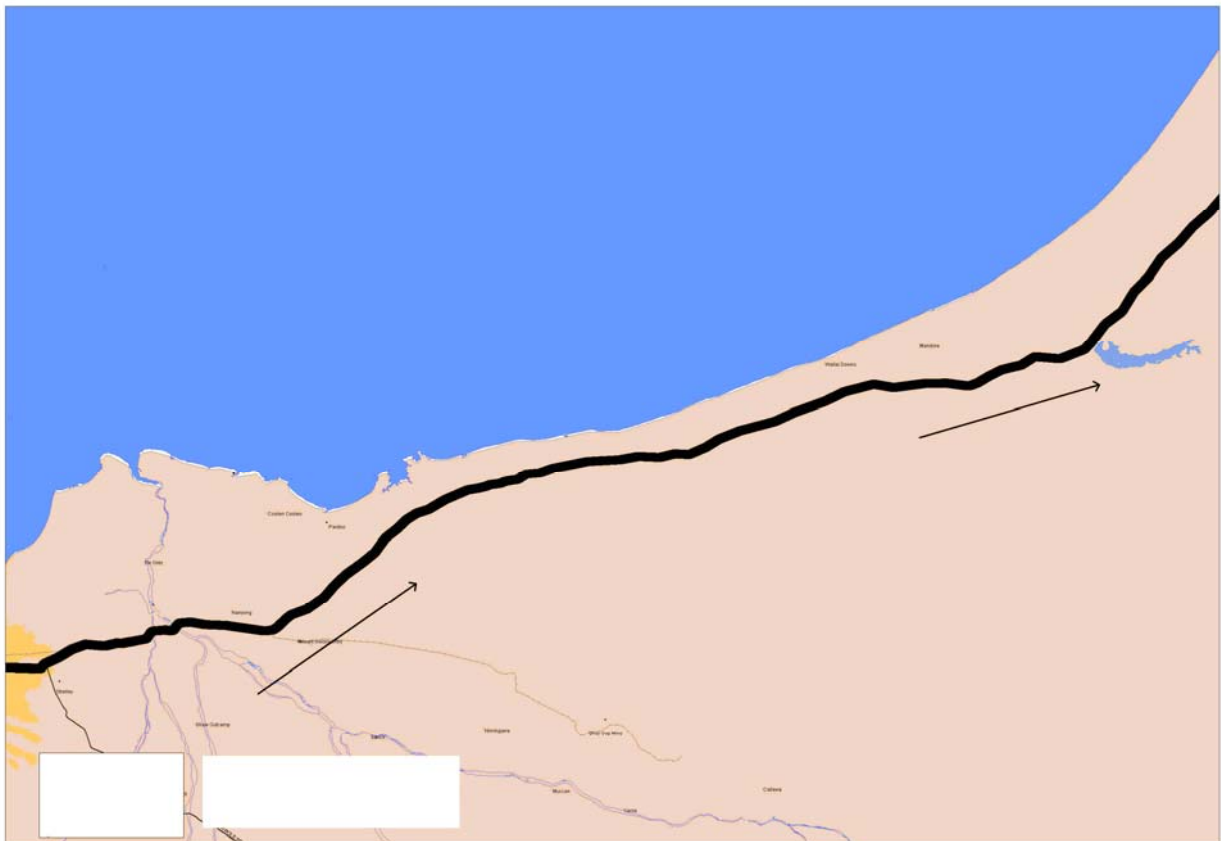
Map 18: Telstra CDMA vs NEXTG Coverage - Coral Bay Dampier (Nov 2007)



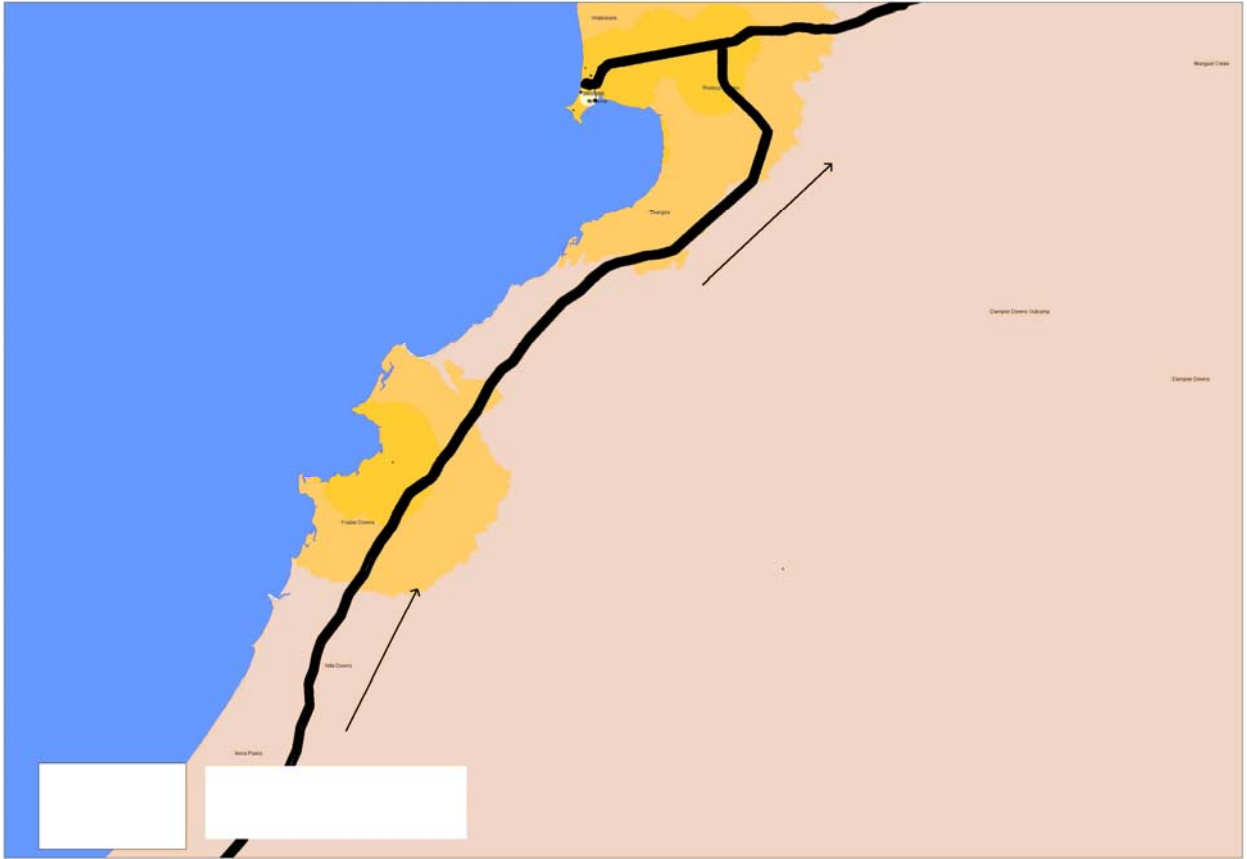
Map 19: Telstra CDMA vs NEXTG Coverage - Dampier to Port Hedland (Nov 2007)



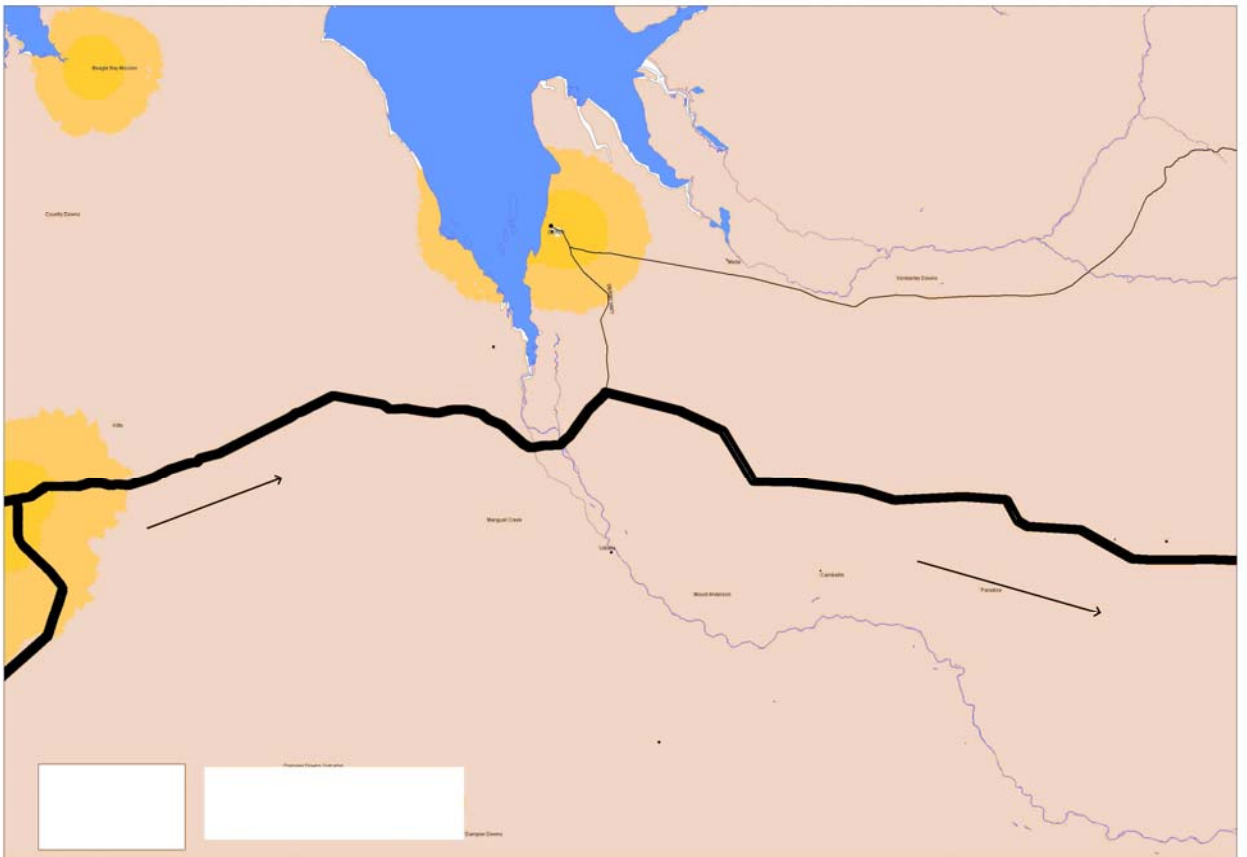
Map 20: Telstra CDMA vs NEXTG Coverage - Port Hedland to Eighty Mile Beach (Nov 2007)



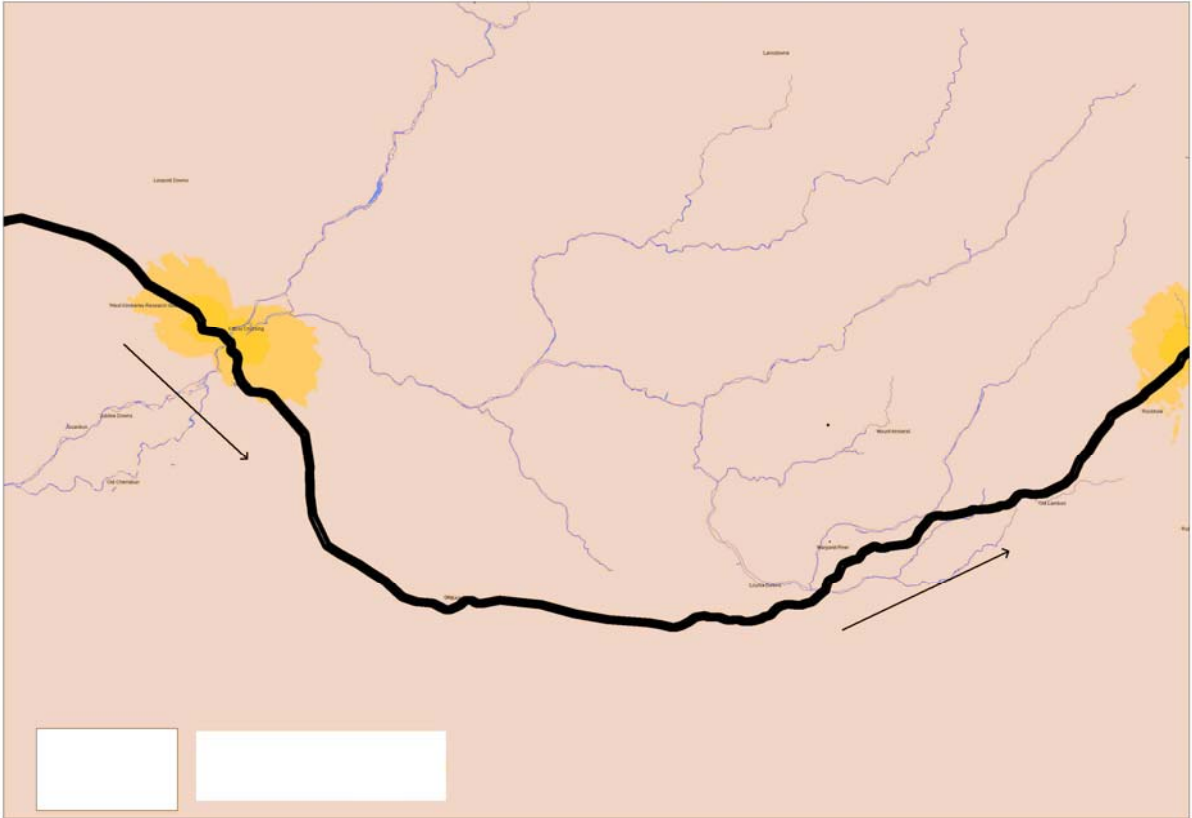
Map 21: Telstra CDMA vs NEXTG Coverage - Eighty Mile Beach to Broome (Nov 2007)



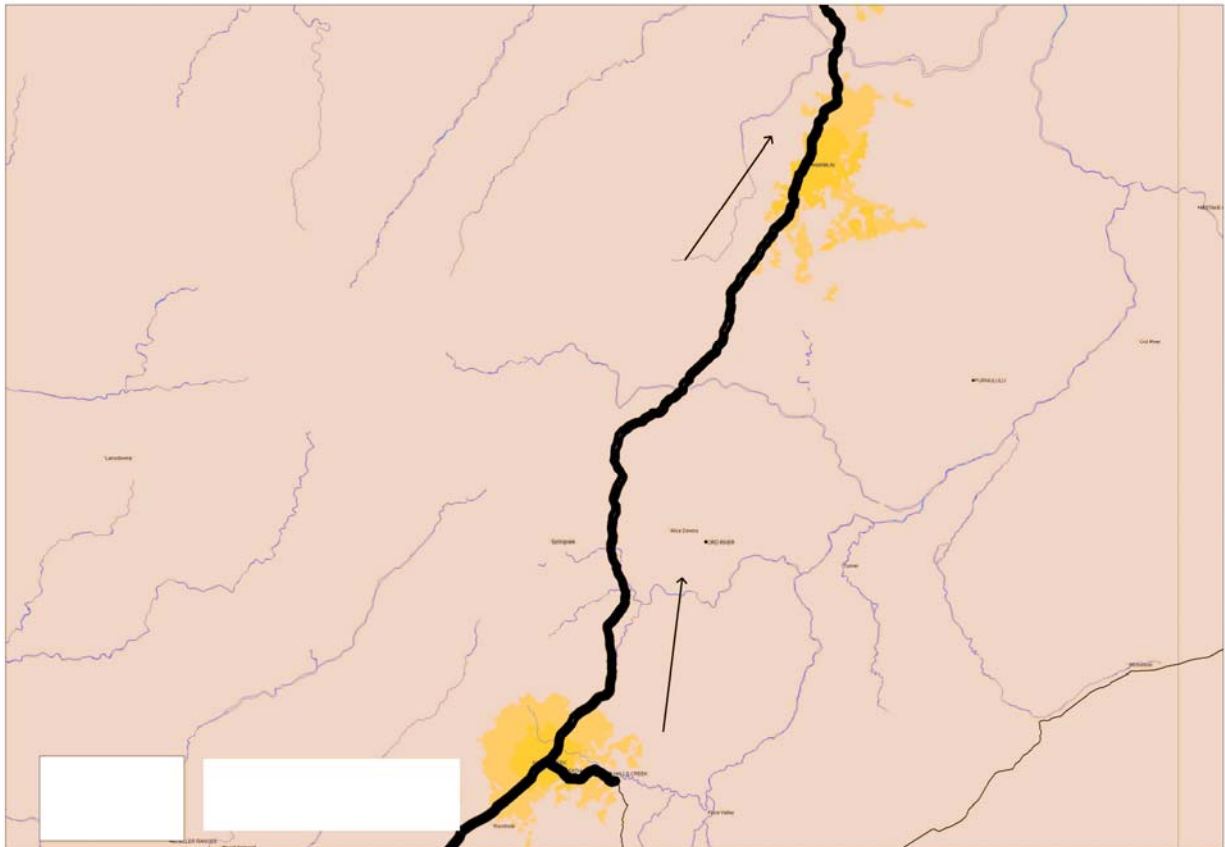
Map 22: Telstra CDMA vs NEXTG Coverage - Broome to Paradise (Nov 2007)



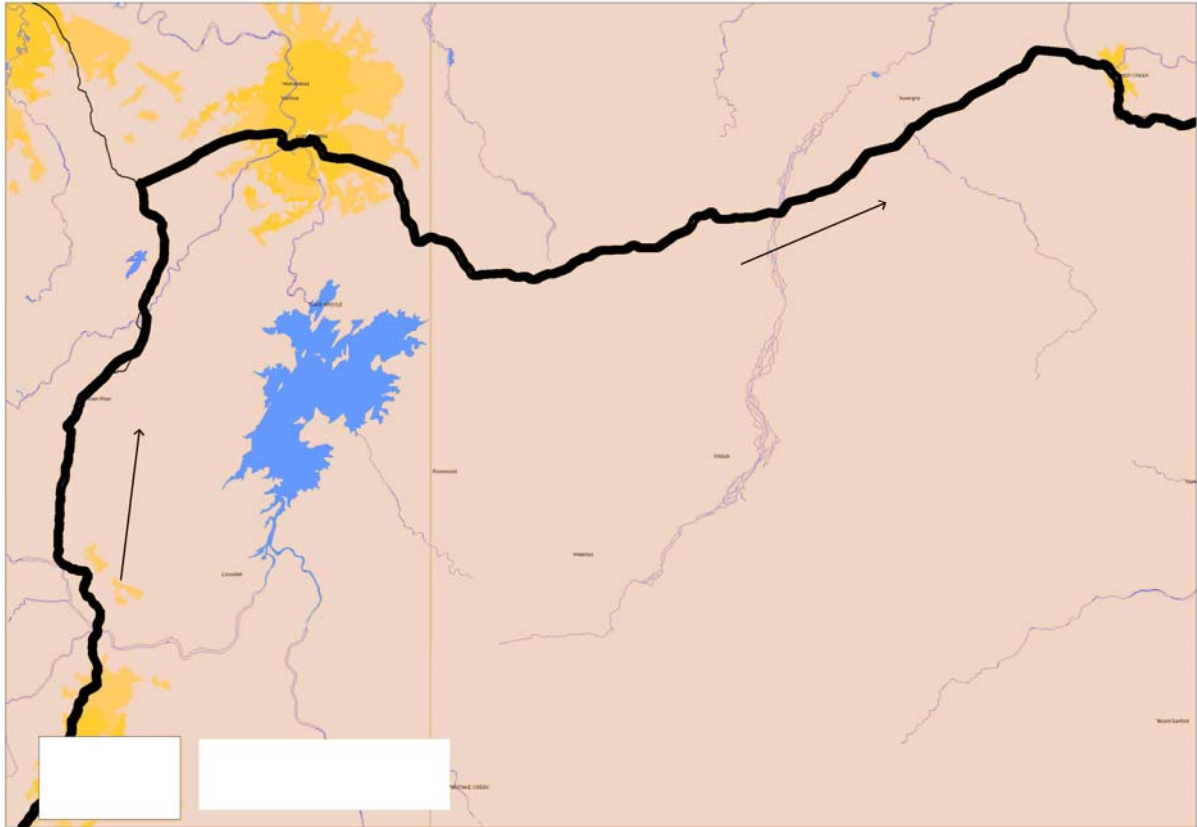
Map 23: Telstra CDMA vs NEXTG Coverage - Paradise to Halls Creek (Nov 2007)



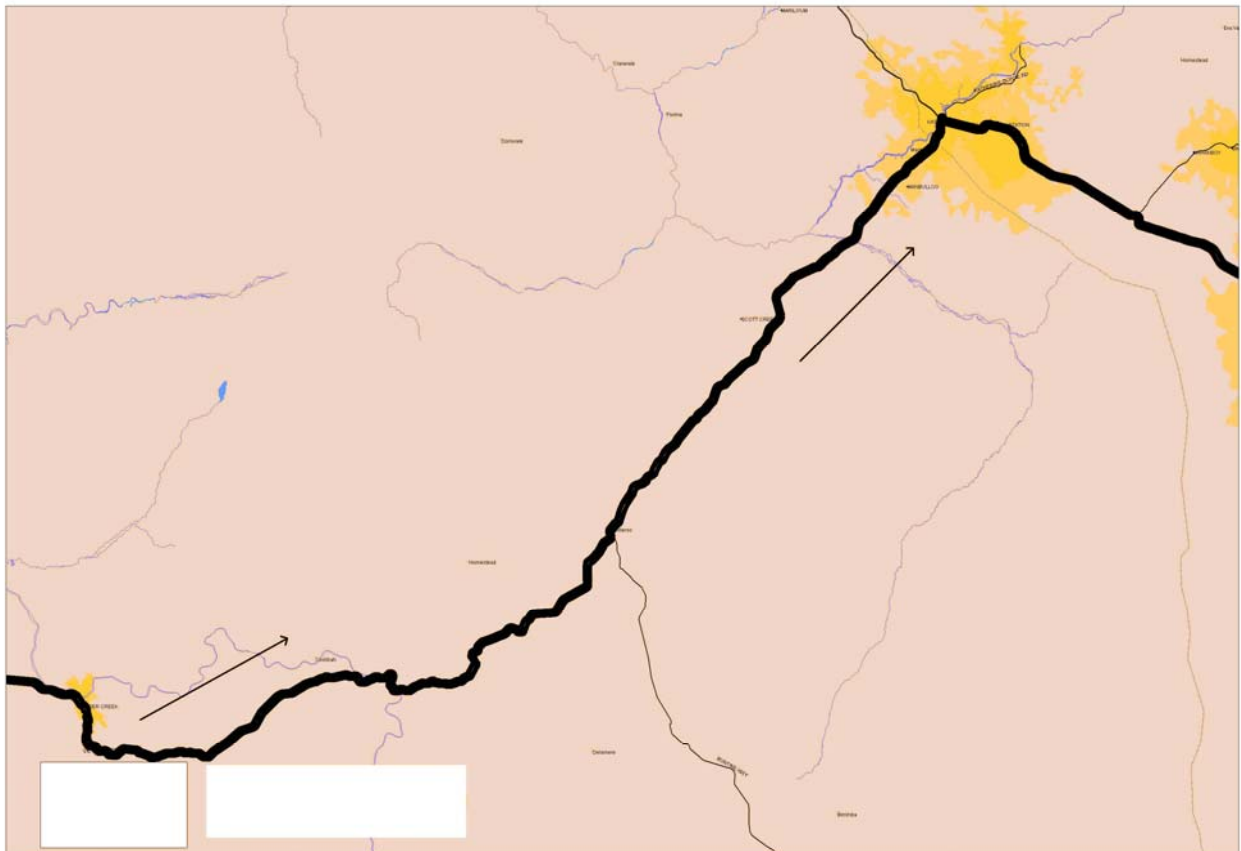
Map 24: Telstra CDMA vs NEXTG Coverage - Halls Creek to Warmun (Nov 2007)



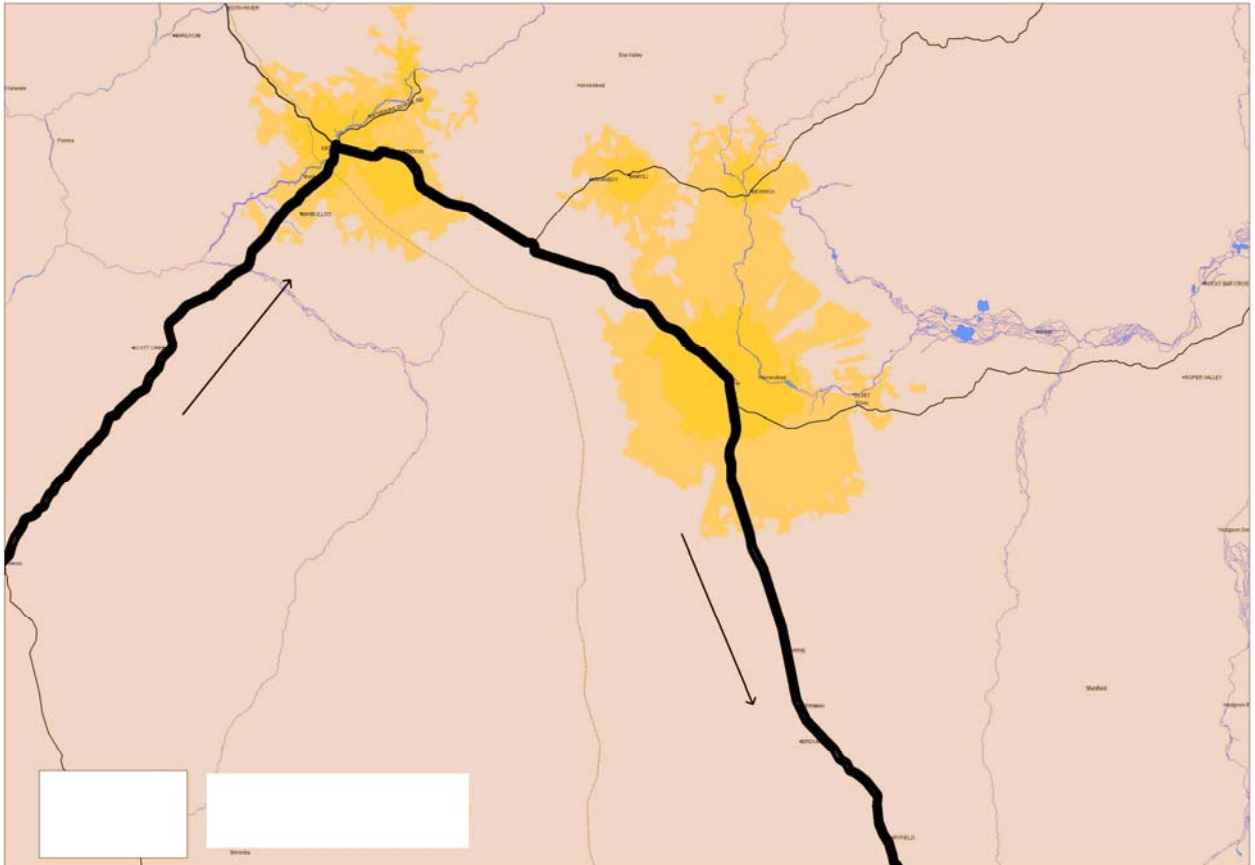
Map 25: Telstra CDMA vs NEXTG Coverage - Warmun to Timber Creek (Nov 2007)



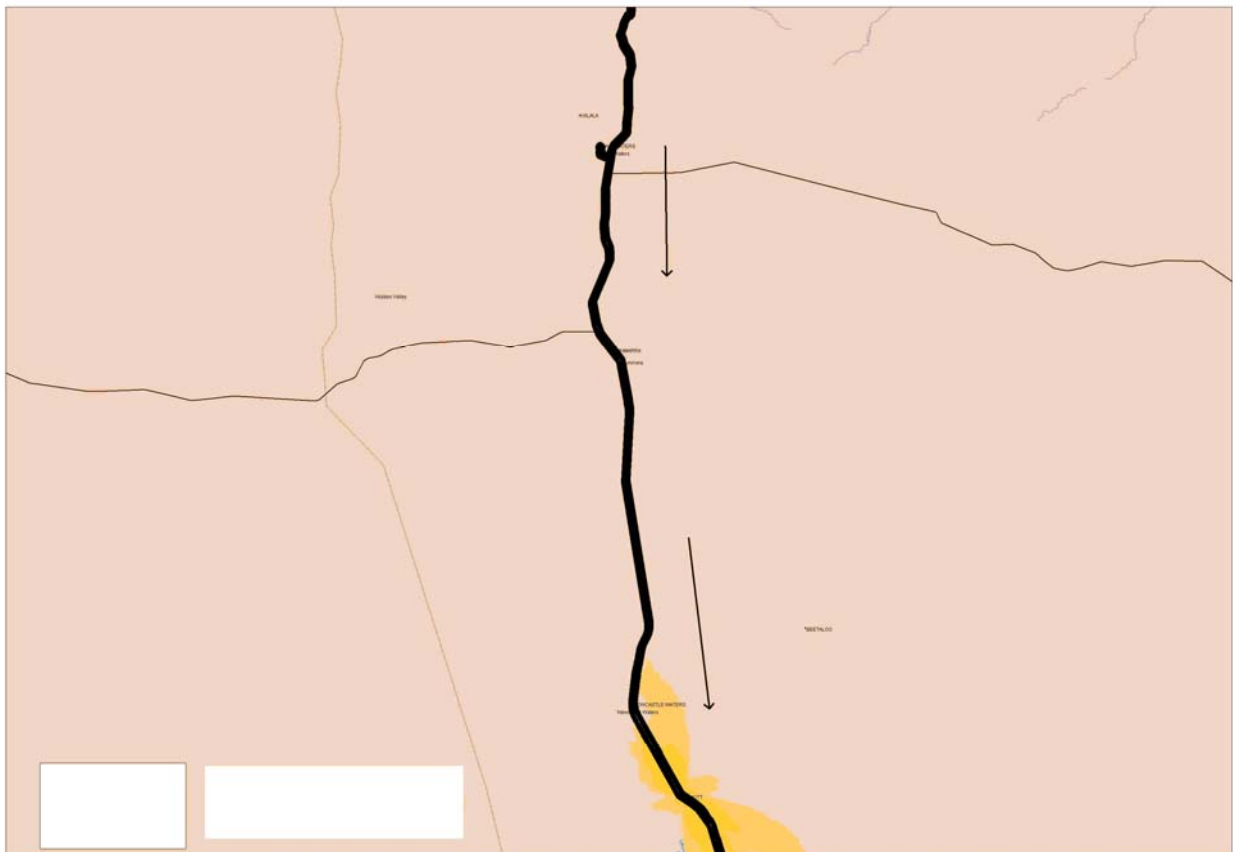
Map 26: Telstra CDMA vs NEXTG Coverage - Timber Creek to Katherine (Nov 2007)



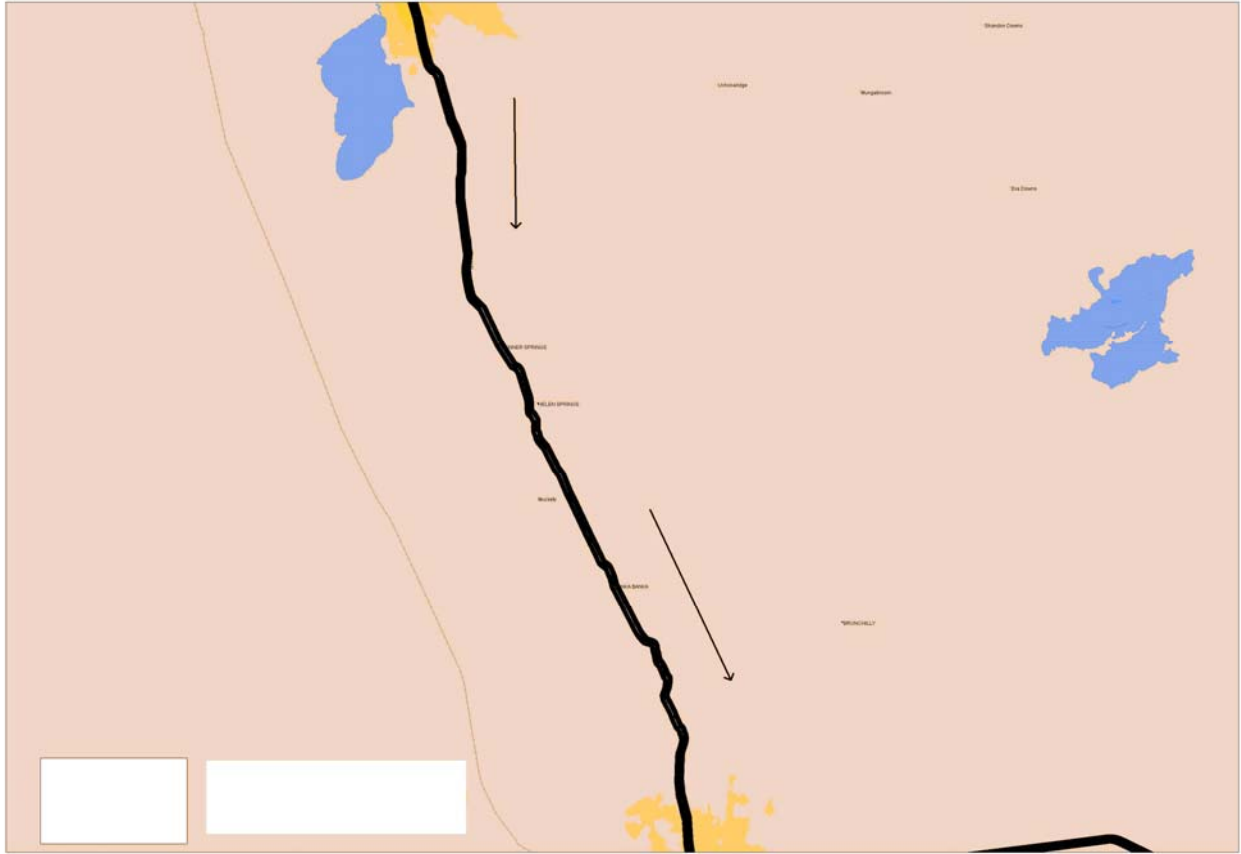
Map 27: Telstra CDMA vs NEXTG Coverage - Katherine to Birdum (Nov 2007)



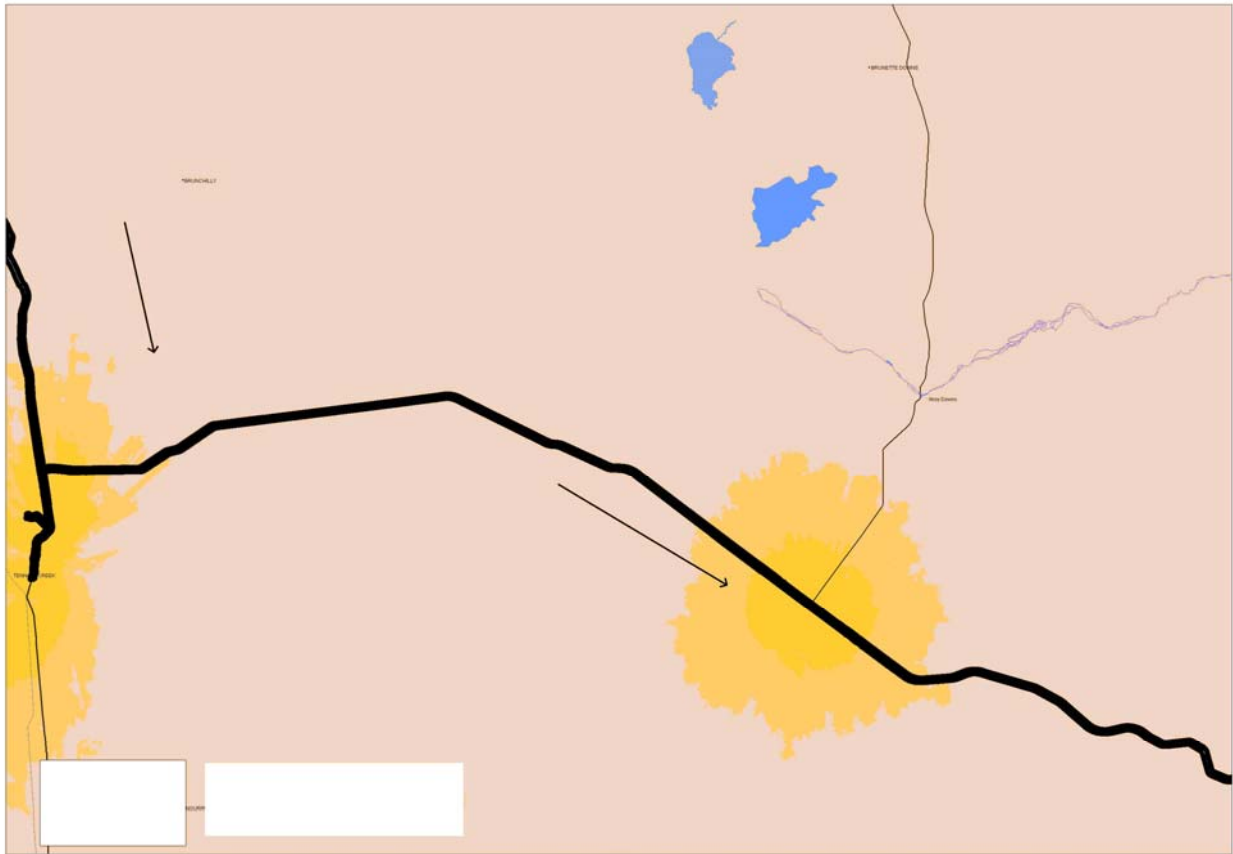
Map 28: Telstra CDMA vs NEXTG Coverage - Birdum to Elliot (Nov 2007)



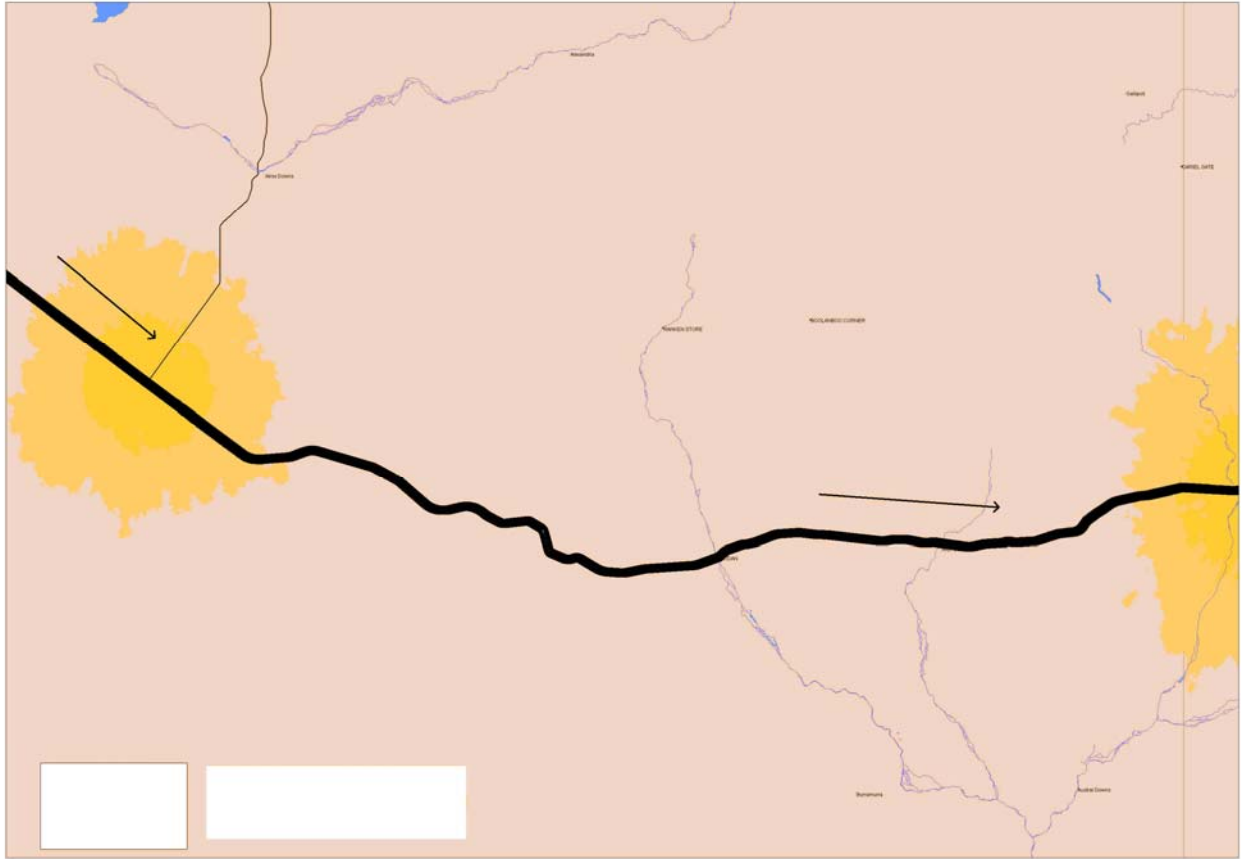
Map 29: Telstra CDMA vs NEXTG Coverage - Elliot to Three Ways (Nov 2007)



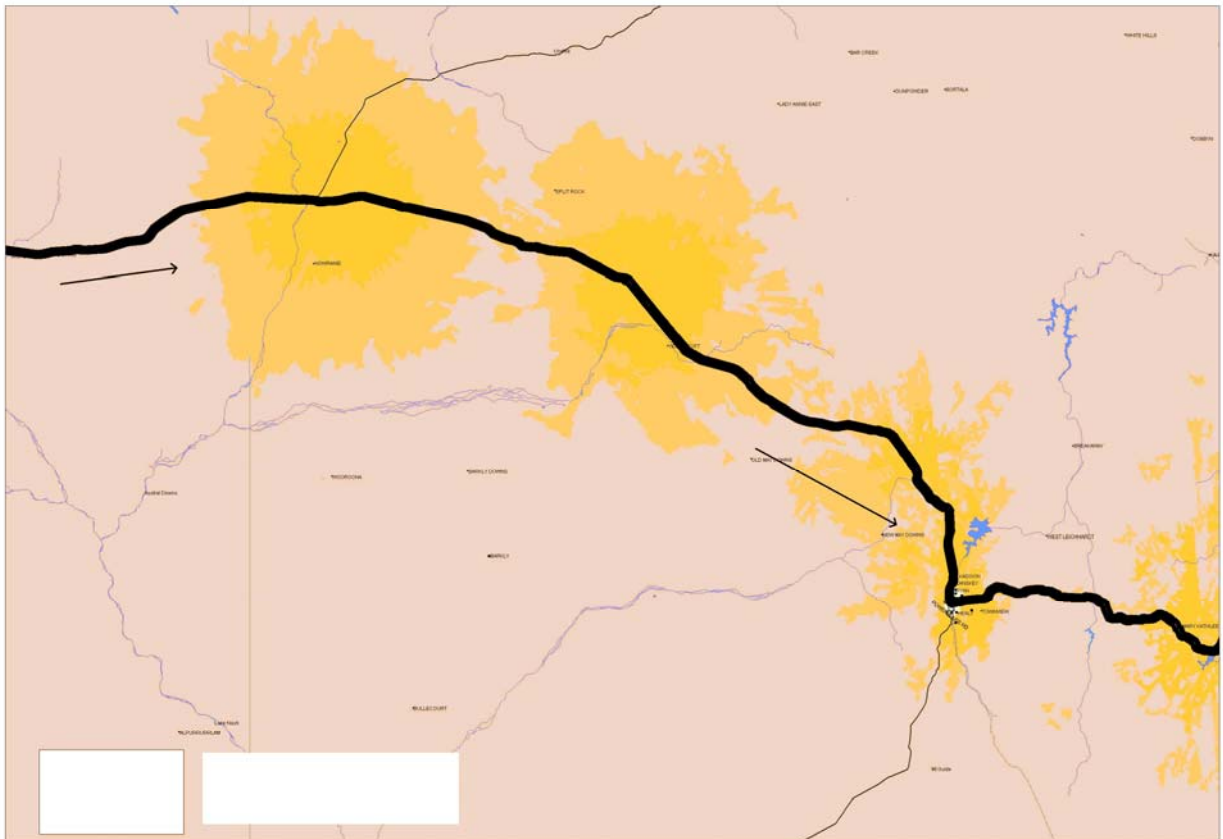
Map 30: Telstra CDMA vs NEXTG Coverage - Three Ways to Barkly Homestead (Nov 2007)



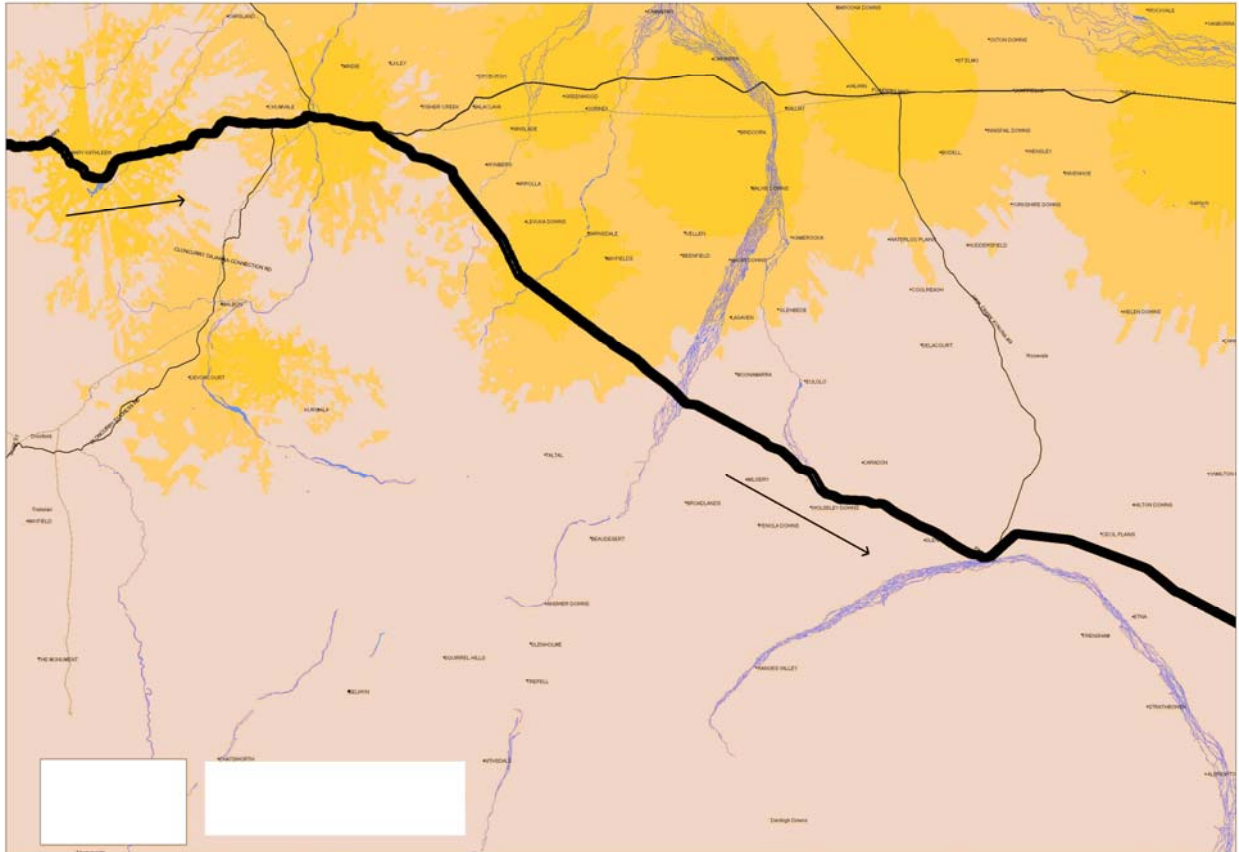
Map 31: Telstra CDMA vs NEXTG Coverage - Barkly Homestead to Camooweal (Nov 2007)



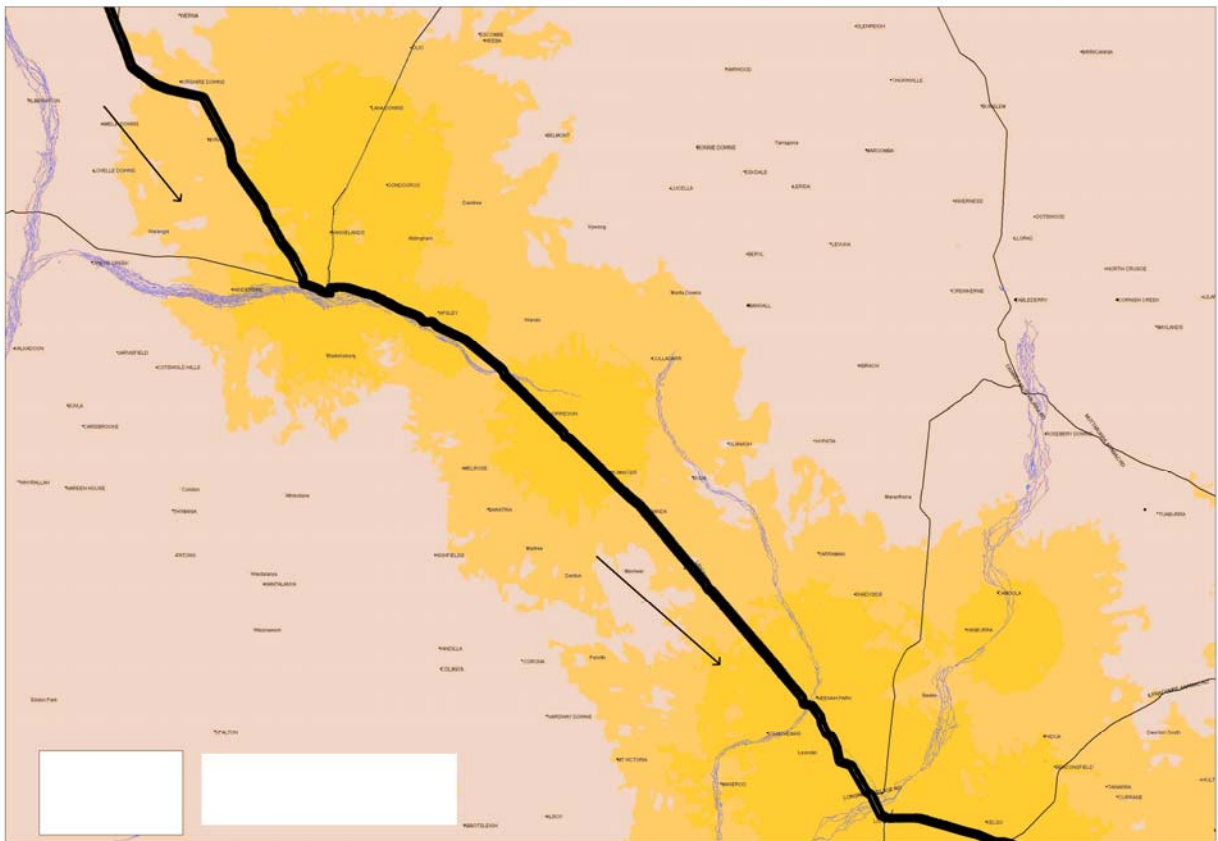
Map 32: Telstra CDMA vs NEXTG Coverage - Camooweal to Mary Kathleen (Nov 2007)



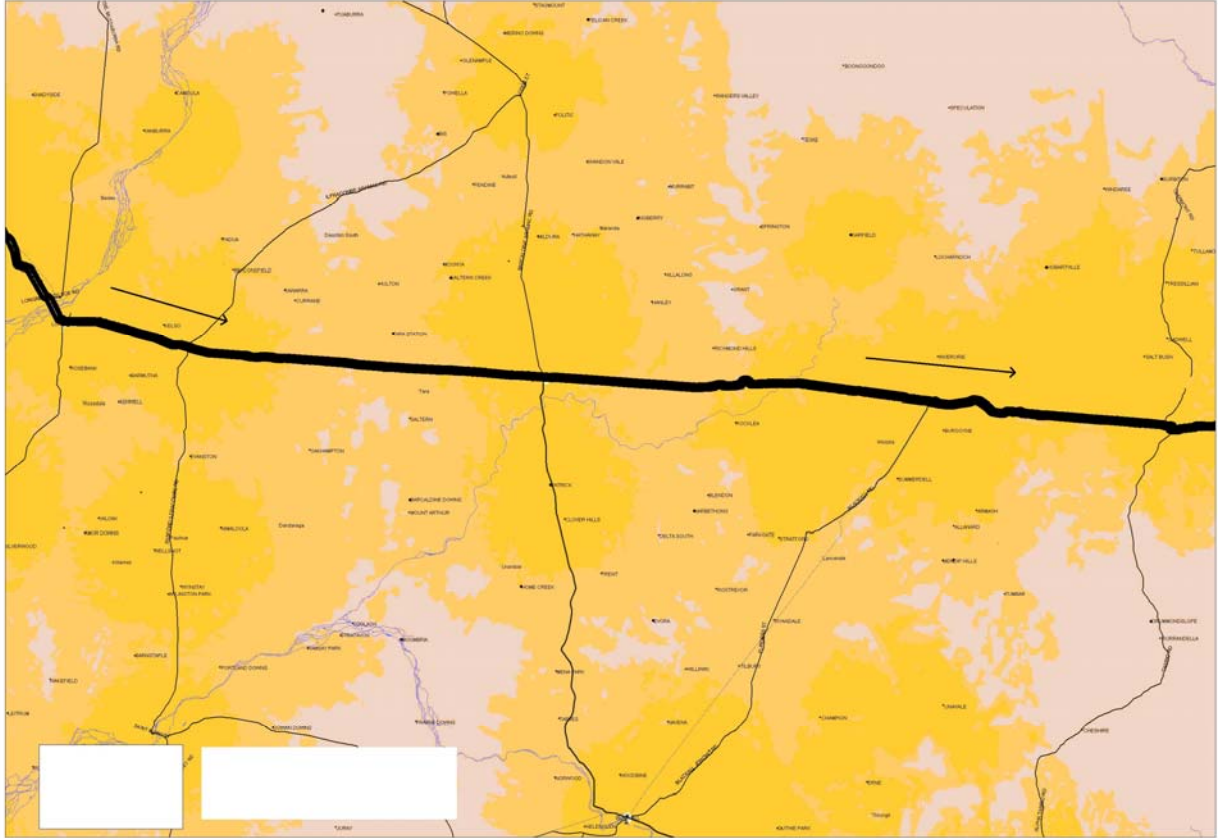
Map 33: Telstra CDMA vs NEXTG Coverage - Mary Kathleen to Etna (Nov 2007)



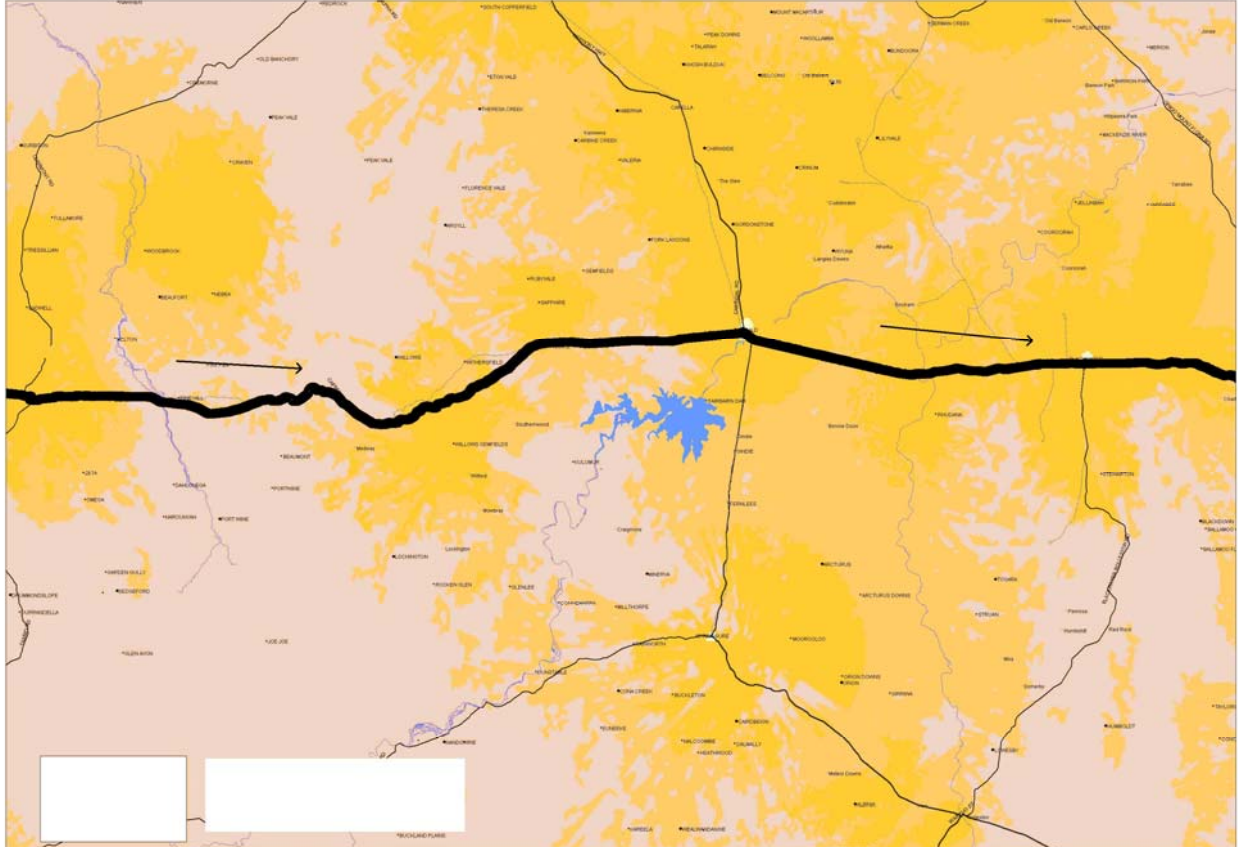
Map 34: Telstra CDMA vs NEXTG Coverage - Etna to Longreach (Nov 2007)



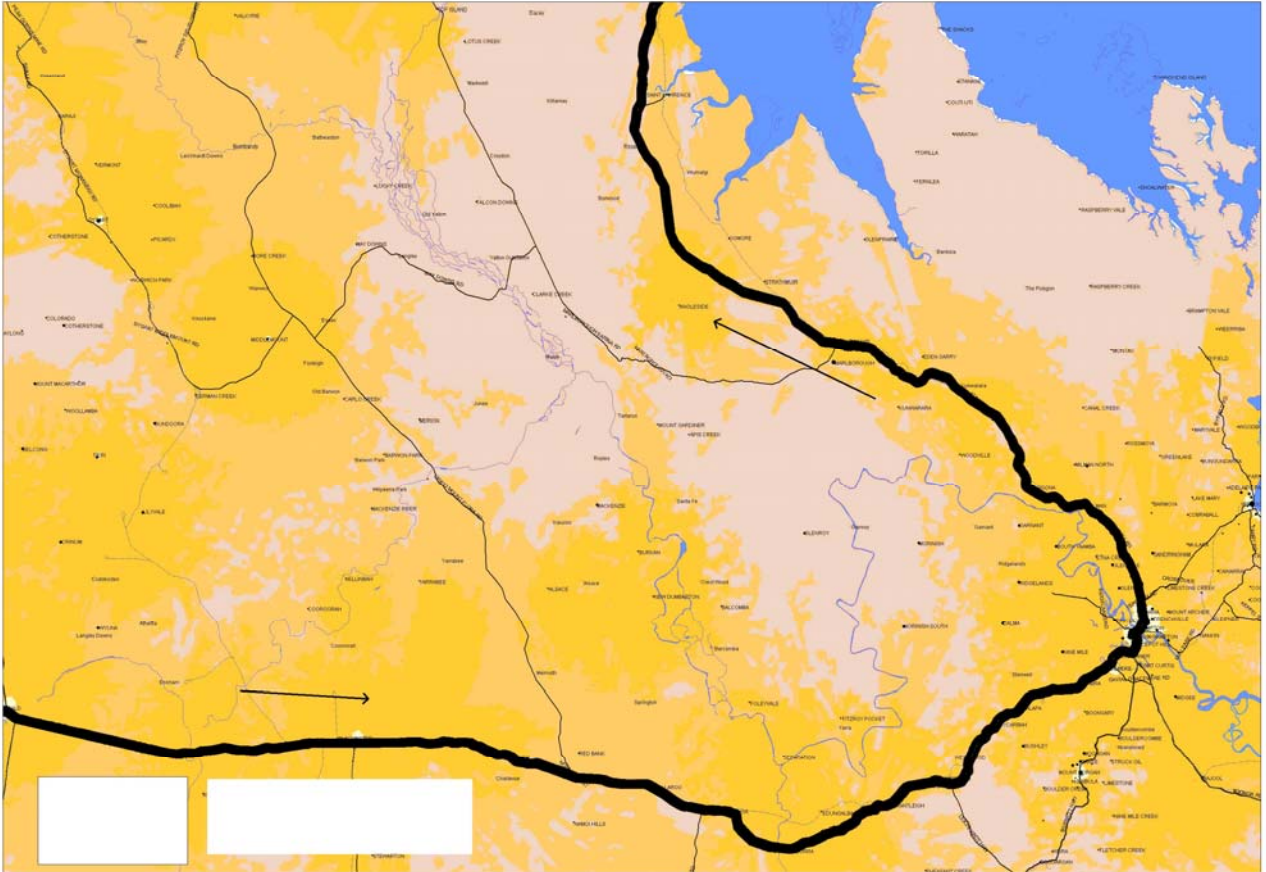
Map 35: Telstra CDMA vs NEXTG Coverage - Longreach to Alpha (Nov 2007)



Map 36: Telstra CDMA vs NEXTG Coverage - Alpha to Bluff (Nov 2007)



Map 37: Telstra CDMA vs NEXTG Coverage - Bluff to Angleside (Nov 2007)



Map 38: Telstra CDMA vs NEXTG Coverage - Angleside to Mackay (Nov 2007)

