

**Appendix 5**  
**Oakey PFOA and PFOS Detection Area and Investigation**  
**Area Maps**

**AACO PFOA DETECTION AREA  
AND INVESTIGATION AREA**



1 cm = 350 metres

Datum: GDA 1994, Projection: MGA Zone 56

**LEGEND**

**PFOA Concentrations (µg/L)**

- < LOR
- LOR - 0.4
- 0.4 - 9.99
- 10 - 49
- 50 - 500

Drainage

**Estimated PFOA Concentration Ranges (µg/L)**

- Limit of Reporting - 0.4
- 0.4 - 9.99
- 10 - 49
- 50 - 500

Investigation Area

Oakley Creek Groundwater

Management Area

AACO Base Boundary

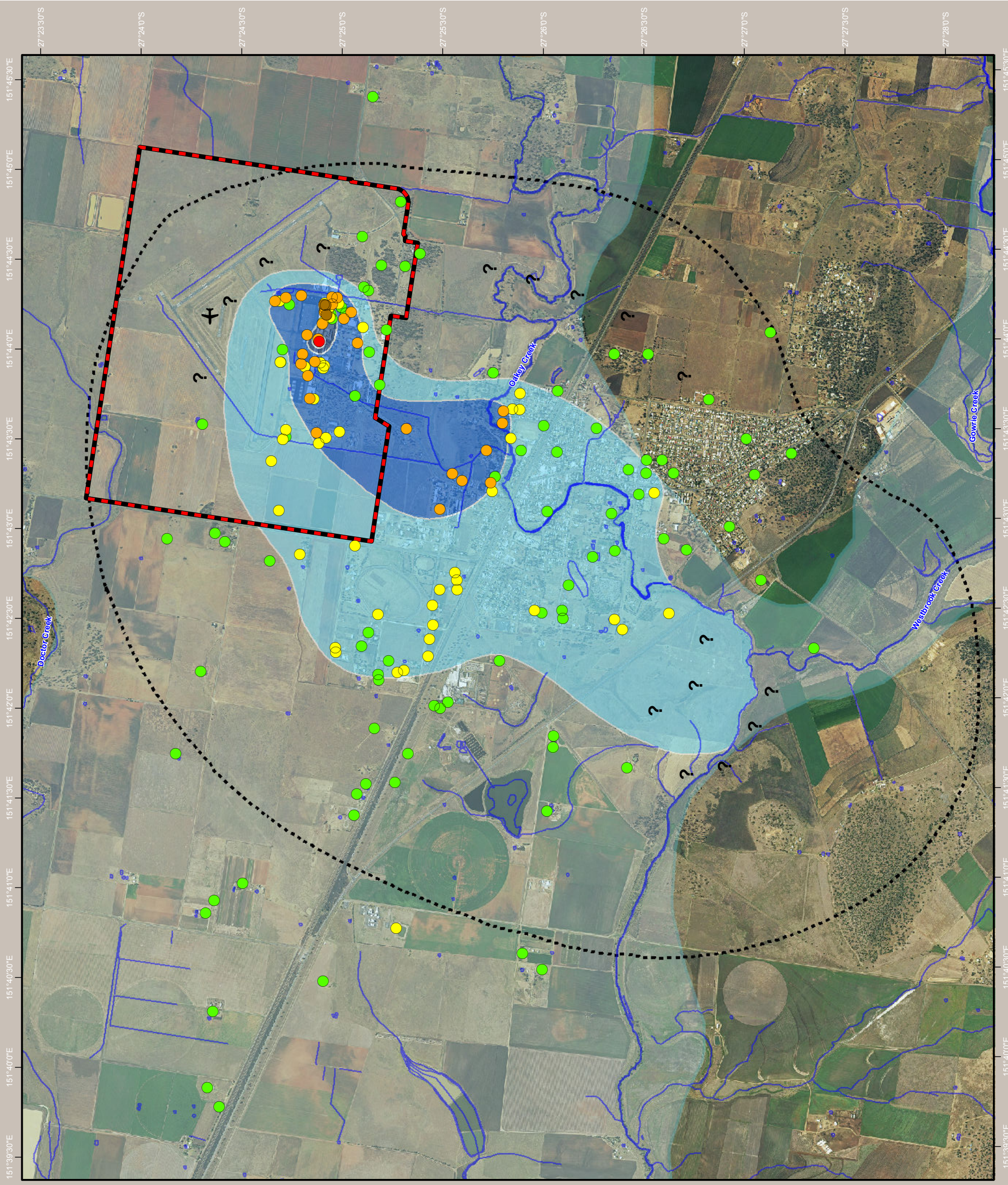
Indicates that limited data has been able to be collected in this area

**Disclaimers**

PFOA concentration ranges displayed on this figure are based on the highest PFOA detection reported for any given location (i.e. from one or more sampling events), which includes data from Parsons Brinckerhoff (2012-2013) and AECOM (2013-2015) groundwater investigations.

LOR = Laboratory Limit of Reporting. Note: This figure has been compiled to provide a visual representation of PFOA concentrations in sampled bores, and does not represent the full nature and extent of bore water impacts in the area, nor does it represent inferred aquifer conditions.

Bore water has been sampled directly from the bores represented on this figure at the point of extraction (i.e. at the ground surface or as close to the extraction point as possible). Details of bore construction is not available for all bores sampled, however those bore where construction information is available are not all screened within the same portion of the aquifer (i.e. the water sampled is not all from the same depth below ground) and caution should be taken in extrapolating PFOA concentrations between data points. The shading provided on this figure represents the area over which PFOA has been detected at various concentration intervals (refer to legend above). This figure is not intended to be used for the purpose of understanding the full extent of bore water and/or aquifer impacts, but provides an indication of potential exposure point concentrations. Caution should be used when using this figure for any other than for preliminary indicative purposes.



## AACO PFOS DETECTION AREA AND INVESTIGATION AREA



Datum: GDA 1994, Projection: MGA Zone 56

### LEGEND

#### PFOS Concentrations (µg/L)

- < LOR
- LOR - 0.2
- 0.2-9.99
- 10-49
- 50-500

Drainage

#### Estimated PFOS Concentration Ranges (µg/L)

- Limit of Reporting - 0.2
- 0.2 - 9.99
- 10 - 49
- 50 - 500

Investigation Area

Oakey Creek Groundwater

Management Area

AACO Base Boundary

Indicates that limited data has been able to be collected in this area

#### Disclaimers

PFOS concentration ranges displayed on this figure are based on the highest PFOS detection reported for any given location (i.e. from one or more sampling events), which includes data from Parsons Brinckerhoff (2012-2013) and AECOM (2013-2015) groundwater investigations.

LOR = Laboratory Limit of Reporting. Note: This figure has been compiled to provide a visual representation of PFOS concentrations in sampled bores, and does not represent the full nature and extent of bore water impacts in the area, nor does it represent inferred aquifer conditions.

Bore water has been sampled directly from the bores represented on this figure at the point of extraction (i.e. at the ground surface or as close to the extraction point as possible). Details of bore construction is not available for all bores sampled, however those bore where construction information is available are not all screened within the same portion of the aquifer (i.e. the ground) and caution should be taken in extrapolating PFOS concentrations between data points. The shading provided on this figure represents the area over which PFOS has been detected at various concentration intervals (refer to legend above). This figure is not intended to be used for the purpose of understanding the full extent of bore water and/or aquifer impacts, but provides an indication of potential exposure point concentrations. Caution should be used when using this figure for any other than for preliminary indicative purposes.

