

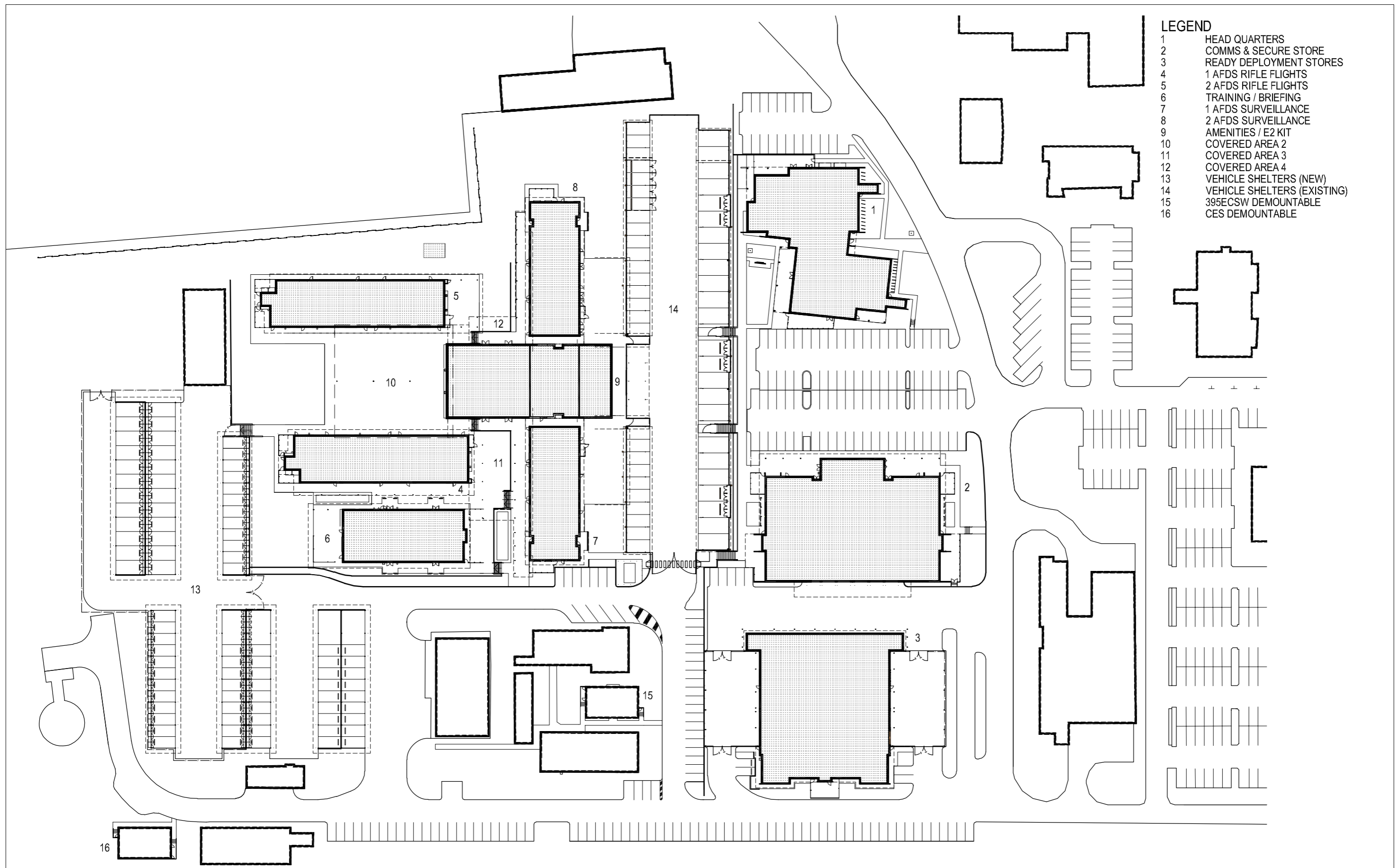
RAAF Base Amberley, Ipswich

47. RAAF Base Amberley Site Map
48. No 1 and No 2 Air Field Defence Squadrons Precinct Plan
49. No 1 and No 2 Air Field Defence Squadrons Headquarters Ground Floor Plan
50. No 1 and No 2 Air Field Defence Squadrons Headquarters First Floor Plan
51. No 1 and No 2 Air Field Defence Squadrons Rifle Flights Floor Plan
52. No 1 and No 2 Air Field Defence Squadrons Rifle Flights Training Facility Floor Plan
53. No 1 and No 2 Air Field Defence Squadrons Support Flight – Surveillance, Reconnaissance and Recovery Sections, PAF Cadre and Military Working Dog Section Floor Plan
54. No 1 and No 2 Air Field Defence Squadrons Support Flight – Communications Section and Armoury Floor Plan
55. No 1 and No 2 Air Field Defence Squadrons Support Flight – Ready Deployment Stores and Assault Pioneers Floor Plan (East)
56. No 1 and No 2 Air Field Defence Squadrons Support Flight – Ready Deployment Stores and Assault Pioneers Floor Plan (West)
57. No 1 and No 2 Air Field Defence Squadrons Vehicle Shelters Plan
58. 21st Construction Squadron Precinct Plan
59. 21st Construction Squadron Headquarters Floor Plan
60. 21st Construction Squadron Operational Support Troop Facility Floor Plan
61. 21st Construction Squadron Workshop Floor Plan
62. 21st Construction Squadron Construction Troop Facility Floor Plan
63. 21st Construction Squadron Resources Troop Facility Floor Plan
64. 21st Construction Squadron Plant Troop Facility Floor Plan



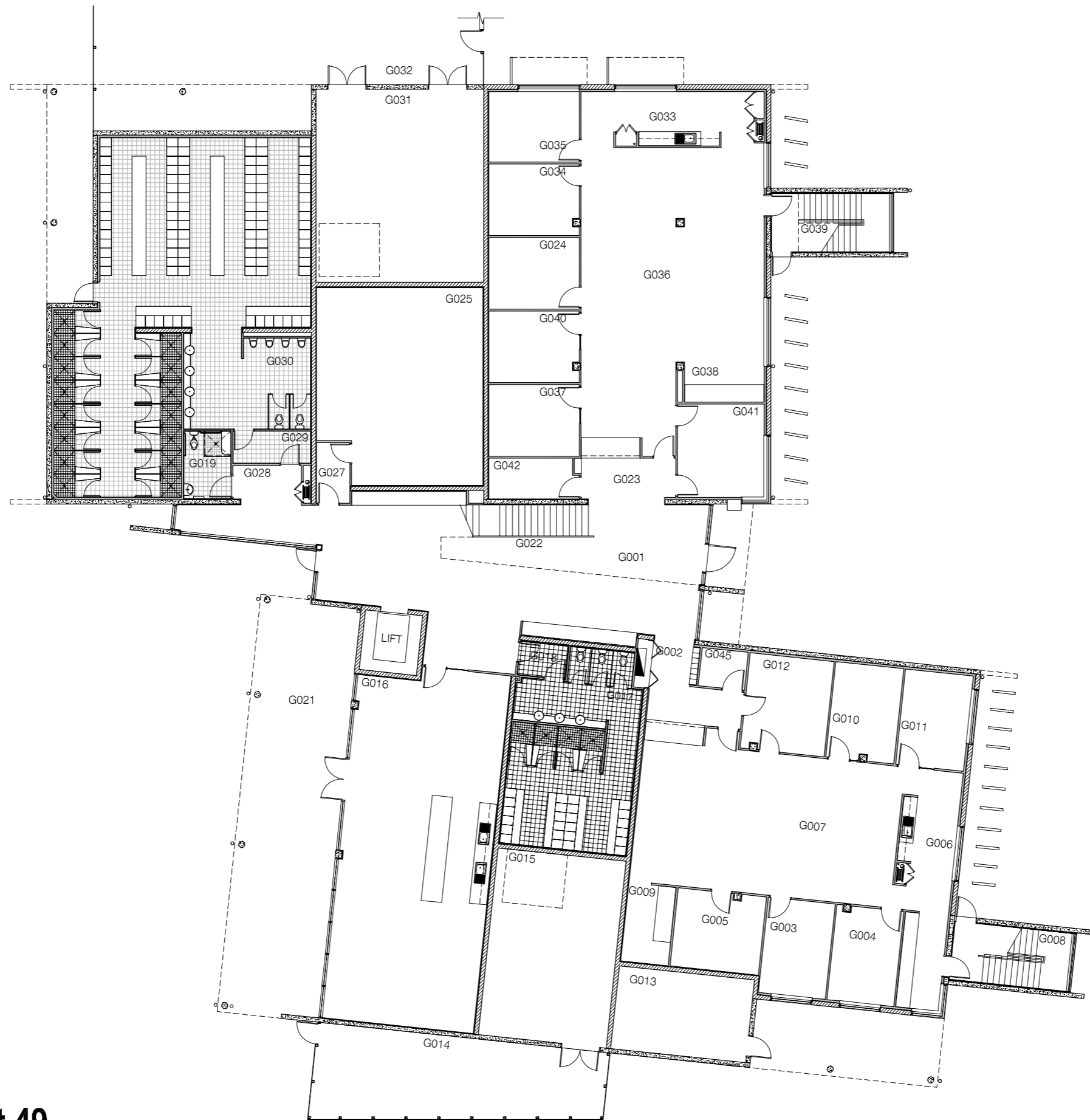
- LEGEND**
- 1 ATTACHED PROPERTY 2
 - 2 RIFLE FLIGHTS
 - 3 SFS

Attachment 47
RAAF Base Amberley Site Map



- LEGEND**
- 1 HEAD QUARTERS
 - 2 COMMS & SECURE STORE
 - 3 READY DEPLOYMENT STORES
 - 4 1 AFDS RIFLE FLIGHTS
 - 5 2 AFDS RIFLE FLIGHTS
 - 6 TRAINING / BRIEFING
 - 7 1 AFDS SURVEILLANCE
 - 8 2 AFDS SURVEILLANCE
 - 9 AMENITIES / E2 KIT
 - 10 COVERED AREA 2
 - 11 COVERED AREA 3
 - 12 COVERED AREA 4
 - 13 VEHICLE SHELTERS (NEW)
 - 14 VEHICLE SHELTERS (EXISTING)
 - 15 395CSW DEMOUNTABLE
 - 16 CES DEMOUNTABLE

Attachment 48
No 1 and No 2 Air Field Defence Squadrons Precinct Plan



LEGEND

| | |
|------|-----------------------|
| G001 | ENTRY LOBBY |
| G002 | FOYER 1 |
| G003 | ARCHIVES |
| G004 | STORE |
| G005 | REGISTRY |
| G006 | BREW/UTILITY |
| G007 | ADMINISTRATION 1 |
| G008 | STAIR |
| G009 | UTILITY |
| G010 | SNCO |
| G011 | ADMIND |
| G012 | MEETING |
| G013 | COMMS |
| G014 | EXTERNAL PLANT AREA 1 |
| G015 | PLANT |
| G016 | BREW |
| G017 | FEMALE AMENITIES |
| G018 | FEMALE AIR LOCK |
| G019 | PWD AMENITIES |
| G020 | CORRIDOR |
| G021 | TERRACE |
| G022 | STAIR |
| G023 | FOYER 2 |
| G024 | ARCHIVES |
| G025 | CONFERENCE |
| G027 | AIR LOCK |
| G028 | CORRIDOR |
| G029 | AIR LOCK |
| G030 | MALE AMENITIES |
| G031 | PLANT |
| G032 | EXTERNAL PLANT AREA 2 |
| G033 | BREW |
| G034 | REGISTRY |
| G035 | STORE |
| G036 | ADMINISTRATION 2 |
| G037 | SNCO |
| G038 | UTILITY |
| G039 | STAIR |
| G040 | ADMIND |
| G041 | MEETING |
| G042 | KEYS |
| G045 | KEYS |

Attachment 49
No 1 and No 2 Air Field Defence Squadrons Headquarters Ground Floor Plan

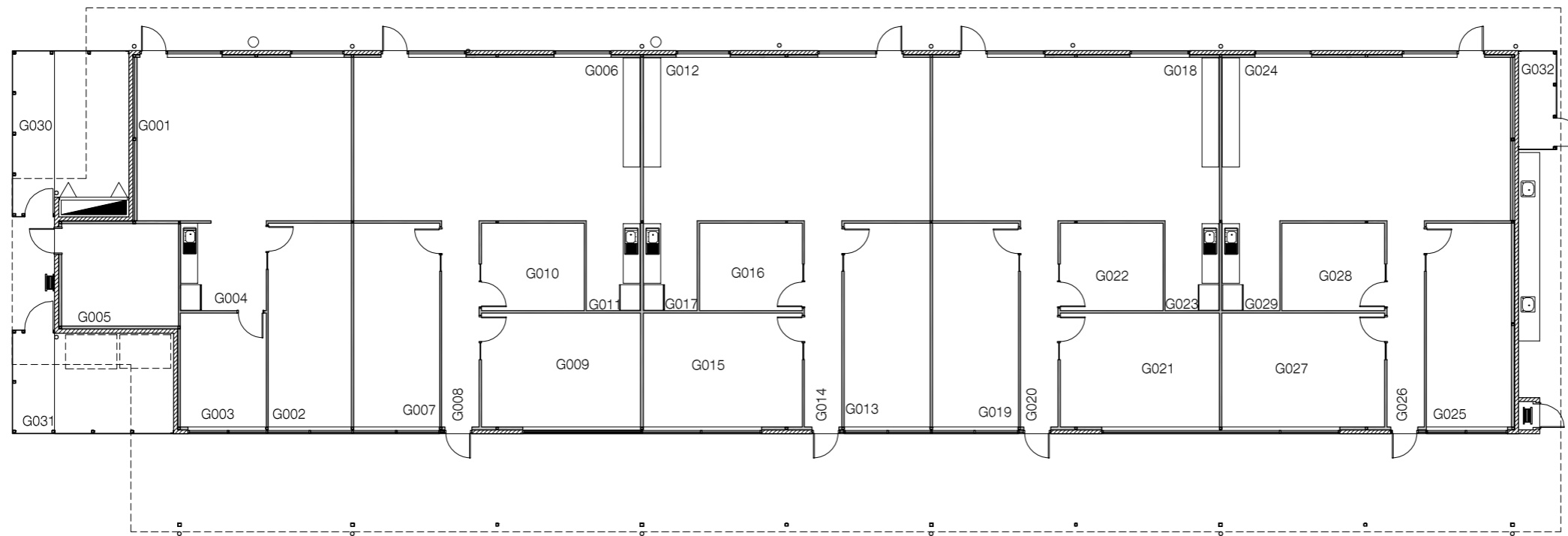


LEGEND

| | |
|------|------------------------|
| F001 | ENTRY LOBBY |
| F002 | FOYER 1 |
| F003 | SERVICE |
| F004 | BREW / UTILITY |
| F005 | MEETING |
| F006 | CORRIDOR |
| F007 | COMMS |
| F008 | CORRIDOR |
| F009 | CLEANER |
| F010 | MALE AMENITIES |
| F011 | OFFICE |
| F012 | OFFICE |
| F013 | BREW |
| F014 | OFFICE |
| F015 | UTILITY |
| F016 | OFFICE |
| F017 | OFFICE |
| F018 | OFFICE |
| F019 | UTILITY |
| F020 | OPSO / PLANSO / OPS SG |
| F021 | SECURE AREA PLANNING |
| F022 | INTELLO |
| F023 | INT CELL |
| F024 | MEETING |
| F025 | CORRIDOR |
| F026 | ADMINISTRATION 2B |
| F027 | LESSON PREP |
| F028 | RESOURCES |
| F029 | PAMS |
| F030 | MAPS |
| F031 | MEETING |
| F032 | CORRIDOR |
| F033 | FEMALE AMENITIES |
| F035 | OFFICE |
| F036 | CORRIDOR |
| F037 | SERVICE |
| F038 | BREW / UTILITY |
| F039 | MEETING |
| F040 | MAPS |
| F041 | PAMS |
| F042 | RESOURCES |
| F043 | LESSON PREP |
| F044 | ADMINISTRATION 1B |
| F045 | CORRIDOR |
| F046 | MEETING |
| F047 | INT CELL |
| F048 | INTELLO |
| F049 | SECURE AREA PLANNING |
| F050 | OPSO / PLANSO / OPS SG |
| F051 | OFFICE |
| F052 | OFFICE |
| F053 | OFFICE |
| F054 | BREW / UTILITY |
| F055 | OFFICE |
| F056 | OFFICE |
| F057 | MEETING |
| F058 | BMS/SECURITY |
| F059 | UTILITY |

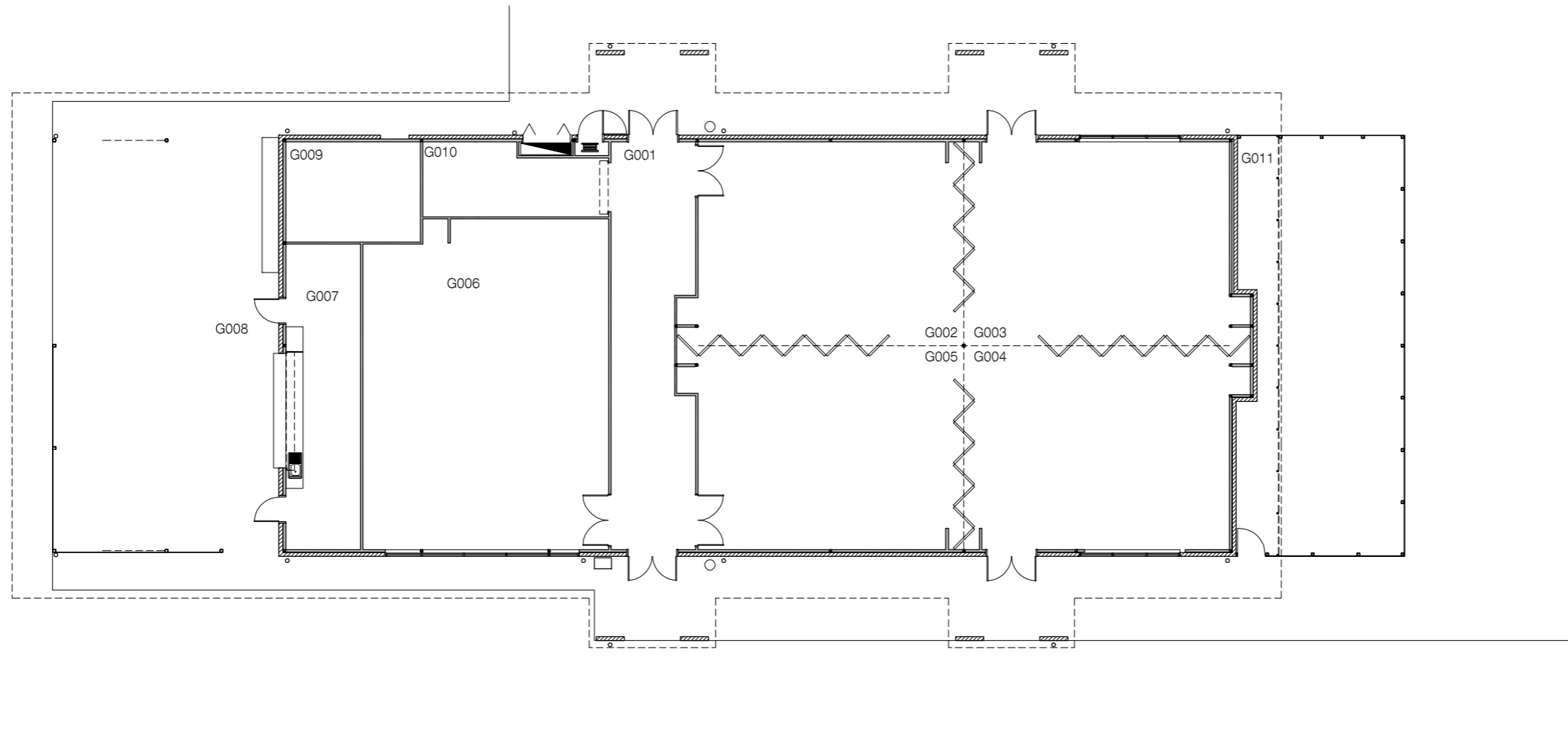
Attachment 50
No 1 and No 2 Air Field Defence Squadrons Headquarters First Floor Plan

- LEGEND
- G001 DUTY ROOM
 - G002 CPL MWD
 - G003 DLO
 - G004 BREW
 - G005 COMMS
 - G006 DUTY ROOM
 - G007 SECT SNCO
 - G008 CORRIDOR
 - G009 CDR SNCO
 - G010 MEETING
 - G011 BREW
 - G012 DUTY ROOM
 - G013 SECT SNCO
 - G014 CORRIDOR
 - G015 CDR SNCO
 - G016 MEETING
 - G017 BREW
 - G018 DUTY ROOM
 - G019 SECT SNCO
 - G020 CORRIDOR
 - G021 CDR SNCO
 - G022 MEETING
 - G023 BREW
 - G024 DUTY ROOM
 - G025 SECT SNCO
 - G026 CORRIDOR
 - G027 CDR SNCO
 - G028 MEETING
 - G029 BREW
 - G030 AC ENCLOSURE
 - G031 DRYING COURT
 - G032 AC ENCLOSURE



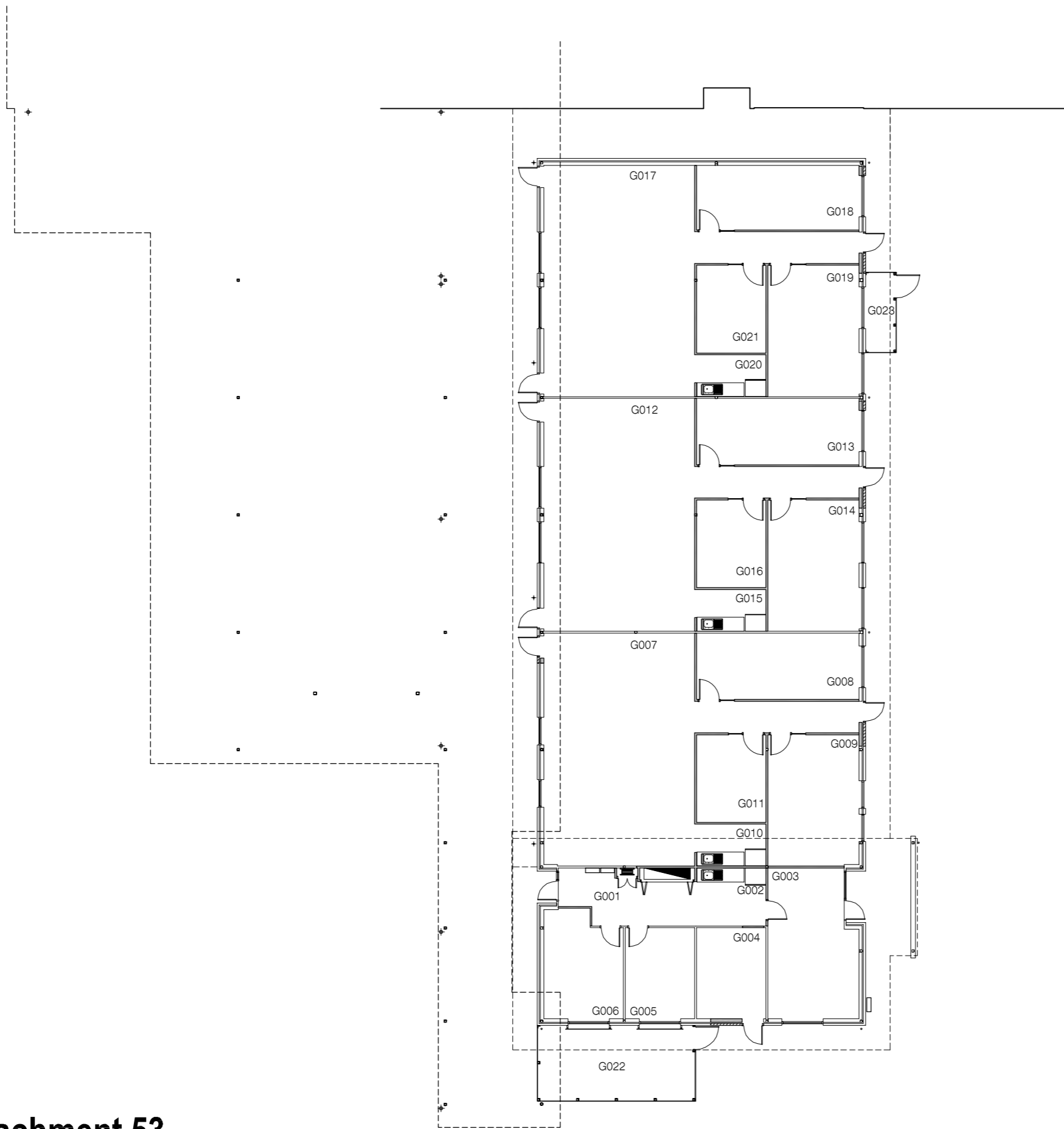
Attachment 51
No 1 and No 2 Air Field Defence Squadrons 1 AFDS Rifle Flights Floor Plan

- LEGEND
- G001 ENTRY LOBBY
 - G002 CLASSROOM 1
 - G003 CLASSROOM 2
 - G004 CLASSROOM 3
 - G005 CLASSROOM 4
 - G006 COMPUTER CLASSROOM 1
 - G007 BREW
 - G008 EXTERNAL TRAINING AREA
 - G009 COMMS
 - G010 FURNITURE STORE
 - G011 AC ENCLOSURE



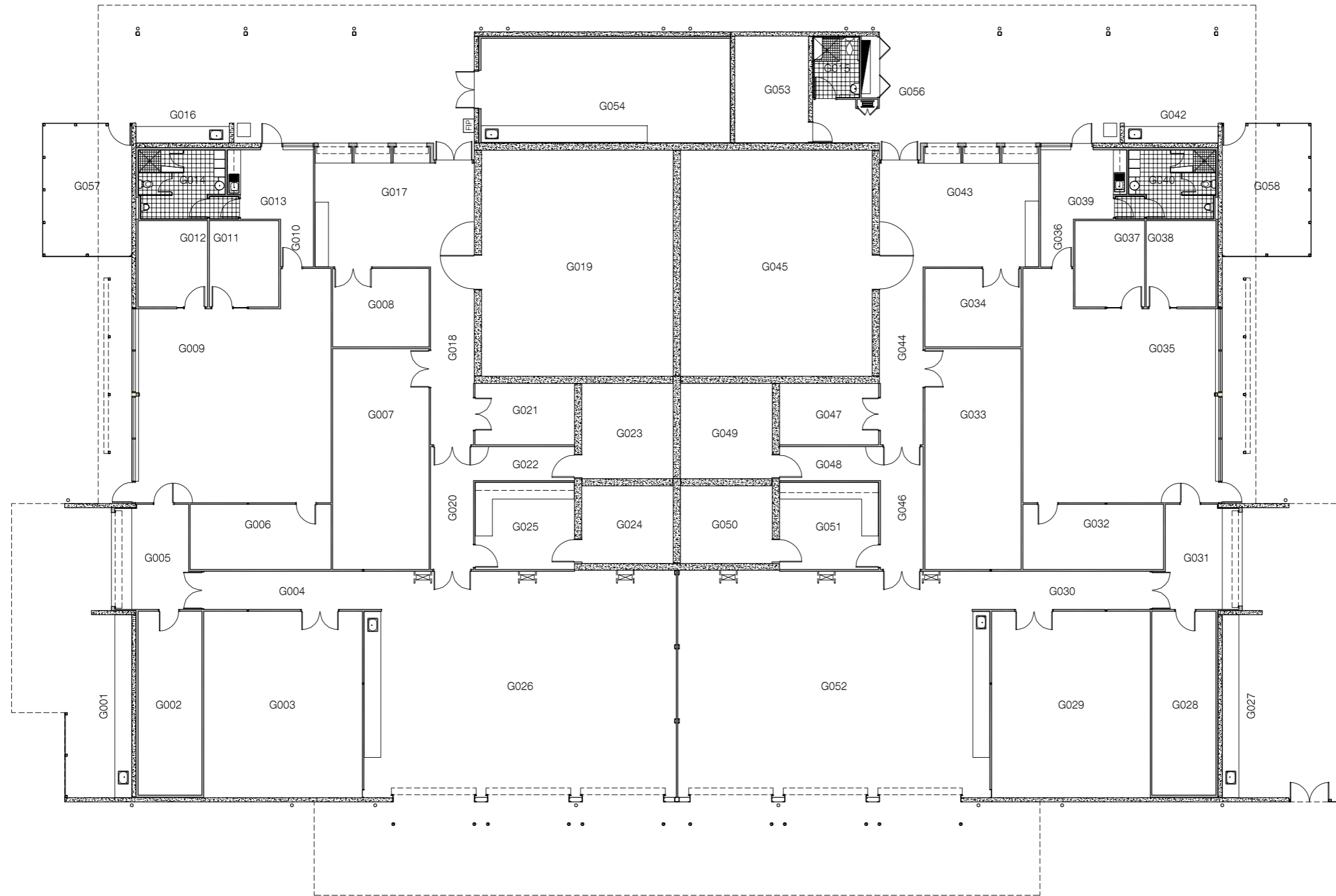
Attachment 52
No 1 and No 2 Air Field Defence Squadrons Rifle Flights Training Facility Floor Plan

| LEGEND | |
|--------|----------------------------------|
| G001 | PAF CADRE |
| G002 | BREW |
| G003 | SECT CDRS |
| G004 | COMMS |
| G005 | SNCO |
| G006 | CDR |
| G007 | TSS FLIGHT |
| G008 | CPL PTI |
| G009 | SUFFLT SGT.SGT PTI |
| G010 | BREW |
| G011 | MEETING |
| G012 | RECON SECTION |
| G013 | FLTCDR RECON |
| G014 | NCO RECON |
| G015 | BREW |
| G016 | MEETING |
| G017 | SURVEILLANCE SECTION |
| G018 | OIC SURV FLGOFF SURV NCO SURV |
| G019 | CDR SPTFLT SGT |
| G020 | BREW |
| G021 | SURV FLTLT |
| G022 | A/C ENCLOSURE |
| G023 | A/C ENCLOSURE |

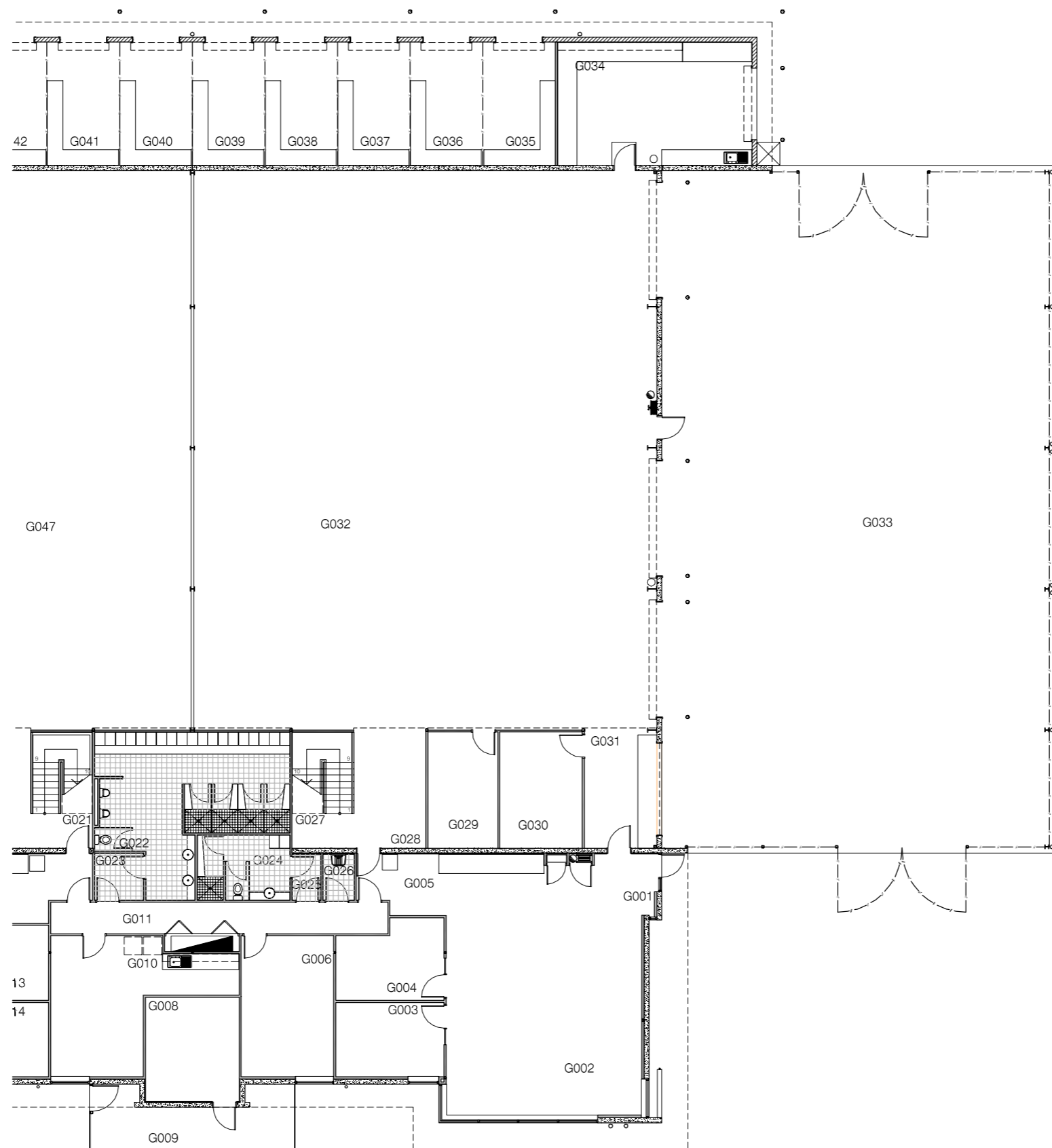


Attachment 53
No 1 and No 2 Air Field Defence Squadrons Support Flight 1 AFDS Surveillance Floor Plan

- LEGEND**
- G001 CLEANING
 - G002 BATTERY STORE
 - G003 COMMS. STORE
 - G004 CORRIDOR
 - G005 ISSUES
 - G006 STORE
 - G007 CBA
 - G008 NFE
 - G009 GENERAL OFFICE
 - G010 CORRIDOR
 - G011 MEETING
 - G012 OFFICE
 - G013 BREW
 - G014 AMENITIES
 - G015 PWD AMENITIES
 - G016 CLEANING
 - G017 ISSUES/PACKING
 - G018 CORRIDOR
 - G019 SECURE STORE
 - G020 CORRIDOR
 - G021 CES
 - G022 CORRIDOR
 - G023 CCI
 - G024 SERVER
 - G025 PREP. ROOM
 - G026 VEHICLE FITTING
 - G027 CLEANING
 - G028 BATTERY STORE
 - G029 COMMS. STORE
 - G030 CORRIDOR
 - G031 ISSUES
 - G032 STORE
 - G033 CBA
 - G034 NFE
 - G035 GENERAL OFFICE
 - G036 CORRIDOR
 - G037 MEETING
 - G038 OFFICE
 - G039 BREW
 - G040 AMENITIES
 - G041 AMENITIES
 - G042 CLEANING
 - G043 ISSUES/PACKING
 - G044 CORRIDOR
 - G045 SECURE STORE
 - G046 CORRIDOR
 - G047 CES
 - G048 CORRIDOR
 - G049 CCI
 - G050 SERVER
 - G051 PREP. ROOM
 - G052 VEHICLE FITTING
 - G053 COMMS.
 - G054 ARMOURERS WORKSHOP
 - G055 AMENITIES
 - G056 ELEC CUPBOARD
 - G057 A/C ENCLOSURE
 - G058 A/C ENCLOSURE



Attachment 54
No 1 and No 2 Air Field Defence Squadrons Support Flight Communications and Armoury Floor Plan

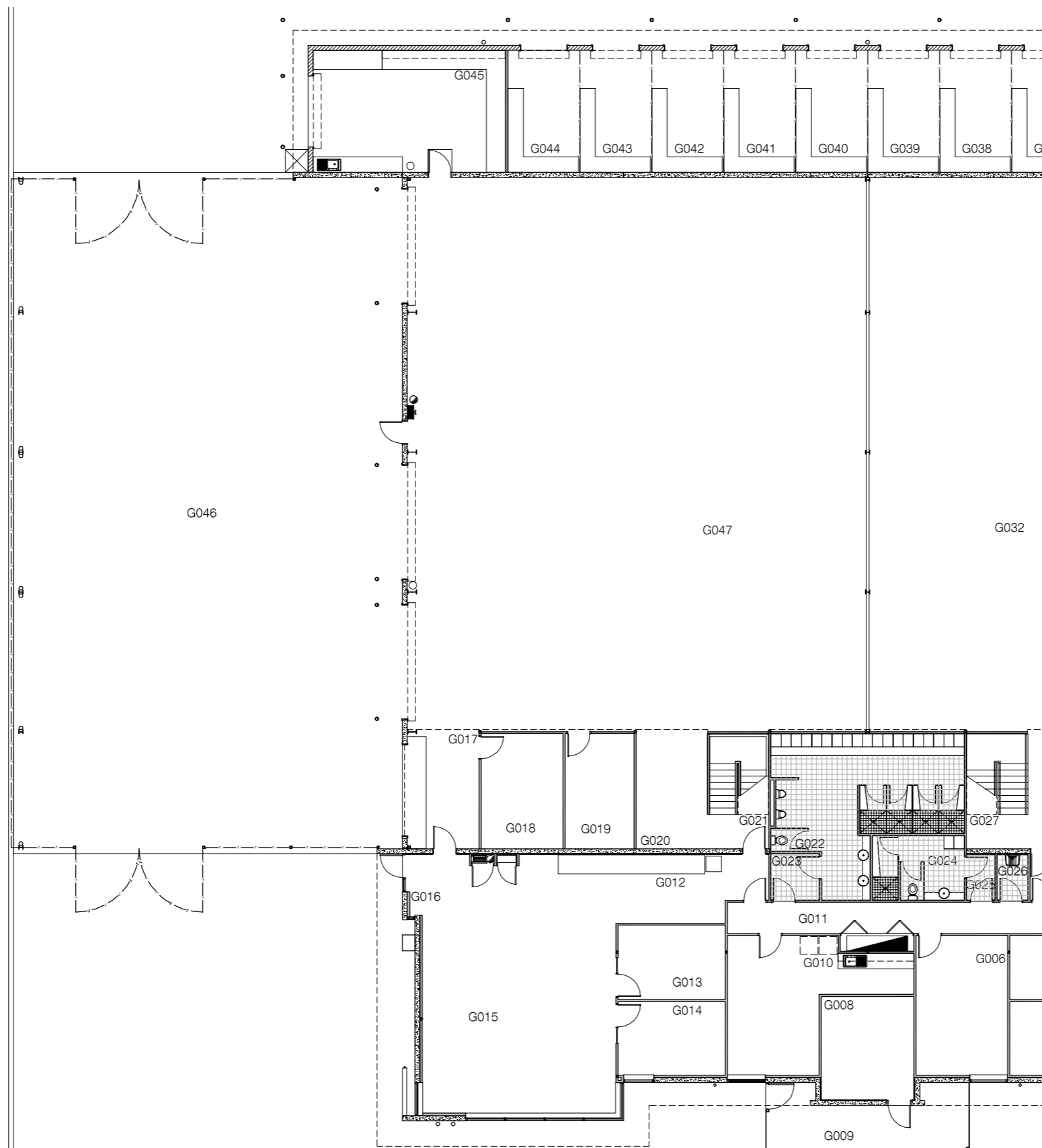


LEGEND

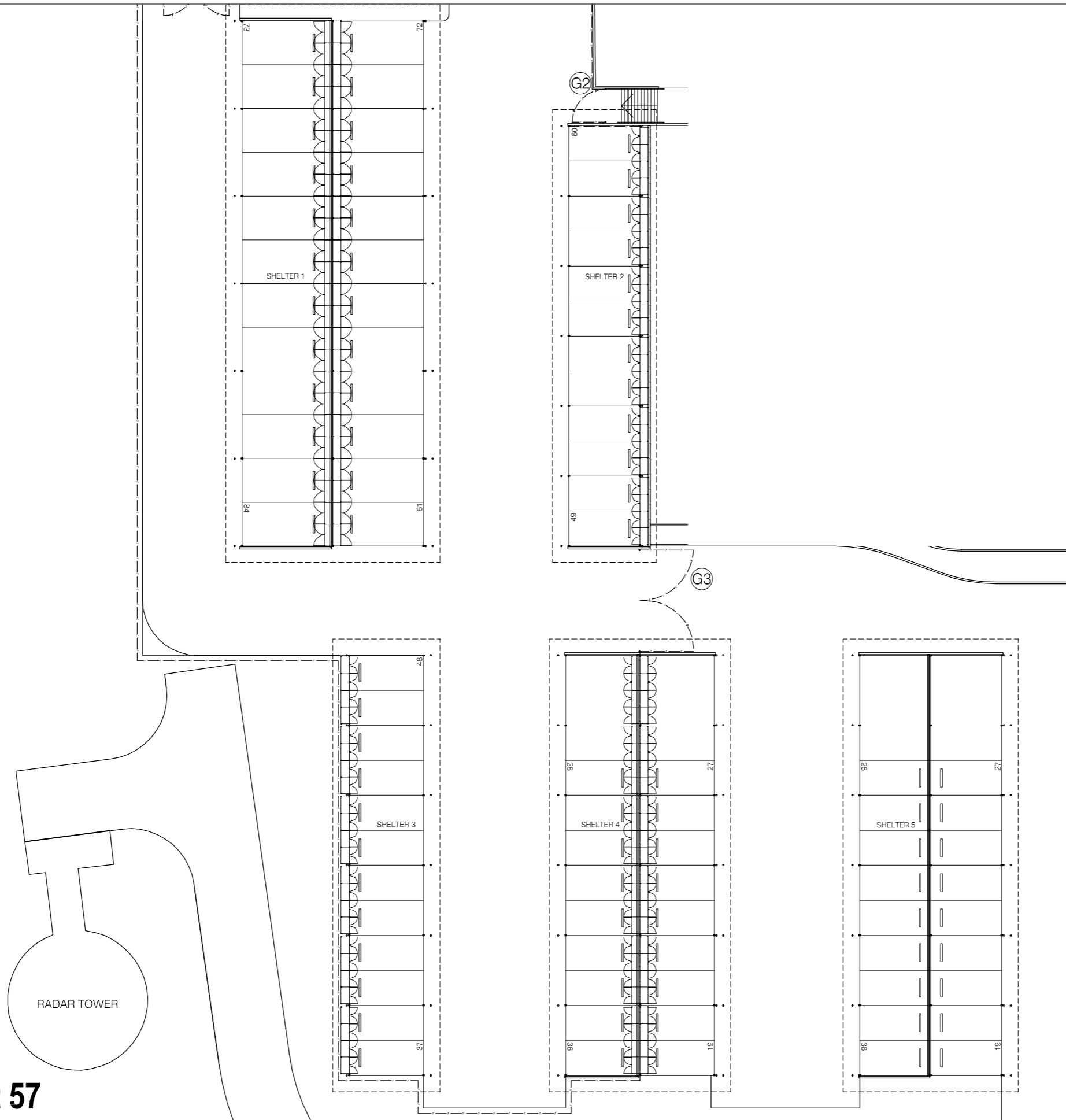
| | |
|------|------------------------|
| G001 | ENTRY |
| G002 | OPEN OFFICE AREA |
| G003 | ASSAULT PIONEER OFFICE |
| G004 | READY DEP. OFFICE |
| G005 | UTILITY / STORE |
| G006 | MEETING |
| G007 | PWD AMENITIES |
| G008 | COMMS |
| G009 | EXTERNAL A/C PLANT |
| G010 | BREW |
| G011 | CORRIDOR |
| G012 | UTILITY / STORE |
| G013 | READY DEP. OFFICE |
| G014 | ASSAULT PIONEER OFFICE |
| G015 | OPEN OFFICE AREA |
| G016 | ENTRY |
| G017 | ISSUES |
| G018 | SECURE STORE |
| G019 | STATIONARY |
| G020 | COMPACTUS |
| G021 | STAIR 1 |
| G022 | MALE AMENITIES |
| G023 | MALE AIR LOCK |
| G024 | FEMALE AMENITIES |
| G025 | FEMALE AIR LOCK |
| G026 | CLEANER |
| G027 | STAIR 2 |
| G028 | COMPACTUS |
| G029 | STATIONARY |
| G030 | SECURE STORE |
| G031 | ISSUES |
| G032 | RACKING AND STORAGE |
| G033 | EXTERNAL FENCED AREA |
| G034 | ASSAULT PIONEERS |
| G035 | STORE |
| G036 | STORE |
| G037 | STORE |
| G038 | STORE |
| G039 | STORE |
| G040 | STORE |
| G041 | STORE |
| G042 | STORE |
| G043 | STORE |
| G044 | STORE |
| G045 | ASSAULT PIONEERS |
| G046 | EXTERNAL FENCED AREA |
| G047 | RACKING AND STORAGE |

Attachment 55
No 1 and No 2 Air Field Defence Squadrons Support Flight Ready Deployment Assault Pioneers Floor Plan (East)

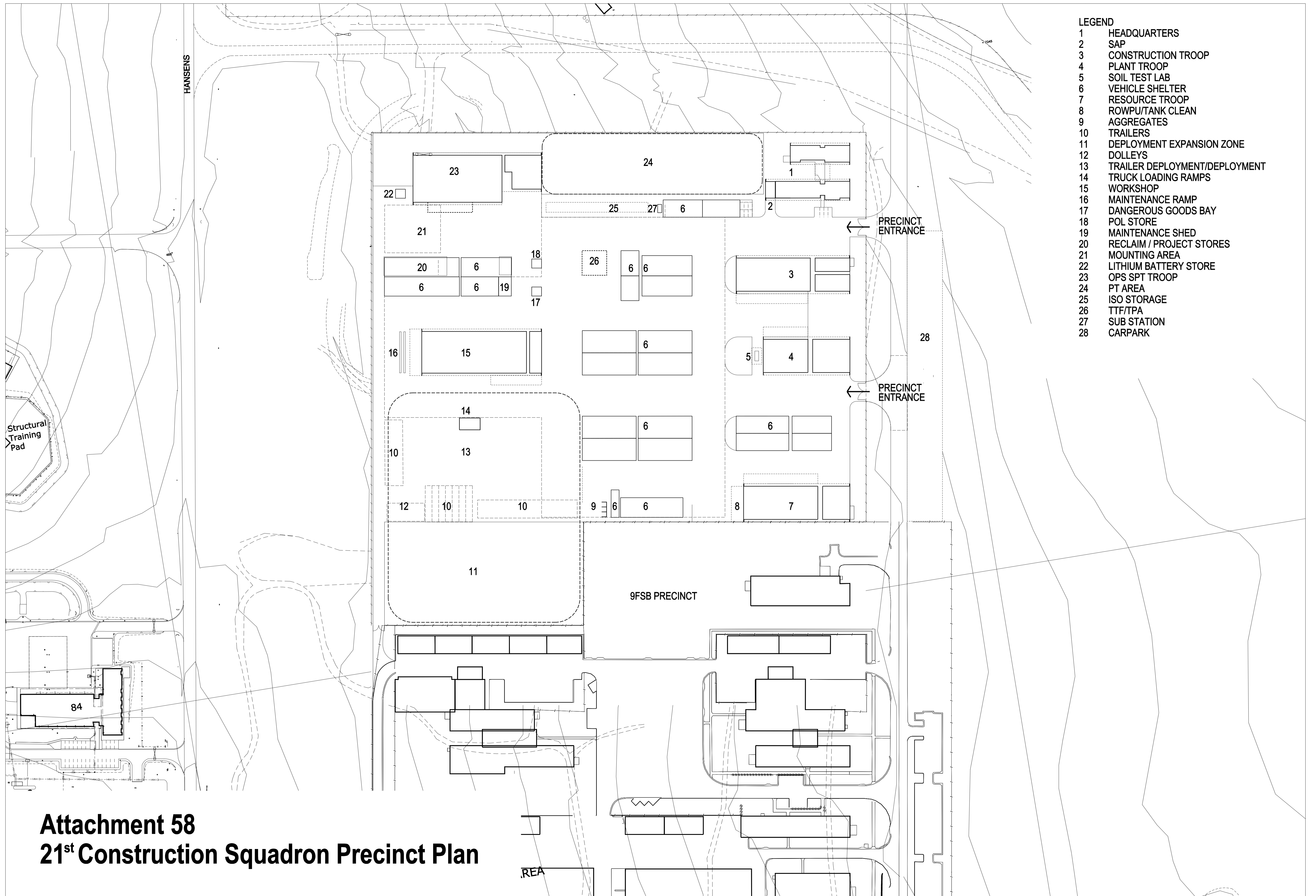
| LEGEND | |
|--------|------------------------|
| G001 | ENTRY |
| G002 | OPEN OFFICE AREA |
| G003 | ASSAULT PIONEER OFFICE |
| G004 | READY DEP. OFFICE |
| G005 | UTILITY / STORE |
| G006 | MEETING |
| G007 | PWD AMENITIES |
| G008 | COMMS |
| G009 | EXTERNAL A/C PLANT |
| G010 | BREW |
| G011 | CORRIDOR |
| G012 | UTILITY / STORE |
| G013 | READY DEP. OFFICE |
| G014 | ASSAULT PIONEER OFFICE |
| G015 | OPEN OFFICE AREA |
| G016 | ENTRY |
| G017 | ISSUES |
| G018 | SECURE STORE |
| G019 | STATIONARY |
| G020 | COMPACTUS |
| G021 | STAIR 1 |
| G022 | MALE AMENITIES |
| G023 | MALE AIR LOCK |
| G024 | FEMALE AMENITIES |
| G025 | FEMALE AIR LOCK |
| G026 | CLEANER |
| G027 | STAIR 2 |
| G028 | COMPACTUS |
| G029 | STATIONARY |
| G030 | SECURE STORE |
| G031 | ISSUES |
| G032 | RACKING AND STORAGE |
| G033 | EXTERNAL FENCED AREA |
| G034 | ASSAULT PIONEERS |
| G035 | STORE |
| G036 | STORE |
| G037 | STORE |
| G038 | STORE |
| G039 | STORE |
| G040 | STORE |
| G041 | STORE |
| G042 | STORE |
| G043 | STORE |
| G044 | STORE |
| G045 | ASSAULT PIONEERS |
| G046 | EXTERNAL FENCED AREA |
| G047 | RACKING AND STORAGE |



**Attachment 56
No 1 and No 2 Air Field Defence Squadrons Support Flight Ready Deployment Assault Pioneers Floor Plan (West)**



Attachment 57
No 1 and No 2 Air Field Defence Squadrons Vehicle Shelters Plan



Attachment 58
21st Construction Squadron Precinct Plan

LEGEND

- 01 COMMS
- 02 DP1 STORE
- 03 MALE WC/LOCKER
- 04 CLEANER'S
- 05 WKS OFFICE
- 06 REF LIBRARY
- 07 CONST OFFICER
- 08 WKS OFFICE
- 09 DOCUM STORE
- 10 PRINT ROOM
- 11 WM
- 12 FOYER
- 13 BREW
- 14 FEMALE WC/LOCKERS
- 15 PWD
- 16 HWU
- 17 PLANT
- 18 MSB
- 19 TREATMENT
- 20 MEDICAL STORE
- 21 COMMS
- 22 ARCHIVE
- 23 REGISTRY/ORDERLY
- 24 FOYER
- 25 DUTY ROOM
- 26 DORM
- 27 DORM
- 28 21C
- 29 OC
- 30 SSM
- 31 OPS WO
- 32 CONFERENCE
- 33 BREW
- 34 CCLK
- 35 UPR
- 36 FIN SGT
- 37 STAT STORE
- 38 PLANT
- 39 BREW
- 40 PWD
- 41 MEDICAL CORPORAL
- 42 WAITING



Attachment 59
21st Construction Squadron Headquarters Floor Plan

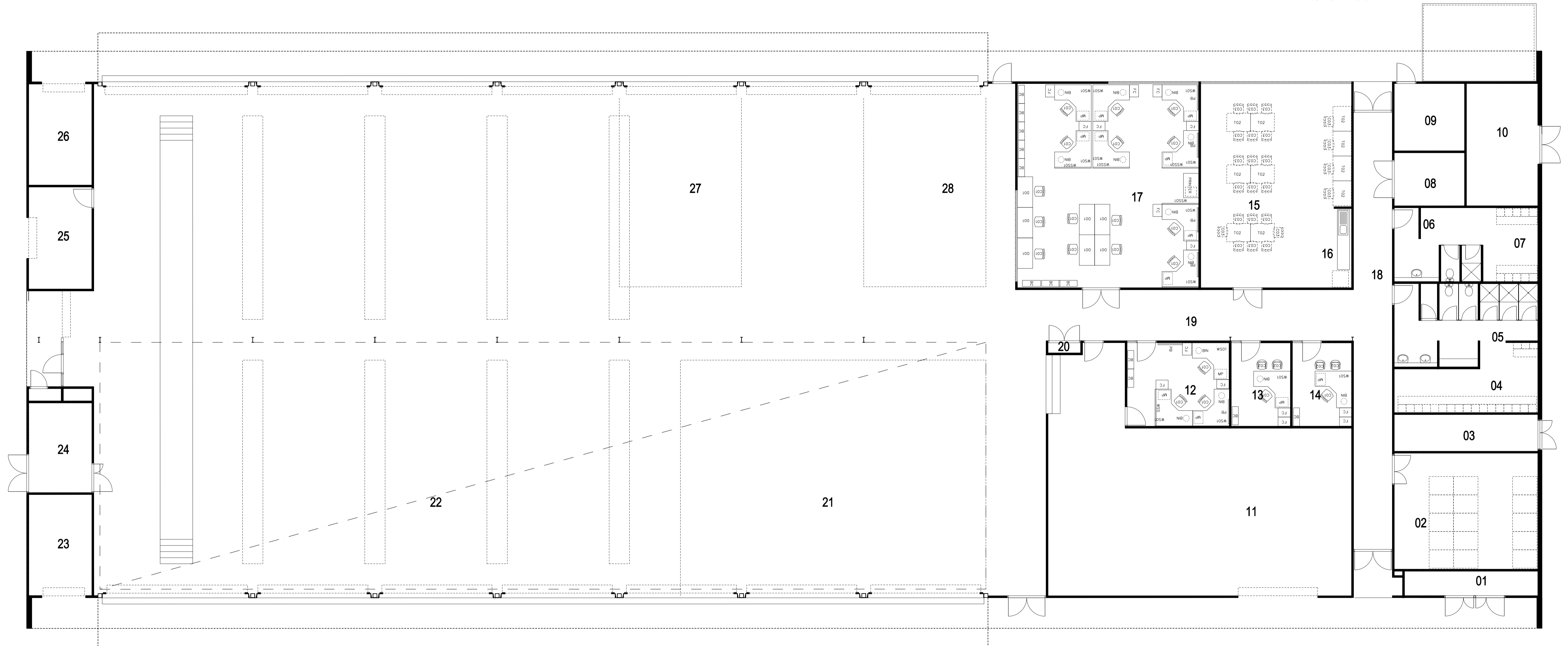


- LEGEND**
- 01 FEMALE SAL
 - 02 FEMALE LOCKERS
 - 03 HW
 - 04 MALE SAL
 - 05 MALE LOCKERS
 - 06 DP1 STORE
 - 07 COMMS
 - 08 CBT STM SGMS & PAY CLK
 - 09 CATERING OFFICE
 - 10 CBT STM
 - 11 AQM
 - 12 COMD QM
 - 13 BRIEFING ROOM
 - 14 MSB
 - 15 PLANT
 - 16 SECURE STORE
 - 17 INSPECT
 - 18 ISSUE
 - 19 COVERED AREA
 - 20 BREEZEWAY
 - 21 BREEZEWAY
 - 22 CLOTHING ISSUE
 - 23 CLOTHING STORE
 - 24 Q-STORE
 - 25 UNDERCOVER LOADING BAY

Attachment 60
21st Construction Squadron Operational Support Troop Facility Floor Plan

LEGEND

- | | |
|--------------------------|--------------|
| 01 GAS STORE | 16 BREW |
| 02 DP1 | 17 OFFICE |
| 03 HWU | 18 BREEZEWAY |
| 04 MALE LOCKERS | 19 BREEZEWAY |
| 05 MALE SALS | 20 EDB |
| 06 FEMALE SALS | 21 GE WKSP |
| 07 FEMALE LOCKERS | 22 VEH WKSP |
| 08 MSB | 23 COMP |
| 09 COMMS | 24 BATT |
| 10 PLANT | 25 WASTE |
| 11 RPS STORE | 26 POL |
| 12 RPS OFFICE | 27 RECOVERY |
| 13 COMD | 28 WELDING |
| 14 ART MECH | |
| 15 BRIEFING / LUNCH ROOM | |



Attachment 61
21st Construction Squadron Workshop Floor Plan

LEGEND

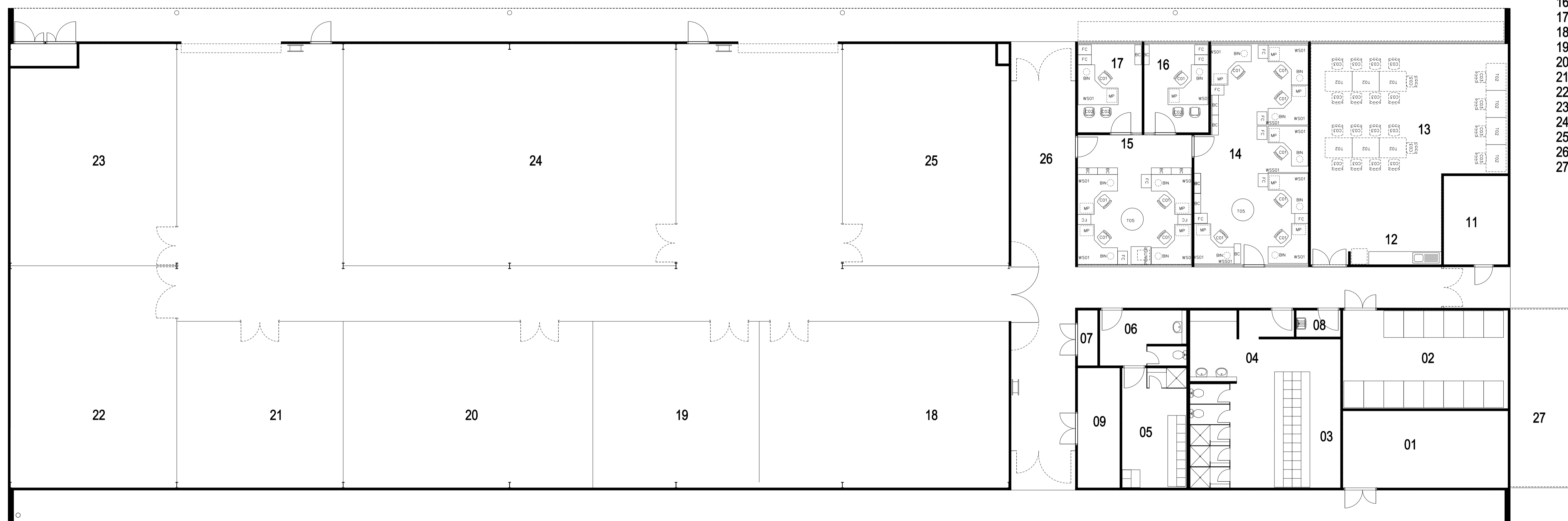
- 01 BRIEF
- 02 PLANNING
- 03 COMD
- 04 SPV CONST
- 05 OFFICE
- 06 HWU
- 07 PLANT ROOM
- 08 FEMALE
- 09 MALE SALS
- 10 FEMALE SALS
- 11 MSB
- 12 COMMS
- 13 ELEC STORE
- 14 PLUMBER STORE
- 15 CARPENTER'S STORE
- 16 ELECTRICS' BAY
- 17 PLUMBERS' BAY
- 18 CARPENTERS' BAY
- 19 TRADE WORKSHOP
- 20 STORE
- 21 STORE
- 22 Q REP
- 23 BREEZEWAY
- 24 BREEZEWAY
- 25 AIRLOCK



Attachment 62
21st Construction Squadron Construction Troop Facility Floor Plan

LEGEND

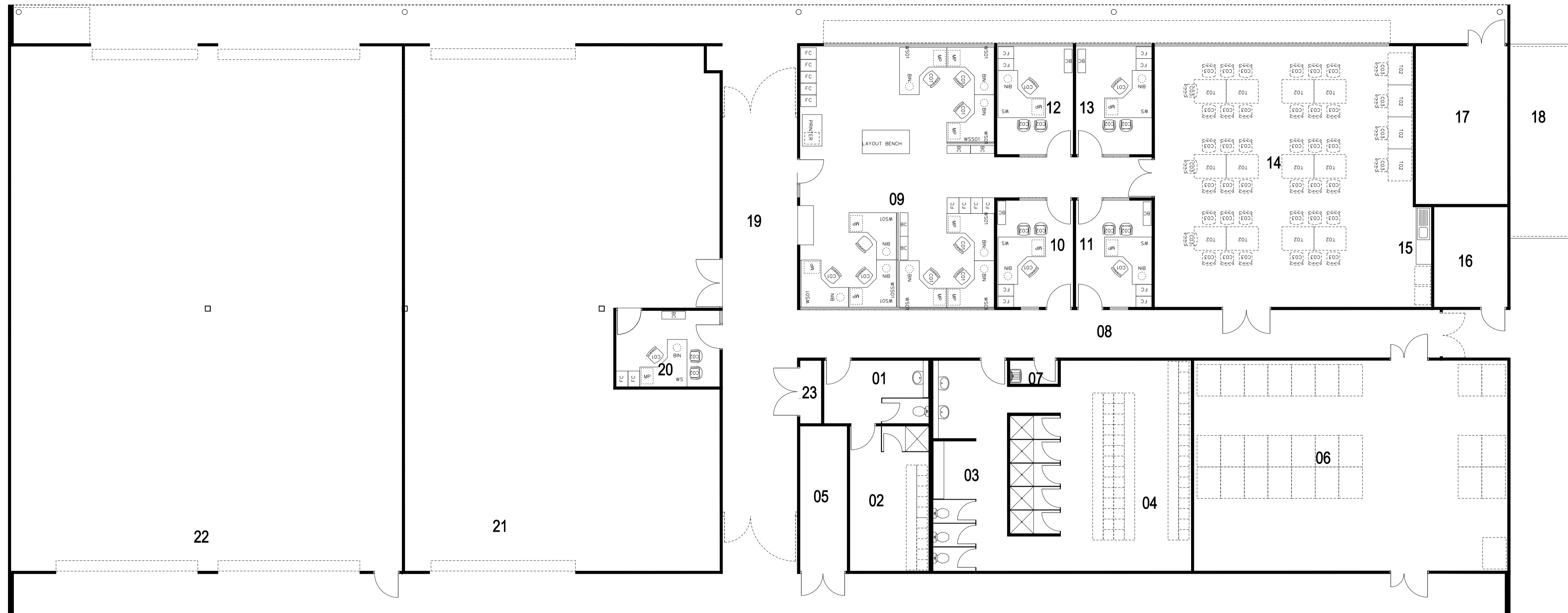
- 01 PLANT
- 02 DP1 STORE
- 03 MALE LOCKERS
- 04 MALE SALS
- 05 FEMALE LOCKERS
- 06 FEMALE SALS
- 07 MSB
- 08 CLEANERS
- 09 HWU
- 10 BREEZEWAY
- 11 COMMS
- 12 BREW
- 13 BRIEFING / LUNCH
- 14 OFFICE
- 15 OFFICE
- 16 COMD
- 17 SPV ENGR
- 18 ELEC STORE
- 19 PLBR STORE
- 20 SECTION 4
- 21 SECTION 3
- 22 SECTION 2
- 23 SECTION 1
- 24 Tp Q STORE
- 25 WATER
- 26 BREEZEWAY
- 27 CONDENSERS



Attachment 63
21st Construction Squadron Resources Troop Facility Floor Plan

LEGEND

- 01 FEMALE SALS
- 02 FEMALE LOCKERS
- 03 MALE SALS
- 04 MALE LOCKERS
- 05 HWU
- 06 DPI STORE
- 07 CLEANERS' CUPBOARD
- 08 BREEZEWAY
- 09 OFFICE
- 10 21C
- 11 PLT COMD
- 12 TP SGT
- 13 PLT SGT
- 14 BRIEF / LUNCH ROOM
- 15 BREW
- 16 COMMS
- 17 PLANT
- 18 CONDENSERS
- 19 BREEZEWAY
- 20 Q REP
- 21 STORE
- 22 TYRE STORE
- 23 MSB



Attachment 64
21st Construction Squadron Plant Troop Facility Floor Plan