



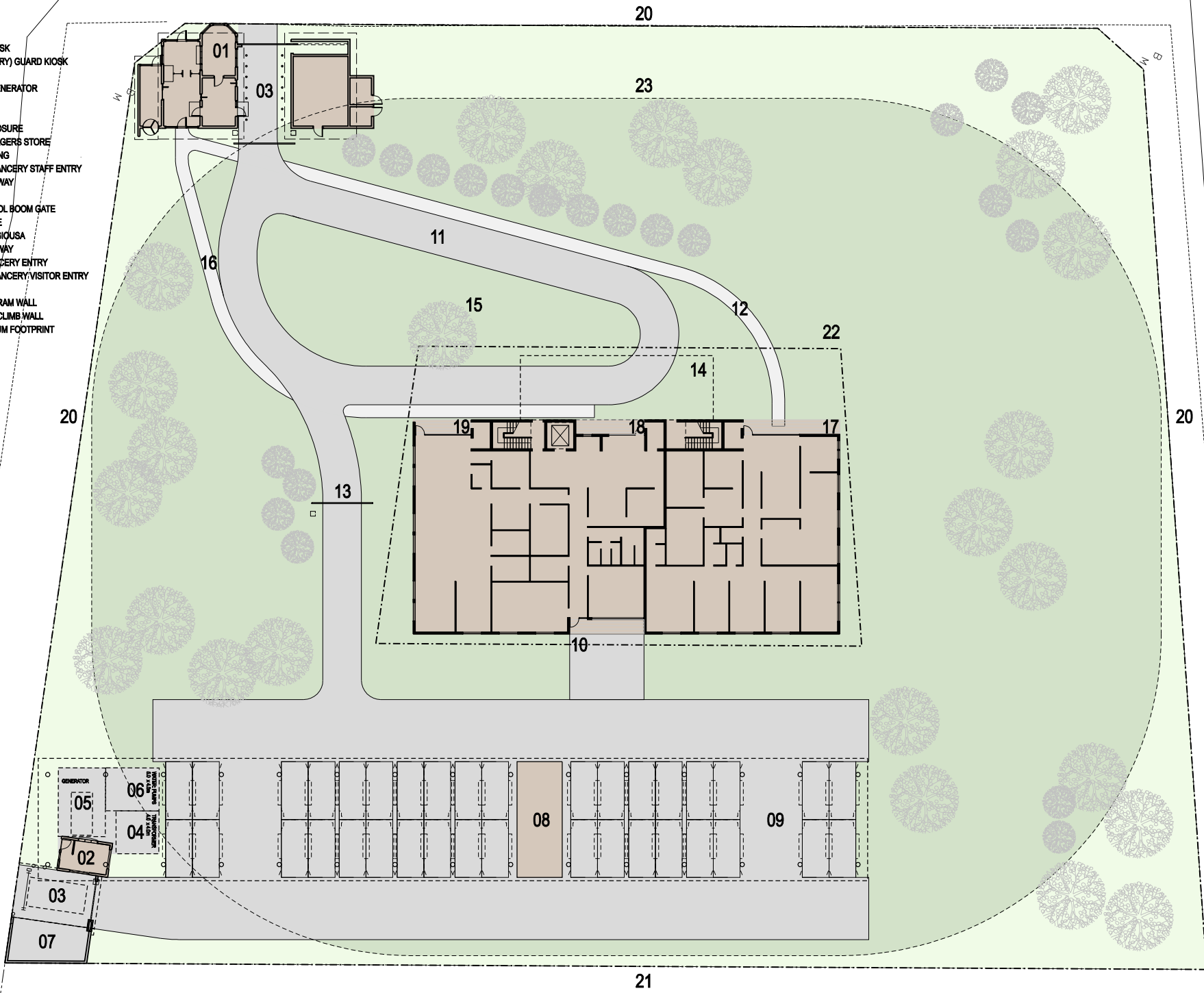
COUNTRY

LOCALITY



LEGEND

- 01 NEW MAIN GUARD KIOSK
- 02 NEW REAR (SECONDARY) GUARD KIOSK
- 03 NEW SALLY PORTE
- 04 NEW SUBSTATION / GENERATOR
- 05 NEW FUEL TANKS
- 06 NEW WATER PUMPS
- 07 NEW GARBAGE ENCLOSURE
- 08 NEW FACILITIES/MANAGERS STORE
- 09 NEW COVERED PARKING
- 10 NEW AUSTRALIAN CHANCERY STAFF ENTRY
- 11 NEW INTERNAL ROADWAY
- 12 NEW FOOT PATH
- 13 NEW VEHICLE CONTROL BOOM GATE
- 14 NEW PORTE COCHERE
- 15 EXISTING FIGUS RELIGIOSA
- 16 NEW COVERED WALKWAY
- 17 NEW CANADIAN CHANCERY ENTRY
- 18 NEW AUSTRALIAN CHANCERY VISITOR ENTRY
- 19 NEW DIMIA ENTRY
- 20 NEW 2.7 m HIGH ANTI RAM WALL
- 21 NEW 2.7 m HIGH ANTI CLIMB WALL
- 22 THEORETICAL MAXIMUM FOOTPRINT
- 23 30 m SETBACK ZONE



CONSTRUCTION OF NEW AUSTRALIAN CHANCERY
PHNOM PENH SITE PLAN

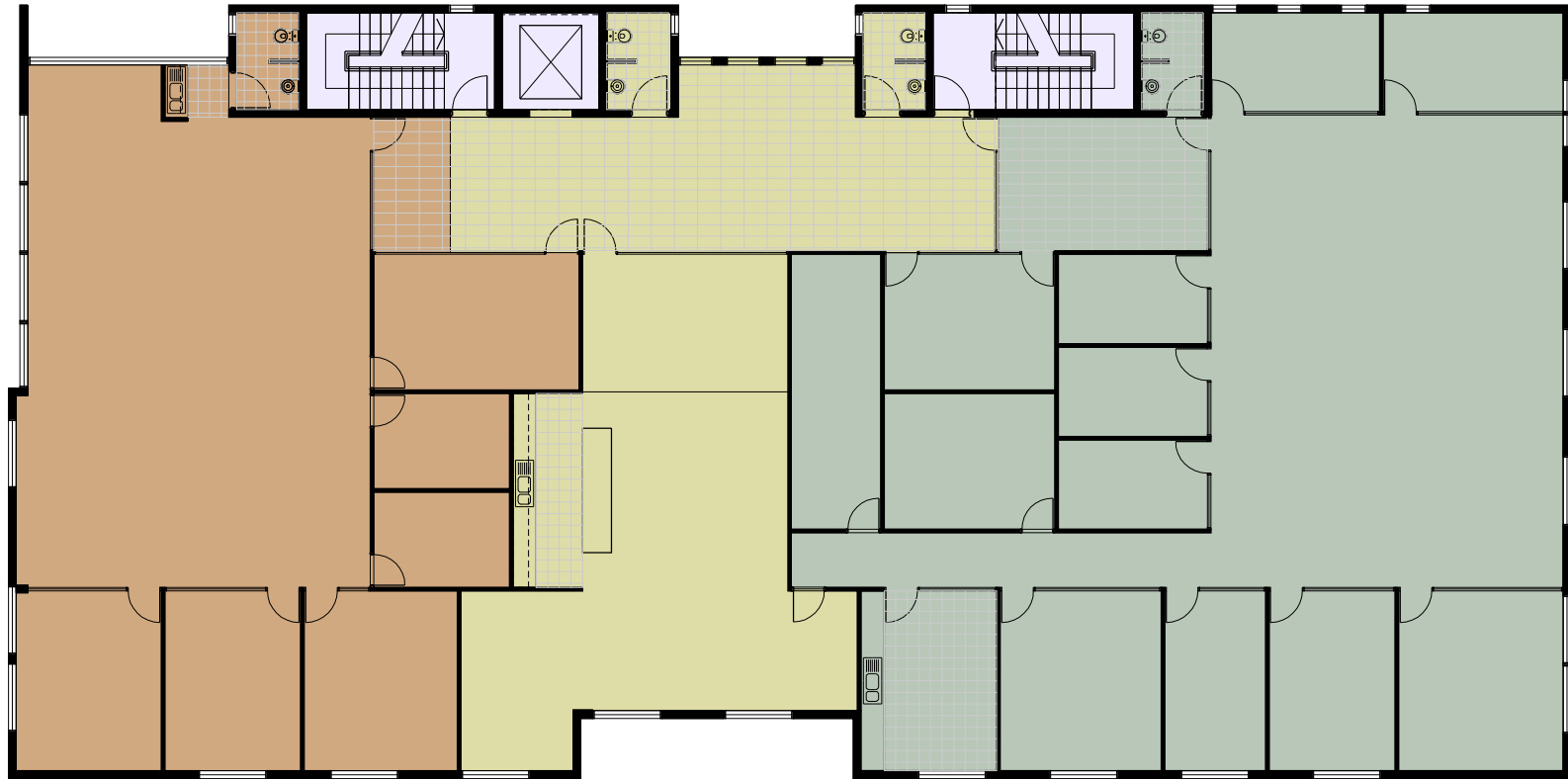
SCALE 1:500 @A4

00 05 10 20 50 75m

- AusAID
- AFP
- Defence
- DFAT
- DIMIA
- Canadian Embassy
- Shared Areas
- Service Areas
- Facilities Management



- AusAID
- AFP
- Defence
- DFAT
- DIMIA
- Canadian Embassy
- Shared Areas
- Service Areas
- Facilities Management



- AusAID
- AFP
- Defence
- DFAT
- DIMIA
- Canadian Embassy
- Shared Areas
- Service Areas
- Facilities Management





CONSTRUCTION OF NEW AUSTRALIAN CHANCERY
PHNOM PENH INDICATIVE PERSPECTIVE

NOT TO SCALE