



Australian War Memorial

AUSTRALIAN WAR MEMORIAL

Eastern Precinct Development and National Service Memorial

**SUPPLEMENTARY SUBMISSION TO THE PARLIAMENTARY
STANDING COMMITTEE ON PUBLIC WORKS**

October 2008



INTRODUCTION

This Supplementary Submission October 2008 updates information provided to the Public Works Committee in the Statement of Evidence dated September 2008. Information is presented under the same item numbers used in the September report.

Description of proposal

19 **Underground car parking** – The current car park design concept allows space for 191 cars including four accessible car parking spaces. This size allows further retention of established trees on the eastern edge of the car park footprint. Access to the underground car park is still from the east access road off Fairbairn Avenue however the access has been shifted further east and enters the underground car park from the eastern side. This design change responds to heritage and aesthetic concerns raised in regard to the car park entry prominence in the main vista. The design change also allows egress to service deliveries and less intrusive café rubbish collection and storage arrangements. The significant and intrusive road infrastructure to service the café, previously shown in the north of the precinct, has been deleted.

20 **Coach parking** – After liaison and consultation with the project traffic consultants, the architect, local residents, coach drivers and school representatives the coach parking concept design has been refined. To safely accommodate loading and unloading passengers, improve sighting and screening in the landscape (and maintain ‘wildlife corridors’ to the site), and reduce expenditure by removal of the need to cover the existing open stormwater channel, the size of the coach park has been reduced to eight vehicles. The vehicle egress and parking alignment has also been refined. The size reduction (and new alignment) still provides increased capacity on the existing and meets the demand for coach parking space.

Environmental impact assessments

33 The Australian War Memorial lies at the upstream end of the overall catchment. There is an open channel located on the north-east of the site and runs across to the east and under Fairbairn Avenue. It is no longer proposed to part cover the channel to allow for coach parking.

TECHNICAL INFORMATION

Site Works

58 Stormwater Channel

It is no longer proposed to part cover the stormwater channel located on the north-east of the site for the new coach parking area.

Materials and Finishes

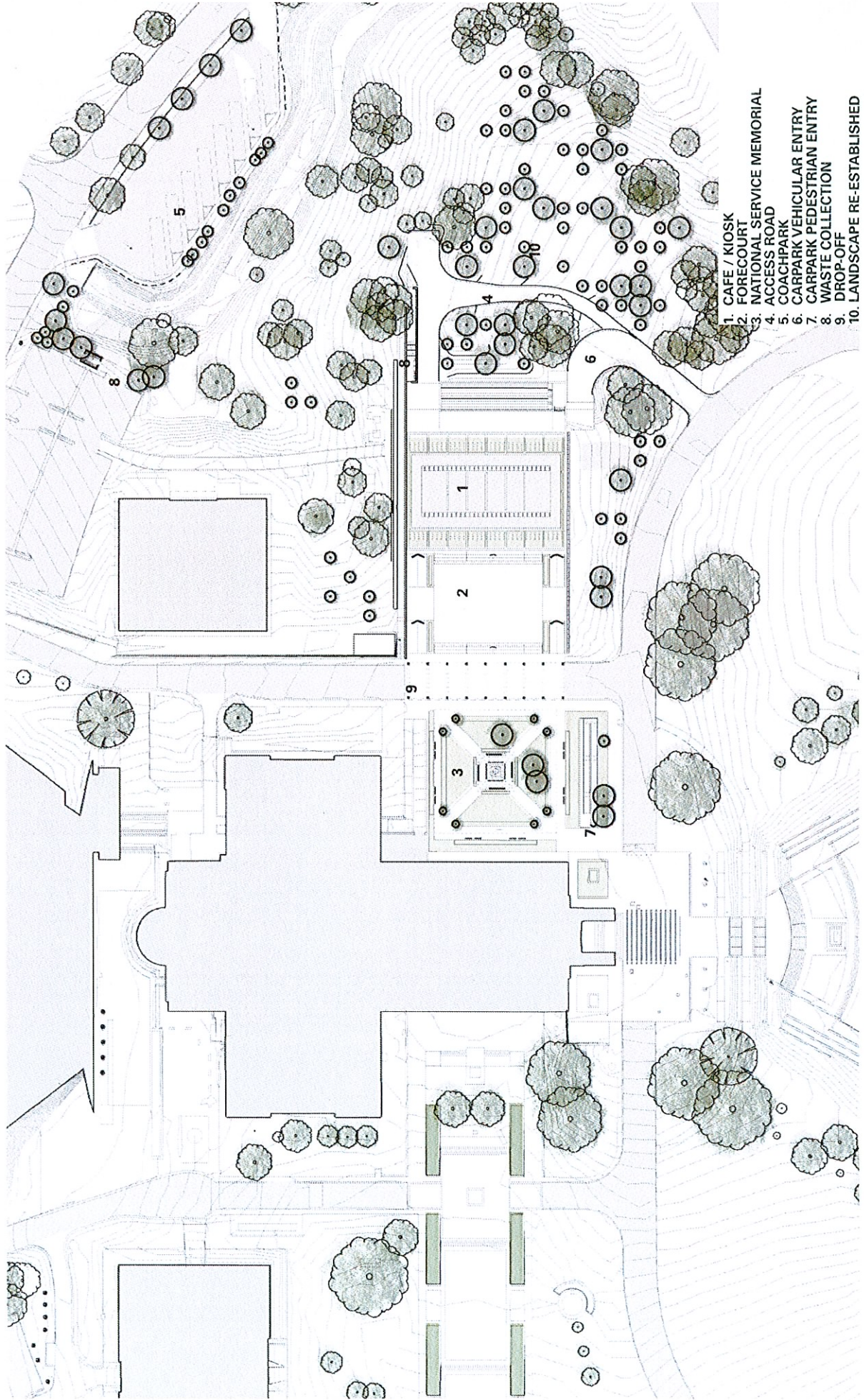
65 Coach Parking and Service Road.

The service road from the coach park has been deleted. The service arrangement for the new café has been relocated to the south to be less intrusive in the landscape. The garbage enclosure in the north of the site (servicing the CEW Bean and ANZAC Hall buildings) will remain but be discretely located next to the existing CEW Bean building car park.

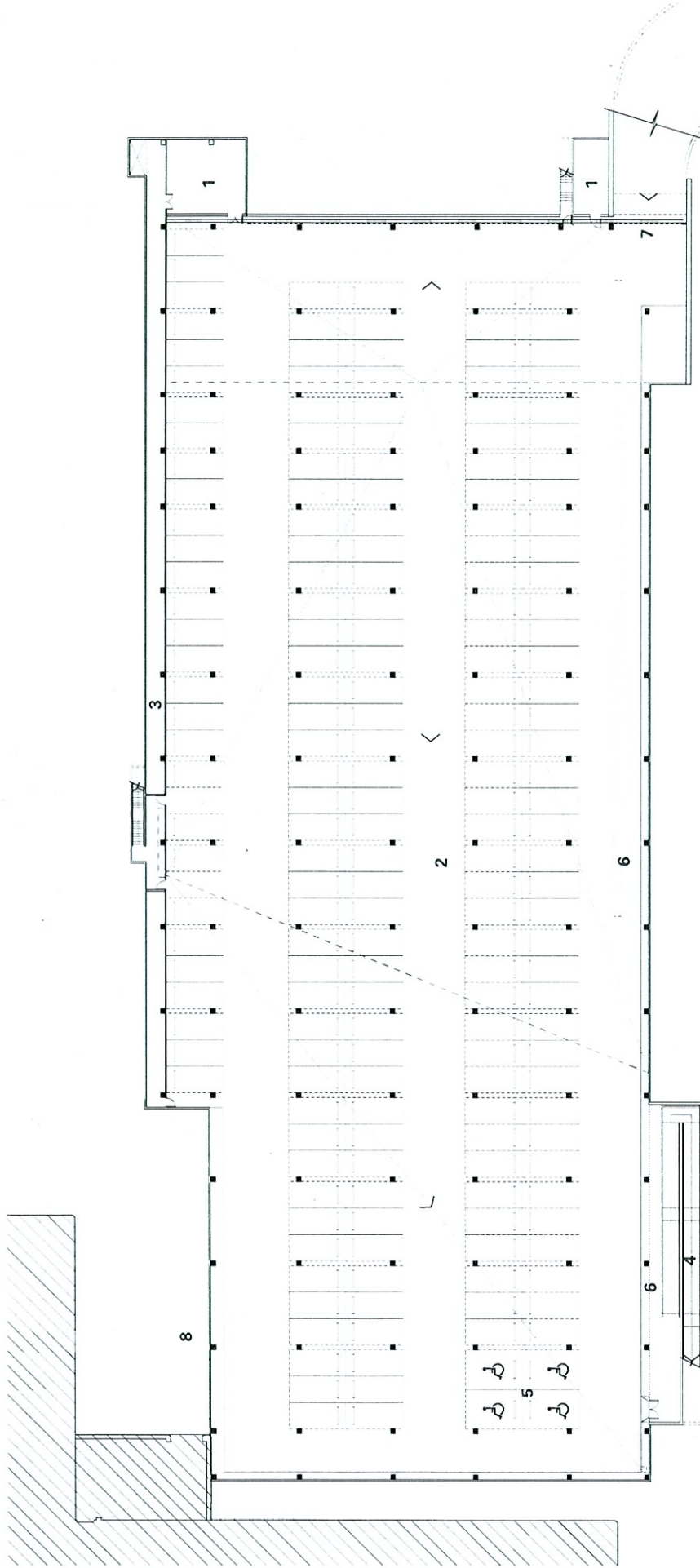
PLANS AND DRAWINGS

- Proposed Site Plan (revised – new arrangement for access road and vehicle entry)
- Basement Plan (revised – new arrangement for vehicle entry)
- Ground Floor Plan (revised – new arrangement for vehicle entry)
- Roof Plan (revised – new arrangement for vehicle entry)
- Elevations (revised – new arrangement for vehicle entry)

Proposed Site Plan



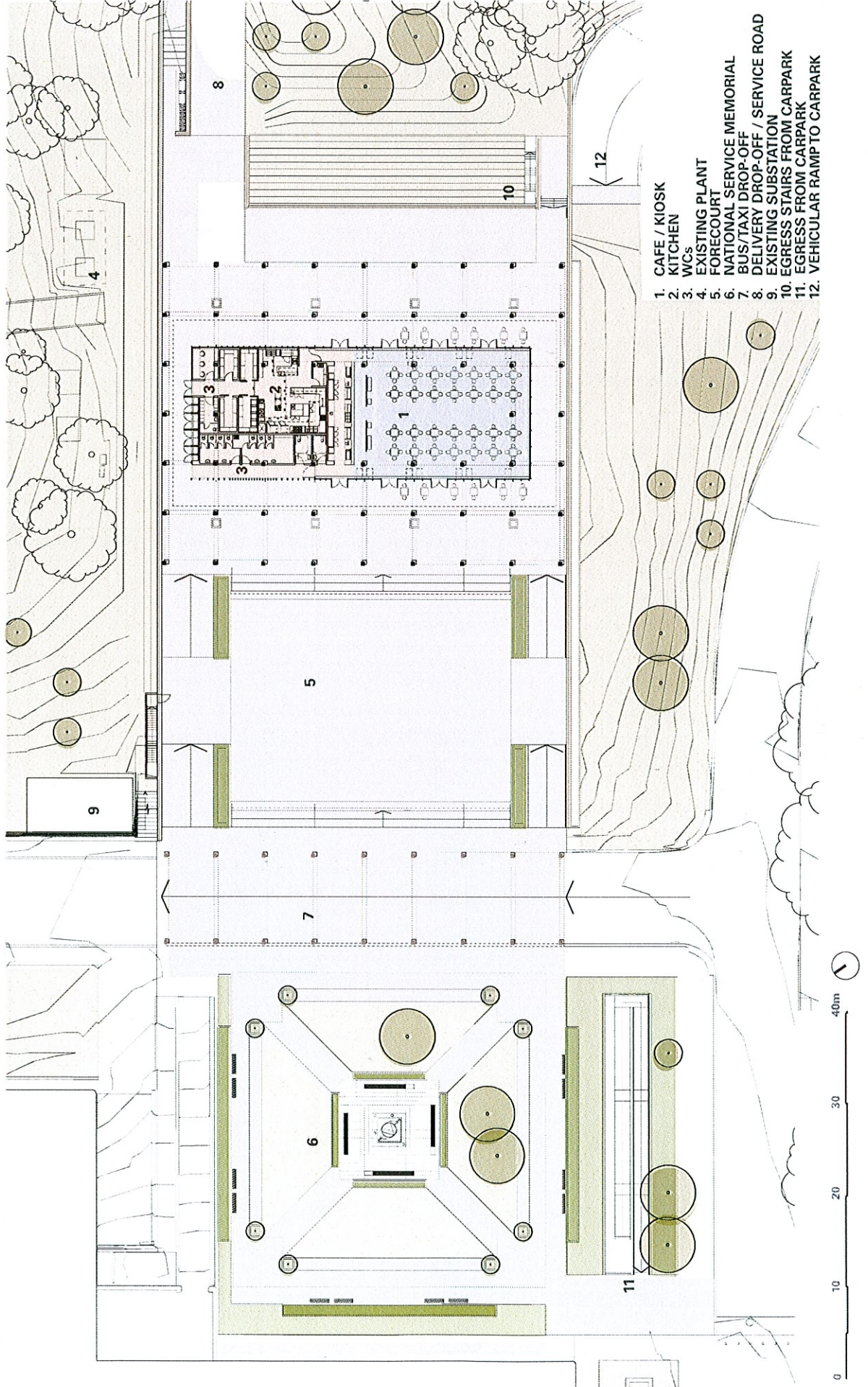
Basement Plan



- 1. PLANT
- 2. CARPARK (191 SPACES)
- 3. EXHAUST PLENUM
- 4. OPEN RAMP ACCESS TO GROUND LEVEL
- 5. ACCESSIBLE PARKING (4 NO.)
- 6. VENTILATION / LIGHT GRILL OVER RAMP (1:20)
- 7. ROLLER SHUTTER / GATE TO CARPARK
- 8. VENTILATION GRILLE

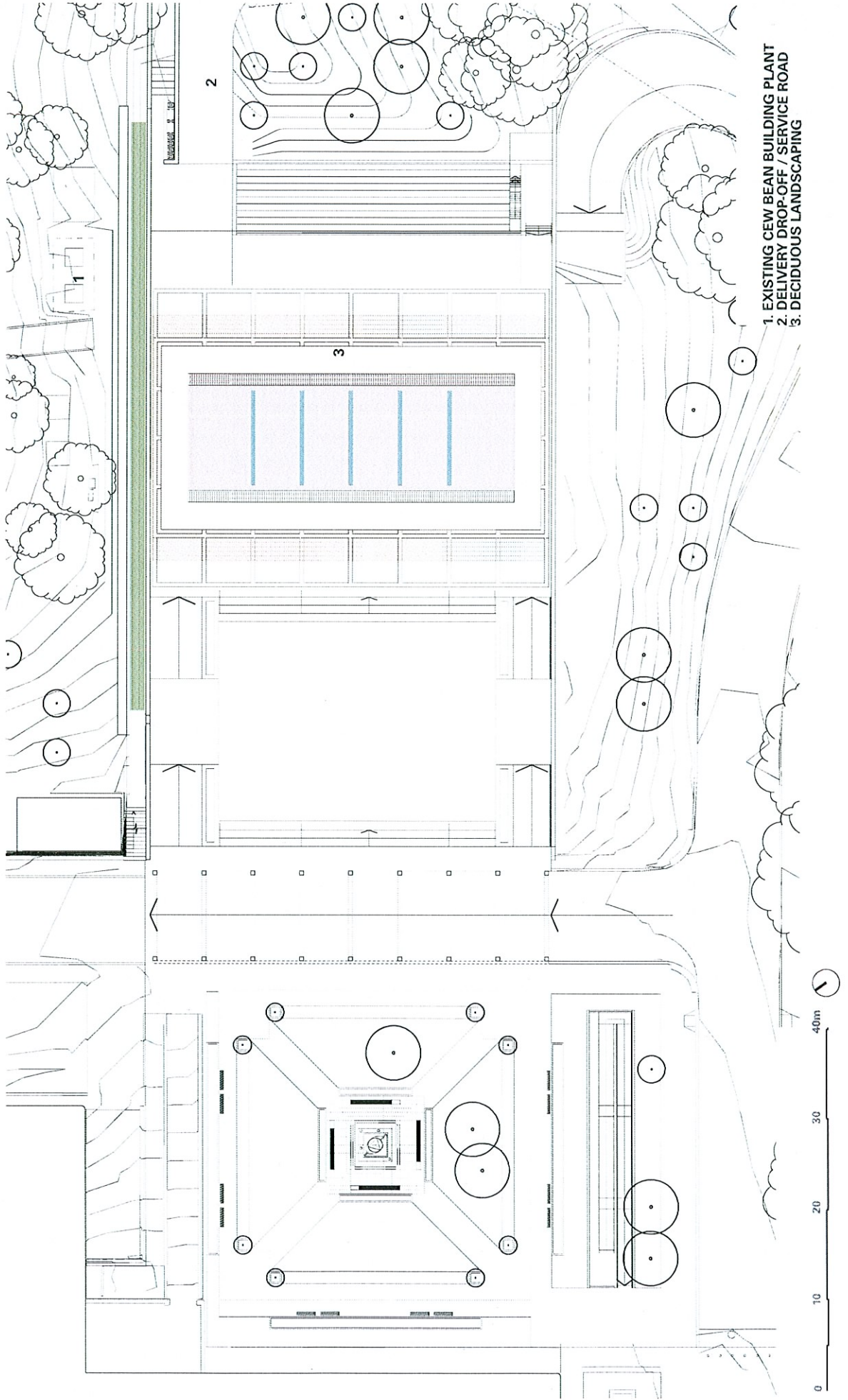


Ground Floor Plan



- 1. CAFE / KIOSK
- 2. KITCHEN
- 3. W.C.s
- 4. EXISTING PLANT
- 5. FORECOURT
- 6. NATIONAL SERVICE MEMORIAL
- 7. BUS/TAXI DROP-OFF
- 8. DELIVERY DROP-OFF / SERVICE ROAD
- 9. EXISTING SUBSTATION
- 10. EGRESS STAIRS FROM CARPARK
- 11. EGRESS FROM CARPARK
- 12. VEHICULAR RAMPTO CARPARK

Roof Plan



- 1. EXISTING CEW BEAN BUILDING PLANT
- 2. DELIVERY DROP-OFF / SERVICE ROAD
- 3. DECIDUOUS LANDSCAPING

Elevations

