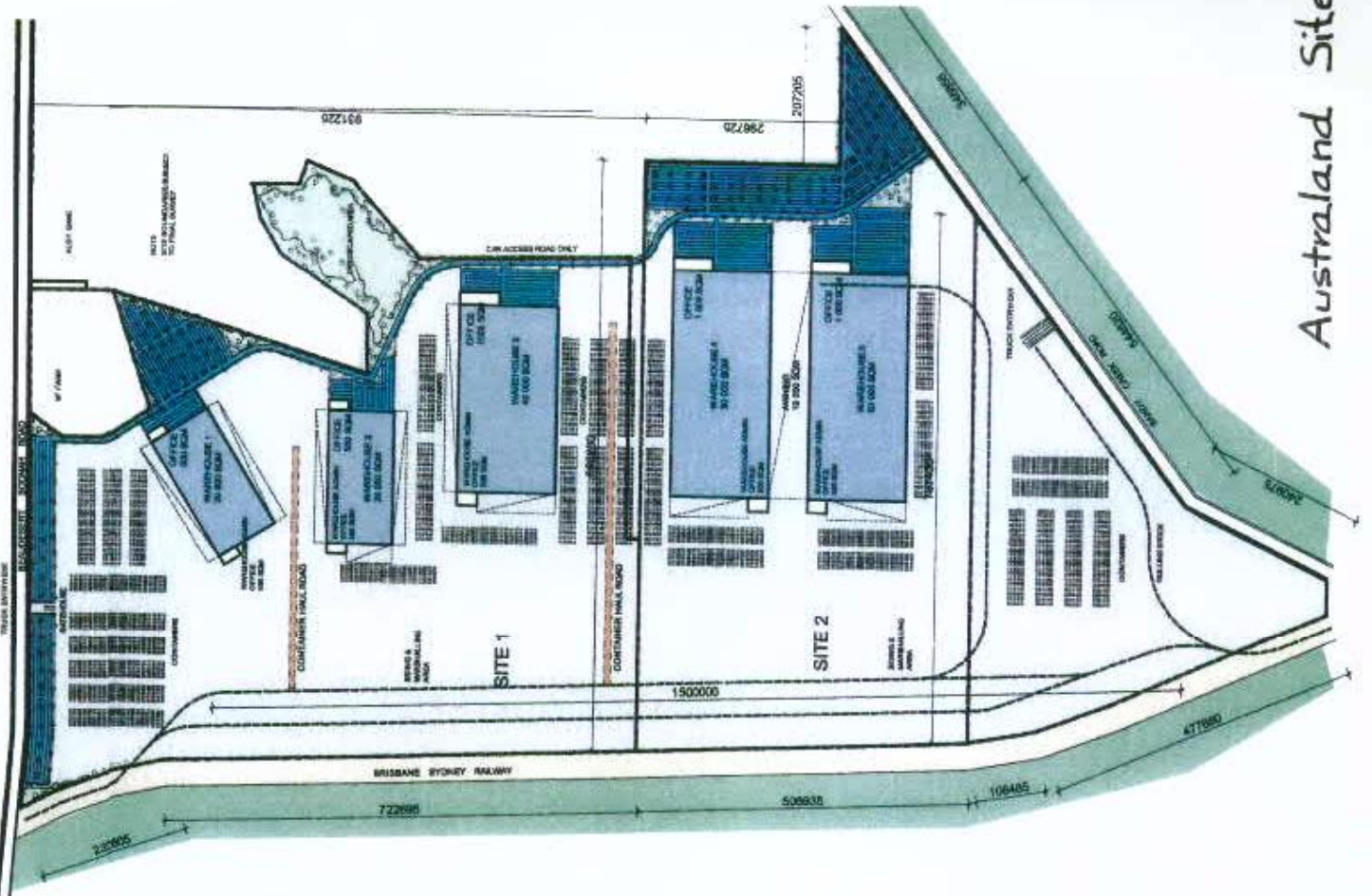
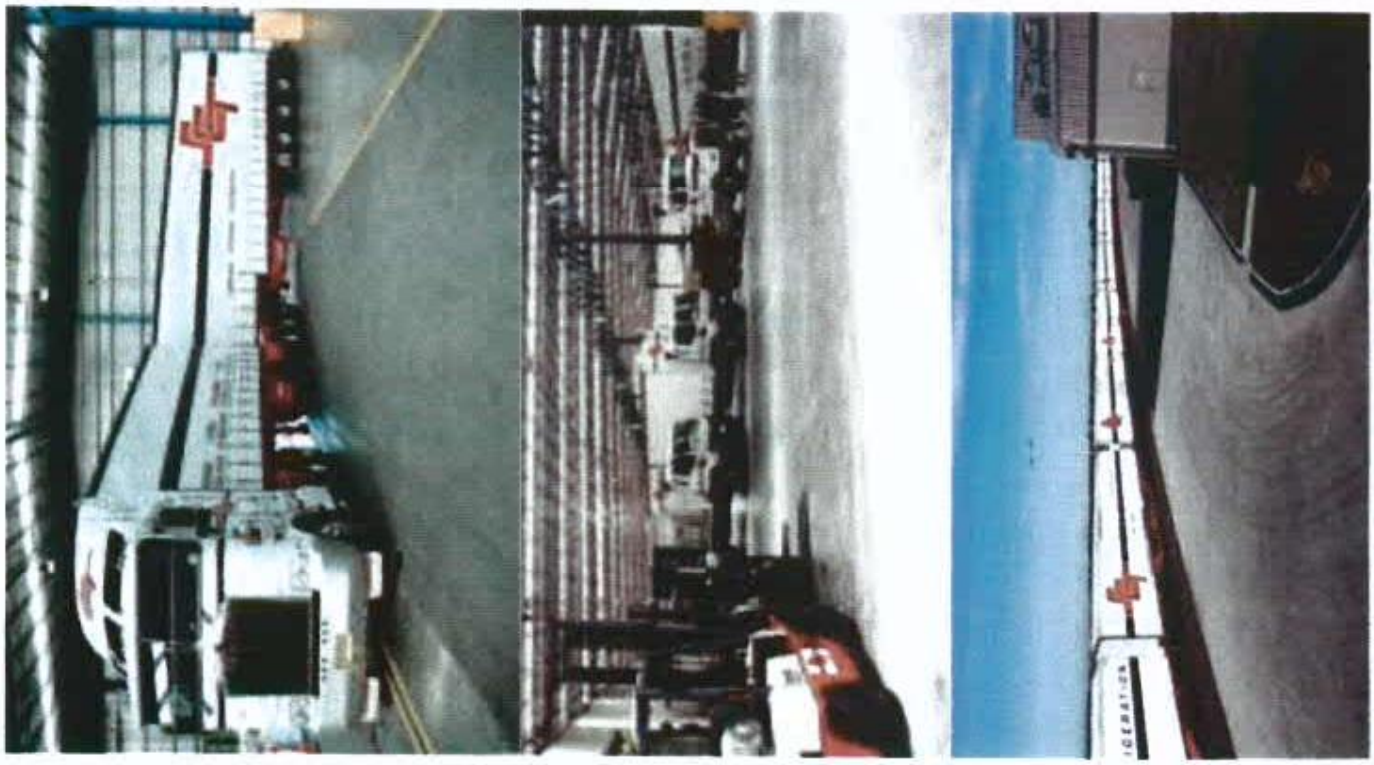
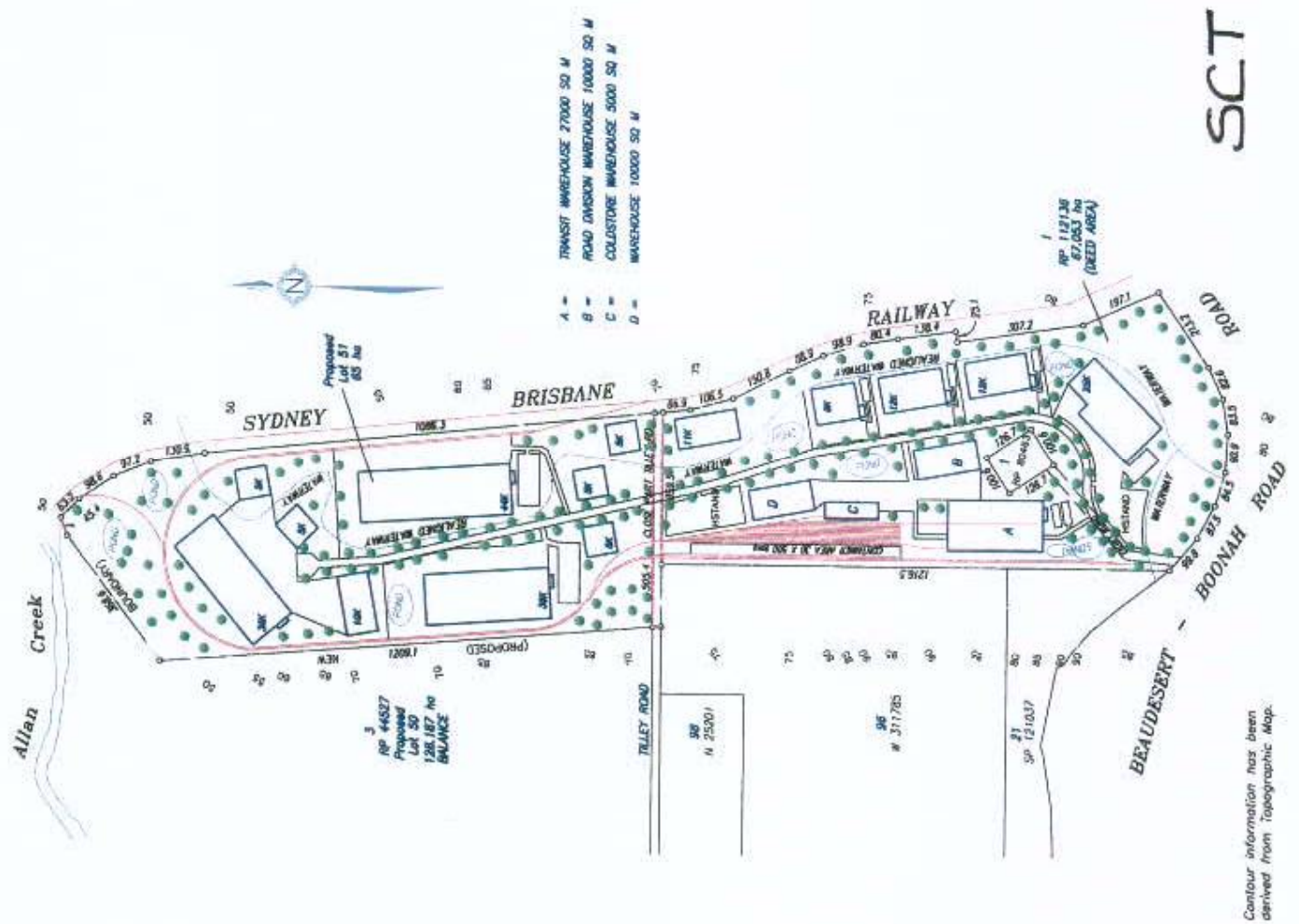


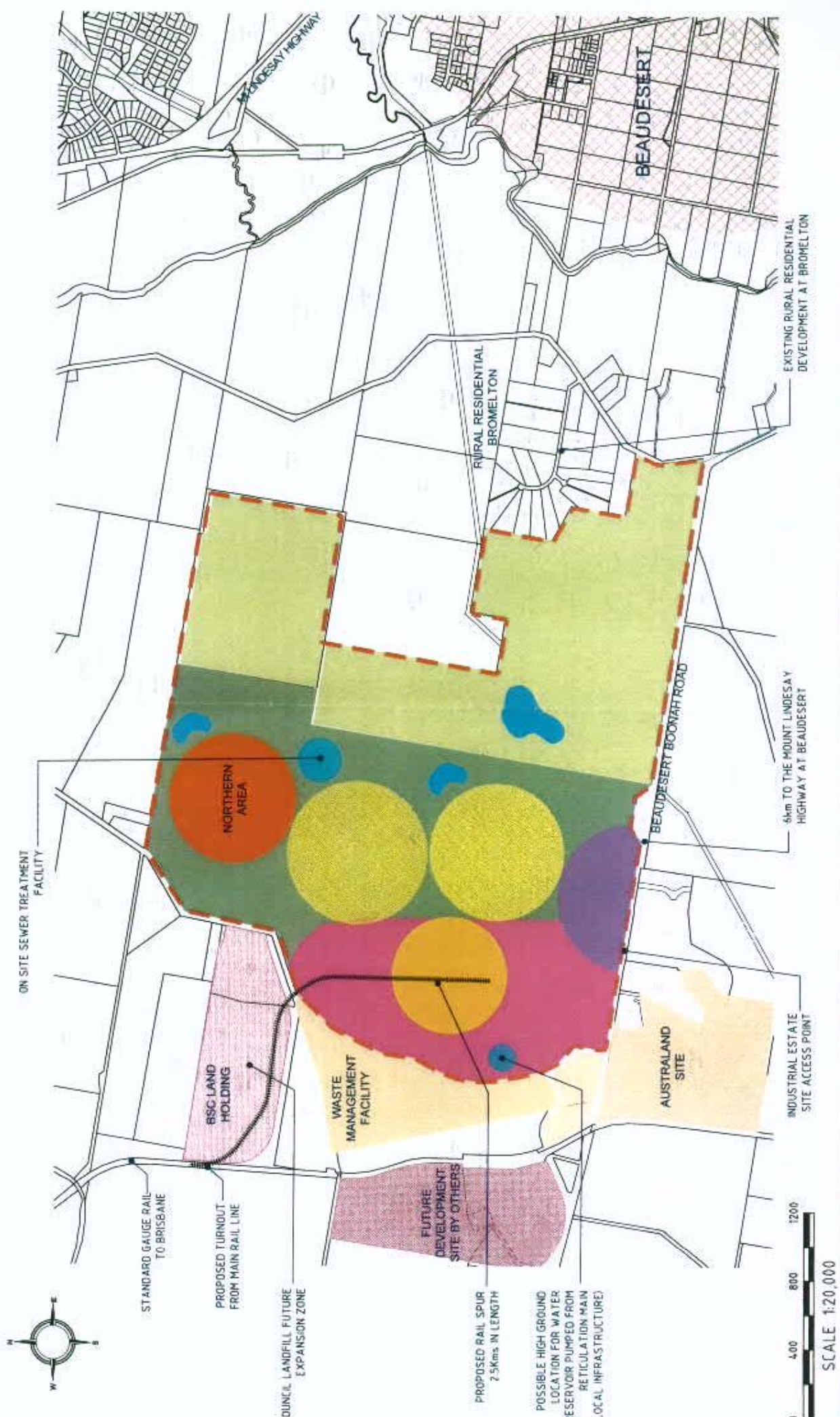


Current Proposals

Australand Site







- NOTES:**
1. Base cadastral information from Department of Natural Resources DCIB July 2005
 2. Base watercourse and contour information extracted from Department of Natural Resources QLD
 3. Methods of data collection noted above are approximate only. Typically scale distortions and generally inaccuracies result from this form of data collection.
 4. Concept detailed herein is conceptual only and is subject to detailed survey, investigations and design. It has been prepared as a base document to stimulate discussion.

BUSINESS & LOGISTICS PRECINCT	GREEN SPACE / BUFFER ZONE
RAIL DEPENDENT INDUSTRIAL PRECINCT	SPECIAL USES
SMALL LOT INDUSTRIAL PRECINCT (1 Ac - 2 Ha Lots)	WETLAND & STORMWATER DETENTION
LARGE LOT INDUSTRIAL PRECINCTS (2 Ha - 10 Ha Lots)	RURAL PRODUCTION ZONING
NORTHERN INDUSTRIAL PRECINCT	PROPOSED RAIL SPUR
	SITE BOUNDARY

**INDUSTRIAL ESTATE INVESTIGATION AREA
BEAUDESERT BOONAH ROAD, BROMELTON
PRECINCT CONCEPT PLAN**

