



National Measurement Institute,
Australian Astronomical
Observatory And Enterprise Connect
105, Delhi Road North Ryde

Locality Plan

2



Epping Road

Delhi Road

National Measurement Institute,
Australian Astronomical
Observatory And Enterprise Connect
105, Delhi Road North Ryde
Locality Perspective








Australian Government
National Measurement
Institute

5

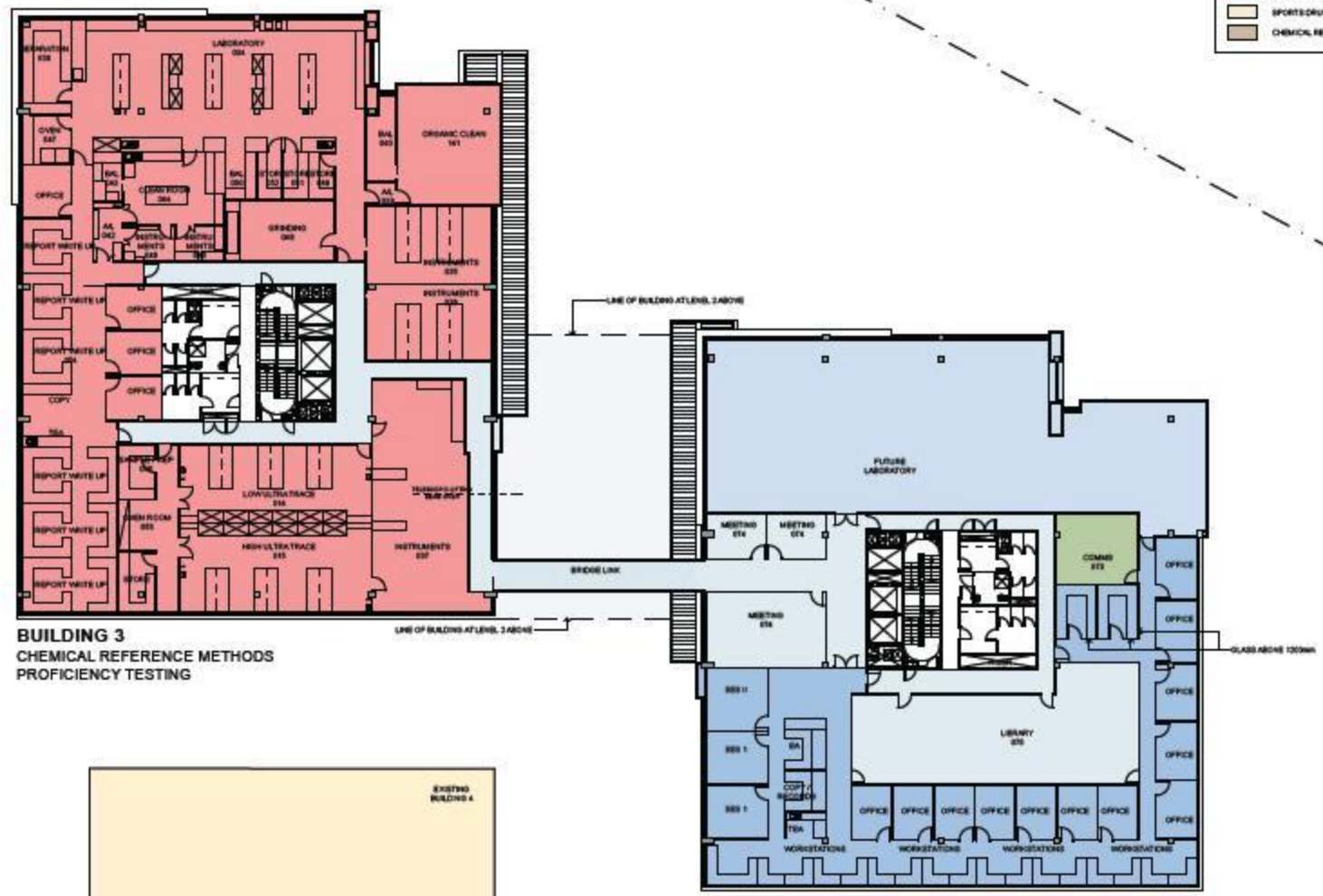
National Measurement Institute,
Australian Astronomical
Observatory And Enterprise Connect
105, Delhi Road North Ryde
Front Entry Perspective



NO ASSURANCE IS GIVEN BY THE ARCHITECT THAT THE INFORMATION CONTAINED HEREIN IS COMPLETE OR ACCURATE. THE ARCHITECT'S LIABILITY IS LIMITED TO THE SCOPE OF THE SERVICES PROVIDED BY HIMSELF OR HERSELF.

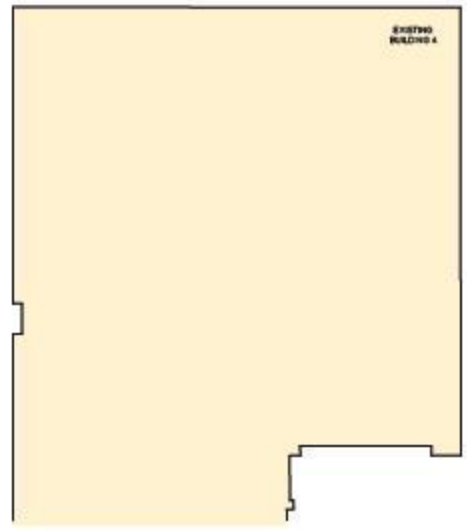
LEGEND

[Light Blue Box]	COMMON AREA
[Blue Box]	OFFICES & WORKSTATIONS
[Light Green Box]	ENTERPRISE CONNECT
[Green Box]	COMMUNICATIONS ROOM
[Light Yellow Box]	AAO LABORATORIES
[Pink Box]	NON EXECUTIVE
[Red Box]	CHEMICAL REFERENCE METHODS PROFICIENCY TESTING
[Light Red Box]	CHEMICAL ANALYSIS
[Light Green Box]	FORENSIC DRUGS
[Light Blue Box]	SPORTS DRUGS
[Light Yellow Box]	CHEMICAL REFERENCE



BUILDING 3
CHEMICAL REFERENCE METHODS
PROFICIENCY TESTING

BUILDING 2
AAO ASTRONOMERS / EXECUTIVE /
LIBRARY



REV	DESCRIPTION OF CHANGE	DATE	DESIGN	BY
A	GENERAL REVISION	04	G.A.	11.06.2010
B	GENERAL REVISION	04	HS	12.11.2010
C	GENERAL REVISION	04	HS	16.11.2010
D	GENERAL REVISION	04	HS	16.11.2010
E	GENERAL REVISION	04	HS	17.11.2010

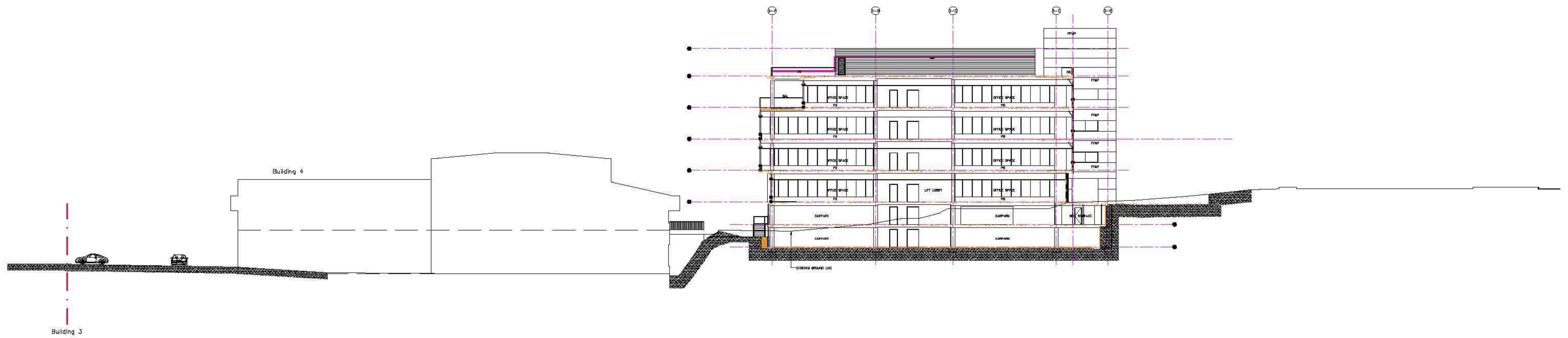


ARCHITECT
RICE DAUBNEY
ANALYSIS, CREATION AND
IMPLEMENTATION ARCHITECTURE

PROJECT
NATIONAL MEASUREMENT INSTITUTE,
AUSTRALIAN ASTRONOMICAL
OBSERVATORY AND
ENTERPRISE CONNECT
105, DELHI ROAD
NORTH RYDE, NSW, 2113

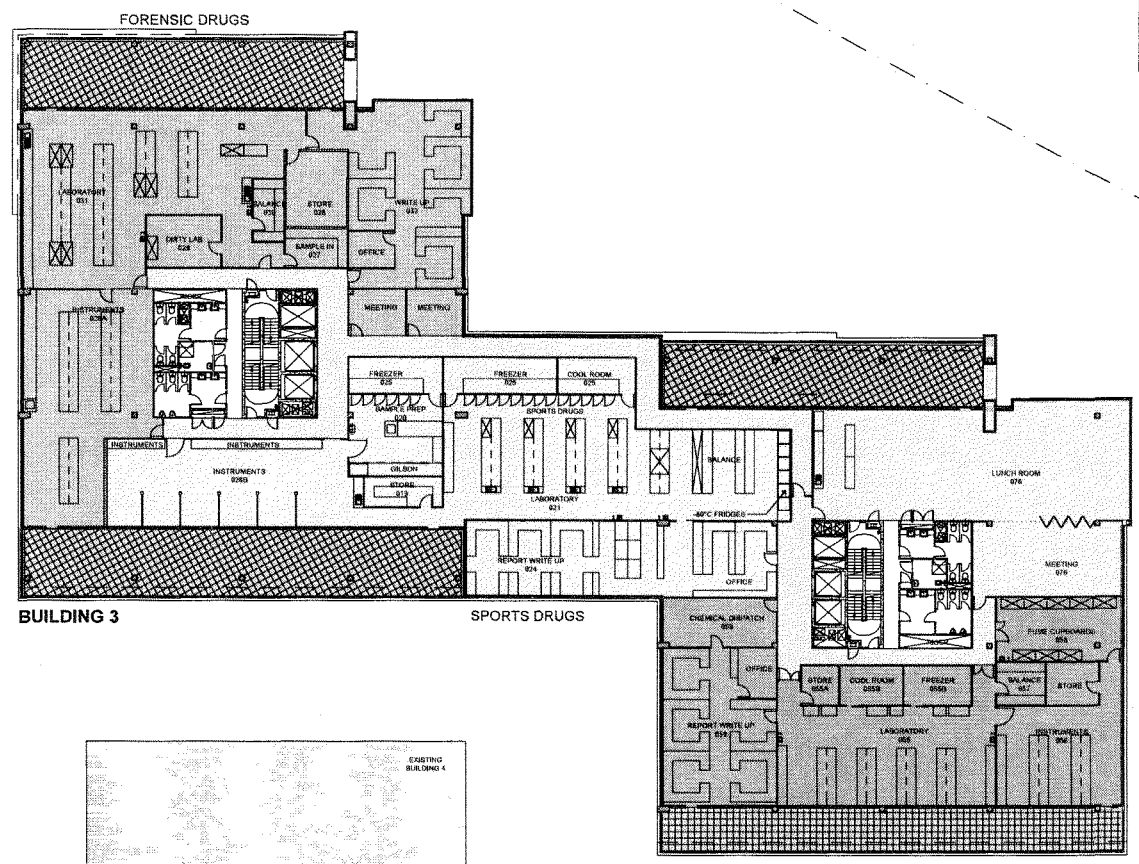
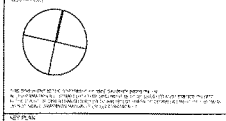
DOCUMENT TITLE
DEVELOPMENT PLAN
LEVEL 01

DATE	DATE	DESIGN
1:200 @ A1	07/10/2010	G.A.
PROJECT NUMBER	DESIGN NUMBER	REV
10519	A1301	E



LEGEND

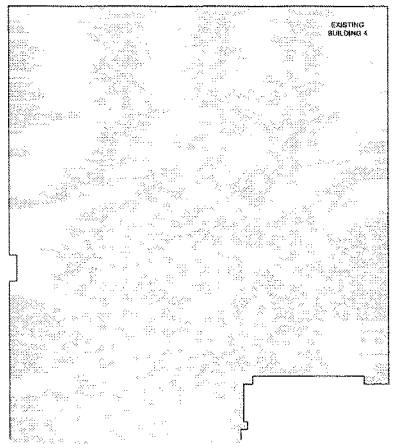
[Pattern]	COMMON AREA
[Pattern]	OFFICES & WORKSTATIONS
[Pattern]	ENTERPRISE CONNECT
[Pattern]	COMMUNICATIONS ROOM
[Pattern]	AD LABORATORIES
[Pattern]	NMI EXECUTIVE
[Pattern]	CHEMICAL REFERENCE METHODS PROFICIENCY TESTING
[Pattern]	CHEMICAL ANALYSIS
[Pattern]	FORENSIC DRUGS
[Pattern]	SPORTS DRUGS
[Pattern]	CHEMICAL REFERENCE



BUILDING 3

SPORTS DRUGS

BUILDING 2
CHEMICAL REFERENCE
MATERIALS

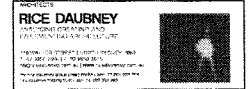


EXISTING BUILDING 4



EXISTING BUILDING 1

REV	DESCRIPTION OF CHANGE	DATE	BY	CHKD	DATE
A	GENERAL REVISION	SA	SA	SA	11.10.2010
B	GENERAL REVISION	HA	HA	HA	12.11.2010
C	GENERAL REVISION	HA	HA	HA	15.11.2010
D	GENERAL REVISION	HA	HA	HA	16.11.2010
E	GENERAL REVISION	HA	HA	HA	16.11.2010
F	GENERAL REVISION	HA	HA	HA	17.11.2010
G	GENERAL REVISION	SA	SA	SA	15.12.2010



**NATIONAL MEASUREMENT INSTITUTE,
AUSTRALIAN ASTRONOMICAL
OBSERVATORY AND
ENTERPRISE CONNECT
105, DELHI ROAD
NORTH RYDE, NSW 2113**

**DEVELOPMENT PLAN
LEVEL 03**

SCALE	SHEET	REVISED
1:200 @ A1	07/10/2010	SA
PROJECT NUMBER	ISSUE NUMBER	SCALE
10519	A1303	G