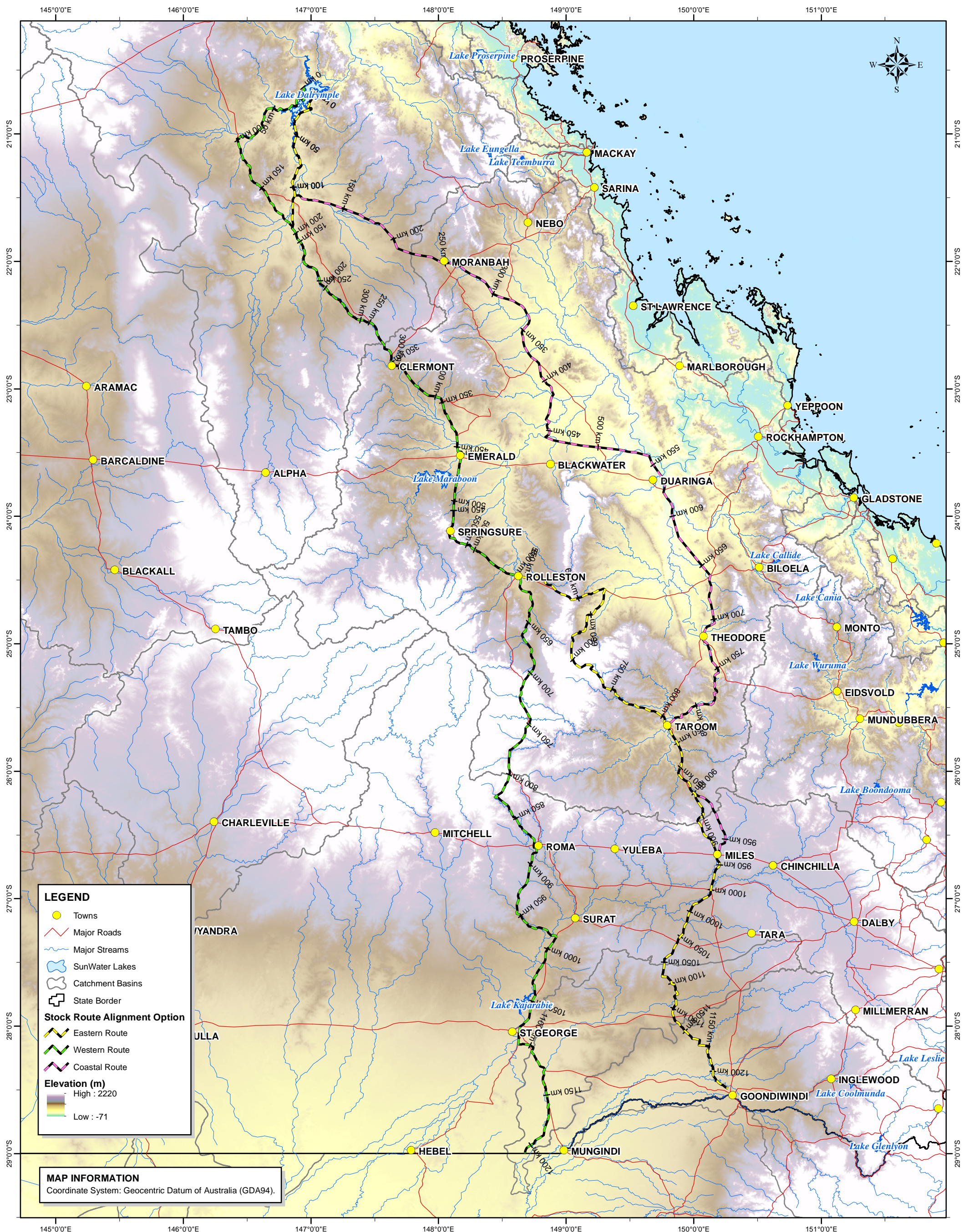


Submission 19:
Attachment C

While every care is taken to ensure the accuracy of this product, SunWater makes no representations or warranties about its accuracy, reliability, completeness or suitability for any particular purpose and disclaims all responsibility and all liability (including without limitation, liability in negligence) for all expenses, losses, damages (including indirect or consequential damage) and costs which you might incur as a result of the product being inaccurate or incomplete in any way and for any reason.

MAP PRODUCED BY:
INFRASTRUCTURE DEVELOPMENT
TEL: (07) 3120 0000

Document: T:\Asset Solutions\Ext-Aust Water Exploration CoIP-AEXP-0023-AB-01-03 Qld to Victoria Canal\Drawings\ArcMap\243879-C.mxd
Printed: Friday, 20/12/2013 10:16:03 AM



LEGEND

- Towns
- Major Roads
- Major Streams
- SunWater Lakes
- Catchment Basins
- State Border

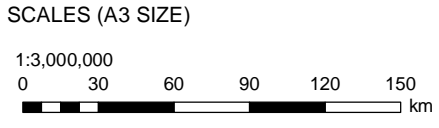
Stock Route Alignment Option

- Eastern Route
- Western Route
- Coastal Route

Elevation (m)

High : 2220
Low : -71

MAP INFORMATION
Coordinate System: Geocentric Datum of Australia (GDA94).



DRAWN	DESIGNED
IDH	
CHECKED	CHECKED
APPROVED	



NORTH TO SOUTH WATER TRANSFER PROJECT
STOCK ROUTE ALIGNMENT OPTIONS
BURDEKIN FALLS DAM TO
NSW - QLD BORDER

CONTRACT NUMBER	
DRAWING NUMBER	243879
DATE	DEC 2013
A	B C

REVISION	DATE	REMARKS	CKD	PSD
20/12/13	C	COASTAL ROUTE & BASINS ADDED		
17/12/13	B	ISSUED FOR USE	--	--
16/12/13	A	ISSUED FOR REVIEW	--	--