

Taken at Public hearing on 24/2/03, Wyong, provided by Mr Youngsford, Wyong Shire Council.  
S. 1.1  
24/2/03

# PRESENTATION TO STANDING COMMITTEE ON AGEING



## WYONG SHIRE COUNCIL

# WHAT WE NEED

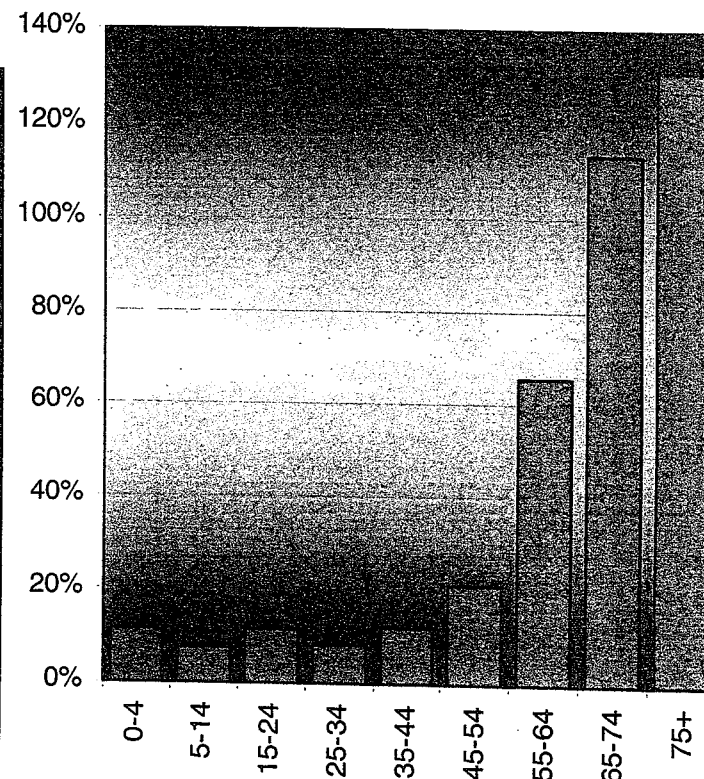
- INTEGRATED TRANSPORT PLANNING
- STRATEGIES TAKING A WHOLE OF GOVERNMENT APPROACH
- FUNDS TO PROMOTE SAFETY

# POPULATION PROFILE

- WYONG SHIRE HAS ONE OF THE HIGHEST AGED POPULATIONS BY COMPARISON WITH OTHER LOCAL GOVERNMENT AUTHORITIES.
- WYONG SHIRE HAS A SKEWED POPULATION PROFILE.
- WYONG SHIRE HAS ONE OF THE HIGHEST GROWTH RATES.

# Population Change in Australia

population change from 2001-2031



Age	2001	2031	% change
0-4	1,007,598	1,119,913	11%
5-14	2,665,535	2,872,890	8%
15-24	2,717,248	3,019,719	11%
25-34	2,933,336	3,175,229	8%
35-44	2,962,689	3,317,139	12%
45-54	2,681,197	3,245,781	21%
55-64	1,922,677	3,189,455	66%
65-74	1,338,319	2,856,960	113%
75+	955,707	2,210,387	131%

GEN.X

BABY BOOMERS

SENIORS

Source: ABS Population Projections, 3222.0

# POPULATION COMPARISONS

AREA	Population aged 55-64 years			
	Male	Female	Total	% of Pop.
NSW	297552	294839	592391	9.2
Central Coast	13060	14010	27070	9.4
Wyong	6006	6576	12582	9.6
Gosford	7054	7437	14488	9.3
Campbelltown	5390	5080	10470	7
Blacktown	9839	13720	23559	8.8
Fairfield	7746	10726	18472	10
Liverpool	5789	5471	11260	7
Lake Macquarie	8962	9331	18293	10
Penrith	6474	6002	12476	7

# Labour Force - Ageing

- With Australia's population ageing, the labour force will also age.
- More than 80% of the projected growth in the labour force between 1998 and 2016 will be in the 45 years and over age group.

## *Labour Force - Participation Rates*

- Women's participation in the labour force is projected to rise in every age group except those aged 15 to 19 and those aged 65 and over.
- Labour force participation rates for men are projected to fall in every age group except those aged 60 and over.

## *Baby Boomers Profile*

- Born post 1940
- Seniors born prior to 1940
- With reference to current seniors - the following Baby Boomer observations can be made:
  - Better educated
  - They are less likely to be financially dependant on the community due to their relative wealth compared with previous generations
  - More mobile





*A New Service Mix*

# *New Fringe Dwellers - Boomers Move Out NOT In*

1. “Fast Growth - Fast Ageing”
2. Household Structure - “Couple Families with Children will no Longer Dominate”
3. Diverse Housing Type

Suburbs and Regional Locations

## *Living Alone - Increasingly Common*

- 2.4 million to 3.4 million people living alone by the year 2021.
- An increase of between 52% and 113%, from the 1996 level of 1.6 million

# *THE STRATEGY ADDRESSES*

- TRANSPORT
- ACCESS TO INFORMATION
- SERVICE CO-ORDINATION
- HOSPITAL ADMISSION AND DISCHARGE
- ON GOING RESEARCH
- SUPPORTIVE LIVING
- PLANNING OF SERVICES

# CONTINUED

- DEVELOPED CO ORDINATED PROTOCOLS FOR ADMISSION AND DISCHARGE
- RESEARCH PROGRAMS INITIATED THROUGH UNIVERSITY TO RESEARCH MIGRATION AND HEALTH PATTERNS

## *CONTINUED*

- TO AN OLD PERSON, MIDDLE AGE IS 51 AND OLD AGED IS 72.
- PEOPLE'S EXPECTATION AS THEY AGE ARE LINKED TO 'FREEDOM OF CHOICE' – TO DO WHAT ONE WANTS TO DO AND WHEN ONE WANTS TO DO IT.

*SPECIFIC ISSUES*



# HEALTH CONCERNS FOR COUNCIL

- CHRONIC UNDER RESOURCING OF HOSPITALS
- LACK OF MEDICAL PRACTITIONERS
- REMOVAL OF BULK BILLING OPTIONS
- GP'S DO NOT SUPPORT HOME OR FACILITY VISITS FOR CARE DELIVERY



# *EDUCATION*

- LIFE LONG LEARNING PROGRAMS
- SKILL RETENTION AND ENHANCEMENT
- EXPANDED ACCESS TO LIBRARIES
- ACCESS TO TECHNOLOGY

# HOUSING

- EXPAND PUBLIC OWNED STOCK OF HOUSING
- RENT CONTROLS ON PRIVATE HOUSING STOCK
- AFFORDABLE REHOUSING OPTIONS

# WHAT WE NEED

- INCREASED RENTAL SUBSIDIES
- INCREASED RESOURCES FOR THE HACC PROGRAM
- INCREASED FUNDING FOR RESPITE CARE
- SUPPORT FOR FAMILIES ACTING AS CARERS

# *RESIDENTIAL CARE CONCERNS FOR COUNCIL*

- COST OF PLACEMENT
- NO OBLIGATION TO PLACE LOCAL RESIDENTS
- INADEQUATE FUNDING OF CONSTRUCTION COSTS OF FACILITIES BY GOVERNMENT
- FAMILY DISLOCATION

# TRANSPORT

- ACCESS TO RELIABLE AFFORDABLE TRANSPORT
- ACCESS TO SPECIALISED TRANSPORT OPTIONS
- LOCALITY BASED SERVICES TO REDUCE TRAVEL

# *SUMMARY CONTINUED*

- LOCAL GOVERNMENT SHOULD NOT BE REQUIRED TO FUND THE COST OF AGEING INITIATIVES
- IN NAPPY VALLEY WE ALL AGE
- THANKYOU
- QUESTIONS