



**Australian Government**

**Department of Defence**  
Corporate Services &  
Infrastructure Group

Brigadier Peter (Hutch) Hutchinson  
Director General Infrastructure Asset  
Development  
BP-1-6001  
Department of Defence  
**CANBERRA ACT 2600**  
peter.hutchinson@defence.gov.au  
Tel: 02 6266 8101  
Fax: 02 6266 8103

DGIAD/ OUT /2005/ 134

The Hon Judi Moylan MP  
Chair  
Parliamentary Standing Committee on Public Works  
Parliament House  
CANBERRA ACT 2600

Dear Ms Moylan,

### **AMBERLEY STAGE TWO REDEVELOPMENT PROJECT - SUPPLEMENTARY SUBMISSION**

I would like to take the opportunity to provide a supplementary submission in response to the Australian Koala Foundation's Submission "Re: RAAF Base Amberley Redevelopment Stage 2, Queensland" dated 2 August 2005.

The environmental management of all of Defence's activities is governed by the *Environment Protection and Biodiversity Conservation Act 1999* (EPBC Act). Defence must obtain the approval of the Commonwealth Minister for the Environment and Heritage for any action or activity that has, will have or is likely to have a significant impact on the environment. Even where Defence actions or activities do not represent a significant risk to the environment they may still be regulated by our own internal policies and processes that aim to demonstrate Defence leadership in environmental stewardship and deliver better environmental management outcomes overall.

Environmental Resources Management Australia (ERM) Pty Ltd was engaged by Defence in June 2004 to undertake an environmental impact assessment for the Stage 2 Redevelopment of RAAF Base Amberley. The environmental impact assessment was reviewed by Defence environmental staff who concluded that the potential environment and heritage impacts associated with the proposed works, including the construction of facilities, would not impact on matters likely to be protected under the EPBC Act.

Defence will be implementing internal environmental management controls for the proposed works, described in the Environmental Clearance Certificate, to ensure works progress in accordance with best practice environmental standards. Environmental management requirements will also be dictated by the construction contract (within the contract specifications). The works proposed under the project include a provision for koala habitat planting.

The proposed koala habitat has been developed by GHD Pty Ltd as part of their design consultancy for the upgrade of base infrastructure and engineering services at RAAF Base

Amberley. GHD recommends habitat plantings along the route shown in Attachment A with provenance species such as *E. tereticornis* and *E. crebra*. These species grow on other parts of the Base and currently show evidence of koala utilisation. It is proposed to source seeds for the corridor/compensatory plantings from local trees of these species.

As part of their consultancy for this project, GHD Pty Ltd will develop a koala strategy for RAAF Base Amberley. This strategy will take into consideration the current redevelopment proposal (including proposed corridor), the Masterplan and Defence operational objectives of the Base.

To assist in the development of the strategy GHD Pty Ltd are commissioning further studies to determine:

- Size of the local koala population;
- Further investigation of patterns of utilisation of the vegetation around the Base by koalas ;
- Further investigation of possible routes for koala dispersal both through the Base and further a field;
- Consistency of the strategy with the current Queensland Draft Nature Conservation (Koala) Conservation Plan 2005 and Management Program 2005-2015, and the South East Queensland Regional Plan Interim guideline - Koalas and Development; and
- Further literature searches of koala movement patterns and requirements in south-east Queensland.

Further investigation of the existing koala management literature in south east Queensland will also be undertaken with a view to providing recommendations on appropriate koala exclusion fencing and the situation of fencing. This work may also involve discussions with leading koala experts such as Dr Frank Carrick, Ms Harriet Preece, Mr Steve Phillips and members of the Queensland Environmental Protection Agency. At this stage Defence is satisfied that this group represents sufficient expertise to provide advice on managing koala habitat.

Yours sincerely,



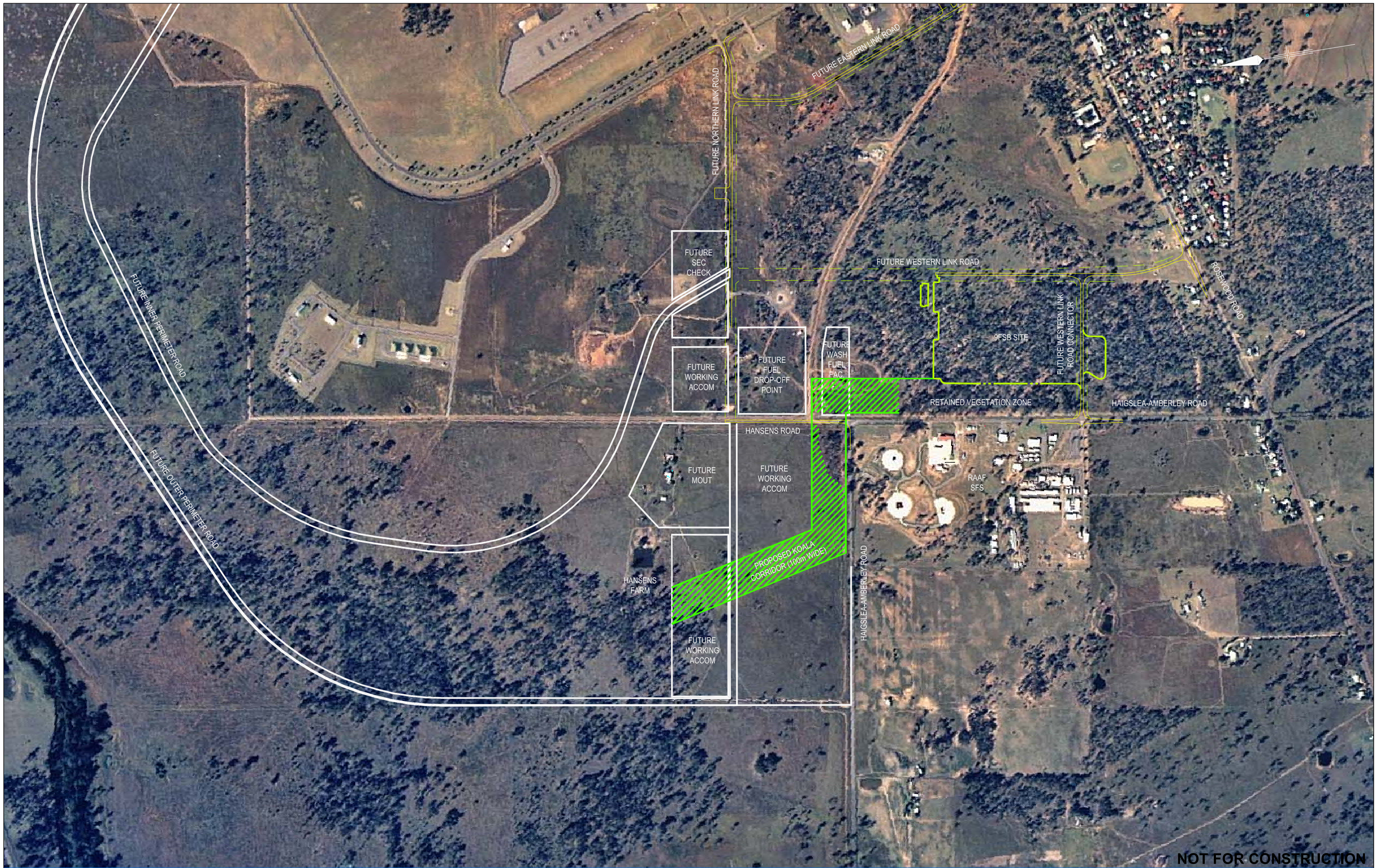
**P.J. (Hutch) Hutchinson**  
Brigadier  
Director General Infrastructure Asset Development

25<sup>th</sup> August 2005

**Attachment:**

- A. Koala Corridor Locality Plan






**NOT FOR CONSTRUCTION**

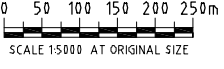
No	Revision	Note: * Indicates signatures on original issue of drawing or last revision of drawing	Drawn	Checked	Approved	Date
A		DETAILED DESIGN REPORT ISSUE	CPH			27.07.05


**Australian Government**  
 Department of Defence  
 Corporate Services & Infrastructure Group

Project Manager and Contract Administrator  
**Connell Wagner**  
Connell Wagner Pty Ltd ABN 54 005 139 873  
 433 Boundary St. (Locked Bag 1800) Spring Hill  
 Queensland 4004 Australia  
 T +61 7 3246 1000 F +61 7 3246 1001  
 Email: cwbire@connel.com

Copyright - "This document is and shall remain the property of GHD Pty Ltd."  
 GHD Conditions of Use. "This document may only be used for the purpose for which it was commissioned & in accordance with the terms of engagement for the commission."

  
**GHD**  
 MANAGEMENT ENGINEERING ENVIRONMENT  
 GHD Pty Ltd ACN 006 489 373  
 201 Charlotte Street Brisbane QLD 4000  
 GPO Box 668 Brisbane QLD 4001  
 T 61 7 3316 3000 F 61 7 3316 3333  
 E bnemall@ghd.com.au www.ghd.com.au



Scale	AS SHOWN	<b>DO NOT SCALE</b>
Drawn	C.HOWARD	Designed J.TIMMS
Drafting Check		Design Check
Approved		
Date		
This Drawing must not be used for Construction unless signed as Approved		

Client	DEPARTMENT OF DEFENCE		
Project	RAAF AMBERLEY STAGE 2 - TRUNK SERVICES (R7005)		
Title	KOALA CORRIDOR/COMPENSATORY VEGETATION PLAN		
Original Size	A1	Drawing No:	41-14691-SK004
Stage:	DD	Rev:	A