

B'nai B'rith Australia/New Zealand



**B'nai B'rith  
Anti-Defamation  
Commission Inc.**

PO Box 450, Caulfield South,  
Victoria, Australia 3162  
tel: (03) 9527 1228  
fax: (03) 9525 9127  
[antidef@optusnet.com.au](mailto:antidef@optusnet.com.au)

**BOARD**

**Chairman:**

Dr Paul Gardner

**Vice-chairman:**

Professor Andrew Markus

**Secretary:**

Miriam Suss

**Treasurer:**

Eric Cohen

**Members:**

Dr Dvir Abramovich

Dr George Deutsch

Ernie Friedlander

Kurt Rathner

**President,**

**B'nai B'rith Australia/New Zealand:**

James Altman

**STAFF**

**Senior Research Analyst:**

Dr Rodney Goultman

**Liaison Officer:**

Annette Gladwin

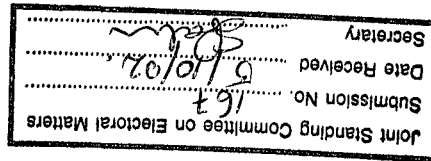
**Executive Secretary:**

Emma Oshlack

**BOARD OF ADVISERS**

The Rt Hon Sir Zelman Cowen  
AK GCMG GCVO QC DCL  
The Rt Hon Malcolm Fraser AC CH  
The Hon R.J.L. Hawke AC  
Dr Lowitja O'Donoghue AC CBE  
The Rt Hon Sir Ninian Stephen  
KG AK GCMG GCVO KBE  
The Hon Neville Wran AC QC  
Sir Walter Campbell AC

ABN 67 404 034 406  
Registration No. A 0037143P



1 October 2002

The Secretary,  
Joint Standing Committee on Electoral Matters,  
Parliament of Australia  
Canberra,  
ACT 2600

Dear Madam,

**Re: Unsuitability of the Citizens Electoral  
Council to continue to be registered as a  
political party in Australia.**

The B'nai B'rith Anti-Defamation Commission Inc. (ADC) is the human rights arm of B'nai B'rith Australia/New Zealand. Its central purpose is to oppose racism and anti-Semitism and to expose the activities of extremist organisations that contribute to disharmony in multicultural societies.

The ADC argues in the enclosed submission that the rules of the Australian Electoral Commission should be tightened in order to prevent unfit organisations such as the Citizens Electoral Council from continuing to enjoy the status of a political party in Australia.

We request your Standing Committee to consider this request.

Yours sincerely

(Dr) Paul Gardner  
Chairman  
B'nai B'rith Anti-Defamation Commission Inc.

(03) 9578 4724; 0412 275 623

**Submission of the B'nai B'rith Anti-Defamation Commission Inc. to the Standing Committee of the Federal Parliament on Electoral Matters:**

**Subject: *The registration of the Citizens Electoral Commission as a political party.***

There is little doubt that an open and unfettered party system has greatly contributed to Australia's robust liberal democracy. However, though the Citizens' Electoral Council (hereafter CEC) is a registered political party, it is neither open nor unfettered. Rather, its objective is to undermine the very political system that gives it succor. By its very nature a democratic society contains within it a vast range of views on all kinds of matters and this should be encouraged. Nonetheless, this is not a licence to destroy the democratic system itself. Even a democratic society needs to be defended. The CEC's own literature rejects the principles and tenets which underpin the Australian political system. It shows a deliberate intent to undermine the notion of tolerance which pervades Australian society and which has the support of the vast majority of its citizens whose cultural backgrounds are many.

On any measure of objectivity the CEC appears to be a cult or sect masquerading as a political party. The evidence for this is supported by its questionable practices. It has a guru, Lyndon LaRouche, who controls and directs the CEC from his headquarters in Leesburg, Virginia in the United States. Indeed, the CEC is an unabashed mouthpiece of Lyndon LaRouche in Australia. Nothing is done without the imprimatur of this man. La Rouche is a convicted felon in the United States, sentenced in December 1988 to 15 years in prison for conspiracy and mail fraud. Paroled in January 1994, La Rouche has established a worldwide organization to spread and activate his extreme economic, political, social, and racial ideas.

The CEC has its headquarters in the Melbourne suburb of Coburg. There is nothing transparent about its operations. The LaRouche organization compels its overseas operators like the CEC to implement its programmes, methods, and techniques including those concerned with funding. This latter point might help explain how it is that the CEC with an acknowledged small financial membership, and not even a sniff of likely parliamentary representation anywhere in Australia, is the fifth most cashed-up political party in the nation. It is patently clear that the CEC's extensive cash flow is not absorbed by electoral matters. Rather, such money is redistributed to other branches of the LaRouche organizational family. All senior roles in the CEC are determined by its masters in Leesburg.

That the CEC has been granted registration by the Australian Electoral Commission (hereafter AEC) suggests that it is time for the AEC to overhaul its rules. Australian law currently forbids persons in

possession of a foreign passport or dual citizenship from becoming members of the federal parliament. And yet, the AEC permits a group such as the CEC, whose allegiance is to a foreign organization, to stand candidates as a political party in both federal and state elections in Australia. This apparently contradictory situation is made even more incongruous when the CEC is also able to register another political party called the *Curtin Labor Alliance* to contest elections in Western Australia against itself.

### **CEC Ideology**

Clear accounts of the convoluted ideology, platform and objectives of Lyndon LaRouche aka CEC's can be found in Appendices A & B. These expose the CEC as a totalitarian sect which at its core is both racist and antisemitic. The odd LaRouche/CEC internationalist and nationalist worldview is permeated with this hateful ideology. To obtain financial and human support for its activities, the CEC especially targets are the frail, elderly, the socially bewildered and the culturally alienated.

### **CEC Finances**

The probity of the CEC is not at all supported by its financial statements which by law it is required to furnish to the AEC. These documents fail to clarify how and from whom its extensive funds are raised. Moreover, a gigantic query hovers over the expenditure account. If only the last two financial returns of CEC are taken as an example of its operations, (Appendices C&D) donations of \$1,500 or more supply the CEC with only a small percentage of the overall revenue 'given' it. A claim by CEC's national secretary, Craig Isherwood (Sunday Telegraph, March 3, 2002) that its revenues were so large because they included sales of videos and literature beggars credulity. Neither is the enigma answered when it comes to the sect's debt. The 1999/2000 return declares that it has been obliged to dispatch \$941,115.24 of the \$1,113,220.22 collected to be dispatched to another LaRouche member, "Publications and General Management" in Leesburg. Indeed, the bulk of CEC monies is earmarked to LaRouche fronts. In spite of the CEC's acknowledgement that it has 22 field officers fully employed to bring in revenue, their collective wage bill fails to appear in the financial statements. These documents cover-up far more than they reveal.

### **Curtin Labor Alliance**

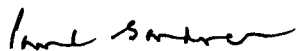
In 2000, the CEC joined with the WA Municipal Employees' Union to form the *Curtin Labor Alliance*. The name of Curtin, Australia's deeply respected war-time Prime Minister, was probably chosen with the intent of misleading the union and the wider public into believing that they were supporting a respectable Labor-oriented party. The person who applied for its registration as a political party was the CEC's national secretary, Craig William Isherwood of 15 Muchell Grove, Coburg, Melbourne (Appendix

E). This raises questions not just about the propriety of one accredited political party being involved in the creation of another, but the purpose of such an act. The federal elections of 2001 provided the spectacle in Western Australia of the CEC competing for seats in the Senate and House of Representatives against its own *Curtin Labor Alliance*. Elections tend to concentrate the public mind on national issues. Given that electoral support for the two parties collectively was always going to be miniscule – as confirmed by this federal poll – it must be concluded that the objective of the contest was primarily the propagation of LaRouchean ideas. If this created a condition for the CEC to lay claim on the public purse for future elections, it would be an added bonus.

### **Conclusion**

The Anti-Defamation Commission (here after ADC) contends that a full investigation should be carried out, with the full weight of parliamentary authority, into the funding mechanisms of the CEC. This should include, if necessary, examination by federal criminal investigation authorities in conjunction with professional auditors.

The ADC notes there are rules in place concerning the funding of political parties. However, in the ADC's view, there seem to be inadequate sanctions for breaches of these rules. Hence it believes that if the CEC, or any other organization which sponsors a political party breaches those rules, effective penalties should be applied. These could include the forfeiting to the Commonwealth of all funds obtained in breach of the Electoral Commission's rules.



(Dr) Paul Gardner  
Chairman

B'nai B'rith Anti-Defamation Commission  
99 Hotham St. Balaclava, Victoria 3182

The assistance of the ADC's senior political analysis, Dr. Rodney Goultman, in compiling this submission is gratefully acknowledged.

### **APPENDICES**

- A. Goultman. R. (2001). Pernicious vision: Challenge from within Australia's extreme Right. *Australian Journal of Jewish Studies*, XV, 46-63.
- B. B'nai B'rith Anti-Defamation Commission (2001). The LaRouche cult: The Citizens Electoral Council, Briefing Paper No. 2 (February)
- C. Citizens Electoral Council of Australia (2000). Political Party Annual Return.
- D. Citizens Electoral Council of Australia (2001) Political Party Annual Return.
- E. Australian Electoral Commission (2001). Register of Political Parties. *The Australian*, 8th August.

## ***Pernicious Vision: Challenge from within Australia's Extreme Right***

**Rodney Goultman**

### **Introduction**

The import of racist-Right ideas into Australia occurred long before the Internet became a major warehouse of international hate. Usually but not always these newcomers have had an American parentage. There can be no greater example of this than the *Citizens' Electoral Council* (hereafter *CEC*). It is a tad ironic that this transplant has come into being through the hijack of a cabal of the Australian League of Rights (hereafter the *League*), perhaps the oldest, and certainly the most persistent racist-Right secret organization in the land. As a Lyndon LaRouche clone, the *CEC* hit the road down-under at a full run, well cashed up. It has positioned itself to challenge the *League's* primacy in the extreme Right.

After the Holocaust, public expressions of antisemitism have usually been regarded down-under as socially gauche and politically inept. This does not mean that those ideologically disposed to promote Judeophobia have quietened; rather they have parked it under an anti-Zionist banner. In their vocabulary of hate, the *World Jewish conspiracy* has been re-tuned as the *World Zionist conspiracy*. The object of this unsubtle subterfuge is at least threefold—to fireproof themselves against the charge of antisemitism, to politicise what is racial, and to garner support from those opposed to the existence of the Jewish State. Rarely does the *CEC* speak of the evils of Judaism or Jews per se; rather it abuses Jewish leaders and organizations such as the B'nai B'rith Anti-Defamation Commission. However, the fact is that, being a Lyndon

*A Pernicious Vision: Australia's Extreme Right*

LaRouche plant, the *CEC* rests easy on a thoroughly antisemitic foundation.

Most academic commentators admit that terms such as "extreme Right," racist Right," "ultra-Right," or even "lunar Right," are too often used without definitional precision. Nonetheless, as Paul Spoonley suggests, all these nomenclatures are synonyms for groups whose overall ideology includes conspiracy theory, heightened antisemitism, delusions of the supremacy of the white race, sexism, an intense contempt for liberal democracy, and a distaste for anything which even hints at socialism or communism (Spoonley 1987:21-46). Their intense paranoia leads them to operate in secrecy, using front groups to speak for them in public.

Albeit too briefly, this article addresses the *CEC*'s pivotal notions, paranoia and eccentric social, political and racial ideas, while mentioning its particular totalitarian structure and scurrilous methods. Like others of its ilk, *CEC* has as its target demographic generally, but particularly in the rural and regional areas, those who feel deeply hurt, alienated, and left bewildered by the consequences of rapid technical and social changes which are continuing to engulf them. Given that post-industrialism is at full throttle, and into the foreseeable future unlikely to diminish, the potential growth for groups such as the *CEC* is most evident, with a prospect that could spell danger for the nation's democratic system.

Unlike others in the extreme Right family such as the *League* which eschews overt party political action,<sup>1</sup> the *CEC* does masquerade as a political party, not in its own right as such, but as a shopfront for Lyndon LaRouche. It has already contested past State and Federal elections, and is preparing for the next crop. As a pseudo-party, though one officially registered, the *CEC* given its nature fails the test of transparency and accountability. Entering mainstream politics, it has the potential in a democratic system to pervert the public debate.

Given the understandable growing unease over globalization and its associated notions such as free trade, deregulation and privatisation, there seems to be, on the linguistic plane, justification

Rodney Gouttman

for Left and extreme Right critiques. This provides the extreme Right with an opportunity to gain some respectability, and a possible conduit by which its other views may be propagated. Because of its anti-Zionist banner, the *CEC* may attract support from those people and organizations who are angered by the continued existence of the State of Israel.

As an extreme Right agoraphobe, the *CEC* uses all the agencies—the Internet, sectarian broad sheets, pamphlets, books, videos, talk-back radio, grass roots street-stall harangues, letter box drops—to spread its word. Though the *CEC* does not court public attention through open displays of violence as does *National Action*, contrary to its rhetoric its ultimate purpose is the destruction of the liberal democratic state which it sees as a Jewish creation.

## **The League Challenged**

From its inception the *League* has dutifully followed its founder, mentor and organization supremo, Eric Butler, whose influence has spread through the old white British Empire/Commonwealth—Canada, Great Britain, New Zealand and South Africa (Campbell 1978). It continues to be wedded to the Social Credit doctrines of Englishman C.H. Douglas (1979), and to the racialism of *The Protocols of the Learned Elders of Zion*, interpreted by Butler as *The International Jew: The Truth about the Protocols of Zion*. Only in 1999 did illness force this octogenarian to relinquish his leadership of the *League*.<sup>2</sup> It is yet to be seen how the *League* will stand the changes from within the Rightwing family without him.

A plethora of latter day Rightwing groups has arisen, including *New Ageists*, Holocaust deniers, the *Adelaide Institute*, bullying *National Action*, atheistic *Christian Identity* groups, *Christians Speaking Out*, and the Gun Lobby. None has challenged the influence of the *League* in the way the *CEC* has. Fundamentally, unlike other extreme Rightwing groups, these two are ideologically at loggerheads. The *CEC* is totally committed to the assassination of the *League's* most cherished value—support for all things Anglo-Saxon, and particularly the British Monarchy, which the *CEC* sees as the devil incarnate.

## Origins

The *CEC* is a creation of convicted American felon and former United States presidential candidate, Lyndon LaRouche, who describes himself as a "physical economist." His stamp is on every utterance and action. The *CEC* website proclaims itself "a federally-registered political party... led by the Australian co-thinkers of American statesman and economist Lyndon LaRouche..." The purpose is to promote LaRouche theory and practice modified to the specific call of the Australian context. The original *CEC* in Queensland was established in the late 1980s, with a preponderance of *League* members including current President Betty Luks,<sup>3</sup> to advocate the implementation of the Swiss notion of Citizens Initiated Referendum as a dominant feature of the Australian mainstream electoral system. By 1992 the *CEC* was hijacked and fully absorbed into the Lyndon LaRouche camp. The *CEC*'s broadsheet underwent a name change from *The Citizen* to *The New Citizen*. Organizational headquarters moved from rural Queensland to the working class Melbourne suburb of Coburg.<sup>4</sup> The reason given for the transfer was that it saw Melbourne as the capital of Australian Jewry, and hence it was efficacious to observe the arch enemy in its lair from close range. The newly cosseted headquarters was wired to the LaRouche bunker in Leesburg, Virginia, USA. While LaRouche has not visited Australia, though such a move was once mooted,<sup>5</sup> his criminal record is not likely to induce Australian authorities to permit his entry.

## The Guru's World View<sup>6</sup>

The LaRouche *Weltanschauung*, unequivocally totalitarian, sits easily upon antisemitic foundations. Blame for all the social evils confounding the contemporary world is attributed to a mystical body called the *Oligarchy*, which just so happens to be a clutch of bankers and usurers who are the descendants of Jews dispersed to Babylon. After leaving Babylon they spread across the world, finally to gather in London. There they settled to plot the destiny of the world on their own terms, and establish the LaRouche version of the world Jewish *cum* Zionist conspiracy.



Rodney Goutman

Via the *CEC*, LaRouche projects his own obsession for secrecy and conspiracy, and his penchant for front organizations onto the *Oligarchy*. True to extreme Rightwing orthodoxy, it has a mysterious organization to do its bidding in Switzerland since 1947, the *Mont Pelerin Society*.<sup>7</sup> This new version of the notion of the Illuminati operates through acolytes in each country, to dominate economic and social policy. In Australia its membership reads as the Who's Who of Australian capitalism. Included are all the major banks, insurance companies and financial institutions, as well as British transnational corporations such as Rio Tinto, mega media moguls, the Australian Farmers' Federation, and influential conservative think-tanks such as the H.R. Nicholls Society, the Tasman Institute, and the Centre for Independent Studies.<sup>8</sup> The ultimate object of the international web of influential elites and individuals is the formation of one-world-government at the behest of London. In LaRouche speak, "London" and "Great Britain" are synonyms for the *Oligarchy*. Everything British is denounced as heinous. Queen Elizabeth II and her spouse are accused of being activists on behalf of the evil Jewish-British Commonwealth. Allegedly she holds the global franchise for two of the *Oligarchy's* pet perversions, drugs and pornography,<sup>9</sup> with the mission of perverting in the basest manner the moral fibre of nations. She is seen as the Queen of the Jews.<sup>10</sup>

The *Mont Pelerin* activism is not restricted to the private domain of the economy, but has cadres in highest echelons of the Federal parliament and the national bureaucracy. All Australian Prime Ministers, from Robert Hawke in 1983 to John Howard, are its dupes. Kim Beazley is not excluded.<sup>11</sup> They are all accused of leading Australia down the greasy pole to economic and social crisis. The *Oligarchy* demands that their decision-makers follow the "bottom line" of free market economics. This is manifest in current fire-sales of public assets and utilities, the deregulation of labor and capital markets, the allowance of predatory practices in transnational corporations, the export of manufacturing jobs overseas to places with far lower wage profiles, and the floating exchange rates leaving nations at the mercy of currency sharks. The upshot of all this is a total disruption of the livelihoods and accustomed lifestyles of ordinary people.

## The Antidote

LaRouche's antidote to this worldwide disaster is re-industrialization of the economy. It is predicated on the triumph of *Industrial Capital over the Money Capital of the Oligarchy*. This will be led by a transformed America, not the liberal democratic America of the present, which is in the control of the *Oligarchy*. Reflecting his one time flirtation with Trotskyism, the features of the LaRouche metamorphosis of America include a command economy, completely standardized work practices, centralized labor and capital markets, Everest-high tariffs, and fixed international exchange rates. In other words, an inversion of the ways of the *Oligarchy*. LaRouche chillingly explains:

...the really smart crowd operating from behind the curtains is no longer trying to save the present world financial system... [T]hey are burying it a little bit at a time to prepare their post-end-game scenarios.<sup>12</sup>

Ultimate victory cannot be achieved by one nation alone, even by the reconstructed America. All nations in concert have to consent to the LaRouche principle initiated by a *New Bretton Woods*. Just as the original Bretton Woods in 1944 developed a plan to restore Europe after the ravages of World War II, so a similar conference is imperative to redeem the world from an all-embracing economic crisis induced by the *Oligarchy*. Presumably each nation would implement simultaneously the LaRouche economic plan of domination, centralization and protectionism.<sup>13</sup> As he would have it:

...a "New Bretton Woods" system of tariff protection, fixed exchange rates and capital controls must replace the disastrous present "globalist" system, or the world will collapse into a genocidal New Dark Age. [I am] committed to building the LaRouchean political movement, in the United States and around the world, in order to bring the New Bretton Woods into being.<sup>14</sup>

Another irony here is that the original Bretton Woods Conference, established two major pillars of the current international financial

Rodney Goultman

system—the World Bank and the International Monetary Fund—which are both, according to LaRouche and hence the *CEC*, tools of the *Oligarchy*.

In a sense, the whole LaRouche scenario is a replay of the American War of Independence. It is up to an America enthused with his ideology and practices to defeat the machinations of the British-led *Oligarchy*. This contest between Good and Evil is not limited to economics, but has accompanying social, cultural and racial dimensions. The defeat of the *Oligarchy* with its money power will see arise a new human hierarchy, with a superhuman race at the pinnacle like the Philosopher-King in Plato's *Republic*. In a moral inversion of nomenclature, these new rulers would be called *Humanists* (King 1998:286-289).

It is doubtful whether this idiosyncratic paradigm was known to the thirty candidates—22 men and eight women—that *CEC* fielded in the Australian Federal Elections of 1998. Either their current candidates for forthcoming elections are being kept in ignorance, or they simply do not seem to care what it entails.<sup>15</sup> The principle theme running through the campaign rhetoric of the 1998 teams to a person was not in any way ideological as such, but expressed the harm and hurt of people who have seen, perhaps experienced, the ravages of post-industrialism and globalization in their own backyards.<sup>16</sup>

## **The Australian Connection**

One might ask why LaRouche should bother with Australia, a country which does not play a pivotal role in the international marketplace. Four reasons are suggested. As a nation suffering the scourge of globalization, deregulation and privatization, Australia no less than other places, is perceived as ripe for the LaRouche ideology and methodology. Future Australian governments, like past ones, are likely to be seduced by the *Oligarchy* into continuing its policies both domestically and internationally. If this does happen, there will be even greater anger, bewilderment and alienation, leaving opportunities available to LaRouche to exploit such reactions.

*A Pernicious Vision: Australia's Extreme Right*

A second aspect is LaRouche's belief that Australia is used by the *Oligarchy* as a land bridge into Asia-Pacific. His evidence is the increasing number of British firms interested in Asia-Pacific, firms that are establishing their headquarters in Australia. Australia is then a core regional battleground on which the LaRouche minion, *CEC*, should stand and fight the *Oligarchy*. As the *CEC* itself explains:

The rowing importance of Asia and of the countries around the Pacific means that Australia is much stronger for Britain as a bridge into the area of the world of growing importance. Reflecting this bridge into Asia an astonishing total of 130 companies, most of them British, have set up their Asia/Pacific headquarters in Australia...<sup>17</sup>

A third element has been the recent push in Australia to transform itself from a constitutional monarchy with the British monarch as its titular head into a fully fledged republic. The attempted break with the monarchy has a certain fascination for the LaRouche group. As the *CEC* expresses it:

Australia sends 35% of its offshore investment to Britain. British investment in Australia in the 1980s has grown enormously, while the increased colonization of Australia has been backed by a cultural and intelligence offensive: ASIS has an M16 officer attached to its headquarters in Canberra and other intelligence gathering organizations. Through Mont Pelerin Society connections, there has been a take-over of the political system.<sup>18</sup>

Finally, there is the lure of Australia's well organized Labor Movement that stirs the guru's old Leftist tendencies. He sees the proletariat as a launching pad for his revolution. The ordinary workers are deemed a most vulnerable population at the mercy of globalization, privatization and a deregulated labor market that has diminished the availability, nature, tenure, conditions and distribution of work. With this in mind, the *CEC* tactic is to denigrate the leaders of both the parliamentary and industrial wings of the Labor movement, charging them with being the servants of the *Oligarchy*, and therefore calling for their replacement by activists imbued with the values of "Old Labor." The *CEC* cites as the icons of "Old Labor"

Rodney Goultman

W.G. Spence, King O'Malley, Frank Anstey, J.T. Lang and John Curtin.<sup>19</sup> What these men have in common is that all in their own way in Australia's history snubbed the *Oligarchy*.

Essential in the eyes of the *CEC* in its push for "Old Labor" values is the creation of two institutions: a "Commonwealth National Credit Bank" to create all the credit necessary for national infrastructural development, and an "Interstate Commission" to prioritize this infrastructure, and set tariffs to protect Australian manufacture from overseas competition.<sup>20</sup>

## **Religio-cultural view**

LaRouche describes his cult as "Judeo-Christian-Platonic." Its exact religious position is somewhat ambiguous, but it seems to follow a "white Protestant" Christian line. On one hand he and his *CEC* assert the egalitarian position that all are created in the image of the Creator,<sup>21</sup> while on the other hand restricting inclusion. To LaRouche, Roman Catholicism is anathema, and he is reported to describe Italian-Americans as obsessed with images of the Virgin Mary, and Irish-Americans as priggish Catholics responsible for a "body-eroding orgy of fertility." The British are low life because they follow a Zionist philosophy which, he says, emphasizes the "sensual appetites and impulses of a racial group, making that racial group self-defined as moral likeness to a lower beast" (King 1998:288-290). Russians and Chinese are similarly abused (King 1998:290). The invocation of the name "Plato" is there to suggest that the LaRouche worldview is based on rational philosophic foundations. Despite its claim to care for all equally, the *CEC* promotes social hierarchy, and rejects—and despises—any group that does not match the LaRouchean cultural kind.

## **Present Aversions**

While the *CEC* declares a twelve-pronged fighting platform of popular issues,<sup>22</sup> among its immediate pet hates are multiculturalism, political correctness, notions of Aboriginal uniqueness and exclusivity over land, environmentalism, republicanism, and free trade

*A Pernicious Vision: Australia's Extreme Right*

economics. In common with other members of the extreme Right, the *CEC* has little time for the social ideology of multiculturalism that has gathered support amongst Australians since the early 1970s. It says:

[A]ll mankind are created equal, and are thus sovereign individuals under natural law. It follows, therefore, that the arguments of today's multiculturalists, that there are different races with different needs is a racist fraud...<sup>23</sup>

Particularly galling to the *CEC* is any hint of anti-vilification legislation to prevent the spread of race hatred. Such legislation establishes a political correctness which is designed to "silence community groups."<sup>24</sup> Hence it has lobbied vigorously, with some success, against the efforts of the Bracks Victorian Labor Government to pass its "Anti-Vilification and Religious Toleration Act." It argues on two platforms: freedom of speech, and a desire to prevent the national cohesiveness from disintegrating. In the same breath, however, the *CEC* argues that liberal democratic values are the sham perpetrated on the nation by the *Oligarchy* which would doubtless lead to the disestablishment of sovereign Australia.

The Aboriginal Question particularly upsets the *CEC*, and the group seeks to undermine the basis upon which the matter rests, that Aboriginals are Australia's original people, and what follows, such as Aboriginal Land Rights and claims for special treatment. Those who affirm such objects are toadies of the *Oligarchy*. Here, according to the *CEC*, is another example of the attempt to pit groups of Australians against each other. Apparently, it is the practice of the *Oligarchy* to adopt the tactic of divide and rule, in a strategy to undermine national unity and sovereignty. The *CEC* rejects Aboriginal uniqueness, and any claim to be compensated for cultural dispossession and genocide suffered since the arrival of Europeans in 1788. It does this by arguing that they were not Australia's first people. The evidence from which it draws sustenance is the "Bradshaw Rock Art of the Kimberleys" which purports to show other civilizations existed in Australia before the Aborigines. Moreover, when the Aborigines did arrive and colonize Australia, they did so, it is asserted, at the expense of the former dwellers. In other words, the Aboriginal people were involved in genocide and

Rodney Goultman

cultural dispossession not less than the latter-day Europeans.<sup>25</sup> Hence no grounds exist for their treatment different from non-Aboriginal Australians.

Anthropologists who do press the Aboriginal Land Rights cause are in the pay of the Anglo-Jewish conspiracy. If they were to achieve their goals, Australia would become Balkanized, and her mineral wealth would be tied up for later exploitation in secret deals between the Aborigines and British transnational corporations such as Rio Tinto.<sup>26</sup> Those Australian High Court judgments favouring land rights in the case of Mabo and Wik are based on dubious academic studies concocted by a collection of "communists, witch doctors, and Royals."

It's Prince Philip's racial plot to split Australia, that after several years of preparatory work by British-run and communist anthropologists the Royal family stepped in to run the land rights movement.<sup>27</sup>

Environmentalism is criticized in similar caustic tones. The movement is led by the Duke of Edinburgh and his global World Wide Fund for Nature, with the object of grabbing Australia's natural resources. Doing his dirty work are those described by the CEC as "the dregs of society and pagans."<sup>28</sup> The theme of sequestering resources is also part of the criticism made by CEC of Australia's military intervention in East Timor under the umbrella of the United Nations, another hated body. It was not about saving the East Timorese from further bloodshed and oppression by militias which were army-controlled and helped if not directed. Rather, it was concerned with entrapment and control of rich oil and gas deposits in the Timor Gap, and the break up of Indonesia into smaller hapless entities, both awaiting pickings by the *Oligarchy*. One prominent CEC organizer, Allen Douglas, has summed it up:

British Monarchy and the City of London are bent upon "blowing up" Russia, China, India and any other nation-state which might help construct the New Bretton Woods financial pattern proposed by American statesman Lyndon LaRouche... If the British oil wins East Timor, along with their present dominating role in the Caspian Sea region and

### *A Pernicious Vision: Australia's Extreme Right*

the North Sea, as well as Alaska and Nigeria, they will be in a commanding power position globally to dictate oil policy.<sup>29</sup>

One might have thought that because of the *CEC*'s pathological antipathy to the British Monarchy, it would have joined the Australian Republican Movement in its desire to have the national Constitutional referendum of 1999 change Australia from a constitutional monarchy to a republic. That did not happen because the republic model advocated did not meet its requirements.<sup>30</sup> What raised its ire was the leadership of the republican push, people such as Malcolm Turnbull, a merchant banker with Goldman Sachs, considered by the *CEC* a card carrying representative of the *Oligarchy*.<sup>31</sup> It thus all smelled of the British-Jewish conspiracy.

### **Antisemitism**

The *CEC* is careful to guard its tongue when it comes to Judaism and Jews per se. Nonetheless, it excoriates individual "Zionist Jews"<sup>32</sup> and organizations such as the B'nai B'rith Anti-Defamation League in the United States (hereafter ADL) and its Australian counterpart, the B'nai B'rith Anti-Defamation Commission (hereafter ADC).<sup>33</sup> In the United States, the ADL has been accused of having links to the FBI, funding white supremacist cells to vandalize synagogues, being associated with the Ku Klux Klan, and even being involved in the Masonic sacrifice of children. For his own strategic reasons, Lyndon has not been averse to befriending the antisemitic bigot Louis Farrakhan.<sup>34</sup> In Australia, the ADC is said to have bankrolled the gaoled Jack van Tongeren of the anti-Asian and antisemitic *Australia Nationalist Movement*, and to be implicated in the 1996 massacre of innocents by a deranged killer at Port Arthur in Tasmania.<sup>35</sup>

LaRouche estimates only one and a half million Jews died during World War II, and then only as a result of the Nazi policy of the application of "appropriate technology for the employment of inferior races."<sup>36</sup> Hitler and his regime were creations of the Jewish banking houses, the Rothschilds, the Warburgs, the Oppenheims, and of other financial interests in London.<sup>37</sup> "Jewish racketeers" were responsible for the Australian Broadcasting Commission's television



Rodney Gouttman

exposé of the secret entry of Nazis and their collaborators into Australia in the immediate years after World War II, with the aim of profiting from the Holocaust.

## Organization and Method

*CEC* goals are never left to chance or evolution, but are the product of extremely rigid and disciplined organization. Pseudo-psychological mind-control techniques, honed in the United States and backed with threats of violence, keep *CEC* recruits in line. Some are chosen for re-education courses in Leesburg. However there is also direct outreach. For example, LaRouche bodyguard, Herb Quinde, was dispatched to Melbourne to blacken the names of prominent members of the Jewish Community. The *CEC* has been accused of using dubious methods to raise substantial funds, including credit card fraud which has robbed some its members of the life savings.<sup>98</sup>

The principle conduits of propaganda for the *CEC*, apart from the Internet, are *The New Citizen*, the *Executive Intelligence Review* and the *Schiller Foundation* run by LaRouche's wife. *CEC* bureaucrats lobby politicians and government officials, often misrepresenting themselves as journalists. One operative even attempts to infiltrate Jewish organizations in a variety of disguises. Private detectives have been employed to "dig dirt" on certain Jewish leaders, a strategy described by former *CEC* activist Don Veitch as "stink bomb politics." There are letterbox drops, particularly in suburbs with a substantial Jewish population, while citizens are assailed in metropolitan streets to join the cause and buy *CEC* propaganda.

Small cadres of *CEC* workers exist in most Australian states. Only recently its secretary, Craig Isherwood, relocated from Coburg to Western Australia, to organise there, though the Coburg office remains. Anyone deemed not absolutely subservient to Lyndon LaRouche is purged.

## **Conclusion**

The current societal situation in Australia is fecund for *CEC* propaganda. There is a growing convergence of Right and Left critiques of globalization even if their rationales differ. Already their activists have been in each other's company agitating outside the World Economic Forum's Asia-Pacific Economic Summit in Melbourne on 11 September 2000.<sup>39</sup> The *CEC* has attempted to infiltrate the Labor Movement and has been rejected by its leaders.<sup>40</sup> With the help of the small dissident Municipal Employees' Union of Western Australia, it formed the Curtin Labor Alliance to contest the Western Australian State elections in 2001. The invocation of John Curtin, a locally born World War II Australian Labor Prime Minister, was an attempt to attract the working class vote of those disapproving of the current crop of Labor leaders. This is also beginning a marriage of convenience between the racist League and Arab groups, based on their opposition to and shared hatred of the state of Israel.<sup>41</sup> No doubt, in his inimitable way, LaRouche will harness his wagon to the anti-Zionist cause irrespective of the *CEC* claim

...that it has been active in attempting to secure a just Middle East settlement based on large scale economic development of the area in the mutual interests of Israel and an emerging Palestinian state...<sup>42</sup>

LaRouche is a friend neither of the Jews nor of the Jewish State.

While one ought to be cautious not to exaggerate the influence of *CEC*, it would be equally foolish to dismiss it as an eccentric, flash-in-the-pan Rightwing fringe group which promotes quirky economic ideas, anti-social and politically destabilizing notions and a thoroughly racist platform. The *CEC*, as with the extreme Rightwing family, thrives on the existential misery of people. The effects of globalization along with its associated free market concepts, aided and abetted by the electronic revolution, continue to sweep aside those cultural and social verities which have traditionally anchored communities. In increasing numbers, losers in this new and

Rodney Goultman

confronting environment could well be attracted by the simplistic and populist messages of the *CEC*. What is certain, this pernicious cult-like organization is unlikely to disappear

## Endnotes

<sup>1</sup> *On Target*, 26 February 1999.

<sup>2</sup> *On Target*, 10 October 1999.

<sup>3</sup> *The Citizen*, September 1989.

<sup>4</sup> *New Citizen*, November 1991-January 1992.

<sup>5</sup> *New Citizen*, September-November 1992.

<sup>6</sup> A full exposé of LaRouche's worldview, motivations and practices is to be found in King (1998).

<sup>7</sup> *Stop—The British Crown Plot to Crush Australia's Unions*. *CEC* Publication: June 1998:7.

<sup>8</sup> *Stop—The British Crown Plot*:48-49.

<sup>9</sup> *Stop—The British Crown Plot*:282-283.

<sup>10</sup> *Stop—The British Crown Plot*:280.

<sup>11</sup> *Stop—The British Crown Plot*:3-5.

<sup>12</sup> *CEC* Website <http://www.cecaust.com.au/>

<sup>13</sup> *Global Financial Cash Drives East Timor Crisis*. *CEC* Publication: September 1999:35.

<sup>14</sup> *Global Financial Cash*:35.

<sup>15</sup> *The Age*, 19 June 2001. The *CEC* candidate for the July bi-election for the Federal seat of Aston rejects his parents' claim that he has been brainwashed, and denies that his organization is racist.

<sup>16</sup> *Stop—The British Crown Plot*:28-29.

<sup>17</sup> *Stop—The British Crown Plot, Target Australia*:25-27.

<sup>18</sup> *Target Australia*:25-27.

<sup>19</sup> *Target Australia*:59-69. Spence took on the British colonial establishment in the late nineteenth century as a union organizer and later a Labor Party politician. O'Malley established Australia's Commonwealth Bank. Anstey was a vociferous opponent of the British-Jewish "Money Power." Lang rejected the return of interest on

*A Pernicious Vision: Australia's Extreme Right*

borrowed funds from Great Britain in the early years of the Great Depression. Curtin brought back troops from the Middle East to defend the Australian hinterland in defiance of Winston Churchill. Some of these men articulated strong antisemitic sentiments. For an overall view of Left antisemitism see Goultman (1991:23-29).

<sup>20</sup> "History and Philosophy of Citizens Electoral Council." *CEC* Website <http://www.cecaust.com.au/>

<sup>21</sup> *CEC* information pamphlet "What is the *CEC*?" This is given to prospective members.

<sup>22</sup> *The New Citizen*, May 2001:17. The twelve issues are: the establishment of a New Bretton Woods and international monetary system; the establishment of a National Bank and State Banks; the repeal of all Federal and State anti-union legislation; an immediate halt to privatization of Commonwealth and State assets and regulatory bodies; an immediate moratorium on foreclosures of family farms; the immediate elimination of the disastrous National Competitive Policy; the elimination of the Goods and Services Tax; the reassertion of national control over Australia's oil and gas and huge mineral resources; a dramatic upgrading of Federal and State infrastructure; a real war on drugs; the establishment of generous immigration quota. See also "What is the *CEC*?" cited above.

<sup>23</sup> "What is the *CEC*?"

<sup>24</sup> *New Citizen*, April 1994.

<sup>25</sup> *New Citizen*, August 1999:9-17.

<sup>26</sup> *New Citizen*, August 1999:18-23.

<sup>27</sup> *New Citizen*, August 1999:18-23.

<sup>28</sup> *New Citizen*, August 1999:9. This article, "Royal Apes vs Mankind" is not authored. See also *Stop—The British Crown Plot*:78.

<sup>29</sup> *Global Financial Cash Drives East Timor Crisis*, (*CEC* Publication) September 1999:8-11.

<sup>30</sup> *CEC* Website <http://www.cecaust.com.au/>

<sup>31</sup> *Stop—The British Crown Plot*:82.

<sup>32</sup> People such as Isi and Mark Leibler, Michael Danby, Edgar Bronfman, the Smorgon family, George Soros, Martin Indyk, Henry Kissinger, Paul Gardiner, the Rothschild family.

<sup>33</sup> *Executive Intelligence Review*, press release, 26 May 1993; *ADL Thugs Threaten International Civil Rights Conference in Melbourne*,

Rodney Goultman

*Australia*; 16-page booklet, distributed by the CEC, 26 July 1993: "Is the Anti-Defamation Commission spying on you?"

<sup>34</sup> King (1998:369-376) compares official attitudes to both LaRouche and Farrakhan.

<sup>35</sup> *The Age*, 8 August 1998.

<sup>36</sup> Cited in *The LaRouche Political Cult: Packaging Extreme. A Case Study*. Anti-Defamation League of B'nai B'rith (1996):7.

<sup>37</sup> *The LaRouche Political Cult*:7.

<sup>38</sup> See Veitch (1996). This work is by a disillusioned former insider, who reveals the LaRouche ideology and psychological control methods. Veitch continues to be an activist of the racist and antisemitic Right.

<sup>39</sup> Ted Patterson, "The other side of the coin" in *On Target*, 36(37).

<sup>40</sup> *The New Citizen*, May 2001:4.

<sup>41</sup> *On Target*, 20 October 2000. Dr Mahmoud Ajjawi spoke to the Sydney Conservative Speakers' Club, a *League* front, on 31 October 2000. Dr Ajjawi, who claims he was born in Palestine in 1946, is the Secretary of the Australia/Palestine Cultural League. It has been reported that Ajjawi said that Jews owned 25% of the banks in the USA, and that they seek to exert control over the American Government. He suggests *The Protocols of the Elders of Zion* could be based on truth. Accompanying Ajjawi was his colleague in the Australian/Palestine Cultural League, Mr Abdul Abbas.

<sup>42</sup> "What is the CEC?"

## Bibliography

### Primary Sources

*Executive Intelligence Review*

*On Target*

*The Citizen*

*The New Citizen*

*A Pernicious Vision: Australia's Extreme Right*

**Secondary Sources**

- Campbell, A.A. 1978. *The Australian League of Rights: A Study in Political Externism and Subversion*. Collingwood: Outback Press.
- Douglas, C.H. *Social Credit*. Vancouver: Institute of Economic Democracy.
- Gouttman, R. 1991. "The Australian Left and the Jews." *Without Prejudice* 2(Feb):23-29.
- King, Dennis. 1998. *Lyndon LaRouche and the New American Fascism*. New York: Doubleday.
- Spoonley, P. 1987. *The Politics of Nostalgia: Racism and the Extreme Right in New Zealand*. Palmerston North: Dunmore Press.
- Veitch, D. 1996. *Beyond Common Sense Psycho-Politics in Australia*. Melbourne: David Syme College.



B'nai B'rith

**Anti-Defamation Commission Inc.**

Australia / New Zealand

The B'nai B'rith Anti-Defamation Commission Inc. is a national organisation dedicated to researching and combating all forms of racism.  
P.O. Box 450, Caulfield South, Victoria 3162, Australia.  
Telephone (03) 9527 1228, fax (03) 9525 9127, e-mail antidef@ozemail.com.au

# BRIEFING PAPER

No. 2, February 2001

## THE LaROUCHE CULT: THE CITIZENS ELECTORAL COUNCIL

*Since the late 1980s, a branch of an American fascist political cult has been operating in Australia. Headquartered in Melbourne, the "Citizens Electoral Council" (CEC) functions strictly according to the dictates of Virginia-based cult leader Lyndon LaRouche, a 78-year old who has served time in prison for fraud and tax evasion.*

*Lyndon LaRouche believes in an impending world crisis engineered by an alleged cabal of Jewish bankers based in Britain. He has established a worldwide movement dedicated to the advancement of this idea through the use of varied misinformation, fundraising, and political campaigns. LaRouche's racist conspiracies have been adapted by the CEC with local targets including Aborigines, Jews, environmentalists and the Australian Government.*

*The CEC plays a small but important part in the global LaRouche movement and should not be dismissed as a relatively insignificant or ineffectual vestige of the racist fringe. For, by deceptively promoting itself as a legitimate grassroots labour movement, the CEC has been able to target trade unionists and politicians, as well as gain recruits and raise millions of dollars by preying on elderly and educationally disempowered Australians.*

*This Briefing Paper seeks to shed light on a group that has undoubtedly become one of the best organised and financed, as well as one of the most pernicious, racist groups in Australia.*



### WHO IS LYNDON LaROUCHE?

Born in Rochester in 1922, Lyndon LaRouche always saw himself as a leader. Always on the fringe, he was originally a Marxist before shifting to the far-right, championing the freedoms of the "industrial capitalists" over those of the proletariat. Dennis King, author of *Lyndon LaRouche and the New American Fascism*, has noted that LaRouche's shift from left to right mirrors the pattern of Benito Mussolini, who was editor of a socialist newspaper before founding Italy's fascist party.

## LaRouche in his own words

**Chinese** are a "paranoid" people, sharing, with "lower forms of animal life", a "fundamental distinction from actually human personalities".

**Italians** are intellectually impotent and obsessed with churches, whorehouses and "images of the Virgin Mary".

**Irish-Americans** represent **Catholic** "ethnic piggishness" and are responsible for a "hideous mind-and-body-eroding orgy of fertility".

**Tribal peoples**, such as those in the Amazon, have a "likeness to a lower beast".

**Native Americans:** "Was it... correct for the American branch of European humanist culture to absorb the territories occupied by a miserable, relatively bestial culture of indigenous Americans? Absolutely."

**The Bahai faith:** "'Faith' is scarcely the proper term for the wicked cult".

**The Jesuits:** "The Society of Jesus has been predominately evil throughout its history".

**Homosexuals:** "Those who lynch homosexuals will be remembered as the only force which acted to save the human species from extinction". LaRouche believes that child molesters, Satanists and communists control the gay rights movement and that wealthy Jews encourage homosexuality as a way of undermining western civilisation.

In the 1970s, LaRouche skilfully developed a worldwide movement to advance his racist agenda, which included, as part of his campaign for legitimacy, repeated attempts to receive the Democratic Party's nomination as US President. While engaged in intimidating and exposing the alleged crimes of prominent Jews, the focus of the movement remains the raising of millions of dollars by misrepresentation and deception, to fund not only LaRouche's presidential campaigns and the movement as a whole, but also his and his wife Helga's grandiose lifestyle.

This fundraising led to the conviction of LaRouche and six of his associates in December 1988 for conspiracy and mail fraud in the movement's solicitation of \$34 million in loans since 1983. Predictably, LaRouche claimed that he was the victim of a plot by British intelligence. He was sentenced to 15 years in prison, but continued to direct his movement from behind bars before being paroled in January 1994. However, his time in prison only served to strengthen his racist and anti-democratic views and his movement is as active as ever.

### LaRouche's racist ideology

LaRouche posits his own brand of antisemitic conspiracy, where the world is on the verge of a financial crisis engineered by the "Oligarchy", an alleged cabal of Jewish bankers and usurers, who try to subdue the world through the use of speculative capital. As London is the supposed home of the Oligarchy, LaRouche hates all things British. The City of London (where the Jewish financiers are allegedly based), Great Britain and the monarchy are euphemisms for the Oligarchy, with the Queen herself as supposedly the head of the Oligarchy's international drug cartel. The LaRouchian conspiracy is promoted in Australia by the CEC, as discussed below.

The "Grand Design for Humanity" is LaRouche's vision for saving civilisation, which sees the creation of a dictatorship with LaRouche at the helm, dedicated to the eradication of all facets of the Oligarchy. LaRouche contends that popular support for this dictatorship would only be forthcoming if he could prove that a major crisis is looming, which could be solved with the rise of a new charismatic and competent leader (i.e. LaRouche himself). The impending crisis idea, as utilised by LaRouche propagandists, usually takes the form of debtor countries reneging on their loans to the International Monetary Fund (a supposed Oligarchy front), thereby triggering a global depression. As Asian markets collapsed in the late 1990s, LaRouche operatives, including those in Australia, cited this as a vindication of their leader's prophecies.

As the supposed progenitors of the Oligarchy, the Jews are LaRouche's primary target. Amongst a range of antisemitic canards, LaRouche has claimed that *The Protocols of the Learned Elders of Zion* (the notorious Czarist forgery depicting a plot by



Jewry to take over the world) contains a "hard kernel of truth".<sup>ii</sup> Engaging also in Holocaust-denial, LaRouche contends that the Nazis "only" killed about a million and a half Jews and "Adolf Hitler was put into power largely on the initiative of the Rothschilds, Warburgs and Oppenheimers, among other Jewish and non-Jewish financial interests centred in the City of London".<sup>iii</sup>

However, as part of a broader package of racist hate, LaRouche vilifies not only Jews but also other groups (see box above).<sup>iv</sup>

### THE CITIZENS ELECTORAL COUNCIL

In the 1980s, the Citizens Electoral Council, a putative grassroots organisation, was established in Queensland amid a background of rural economic hardship. However, by 1989 the CEC leadership had come under the influence of the US LaRouche cult, which had long targeted Australia as part of its efforts at creating an international movement. In 1992, the CEC moved from Queensland to the Melbourne suburb of Coburg to be closer to a large Jewish population, enabling its direct activism against the Oligarchy.<sup>v</sup> In 1993 and 1994, the national office had a full-time staff of between 15 and 20 workers.<sup>vi</sup>

The CEC is led by National Secretary Craig Isherwood, a 40-year old farmer from Queensland who is currently directing the movement's activities in Western Australia. One of the primary CEC activists in the Melbourne headquarters is National Executive member Robert Barwick, the Australian correspondent for LaRouche's American publications. The work of the CEC is closely supervised by US LaRouche official Allen Douglas who, in the mid-1980s, was politically active in New Zealand where his exploits led to the collapse of the New Zealand LaRouche movement and a threatened lawsuit has apparently prevented his return there. Douglas has been in effective control of the CEC since 1993, supervising a program of what former CEC staffer Donald Veitch terms "agitation and propaganda (agit-prop), and outreach provocations".<sup>vii</sup>

### LaRouche's Australian targets

In accordance with LaRouche ideology, the CEC targets all those in Australia who are deemed to be the Oligarchy or its agents:

1. **Aborigines:** The CEC's denial and denigration of Aboriginal history, culture, reconciliation, and land rights is outlined in its December 1997 publication, "Aboriginal 'land rights': Prince Philip's racist plot to splinter Australia".

The group describes Aboriginal culture as "brutal" and comparable to the "ritual torture and cannibalism of the Aztecs". Like most racist bodies, the CEC believes that the Aborigines were not Australia's original people, thereby undermining their political and socio-economic claims. In addition, Aboriginal land rights, were allegedly "cooked up by Prince Philip and his World Wide Fund for Nature... on behalf of the international financial oligarchy which he heads, in order to stop economic development, to splinter nation-states, and to grab control of precious raw materials".<sup>viii</sup> Hence, "Anyone who still babbles about 'land rights' or '50,000 years of Dreamtime', is... a witting stooge of the Queen's minerals cartel, led by Rio Tinto", and the Mabo case was a "fraud", the result of "decades of scheming by anthropologists and communists in the service of British intelligence, who wanted to split apart our nation".<sup>ix</sup>



2. **The Australian Government and other "Mont Pelerin front groups":** The Mont Pelerin Society is supposedly a covert subvertive group founded in 1947 in a chalet on the slopes of Mt Pelerin in Switzerland by some of the leading families of the European Oligarchy. Desiring free trade and the elimination of the nation state, the Society purportedly moved from Switzerland to London from where it has become "the chief economic warfare unit of the British Crown".

The CEC claims that the Federal Government and the Kennett Government in Victoria are really Mont Pelerin's Australian "front groups", as are several thinktanks and NGOs, including the Institute for Public Affairs, the Tasman Institute and Centre for Independent Studies. Prominent Australians purportedly associated with the Mont Pelerin Society include Peter Costello, Dame Leonie Kramer, Paddy McGuinness, John Hyde, Hugh Morgan, and Kevan Gosper (see chart on page 8).<sup>x</sup> Thus, rather than acting in the interests of Australia, the policies of Government and NGOs are allegedly in accordance with the dictates of the Mont Pelerin Society and the British Crown.

3. **Environmentalists:** The CEC believes that the Oligarchy, particularly Prince Philip and his World Wide Fund for Nature, is manipulating the environmental lobby in Australia and abroad, as a way of obtaining raw materials for the Oligarchy's mining interests, especially the mining company Rio Tinto, which is allegedly controlled by the Queen. It is supposedly for this reason that Prince Philip established the Australian Conservation Foundation in 1963, which allegedly remains under the control of the Queen's Rio Tinto, which also finances other environmental bodies such as Earthwatch, the Australian Heritage Commission, and Greening Australia, as a way of controlling mineral resources (see chart on page 8).<sup>xi</sup>
4. **Australian Jewry:** In the tradition of LaRouche, the CEC seeks to demonise specific well-known Jews, hoping that all Jews will thereby be portrayed in a negative light. A favourite CEC target is the prominent Jewish Leibler family in Melbourne, who supposedly issued the orders for the Waco siege.<sup>xii</sup>

In order to find "proof" of the Oligarchy's activities, the CEC has systematically monitored and spied on Australian Jewish leaders. Operatives are known to have used sophisticated surveillance equipment and to have attended Jewish community meetings disguised as students. The CEC files reports with LaRouche headquarters in the US and the information gathered is used by the group to defame their targets, particularly in their publications, such as *The New Citizen*. Non-Jewish organisations have also been targeted in this way, including attempts by the CEC to spy on left-wing organisations and human rights bodies.

### CEC activities Australia-wide

#### 1. Building a mass movement

The CEC has actively set about winning the support of the public. Through a recruitment drive known as "Force 100", the CEC has set up stalls nationwide to sell LaRouche literature and CEC memberships. Like the US LaRouche movement, the CEC attempts to recruit members of the public by purporting to address seemingly legitimate economic and political concerns, but does so in a racist conspiratorial light. Former CEC staffer Don Veitch has stated: "People are attracted to the CEC-LaRouche organisation through an initial 'soft' approach: the ideas of the Golden Renaissance, music, geometry, dirigist economics, 'saving Australia' and the like".<sup>xiii</sup>

## Entering the cult

"They inquired into my relationship with my mother. That was pretty much standard procedure. It was an interrogation. The whole aim was to create a new person, making your past totally irrelevant and giving you a new personality. No matter what you said it was your mother's fault. It was pretty hideous stuff. Many people broke down and cried."

- Alex Rotaru, a former CEC intelligence officer, on the cult's indoctrination procedure.

"They would tell you there was something wrong with your mind if you are not pulling huge dollars in."

- Julie Warner, who blamed CEC brainwashing for bringing her close to suicide.

"They are a horrible bunch of people. When I first flew to Melbourne, I could only talk to her sitting on the fence outside (the CEC office)."

- Queensland farmer Joe Vella who was prevented from seeing his wife after she joined the CEC.

From Martin Daly's report, "Families fight back", *The Age*, 30 January 1996.

Each new recruit is forced to undergo "deprogramming sessions" to attain mindless conformity to the cause. Former CEC staffer Donald Veitch has categorically stated: "The mind control operations commenced by LaRouche in the USA in the mid-1970s are still being practised today within his movement in Australia".<sup>xiv</sup>

The LaRouchian cult-style ego-stripping mind-control techniques involve recruits being probed for sexual peccadilloes, especially their sexual relationship with their mother.<sup>xv</sup> The "Witch Mother" or her surrogate is blamed for a recruit's neuroses and is hunted down for exorcism: by a recruit denouncing the "Witch Mother", recruiting his wife to the cause, or leaving his wife and family, he will be declared "unblocked", "potent" and a "beautiful" person.<sup>xvi</sup> There have been several documented cases of recruits severing ties with their families as a result of the ego-stripping sessions.<sup>xvii</sup> National Secretary Craig Isherwood also apparently uses the techniques to unmask "threats" from within the CEC and then devises strategies to counter them, thereby promoting himself as the organisation's "dragon slayer".<sup>xviii</sup>

## 2. Raising funds for LaRouche

Despite LaRouche's imprisonment for fraud and tax evasion, his movement continues to raise millions of dollars worldwide by misrepresentation and deception. CEC staffers are exploited by the cult, often working in a "boiler room" atmosphere to solicit funds over the phone. The financially and educationally disempowered and weak are targeted in the belief that the potential combination of fragility, loneliness and a final search for meaning make them susceptible to exploitation. Donors are assured that it is of no consequence if one's credit card is overdrawn, because the entire financial system is about to collapse anyway and the debts won't need to be repaid.

During the 1990s, the CEC netted about \$3 million in Australia, more than the National Party and the Democrats. In its annual return to the Australian Electoral Commission in February 1999, the CEC says that it secured donations of more than \$1 million.<sup>xix</sup>

Allen Douglas has control over the disposal of all funds raised in Australia, which are spent on:

- i. Trips to the Leesburg headquarters for re-education and training for Australian cadres and potential recruits. (LaRouche headquarters in Leesburg apparently considers Australia as an offal from the British Empire and its inhabitants "head cases". Therefore, CEC cadres are frequently flown to the US for extensive psychoanalysis and training.)<sup>xx</sup>
- ii. International conference calls to maintain immediate and direct American control over the Australian operations.
- iii. LaRouche's public relations efforts.<sup>xxi</sup>

### 3. Targeting politicians

The CEC has inundated politicians with its lobbying documents, especially, "Sovereign Australia II: the legislative program to save our nation". Former Federal Liberal MP Ken Aldred came under the sway of CEC propaganda, promoting several CEC conspiracies in parliament, such as his claim in 1995 that Michael Costello, the then head of the Department of Foreign Affairs and Trade, had colluded with Jewish leaders to courier drug money to Australia (see below). In early 1999, forged correspondence was circulated by Aldred alleging that three Australian prime ministers were involved in a conspiracy to betray Australia to Indonesia.<sup>xxii</sup>



CEC activists are also known to have posed as government officials to obtain interviews for their paper, *The New Citizen*, and CEC "journalists" have been sent to pose provocative questions to politicians at press conferences and other meetings.

### 4. Overtures to trade unions

The CEC's overtures towards trade unions are based on the notion that the industrial capitalists (i.e. labour leaders) need to become the junior partners in LaRouche's vision for saving civilisation from the Oligarchy, the "Grand Design for Humanity". The CEC seeks to make converts among unionists by pretending to be interested in trade union concerns, which are of course explained within a LaRouchian framework, and the CEC has proudly proclaimed that all the unionists' troubles stem from the Oligarchy's Mont Pelerin Society and the mining company Rio Tinto, who are "leading the charge to crush the unions in this country".<sup>xxiii</sup>



Periods of industrial strife are particularly ripe times for the CEC to target unionists. For example, during the waterfront dispute in 1998, the CEC set up stalls and distributed its literature on the Melbourne docks. Entitled, "Australian Dossier War on the Docks", the material claimed that the dispute was part of an international conspiracy.

In early 2000, the CEC joined forces with the Municipal Employees Union of Western Australia, a maverick union of blue-collar workers, to form the "Curtin Labor Alliance" political party. It is likely that most members of the Municipal Employees Union are unaware of the CEC's racist conspiratorial underpinnings, for the Party platform addresses seemingly legitimate economic and labour issues, including a call for a "New Bretton Woods" (a LaRouchian concept). At the launch of the Alliance in Perth in April 2000, the guest speakers were Jeffrey and Michele Steinberg from the US, who are senior aides to Lyndon LaRouche. Jeffrey is also the director of counterintelligence for LaRouche's American operation. National Secretary Craig Isherwood and Labour Co-ordinator Andrew Fox both maintain a presence in Perth and are co-ordinating the CEC's targeting of trade unions in the state.

In 1993, Peter Holding, an official of the Australasian Meat Industry Employees' Union in Melbourne, addressed a meeting of the Trades Hall Council in Melbourne, and warned of the fascist ideology of the LaRouche movement and its backing of the CEC, which he described as "a dangerous and very well resourced movement". He called for "uncompromising solidarity with the civil rights of those whom these right-wing groups seek to scapegoat, the Jewish community, the environmental movement, women and the homosexual community". Indeed, trade unions

should be wary of any overtures by the CEC, whose deceptive labour-orientated agenda is a cover for an avowedly racist ideology.

## CONCLUSION

Like all racist groups in Australia, the CEC champions the dismemberment of our multi-ethnic society. For this reason alone, the group should be condemned by all who advocate a tolerant and diverse Australia. However, unlike most other racist groups in this country, the CEC is a national, cohesive operation with significant funding and outreach capabilities. With the backing of the LaRouche movement in the US, and its notorious strategies of cult control and exploitation, the CEC has been able to manipulate Australia's political processes, and play on legitimate economic discontent to garner support amongst trade unionists and the public.

The CEC is never likely to have a significant electoral impact, though the group measures its political success not by the number of candidates elected, but rather by the amount of campaign contributions obtained from gullible members of the public. The CEC also uses the political processes as a way of reaching out to trade unionists, as evidenced by the "Curtin Labor Alliance", the party established in 2000 by the CEC and the Municipal Employees Union of Western Australia.

Perhaps it is the economic ploy utilised by the cult which constitutes the greatest threat. The economic statements and predictions of LaRouche are selectively quoted by the CEC when targeting politicians, trade unionists or the public. The CEC claims it has had some success at signing up new members and distributing its publications as part of its "Force 100" project, which seeks to build a mass movement. Members of the public who are confronted by CEC activists are not told of the group's racist underpinnings, but are instead asked, "Do you care about the economy?", and are given a lesson on how LaRouchian economics can save the world.

This deceptive approach makes it all the more necessary for the wider community to be cognisant of the racist, antisemitic, and anti-democratic agenda behind the CEC.

Copyright © February 2001, B'nai B'rith Anti-Defamation Commission Inc.

<sup>i</sup> NBC *First Camera* program, 4 March, 1984.

<sup>ii</sup> Quoted in King, Dennis, *Lyndon LaRouche and the New American Fascism*, 1989, p.275.

<sup>iii</sup> Quoted in *The LaRouche Political Cult: Packaging Extremism - A Case Study*, ADL Special Report, 1986, p.7.

<sup>iv</sup> See King, Ch.30.

<sup>v</sup> Kapel, Michael, "Special Investigation: Inside the LaRouche Movement", *Australia-Israel Review*, 1-15 July 1996, p.4.

<sup>vi</sup> Veitch, Don, *Beyond Common Sense - Psycho-Politics in Australia*, 1996, p.7.

<sup>vii</sup> Veitch, pp.40-2.

<sup>viii</sup> Douglas, Allen and Helsop, Kelvin, "The real history of Australia: '50,000 Years of Dreamtime'? or, Transoceanic Maritime Cultures", *The New Citizen*, May/June 1999, p.11.

<sup>ix</sup> "Fraud of 'land rights' demolished", *The New Citizen*, August-October 1999, p.1.

<sup>x</sup> CEC booklet, *Australia's health care 'reforms': A Nuremberg crime against humanity*, February 1998.

<sup>xi</sup> CEC booklet, *Stop the British Crown plot to crush Australia's unions*, June 1998.

<sup>xii</sup> Kapel, p.5.

<sup>xiii</sup> Veitch, p.53

<sup>xiv</sup> Veitch, p.33

<sup>xv</sup> Veitch, p.48

<sup>xvi</sup> Veitch, p.89.

<sup>xvii</sup> See "LaRouche profit and lies", ABC *Four Corners* program, 24 June, 1996.

<sup>xviii</sup> Veitch, p.44

<sup>xix</sup> See Seccombe, Mike, "Conspiracies are a nice little earner", *Sydney Morning Herald*, 3 February 1999.

<sup>xx</sup> Veitch, p.50

<sup>xxi</sup> Veitch, p.42

<sup>xxii</sup> Moor, Keith, "The big lie", *Herald Sun*, 15 March 1999, p.1.

<sup>xxiii</sup> Douglas, Allen, "The Queen is Coming!", *The New Citizen*, March-June 2000, p.13

Chart of the various Australian "front groups" and prominent Australians purportedly associated with the conspiratorial Mont Pelerin Society. From the CEC booklet, *Australia's health care 'reforms': A Nuremberg crime against humanity*, February 1998.

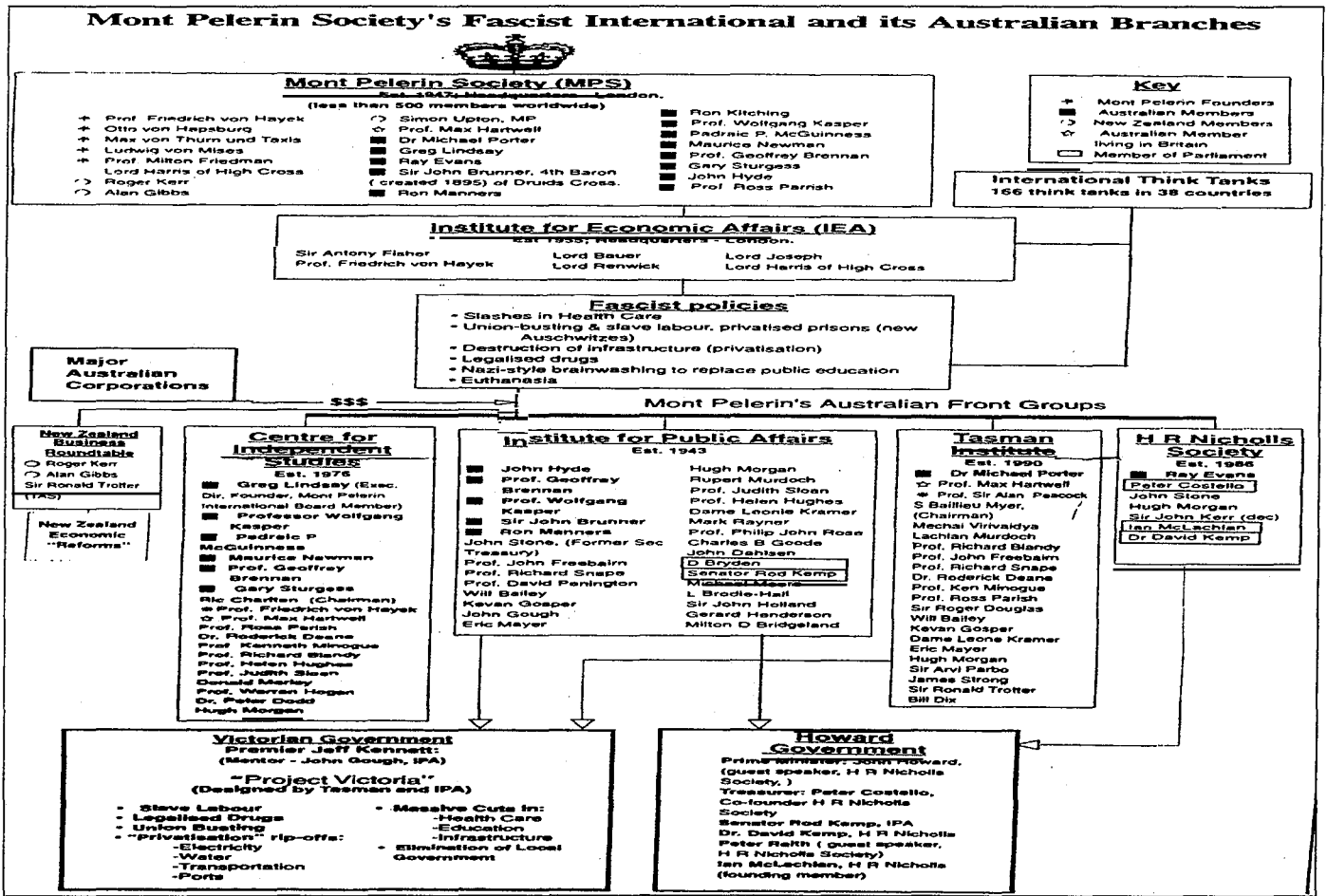
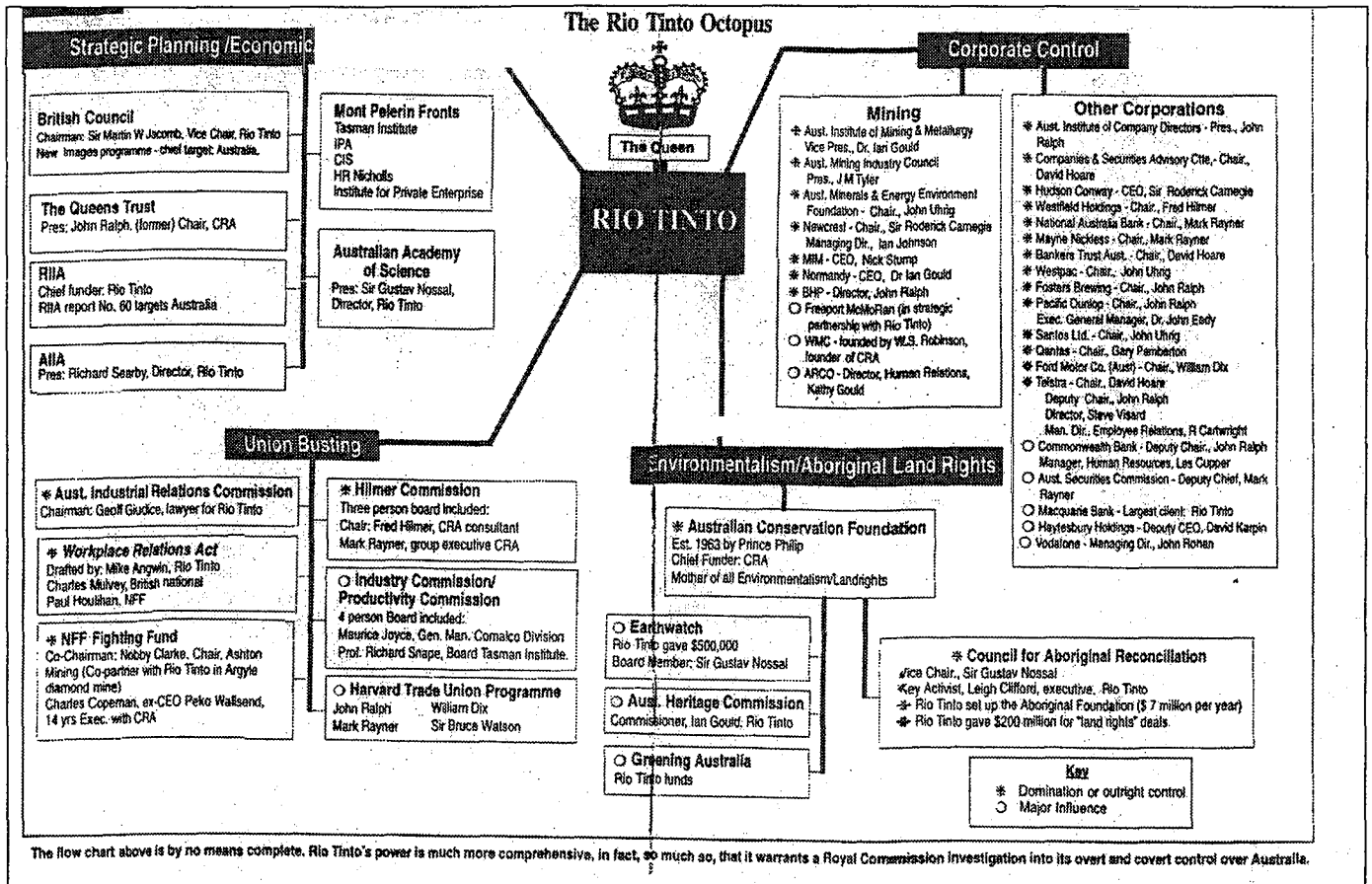


Chart depicting the alleged control that mining company Rio Tinto and the Queen exert over various environmental and Aboriginal bodies. From the CEC booklet, *Stop the British Crown plot to crush Australia's unions*, June 1998.





# Political Party Annual Return

1999/2000

Please refer to the *Funding and Disclosure Handbook for Political Parties* when completing this form.  
A copy of this Handbook can be viewed at the Australian Electoral Commission's website at [www.aec.gov.au](http://www.aec.gov.au)

## Party Details

Name

CITIZENS ELECTORAL COUNCIL OF AUSTRALIA

Postal Address

P.O. BOX 376

COBURG VICTORIA

Postcode 3058

Telephone number (BH)

(03) 93540544

Facsimile number

(03) 9354 0166

## Agent Details

Name

CRAIG ISHERWOOD

Postal Address

P.O. BOX 376

COBURG VIC

Postcode 3058

Telephone number (BH)

(03) 93540544

Facsimile number

(03) 9354 0166

I certify that the information contained in this return and its attachments is true and complete.

Agent's Signature

Date

17 / 10 / 2000

**The due date for lodging this return is 20 October, 16 weeks after the end of the financial year.**

Enquiries and returns should be addressed to:

THE RETURNS OFFICER  
FUNDING AND DISCLOSURE SECTION  
AUSTRALIAN ELECTORAL COMMISSION  
PO BOX E201  
KINGSTON ACT 2604  
Telephone: (02) 6271 4552 (02) 6271 4411

|                  |                      |
|------------------|----------------------|
| Office Use Only  | <b>RECEIVED</b>      |
| Date Received:   | 19 OCT 2000 <i>M</i> |
| Registration No: | P0057                |





# RECEIPTS

| Name                 | Address   | Amount Received |
|----------------------|---|-----------------|
| Mr Ken Badenoch      | P O Box 1411 Mt Gambier SA 5290   | \$31,555.00     |
| Mr Eryvn Behn        | RMB Saddleworth SA 5413   | \$3,350.00      |
| Mr Alex Bird         | P O Box 87 Scone NSW 2337   | \$4,420.20      |
| Mr Graham Bourke     | Lot 10 Stanley Pde Highfield Qld 4352   | \$7,475.00      |
| Mr Lynton Bowen      | PO Box 379 Northam WA 6401  | \$7,845.00      |
| Mr John Colley       | 5 Gladstone St Saint James WA 6102  | \$5,550.00      |
| Mr & Mrs K Collins   | 1110 Oxford Falls Road Oxford Falls NSW 2100                                  | \$10,350.00     |
| Mr Albert Evans      | RMB 318 Moruya NSW 2537   | \$6,335.00      |
| Mr John D Farmer     | P.O. Box 376 Coburg Vic 3058  | \$6,500.00      |
| Mrs Joyce Filsell    | P O Box 26 Forest Range SA 5139   | \$6,540.00      |
| Mr Peter Flynn       | P O Box 552 Humpty Doo NT 0836  | \$5,637.80      |
| Mr Henry Ray Gillham | PO Box 77 Glenden Qld 4742  | \$45,285.00     |
| Mr John Grocke       | Bonlea Banana Qld 4702  | \$4,106.40      |
| Mr Serge Harris      | P O Box 364 Mount Barker WA 6324  | \$5,150.00      |
| Mrs Margaret Haylock | Flat 8 No 72 Sholl Street Mandurah WA 6210                                    | \$4,475.60      |
| Mr Colin B Horne     | P O Box 376 Coburg Vic 3058   | \$16,244.00     |
| Mrs Gwenda M Hull    | Unit 135 Cherry Tree Grove Retirement<br>67-81 Maroondah Hwy Croydon Vic 3136 | \$4,705.00      |
| Mr Ronald J Langdon  | 159 Rogham Road Taigum Qld 4018   | \$5,035.00      |
| Mrs Ann Lawler       | 71 Gardiner St Rutherford NSW 2320  | \$19,349.70     |
| Mr Brian McCarthy    | PO BOX 74 Pinjarra WA 6208  | \$6,700.05      |
| Mrs Jean McClung     | 9 Ashgrove Place Bundanoon NSW 2578   | \$14,175.05     |
| Mr Ron McLean        | PO Box 65 Beverley WA 6304  | \$7,184.00      |
| Mr Charles Morrison  | Flat 15, 327 Orrong Rd Balaclava Vic 3183                                     | \$3,290.40      |
| Mr Graeme Muldoon    | 386 Dolly's Flat Road Wingham NSW 2429  | \$16,548.10     |
| Mr Robert J Owens    | Kelso MS 75 Springsure Qld 4722   | \$8,604.00      |
| Mr Callum Payne      | Box 3 King Rock Rd "Glen Elgin" Hyden WA 6359                                 | \$9,723.00      |
| Mr Laurie Phillips   | PO Box 44 Merredin WA 6415  | \$7,665.00      |
| Mr Ross H Russell    | P O Box 228 Leederville WA 6903   | \$23,050.00     |
| Mr Stuart Smith      | PO Box 130 Pingelly WA 6308   | \$11,748.00     |
| Mr Charles Sumner    | RMB 373 A Boyup Brook WA 6244   | \$2,695.00      |
| Mr Max Thomson       | 21 Marconi Rd Albany WA 6330  | \$4,985.00      |
| Mr James Tilbury     | RMB Tambellup WA 6320   | \$30,679.00     |
| Mr Robert Webb       | RMB 535 Tenterden WA 6322   | \$9,515.00      |

|  |  |  |
|--|--|--|
|  |  |  |
|  |  |  |
|  |  |  |
|  |  |  |
|  |  |  |
|  |  |  |
|  |  |  |
|  |  |  |
|  |  |  |
|  |  |  |
|  |  |  |

If space is insufficient please attach additional sheets

## PAYMENTS

**3. Total Payments this Financial Year** \$1,117,640.98

This total includes all payments by the party.

Note:

- payments by all party units must be included in the party total;
- no category of payment is to be excluded (eg wages and salaries are included); and
- all figures must be gross.

## DEBTS

**4. Total Debts as at 30 June** \$1,152,806.62

This total includes all debts, overdrafts and unpaid accounts of the party.

Note:

- debts of all party units must be included in the party total;
- no category of debt is to be excluded; and
- all figures must be gross.

**5. Persons and Organisations to whom \$1,500 or more is owed**

In the table below list the name, address and the total amount outstanding for those persons and organisations to whom \$1,500 or more is owed.

| Name                                | Address                             | Amount Owed  |
|-------------------------------------|-------------------------------------|--------------|
| CEC Australia (Services) Pty Ltd    | 595 Sydney Rd Coburg Vic 3058       | \$85,409.16  |
| Citizens Media Group Pty Ltd        | 595 Sydney Rd Coburg Vic 3058       | \$45,494.07  |
| Publications and General Management | P O Box 836 Leesburg VA 22075 a     | \$941,115.24 |
| Mrs Marlene Harbottle               | 11 Mungala St Rochedale Qld 4123    | \$14,414.86  |
| Mrs Merrill Daniel                  | P O Box 376 Coburg Vic 3058         | \$4,433.25   |
| Mr Con Michaelaides                 | 5 Cuthbert St Broadmeadows Vic 3047 | \$5,550.00   |
| Mr Tony Drake                       | RMB 205 Manjimup WA 6258            | \$4,773.22   |
| Mr Ross Russell                     | P O Box 228 Leederville WA 6903     | \$9,642.04   |
| Mr Andrew Bailey                    | P O Box 376 Coburg Vic 3058         | \$2,387.44   |
| Ms Gabrielle Peut                   | P O Box 228 Leederville WA 6903     | \$1,673.45   |
| Mr Maurice Hetherington             | "Albury Downs" Baralaba Qld 4702    | \$8,000.00   |
| Mrs Trudy Campbell                  | P O Box 376 Coburg Vic 3058         | \$2,587.38   |
| Mr Craig Isherwood                  | P O Box 376 Coburg Vic 3058         | \$5,494.98   |
|                                     |                                     |              |
|                                     |                                     |              |
|                                     |                                     |              |
|                                     |                                     |              |
|                                     |                                     |              |
|                                     |                                     |              |
|                                     |                                     |              |

|  |  |  |
|--|--|--|
|  |  |  |
|  |  |  |
|  |  |  |
|  |  |  |
|  |  |  |
|  |  |  |
|  |  |  |
|  |  |  |
|  |  |  |
|  |  |  |
|  |  |  |

If space is insufficient please attach additional sheets



## Political Party Annual Return

2000/2001

Please refer to the *Funding and Disclosure Handbook for Political Parties* when completing this form.  
A copy of this Handbook can be viewed at the Australian Electoral Commission's website at [www.aec.gov.au](http://www.aec.gov.au)

### Party Details

Name

Citizens Electoral Council of Australia

Postal Address

P O Box 376 Coburg Vic

Postcode 3058

Telephone number (BH)

(03) 9354 0544

Facsimile number

Email address

cec@cecaust.com.au

### Agent Details

Name

Craig Isherwood

Postal Address

P O Box 376 Coburg Vic

Postcode 3058

Telephone number (BH)

(03) 9354 0544

Facsimile number

(03) 9354 0166

Email address

cwi@cecaust.com.au

I certify that the information contained in this return and its attachments is true and complete.

Agent's Signature

Date

18/10/2001

Giving false or misleading information is a serious offence

**The due date for lodging this return is 20 October, 16 weeks after the end of the financial year.**

Enquiries and returns should be addressed to:

THE RETURNS OFFICER  
FUNDING AND DISCLOSURE SECTION  
AUSTRALIAN ELECTORAL COMMISSION  
PO BOX E201  
KINGSTON ACT 2604  
Telephone: (02) 6271 4552 (02) 6271 4411

|                  |                                       |
|------------------|---------------------------------------|
| Office Use Only  |                                       |
| Date Received:   | <b>Returns Office.</b><br>22 OCT 2001 |
| Registration No: | P2036                                 |

# RECEIPTS

**1. Total Receipts this Financial Year** \$ 1,065,512.29

This total includes all receipts of the party.

Note:

- receipts of all party units must be included in the party total;
- no category of receipt is to be excluded (eg membership fees and loans received are included)
- all figures must be gross;
- receipts of less than \$1,500 must also be included in this total; and
- it includes monetary receipts and gifts-in-kind (as defined in the Handbook).

**2. Persons and Organisations from whom \$1,500 or more was received**

In the table below list the name, address and the total amount received for those persons and organisations from whom \$1,500 or more was received. Individual receipts of less than \$1,500 do not need to be aggregated as part of the amount to be disclosed for a person or organisation. Where a loan has been received from a source other than a recognised financial institution, details of the terms and conditions of that loan must also be disclosed.

| Name               | Address                                      | Amount Received |                    |
|--------------------|--|-----------------|--------------------|
| Mr T A Alrich      | 1 Hogans Rd Yarrawonga                       | Donation        | \$2,000.00         |
|                    |  | Other           | \$2,500.00         |
|                    |  | <b>Total</b>    | <b>\$ 4,500.00</b> |
| Mr K Badenoch      | P O Box 1411 Mr Gambier SA 5290              | Donation        | \$ 8,020.00        |
| Mr L Bowen         | P O Box 379 Northam WA 6401                  | Donation        | \$ 2,000.00        |
| Mr & Mrs K Collins | 1110 Oxford Falls Road Oxford Falls NSW 2100 | Other           | \$ 2,500.00        |
| Mr A Evans         | RMB 318 Moruya NSW 2537                      | Donation        | \$ 1,500.00        |
| Mr Henry Gillham   | P O Box 77 Glenden Qld 4742                  | Donation        | \$37,500.00        |
| Mr J Harvey        | RMB 130 Wagin WA 6315                        | Donation        | \$ 7,000.00        |
| Mr D Hope          | 44 Mudgee St Kingstone Qld 4114              | Donation        | \$ 2,000.00        |
| Mrs J McClung      | 9 Ashgrove Place Bundanoon NSW 2578          | Donation        | \$10,300.00        |
|                    |  | Other           | \$ 2,000.00        |
|                    |  | <b>Total</b>    | <b>\$12,300.00</b> |
| Mr G Muldoon       | 386 Dolly's Flat Rd Wingham NSW 2429         | Donation        | \$ 5,629.21        |
| Mr R Owens         | Kelso MS 75 Springsure Qld 4722              | Donation        | \$ 5,450.00        |
| Mr I Pidgeon       | MS 172 Allora Qld 4362                       | Other           | \$ 1,500.00        |
| Mrs S Roberts      | 18 Patamba St Wagga Wagga NSW                | Donation        | \$ 1,500.20        |
| Mr J Tilbury       | RMB Tambellup WA 6320                        | Donation        | \$ 9,000.00        |
| Mr R Webb          | RMB 535 Tenterden WA 6322                    | Donation        | \$ 2,000.00        |
| Mr R Witten        | "Appledore" Barraba NSW 2347                 | Donation        | \$ 4,500.00        |
|                    |  |                 |                    |
|                    |  |                 |                    |
|                    |  |                 |                    |
|                    |  |                 |                    |
|                    |  |                 |                    |
|                    |  |                 |                    |
|                    |  |                 |                    |
|                    |  |                 |                    |





## Register of Political Parties

The Australian Electoral Commission has received the following applications for registration as political parties under the provisions of the *Commonwealth Electoral Act 1973* (the Act):

|  |  |
|--|--|
| Name of Party:                                   | <b>Australians Against Further Immigration</b>                                     |
| Name and address of Proposed Registered Officer: | <b>Edwin John Woodger<br/>3 Canberra Street<br/>LANE COVE NSW 2066</b>             |
| Name of Party:                                   | <b>Lower Excise Fuel and Beer Party</b>  |
| Name and address of Proposed Registered Officer: | <b>David Austin O'Loughlin<br/>18 Nardie Street<br/>COFFS HARBOUR<br/>NSW 2450</b> |
| Name of Party:                                   | <b>Outdoor Recreation Party</b>  |
| Party abbreviation:                              | <b>ORP</b>   |
| Name and address of Proposed Registered Officer: | <b>Malcolm Irving Jones<br/>31/63A Barnstaple Road<br/>FIVE DOCK NSW 2046</b>      |
| Name of Party:                                   | <b>Curtin Labor Alliance</b>   |
| Name and address of Proposed Registered Officer: | <b>Craig William Isherwood<br/>15 Muchell Grove<br/>COBURG VIC 3058</b>            |
| Name of Party:                                   | <b>The Fishing Party</b>   |
| Name and address of Proposed Registered Officer: | <b>Robert Arthur Smith<br/>11 Watts Close<br/>SINGLETON NSW 2330</b>               |

The above applications are made by 10 members of each party and state they wish to receive election funding.

If you believe any of the above parties should not be registered because:

- one of their objectives is not the promotion of endorsed candidates to Federal Parliament;
- they do not have at least 500 members who are entitled to enrolment under the Act, and have not been relied on by another party for the purpose of Federal registration; or
- the name or abbreviation is obscene or is likely to be confused with that of an unrelated recognised party;

you may lodge an objection in writing. Any objections should be sent to the Registrar of Political Parties at the Australian Electoral Commission, PO Box E201, KINGSTON ACT 2604. Objections must include your name, address and reason for the objection and be received by the Registrar by 5pm, 7 September 2001. Objections that do not contain these details, or are not received by the due date, cannot be considered when determining the applications.

Please contact Teena-Maree Hannett on (02) 6271 4491 for further information on the applications or objection process. Objections will be sent to the applicants for comment before any decision on the registration is made.

A K Becker  
Electoral Commissioner

00032

Australian Electoral Commission **AEC**

130712/5481