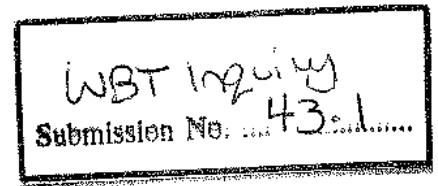


response to request for Additional Information relating to Parliamentary Inquiry into Wireless Broadband

29 July 2002



Council's Current Licensed Microwave Network.

The Microwave network is summarised in the attached schematic. The original network was installed in 1992 and has been expanded over time. It is a private (Council only) network carrying a combination of both Voice and Data services.

The Network is all ACA licensed spectrum operating in the 15Ghz, 23Ghz and 38Ghz frequency ranges with traffic capacity ranging from 2Mb to 34Mb.

The network was originally installed as part of a total PABX upgrade and allowed Toll-Bypass for all voice traffic between the connected sites as well as a private Data network. This private microwave network provides services much more cost effectively than the equivalent Carrier Services. The microwave network is centered around Council's Surfers Paradise Administration building and ranges from Coolangatta to Beenleigh and west to Nerang.

Council has a tender currently under evaluation (in the approval stages) to upgrade the Southern Portion of this private microwave network (see attached diagram with the Southern portion outlined). The results of this tender will see the microwave upgraded to greater traffic capacity (155Mb and 34Mb). The anticipated timing of the upgrades is for the Southern Network to be upgraded by the end of December 2002 and the Northern Network shortly after (prior to June 2003).

Unlicensed ISM band.

Council currently has on radio operating in the ISM band at 2.4GHz. This link is between Council at its Internet Service Provider and is Council's primary Corporate internet access.

Attached is an overview of Council's Voice Network and a diagram of the full Data Network as well as the Microwave Network Schematic.

Southport Office
(ACA site 401822)

Gold Coast Hospital
Roof Repeater Site
(ACA site 13689)

TELSTRA VOICELINKS
SES Queen St x 2
Queen St Cemetery
S/Port Lawn Cemetery
S/Port Comm Centre
S/Port Lib x 15
Loder's Ck Tourist Park x 2
Main Beach Lifeguards
Main Beach Tourist Park x 2
Ashmore Bike Safety Centre x 2
Ashmore Skateboard Centre

Southport Depot
(ACA site 13704)

TELSTRA VOICELINK
Community Centre Your Park

Molendinar WPP
(ACA site 13633)

Coombabah WQCC
(ACA site 13742)

TELSTRA VOICELINKS
Runaway Bay Lib x 4
Runaway Bay Comm Centre
Paradise Pt Comm Centre
Suntown Tip

Surfers Paradise
GCCC Administration
(ACA site 13813)
GCCC Arts Centre
(ACA site 55239)

TELSTRA VOICELINKS
Benowa T/Plant x 2
Surfers Paradise Lifeguards
Bruce Bishop Car Park
Bruce Bishop Car Park
Cascade Gardens Lib
Cascade Gardens Lib
Narrowneck Lifeguards x 2
Transit Centre x 3

Minlink15E 17x2Mb/s
(ACA No 121404)

Pimpama Vodafone
Tower Repeater Site
(ACA site 51775)

Beenleigh Depot
(ACA site 401824)

Beenleigh Library/
Community Centre
(ACA site 401823)

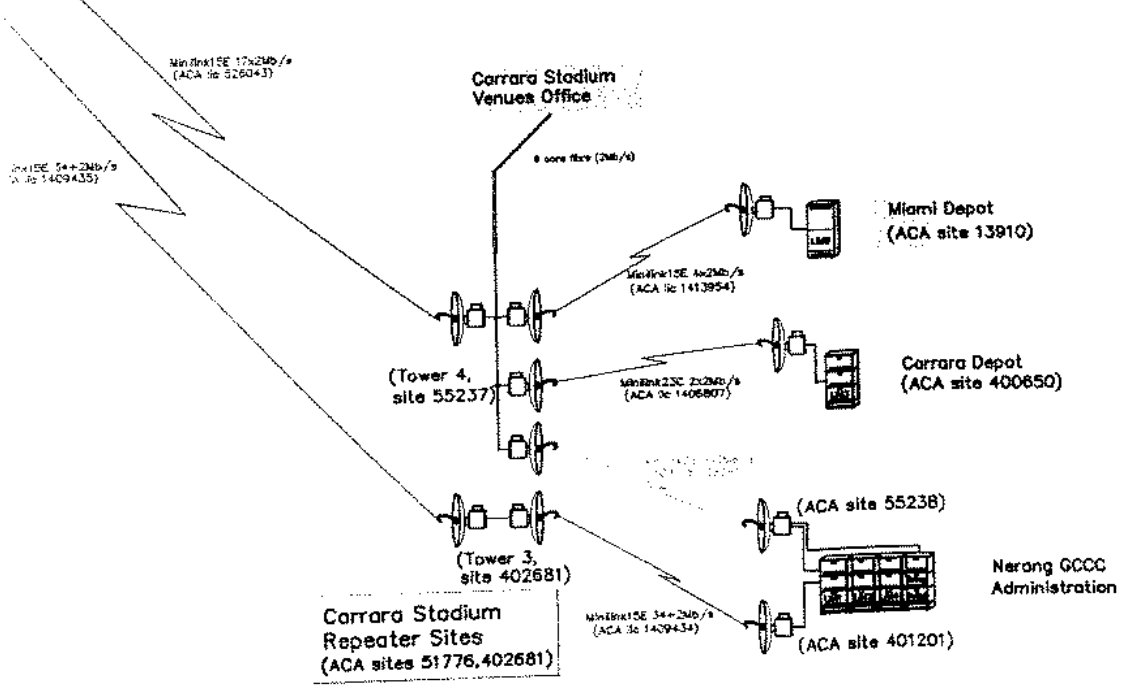
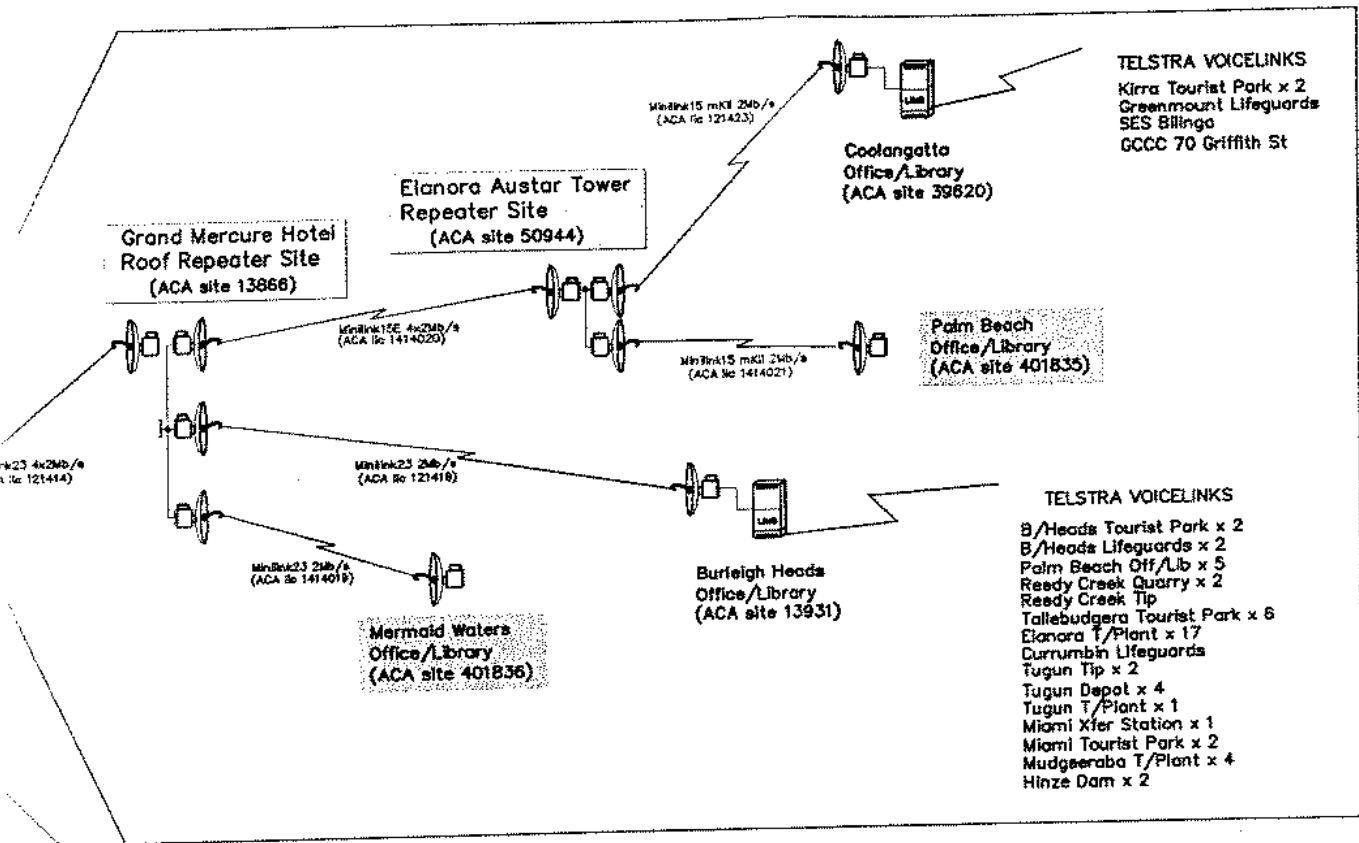
Beenleigh Office

CORTECHS BRANCH

GOLD COAST CITY COUNCIL
PO BOX 5042, GOLD COAST MC 9729

DATE AMENDED

JULY 2002



GCCC MICROWAVE NETWORK TOPOLOGY
 (ACA client ID 63560)





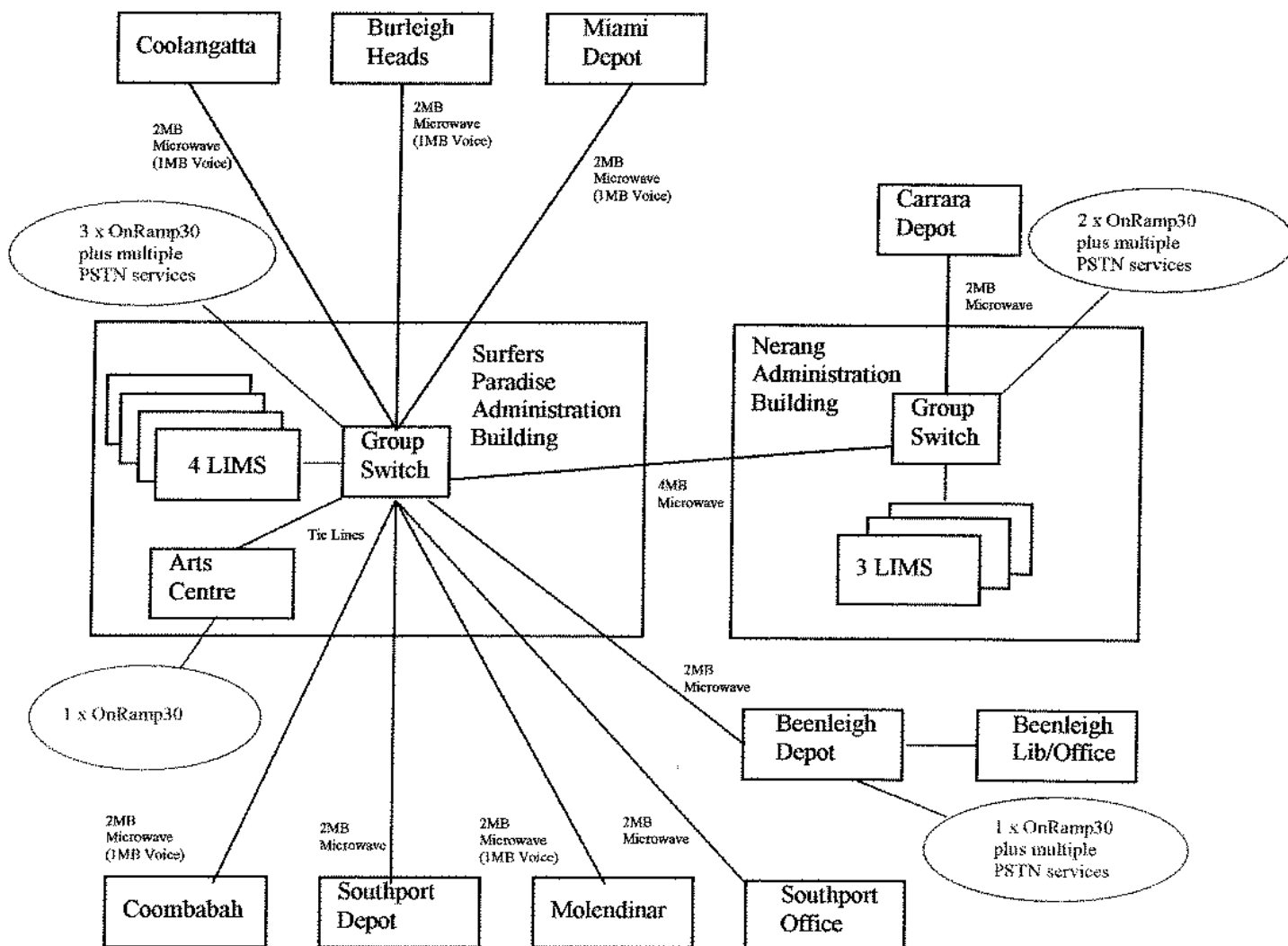
APPENDIX A – OVERVIEW OF EXISTING VOICE NETWORK

VOICE INFRASTRUCTURE

A.1. NETWORKED SITES (Council's Private Voice Network)

A.1.1 Ericsson PABX Network Infrastructure

Currently Council has 18 Ericsson MD110 and Consono PABXs (or LIMs - Line Interface Modules). These PABXs are networked together via 2MB microwave links (some limited to 1MB for Voice) as shown in the diagram, with 17 PABXs networked to form one virtual PABX network and the 18th PABX (Arts Centre) operating as a separate PABX with interconnection via tie lines.





In addition to the above, Council's private voice network is further expanded by **voice link** services connecting multiple locations back to various LIMs. (e.g. Southport Library is connected to Southport Depot via voice link services). **The benefits of this private voice network are that calls within it** (e.g. extension to extension calls from Carrara Depot to Coolangatta Office) **are free of charge.**

A.1.2 VOICELINKS from PABX LIMs

Surfers

Narrow Neck Lifeguards
Bruce Bishop Car Park
Benowa Treatment Plant
Transit Centre
Cascade Gardens
Surfers Lifeguards
Cavill Mall
Runaway Bay Community Hall
Runaway Bay Library
Suntown Tip

Southport Depot

Southport Community Centre
Queen St Cemetery
Southport Library
Ashmore Bicycle Centre
Main Beach Car Park
Main Beach Tourist Park
Southport Cemetery
Broadwater Tourist Park
Main Beach Lifeguards

Burleigh Heads

Miami Transfer Station
Palm Beach Library/Office
Mudgeeraba Treatment Plant
Elanora Treatment Plant
Reedy Creek Tip
Reedy Creek Quarry
Burleigh Tourist Park
Tallebudgera Tourist Park
Hinze Dam Ranger
Hinze Dam Kiosk
Burleigh Lifeguards
Currumbin Lifeguards
Miami Tourist Park
Tugun Depot
Tugun Treatment Plant

Coolangatta

Greenmount Lifeguards
Kirra Tourist Park

A.2 STAND ALONE SITES (i.e. Not part of Council's Private Network)

A.2.1 Sites with Small Ericsson Phone Systems

Cavill Mall Promotions Office	BP Advantage
Local Studies Library, Southport	BP Advantage
Masters Games Office, Southport	BP Select
Robina Library	BP Select
Kirra Tourist Park	BP Advantage
Broadwater Tourist Park	BP Advantage
Main Beach Tourist Park	BP Advantage



Burleigh Tourist Park	BP Advantage
Miami Tourist Park	BP Advantage
Palm Beach Office/Library	BP Select
Elanora Library	BP Advantage

A.2.2 Sites with Small Telstra Phone Systems

Burleigh Waters Library	Commander System
Merrimac Treatment Plant	Commander System
Mermaid Waters Library	Commander System

A.2.3 All other remote sites have dedicated Telstra phone services

