

Lake Charm Primary School

Supplementary Submission

Senate Committee Inquiry into Primary Schools for the 21st Century.

In addition to our original submission with the Senate Committee inquiring into Primary Schools for the 21st Century, Lake Charm Primary School wishes to make a supplementary submission to the inquiry by including the following photographs and documented evidence.

Sunday 24th of January

These photographs were taken just three days before teaching staff were due to be back at school for Professional Development.

Consequently, teachers had to abandon involvement in the mandated three days of Professional Development to begin the clean up of the school classrooms, ensuring there was a workable space available for when students returned on the 1st of February.



Classroom resources, materials and staff belongings stacked along the side bench in the Senior Classroom



The computer bench in the Senior Classroom. These benches are not designed for weight bearing yet heavy resource boxes were stacked on top and in between valuable computers. The bench is now damaged.



The front wall of the Senior Classroom where black boards have been removed to allow new joinery, whiteboards and existing electronic whiteboard to be installed.



Senior Classroom space. To the right of the photo is the existing electronic whiteboard which had been removed from the wall. These whiteboards were under warranty, but as they were moved by people other than the whiteboard company, the warranty is now void in both classrooms.



The Junior Classroom with the electronic whiteboard in the centre of the photograph. As stated above, the warranty is now void on both whiteboards.



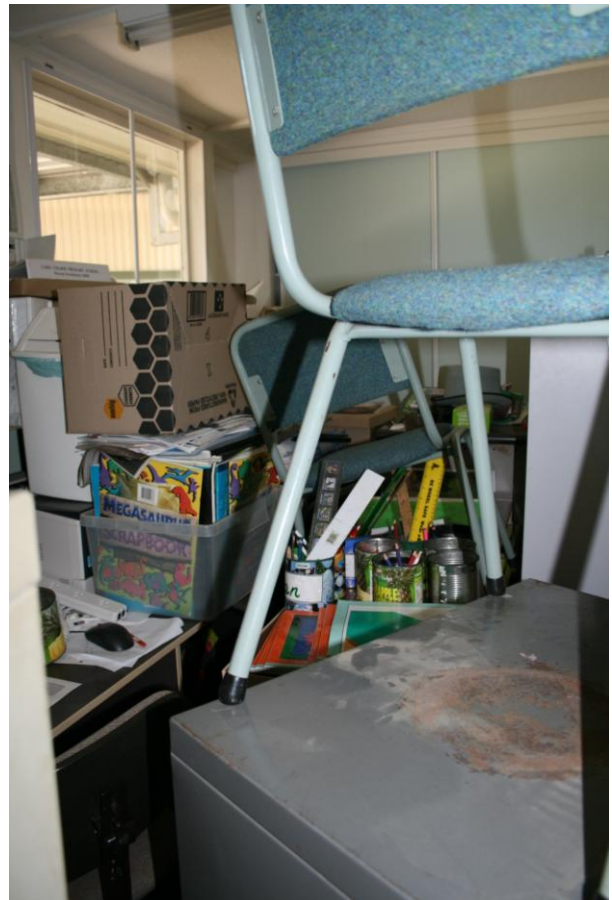
The side bench in the Junior Classroom. The computers were stacked with other items on top.



The front wall of the Junior classroom where blackboards, cupboards and a stage had been removed to allow new whiteboards and joinery and existing electronic whiteboard to be installed.



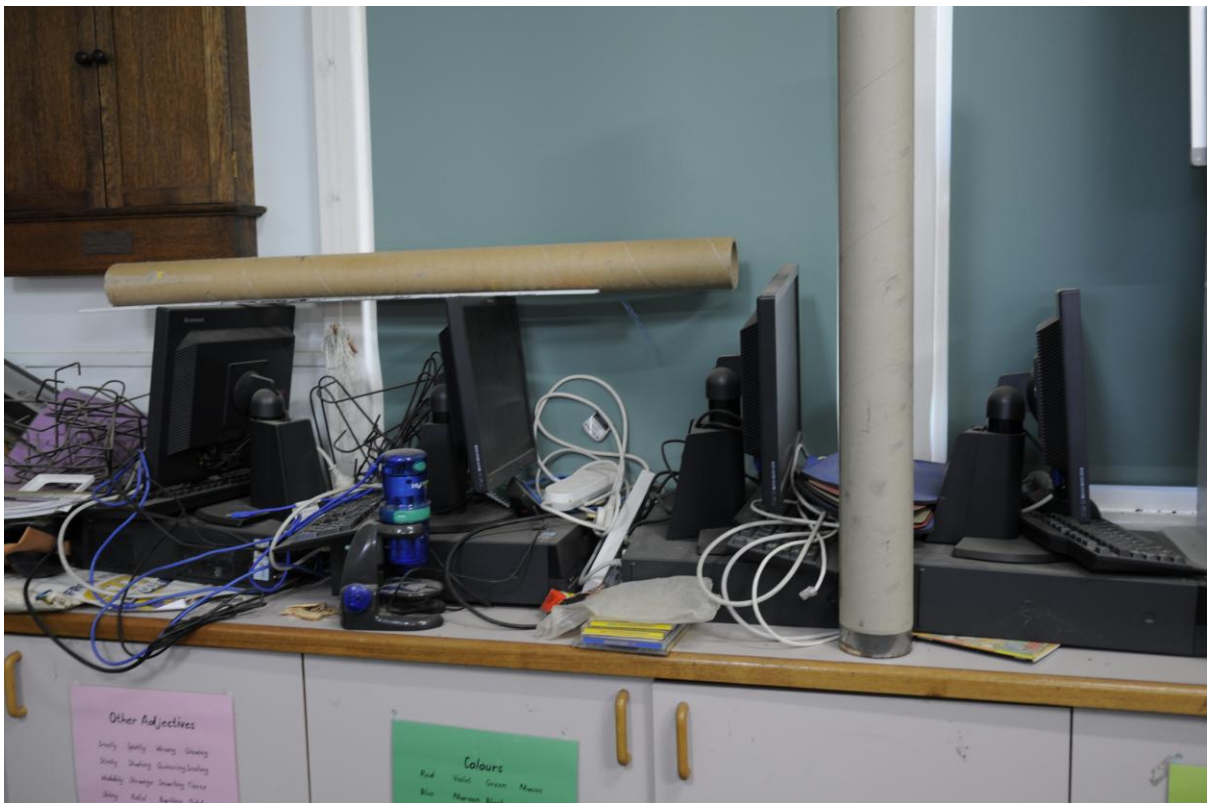
The corridor and main entrance to the school. Heavy filing cabinets, trolleys and resources were stacked together and left for teaching staff to reinstate back into the classroom. The door at the end of the corridor is the school office which was left inaccessible.



Photographs taken from the door to the school office. The office was completely inaccessible with full filing cabinets blocking the only entrance. The only telephone access was in the office as all other phones had been disconnected for building works.

Saturday 30th of January

The following photographs were taken two days before students were due to resume classes on Monday the 1st of February. Teaching staff, school councillors and their families spent all day on both Saturday 30th of January and Sunday 31st of January working at the school to try and ensure there would be at least one safe teaching space available when students returned. Despite their best efforts, the school was still considered to be unsafe on Monday the 1st of February and Lake Charm Primary School was officially closed for the day. Students did not resume until Tuesday 2nd of February.



The side bench in the Junior Classroom with items stacked on top of computers which had been shifted from their original location.



The side bench in the Junior Classroom with resources stacked on top.



The side bench in the Junior Classroom.



The cords from the interactive whiteboard in the Junior Classroom were left hanging from the mount for the projector.



The school corridor, leading to the office.



The school corridor, leading to the library and kitchen/staff room.



Resources from the Senior Classroom, stacked on top of benches.



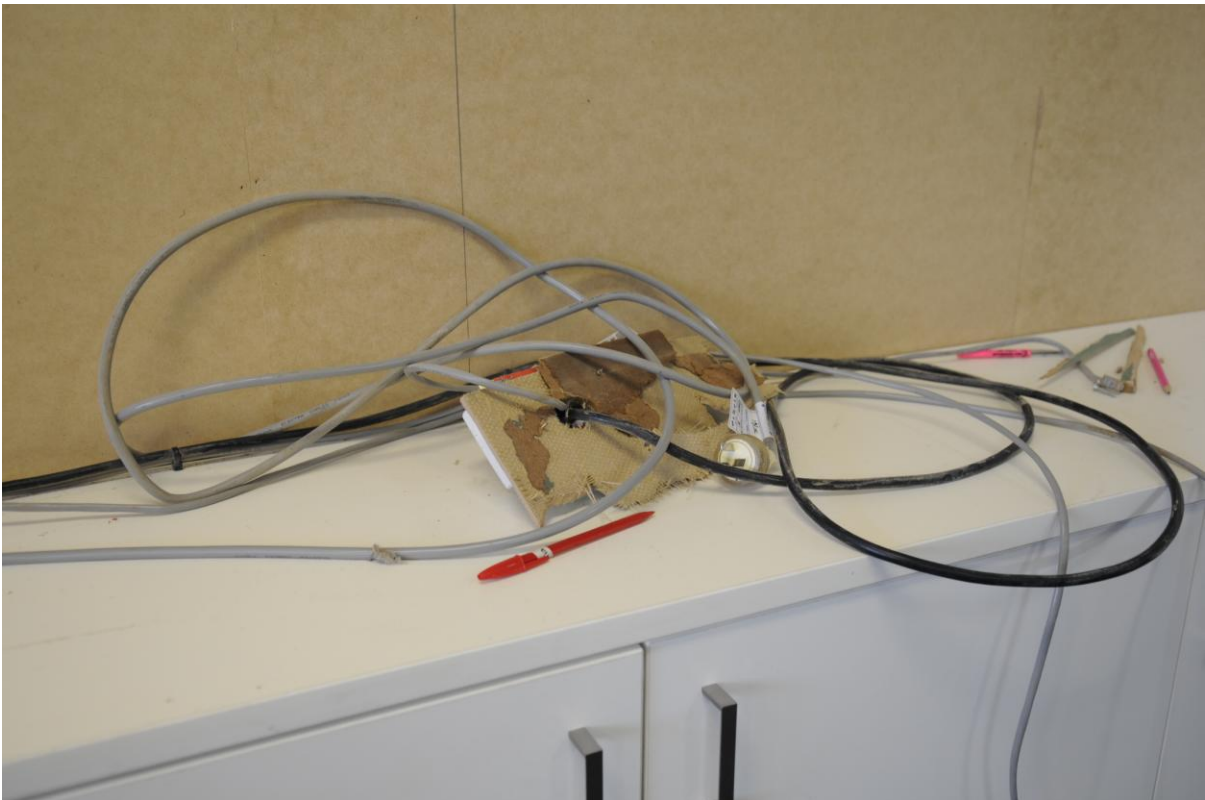
The Senior Classroom bench. New carpet and some joinery had been installed as can be seen in the photo.



The school server which controls the network on every computer in the school is pictured on the left hand side of the photograph with many items stacked on top.



The new joinery was installed in the Senior Classroom but without shelving which made it difficult to reinstate classroom resources.



Loose cables from electronic whiteboard in Senior Classroom.



Rubbish outside the school building.



Protruding nails at the front of the school building.



Classroom resources mixed up and placed haphazardly in the Art Room.



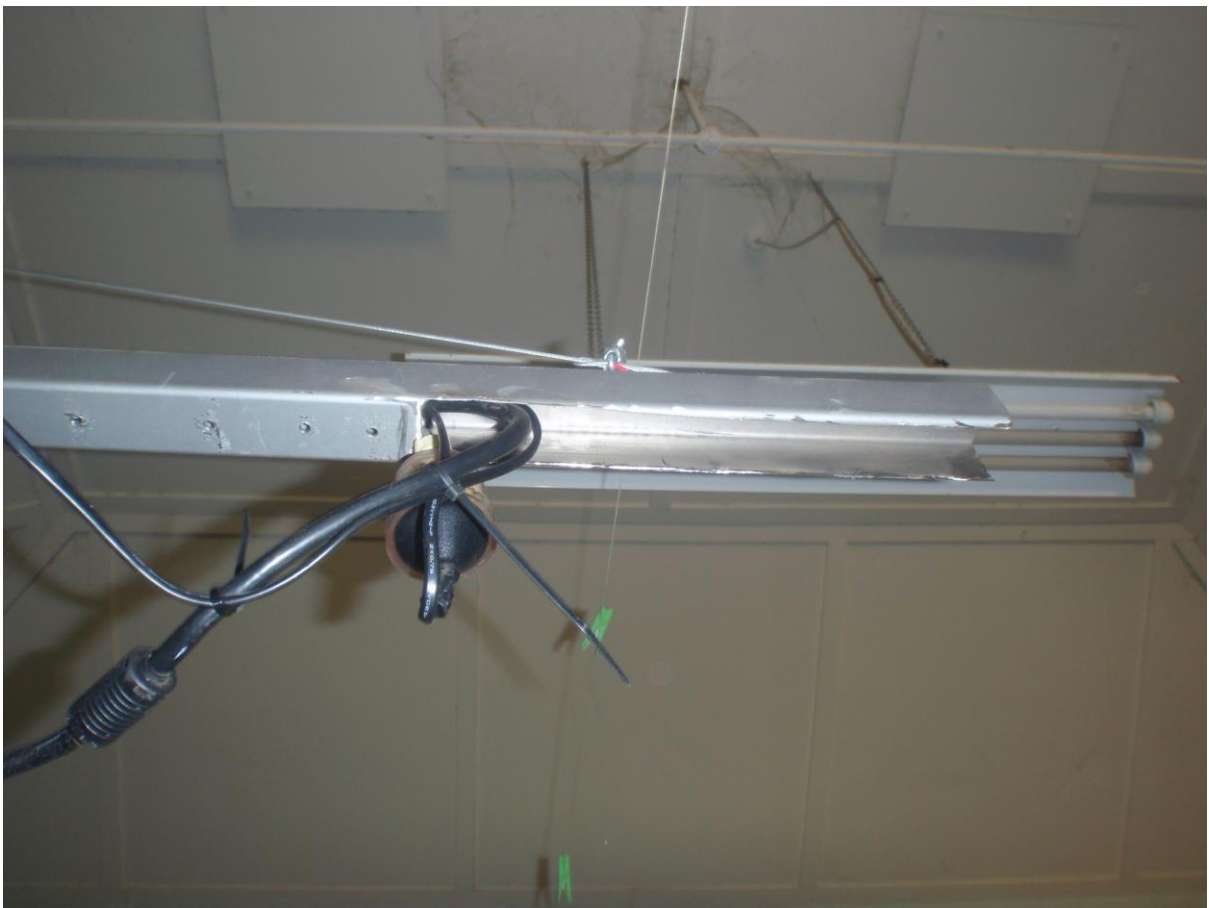
Rubble outside the main school building, which lay between the toilets and the playground for the entirety of Term 1.

Tuesday 2nd March

All students from Grades Prep to Six were taught in one classroom for the entirety of Term 1 as only one classroom could be effectively reinstated. The following photographs are from the classroom which was being used to teach all students.



The interactive whiteboard in the Junior Classroom was placed incorrectly on the wall. It was not lined up with the projector, therefore it was unusable. The original plans show that there should also be a magnetic whiteboard and a pinboard of equal size, on either side of the electronic whiteboard. As of 14th of May, this has still not been corrected and the electronic whiteboard is still unusable.



Sharp, unfinished edges with electrical cable rubbing along the projector arm in the Junior Room.



The raw edge of the projector arm which, as of 14th of May, is still in this condition.



New carpet tiles lifted from the floor in both classrooms and created a tripping hazard for students and staff.

Wednesday 17th March

Painting began in the Senior Classroom on the 17th of March, after the classroom had been tidied and began to be put back into order. Any work which had begun to return the classroom to a teaching and learning space was disrupted once again, as can be seen from the following photographs.



The state of the Senior Classroom after the painters shifted classroom resources.