

Dear Senators,

Thank you for this Senate Inquiry.

I am a long serving ABC employee who has always been extremely proud to work for the National Broadcaster. I believe we have a great responsibility to the community & to ourselves to make unique television that represents ALL Regions of Australia.

In my submission, I have tried to demonstrate what I strongly believe to be centralisation in both Sydney & Melbourne. The statistics reflect that the staff numbers in Tasmania, South Australia & Western Australia have been gradually declining for several years whilst staff numbers in Sydney & Melbourne have increased. **It's important to note that if the proposal to close down the TV Production Unit in Tasmania goes ahead then the staff numbers in Tasmania will reduce by a further 11%.**

All the figures I've used in this document came directly from the ABC Annual Reports from 2002 - 2012 which is in the public domain.

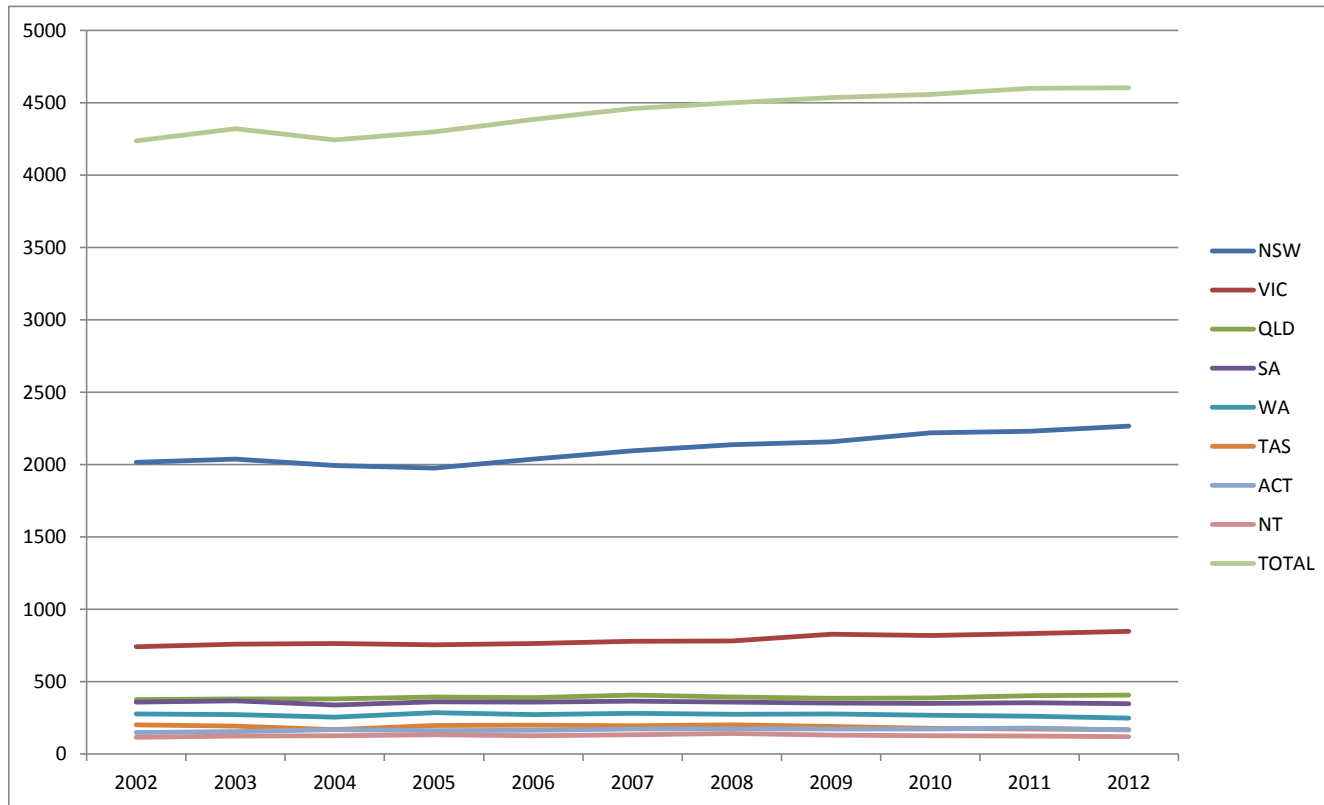
Thank you for your consideration.

Kind Regards,

Joanne Lowe

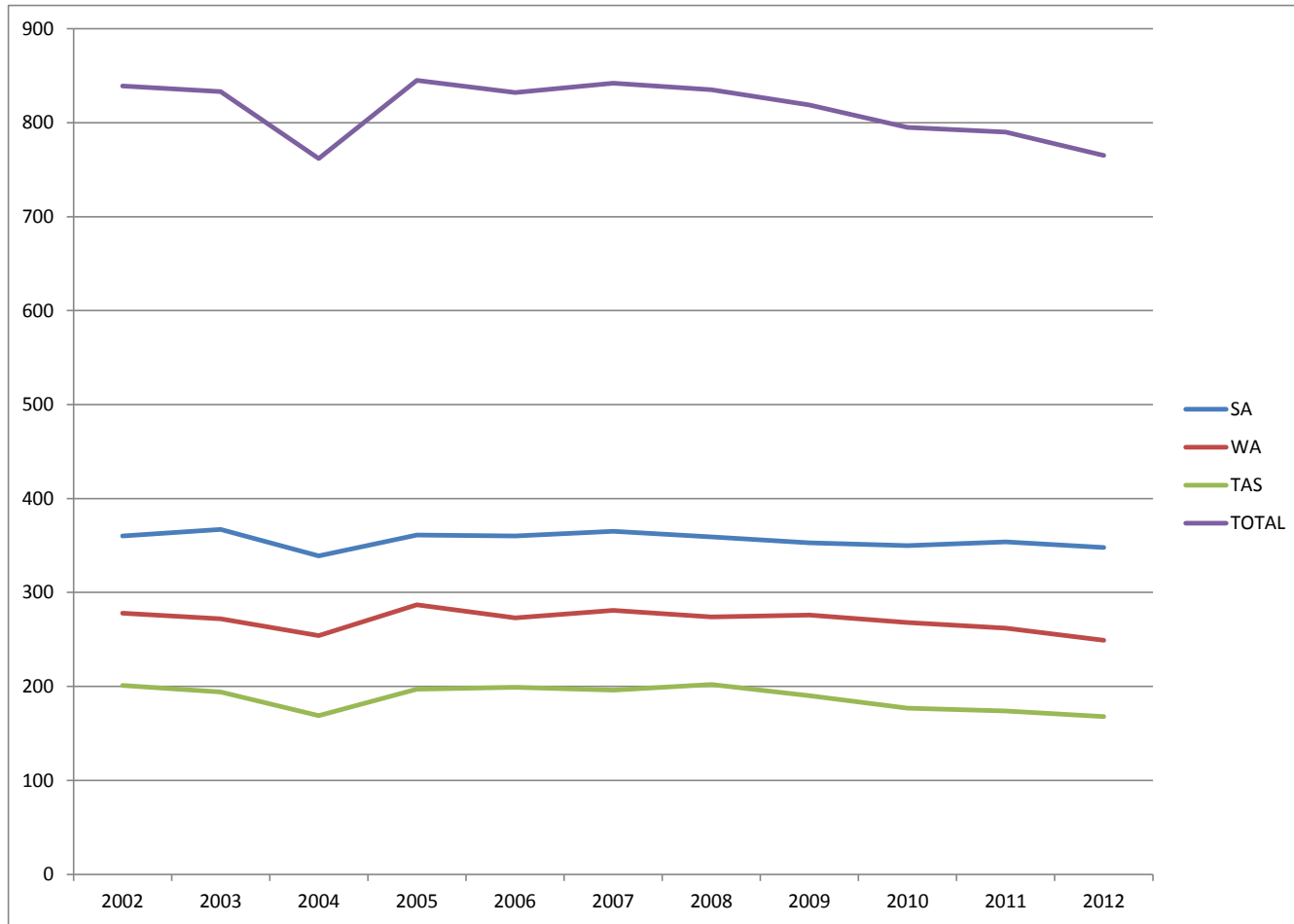
### ABC CORE STAFF TOTALS IN ALL STATES & TERRITORIES FROM 2002 - 2012

	2002	2003	2004	2005	2006	2007	2008	2009	2010	2011	2012
NSW	2015	2039	1994	1977	2037	2096	2137	2158	2219	2230	2266
VIC	742	760	763	756	764	780	782	829	820	832	848
QLD	377	380	381	395	391	408	395	385	387	404	408
SA	360	367	339	361	360	365	359	353	350	354	348
WA	278	272	254	287	273	281	274	276	268	262	249
TAS	201	194	169	197	199	196	202	190	177	174	168
ACT	148	155	169	163	165	173	175	172	173	179	167
NT	116	125	127	133	126	133	143	131	127	124	121
<b>TOTAL</b>	<b>4237</b>	<b>4321</b>	<b>4244</b>	<b>4298</b>	<b>4385</b>	<b>4461</b>	<b>4499</b>	<b>4535</b>	<b>4557</b>	<b>4599</b>	<b>4603</b>



**ABC CORE STAFF TOTALS IN TASMANIA, SOUTH AUSTRALIA & WESTERN AUSTRALIA (2002 - 2012)**

	2002	2003	2004	2005	2006	2007	2008	2009	2010	2011	2012
SA	360	367	339	361	360	365	359	353	350	354	348
WA	278	272	254	287	273	281	274	276	268	262	249
TAS	201	194	169	197	199	196	202	190	177	174	168
<b>TOTAL</b>	<b>839</b>	<b>833</b>	<b>762</b>	<b>845</b>	<b>832</b>	<b>842</b>	<b>835</b>	<b>819</b>	<b>795</b>	<b>790</b>	<b>765</b>

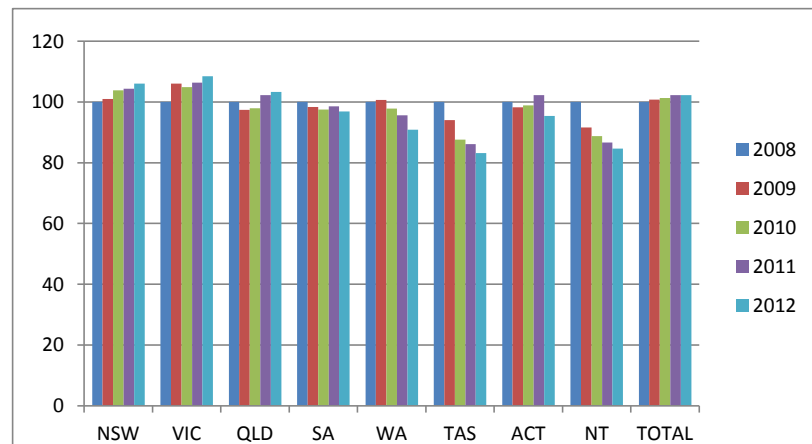


**ABC CORE STAFF TOTALS AS PERCENTAGES IN EACH STATE & TERRITORY (2008-2012)**

	2008	2009	2010	2011	2012
NSW	2137	2158	2219	2230	2266
VIC	782	829	820	832	848
QLD	395	385	387	404	408
SA	359	353	350	354	348
WA	274	276	268	262	249
TAS	202	190	177	174	168
ACT	175	172	173	179	167
NT	143	131	127	124	121
<b>TOTAL</b>	<b>4499</b>	<b>4535</b>	<b>4557</b>	<b>4599</b>	<b>4603</b>

	2008	2009	2010	2011	2012
NSW	100	101	104	104	106
VIC	100	106	105	106	108
QLD	100	97	98	102	103
SA	100	98	97	99	97
WA	100	101	98	96	91
TAS	100	94	88	86	83
ACT	100	98	99	102	95
NT	100	92	89	87	85
<b>TOTAL</b>	<b>100</b>	<b>101</b>	<b>101</b>	<b>102</b>	<b>102</b>

Note the **increased** percentages in NSW & VIC. **129 jobs in NSW & 66 in VIC** have been created in the past 5 years. On the other end of the scale **Tasmania** has lost **34 jobs** in 5 years (& potentially another **16-18 jobs** this year).



This reflects a **declining trend** in staff numbers in the Regions.

