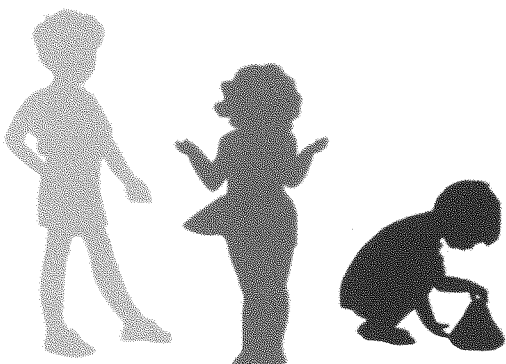


SEA LAKE Pre-school Early Years Profile

2014

(with 2015 AEDC data update)



CONTENTS	Page #
Data Areas	3
The Service	4
Census Data	4-9
SEIFA Disadvantage data	10
AEDI data	11-13
My Schools data	14
NAPLAN data	15-18
Appendix 1	19

Final report presented June 2014

AEDC data updated May 2016

Rachael Williams
Local Logic Place
PO Box 1493
Swan Hill VIC 3585

www.locallogicplace.com.au



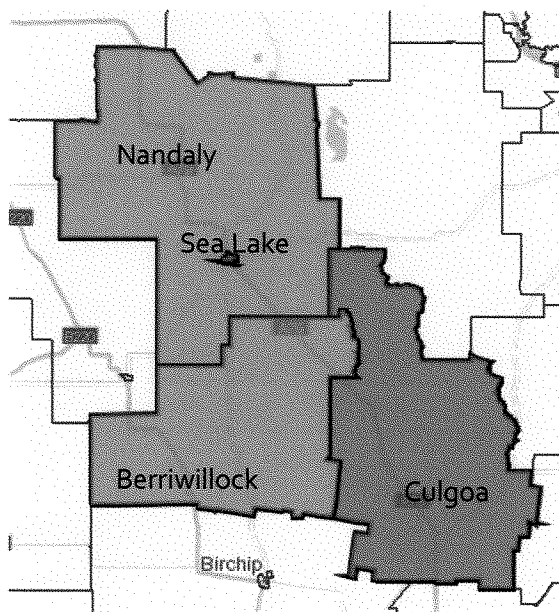
*For Community Development,
Research & Project Management*



DATA AREAS

The **Sea Lake** Pre-school is within the Buloke Shire LGA. The following Census and AEDI data areas have been applied in developing this Early Years Profile:

- Census State Suburbs (shown in the left map) – Sea Lake (small dark red 'dot'), Nandaly (uppermost red area surrounding Sea Lake), Culgoa (lower right area) and Berriwillock (lower left area) are a largely accurate representation of the northern two thirds of the 'Northern Buloke' AEDI area (with the notable absence of the Birchip community).
- AEDI data – Northern Buloke (blue area shown right) which is larger than the Census area.



THE SERVICE

Sea Lake Pre-school is a single unit Kindergarten situated in Mudge St, Sea Lake. The Pre-school operates from a Buloke Shire owned building and is cluster managed by the Mallee Track Health and Community Service.

Sea Lake Pre-School currently offers a four-year-old pre-school program, 15 hours a week over three days (Wednesday-Friday). Children must be four years old by April 30th to be eligible for the next year's intake.

Sea Lake Pre-school is managed by a committee structure comprised of parents whose children attend the centre. The Committee of Management determine policies, provide input and support for the educational program, represent parents in liaising with the school regarding the transition program, manage accounts and book keeping and fundraise for the Kindergarten, in addition to cleaning the Kindergarten and doing maintenance work.

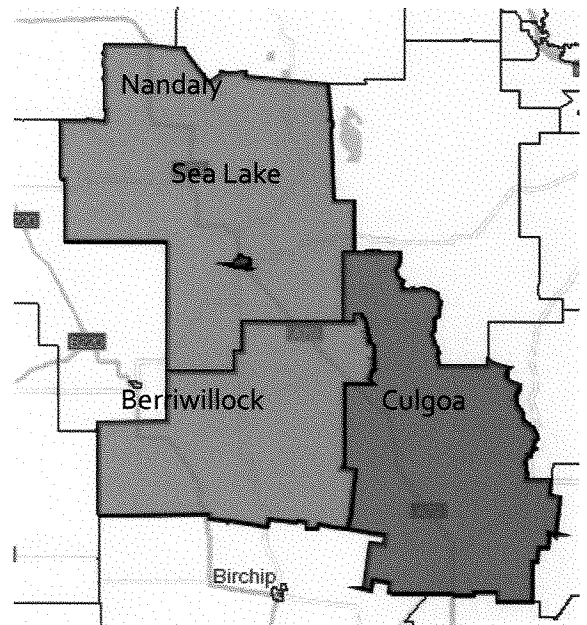
Sea Lake is a wheat-belt town of some 500 people. Located on the Calder Highway, 369 km north-west of Melbourne in Victoria, Australia. The closest major centres are Swan Hill 77 kms to the east, Horsham 176kms to the south west, Mildura 190kms to the north and Bendigo 213kms to the south east.

In 2014 15 hours per week of Pre-school programming were being delivered to four year olds attending the Sea Lake Kindergarten. The delivery program was as follows:

- Wednesday 9:30am –3:00pm (Sandra George)
- Thursday 9:30am –3:00pm (Bronwen Alday)
- Friday 8:30am – 12:30pm (Bronwen Alday)

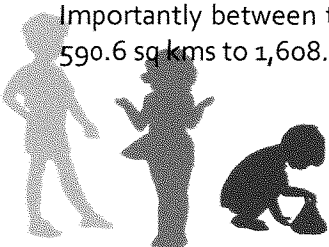
CENSUS DATA – the Early Years population

The Census data presented as the Early Years 'catchment' for the Sea Lake Pre-School includes the State Suburbs of Sea Lake, Nandaly, Berriwillock and Culgoa. The State Suburb of Sea Lake, as reported in the 2011 Census, incorporates the township of Sea Lake only and covers an area of 2.3 sq kms. According to the 2006 census Sea Lake's population sat at 634 (7.4% of this population, representing 47 children, were aged between 0-4 years). At the 2011 Census the Sea Lake population had declined to 615 with 35 (or 5.7%) of this population aged 0-4 years. Importantly the Census area for the Sea Lake State Suburb declined from 2.8 sq kms in 2006 to 2.3 sq kms in 2011 so accurate assumptions of decline are not possible.



When considering the Early Years population for participation in the Sea Lake pre-school it is import to also consider the Nandaly, Berriwillock and Culgoa State Suburb populations. This report recognises that whilst it is more likely that only the northern portions of both the Berriwillock and Culgoa State Suburbs gravitate to Sea Lake for education services (with the southern areas of these State Suburbs seeking services in Birchip) the entire populations for both areas are 'counted' in the Early Years population presented here.

Importantly between the 2006 and 2011 Census periods the Nandaly State Suburb increased in size from 590.6 sq kms to 1,608.7 sq kms, as a result population comparisons between 2006 and 2011 are not possible



for the Nandaly State Suburb. At the 2006 Census the Nandaly population sat at 123 with 6 (or 4.9%) of this population aged 0-4 years. At the 2011 Census the Nandaly population had increased to 229 with 11 (or 4.8%) of this population aged 0-4 years.

Importantly between the 2006 and 2011 Census periods the Berriwillock State Suburb decreased in size from 1,524.5 sq kms to 1,010.4 sq kms, as a result population comparisons between 2006 and 2011 are not possible for the Berriwillock State Suburb. At the 2006 Census the Berriwillock population sat at 353 with 22 (or 6.2%) of this population aged 0-4 years. At the time of the 2011 Census the Berriwillock population had decreased to 320 with 15 (only 4.7%) of this population aged 0-4 years. Significant is the relative decline in Early Years population between the 2006 and 2011 Census periods.

Importantly between the 2006 and 2011 Census periods the Culgoa State Suburb increased significantly in size from 4.8 sq kms to 1,234.8 sq kms, as a result population comparisons between 2006 and 2011 are also not possible for the Culgoa State Suburb. At the 2006 Census the Culgoa population sat at 98 with 7 (or 7.1%) of this population aged 0-4 years. At the 2011 Census the Culgoa population had increased to 337 with 22 (or 6.5%) of this population aged 0-4 years.

Regardless of changes to Census boundaries between the 2006 and 2011 Census periods all State Suburbs documented in the Sea Lake Early Years Profile exhibit a relative decline in Early Years population. Sea Lake experienced the largest relative decline in Early Years population with children aged 0-4 years declining from 7.4% to 5.7% of their overall population. Berriwillock experienced the next largest relative decline in Early Years population with children aged 0-4 years declining from 6.2% to 4.7% of their overall population.

The table below presents the August 2011 Census figures into 1 year cohorts for the Sea Lake, Nandaly, Berriwillock and Culgoa State Suburbs' children aged 0-4 years. The 2 year old cohort at the time of the 2011 Census best projects the 4 year old pre-school demand in 2014. Excluding the possibility of population change through families entering and leaving these communities there would be approximately 3 children seeking pre-school programming in 2014, 20 children in 2015 (the 1 year old population in 2011) and 13 children in 2016 (the 0 year old population in 2011).

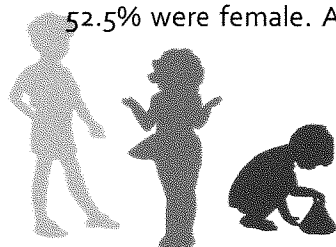
<i>Sea Lake</i>	<i>Persons</i>	<i>Nandaly</i>	<i>Persons</i>	<i>Berriwillock</i>	<i>Persons</i>	<i>Culgoa</i>	<i>Persons</i>
Age (years):		Age (years):		Age (years):		Age (years):	
0	6	0	0	0	3	0	4
1	4	1	5	1	3	1	8
2	3	2	0	2	0	2	0
3	10	3	6	3	3	3	5
4	12	4	0	4	6	4	5
0-4 years	35	0-4 years	11	0-4 years	15	0-4 years	22

Source: Census Basic Community Profiles for Sea Lake, Nandaly, Berriwillock and Culgoa 2011.

These projections DO NOT account for those children in the southern portions of the Berriwillock and Culgoa State Suburbs who may seek kindergarten programming at alternative services such as those available at Hopetoun, Birchip or Wycheproof. For this reason the remainder of this profile documents Census data for the broader population's characteristics for the Sea Lake and Nandaly State Suburb only.

CENSUS DATA – the broader population

In the 2011 Census, there were 615 people in the Sea Lake (State Suburb) of these 47.5% were male and 52.5% were female. Aboriginal and Torres Strait Islander people made up 0.7% of the population with a



median age of 60 years. The median age of the Sea Lake population had increased slightly from 44 years in 2006 to 45 years in 2011.

In the 2011 Census, there were 229 people in the Nandaly (State Suburb) of these 56.3% were male and 43.7% were female. Aboriginal and Torres Strait Islander people made up 0.0% of the population. The median age of the Nandaly State Suburb population was 44 years.

CENSUS DATA – cultural diversity

Whilst the Sea Lake and Nandaly communities showed some cultural diversity the population was largely Australian born, 85.6% for Sea Lake and 97.4% for Nandaly compared to a national rate of 69.8%. The table below displays the key countries of birth for the Sea Lake and Nandaly communities.

COUNTRY OF BIRTH	Sea Lake	Nandaly	Buloke LGA	Victoria	Australia
Country of Birth – Australia	85.6%	97.4%	90.3%	68.6%	69.8%
Country of Birth – England	2.1%	-	1.5%	3.2%	4.2%
Country of Birth – India	1.5%	-	0.7%	2.1%	1.4%
Country of Birth – Germany	0.5%	-	-	0.5%	0.5%
Country of Birth – Ireland	0.5%	-	-	0.3%	0.3%
Country of Birth – Italy	0.5%	-	-	1.4%	0.9%
Country of Birth – USA	-	1.3%	-	0.3%	0.4%

<http://www.abs.gov.au/websitedbs/censushome.nsf/home/quickstats>

Similarly in the Sea Lake and Nandaly communities the parents of community members were also largely born in Australia. In the Sea Lake community 83.2% of residents had both parents born in Australia compared to 93.0% for Nandaly and 53.7% at the national level.

BIRTHPLACE OF PARENTS, STATED RESPONSES	Sea Lake	Nandaly	Buloke LGA	Victoria	Australia
Both parents born overseas	10.8%	3.1%	7.4%	38.1%	34.3%
Father only born overseas	4.1%	2.2%	3.4%	6.9%	7.0%
Mother only born overseas	1.9%	1.8%	2.8%	4.6%	4.9%
Both parents born in Australia	83.2%	93.0%	86.5%	50.4%	53.7%

<http://www.abs.gov.au/websitedbs/censushome.nsf/home/quickstats>

Reflecting rates for 'country of birth' and 'birthplace of parents' 91.1% of homes in Sea Lake and 100.0% of homes in Nandaly spoke 'English only' compared to 72.4% in Victoria and 76.8% nationally.

LANGUAGE SPOKEN AT HOME	Sea Lake	Nandaly	Buloke LGA	Victoria	Australia
English only spoken at home	91.1%	100.0%	94.9%	72.4%	76.8%
Households where two or more languages are spoken	4.5%	-	2.9%	25.7%	20.4%
Malayalam	0.6%	-	0.4%	0.2%	0.1%
German	0.5%	-	-	0.4%	0.4%
Afrikaans	0.5%	-	-	0.1%	0.2%
Greek	0.5%	-	-	2.2%	1.2%
Italian	0.5%	-	0.2%	2.3%	1.4%

<http://www.abs.gov.au/websitedbs/censushome.nsf/home/quickstats>



CENSUS DATA – family composition

Both the Sea Lake and Nandaly communities displayed higher numbers of 'couple families without children' than was the case at the state and national levels, a reflection of the ageing population where adult children have left home. Whilst Nandaly displayed lower rates of 'one parent families' (10.9%) than seen at the state and national levels the rate of 'one parent families' in Sea Lake (14.8%) was close to the State and national figures.

FAMILY COMPOSITION	Sea Lake	Nandaly	Buloke LGA	Victoria	Australia
Couple families without children	48.8%	40.6%	49.2%	36.7%	37.8%
Couple families with children	34.0%	48.4%	39.2%	46.0%	44.6%
One parent families	14.8%	10.9%	10.3%	15.5%	15.9%
Other families	2.5%	0.0%	1.2%	1.8%	1.7%

<http://www.abs.gov.au/websitedbs/censushome.nsf/home/quickstats>

One parent families in the Sea Lake State Suburb displayed similar rates of being male led (16.0%) state (17.2%) and national (17.6%) counterparts. By contrast all one parent families in Nandaly were female led.

SINGLE (OR LONE) PARENTS	Sea Lake	Nandaly	Buloke LGA	Victoria	Australia
Male	16.0%	0.0%	16.0%	17.2%	17.6%
Female	84.0%	100.0%	84.0%	82.8%	82.4%

CENSUS DATA – income and housing

Whilst the Nandaly State Suburb showed an income profile similar to that seen at the state and national levels in terms of household incomes less than \$600 this was not the case for Sea Lake. In the Sea Lake community 41.7% of the population had a 'household income of less than \$600 gross per week' compared to only 23.7% nationally. Similarly in Sea Lake only 3.1% of the population had household income above \$3,000 per week compared to 11.2% nationally, for Nandaly this figure was 3.7%.

Across all median income ranges (including individual, family and household) Sea Lake incomes were lower than incomes witnessed at the Nandaly, state and national levels.

INCOME (people aged 15yrs and over)	Sea Lake	Nandaly	Buloke LGA	Victoria	Australia
Median Individual Income (\$/week)	\$416	\$591	\$406	\$561	\$577
Median Family Income (\$/week)	\$900	\$1,109	\$959	\$1,460	\$1,481
Median Household Income (\$/week)	\$710	\$1,113	\$742	\$1,216	\$1,234
Household income less than \$600 gross/wk	41.7%	22.0%	40.5%	23.8%	23.7%
Household income more than \$3,000 gross/wk	3.1%	3.7%	2.6%	10.4%	11.2%

<http://www.abs.gov.au/websitedbs/censushome.nsf/home/quickstats>

Whilst income levels in Sea Lake were below state and national levels so to were some measures of income stress such as rent:income and mortgage:income ratios.



No Nandaly households paid a rent or mortgage of '30% or more than household income' and only 1.7% of Sea Lake households paid rent which was '30% or greater than household income' compared to national levels of 10.4%, 4.2% of Sea Lake households paid mortgages '30% or greater than household income' compared to 9.9% nationally.

DWELLING CHARACTERISTICS - OCCUPIED PRIVATE DWELLINGS	<i>Sea Lake</i>	<i>Nandaly</i>	<i>Buloke LGA</i>	<i>Victoria</i>	<i>Australia</i>
Median rent (\$/weekly)	\$75	\$0	\$100	\$277	\$285
Households where rent payments are less than 30% of household income	98.3%	100%	97.6%	90.9%	89.6%
Households where rent payments are 30%, or greater, of household income	1.7%	0.0%	2.4%	9.1%	10.4%
Median housing loan repayment (\$/monthly)	\$650	\$2,080	\$737	\$1,700	\$1,800
Households where mortgage payments are less than 30% of household income	95.8%	100%	96.6%	89.9%	90.1%
Households where mortgage payments are 30%, or greater, of household income	4.2%	0%	3.4%	10.1%	9.9%
Average number of bedrooms per dwelling	3.1	3.5	3.1	3.0	3.1
Average number of people per household	2.2	2.6	2.3	2.6	2.6

<http://www.abs.gov.au/websitedbs/censushome.nsf/home/quickstats>

No 'state or territory housing authority' dwellings are available in the Sea Lake and Nandaly communities compared to state (10.6%) and national (13.7%) rates. Higher rates of 'other landlord type' occur in Sea Lake (42.2%) than at the state (3.2%) and national levels (4.9%). More than half (57.8%) of homes rented in the Sea Lake State Suburb and 100% of homes in the Nandaly State Suburb are rented from a 'person not in same household' compared to 22.7% nationally.

LANDLORD TYPE - OCCUPIED PRIVATE DWELLINGS BEING RENTED (including rent free accommodation)	<i>Sea Lake (45)</i>	<i>Nandaly (14)</i>	<i>Buloke LGA (449)</i>	<i>Victoria</i>	<i>Australia</i>
Real estate agent	0.0%	0.0%	16.3%	61.4%	54.3%
State or Territory housing authority	0.0%	0.0%	12.7%	10.6%	13.7%
Person not in same household	57.8%	100%	44.8%	20.9%	22.7%
Housing co-operative/community/church group	0.0%	0.0%	2.9%	1.7%	2.2%
Other landlord type	42.2%	0.0%	15.4%	3.2%	4.9%
Landlord type not stated	0.0%	0.0%	8.0%	2.2%	2.2%

Developed from Basic Community Profiles, sourced
<http://www.abs.gov.au/websitedbs/censushome.nsf/home/communityprofiles?opendocument&navpos=230>

NUMBER OF REGISTERED MOTOR VEHICLES (per household)	<i>Sea Lake</i>	<i>Nandaly</i>	<i>Buloke LGA</i>	<i>Victoria</i>	<i>Australia</i>
None	12.0%	0.0%	6.7%	8.4%	8.6%
1 motor vehicle	36.0%	17.2%	31.7%	34.7%	35.8%
2 motor vehicles	30.0%	32.2%	34.9%	37.0%	36.1%
3 or more vehicles	15.0%	46.0%	22.9%	16.8%	16.5%
Number of motor vehicles not stated	7.1%	4.6%	3.8%	3.0%	3.0%

<http://www.abs.gov.au/websitedbs/censushome.nsf/home/quickstats>



Despite its isolation 12.0% of households in the Sea Lake State Suburb are without a registered motor vehicle.

CENSUS DATA – education and internet

The key observation regarding education institution attendance is the lower levels of adult education occurring within the Buloke LGA and the Sea Lake and Nandaly State Suburbs than is the case at state and national levels. The highest rates of adult education (within the Northern Buloke SLA) were occurring in Sea Lake.

EDUCATION TYPE (of those people attending an educational institution)	Sea Lake	Nandaly	Buloke LGA	Victoria	Australia
Pre-school	5.4%	4.6%	6.8%	5.6%	5.1%
Primary - Government	15.0%	35.4%	25.2%	16.8%	18.2%
Primary - Catholic	10.2%	4.6%	7.3%	5.8%	5.5%
Primary - Other Non Government	2.0%	0.0%	0.3%	2.8%	3.3%
Secondary - Government	16.3%	21.5%	27.2%	12.0%	11.9%
Secondary - Catholic	0.0%	16.9%	0.8%	5.1%	4.7%
Secondary - Other Non Government	0.0%	0.0%	0.2%	4.3%	3.9%
Technical or further education institution	6.1%	4.6%	3.2%	7.3%	7.3%
University or tertiary institution	8.2%	4.6%	4.6%	15.2%	14.3%
Other	2.0%	0.0%	1.7%	3.1%	2.5%
Not Stated	34.7%	7.7%	22.6%	22.0%	23.2%
Total persons attending an educational institution	23.9% of the pop.	28.4% of the pop.	25.1% of the pop.	30.2% of the pop.	30.2% of the pop.

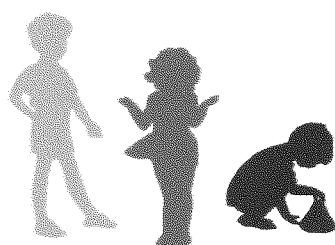
<http://www.abs.gov.au/websitedbs/censushome.nsf/home/quickstats>

In the Sea Lake State Suburb 40.3% of homes (108) stated they had 'no internet connection' compared to only 19.6% of Victorian homes and 19.7% of Australian homes. In the Nandaly State Suburb 24.7% of homes (22) stated they had 'no internet connection' compared to only 19.6% of Victorian homes and 19.7% of Australian homes. These figures demonstrate an increasing onus on services delivering kindergarten programs to provide access to technology as identified as critical within the NQF.

	Sea Lake	Nandaly	Mildura LGA	Victoria	Australia
No Internet connection	108 (40.3%)	22 (24.7%)	5,626 (29.2%)	381,905 (19.6%)	1,525,107 (19.7%)
Type of Internet connection:					
Broadband	132	53	11,272	1,361,967	5,424,509
Dial-up	4	4	609	58,588	235,401
Other	6	6	821	74,314	303,047
Total	142	63	12,702	1,494,869	5,962,954
Internet connection not stated	18	4	922	67,912	272,254
Total	268	89	19,250	1,944,686	7,760,322

Developed from Basic Community Profiles, sourced

<http://www.abs.gov.au/websitedbs/censushome.nsf/home/communityprofiles?opendocument&navpos=230>



CENSUS DATA - disadvantage

Between the 2006 and 2011 Census periods there has been some improvement in the levels of disadvantage experienced within the Buloke Shire. Based on 2006 Index of Relative Socio-Economic Disadvantage (IRSD) figures the Buloke Shire was the 21st most disadvantaged LGA of 79 LGAs in Victoria with a **decile of 3** and a **percentile of 26**. By 2011 the Census data revealed a LGA with slightly decreasing levels of disadvantage. Recently released SEIFA data noted Buloke Shire as the 22nd most disadvantaged LGA in Victoria with a **decile of 3** and a **percentile of 28** based on the SEIFA measure of Index of Relative Socio-Economic Disadvantage. Applying the Index of Relative Socio-Economic Advantage and Disadvantage (IRSAD) the Buloke Shire would rank as the 22nd most disadvantaged LGA in Victoria, falling in the highest 30% of disadvantaged LGAs (a significant improvement on the 2006 SEIFA data where the Buloke Shire ranked as the 8th most disadvantaged LGA for this measure, sitting in the highest 10% of disadvantaged LGAs).

The Buloke Shire is further delineated into two Statistical Local Areas (SLAs), Buloke North and Buloke South. Buloke North captures the Sea Lake, Nandaly and Berriwillock communities and so best reflects both the Early Years population accessing the Sea Lake Preschool and also the 'Northern Buloke' AEDI data area. Within the SEIFA data the levels of disadvantaged experienced by the two SLAs within the Buloke Shire are largely similar.

According to Census SEIFA IRSD figures across the Buloke North SLA the least disadvantaged community was Nandaly (which sat in the 7th decile of disadvantage). By contrast the community of Sea Lake experienced the highest levels of disadvantage and sat in the 1st decile of disadvantage – the most disadvantaged 10% of State Suburbs in Victoria.

See tables 1 & 2 in Appendix 1.



AUSTRALIAN EARLY DEVELOPMENT INDEX DATA

The Australian Early Development Index (AEDI) is a measure of how young children are developing in different communities. Like a census, it involves collecting information to help create a snapshot of early childhood development across Australia. The AEDI is a population measure of children's development as they enter school. Based on the scores from a teacher-completed checklist, the AEDI measures five areas, or domains, of early childhood development:

- physical health and wellbeing
- social competence
- emotional maturity
- language and cognitive skills (school-based)
- communication skills and general knowledge.

In 2012 the AEDI was completed nationwide for the second time. The first AEDI occurred in 2009 and resulted in a national commitment to repeat the data collection every three years. All data presented in this report is drawn from the 2012 AEDI data collection round and as such is the most recent available.

<i>Developmentally vulnerable on one or more or two or more domain/s</i>				
	One or more domain/s		Two or more domains	
	Number of children	Developmentally vulnerable	Number of children	Developmentally vulnerable
Australia	272,282	22.0	273,275	10.8
Victoria	63,584	19.5	63,889	9.5
Buloke	81	24.7	81	14.8
Northern Buloke	41	31.7	41	17.1

Note the AEDI area 'Northern Buloke' does not reflect the Sea Lake State Suburb as defined within the Census but is the smallest geographical region available within the AEDI from which to drawn data. The Northern Buloke area within the AEDI data reflects the following communities: Banyan, Berriwillock, Birchip, Culgoa, Jeffcott North, Kinnabulla, Nandaly, Nullawil, Sea Lake, Watchem, Wycheproof.

According to 2012 AEDI data children in the Northern Buloke area are not faring as well as their LGA, Victorian and national counterparts in terms of developmental vulnerability on 'one or more domain/s'. In all 31.7% of Northern Buloke children are vulnerable on 'one or more domain/s' compared to 24.7% at the LGA level, 19.5% at the Victorian level and 22.0% nationally. At the 'on two or more domains' measure this pattern of vulnerability was similar for Northern Buloke children with 17.1% considered vulnerable compared to 14.8% at the Buloke LGA level, 9.5% at the Victorian level and 10.8% nationally. The detail of each specific domain is outlined in the table below.



Domain	Geography	Number of children	Median Score	Developmentally vulnerable	Developmentally at risk	On track	
				Below 10 th Percentile	Between 10 th and 25 th percentile	Between 25 th and 50 th percentile	Above 50 th percentile
Physical Health and Wellbeing	Australia	273,922	9.6	9.3	13.4	19.5	57.8
	Victoria	64,061	10.0	7.8	11.1	18.7	62.5
	Buloke	81	9.6	12.3	22.2	14.8	50.6
	Northern Buloke	41	8.3	<u>14.6</u>	36.6	14.6	34.1
Social Competence	Australia	273,534	9.2	9.3	14.3	21.9	54.6
	Victoria	63,896	9.4	8.1	13.3	21.5	57.1
	Buloke	81	9.2	12.3	9.9	28.4	49.4
	Northern Buloke	41	8.8	<u>17.1</u>	9.8	39.0	34.1
Emotional Maturity	Australia	272,682	8.7	7.6	14.2	24.2	53.9
	Victoria	63,775	8.8	7.2	13.5	23.3	56.1
	Buloke	81	8.4	12.3	17.3	28.4	42.0
	Northern Buloke	41	7.9	<u>19.5</u>	22.0	22.0	36.6
Language and Cognitive Skills	Australia	273,896	9.6	6.8	10.6	21.7	60.9
	Victoria	64,195	9.6	6.1	9.9	19.4	64.6
	Buloke	81	9.2	11.1	7.4	18.5	63.0
	Northern Buloke	41	9.2	<u>12.2</u>	7.3	24.4	56.1
Communication Skills and General Knowledge	Australia	273,855	9.4	9.0	16.3	18.7	56.0
	Victoria	64,083	9.4	8.0	14.6	16.7	60.7
	Buloke	81	9.4	8.6	22.2	12.3	56.8
	Northern Buloke	41	8.8	7.3	31.7	12.2	48.8

Northern Buloke children through the 2012 AEDI data were assessed as more developmentally vulnerable than their LGA, State and national counterparts in four of five possible AEDI domains.

In the domain of Physical Health and Wellbeing 14.6% of Northern Buloke children were developmentally vulnerable compared to their LGA (12.3%), state (7.8%) and national (9.3%) counterparts.

In the domain of Social Competence 17.1% of Northern Buloke children were developmentally vulnerable compared to their LGA (12.3%), state (8.1%) and national (9.3%) counterparts.

In the domain of Emotional Maturity 19.5% of Northern Buloke children were developmentally vulnerable compared to their LGA (12.3%), state (7.2%) and national (7.6%) counterparts.

In the domain of Language and Cognitive Skills 12.2% of Northern Buloke children were developmentally vulnerable compared to their LGA (11.1%), state (6.1%) and national (6.8%) counterparts.



Australian Early Development Census 2015 UPDATE

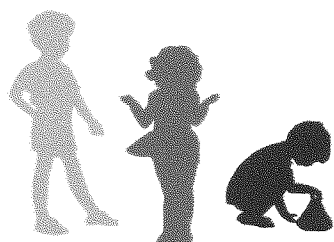
Location	Number of children	Percentage of children developmentally vulnerable (%)						
		Physical health and wellbeing *	Social competence	Emotional maturity	Language and cognitive skills (school-based)	Communication skills and general knowledge	Vulnerable on one or more domains of the AEDC	Vulnerable on two or more domains of the AEDC
Australia	302,003	9.7	9.9	8.4	6.5	8.5	22	11.1
Victoria	71,737	7.9	8.7	8	6.3	7.6	19.9	9.9
Buloke community	61	4.9	0	1.6	4.9	4.9	11.5	4.9
Northern Buloke	35	8.6	0	0	8.6	5.7	14.3	8.6

* AEDC data collection is less than 60% of the ABS five-year-old population. The AEDC may not accurately reflect the population of children; interpret with caution.

Comparison of AEDC data across 2009, 2012 & 2015

Legend: Significant increase No significant change Significant decrease

Year	Physical	Social	Emotional	Language	Communication	Vuln 1	Vuln 2
Developmentally vulnerable in 2009 (%)	24.00	4.00	16.00	12.00	12.00	40.00	20.00
Developmentally vulnerable in 2012 (%)	17.10	20.00	22.90	11.40	8.60	34.30	20.00
Developmentally vulnerable in 2015 (%)	8.60	0.00	0.00	8.60	5.70	14.30	8.60
2009 vs 2012 (%)	-6.90	16.00	6.90	-0.60	-3.40	-5.70	0.00
2012 vs 2015 (%)	-8.50	-20.00	-22.90	-2.80	-2.90	-20.00	-11.40
2009 vs 2015 (%)	-15.40	-4.00	-16.00	-3.40	-6.30	-25.70	-11.40



MY SCHOOL data - St Mary's School, Sea Lake

School profile

St Mary's Primary School is a small Catholic primary school in Sea Lake in Victoria's Mallee region. In 2013 St Mary's had an enrolment of 44 students from the Sea Lake parish which incorporates the towns of Sea Lake, Nandaly, Berrwilllock, Culgoa and Woomelang. Across the school there was a 91% student attendance rate with none of the student population identifying as ATSI or as from a 'language background other than English'. To support this enrolment there are 5 teaching staff working a 4.2 EFT and 5 non-teaching staff working a 2.0 EFT.

The school was originally established in 1958 by the Sisters of St Joseph and maintains a strong commitment to the core values of love, joy and peace. The school has a solid intervention program that incorporates extension and remediation programs. Whole school approaches in numeracy and literacy enable consistent and thorough planning and assessment.

Student background 2013

St Mary's Primary School received an ICSEA value of 981 compared to a national average ICSEA value of 1000. The table below outlines the distribution of St Mary's students against the national disadvantage profile. Significantly only 10% of St Mary's students present into the top quarter compared to 25% of students nationally.

<i>Distribution of students</i>				
	Bottom quarter	Middle quarters		Top quarter
St Mary's Primary School Distribution	36%	34%	21%	10%
Australian Distribution	25%	25%	25%	25%

<http://www.myschool.edu.au/SchoolProfile/Index/77045/StMarysSchool/45924/2013> (accessed 29/03/2014).



NAPLAN results – St Mary’s Sea Lake

The National Assessment Program – Literacy and Numeracy (NAPLAN) assesses all students in Australian schools in Years 3, 5, 7 and 9. The chart below displays average NAPLAN scores for each domain for the St Mary’s Primary School, the school’s scores are written in blue. Also displayed are average scores for statistically similar schools (SIM) and all Australian schools (ALL). The coloured bars indicate whether the selected school’s scores are above, close to, or below the other scores (see key and guide to reading the table directly below this table).

	Reading		Persuasive Writing		Spelling		Grammar and Punctuation		Numeracy	
Year 3	397 340 - 454		439 394 - 483		395 345 - 446		437 378 - 496		419 375 - 463	
	SIM403 394 - 412	ALL 419	SIM401 393 - 409	ALL 416	SIM394 386 - 403	ALL 411	SIM412 402 - 421	ALL 428	SIM384 376 - 392	ALL 397
Year 5	478 439 - 517		511 475 - 546		490 454 - 526		497 456 - 539		495 464 - 526	
	SIM489 480 - 497	ALL 502	SIM463 455 - 472	ALL 478	SIM479 471 - 487	ALL 494	SIM484 475 - 493	ALL 501	SIM470 462 - 478	ALL 486

NAPLAN scores for the St Mary’s Primary School indicates students are; in all domains but reading; either close to, above or substantially above their colleagues at both similar and all Australian schools.

-	Student population below reporting threshold
	Year level not tested
<i>Selected school's average is</i>	
	substantially above
	below
	above
	substantially below
	close to

<http://www.myschool.edu.au/ResultsInNumbers/Index/77045/StMarysSchool/45924/2013> (accessed 29/03/2014)



MY SCHOOL data – Tyrrell College, Sea Lake

School profile

Tyrrell College, Sea Lake, is a unique school formed in 1994 from combining Berriwillock Primary School, Nandaly Primary School, Sea Lake Primary School and Sea Lake Secondary College. Drawing on a tradition of sharing and co-operation, and a history of innovation, these schools recognised that merging on a single site would provide enhanced educational opportunities for all students. The 2013 enrolment was 176 a figure slowly declining in line with Shire population statistics. There is a 94% student attendance rate and 2% of students identify as ATSI. No students are recorded as being from a 'language background other than English'.

In 2013 Tyrrell College had a 19.8 EFT teaching staff provided by 23 teachers and a 5.3 EFT of non-teaching staff provided by 7 staff members. Tyrrell College is a member of the Mallee Network in the Loddon Mallee Region. The College community has identified four key values - Respect, Responsibility, Doing Your Best and Honesty and Trustworthiness. This combines with the School motto "Your Opportunity to Succeed". Positive relationships amongst students, parent and staff are identified as keys to success.

Student background 2013

The Tyrrell College received an ICSEA value of 949 compared to a national average ICSEA value of 1000. The table below outlines the distribution of Tyrrell College students against the national disadvantage profile. Significantly only 5% of Tyrrell College students present into the top quarter compared to 25% of students nationally. This was the lowest proportion across the 5 communities cluster managed by MTHCS.

<i>Distribution of students</i>				
	Bottom quarter	Middle quarters	Top quarter	
Tyrrell College Distribution	50%	31%	14%	5%
Australian Distribution	25%	25%	25%	25%

<http://www.myschool.edu.au/SchoolProfile/Index/76348/TyrrellCollege/45203/2013> (accessed 29/03/2014).



NAPLAN results – Tyrrell College

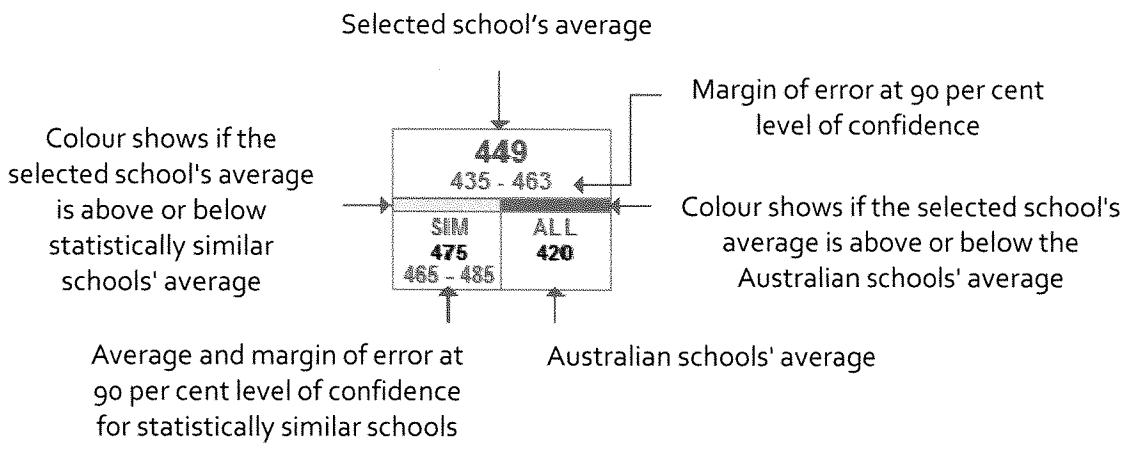
The National Assessment Program – Literacy and Numeracy (NAPLAN) assesses all students in Australian schools in Years 3, 5, 7 and 9. The chart below displays average NAPLAN scores for each domain for the Tyrrell College, the school's scores are written in blue. Also displayed are average scores for statistically similar schools (SIM) and all Australian schools (ALL). The coloured bars indicate whether the selected school's scores are above, close to, or below the other scores (see key and guide to reading the table directly below this table).

	Reading		Persuasive Writing		Spelling		Grammar and Punctuation		Numeracy	
Year 3	452 407 - 497		410 376 - 443		417 379 - 455		467 422 - 511		423 387 - 458	
	■	■	■	■	■	■	■	■	■	■
	SIM392 383 - 401	ALL 419	SIM390 382 - 399	ALL 416	SIM383 375 - 392	ALL 411	SIM399 390 - 409	ALL 428	SIM374 366 - 383	ALL 397
Year 5	461 424 - 497		404 370 - 438		450 416 - 484		465 425 - 504		475 445 - 505	
	■	■	■	■	■	■	■	■	■	■
	SIM479 471 - 488	ALL 502	SIM452 444 - 460	ALL 478	SIM469 461 - 477	ALL 494	SIM472 463 - 482	ALL 501	SIM460 452 - 468	ALL 486
Year 7	551 523 - 578		528 498 - 559		573 545 - 602		550 519 - 581		563 538 - 589	
	■	■	■	■	■	■	■	■	■	■
	SIM515 507 - 522	ALL 541	SIM489 481 - 498	ALL 517	SIM523 515 - 531	ALL 549	SIM506 497 - 514	ALL 535	SIM515 507 - 523	ALL 542
Year 9	565 538 - 593		550 514 - 585		572 542 - 601		558 528 - 589		571 546 - 595	
	■	■	■	■	■	■	■	■	■	■
	SIM558 550 - 565	ALL 580	SIM517 508 - 527	ALL 554	SIM559 551 - 567	ALL 583	SIM541 532 - 549	ALL 573	SIM551 544 - 558	ALL 584

NAPLAN scores for Tyrrell College indicates above national average student performance at years 3 and 7, below average for year 5 and mostly close to the national average performance at the year 9 level.

- Student population below reporting threshold
 - Year level not tested
- Selected school's average is*
- substantially above
 - below
 - above
 - substantially below
 - close to





<http://www.myschool.edu.au/ResultsInNumbers/Index/76348/TyrrellCollege/45203/2013> (accessed 29/03/2014)

