




SERVING YOUR COMMUNITY

RSL Victoria Community Benefits Report 2008-2009

51st BATTALION A.I.F.
NEVER KNOWN BUT
NEVER FORGOTTEN. FOR MY
GRAND FATHER
JOHN ALPHONSO FRANCIS WALGHE
Regimental Stretcher Bearer
wounds 16th June 1917
in Battle of Messines.
LEST WE FORGET.



© RSL Victorian Branch

This work is copyright. Apart from any use as permitted under the Copyright Act 1968, no part may be reproduced by any process without prior written permission from the RSL Victorian Branch. Requests can be addressed to:

Marketing & Events Manager
RSL Victorian Branch
ANZAC House
4 Collins Street
MELBOURNE VIC 3000

or via email to rslvic@rslvic.com.au

WELCOME

The RSL continues to have a strong presence in Victoria, serving communities in every Local Government Area in the state. The work of caring for our serving and ex-serving mates continues to be relevant and needed.

I am consistently impressed by the dedication and achievements of our Sub-Branches with the level of support provided to their local communities, and am proud to be associated with an organisation whose main goal and day to day objective is about helping those in need.

Sub-Branches often go about this work in a quiet fashion, so we thought it important to share with Victorians how much goes on behind the scenes and the amount of resources, financial and physical, donated to the ex-serving and wider community.

The following pages give you an insight into a number of the programs, donations and volunteer hours that were contributed in 2008-2009 and will demonstrate the strength of the RSL commitment to the Victorian community now, and in the future.

Kind regards,

Major General David McLachlan AO (Retd)
State President
RSL Victoria



CONTENTS

Introduction	4
Commemoration & Unification	6
Employment Security	8
RSL & Education	10
Community Contributions	14
Our Mission: Veterans Support	16
Membership	18
RSL Sub-Branches by Local Government Area	21
With Thanks	24



From Mallacoota to Mildura, from Casterton to Corryong,
the RSL is present in your Victorian Community

INTRODUCTION

Our Mission

The mission of the RSL is to support the well being and betterment of our members - serving and ex-serving men and women of the ADF, our Allies and their families - with the provision of welfare and commemorative services and, where appropriate, contribute to worthy needs within the broader community.

Throughout the following pages you will see how the RSL goes about living this mission day to day and achieving the objectives set by the League.

Our Sub-Branches

What may surprise many is the level of support RSL Sub-Branches provide to the community at large throughout Victoria. There is at least one RSL Sub-Branch located in every Local Government Area in the state of Victoria and each one has a strong presence within their community. With over 300 Sub-Branches, and 110 of these being licensed Sub-Branches, there is an RSL nearby ready to welcome you.

*See back pages for geographic spread of Sub-Branches by LGA

Your local RSL Sub-Branch is a multi purpose venue providing a place for companionship and a safe, welcoming environment for socialising within your community. The doors are open to young and old. However, the fact that the majority of Sub-Branches are a major contributor to the prevention of social isolation of veterans and seniors within the community cannot be ignored.

Our Communities

RSL Sub-Branches understand the significance of their presence in the community and recognise their role in the provision of the welfare and comradeship of both serving and ex-serving men and women of the ADF, our Allies and their families, as well as the education of the public in particular young people, on the sacrifices that have been endured on their behalf and the significance of days of remembrance.

All of these things aim to promote a living community spirit and uphold the values of respect for each other and support of your mates.

RSL Sub-Branches provide significant financial support to the ex service community, not only within their own Sub-Branches but by supporting organisations such as Legacy, War Widows, Vietnam Veterans' Association, Darwin Defenders, Weary Dunlop Foundation and regional veterans' centres around Victoria.

Personal, financial and moral support is provided to members and veterans within the community through activities such as:

- Welfare support
- Advice on pensions and entitlements
- Home and hospital visiting services
- Day Clubs
- Exercise and computer clubs
- Providing RSL ritual funeral services for ex-servicemen & women
- Health information and nursing home advice
- Home maintenance
- Transportation services
- Opportunities to volunteer
- And many more

In addition to veterans and local community support here are just a few of the major charitable organisations supported by RSL Sub-Branches:

CFA
Red Cross
Salvation Army
Very Special Kids
National Breast Cancer Foundation
Prostate Cancer Foundation of Australia
Royal Children's Hospital
Neighbourhood Watch
SES
Relay for Life
Reclink

\$1.78 million was donated in financial assistance to non veteran related charitable or local organisations in 2008-2009 along with \$1.6 million in-kind support.



30% of the Victorian RSL network have increased their volunteer numbers in 2008-2009. These volunteers throughout Victoria have provided 1.11 million hours to the veteran and wider community equating to \$22.23 million in volunteered time.

COMMEMORATION & UNIFICATION

Over many years Australia has developed into an extremely multicultural society. The RSL has endeavoured to embrace the changing face of Australia whilst upholding a strong patriotic connection to our history and heritage.

Through commemoration services held on ANZAC Day and Remembrance Day each year, Australians from all walks of life come together to remember the fallen and those currently protecting Australia to provide a safe haven for our communities.

Although not a large Sub-Branch, the volunteers at Torquay RSL Sub-Branch coordinate the largest Dawn Service after the Shrine of Remembrance Service. Their dawn service held at Point Danger is attended by 8,000 people each year and growing.

Meanwhile the Dawn Service in Melbourne continues to attract a growing crowd of younger patrons. On 25 April 2009, the estimated attendance was at 35,000.

Remembrance into the Future

A task many RSLs see as their duty is the maintenance and upholding of war related cenotaphs and monuments in the local town. It is the dedication of those at the RSL and their attention to detail that provides our towns with the ability to feel proud that they can commemorate those fellow community members who did not return to their home town.

In a move to continue commemoration, students from the Geelong Baptist College have adopted the banner of the Darwin Defenders and will ensure it is carried in future ANZAC Day marches to represent the Darwin Defenders at all commemoration services.

Growing Together

In an endeavour to enhance their relationship with the multi-cultural population in the area, Springvale RSL has established a community and remembrance garden in partnership with the local community and religious groups.

This garden provides the ability to supply the needy with free fresh vegetables grown with care in this specially established garden, maintained by a committee comprising the RSL Veterans Centre and the Springvale Indochinese Mutual Assistance Association.

The remembrance garden commemorates the fallen soldiers of the Indo-China theatre of war, reflecting on the sympathies and common link of loss in our communities.

Geelong Baptist College Students carrying the Darwin Defenders banner on ANZAC Day



Pension Officer Michael Custance tending to the Springvale RSL community garden



“The pride and community spirit of our small town has been re-kindled with the unveiling of our own cenotaph”



Lest We Forget

EMPLOYMENT SECURITY

The licensed RSL Sub-Branch network in Victoria employs over 2,200 staff members in a variety of roles including operational service staff (bar/bistro/gaming), venue management, welfare coordinators, marketing & PR coordinators, function coordinators, maintenance, chefs & kitchen staff, HR and administration. The scale of licensed Sub-Branches and number of employees equates to \$83.5 million in wages paid to staff of licensed RSL Sub-Branches in Victoria.

Through 2008/2009 Australia encountered the Global Financial Crisis. Business suffered in all industries and 5.9% of Victorians found themselves unemployed*.

During this 12 month period the RSL in Victoria remained a strong employer in the hospitality industry:

- 64% of licensed Sub-Branches stated their employment levels remained static
- 18% of licensed Sub-Branches stated their employment levels increased
- 18% of licensed Sub-Branches stated their employment levels decreased

In the areas of Mildura and Ararat, these Sub-Branches employ over 40 staff per Sub-Branch and in communities such as these it provides a big difference to the opportunities presented to the town providing stable, long term employment with opportunity for training and skill advancement.

* Source: Australian Bureau of Statistics, State and Regional Indicators June 2009

Opportunity Awaits

Bentleigh RSL Sub-Branch is an example of the licensed Sub-Branches providing training opportunity for their employees with five staff members recently completing a Certificate 3 in Hospitality.

For a growing and developing Sub-Branch, Bentleigh see the need for and benefits of training their staff to provide further expertise and operational excellence throughout the Sub-Branch.

The Licensed Sub-Branches Association Executive Committee have set in place a Training Sub-Committee to plan and deliver training & development to management and supervisors all throughout the network.

The training committee continually develop annual programs to grow the strength of education and skill level within the RSL network, rivalling many competitors.

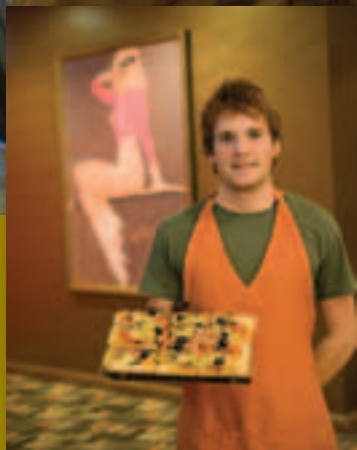
Women grow

At the 2008 Licensed Sub-Branches Association Hall of Fame Awards, 11 Achievement & Recognition Awards were presented. These awards recognise outstanding achievements by a paid staff member who has been employed for at least two years with their respective Sub-Branch.

73% of the 2008 Achievement & Recognition winners were female.

In addition 23% of Sub-Branch managers within the licensed Sub-Branch Network are female, with some managing more than one location, proving the RSL to be an employer of choice for both men and women.

“My hospitality certificate and training at the Bentleigh RSL allows me to advance my skill set and provides opportunities to assist and train my colleagues to consistently increase our level of service to our members”
Michael, Bentleigh RSL



RSL & EDUCATION

The RSL Charter on Youth states that we must seek opportunities at all levels within the League structure, and in our local communities to originate, support and encourage youth activities to ensure achievement of our objectives.

Education through RSL activities continues for the young and the old in the community. For all attending commemoration services and becoming involved with the RSL in any way provides a level of education on our serving defence forces, our veteran community, who we are as a nation and how we can help our community.

In the 08/09 financial year licensed Sub-Branches contributed \$386,762 to school programs and scholarships throughout Victoria in varying amounts to 160 primary and secondary schools.

In addition to financial support we believe almost every Sub-Branch in Victoria provides in-kind assistance to local schools by way of talks and education programs, involvement in commemoration services inside or outside the school, discussions surrounding memorabilia and involvement in community programs such as day clubs and computer clubs.

University Assistance in Sunraysia

Mildura RSL Sub-Branch provides a structured scholarship program for local La Trobe University students: The Mildura RSL Scholarship and the Mildura RSL Kenneth Wallace Stewart Aboriginal or Torres Straight Islander Scholarship. Both scholarships award a first year Bachelor of Education student a bursary of \$2000 towards their studies to help reduce the financial concerns they might otherwise have had to deal with. Applicants for these scholarships must reside in the Sunraysia region, be involved with and interested in the community and have a present or past link to a member of the ADF.

In the large coastal community of Geelong, the Geelong RSL Sub-Branch has donated \$250 to local primary schools for distribution to low income families, equating to \$10,000 for the 2008 year.

In addition they have developed a program with Geelong Baptist College Called "The Edge". The program sees year 9 & 10 students involving themselves in the local veteran community visiting aged care facilities, recording their war history and creating an "Avenue of Honour" within the facility. The students have developed quite a relationship with the veterans taking a great interest in their stories and hearing of their experiences.

Memorial Scholarships

In the City of Monash, Waverley RSL Sub-Branch run the Norman A. Smith Memorial Scholarship which was established in 1986 to honour Norm, who worked tirelessly assisting ex-service men and women from the time he joined the RSL in 1947 until his death in 1982. His interest lay particularly with welfare and activities of young people. In the wider community, Norm encouraged young people to take an interest and participate in sporting activities.

Being a keen reader and a debater on matters of public interest, it is most fitting that he is remembered with a scholarship aimed at supporting students to continue their education into tertiary studies and become leading members of a profession or trade.

The scholarship awards a student from the City of Monash a \$5,000 bursary (paid over the final 2 years of schooling) to assist with and encourage academic performance. To be awarded the scholarship students must complete a research assignment on a service person from their local area and also pass a written history and general knowledge examination.

Students who have been awarded this scholarship have since returned to the Sub-Branch on many occasions to continue their connection and many now have very successful careers. For example, one recipient is now an expert on international taxation law and another has had significant achievements in a diplomatic role.



Mildura RSL Kenneth Wallace Stewart Aboriginal or Torres Straight Islander Scholarship recipient.
Lauren Gilson pictured with Mildura RSL President Allan Wilson, Mrs Stewart and manager Kim Archibald.

SERVING YOUR COMMUNITY



ANZAC Day



ANZAC Day



Opening of the Springvale RSL Remembrance Garden



ANZAC Day



Friendly service at Waverly RSL



Exercises in the Waverly RSL Day Club



Bentleigh RSL's Internet Café



Remembrance Garden, Springvale RSL



Community Garden, Springvale RSL

A range of services, facilities and social activities cater to the needs and interests of our 100,000+ members across Victoria.

COMMUNITY CONTRIBUTIONS

Time and space

Donations do not always come in the form of cash. All licensed Sub-Branches across the RSL network provide their facilities free of charge to a number of other community organisations for their regular meetings, training sessions or social functions.

As the RSL and their committees understand, a number of these community groups such as Probis, Rotary, Women's Auxiliaries etc would not have a place to meet should the RSL not provide this facility to their group. This equates to \$895,000 in room hire subsidies and some \$1.58 million in catering and entertainment subsidies for these and many more community groups.

Safety and Comfort

For many in the community their local RSL Sub-Branch is a facility they can visit that they feel comfortable and safe. The licensed Sub-Branch network is continually striving to improve the quality of their facilities for members to provide a welcoming environment for veterans, seniors, families and all members of the community.

In 2008/2009 \$12.5 million was spent on Sub-Branch redevelopments and facility improvements. In addition to large property overhauls, this money went to projects such as installation of new amenities, upgrading of furniture and carpets, improvements to alfresco dining areas, signage, lighting and installation of café areas.

Victoria's Black Saturday

Following the disasters of Black Saturday, RSL Victoria immediately acted to create a Bushfire Disaster Relief Fund. Donations were received from large and small Sub-Branches all over the Nation, corporate partners and from individuals.

Funds raised through this program totalled \$333,438 and were distributed to not only veterans affected by the fires but members, RSL staff and their families. Approximately 65 families and individuals have benefited from these funds since the fires.

Apart from immediate payments of \$1,500 to those families in need, additional funding requests were processed to facilitate payments for emergency housing, medical expenses, food, clothing, fencing/property assistance and transport.

One family who had lost everything, but thankfully not each other, were donated monies to fund a family holiday to the Gold Coast to take a break from the traumatic reminders the children faced each day.

An ex-serviceman who lost his family and suffered severe personal injuries has been assisted by the RSL covering travel costs for additional family to be with him and a substantial donation made to his trust fund.

Another ex-serviceman who was devastated by the loss of his medals in the fire was assisted through the RSL network to have them replaced. The joy that these replacement medals brought to this man cannot be put into words.

During this devastating time the Healesville RSL Sub-Branch management and staff demonstrated the full meaning of mateship when they swung into action to assist people fighting the fires and to help the local community dealing with the terrible aftermath of Black Saturday.

Healesville RSL closed its commercial operations and operated as a base 24 hours a day, 7 days a week, serving up to 800 meals per day to the DSE workers and volunteers. All staff volunteered their time whenever they could providing well over 500 hours of volunteer labour.

Closer to home, they also dealt with some of their own members, staff and families who had suffered great losses in those terrible fires.

Emotionally it was the most difficult of times, and yet the Committee, management and staff still recognised that it was the duty of the Healesville RSL to do whatever they could, to help their mates and the community.



\$12.5 million in redevelopments in 2008-2009 means improved facilities for our members and the community

OUR MISSION: VETERANS SUPPORT

All veterans have done their bit for our nation and now require assistance from the community. Veterans are a proud and independent group of people who have never before had to ask anyone for help but age and the rising cost of living in today's society has necessitated the need for them to seek some form of assistance. That's where the RSL steps in.

Advocacy

One of the major objectives of the League is to ensure that members of the ex-service community have access to compensation advice and assistance.

Through its Veterans Welfare & Entitlement Support Department, the Victorian Branch provides welfare, pensions and advocacy support services from which, both serving and ex-serving members and/or their dependants can obtain advice and assistance, at no cost, regarding welfare and compensation entitlements. The service is also available to assist, or to provide information or guidance to RSL Sub-Branches throughout Victoria, or to other ex-service organisations as required.

In 2008 RSL Advocates handled 253 veterans matters at the Veterans Review Board, the majority of these receiving a positive outcome.

Localised assistance

Many Sub-Branches have also set up their own localised Welfare & Support Centres. One such Sub-Branch is Springvale RSL who fund and support the Springvale RSL Welfare & Support Centre located next to the Sub-Branch. In this centre there is one Level 2 TIP (Training & Information Program) trained Case Officer and three additional Welfare Officers, all of whom are volunteers.

Case Officer Michael Custance processes numerous pension claims for the local community and, volunteering two days each week, divides his time between cases for the Springvale RSL community and the Berwick RSL community.

In addition to the entitlement and claims support, the Springvale RSL Welfare & Support Centre provides home maintenance, provision of mobility aids and wheelchairs and home visitations.

One case of support is that of a veteran's widow who was having difficulty going out into the backyard due to mobility issues and the stability of a large step. The Springvale RSL Centre responded to a call for help to ensure a new backdoor and patio was installed so the widow could safely step out into the backyard without risk of injury. It's small comforts like these that make a big difference to someone's day to day living.

Checking in

Waverley RSL Sub-Branch run a great initiative called the "Over 80's register". All members who are over 80 years of age are added to this register and, particularly those who are unable to frequently visit the RSL, are contacted on a regular basis to make sure they are doing well.

Pat Walsh is the volunteer member who makes these calls and enjoys his role in the RSL and the fact that he can help out.

He says "I retired a few years ago and the Over 80's register is a project that keeps me active and involved in the community. Something so simple as a quick phone call can reassure those more isolated that the RSL is there if they need anything."

Through these contact phone calls Pat has been able to identify if someone is feeling down or that perhaps something is not quite right. Where family members are present and involved, the Sub-Branch does not interfere. However, on occasion a follow up home visit has been able to lift spirits and identify any areas needing attention (e.g. home maintenance/safety or physical and mental health issues).

Over 6,000 telephone enquiries were received involving a range of topics from medals, pension entitlements and aged care advice.



\$1.9 million was provided in direct grants to the veteran and senior community in Victoria in the 08/09 year

MEMBERSHIP

Traditionally the RSL was a club for those who had served in the Nations Defence Forces and our Allies.

Today the RSL today is open to all members of the community with different categories of membership to suit everyone.

Service

Service membership is open to all current and ex-serving Australian Defence Force and Allied Armed Forces personnel.

Affiliate

Affiliate membership is open to relatives of past or present serving personnel eligible for RSL Service membership, keeping that family link to the RSL alive. Emergency services personnel (Fire Brigade, Ambulance, Police, SES) with six months service are also eligible to become Affiliate members.

Social

Social membership is available for those that would like to be a part of their local RSL Sub-Branch on a social level. Social membership provides a number of the same benefits as Service and Affiliate, however the right to vote on RSL matters does not apply.

The RSL believe the future of membership lies in community members becoming involved as Affiliates. Assistance is available at most Sub-Branches for the public to gather certification and information on a family member who has served in the ADF.

The RSL Sub-Branches encourage the community to embrace this category of membership and become involved where they can at the Sub-Branch level.

Membership and more

Being a member at an RSL Sub-Branch doesn't have to stop at completing a form and receiving a membership card. Members are encouraged to learn more about the organisation they are now a part of and perhaps volunteer some time to an activity that they enjoy.

This could be something as simple as selling Poppies once a year, to brightening someone's day through a home or hospital visit. It could also mean becoming a part of the Sub-Branch committee to impart knowledge or expertise to the running of the Sub-Branch.

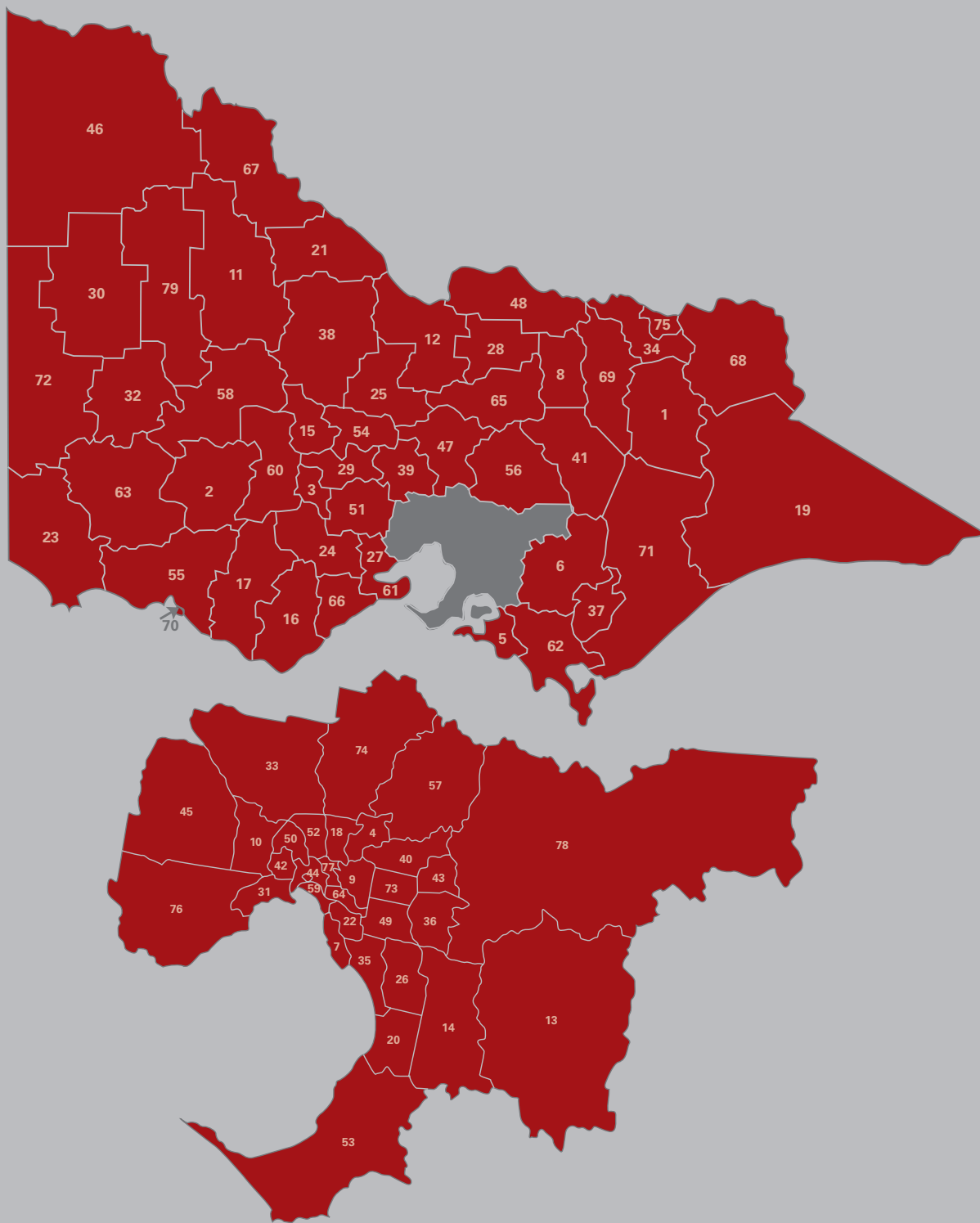
View the following pages for the location and geographical spread of RSL Sub-Branches throughout Victoria.





The RSL – You Are Welcome

ALL VICTORIAN COMMUNITIES ARE SERVED



Top: Local Government Areas - Victoria

Bottom: Local Government Areas - Melbourne

RSL SUB-BRANCHES BY LOCAL GOVERNMENT AREA

Following is a list of Sub-Branches ordered by Local Government. Licensed Sub-Branches with gaming are highlighted in red.

- 1 Alpine Shire Council**
 - Bright RSL Sub-Branch
 - Mount Beauty RSL Sub-Branch
 - Myrtleford RSL Sub-Branch
 - Omeo RSL Sub-Branch
 - Orbost RSL Sub-Branch
- 2 Ararat Rural City Council**
 - Ararat RSL Sub-Branch
 - Glenthompson RSL Sub-Branch
 - Lake Bolac RSL Sub-Branch
 - Willaura RSL Sub-Branch
- 3 Ballarat City Council**
 - Ballarat RSL Sub-Branch
 - Buninyong RSL Sub-Branch
 - Sebastopol RSL Sub-Branch
- 4 Banyule City Council**
 - Greensborough RSL Sub-Branch
 - Heidelberg RSL Sub-Branch
 - Ivanhoe RSL Sub-Branch
 - Montmorency RSL Sub-Branch
 - Watsonia RSL Sub-Branch
 - West Heidelberg RSL Sub-Branch
- 5 Bass Coast Shire Council**
 - Bass RSL Sub-Branch
 - Inverloch RSL Sub-Branch
 - Phillip Island RSL Sub-Branch
 - Wonthaggi RSL Sub-Branch
- 6 Baw Baw Shire Council**
 - Drouin RSL Sub-Branch
 - Longwarry RSL Sub-Branch
 - Mirboo North RSL Sub-Branch
 - Trafalgar/Thorpdale RSL Sub-Branch
 - Warragul RSL Sub-Branch
- 7 Bayside City Council**
 - Beaumaris RSL Sub-Branch
 - Hampton RSL Sub-Branch
- 8 Benalla Rural City Council**
 - Benalla RSL Sub-Branch
- 9 Boroondara City Council**
 - Balwyn RSL Sub-Branch
 - Camberwell RSL Sub-Branch
 - Hawthorn RSL Sub-Branch
 - Kew RSL Sub-Branch
 - North Balwyn RSL Sub-Branch
- 10 Brimbank City Council**
 - First Serbian RSL Sub-Branch
 - Sunshine RSL Sub-Branch
- 11 Buloke Shire Council**
 - Birchip RSL Sub-Branch
 - Charlton RSL Sub-Branch
 - Donald RSL Sub-Branch
 - Sea Lake RSL Sub-Branch
 - Wycheproof RSL Sub-Branch
- 12 Campaspe Shire Council**
 - Echuca/Moama RSL Sub-Branch Inc.
 - Girgarre RSL Sub-Branch
 - Gunbower RSL Sub-Branch
 - Kyabram RSL Sub-Branch
 - Rochester RSL Sub-Branch
 - Rushworth RSL Sub-Branch
 - Stanhope RSL Sub-Branch
 - Tongala RSL Sub-Branch
- 13 Cardinia Shire Council**
 - Bunyip RSL Sub-Branch
 - Cockatoo RSL Sub-Branch
 - Gembrook RSL Sub-Branch
 - Koo Wee Rup RSL Sub-Branch
 - Lang Lang RSL Sub-Branch
 - Nar Nar Goon RSL Sub-Branch
 - Pakenham RSL Sub-Branch
 - Upper Beaconsfield RSL Sub-Branch
- 14 Casey City Council**
 - Berwick RSL Sub-Branch
 - Cranbourne RSL Sub-Branch
- 15 Central Goldfields Shire Council**
 - Maryborough RSL Sub-Branch
 - Talbot RSL Sub-Branch
- 16 Colac Otway**
 - Apollo Bay RSL Sub-Branch
 - Birregurra RSL Sub-Branch
 - Colac RSL Sub-Branch
- 17 Corangamite Shire Council**
 - Camperdown RSL Sub-Branch
 - Cobden RSL Sub-Branch
 - Derrinallum RSL Sub-Branch
 - Skipton RSL Sub-Branch
 - Terang RSL Sub-Branch
- 18 Darebin City Council**
 - Darebin RSL Sub-Branch
 - Fairfield-Alphington RSL Sub-Branch
 - Northcote RSL Sub-Branch
 - Reservoir RSL Sub-Branch
- 19 East Gippsland Shire Council**
 - Bairnsdale RSL Sub-Branch
 - Cann River RSL Sub-Branch
 - Ensay/Swifts Creek RSL Sub-Branch
 - Lakes Entrance RSL Sub-Branch
 - Mallacoota RSL Sub-Branch
 - Metung RSL Sub-Branch
 - Paynesville RSL Sub-Branch
- 20 Frankston City Council**
 - Frankston RSL Sub-Branch
 - Peninsula Exservicewomen RSL Sub-Branch
 - Seaford RSL Sub-Branch
- 21 Gannawarra Shire Council**
 - Cohuna/Leitchville RSL Sub-Branch
 - Kerang & District RSL Sub-Branch
 - Koondrook RSL Sub-Branch
- 22 Glen Eira City Council**
 - Bentleigh RSL Sub Branch
 - Caulfield RSL Sub-Branch
- 23 Glenelg Shire Council**
 - Casterton RSL Sub-Branch
 - Heywood RSL Sub-Branch
 - Portland RSL Sub-Branch
- 24 Golden Plains Shire Council**
 - Inverleigh RSL Sub-Branch
 - Meredith RSL Sub-Branch
 - Rokewood RSL Sub-Branch
- 25 Greater Bendigo City Council**
 - Bendigo District RSL Sub-Branch
 - Elmore RSL Sub-Branch
 - Heathcote RSL Sub-Branch
 - Kangaroo Flat RSL Sub-Branch
- 26 Greater Dandenong City Council**
 - Dandenong RSL Sub-Branch
 - Noble Park RSL Sub-Branch
 - Springvale RSL Sub-Branch
- 27 Greater Geelong City Council**
 - Barwon Heads RSL Sub-Branch
 - Drysdale RSL Sub-Branch
 - Geelong RSL Sub-Branch
 - Lara RSL Sub-Branch
 - Norlane RSL Sub-Branch
 - Ocean Grove RSL Sub-Branch
 - Port Arlington - St Leonards RSL Sub-Branch

RSL SUB-BRANCHES BY LOCAL GOVERNMENT AREA

28 Greater Shepparton City Council

Dookie RSL Sub-Branch
Murchison RSL Sub-Branch
Shepparton RSL Sub-Branch
Tatura RSL Sub-Branch

29 Hepburn Shire Council

Clunes RSL Sub-Branch
Creswick/Smeaton RSL Sub-Branch
Daylesford RSL Sub-Branch

30 Hindmarsh Shire Council

Dimboola RSL Sub-Branch
Jeparit RSL Sub-Branch
Nhill RSL Sub-Branch
Rainbow RSL Sub-Branch

31 Hobsons Bay City Council

Altona RSL Sub-Branch
Newport RSL Sub-Branch
Spotswood/Kingsville
RSL Sub-Branch
Williamstown RSL Sub-Branch

32 Horsham Rural City Council

Horsham RSL Sub-Branch
Natimuk RSL Sub-Branch

33 Hume City Council

Sunbury RSL Sub-Branch

34 Indigo Shire Council

Beechworth RSL Sub-Branch
Kiewa RSL Sub-Branch
Rutherglen RSL Sub-Branch

35 Kingston City Council

Aspendale Edithvale RSL Sub-Branch
Chelsea RSL Sub-Branch
Cheltenham-Moorabbin
RSL Sub-Branch
Highett RSL Sub-Branch
Mentone RSL Sub-Branch

36 Knox City Council

Bayswater RSL Sub-Branch
Boronia RSL Sub-Branch

37 Latrobe City Council

Moe RSL Sub-Branch
Morwell RSL Sub-Branch
Traralgon RSL Sub-Branch
Yallourn/Newbrough
RSL Sub-Branch

38 Loddon Shire Council

Boort RSL Sub-Branch
Dunolly/Bealiba RSL Sub-Branch
Inglewood/Bridgewater
RSL Sub-Branch
Mitiamo RSL Sub-Branch
Pyramid Hill RSL Sub-Branch

39 Macedon Ranges Shire Council

Gisborne/Macedon Ranges
RSL Sub-Branch
Kyneton RSL Sub-Branch
Romsey/Lancefield RSL Sub-Branch
Woodend RSL Sub-Branch

40 Manningham City Council

Doncaster RSL Sub-Branch
Templestowe RSL Sub-Branch
Warrandyte RSL Sub-Branch

41 Mansfield Shire Council

Heyfield RSL Sub-Branch
Mansfield RSL Sub-Branch

42 Maribyrnong City Council

Footscray RSL Sub-Branch
Maribyrnong Maidstone
RSL Sub-Branch
Republic of Vietnam RSL Sub-Branch
Yarraville RSL Sub-Branch

43 Maroondah City Council

Croydon RSL Sub-Branch
Ringwood RSL Sub-Branch

44 Melbourne City Council

BCOF RSL Sub-Branch
Malta/George Cross RSL Sub-Branch
Melbourne RSL Sub-Branch
Merchant Navy RSL Sub-Branch
New Zealand RSL Sub-Branch
Returned Nurses RSL Sub-Branch
Returned Servicewomen
RSL Sub-Branch
Victorian Chemists RSL Sub-Branch

45 Melton Shire Council

Melton RSL Sub-Branch

46 Mildura Rural City Council

Merbein RSL Sub-Branch
Mildura RSL Sub-Branch
Murrayvale RSL Sub-Branch
Ouyen RSL Sub-Branch
Red Cliffs/Irymple RSL Sub-Branch
Underbool RSL Sub-Branch

47 Mitchell Shire Council

Broadford RSL Sub-Branch
Kilmore RSL Sub-Branch
Seymour RSL Sub-Branch

48 Moira Shire Council

Cobram Barooga RSL Sub-Branch
Katunga RSL Sub-Branch
Nathalia/Picola RSL Sub-Branch
Numurkah RSL Sub-Branch
Strathmerton RSL Sub-Branch
Yarrowonga/Mulwala
RSL Sub-Branch

49 Monash City Council

Clayton RSL Sub-Branch
Oakleigh-Carnegie RSL Sub-Branch
Polish RSL Sub-Branch
Red Shield RSL Sub-Branch
Waverley RSL Sub-Branch

50 Moonee Valley City Council

Essendon RSL Sub-Branch
Flemington/Kensington
RSL Sub-Branch
Keilor East RSL Sub-Branch

51 Moorabool Shire Council

Bacchus Marsh RSL Sub-Branch
Ballan RSL Sub-Branch

52 Moreland City Council

Coburg RSL Sub-Branch
Fawkner RSL Sub-Branch
Glenroy RSL Sub-Branch
Italian RSL Sub-Branch
Pascoe Vale RSL Sub-Branch

53 Mornington Peninsula Shire Council

Crib Point RSL Sub-Branch
Dromana Red Hill RSL Sub-Branch
Flinders RSL Sub-Branch
Hastings RSL Sub-Branch
Mornington RSL Sub-Branch
Rosebud RSL Sub-Branch
Rye RSL Sub-Branch
Sorrento/Portsea RSL Sub-Branch

54 Mount Alexander Shire Council

Castlemaine RSL Sub-Branch
Maldon RSL Sub-Branch

55 Moyne Shire Council

Caramut RSL Sub-Branch
Macarthur RSL Sub-Branch
Mortlake RSL Sub-Branch
Port Fairy RSL Sub-Branch

- 56 Murrindini Shire Council**
 Alexandra RSL Sub-Branch
 Eildon RSL Sub-Branch
 Marysville RSL Sub-Branch
 Thornton RSL Sub-Branch
 Yea RSL Sub-Branch
- 57 Nillumbik Shire Council**
 Diamond Creek RSL Sub-Branch
 Eltham RSL Sub-Branch
 Hurtsbridge RSL Sub-Branch
 Korea Veterans RSL Sub-Branch
- 58 Northern Grampians Shire Council**
 St Arnaud RSL Sub-Branch
 Stawell RSL Sub-Branch
- 59 Port Philip City Council**
 Elwood RSL Sub-Branch
 Hellenic RSL Sub-Branch
 St Kilda RSL Sub-Branch
 Turkish RSL Sub-Branch
 West St Kilda RSL Sub-Branch
- 60 Pyrenees Shire Council**
 Avoca RSL Sub-Branch
 Ripon/Beaufort RSL Sub-Branch
- 61 Borough of Queenscliff**
 Queenscliff/Point Lonsdale
 RSL Sub-Branch
- 62 South Gippsland Shire Council**
 Fish Creek RSL Sub-Branch
 Foster RSL Sub-Branch
 Korumburra RSL Sub-Branch
 Leongatha RSL Sub-Branch
 Meenyan RSL Sub-Branch
 Tarwin Lower RSL Sub-Branch
 Toora RSL Sub-Branch
- 63 Southern Grampians Shire Council**
 Balmoral RSL Sub-Branch
 Cavendish RSL Sub-Branch
 Coleraine RSL Sub-Branch
 Dunkeld RSL Sub-Branch
 Hamilton RSL Sub-Branch
 Penshurst RSL Sub-Branch
- 64 Stonnington City Council**
 East Malvern RSL Sub-Branch
 Prahran RSL Sub-Branch
 Toorak RSL Sub-Branch
- 65 Strathbogie Shire Council**
 Avenel RSL Sub-Branch
 Euroa RSL Sub-Branch
 Nagambie RSL Sub-Branch
 Violet Town RSL Sub-Branch
- 66 Surf Coast Shire Council**
 Anglesea RSL Sub-Branch
 Lorne RSL Sub-Branch
 Torquay RSL Sub-Branch
 Winchelsea RSL Sub-Branch
- 67 Swan Hill Rural City Council**
 Manangatang RSL Sub-Branch
 Piangil RSL Sub-Branch
 Robinvale RSL Sub-Branch
 Swan Hill RSL Sub-Branch
 Woorinen RSL Sub-Branch
- 68 Towong Shire Council**
 Corryong RSL Sub-Branch
 Tallangatta RSL Sub-Branch
- 69 Wangaratta Rural City Council**
 Wangaratta RSL Sub-Branch
 Whitfield RSL Sub-Branch
- 70 Warrnambool City Council**
 Warrnambool RSL Sub-Branch
- 71 Wellington Shire Council**
 Briagolong RSL Sub-Branch
 Loch Sport RSL Sub-Branch
 Maffra RSL Sub-Branch
 Sale RSL Sub-Branch
 Stratford RSL Sub-Branch
 Yarram RSL Sub-Branch
- 72 West Wimmera Shire Council**
 Edenhope RSL Sub-Branch
 Harrow RSL Sub-Branch
 Kaniva RSL Sub-Branch
 Langkoop/Apsley RSL Sub-Branch
- 73 Whitehorse City Council**
 Blackburn RSL Sub-Branch
 Box Hill RSL Sub-Branch
 Burwood RSL Sub-Branch
 Mitcham RSL Sub-Branch
- 74 Whittlesea City Council**
 Epping RSL Sub-Branch
 Whittlesea RSL Sub-Branch
- 75 Wodonga City Council**
 Wodonga RSL Sub-Branch
- 76 Wyndham City Council**
 Werribee RSL Sub-Branch
- 77 Yarra City Council**
 Richmond RSL Sub-Branch
 Tramways/East Melb RSL Sub-Branch
- 78 Yarra Ranges Shire Council**
 Dandenong Ranges RSL Sub-Branch
 Emerald RSL Sub-Branch
 Healesville RSL Sub-Branch
 Lilydale RSL Sub-Branch
 Monbulk RSL Sub-Branch
 Mount Evelyn RSL Sub-Branch
 Upper Yarra RSL Sub-Branch
 Upwey/Belgrave RSL Sub-Branch
 Warburton RSL Sub-Branch
 Wedderburn/Korongvale
 RSL Sub-Branch
 Yarra Glen RSL Sub-Branch
- 79 Yarriambiack Shire Council**
 Hopetoun RSL Sub-Branch
 Minyip RSL Sub-Branch
 Murtoa RSL Sub-Branch
 Patchewollock RSL Sub-Branch
 Rupanyup RSL Sub-Branch
 Warracknabeal RSL Sub-Branch

For further information on your local Sub-Branch, visit www.rslvic.com.au which features a full Sub-Branch directory complete with contact details.

WITH THANKS

The information provided in this document demonstrates the ongoing commitment to not only the ex-service community but the community at large. RSL Sub-Branches are committed to maintaining a presence within their community now, and well into the future.

An increasing need for care of our ex-serving and senior community faces the RSL each year and all Victorian Sub-Branches should be congratulated for the manner in which they manage this need and deliver assistance via finances, resources or other to their communities.

We are determined to continue to deliver on the objectives of the League for many years to come.

The information and statistics presented have been compiled through a number of sources: Licensed Sub-Branches individual Community Benefits Statement Submissions, Departments of Property & Finance, Welfare Entitlements & Pensions Support, ADCC and the Licensed Sub-Branches Association. Many Sub-Branches have also assisted with completing individual surveys and great appreciation must go to those who participated in this survey providing data, case studies and images. Particular thanks to Kerry Martin and Justin Cooper for their photographic contribution.



SERVING YOUR COMMUNITY

RSL Victoria Community Benefits Report 2008-2009

Returned & Services League of Australia (Victorian Branch) Inc.
ANZAC House
4 Collins Street
Melbourne VIC 3000
P: 03 9655 5555
F: 03 9655 5500
E: rslvic@rslvic.com.au
W: www.rslvic.com.au