



Module 1A: Introduction to PNG

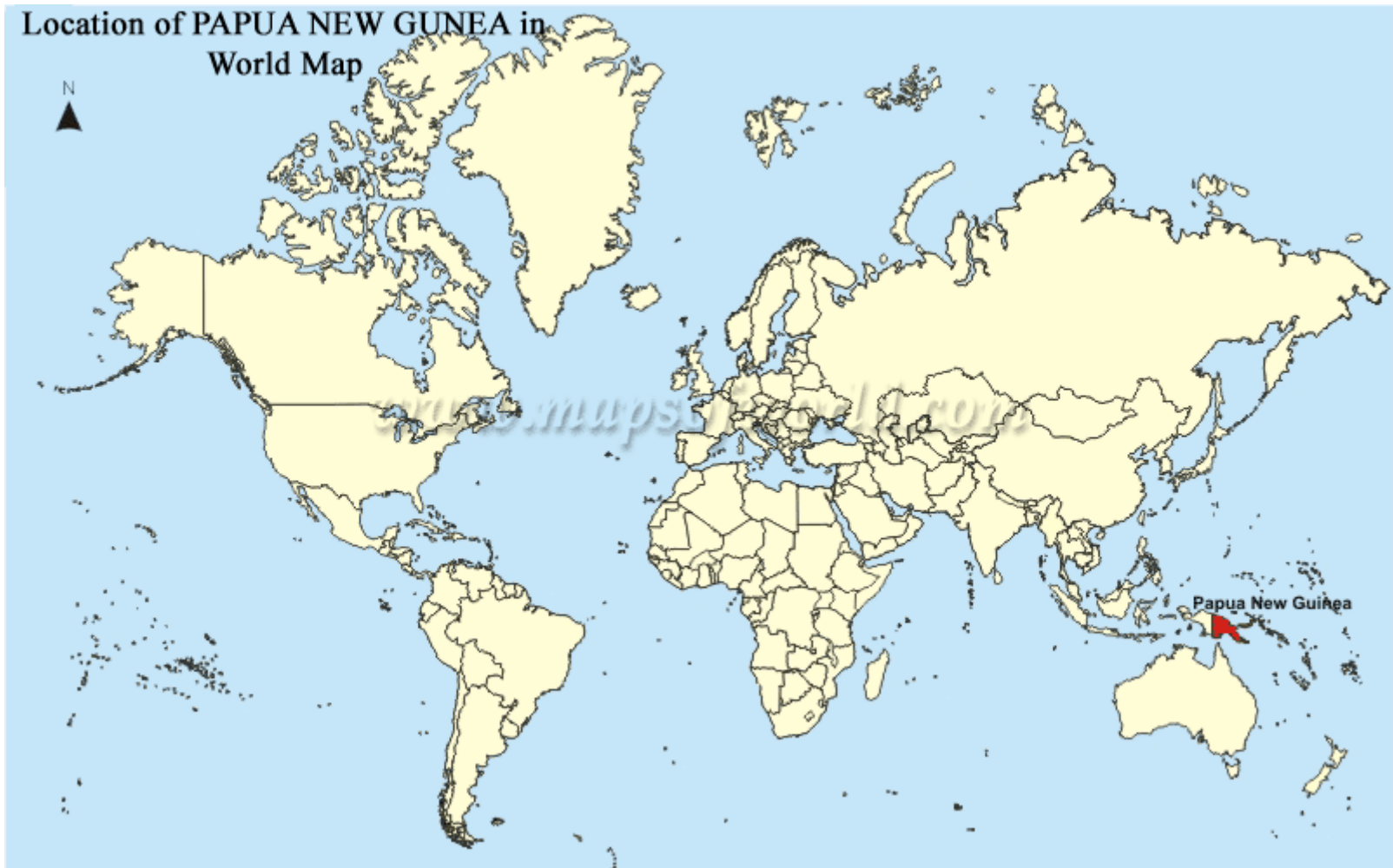
Session 1 of 2: The land of Papua New Guinea

Module 1A - Overview

- Where is PNG?
- Manus Island
- Mountains and volcanoes
- Rivers and beaches
- Climate
- Land use and crops
- Natural resources
- Environmental issues
- Plants and animals
- Places of interest
- History of PNG
- Government and politics
- Flags



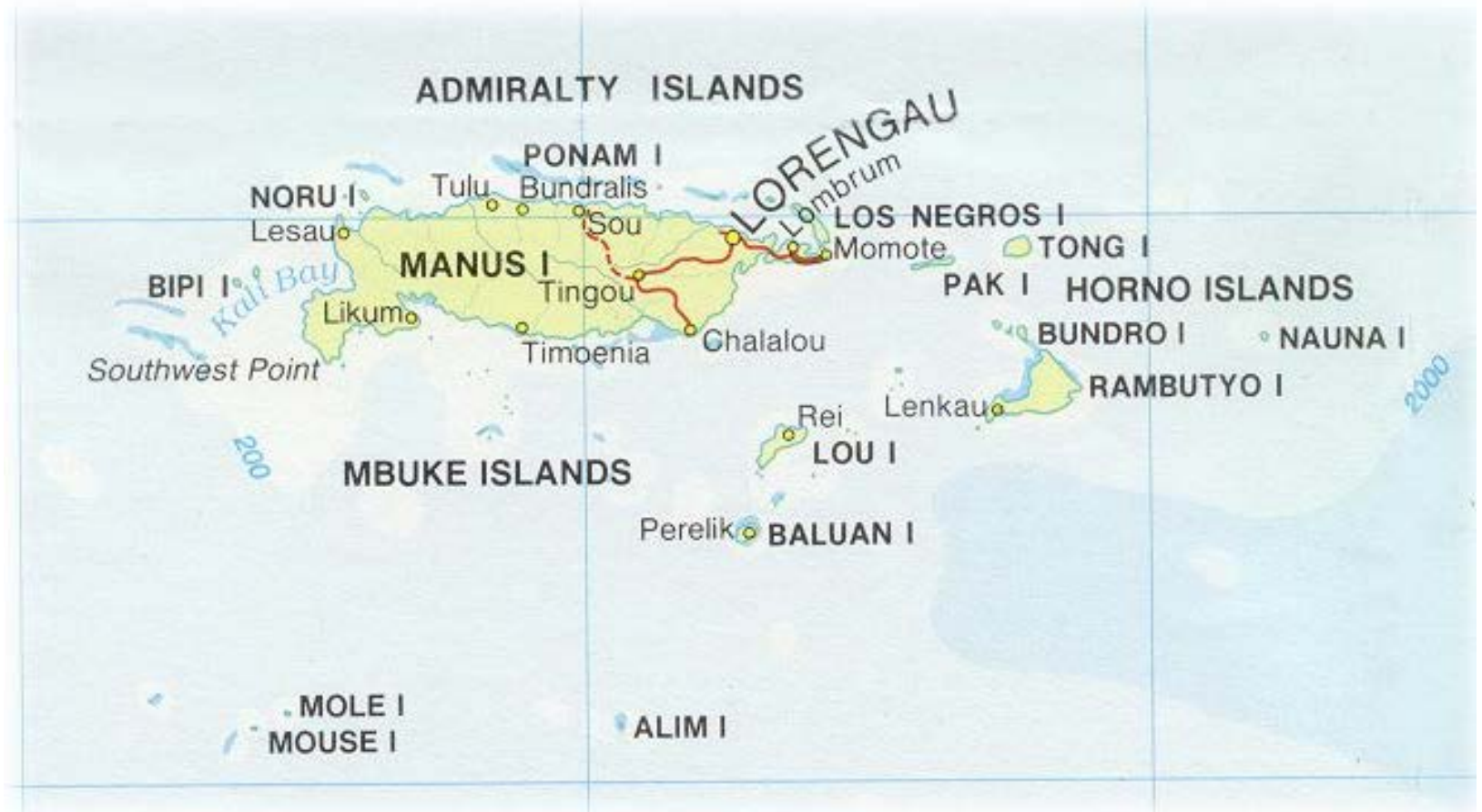
Where is Papua New Guinea?



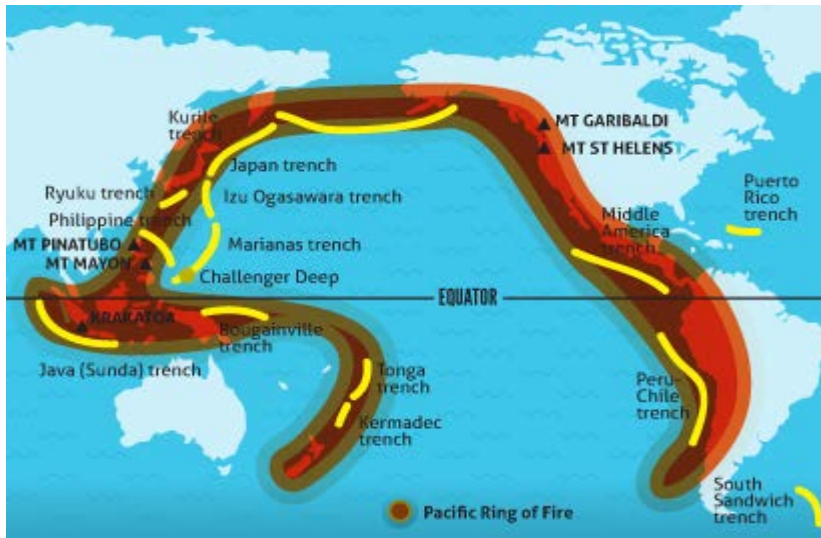
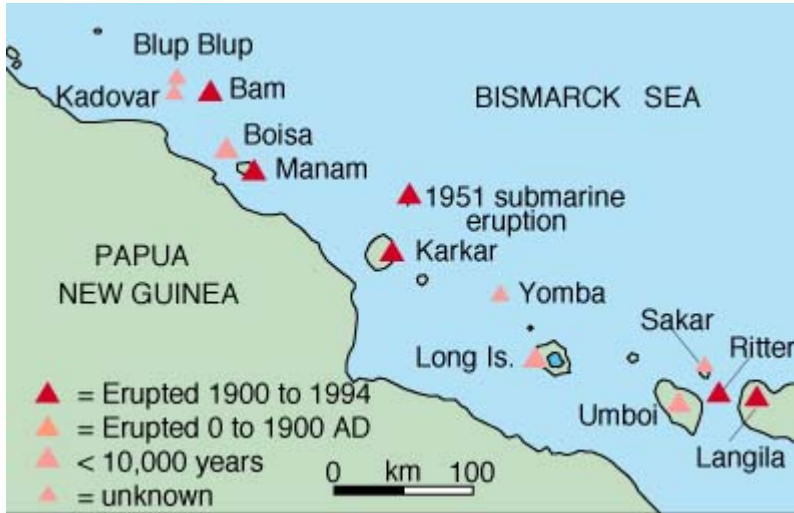
PNG



Manus Island



Mountains and Volcanoes

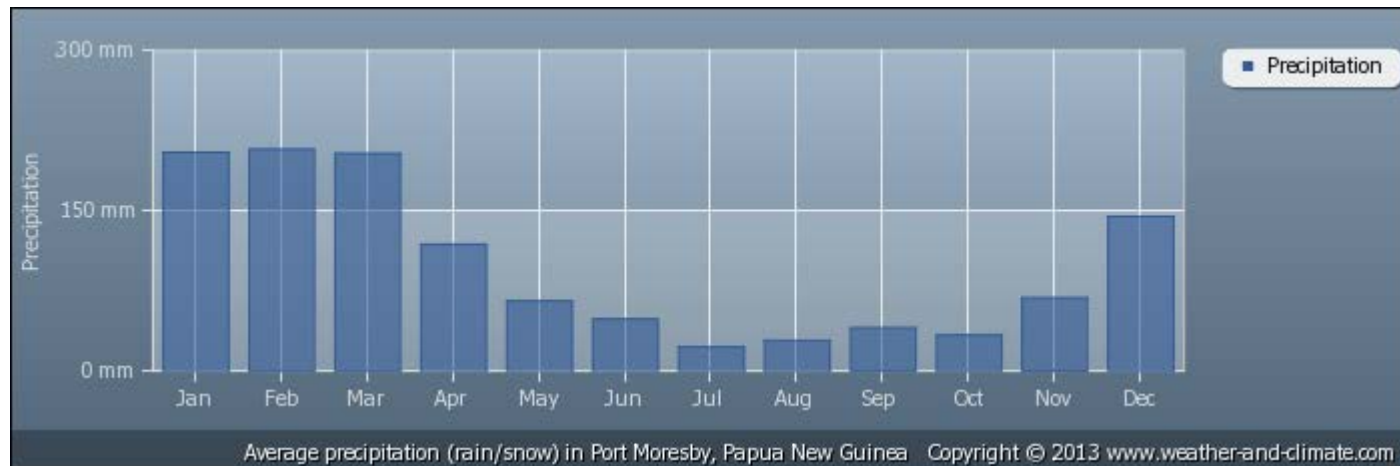


Rivers and Beaches



Climate

- November to April – Wet Season
- May to October – Dry Season
- Coastal Areas average temperature 27-32 degrees (high humidity)
- Highlands average temperature 21 degrees



Land Use and Crops

- Cocoa, coffee, coconuts, bananas, pineapples, tea, sugar
- Chickens, pigs and cattle for food production

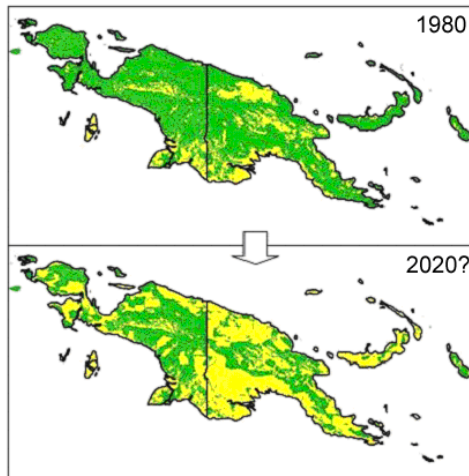
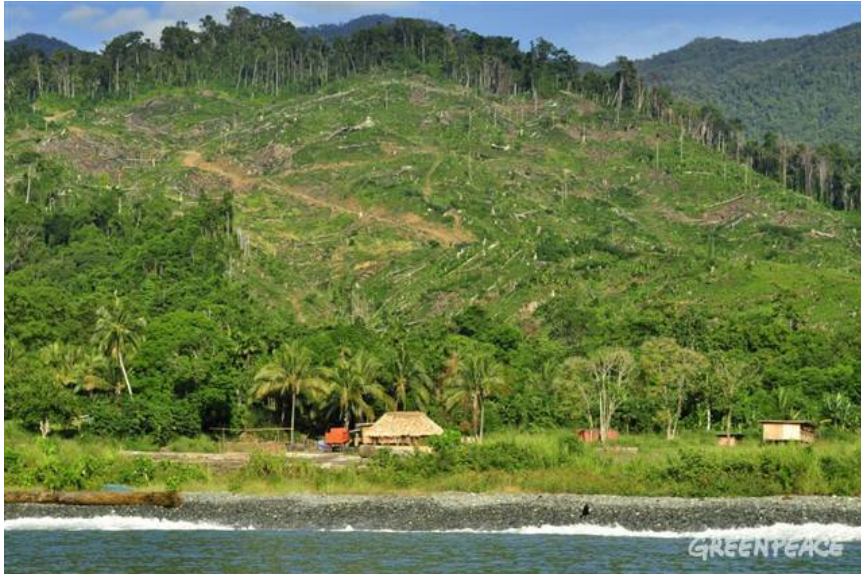


Natural Resources – Mining and Fishing

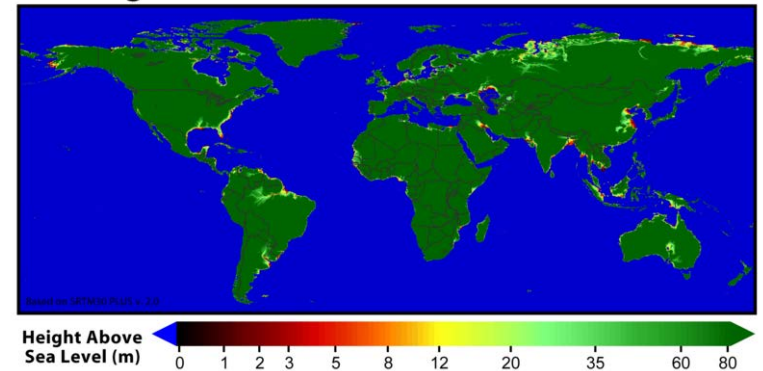
- Gold, Copper, Silver
- Natural Gas
- Timber
- Oil
- Fishing



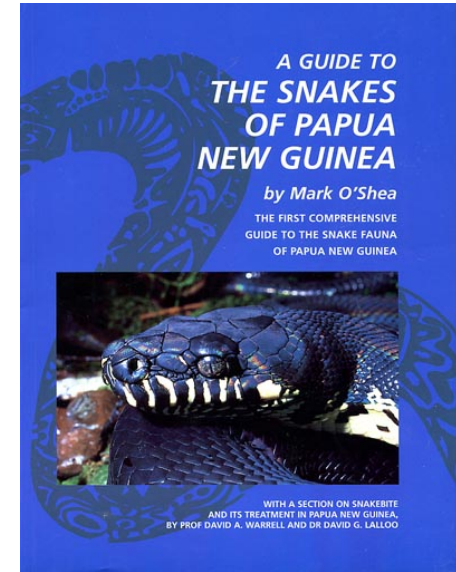
Environmental Issues



Regions Vulnerable to Sea Level Rise

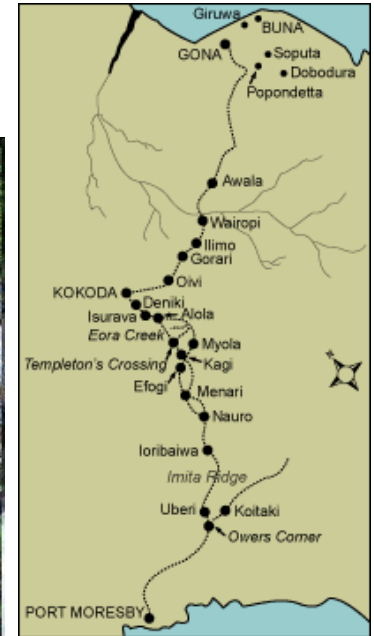


Plants and Animals

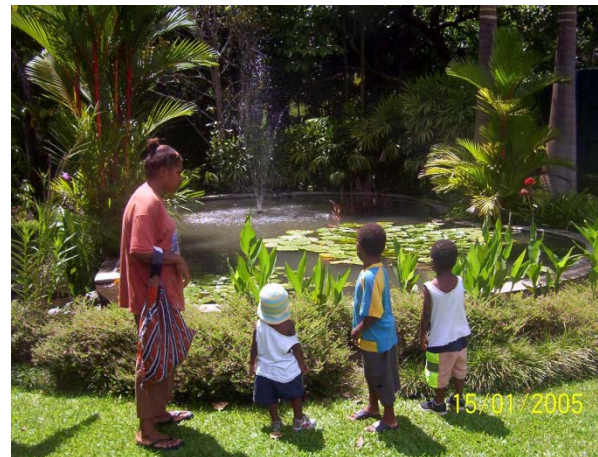


Places of Interest

- Kokoda Track



- Mt Wilhelm (highest mountain)
Rainforest Habitat (Lae)
- Wildlife Sanctuary and
Botanical Gardens – Port
Moresby
- North Eastern PNG.
Bougainville has 6 active
volcanoes and one of the
largest caves in the world



History of PNG

- *Second largest island in the world.*
- *In 1885 it was divided into north and south, with Germany taking control of the northern half, and the United Kingdom controlling the southern half.*
- *In 1902, control of the southern half was transferred to Australia, which took over the rest of the country during World War 1 and continued to administer the whole country until PNG gained independence in 1975.³*



Government and Politics

- Democratic Government
- Papua New Guinea is divided into four regions, and the regions are divided into provinces.
- All residents who are over 18 can vote

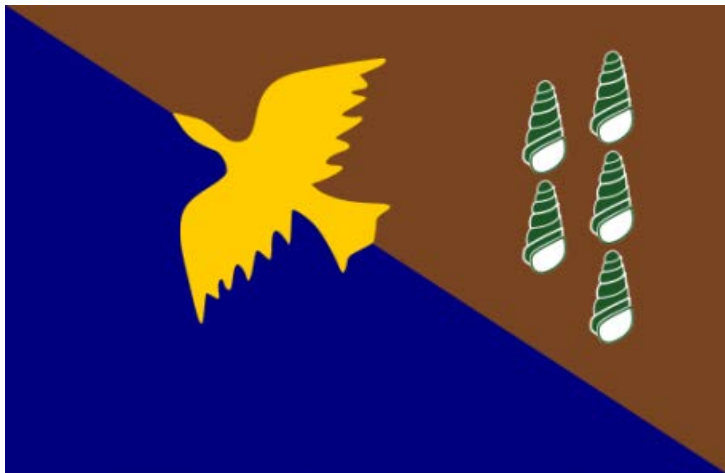


FLAGS



PNG Flag

- Bird of Paradise, native to PNG, symbolises the emergence of PNG as a nation
- Stars – Southern Cross constellation – connection to counties in the Pacific
- Traditional Colours



Manus Province Flag

- Brown – inland people
- Blue – island people
- Chauka (bird) native to Manus
- Green snails native to Manus – 5 for each region

Questions?

Please feel free to ask any questions relating to the topics covered in this session.

If we don't know the answer we will find out.



Module 2 - Overview

- Variety of languages, people and cultures
- TV, radio and telephones
- PNG coins and banknotes
- Currency equivalence
- Shopping
- Transport and driving
- Sports
- Art and craft
- Cultural celebrations and public holidays
- Pacific Games 2015





Module 1B: Introduction to PNG

Session 2 of 2: The people of Papua New Guinea

Module 1B - Overview

- Variety of languages, people and cultures
- TV, radio and telephones
- PNG coins and banknotes
- Currency equivalence
- Shopping
- Transport and driving
- Sports
- Art and craft
- Cultural celebrations and public holidays
- Pacific Games 2015

Variety of languages, people & cultures



Over 800 languages



TV, radio & telephones

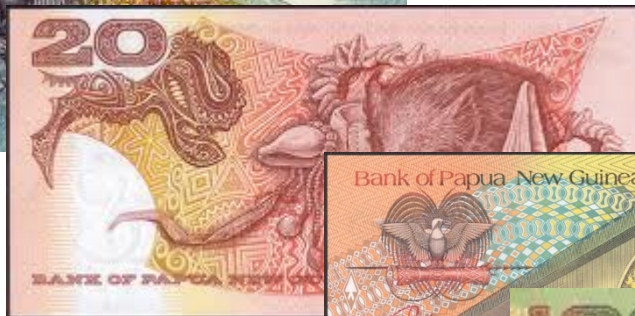
CITY



RURAL



PNG coins & banknotes



Currency equivalence



1 kina

= 42 Pakistan rupees

= 5,058 Iranian rials

= US 40 cents



3 kina

= 126 Pakistan rupees

= 15,174 Iranian rials

= US \$1.10



20 kina

= 101,000 Iranian rials

= 840 Pakistan rupees

= US \$7.25

Shopping



Shopping



© Angra Pics 2002

Trade store ↑

Outdoor markets ↓



Transport, driving and buying a car



Car maintenance



Traffic rules



State of the roads

Muddy
Roads



Flooded road ↑



← City traffic

Dangers on the road



← Over-crowded vehicle



↑ Raskols block the road



← Badly kept roads

Other road transport



Water transport



© Angra Pics 2002

Air transport



Sports



Art & craft



Cultural celebrations & public holidays



Cultural dance and music

Shell instrument to accompany dancing and singing



Dancing is often accompanied by traditional drums

Pacific Games 2015



Questions?

Please feel free to ask any questions relating to the topics covered in this session.

If we don't know the answer we will find out.



Module 2 - Overview

- The wantok system
- Role of men
- Role of women
- Role of children
- Child abuse
- Keeping each other safe
- Daily life in a family
 - Education for children
 - Types of schools
 - School hours
 - School terms and holidays
- Water
- Food and cooking
- How to be accepted and make friends
- Manners and acceptable behavior





Module 2: Family Life in Papua New Guinea

Module 2 - Overview

- The wantok system
- Role of men
- Role of women
- Role of children
- Child abuse
- Keeping each other safe
- Daily life in a family
 - Education for children
 - Types of schools
 - School hours
 - School terms and holidays
- Water
- Food and cooking
- How to be accepted and make friends
- Manners and acceptable behavior



The wantok system



Role of Men



Role of Women



Role of Children



Playing



Working –
helping to
harvest
palm oil

Learning



Child Abuse



Keeping each other safe



Daily life in a family



Education for children



Types of schools

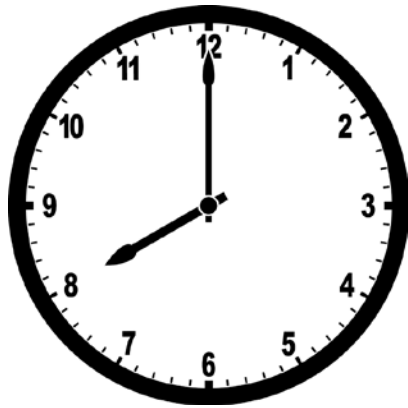


Catholic International School, Port Moresby

Government elementary school, Tufi



School hours



8:00 am



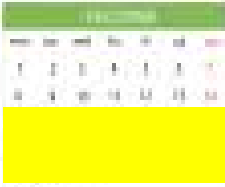
3:00 pm



School terms & holidays



2014

2014	2014	2014
		
		
		
		

Water



Food & cooking



How to be accepted & make friends



Manners & acceptable behaviour



Module 3 - Overview

- Risks to health
- Malaria, Tuberculosis, Rabies
- Sexual Health
- Water contamination: Cholera, typhoid & hepatitis A
- Drug and alcohol issues
- Snakes, crocodiles and wild pigs
- How to get medical help
- Hospitals and clinics
- Pregnancy, childbirth and nursing mothers
- Birth and death

Questions?

Please feel free to ask any questions relating to the topics covered in this session.

If we don't know the answer we will find out.





Module 3: Public Health in Papua New Guinea

Module 3 - Overview

- Risks to health
 - Malaria
 - Tuberculosis
 - Rabies
 - Sexual health
 - Water contamination
 - Cholera
 - Typhoid fever
 - Hepatitis A
 - Safe food and drinks
- Alcohol
 - Other drugs
 - Betel nut
 - How to get medical help
 - Hospitals and clinics
 - Pregnancy, childbirth and nursing mothers
 - Teenage pregnancy
 - Birth and death

Risks to health



Malaria



Tuberculosis (TB)



Rabies



Sexual health



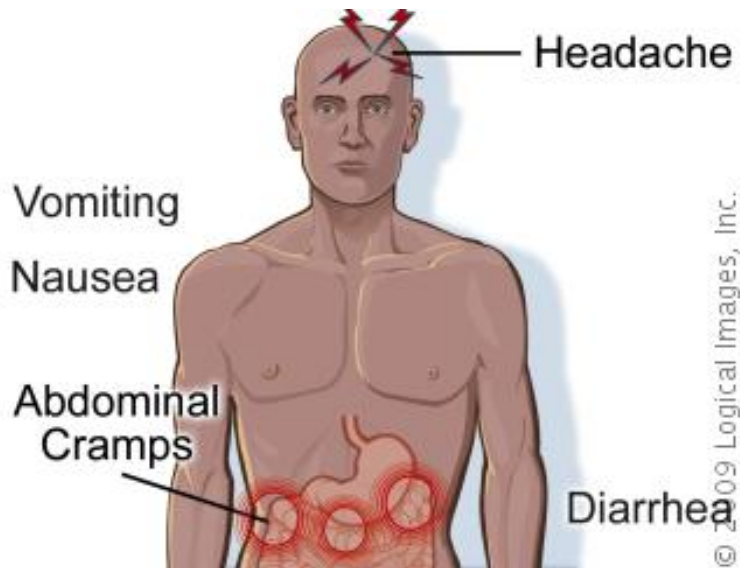
FOR SAFER SEX,
USE A CONDOM



Water contamination



Cholera



Typhoid fever



Hepatitis A



Safe food & drinks



Alcohol



Other drugs



Marijuana



Betel nut

Betel nut



How to get medical help



Port Moresby General Hospital



Eye clinic,
Kimbe General Hospital

Hospitals & clinics

Port Moresby General Hospital



Clinic for mothers in Madang



Pregnancy, childbirth & nursing mothers



Susu
Mamas



Teenage pregnancy

PROTECT YOUNG
WOMEN



Birth & death



Men = 61 years



Women = 65 years



Questions?

Please feel free to ask any questions relating to the topics covered in this session.

If we don't know the answer we will find out.



Module 4 - Overview

- Cities, villages and settlements
- Daily life in a village
- Daily life in the city
- Dealing with rubbish
- Living expenses: cost of groceries
- Land and housing
- Renting or buying
- High rate of unemployment
- Problems of unemployment
- Skills in demand
- Self-employment and sustainable farming
- Recognition of overseas qualifications
- Options for adult education
- Location of educational facilities
- TAFE & private colleges
- Universities
- TAFE and university fees



Module 4: Living, working & learning in Papua New Guinea

Module 4 - Overview

- Cities, villages and settlements
- Daily life in a village
- Daily life in the city
- Dealing with rubbish
- Living expenses: cost of groceries
- Land and housing
- Renting or buying
- High rate of unemployment
- Problems of unemployment
- Skills in demand
- Self-employment and sustainable farming
- Recognition of overseas qualifications
- Options for adult education
- TAFE & private colleges
- Universities
- TAFE and university fees

Cities, villages and settlements



City of Port
Moresby

Village



Village
built over
water



Daily life in a village



Daily life in the city



Dealing with rubbish

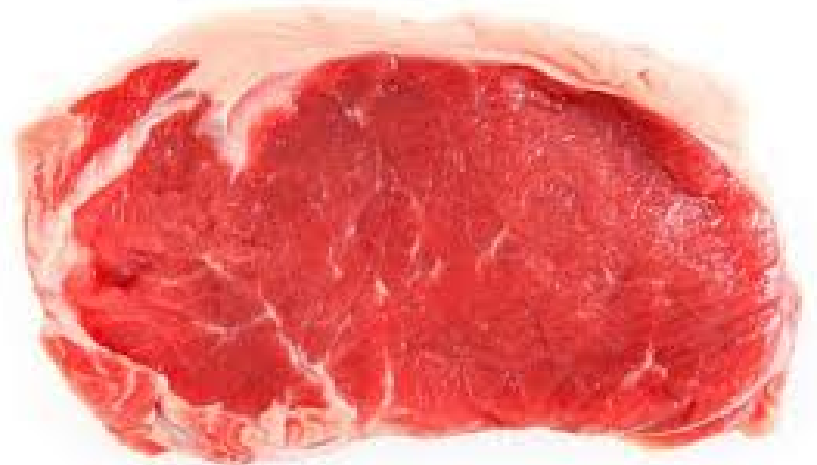


Living Expenses: Cost of groceries



← Tomatoes 30 kina
= US \$10.70

Beef 50 kina →
= US \$18



Land and housing



← Village huts



Houses built on stilts over the water ↑

Western style house →



Renting or buying

Salary = 157 kina per week

= \$56 US

Rent an apartment = 1600 kina per week

= \$554 US

Buy a cheap house = 300,000 kina

= \$103,800 US

Buy an expensive house = 3 million kina

= \$1,038,000 US

High rate of unemployment

In the city = 80% unemployment



In the village, everyone works
(but they are not paid)

Problems of unemployment



Skills in demand

Mining industry

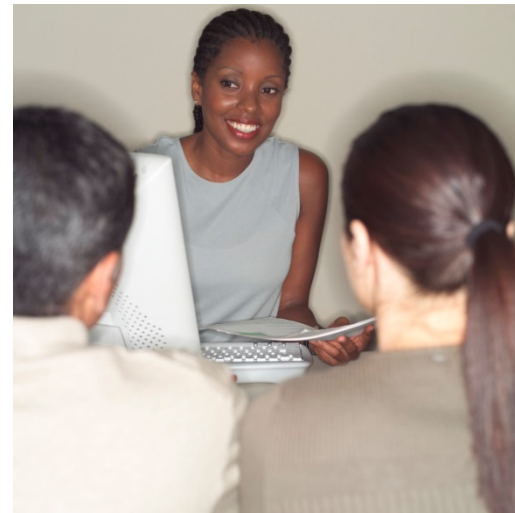
- Fitter
- Miner
- Engineer
- Tradesman
- Building supervisor
- Computer-assisted drafting
- Accountant
- Human resources professional



Self-employment and sustainable farming



Recognition of overseas qualifications



Department of Labour and Industrial Relations

Options for adult education

- 4 colleges of TAFE
- 6 universities
- 7 colleges of nursing
- 8 teachers colleges
- 7 technical colleges
- 2 business colleges
- 1 forestry college



TAFE & private colleges



I.T.



Finance



Hospitality



Tourism



Business



Children's services

Universities



Law

Medicine



Humanities

Sciences



TAFE and university fees

TAFE:

Certificate 2 = 4,500 kina per year = US \$157

Advanced Diploma = 6,250 kina per year
= US \$2163

University:

Business degree = 1,500 kina per year = US \$520

Medical degree = 1,800 kina per year = US \$623

Accommodation & meals = 7,000 kina per year
= US \$2,420

Questions?

Please feel free to ask any questions relating to the topics covered in this session.

If we don't know the answer we will find out.



Session 5 - Overview

- Crime and criminal gangs
- Safety in the cities
- Safety in villages
- Tribal wars
- Demonstrations and crowd disturbances
- Safety on the road
- Avoid going out after dark
- Safety for women
- Safety in the air
- Crocodiles
- Volcanoes
- Safety in the wet season



Module 5: Public Safety in Papua New Guinea

Module 5 - Overview

- Crime and criminal gangs
- Safety in the cities
- Safety in villages
- Tribal wars
- Demonstrations and crowd disturbances
- Safety on the road
- Avoid going out after dark
- Safety for women
- Safety in the air
- Crocodiles
- Volcanoes
- Safety in the wet season

Crime and criminal gangs



Machete



Roadblock

Safety in the cities



Safety in the cities



Safety in villages



Tribal wars



Demonstrations and crowd disturbances



Safety on the road



Drive with
doors locked
and windows
closed



P.M.V.



Safety on the road



Avoid going out after dark



Safety for women



Safety in the air

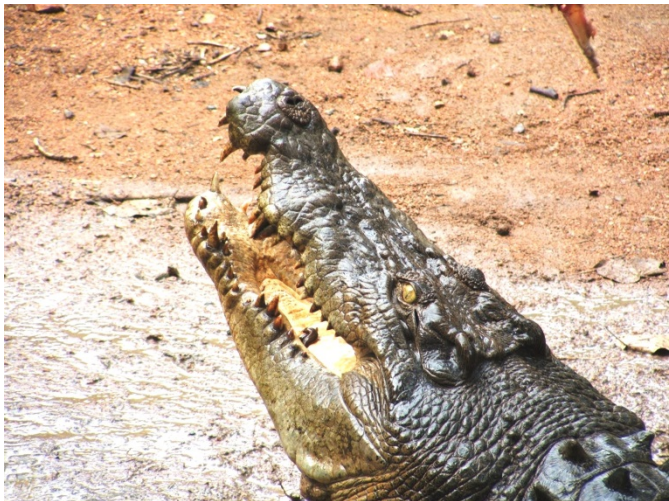


← Small plane:
can be dangerous

Air Niugini plane:
safer →



Crocodiles



Volcanoes



An active volcano in Rabaul

Safety in the wet season



← Flooded road

Broken road



Questions?

Please feel free to ask any questions relating to the topics covered in this session.

If we don't know the answer we will find out.



Module 6 - Overview

- What are the laws of the land?
- Stealing and fraud
- Violence
- Homosexual acts
- Disturbing the peace
- Disobeying a person in authority
- Disobeying road rules
- Penalties for breaking the law
- Judiciary and law enforcement



Module 6: Law and Policing in Papua New Guinea

Module 6 - Overview

- What are the laws of the land?
- Stealing and fraud
- Violence
- Homosexual acts
- Disturbing the peace
- Disobeying a person in authority
- Disobeying road rules
- Penalties for breaking the law
- Judiciary and law enforcement

What are the laws of the land?

You can be punished under law for:

- Stealing and fraud
- Violence of any kind
- Sexual assault
- Homosexual acts
- Disturbing the peace
- Disobeying a person in authority
- Disobeying road rules
- Carrying or selling drugs

Stealing and fraud

- Stealing from a person
- Stealing from a shop or other business
- Stealing public property
- Not paying proper fees or taxes
- Cheating in business

Violence

- Hitting, punching, kicking
- Use of weapons
- Domestic violence (against wife, husband or child)
- Murder

Sexual assault

- Rape or attempted rape
- Touching a person sexually without their permission
- Any sexual act with a child

Homosexual acts



Homosexuality is illegal in Papua New Guinea.

Disturbing the peace

- Fighting in public
- Being drunk and disorderly in public places
- Causing harm or nuisance to others in public

Disobeying a person in authority

Disobeying:

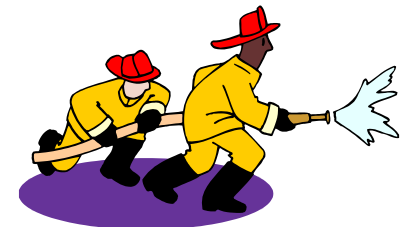
- A police officer



- A traffic officer



- A public official (e.g. a fire officer)



Disobeying road rules

- Carry a current driver's licence at all times
- Drive on the left
- Drive safely
- Obey traffic lights and signs
- Keep your vehicle roadworthy
- Display a current safety sticker
- Display a current registration sticker



Penalties for breaking the law

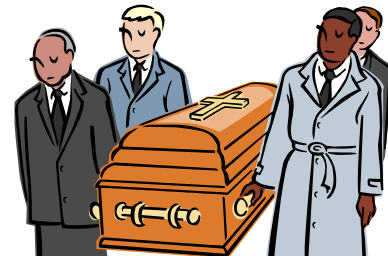
- Fines



- Imprisonment



- **The death penalty:** for acts of violent crime.



Carrying or selling drugs

Don't grow drugs



Don't carry drugs



Don't sell drugs

Judiciary and law enforcement

Two levels:

- Parliament votes on what will become law
- Common law in various Courts:
 - Local/village Court
 - District / provincial Court
 - National Court
 - Supreme Court



Parliament House
Port Moresby

Questions?

Please feel free to ask any questions relating to the topics covered in this session.

If we don't know the answer we will find out.

