

Builders

Revised Option 1

Completed

METRO REPLACEMENT BAND 1 - TYPE A
PROPOSED SITE PLAN

CHAPMAN ST

MURLONG ST

CADELL ST



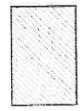
SCALE 1:500 @ A3
LENGTHS ARE IN METRES



TREE TO BE REMOVED



PROPOSED SITE OF BAND 1 - TYPE A METRO TEMPLATE



EXISTING SCHOOL BUILDINGS TO BE RETAINED

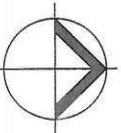
BUILDERS ACCESS

PEDESTRIAN ENTRY

BUILDERS ACCESS

EXISTING TREES TO BE REMOVED

BAND 1 - TYPE A TEMPLATE MIRRORED

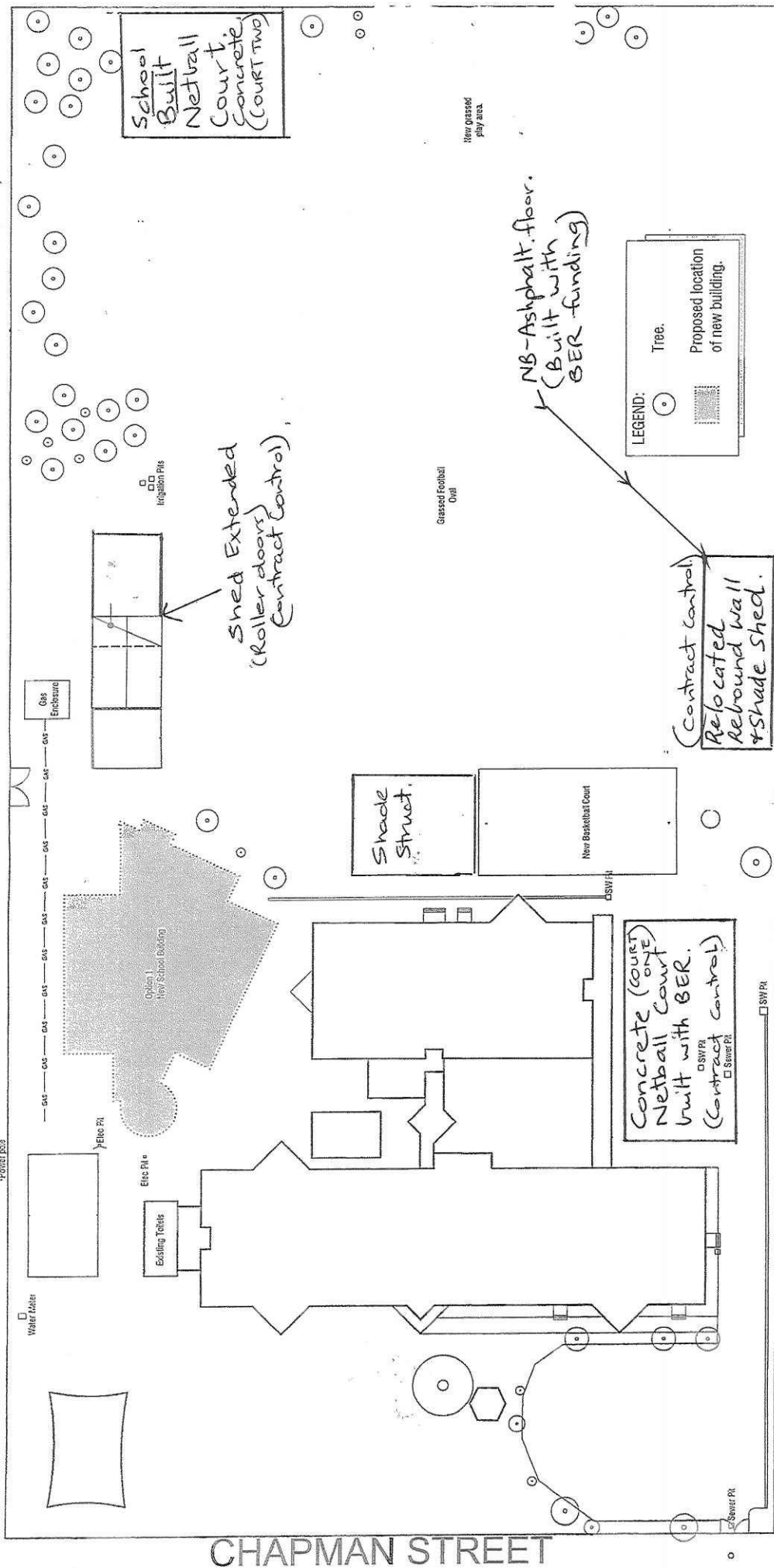


SWAN HILL NORTH PRIMARY

1:500 @ A3 11-JUNE-09 CDG
M21024 SK 001 A

SWAN HILL NORTH PRIMARY SCHOOL

MURLONG STREET



Netball/Basketball Court 2 – The second court will now be situated down the back of the oval in the corner near St Mary's. We felt this was an underutilized space and that the court fitted the flow of the playground in this corner.

Relocated Rebound Wall and Shed – This will now be located along the fence near the camp shed (which is going to be removed). The Relocated Rebound Wall and Shed fits in this corner nicely and creates another play area in close proximity to the school buildings. The structure can be built on the boundary and only comes out 4 metres from the tree line.

- Other factors:
- The 3 new play areas have been positioned to create a spread so that the children have 'different' areas and space from one another.
 - We have been told that the school will be rebuilt within 10 years. We believe keeping structures on the perimeter should help future structures and decision making about the location of future developments.
 - Any new portables would be located in front of Mandy's room in line with Gloria's room.

Thanks Cammhall

School Development Update & Decisions 13/10/09

Thanks to everyone for your hard work in providing School Council with your input into improving the school grounds and developing our master plan. At the last School Council meeting we confirmed the following locations for the new buildings and structures. Changes have been made to the suggestions made by staff. Council would like to explain why we made changes to staff suggestions and we hope to explain below why we did this.

Explanations for changes:

Netball/Basketball Court 1 – We decided not to put the court in front of the new PE shed as when we stepped out how far it would come on to the oval it was significantly more than it appeared on the chart in the staffroom. We felt it would impact too much on the oval space. We therefore decided to build the Court 1 where the portables are in Cruickies Nook. We see this being a good location because it is sheltered and it opens up this dark corner of the school. It was felt that a car park in this area would be a potential eyesore and that it created a nice open space near the school buildings.

INCOLL MANAGEMENT Pty Ltd
ABN 66 093 516 619

SITE PLAN PROPOSAL - SCHOOL APPROVAL SIGN-OFF

Region: Loddon Mallee

School No: 4743

School Name: Swan Hill Nth Primary

Site Analysis Architectural Firm: Sutors

Name of visiting Site Analysis Architect: Chris Goodwin

Template: Band 1, Option A

Drawing Number: M21024 SK001 A; M21024 SK002 A

Drawing Date: 24-June-09

As Principal, or authorized representative I confirm that the works as described above and depicted on the form
aforementioned place are approved:

Date: 24-6-9

Name: Campbell McKay (School Principal)

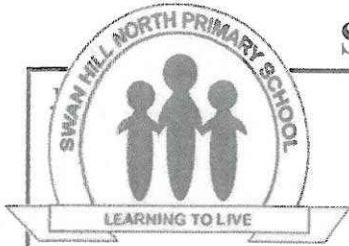
Signature: _____

Enabling Works:

- Link new building to main building with covered walkway – to be determined
- Remove trees as per drawing
- Relocate shed or demolish and provide new – contingent on available budget
- Relocate existing canopy, concrete base and block rebound wall
- Remove 1 x mod 5 and 1 x mod 2
- Relocate basketball court to location of removed relocatables
- Site subject to services location and final authorization from the DEECD

* Existing Canopy and Court to be relocated
as shade structure.





Chapman Street, Swan Hill. 3585

Correspondence: P.O. Box 992

Phone : (03) 50324577

Mobile: 0448665692

Fax: (03) 50324472

E-MAIL swanhill.north.ps@edumail.vic.gov.au**Re: Consequential Works****14th May, 2010****Dear Andrew,**

I write on behalf the Swan Hill North Primary School Council regarding the consequential works at our school.

To build our P21 Century Library Learning Neighbourhood we were required to remove a number of large structures from our school with the understanding these would all be replaced.

Significant time and energy was put into deciding where the buildings would be located including an onsite inspection by the Assistant Region Director (Operations) Graeme Robertson and numerous meetings with our School Council and Building and Grounds Committee.

Three suitable locations were identified by Graeme Robertson and Bruce Corrie (Manager Facilities). Two of these locations were later discovered to be too small and not fit the template. The third option required the removal of significant structures around the school which we were assured would be replaced.

We have recently been informed (to our dismay) by Alex Barnard (Incoll Management Pty Ltd) that they will no longer be replacing these!?

I have therefore been directed to you by Alex Barnard to request consequential works funding for the following structures and await your response regarding the replacement funding:

- **1 x 30metre by 7metre storage shed with 5 roller doors (All the equipment that was stored in these sheds remains outside, under a shade shed and not locked away, as we have no other storage space).**
- **1x full size concrete basketball court, with markings, hoops, backboards and poles.**
- **Replacement of recently installed sprinkler systems around the new building.**
- **The removal and relocation of shade structure as per master plan.**
- **Covered way linking new building to existing structures.**

These items will be discussed as part of our brief to the Senate Inquiry.

Yours faithfully,

**Campbell McKay
Principal**

McKay, Campbell C

From: McKay, Campbell C
Sent: Wednesday, 14 April 2010 4:24 PM
To: Stewart, Peter JP
Cc: Whiteacre, James R; Weir, Gary GD; 'Mick & Kaye Doolan'; 'j.forrest.mp@aph.gov.au'; Walsh, Peter (PARL)
Subject: Swan Hill North Primary School Air Conditioning

Dear Peter,

I write on behalf of the Swan Hill North Primary School Council in a last ditch effort that our community **be heard**.

Andrew Dalgleish and I have had numerous communications **about** the air conditioning in our new BER **building**.

In short **refrigerated air conditioning in Swan Hill is essential and evaporative doesn't work**.

Disappointingly we have not been engaged in any of the **consultation** process that has resulted in our **school having** evaporative systems installed yet this is the one item **consistently requested as essential throughout the whole process** with paper work that dates back to early last year. Alex Barnard from Incoll has been central in this negotiation. With our letter to the Deputy Prime Minister stating we would be engaged in consultation.

Furthermore we have been told that it is not D.E.E.C.D. policy to **not** install refrigerated split systems in **schools** yet when I read the policy Andrew referred to, the information was **quite** different. The policy states that **Libraries** (our new building is a 21st Century Library Learning Neighbourhood) **should** not have evaporative systems – See page 53 of the Building Quality Standards Handbook. Nowhere does it **say** that you can't have split systems **which was** the thrust of the early responses. In fact it actually states that we **should** have split systems based on our **building type**.

I am at a loss when Andrew tells me that the decisions about air conditioners is based on humidity...**What about** temperatures of 40+ degrees for a week or more at a time? **Simply put**, the evaporative air conditioners **with 20+** children in the room leave classroom temperatures here in Swan Hill for nearly 3 months of the year around 35 degrees Celsius.

Objective 2 of the Building Education Revolution Guidelines is:

- *Build learning environments to help children, families and communities participate in activities that will support achievement, develop learning potential and bring communities together.*

This inadequate cooling is clearly not providing a learning environment that will support 'achievement & learning potential' and this inaction and the misleading information we have received has certainly not brought our community together in a positive way.

We have a community up in arms and this was recently front page news here in Swan Hill. We have not invented a need for refrigerated air conditioning, as when we surveyed the Swan Hill North Primary School community in relation to the National School Pride funding grant every group, Students, Parents and Staff all prioritised refrigerated air conditioners. Yet we were unable to get them as part of the NSP funding for the remainder of the school as they didn't fit the funding 'criteria'. Sadly there are many days where we leave it up to parents as to whether they send their child to school due to the excessive heat.

Two schools, one 10 km's North and the other 10km's south of us have split systems as part of their BER funding.

An acceptable compromise:

We understand that the engineering of a ducted system with our template would be costly. We would be happy to settle for individual split system units in the 4 classrooms and open plan library area.

Swan Hill North Primary School



Principals Report – Swan Hill North Primary School Council

Monday 9th of November, 2009

Staff and Enrolments:

We have had a disappointing turn out for our first Prep session (although this happened last year). We knew our numbers would be lower in light of the small year group in Swan Hill. We have been very active in getting out to preschools. I have resent Prep Transition Session times info to Kunawa and North Preschools. There are 3 ads to be in the Guardian the next 3 Fridays and I have invited the guardian to interview us about our excellent Prep program hopefully demystifying why we have implemented the Australian Developmental Curriculum and its benefits.

School Activities:

The school fete has been cancelled due to grounds and building not being finished.

Professional Development:

Jared has attended computer training in Mildura.

Lyn is off to Melbourne for Behaviour Therapy Training.

Petrina has continued her development in Mildura as Numeracy Coordinator.

The Junior Team will be involved in an online trial using videoconferencing to develop their skills to teach music with a teacher in Melbourne.

General Business:

Performance Pay - We have been randomly selected to begin this program in 2011.

New Buildings - We are not getting much 'support' with the new building program. They are not prepared to make any decisions about what we are getting so we are left in a difficult position second guessing what we might or might not get. I refer to the shedding they have said will be replaced 'contingent' to funding. I am also worried about the rebound wall and basket ball court. Hence the agenda items up for discussion. We need to make some firm decisions on what we are going to do. Alex Barnard (who oversees what is spent etc for the Federal Government) was sent this email today (November 5th) for our clarification:

Dear Alex,

I am following up on our conversation last month regarding replacing the storage sheds and relocation of rebound wall and cover.

The school year is coming to an abrupt year and we need to get an answer as to when these will be completed?

We have a window of opportunity now to have these completed before the end of the year, to house everything stored externally and not be at risk to the elements or theft.

We would welcome an onsite meeting with you to discuss any of these issues as the impact of the reduced storage capacity is causing considerable problems for us.

Regards,

Campbell

From: Dalgleish, Andrew AD
Sent: Tuesday, 27 April 2010 5:05 PM
To: McKay, Campbell C
Subject: Swan Hill North Primary School air conditioning
Importance: High

Dear Campbell,

I have been asked to provide you with feedback regarding the letter you wrote to Peter Stewart on 14th April requesting further consideration for refrigerated air conditioning to be installed at Swan Hill North Primary School instead of evaporative air conditioning.

Following further in depth review of advice previously given the following advice is provided to you.

- The BQSH sets the minimum quality criteria for all DEECD projects, including new construction and refurbishment. It has been developed to provide a consistent approach to the development of school facilities across Victoria.
- Your suggestion that the BQSH supports the school's request for a refrigerated systems is inaccurate for the following reasons:
 - o The rationale has been based on the template design having library elements within it and therefore being treated as a library.
 - o The BQSH states that it is 'generally not applicable' to use evaporative cooling in a library.
 - o The template being built at Swan Hill North Primary is predominantly classrooms and multipurpose areas, with library nodes dispersed throughout.
 - o The BQSH clearly states that it is appropriate to use evaporative cooling in classrooms.
- The BQSH section referred to offers guidance in the selection of cooling systems for various school areas where cooling is required. It is a guide only, and clearly states that the installation of any cooling plant should be justified by the amenity required and a life cycle analysis.
- In this instance both the amenity and the life cycle analysis support evaporative cooling.
- Given that the building is predominantly teaching spaces evaporative cooling provides optimal amenity to students and staff for the following reasons:
 - o Refrigerated cooling requires minimal ventilation. When access to fresh air is restricted in a classroom CO2 levels quickly rises. A high CO2 level is associated with stuffiness, drowsiness, lack of concentration and ultimately impaired learning opportunities.
 - o The maximum reduction in dry bulb temperature for this type of evaporative cooler is approximately 85% of the difference between the air entering dry bulb and wet bulb temperatures. For example in Swan Hill for 3pm February, the mean outside dry bulb temperature is 30.3 deg C and the mean wet bulb temperature is 17.7 deg C and an evaporative cooler operating under these conditions could provide a supply air dry bulb temperature of approximately 19.6 deg C. Climate data suggests that Swan Hill is an ideal climate to adopt evaporative cooling.

- o The design that is being used requires evaporative cooling for cooling and ventilation plus floor mounted LPG gas furnace heating units. The alternative to this approach would be to provide reverse cycle air conditioning. Heating performance of the reverse cycle would be very poor on frosty morning
- A life-cycle analysis supports evaporative cooling for the following reasons:
 - o capital cost are significantly lower given that adopting reverse cycle air conditioning require a substantially upgraded power supply
 - o energy costs are significantly lower (estimated 24% saving on running costs) and environmental impact (estimated 26.7% reduction in greenhouse gas emissions) compared to standard practice.
- Given that evaporative cooling will maintain comfort conditions for 98% of the year (see attached report for detail), provides better learning environments, significantly reduces both operating and capital costs and minimises impact on the environment, there is no justification to move away from its use.
- The position of DEECD and the Victorian Government is to support options with the greatest energy efficiency and which minimise the carbon footprint whilst ensuring comfort levels of students and staff. Evaporative coolers generally provide the best solution when taking these factors into consideration and is absolutely consistent with the BQSH and all other published documents.

Should you have any further questions please feel free to contact me.

Regards,

Andrew

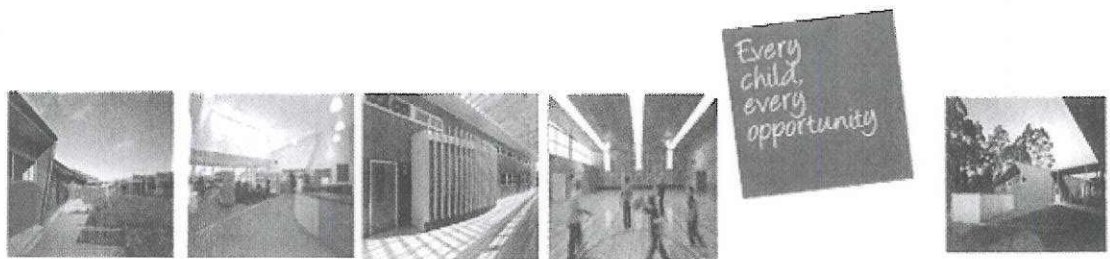
Andrew Dalglish | Building the Education Revolution Team

Department of Education and Early Childhood Development
Level 8, 1 Macarthur Place

East Melbourne VIC 3002

T: 03 9651 6104 | F: 03 9651 6111 | M: 0418 590 894

E: dalglish.andrew.ad@edumail.vic.gov.au





Australian Government

Department of Education, Employment and Workplace Relations

Your Ref
Our Ref MC09-028447

Mr Campbell McKay
Principal
Executive Officer – School Council
Swan Hill North Primary School
PO Box 992
SWAN HILL VIC 3585

Dear Mr McKay

Thank you for your letter of 19 November 2009 to the Hon Julia Gillard MP, Minister for Education, concerning the Building the Education Revolution (BER) project at Swan Hill North Primary School. The Minister has asked me to reply on her behalf. I apologise for the delay in replying.

As part of the Australian Government's \$42 billion Nation Building Economic Stimulus Plan, \$16.2 billion is being invested over 3 years for the BER program to fund infrastructure projects at primary and secondary schools.

This investment provides all eligible schools across Australia with world-class educational infrastructure that will meet the needs of our students to move into and compete in the 21st century.

The BER program is an Australian Government initiative, underpinned by a strong partnership approach with state and territory governments and non-government education authorities. The education authorities are responsible for managing the implementation of projects, while the Commonwealth has oversight of projects through a reporting system ensuring projects are implemented in accordance with BER Guidelines.

The BER program is funding over 24,000 infrastructure projects, benefitting over 9,000 schools Australia wide.

In relation to the concerns raised in your letter, the Department of Education, Employment and Workplace Relations has contacted the Victorian Department of Education and Early Childhood Development (DEECD) regarding building fitout and the reinstatement of structures dismantled to accommodate BER construction at Swan Hill North Primary School. DEECD has advised that consequential works will be considered by the DEECD, once the final cost of construction work can be ascertained.

The DEECD has further advised the costs of the School's BER project reflect tenderers' assessment of the scope of works and the market conditions that will prevail during the construction periods. It has indicated that information about individual tenders is bound by commercial in confidence requirements.

The DEECD is required to report regularly to the Commonwealth on project expenditure. This is an accountable and transparent process and will be subject to normal auditing processes.

In relation to air-conditioning, the DEECD has indicated the designs of its new BER facilities have undergone extensive environmental and sustainable design analysis and computer modelling to enhance performance and minimise running costs. With this in mind, the DEECD indicate it has chosen the most efficient cooling system for projects, such as at the Swan Hill North Primary School, to maximise cooling and provide the lowest environmental impact.

The DEECD advise all its schools receiving BER funding will receive facilities to the value of the project funds provided by the Commonwealth Government. The DEECD and the Swan Hill North Primary School's BER project manager will continue working closely with the School to address any concerns as they arise.

The DEECD has confirmed that the Swan Hill North Primary School project is expected to be completed prior to the start of Term 3. I appreciate the disappointment for the School community caused by this delay.

DEECD will work with the School to progress its request for the official opening to coincide with the School's 50th anniversary and school fete. I am informed a DEECD representative will be in contact with the School to discuss this matter.

If you have any further concerns about your BER project you may wish to contact Mr Jim Miles, Victorian Government BER State Coordinator. Mr Miles' contact details are:

Mr Jim Miles
BER State Coordinator
General Manager
Office of Resources and Infrastructure
Department of Education and Early Childhood Development
Email: Miles.Jim.P@edumail.vic.gov.au
Ph: (03) 9637 2092

Further information on the BER program can be accessed on the BER webpage at www.buildingtheeducationrevolution.gov.au.

Yours sincerely

 Ronald Jackson
A/g Branch Manager
Building the Education Revolution Taskforce

19 January 2010



GB
2210

131681

lic
87

87

Hire
&
Sales
Koraburn
Construction

GB
2210

GB 2210
LIC
87

131681







Yellow warning sign on the left door.

Stack of cardboard boxes with "For your life" printed on them.

Large roll-up door.

Grey door.

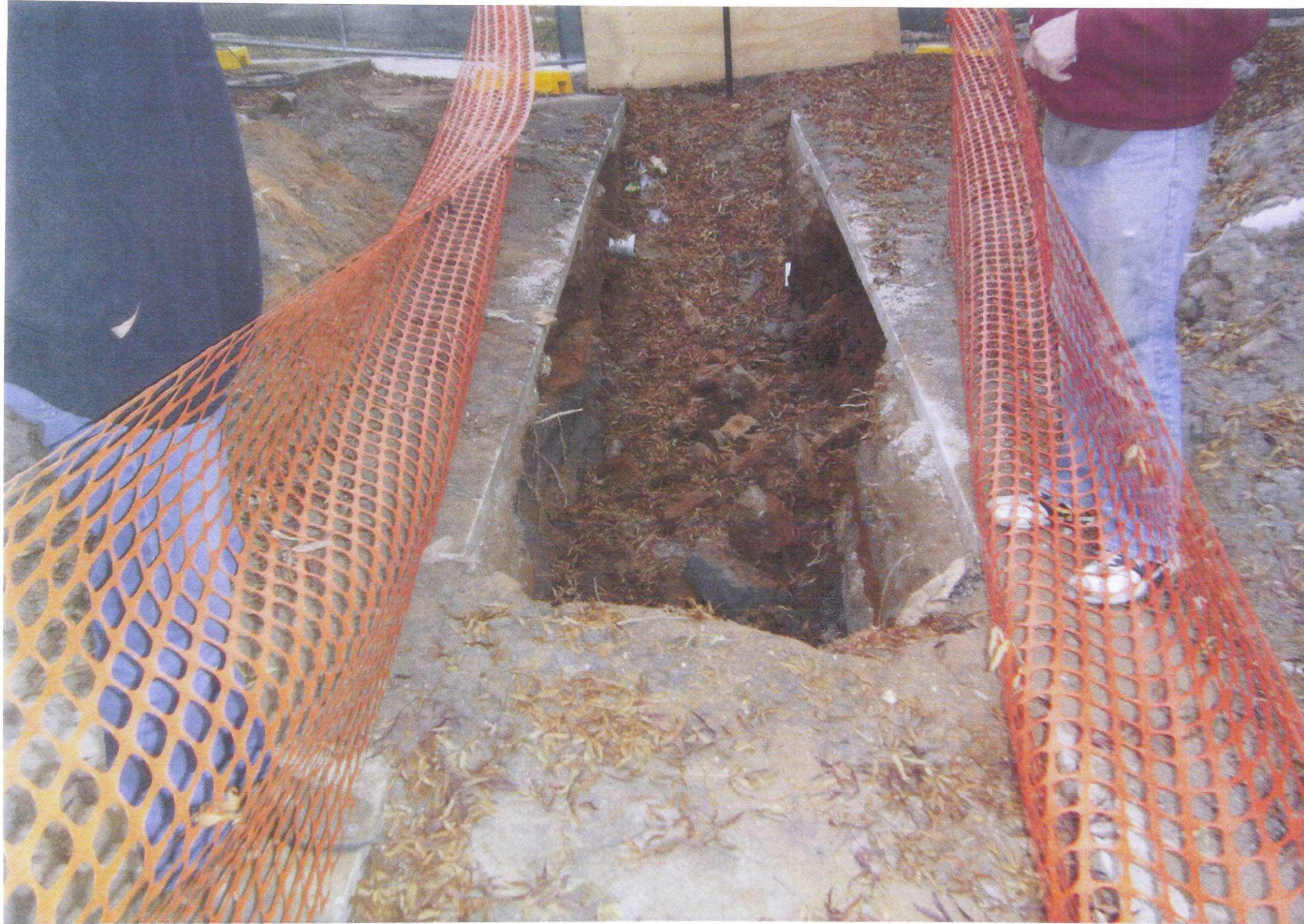
Tan door.

Dark grey door with a white vertical panel.













DANGER

**DO NOT
ENTER**





