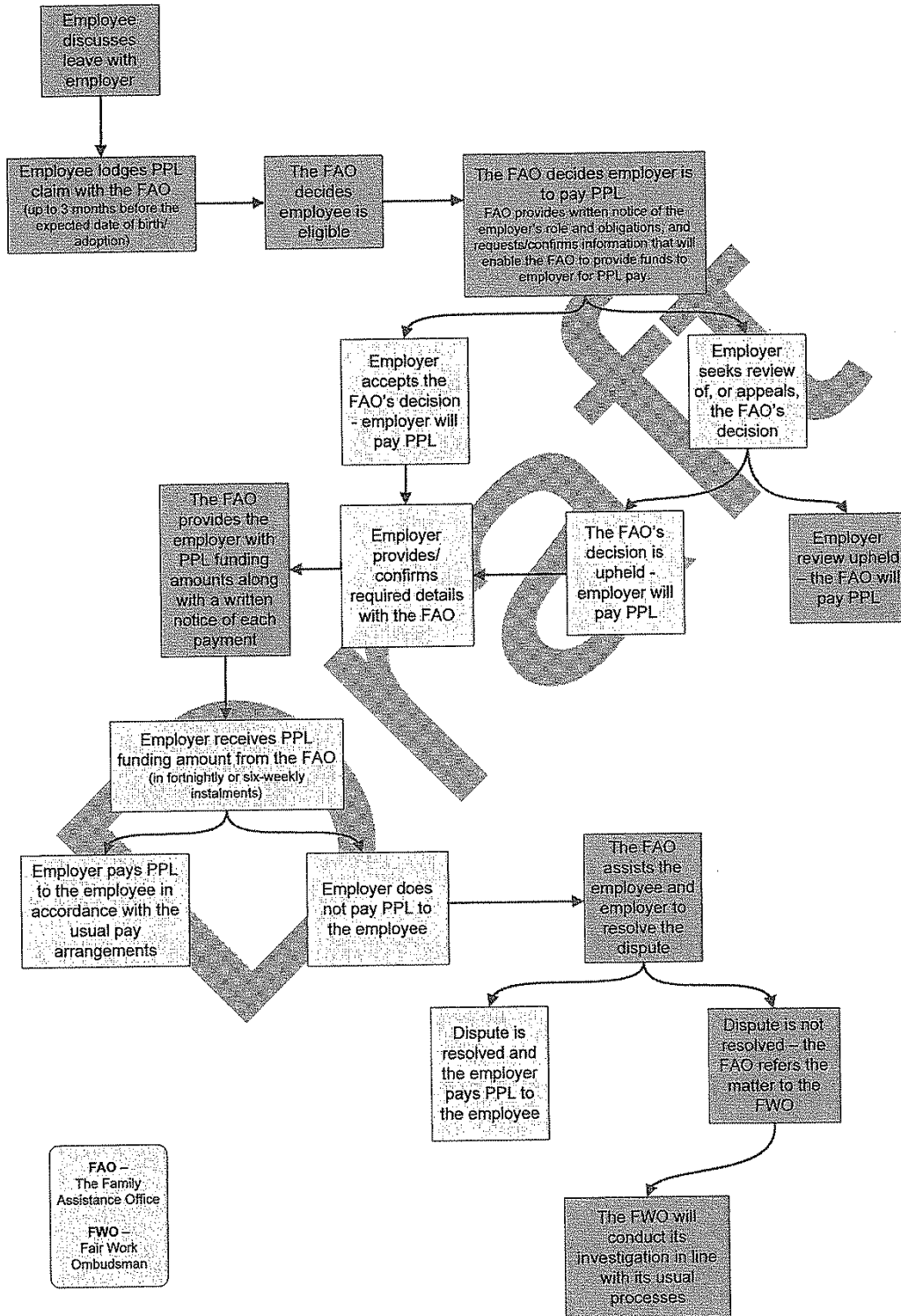


ATTACHMENT ACCI-1

PROPOSED PPL SCHEME – AUSTRALIA



NEW ZEALAND PPL SCHEME

Eligible employee fills out prescribed form



The employer fills out the employer section in the prescribed form



Employee sends the completed form to the Department of Inland Revenue



The Inland Revenue will send a confirmation of PPL amounts to employee, including the amounts, and payment dates. Payments are made directly into employee's bank accounts every fortnight.