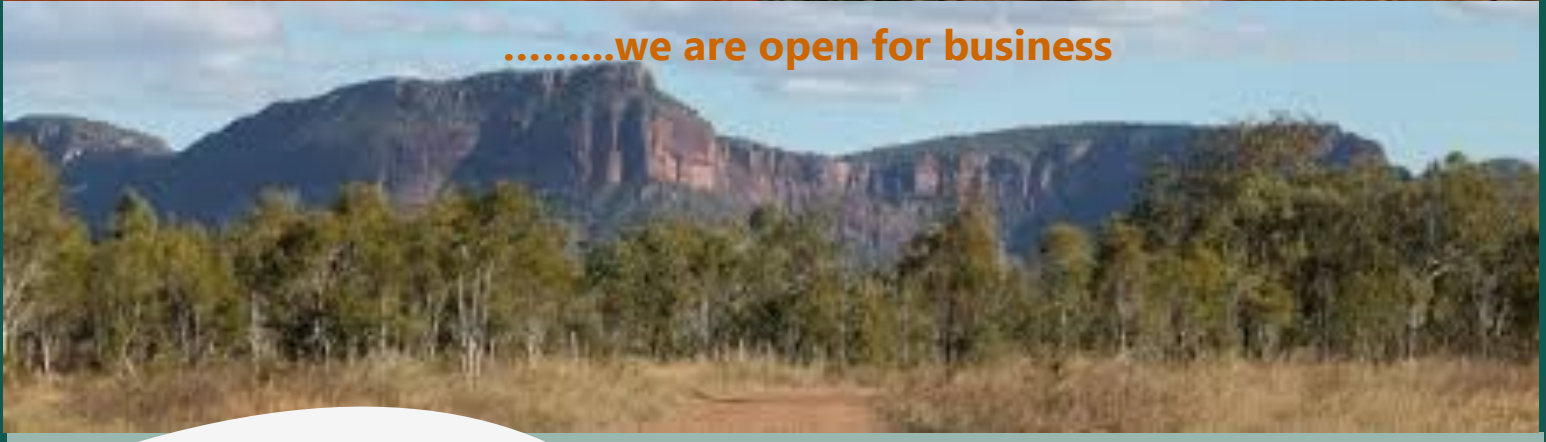


PENINSULA BUSINESS ALLIANCE



Welcome to our country...

.....we are open for business



*The One Stop Shop in Cape York for **Services, Equipment and Labour** for Civil Works, Roads and Infrastructure Projects Generally*



OUR STORY– WE ARE CAPE YORK, THIS IS OUR COUNTRY AND WE ARE HERE TO MAKE YOUR PROJECT SUCCESSFUL

In December 2014 at Musgrave Roadhouse, a ground breaking initiative began with more than 20 Indigenous senior leader representatives from Indigenous Councils, Traditional and pastoral leaseholder groups and Indigenous businesses from Laura to the Northern Peninsula Area agreeing to work in unity to realise their shared economic aspirations.

Those attending unanimously resolved to form an alliance to ensure their interests were represented in all Government and private enterprise projects within the region, and in particular the Cape York Infrastructure Project (CYIP) and bauxite developments in Western Cape York.

This organisation adopted the name Peninsula Business Alliance (PBA) and the objectives of the members are set out in the Musgrave Communiqué released in February 2015. A second meeting of members and supporters at Musgrave in March 2015 endorsed the organisation.

At its fundamental core, the PBA initiative is an expression of an overwhelming shared desire that Government and private infrastructure expenditures in Cape York are optimised for regionally based stakeholders and communities; and that the regional stakeholders participate in these projects as principals and owners.

The PBA is unique, as a voluntary and inclusive organisation, instigated and supported by indigenous stakeholders.

So far as we are aware, there are no other organisations in existence which so precisely address the remote economic development policy principles identified in the Coalition of Australian Governments' position on Closing the Gap, the Commonwealth and Queensland State Government's Indigenous Advancement Strategies and the recommendations in the Forrest Report.

WHO ARE OUR MEMBERS?

The membership and support base includes:

- all Aboriginal Councils with responsibility for the area affected by the CYIP, the Northern Peninsula Area and the bauxite province
- Indigenous landowners and landowner groups for the CYIP affected areas (including the Mein Deviation)
- Indigenous and non indigenous businesses from Lakeland to Bamaga.
- Affected pastoral leaseholders many of whom have construction equipment and skills

A list of current members and contact personnel may be obtained by contacting the PBA Administration by email.

Why use the PBA member network?

- *We have local knowledge, experience and geographical representation throughout Cape York*
- *Our members are fully invested in creating lasting quality in our roads and infrastructure because we live them*
- *We can provide access to PBA members, services, equipment and labour through one point of contact*
- *We can help you source and price local material*
- *We can manage your community relations and your Indigenous engagement requirements*



OUR CAPACITY

Our membership network provides access to a full suite of equipment and professional capacity for our clients' needs, fully operational and guaranteed to meet all site specific specifications.

Available equipment includes:

- Graders—140M, 160H, 14H, 12G
- Dozers—D5M, D6,D7,D8,D9, D10,D11
- Backhoes— 432F
- Excavators—15T,20T, 25T, 30T, 32T, 35T
- Multi Tyre Rollers—PS300, PF300
- Vibrating rollers—CS563
- Semi side Tippers—choice of 1, 2, or 3 trailers
- Trucks and Dogs x 5
- Service Vehicles x 6
- People Carriers, Light Vehicles
- Mobile Kitchens
- Camp and Accommodation Facilities

This does not in any way represent a full equipment list /rates which are available from the PBA upon entering into a standard NDA



OUR SERVICES

Technical and professional services available to the PBA include:

- Project Managers
- Civil Engineers
- Experienced Operators and Supervisors(10—30 years plus road maintenance and construction experience)
- HR including Indigenous Training, Employment, Management, mentoring and Retention
- Community Engagement, Consultation and Cultural clearance
- Camp Establishment and Maintenance
- Accommodation, Catering and Transport

A full list of services /service provider members /rates is available from the PBA upon entering into a standard NDA

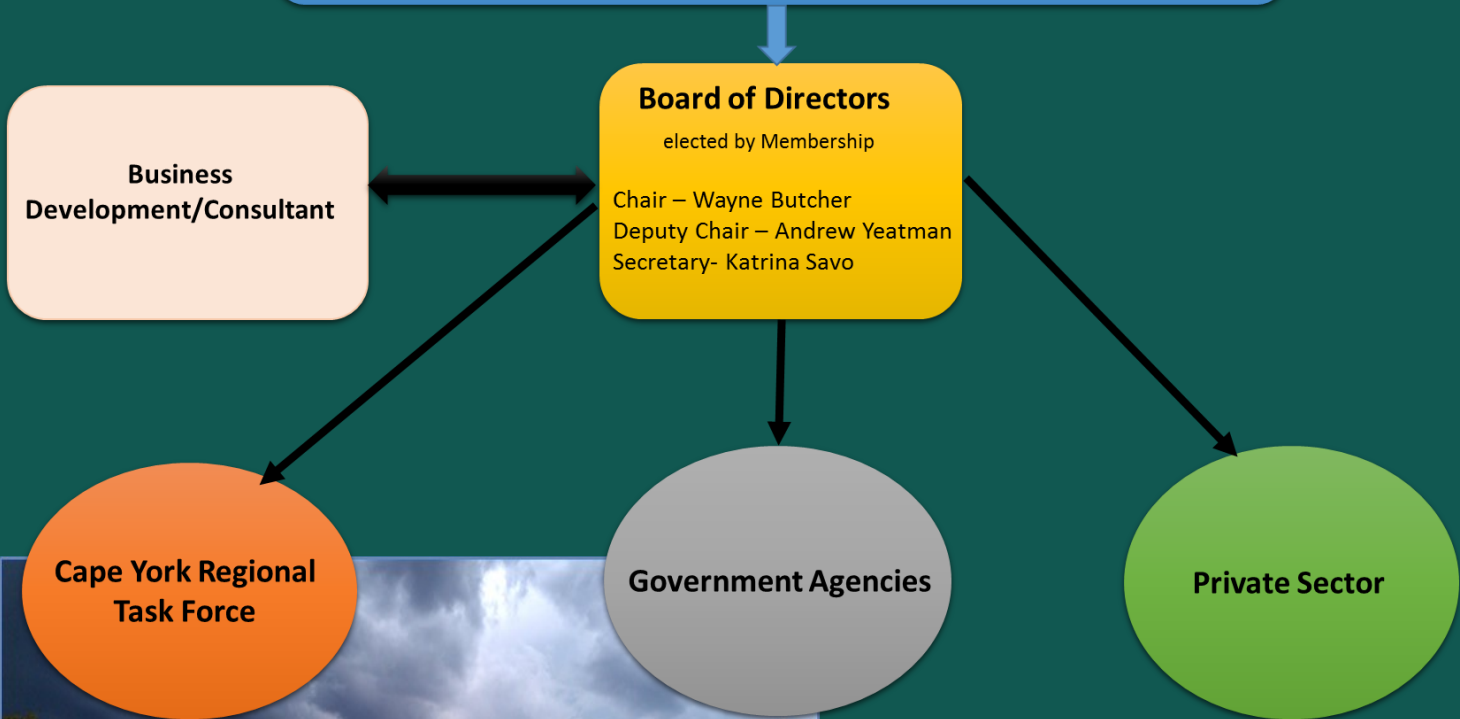


HOW DO WE OPERATE TO REPRESENT OUR MEMBERS?

PENINSULA BUSINESS ALLIANCE

(CURRENTLY NOT INCORPORATED)

Members & Reps – Cape York Resident Indigenous Shire Councils, TO Groups, Business and Pastoralist Supporters – Private Sector & government Capacity partners



SUPPORTED BY THE CAPE INDIGENOUS MAYORS ALLIANCE and INDIGENOUS SHIRE COUNCILS



SUPPORTED BY CAPE YORK BASED TRADITIONAL OWNERS, PASTORALISTS AND NON INDIGENOUS BUSINESSES

The PBA has the full support of local Traditional Owners, affected pastoralists and non indigenous businesses from Mareeba to Bamaga. This commitment was recognised and endorsed in writing in the Musgrave Accord on 22rd April 2015. Letters of Support from various Cape York entities are available for perusal.



PENINSULA BUSINESS ALLIANCE

.....we exist to deliver successful infrastructure outcomes in Cape York

Contacts

Wayne Butcher—Chair of PBA

Email: [REDACTED]

Katrina Savo—Secretary

Email - [REDACTED]

Mobile [REDACTED]