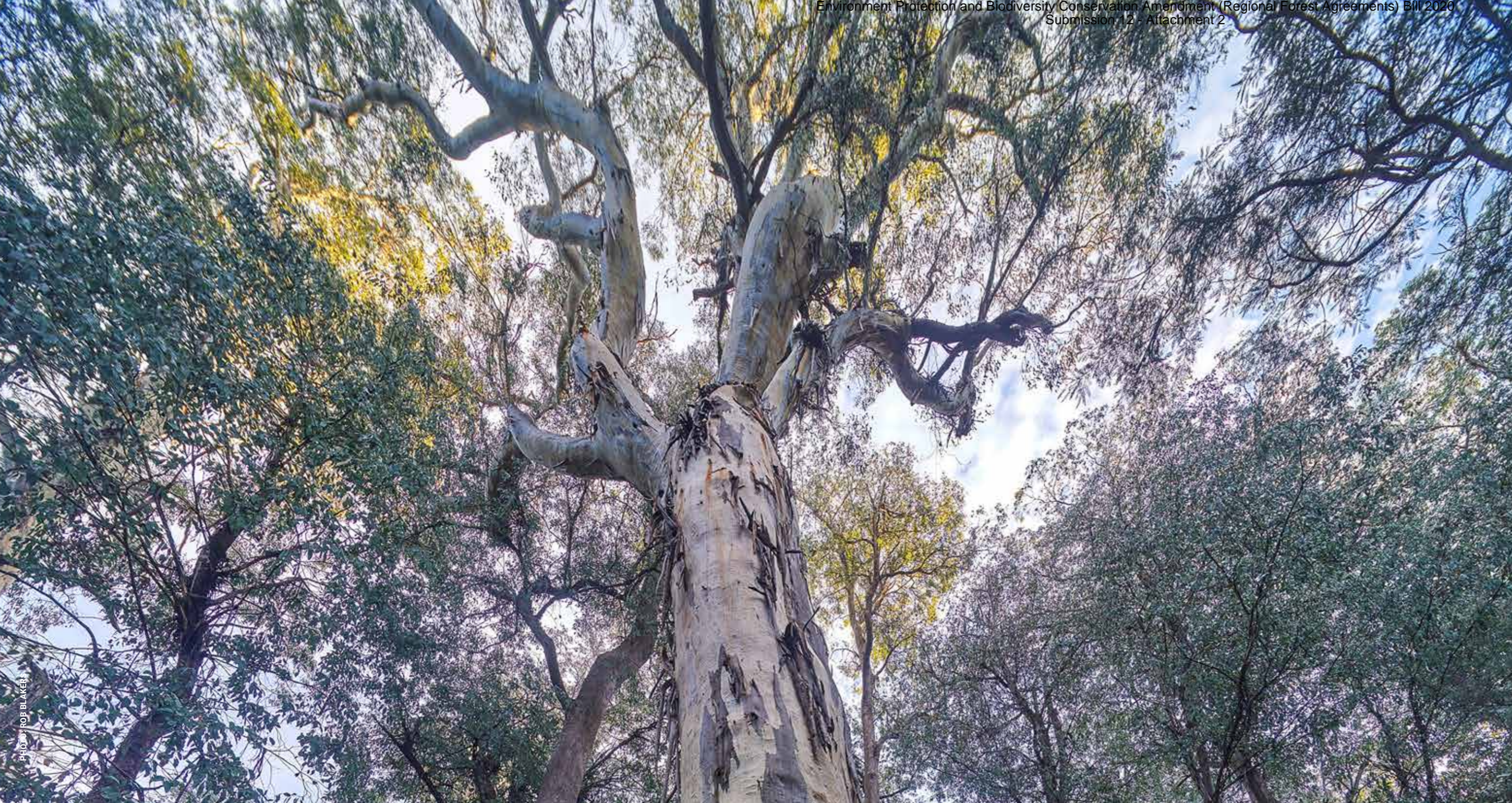


After The Fires

PROTECTING OUR FOREST REFUGES – APPENDICES

**JANUARY
2021**

**CRITICAL AREAS FOR
PROTECTING FAUNA
AND FLORA AFFECTED
BY THE 2019–20
BUSHFIRES**



These Appendices accompany the After The Fires: Protecting our Forest Refuges, January 2020 published by the Victorian National Parks Association, Goongerah Environment Centre (GECO), Fauna and Flora Research Collective, Gippsland Environment Group Inc., Environment East Gippsland and supporter by Wilderness Society.

For comment on or further information sought on the contents of this report please contact

Jordan Crook
Nature Conservation Campaigner
Victorian National Parks Association
Jordan@vnpa.org.au

Cover photo: Rob Blakers

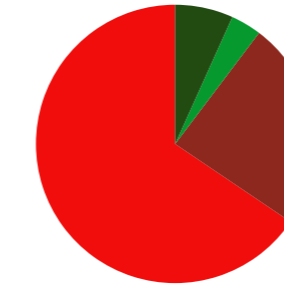
Appendices

A. Habitat Importance Analysis

Giant Burrowing Frog

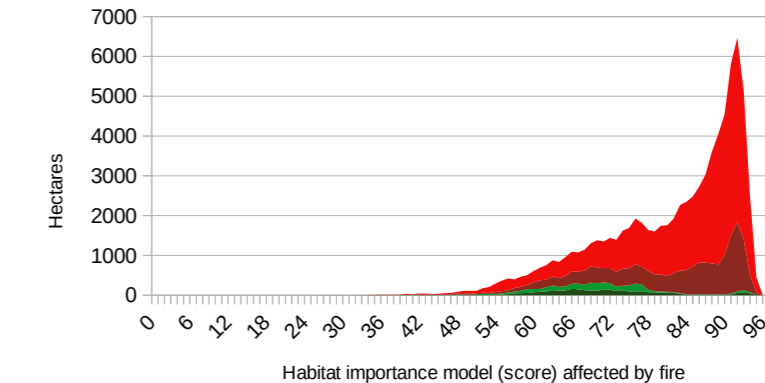
Giant Burrowing Frog - Habitat Importance Model (score) affected by 2019/20 bushfire and protected areas within 3 eastern Forest Management Areas

East Gippsland, North East, Tambo FMA's



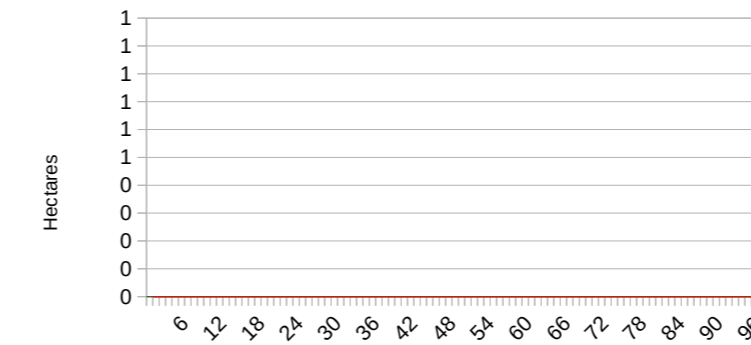
61431 hectares burnt and unprotected (66%)
 22633 hectares burnt and protected (24%)
 3338 hectares unburnt and unprotected (4%)
 6321 hectares unburnt and protected (7%)

East Gippsland Forest Management Area



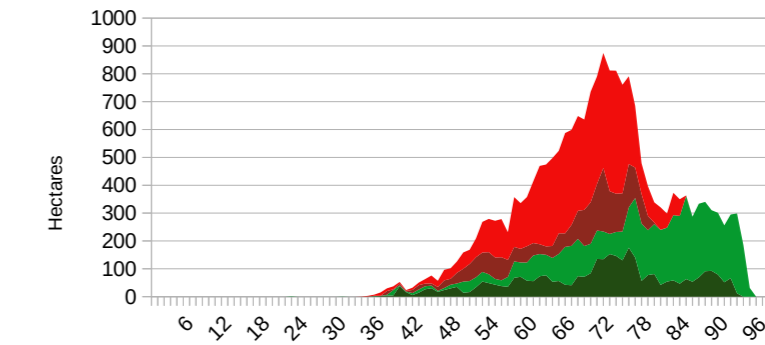
53557 hectares burnt and unprotected (67%)
 19769 hectares burnt and protected (25%)
 3338 hectares unburnt and unprotected (4%)
 2951 hectares unburnt and protected (4%)

North East Forest Management Area



0 hectares burnt and unprotected (0%)
 0 hectares burnt and protected (0%)
 0 hectares unburnt and unprotected (0%)
 0 hectares unburnt and protected (0%)

Tambo Forest Management Area



7874 hectares burnt and unprotected (39%)
 2864 hectares burnt and protected (14%)
 6250 hectares unburnt and unprotected (31%)
 3370 hectares unburnt and protected (17%)

Area figures are hectares of the species' "Habitat Importance Model" map (See: https://www.environment.vic.gov.au/_data/assets/pdf_file/0036/82989/2-NaturePrint-Habitat-Models.pdf; [data.vic.gov.au](https://www.environment.vic.gov.au/_data/assets/pdf_file/0036/82989/2-NaturePrint-Habitat-Models.pdf)) displayed in the FMA level graphs by "DN" score from 0 (lowest) to 100 (highest). "Burnt" represents those areas within the 2019/20 bushfire fire boundary polygon (Bushfires_Extract_BurnExtent_20200210) current to 10 Feb. 2020. Percentage figures are the proportion of area protected (PARKRES/SPZ) or unprotected (GMZ/SMZ/other) and burnt/unburnt per Forest Management Area.

Figure A- 1: Giant Burrowing Frog HIM analysis



PHOTO: CHRIS TAYLOR

Giant Burrowing Frog (cont).

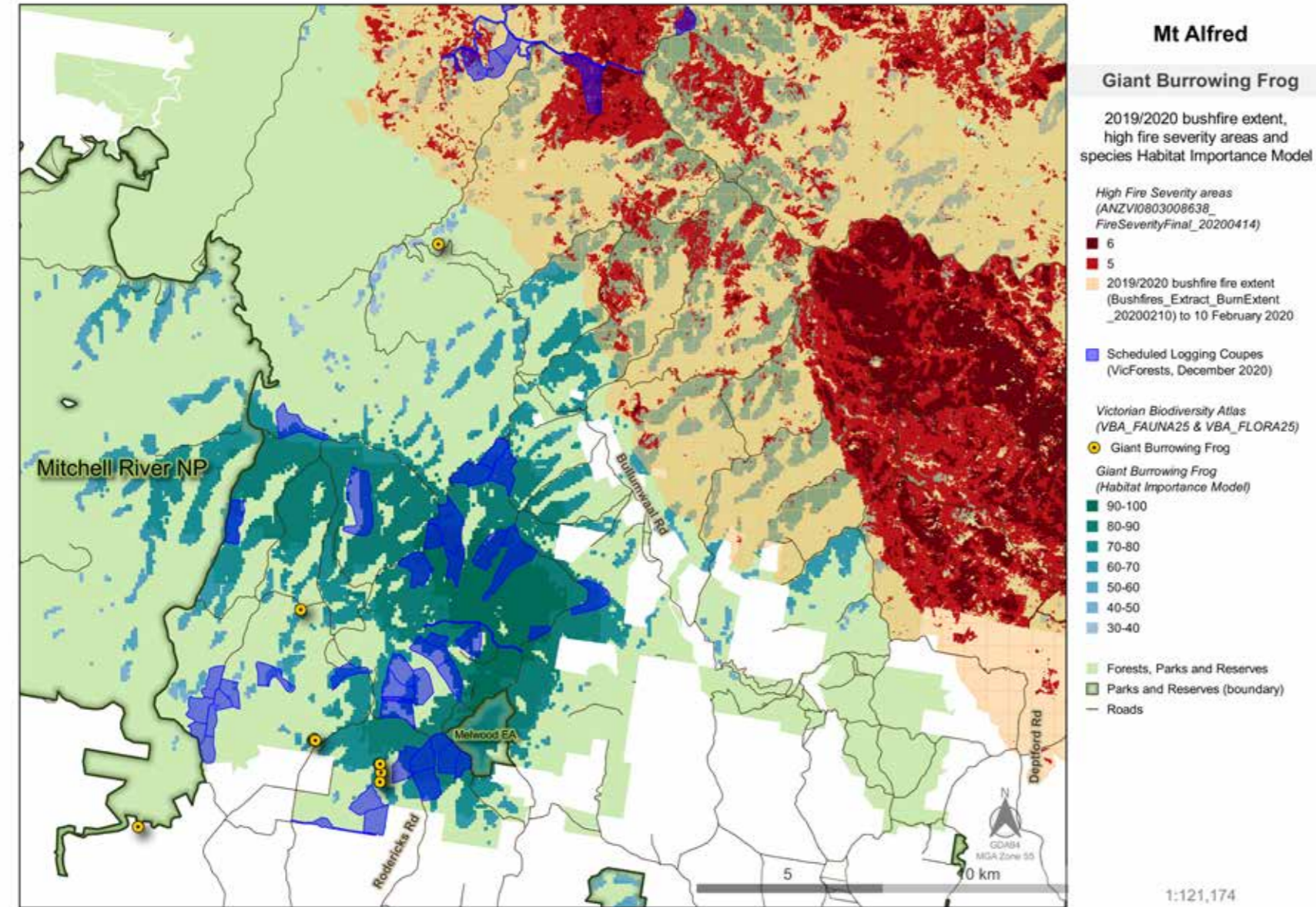
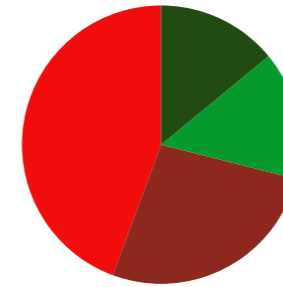


Figure A- 2: Giant Burrowing Frog habitat and detections in Mt Alfred region

Glossy Black Cockatoo

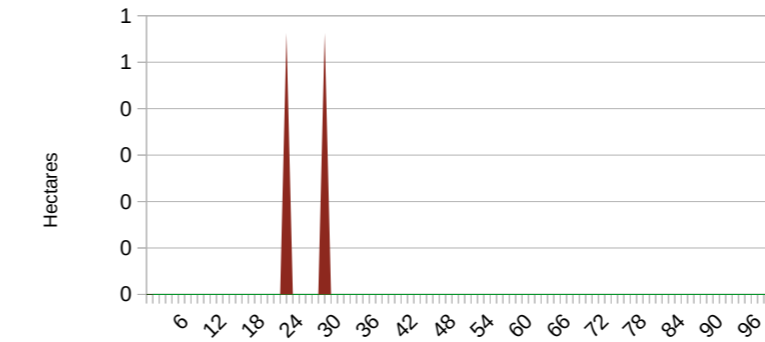
Glossy Black-Cockatoo - Habitat Importance Model (score) affected by 2019/20 bushfire and protected areas within 3 eastern Forest Management Areas

East Gippsland, North East, Tambo FMA's



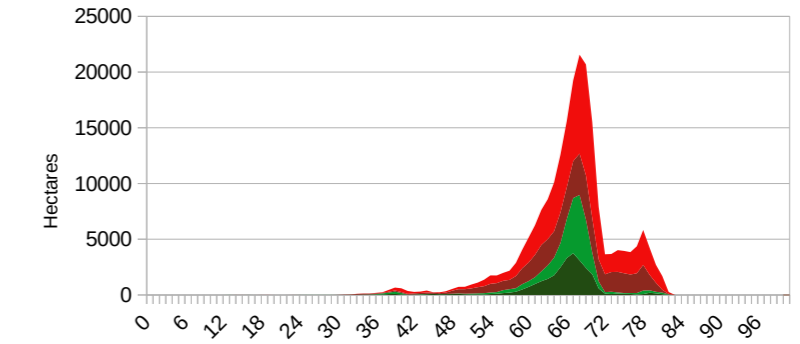
97120 hectares burnt and unprotected (44%)
58447 hectares burnt and protected (27%)
32649 hectares unburnt and unprotected (15%)
30741 hectares unburnt and protected (14%)

North East Forest Management Area



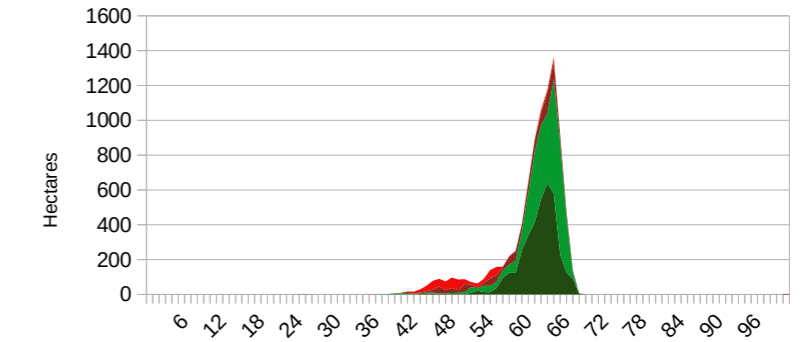
0 hectares burnt and unprotected (0%)
1 hectares burnt and protected (100%)
0 hectares unburnt and unprotected (0%)
0 hectares unburnt and protected (0%)

East Gippsland Forest Management Area



96518 hectares burnt and unprotected (45%)
57500 hectares burnt and protected (27%)
32649 hectares unburnt and unprotected (15%)
27059 hectares unburnt and protected (13%)

Tambo Forest Management Area



602 hectares burnt and unprotected (7%)
946 hectares burnt and protected (11%)
3642 hectares unburnt and unprotected (41%)
3682 hectares unburnt and protected (41%)

Area figures are hectares of the species' "Habitat Importance Model" map (See: https://www.environment.vic.gov.au/_data/assets/pdf_file/0036/82989/2-NaturePrint-Habitat-Models.pdf; [data.vic.gov.au](https://www.environment.vic.gov.au)) displayed in the FMA level graphs by "DN" score from 0 (lowest) to 100 (highest). "Burnt" represents those areas within the 2019/20 bushfire fire boundary polygon (Bushfires_Extract_BurnExtent_20200210) current to 10 Feb. 2020. Percentage figures are the proportion of area protected (PARKRES/SPZ) or unprotected (GMZ/SMZ/other) and burnt/unburnt per Forest Management Area.

Figure A- 3: Glossy Black Cockatoo HIM analysis

Glossy Black Cockatoo (cont).

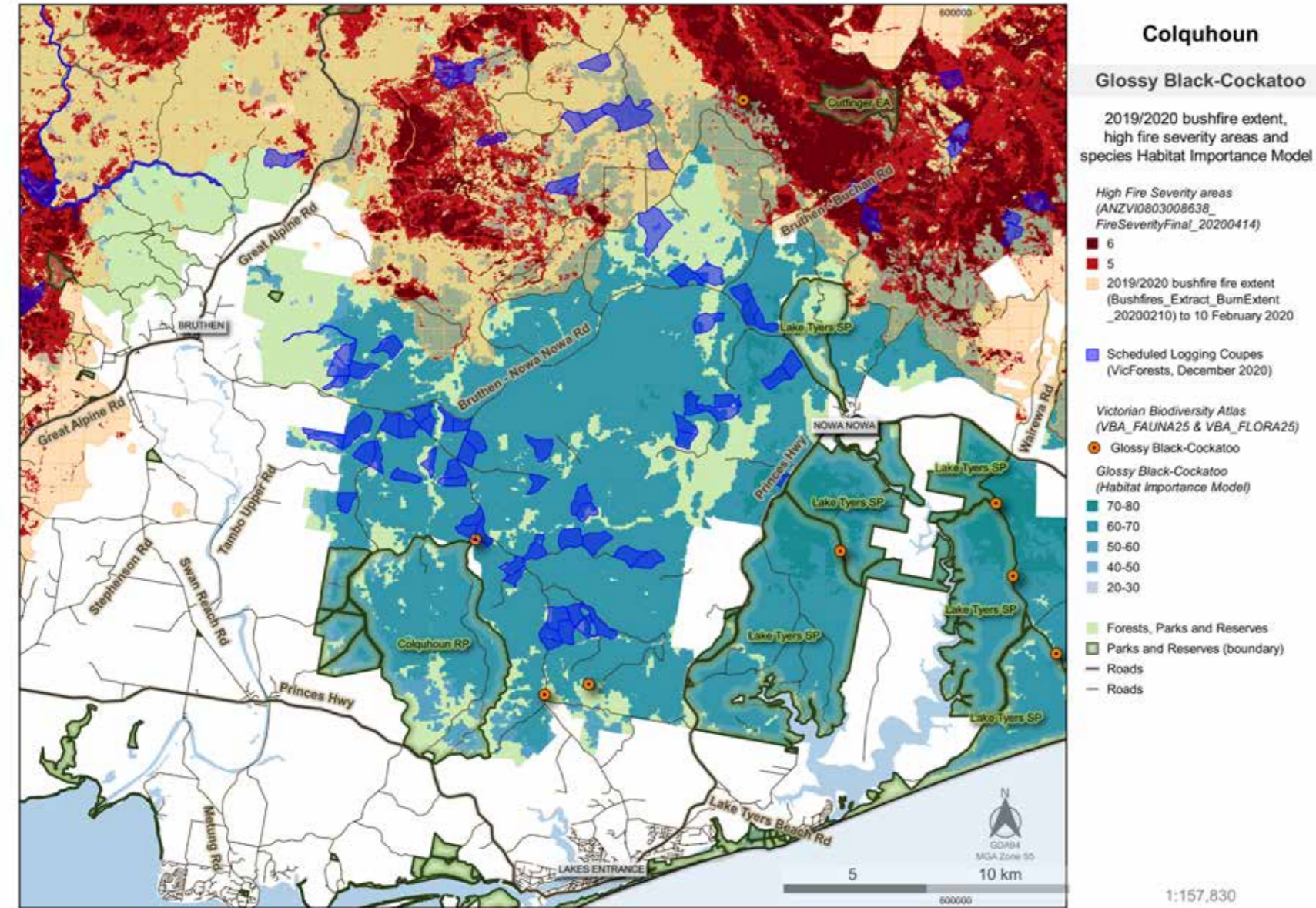


Figure A- 4: Glossy Black Cockatoo habitat and detections in Colquhoun region

Glossy Black Cockatoo (cont).

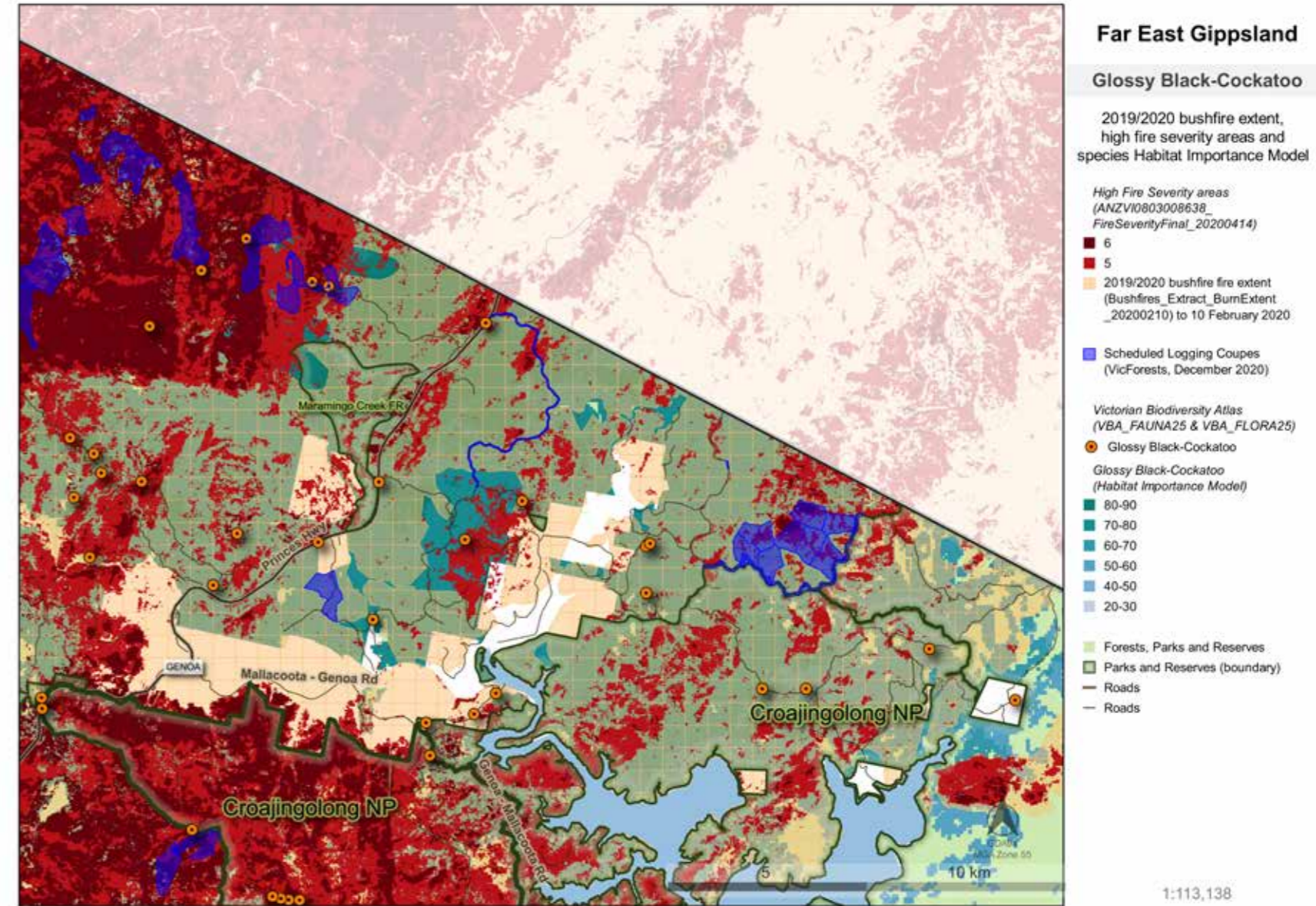
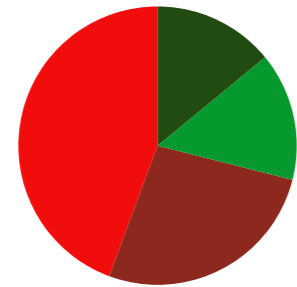


Figure A- 5: Glossy Black Cockatoo habitat and detections in Far East Gippsland region

Greater Glider

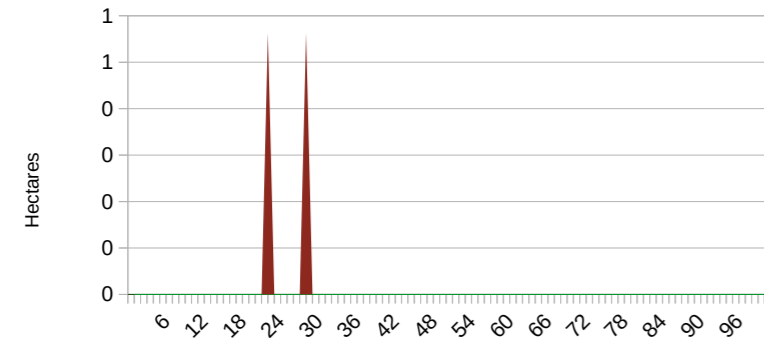
Glossy Black-Cockatoo - Habitat Importance Model (score) affected by 2019/20 bushfire and protected areas within 3 eastern Forest Management Areas

East Gippsland, North East, Tambo FMA's



■ 97120 hectares burnt and unprotected (44%) ■ 58447 hectares burnt and protected (27%)
 ■ 32649 hectares unburnt and unprotected (15%) ■ 30741 hectares unburnt and protected (14%)

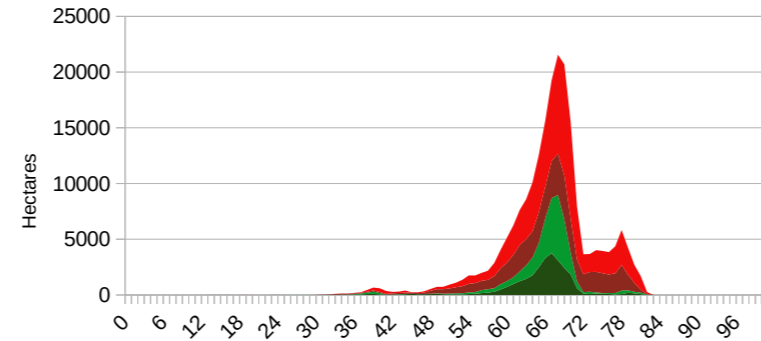
North East Forest Management Area



■ 0 hectares burnt and unprotected (0%) ■ 1 hectares burnt and protected (100%)
 ■ 0 hectares unburnt and unprotected (0%) ■ 0 hectares unburnt and protected (0%)

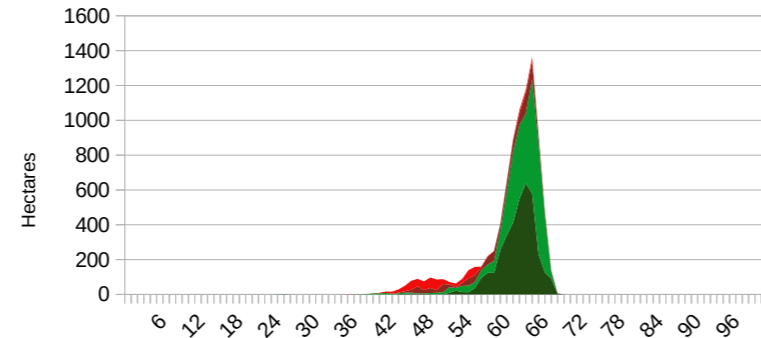
Area figures are hectares of the species "Habitat Importance Model" map (See: https://www.environment.vic.gov.au/_data/assets/pdf_file/0036/82989/2-NaturePrint-Habitat-Models.pdf; data.vic.gov.au) displayed in the FMA level graphs by "DN" score from 0 (lowest) to 100 (highest). "Burnt" represents those areas within the 2019/20 bushfire fire boundary polygon (Bushfires_Extract_BurnExtent_20200210) current to 10 Feb. 2020. Percentage figures are the proportion of area protected (PARKRES/SPZ) or unprotected (GMZ/SMZ/other) and burnt/unburnt per Forest Management Area.

East Gippsland Forest Management Area



■ 96518 hectares burnt and unprotected (45%) ■ 57500 hectares burnt and protected (27%)
 ■ 32649 hectares unburnt and unprotected (15%) ■ 27059 hectares unburnt and protected (13%)

Tambo Forest Management Area



■ 602 hectares burnt and unprotected (7%) ■ 946 hectares burnt and protected (11%)
 ■ 3642 hectares unburnt and unprotected (41%) ■ 3682 hectares unburnt and protected (41%)

Figure A- 6: Greater Glider HIM analysis

Greater Glider (cont.)

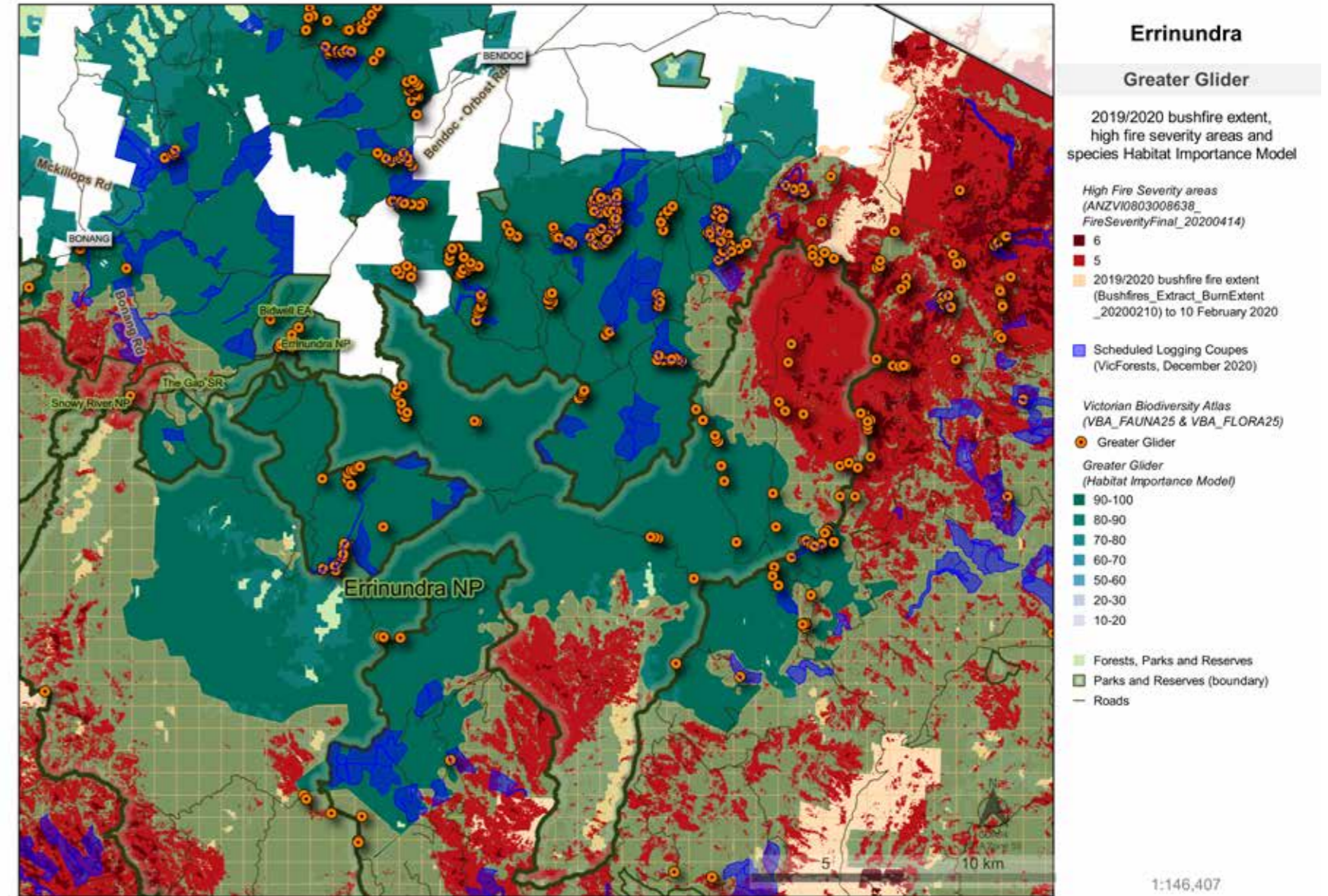


Figure A- 7: Greater Glider habitat and detections in Errinundra region

Greater Glider (cont.)

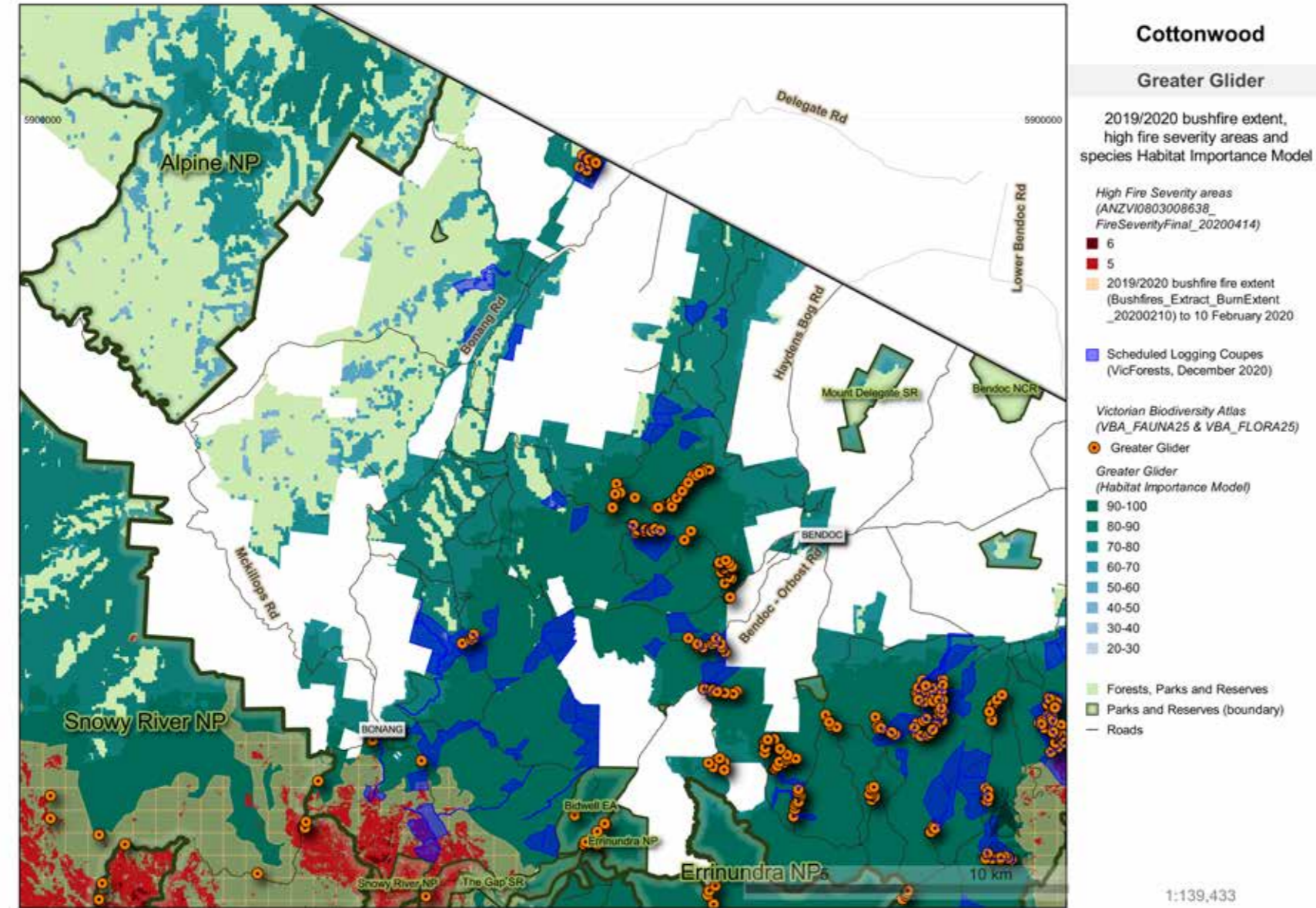


Figure A- 8: Greater Glider habitat and detections in Cottonwood region

Greater Glider (cont.)

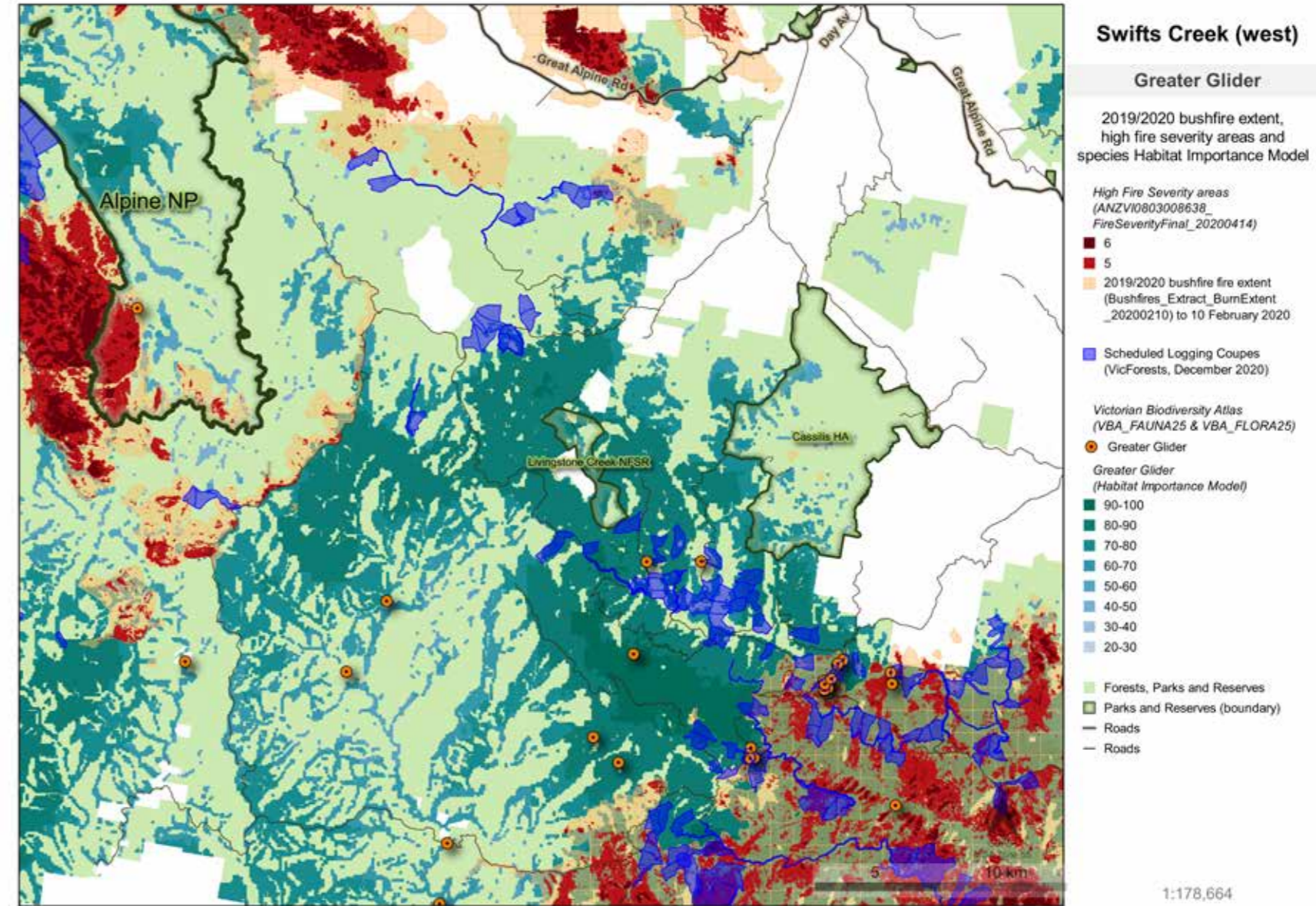


Figure A- 9: Greater Glider habitat and detections in Swifts Creek (West) region

Greater Glider (cont.)

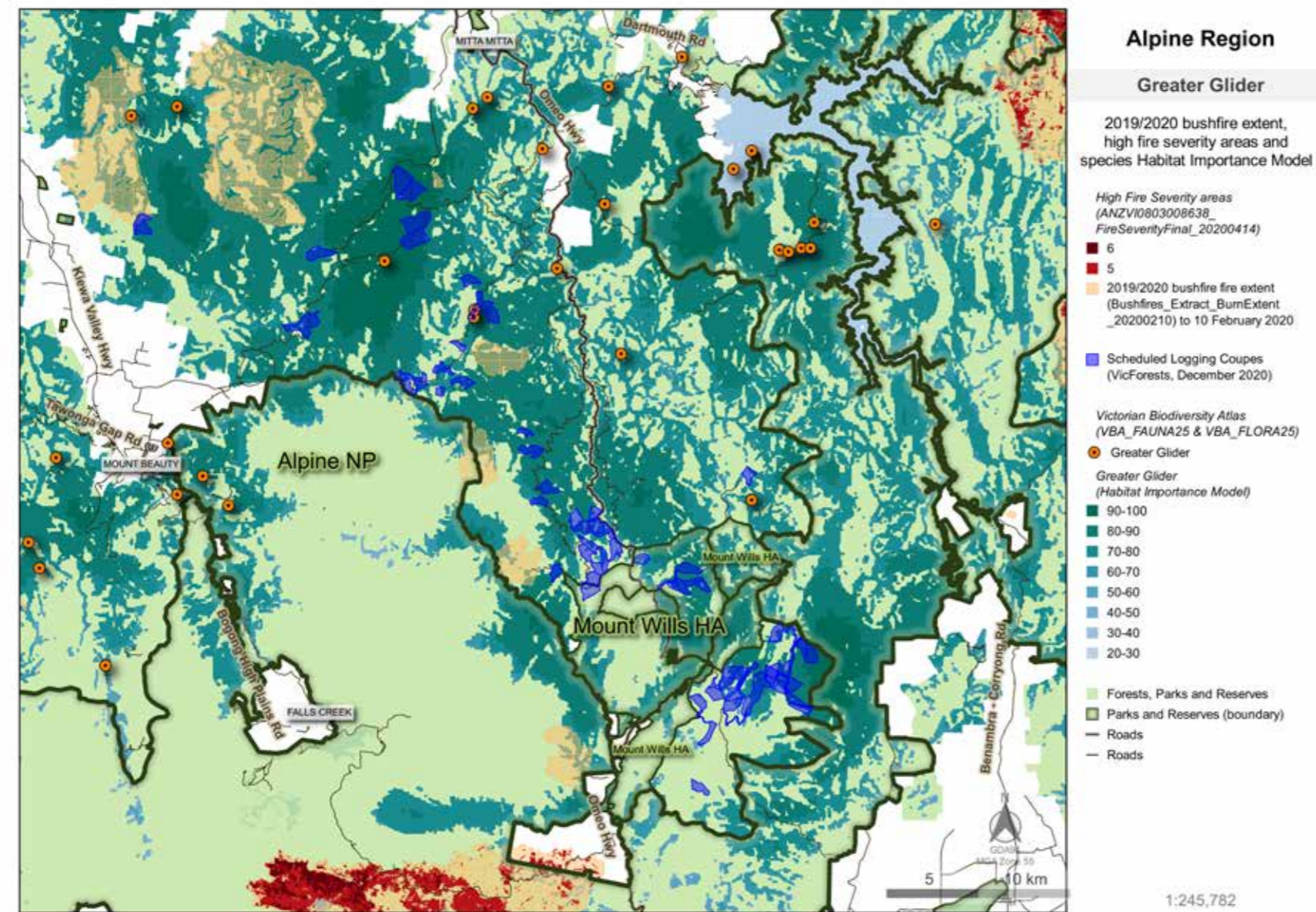
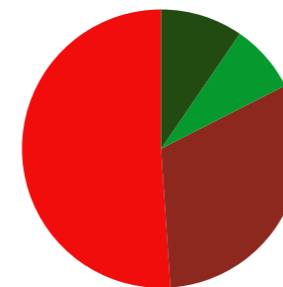


Figure A- 10: Greater Glider habitat and detections in Alpine region

Lace Monitor

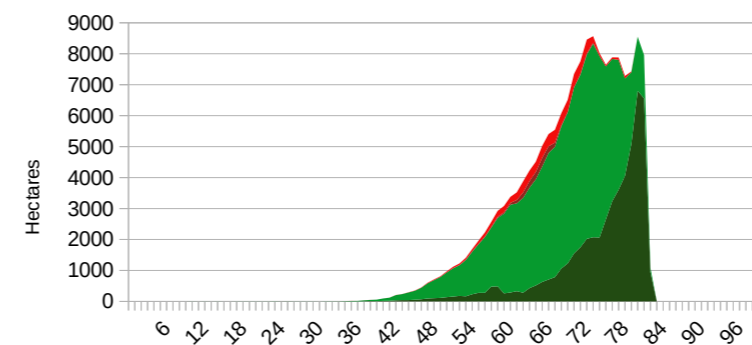
Lace Monitor - Habitat Importance Model (score) affected by 2019/20 bushfire and protected areas within 3 eastern Forest Management Areas

East Gippsland, North East, Tambo FMA's



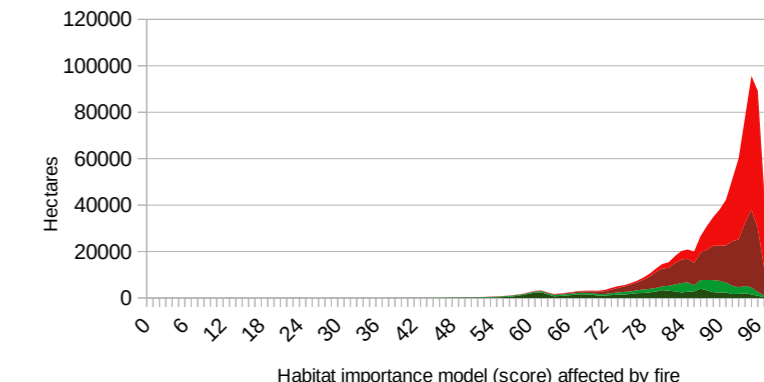
167762 hectares burnt and unprotected (51%)
103224 hectares burnt and protected (31%)
26133 hectares unburnt and unprotected (8%)
31382 hectares unburnt and protected (10%)

North East Forest Management Area



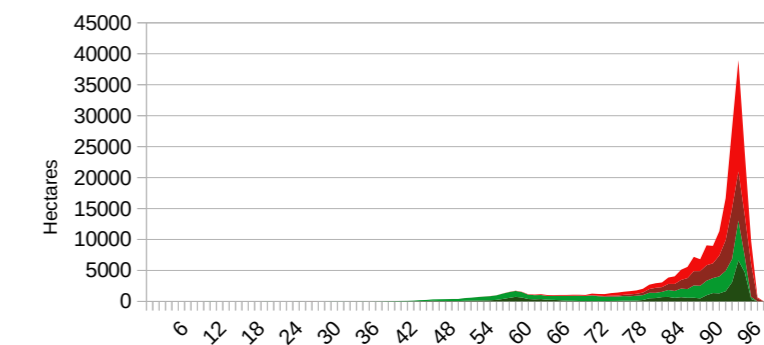
6422 hectares burnt and unprotected (4%)
1790 hectares burnt and protected (1%)
107066 hectares unburnt and unprotected (64%)
51924 hectares unburnt and protected (31%)

East Gippsland Forest Management Area



363934 hectares burnt and unprotected (44%)
305352 hectares burnt and protected (37%)
77025 hectares unburnt and unprotected (9%)
77565 hectares unburnt and protected (9%)

Tambo Forest Management Area



79159 hectares burnt and unprotected (35%)
55806 hectares burnt and protected (25%)
58657 hectares unburnt and unprotected (26%)
32374 hectares unburnt and protected (14%)

Area figures are hectares of the species' "Habitat Importance Model" map (See: https://www.environment.vic.gov.au/_data/assets/pdf_file/0036/82989/2-NaturePrint-Habitat-Models.pdf; data.vic.gov.au) displayed in the FMA level graphs by "DN" score from 0 (lowest) to 100 (highest). "Burnt" represents those areas within the 2019/20 bushfire fire boundary polygon (Bushfires_Extract_BurnExtent_20200210) current to 10 Feb. 2020. Percentage figures are the proportion of area protected (PARKRES/SPZ) or unprotected (GMZ/SMZ/other) and burnt/unburnt per Forest Management Area.

Figure A- 11: Lace Monitor HIM analysis

Lace Monitor (cont.)

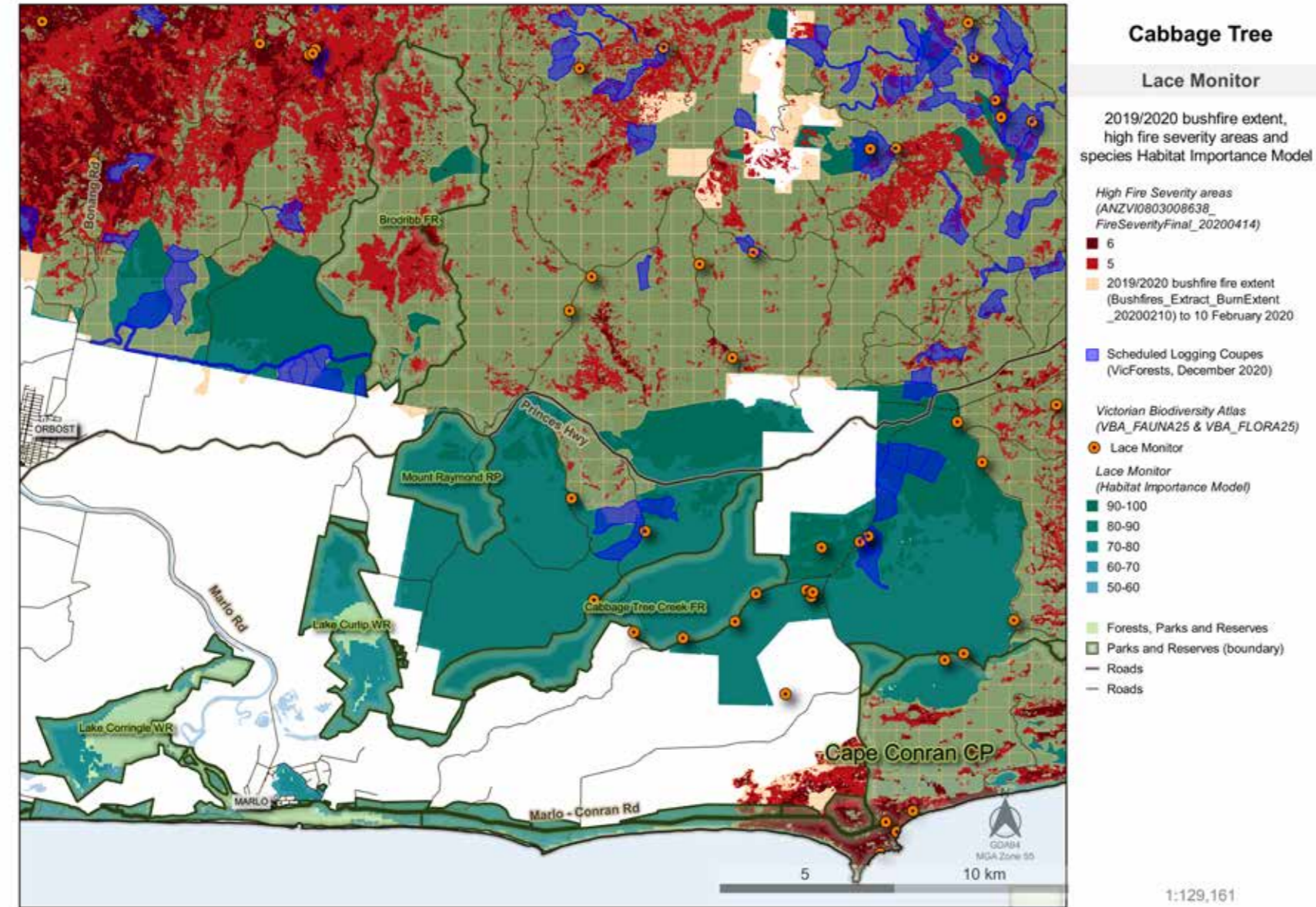
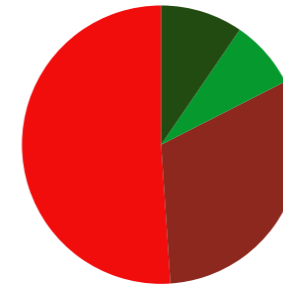


Figure A- 12: Lace Monitor habitat and detections in Cabbage Tree region

Long-footed Potoroo

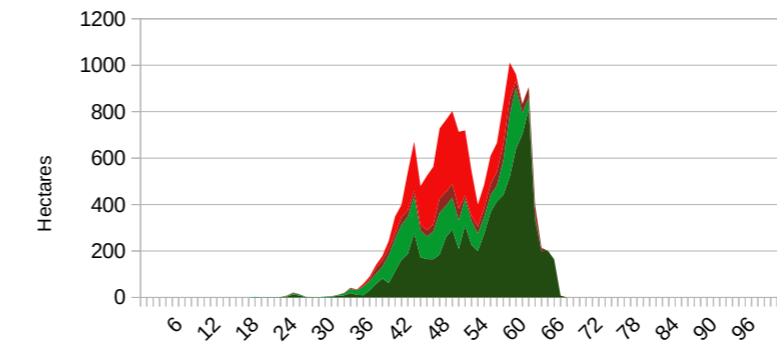
Long-footed Potoroo - Habitat Importance Model (score) affected by 2019/20 bushfire and protected areas within 3 eastern Forest Management Areas

East Gippsland, North East, Tambo FMA's



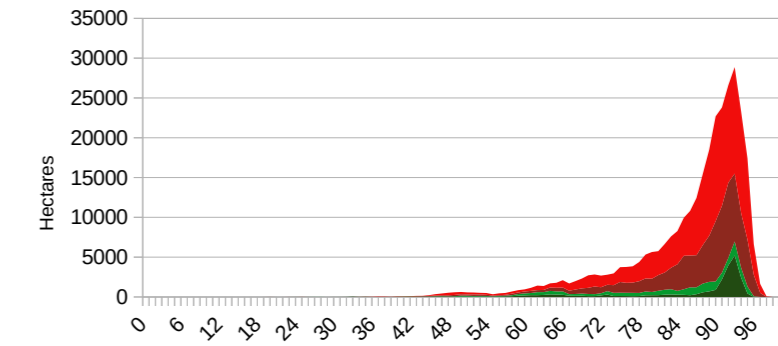
167762 hectares burnt and unprotected (51%)
 103224 hectares burnt and protected (31%)
 26133 hectares unburnt and unprotected (8%)
 31382 hectares unburnt and protected (10%)

North East Forest Management Area



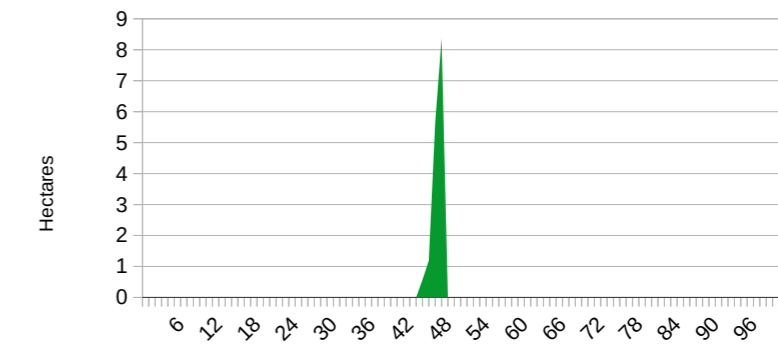
3788 hectares burnt and unprotected (23%)
 1037 hectares burnt and protected (6%)
 3228 hectares unburnt and unprotected (20%)
 8315 hectares unburnt and protected (51%)

East Gippsland Forest Management Area



163974 hectares burnt and unprotected (53%)
 102187 hectares burnt and protected (33%)
 22905 hectares unburnt and unprotected (7%)
 23067 hectares unburnt and protected (7%)

Tambo Forest Management Area



0 hectares burnt and unprotected (0%)
 0 hectares burnt and protected (0%)
 16 hectares unburnt and unprotected (100%)
 0 hectares unburnt and protected (0%)

Area figures are hectares of the species' "Habitat Importance Model" map (See: https://www.environment.vic.gov.au/_data/assets/pdf_file/0036/82989/2-NaturePrint-Habitat-Models.pdf; [data.vic.gov.au](https://www.environment.vic.gov.au)) displayed in the FMA level graphs by "DN" score from 0 (lowest) to 100 (highest). "Burnt" represents those areas within the 2019/20 bushfire fire boundary polygon (Bushfires_Extract_BurnExtent_20200210) current to 10 Feb. 2020. Percentage figures are the proportion of area protected (PARKRES/SPZ) or unprotected (GMZ/SMZ/other) and burnt/unburnt per Forest Management Area.

Figure A- 13: Long-footed Potoroo HIM analysis

Long-footed Potoroo (cont.)

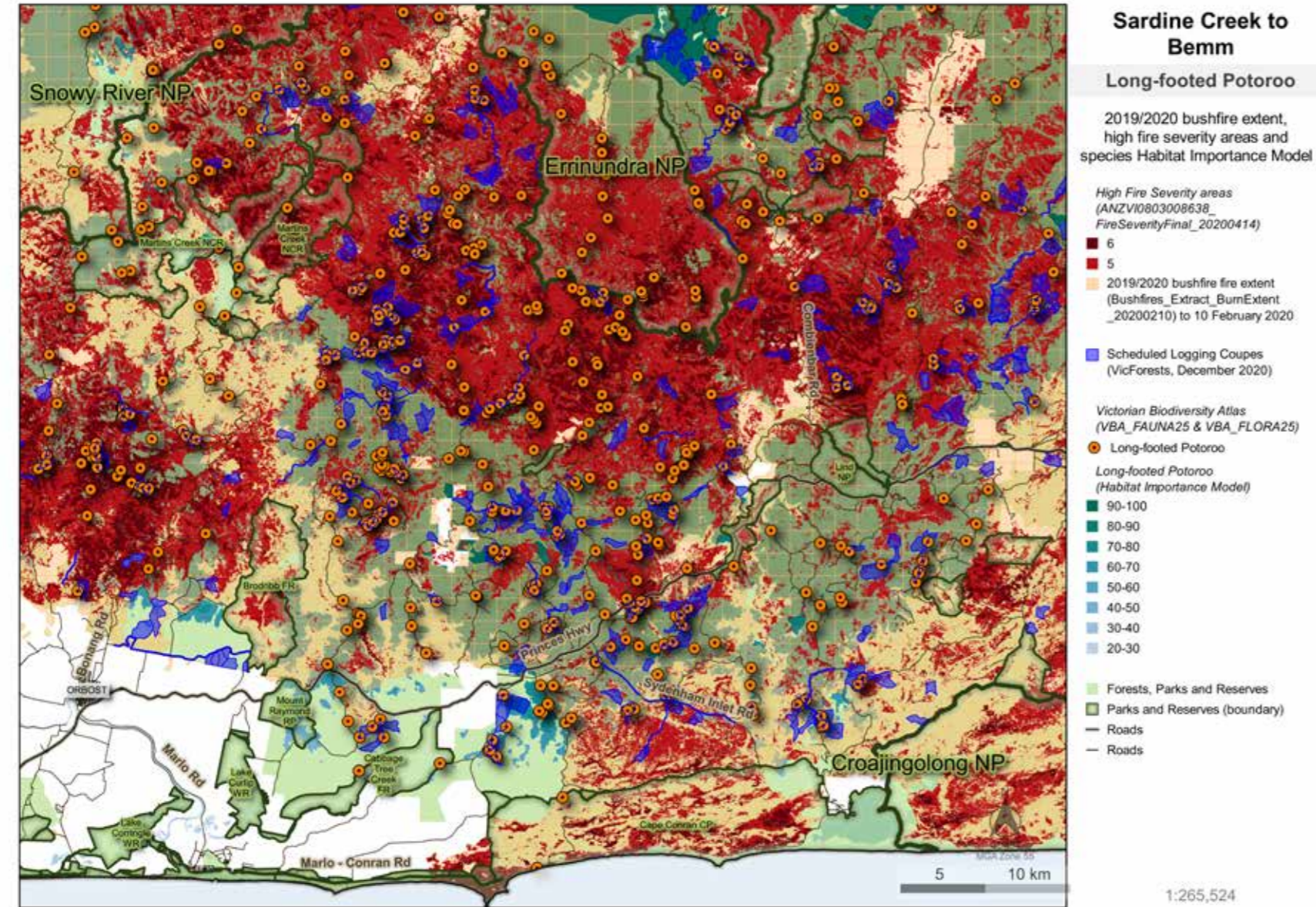
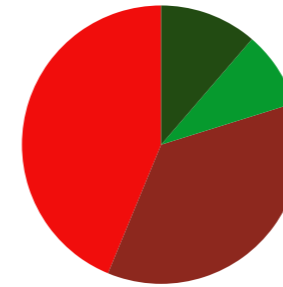


Figure A- 14: Long-footed Potoroo habitat and detections in Sardine Creek to Bemm region

Masked Owl

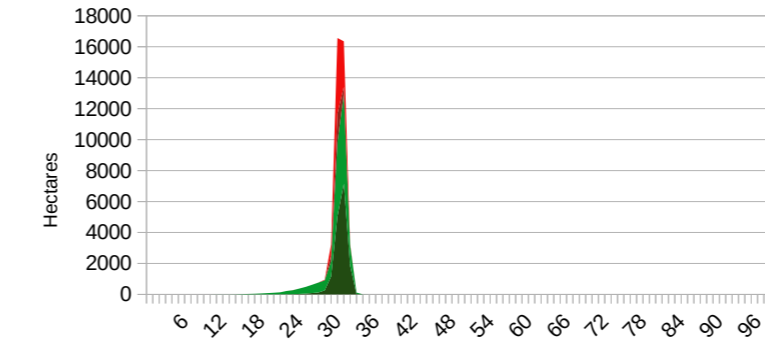
Masked Owl - Habitat Importance Model (score) affected by 2019/20 bushfire and protected areas within 3 eastern Forest Management Areas

East Gippsland, North East, Tambo FMA's



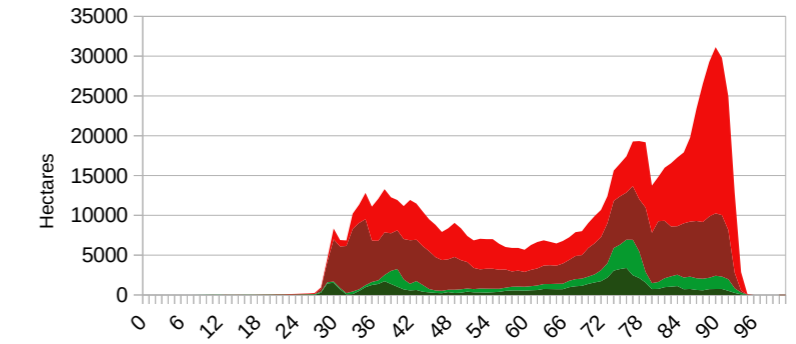
410099 hectares burnt and unprotected (44%)
337812 hectares burnt and protected (36%)
83147 hectares unburnt and unprotected (9%)
106014 hectares unburnt and protected (11%)

North East Forest Management Area



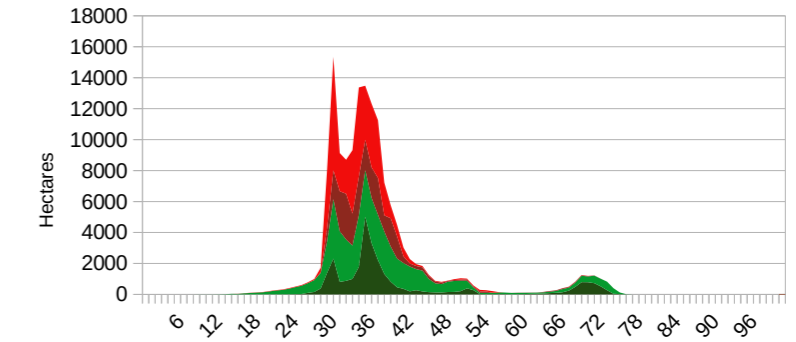
8582 hectares burnt and unprotected (20%)
2773 hectares burnt and protected (6%)
16536 hectares unburnt and unprotected (38%)
15818 hectares unburnt and protected (36%)

East Gippsland Forest Management Area



358457 hectares burnt and unprotected (45%)
309173 hectares burnt and protected (39%)
66611 hectares unburnt and unprotected (8%)
61074 hectares unburnt and protected (8%)

Tambo Forest Management Area



43060 hectares burnt and unprotected (28%)
25866 hectares burnt and protected (17%)
53280 hectares unburnt and unprotected (35%)
29122 hectares unburnt and protected (19%)

Area figures are hectares of the species' "Habitat Importance Model" map (See: https://www.environment.vic.gov.au/_data/assets/pdf_file/0036/82989/2-NaturePrint-Habitat-Models.pdf; [data.vic.gov.au](https://www.environment.vic.gov.au/_data/assets/pdf_file/0036/82989/2-NaturePrint-Habitat-Models.pdf)) displayed in the FMA level graphs by "DN" score from 0 (lowest) to 100 (highest). "Burnt" represents those areas within the 2019/20 bushfire fire boundary polygon (Bushfires_Extract_BurnExtent_20200210) current to 10 Feb. 2020. Percentage figures are the proportion of area protected (PARKRES/SPZ) or unprotected (GMZ/SMZ/other) and burnt/unburnt per Forest Management Area.

Figure A- 15: Masked Owl HIM analysis

Masked Owl (cont.)

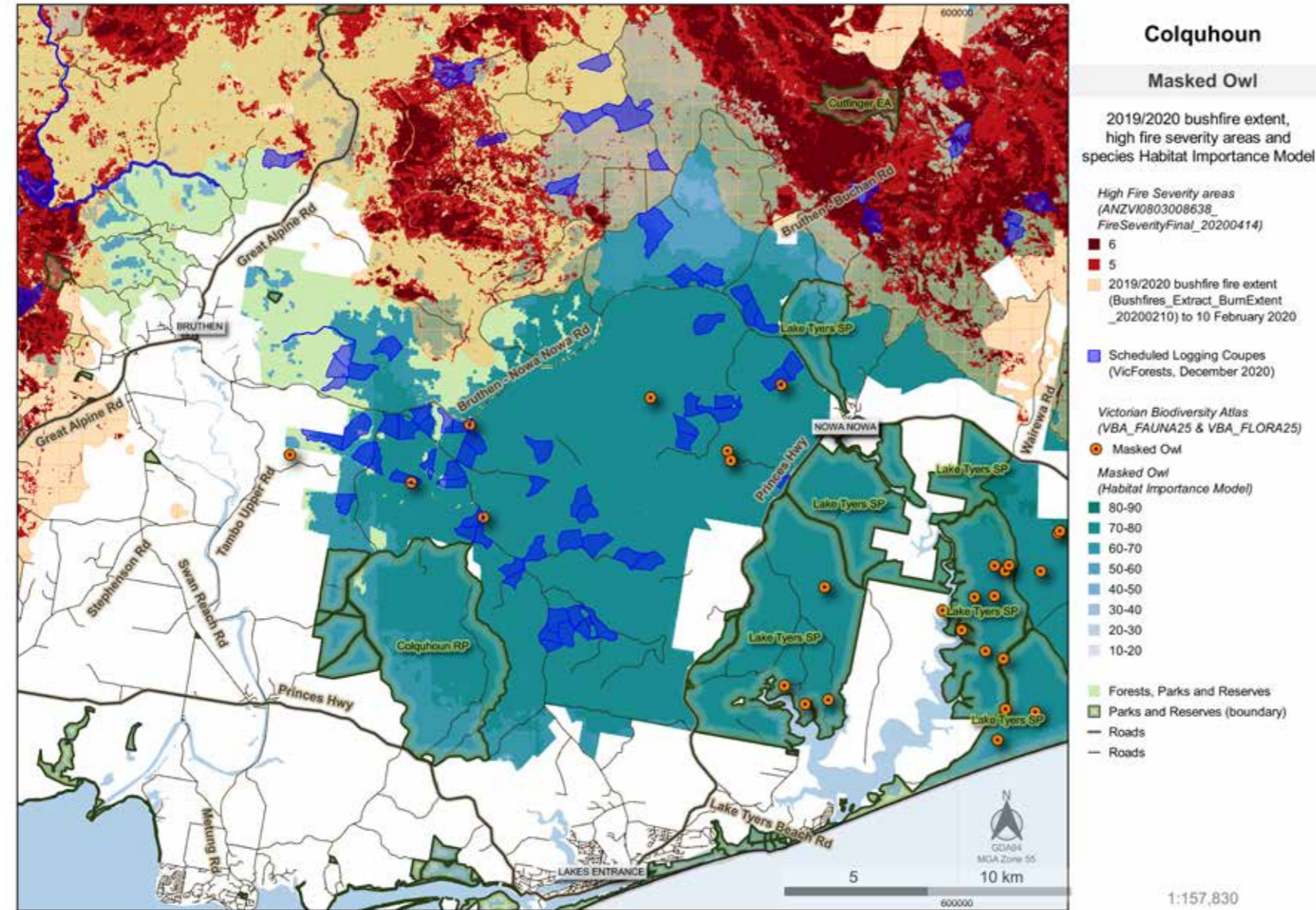
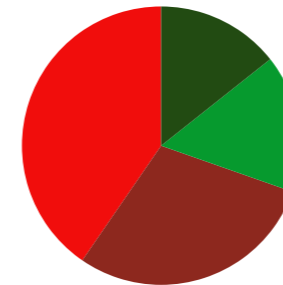


Figure A- 16: Masked Owl habitat and detections in Colquhoun region

Powerful Owl

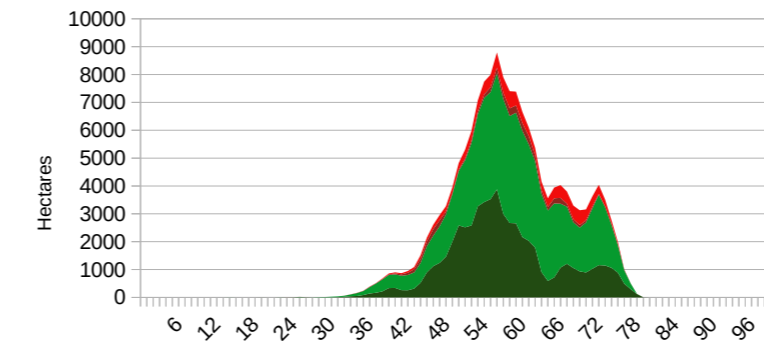
Powerful Owl - Habitat Importance Model (score) affected by 2019/20 bushfire and protected areas within 3 eastern Forest Management Areas

East Gippsland, North East, Tambo FMA's



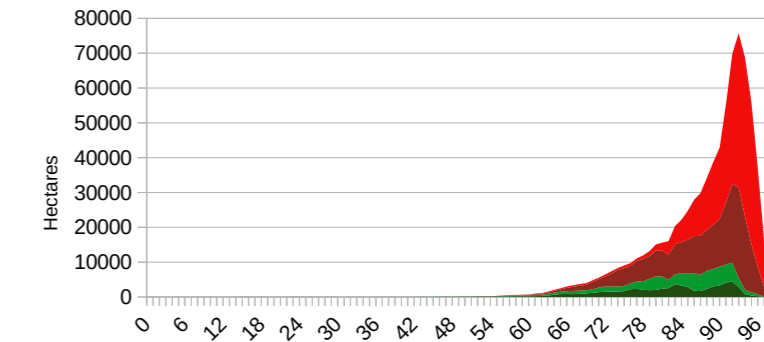
430124 hectares burnt and unprotected (40%)
310810 hectares burnt and protected (29%)
170770 hectares unburnt and unprotected (16%)
152531 hectares unburnt and protected (14%)

North East Forest Management Area



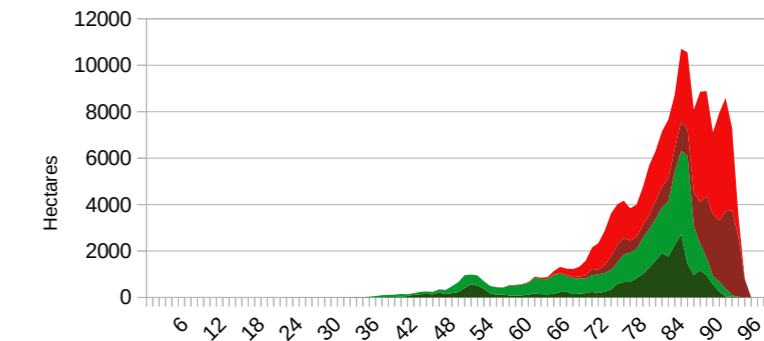
11171 hectares burnt and unprotected (7%)
4845 hectares burnt and protected (3%)
83382 hectares unburnt and unprotected (53%)
59174 hectares unburnt and protected (37%)

East Gippsland Forest Management Area



355050 hectares burnt and unprotected (45%)
272972 hectares burnt and protected (35%)
87388 hectares unburnt and unprotected (11%)
65982 hectares unburnt and protected (8%)

Tambo Forest Management Area



63903 hectares burnt and unprotected (37%)
32993 hectares burnt and protected (19%)
46497 hectares unburnt and unprotected (27%)
27376 hectares unburnt and protected (16%)

Area figures are hectares of the species' "Habitat Importance Model" map (See: https://www.environment.vic.gov.au/_data/assets/pdf_file/0036/82989/2-NaturePrint-Habitat-Models.pdf; [data.vic.gov.au](https://www.environment.vic.gov.au/_data/assets/pdf_file/0036/82989/2-NaturePrint-Habitat-Models.pdf)) displayed in the FMA level graphs by "DN" score from 0 (lowest) to 100 (highest). "Burnt" represents those areas within the 2019/20 bushfire fire boundary polygon (Bushfires_Extract_BumExtent_20200210) current to 10 Feb. 2020. Percentage figures are the proportion of area protected (PARKRES/SPZ) or unprotected (GMZ/SMZ/other) and burnt/unburnt per Forest Management Area.

Figure A- 17: Powerful Owl HIM analysis

Powerful Owl (cont.)

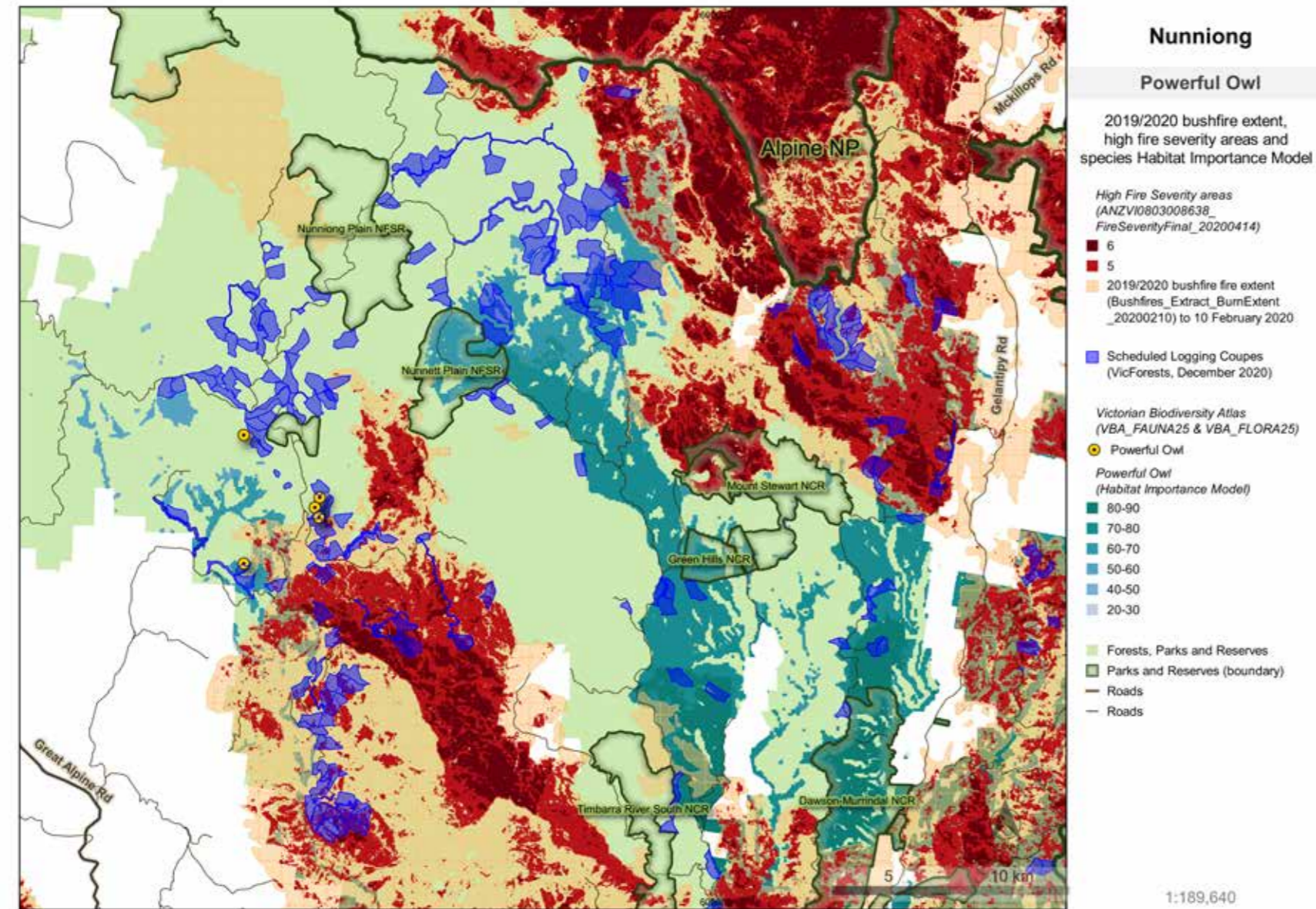
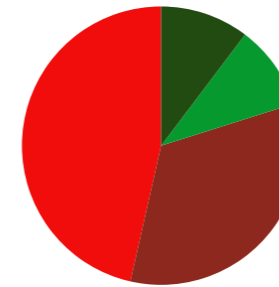


Figure A- 18: Powerful Owl habitat and detections in Nunniong region

Sooty Owl

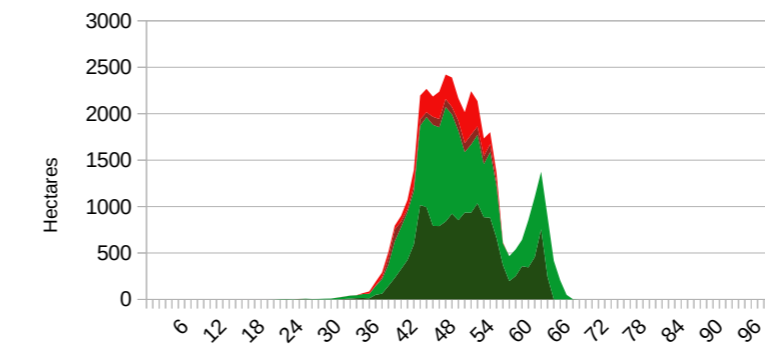
Sooty Owl - Habitat Importance Model (score) affected by 2019/20 bushfire and protected areas within 3 eastern Forest Management Areas

East Gippsland, North East, Tambo FMA's



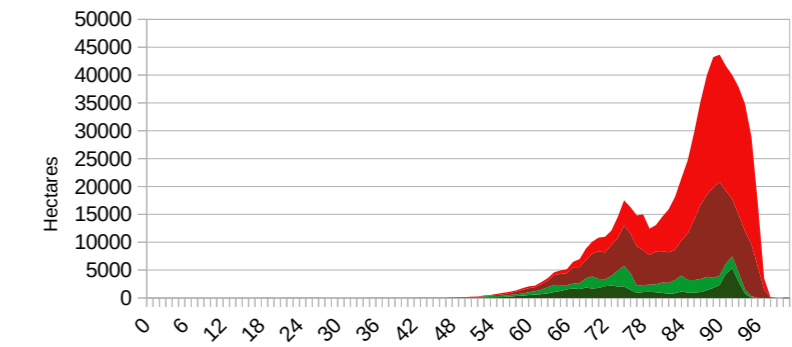
- 378912 hectares burnt and unprotected (46%)
- 272662 hectares burnt and protected (33%)
- 80148 hectares unburnt and unprotected (10%)
- 84042 hectares unburnt and protected (10%)

North East Forest Management Area



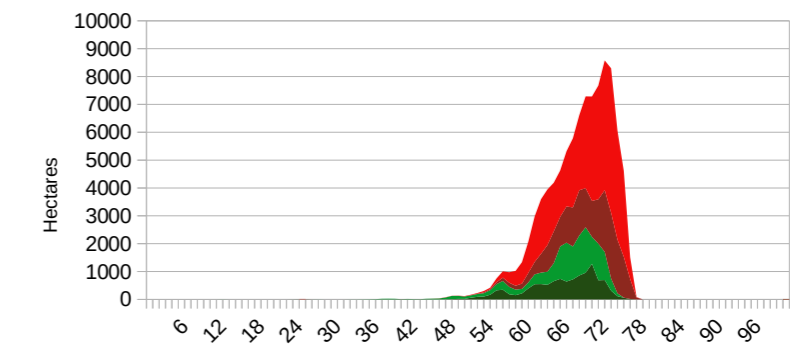
- 3905 hectares burnt and unprotected (10%)
- 1459 hectares burnt and protected (4%)
- 18022 hectares unburnt and unprotected (45%)
- 16409 hectares unburnt and protected (41%)

East Gippsland Forest Management Area



- 326754 hectares burnt and unprotected (47%)
- 248456 hectares burnt and protected (36%)
- 62126 hectares unburnt and unprotected (9%)
- 56154 hectares unburnt and protected (8%)

Tambo Forest Management Area



- 48253 hectares burnt and unprotected (50%)
- 22746 hectares burnt and protected (23%)
- 14925 hectares unburnt and unprotected (15%)
- 11479 hectares unburnt and protected (12%)

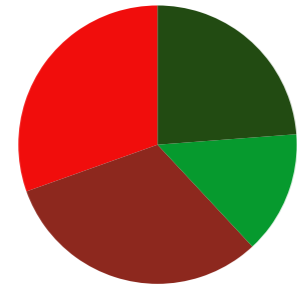
Area figures are hectares of the species' "Habitat Importance Model" map (See: https://www.environment.vic.gov.au/_data/assets/pdf_file/0036/82989/2-NaturePrint-Habitat-Models.pdf; [data.vic.gov.au](https://www.environment.vic.gov.au/_data/assets/pdf_file/0036/82989/2-NaturePrint-Habitat-Models.pdf)) displayed in the FMA level graphs by "DN" score from 0 (lowest) to 100 (highest). "Burnt" represents those areas within the 2019/20 bushfire fire boundary polygon (Bushfires_Extract_BurnExtent_20200210) current to 10 Feb. 2020. Percentage figures are the proportion of area protected (PARKRES/SPZ) or unprotected (GMZ/SMZ/other) and burnt/unburnt per Forest Management Area.

Figure A- 19: Sooty Owl HIM analysis

Spot-tailed Quoll

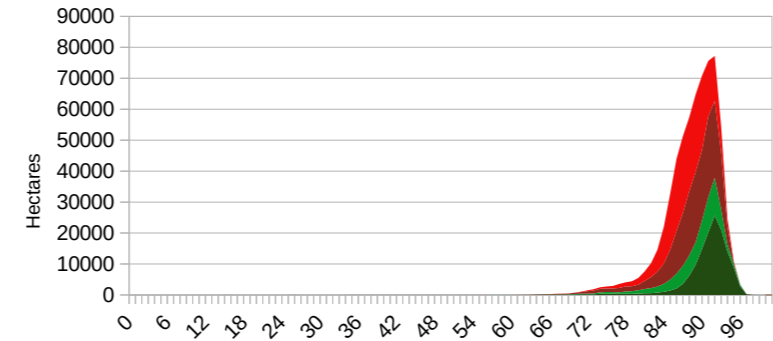
Spot-tailed Quoll - Habitat Importance Model (score) affected by 2019/20 bushfire and protected areas within 3 eastern Forest Management Areas

East Gippsland, North East, Tambo FMA's



- 256719 hectares burnt and unprotected (30%) ■ 265189 hectares burnt and protected (31%)
- 120230 hectares unburnt and unprotected (14%) ■ 200620 hectares unburnt and protected (24%)

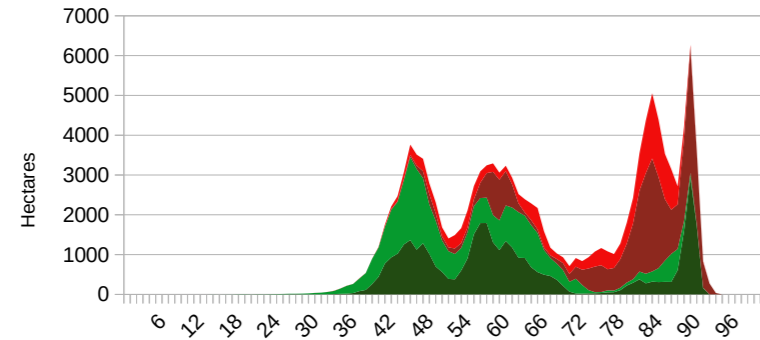
East Gippsland Forest Management Area



Habitat importance model (score) affected by fire

- 218589 hectares burnt and unprotected (33%) ■ 213497 hectares burnt and protected (33%)
- 84742 hectares unburnt and unprotected (13%) ■ 138002 hectares unburnt and protected (21%)

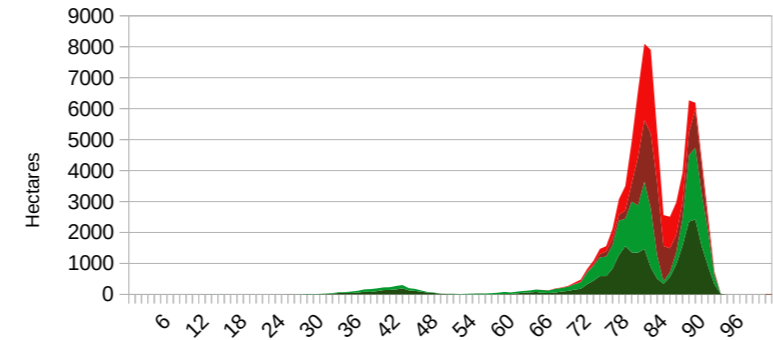
North East Forest Management Area



Habitat importance model (score) affected by fire

- 19799 hectares burnt and unprotected (15%) ■ 35455 hectares burnt and protected (28%)
- 35488 hectares unburnt and unprotected (28%) ■ 37809 hectares unburnt and protected (29%)

Tambo Forest Management Area



Habitat importance model (score) affected by fire

- 18332 hectares burnt and unprotected (22%) ■ 16237 hectares burnt and protected (19%)
- 24511 hectares unburnt and unprotected (29%) ■ 24809 hectares unburnt and protected (30%)

Area figures are hectares of the species "Habitat Importance Model" map (See: https://www.environment.vic.gov.au/data/assets/pdf_file/0036/82989/2-NaturePrint-Habitat-Models.pdf; [data.vic.gov.au](https://www.environment.vic.gov.au/data/assets/pdf_file/0036/82989/2-NaturePrint-Habitat-Models.pdf)) displayed in the FMA level graphs by "DN" score from 0 (lowest) to 100 (highest). "Burnt" represents those areas within the 2019/20 bushfire fire boundary polygon (Bushfires_Extract_BurnExtent_20200210) current to 10 Feb. 2020. Percentage figures are the proportion of area protected (PARKRES/SPZ) or unprotected (GMZ/SMZ/other) and burnt/unburnt per Forest Management Area.

Figure A- 20: Spot-tailed Quoll HIM analysis



PHOTO: LISA ROBERTS

B. Scheduled logging coupes in key refuge areas

Number of coupes/Hectares	Forest Management Area						Total		Coupes
	East Gippsland		Tambo		North-east		# coupes	hectares	
	# coupes	hectares	# coupes	hectares	# coupes	hectares			
Alpine Region			10	462	37	1759	47	2221	679-509-0001, 679-509-0002, 679-510-0001, 679-513-0001, 682-508-0001, 684-501-0010, 684-504-0005, 684-504-0006, 684-504-0008, 684-504-0009, 684-514-0006, 685-505-0001, 685-507-0001, 685-507-0004, 686-503-0001, 686-507-0019, 686-508-0013, 686-510-0002, 686-510-0004, 686-510-0012, 686-510-0021, 686-510-0023, 686-510-0024, 686-510-0026, 686-511-0002, 687-504-0001, 687-504-0002, 687-505-0001, 687-506-0004, 687-511-0006, 687-511-0007, 687-513-0002, 687-513-0003, 688-517-0001, 688-517-0002, 688-522-0001, 688-523-0001, 749-501-0017, 749-501-0018, 749-501-0023, 749-507-0003, 749-507-0005, 749-508-0001, 749-509-0001, 749-509-0004, 749-509-0006, 749-510-0003
Cabbage Tree	25	984					25	984	827-512-0006, 827-512-0007, 827-512-0008, 827-512-0009, 827-514-0017, 827-514-0018, 827-514-0019, 828-505-0003, 828-505-0004, 828-505-0005, 828-505-0006, 831-506-0021, 831-508-0010, 832-507-0010, 832-507-0015, 832-508-0019, 835-502-0002, 835-502-0007, 835-502-0009, 835-502-0010, 835-502-0011, 835-505-0001, 835-505-0008, 835-511-0002, 835-511-0003
Colquhoun	36	1292	17	597			53	1889	739-509-0005, 739-510-0014, 741-506-0006, 741-506-0007, 742-513-0010, 742-513-0011, 743-501-0009, 743-501-0010, 743-501-0011, 743-501-0012, 743-501-0013, 743-502-0007, 743-502-0008, 743-502-0009, 743-503-0002, 743-505-0002, 743-506-0001, 801-504-0012, 801-505-0008, 801-505-0012, 801-507-0004, 801-507-0009, 801-507-0011, 801-507-0013, 801-507-0017, 801-507-0019, 801-507-0020, 801-508-0007, 801-508-0008, 801-508-0009, 801-508-0010, 801-509-0011, 801-509-0012, 801-511-0005, 801-511-0006, 801-511-0007, 801-511-0009, 801-511-0010, 801-511-0011, 801-511-0012, 803-504-0009, 803-504-0021, 803-504-0027, 803-504-0028, 803-504-0030, 803-504-0031, 803-504-0035, 803-507-0006, 804-502-0026, 804-502-0027, 805-503-0010, 806-504-0011, 823-510-0005
Cottonwood	40	1228					40	1228	890-508-0001, 890-508-0019, 890-508-0020, 890-508-0021, 893-501-0003, 893-501-0008, 893-501-0010, 893-501-0011, 893-503-0018, 893-503-0019, 893-503-0020, 893-503-0021, 893-503-0022, 893-504-0002, 893-504-0008, 893-504-0009, 893-505-0003, 893-505-0004, 893-506-0009, 893-506-0010, 893-507-0012, 893-507-0013, 893-507-0014, 893-507-0015, 893-508-0011, 893-508-0012, 893-511-0003, 895-503-0003, 895-504-0005, 895-505-0011, 895-505-0012, 895-505-0013, 895-507-0018, 895-508-0002, 895-508-0003, 895-516-0004, 902-501-0010, 902-501-0011, 902-502-0001, 902-502-0006
Errinundra	59	2117					59	2117	837-501-0004, 837-501-0008, 837-501-0017, 837-512-0007, 837-513-0008, 837-513-0013, 838-507-0025, 838-507-0026, 838-507-0029, 838-508-0010, 838-508-0012, 838-508-0013, 838-508-0014, 838-508-0015, 838-508-0016, 885-503-0013, 885-506-0009, 886-502-0015, 886-502-0019, 886-505-0020, 886-505-0021, 886-505-0022, 886-507-0014, 886-507-0015, 886-507-0016, 886-509-0012, 887-509-0007, 887-509-0016, 889-506-0021, 890-501-0011, 890-501-0013, 890-501-0017, 890-503-0013, 890-508-0024, 892-502-0014, 892-504-0001, 892-507-0006, 892-507-0014, 892-507-0015, 892-507-0021, 892-507-0022, 892-507-0023, 892-507-0026, 892-508-0005, 892-509-0002, 892-509-0005, 892-510-0001, 892-511-0001, 892-511-0002, 892-512-0005, 892-514-0001, 892-514-0004, 892-514-0005, 892-514-0006, 892-514-0011, 892-515-0005, 892-515-0011, 892-517-0013, 892-517-0015,
Far East	9	363					9	363	848-502-0001, 848-502-0002, 848-502-0003, 848-506-0001, 848-506-0002, 848-506-0006, 849-506-0005, 877-507-0016, 878-502-0010
Mt Alfred			34	1339			34	1339	725-505-0002, 725-506-0007, 725-506-0008, 725-506-0010, 735-506-0009, 735-507-0002, 735-508-0008, 735-508-0009, 735-508-0010, 735-508-0012, 735-508-0014, 735-508-0015, 735-508-0017, 735-508-0018, 735-509-0005, 735-509-0017, 735-510-0015, 735-510-0025, 735-510-0026, 735-511-0004, 735-516-0007, 735-518-0008, 735-518-0009, 735-518-0010, 735-519-0019, 735-520-0009, 735-520-0010, 735-520-0013, 737-502-0004, 737-505-0001, 737-505-0002, 737-505-0003, 737-505-0004, 737-505-0006
Nunniong	56	2605	67	2378			123	4983	747-508-0004, 763-517-0001, 763-517-0002, 763-517-0006, 763-517-0007, 763-517-0009, 764-504-0008, 764-507-0003, 765-501-0008, 765-501-0009, 765-501-0011, 765-501-0012, 765-501-0014, 765-501-0015, 765-501-0016, 765-502-0001, 765-502-0102, 765-502-0105, 765-502-0112, 765-502-0114, 765-502-0115, 765-502-0118, 765-503-0005, 765-503-0008, 765-504-0004, 765-506-0004, 765-506-0009, 765-506-0014, 765-508-0001, 765-509-0002, 765-509-0003, 765-510-0003, 765-510-0009, 765-510-0011, 765-510-0014, 765-510-0016, 765-510-0017, 765-522-0002, 765-522-0005, 765-529-0014, 766-502-0004, 766-503-0011, 766-503-0014, 766-503-0024, 766-503-0027, 766-503-0032, 766-508-0001, 766-508-0002, 767-501-0001, 767-503-0008, 767-503-0011, 767-504-0015, 767-504-0016, 767-505-0002, 767-509-0006, 767-509-0008, 779-501-0007, 779-501-0008, 779-501-0009, 779-501-0012, 779-501-0013, 779-501-0017, 779-501-0018, 779-501-0019, 779-501-0022, 779-501-0023, 779-502-0028, 809-501-0003, 811-501-0006, 811-503-0002, 811-503-0005, 811-503-0006, 811-506-0003, 811-506-0004, 812-504-0023, 812-504-0025, 812-504-0026, 812-505-0006, 812-505-0007, 812-505-0008, 812-506-0019, 814-505-0003, 814-507-0004, 814-509-0009, 814-510-0006, 814-510-0008, 814-510-0009, 814-511-0017, 815-506-0003, 815-511-0001, 815-511-0002, 815-514-0002, 815-515-0003, 815-515-0007, 816-507-0015, 816-507-0017, 816-507-0018, 816-509-0003, 816-509-0005, 816-509-0007, 816-509-0008, 816-509-0019, 816-509-0020, 817-501-0002, 817-501-0003, 817-501-0004, 817-501-0005, 817-501-0015, 817-502-0001, 817-502-0004, 817-502-0011, 817-502-0013, 817-502-0015, 817-504-0002, 817-504-0003, 817-504-0004, 817-504-0005, 817-504-0006, 817-505-0001, 817-505-0002, 817-505-0003, 817-505-0006, 817-511-0011
Sardine Creek to Bemm	96	3779					96	3779	829-507-0013, 829-509-0024, 829-510-0021, 829-511-0020, 829-517-0004, 829-517-0005, 831-501-0015, 831-502-0009, 832-501-0003, 832-501-0015, 832-501-0024, 832-501-0028, 832-501-0039, 832-502-0010, 832-502-0023, 832-503-0001, 832-503-0016, 832-505-0015, 832-508-0020, 833-507-0009, 833-507-0010, 833-516-0004, 834-504-0011, 834-504-0014, 834-506-0008, 834-507-0007, 834-507-0008, 834-507-0009, 834-507-0010, 834-507-0011, 838-505-0011, 838-505-0016, 842-503-0007, 842-504-0004, 842-504-0013, 842-504-0021, 842-504-0023, 842-504-0026, 842-504-0030, 842-507-0015, 842-508-0022, 842-509-0024, 842-509-0025, 842-509-0026, 842-509-0032, 842-519-0020, 842-519-0021, 842-519-0022, 842-520-0015, 842-520-0017, 842-520-0028, 842-520-0035, 843-505-0002, 843-507-0007, 864-501-0005, 864-504-0012, 864-507-0006, 865-508-0004, 865-508-0007, 866-501-0004, 866-505-0013, 866-508-0016, 866-508-0018, 866-508-0023, 866-508-0024, 866-508-0026, 866-508-0032, 866-508-0033, 866-508-0034, 866-511-0001, 866-511-0013, 866-512-0019, 867-503-0007, 868-504-0001, 868-504-0002, 868-504-0011, 871-507-0015, 872-509-0012, 872-509-0018, 872-509-0020, 872-511-0012, 883-503-0005, 883-503-0013, 883-504-0001, 883-504-0014, 883-504-0015, 883-505-0011, 883-505-0017, 883-506-0001, 884-513-0001, 884-513-0019, 884-514-0003, 884-517-0001, 884-517-0012, 885-515-0009
Swift's Creek (west)			67	2238			67	2238	722-504-0001, 722-504-0007, 722-504-0008, 722-504-0010, 722-505-0010, 722-505-0011, 722-506-0018, 726-501-0009, 726-501-0010, 726-502-0018, 759-503-0002, 759-503-0003, 760-502-0018, 760-503-0002, 760-503-0003, 760-503-0004, 760-503-0008, 760-503-0009, 760-503-0018, 760-504-0018, 760-504-0021, 760-504-0023, 770-507-0002, 770-507-0003, 770-507-0004, 770-507-0005, 770-507-0011, 770-507-0013, 770-507-0016, 770-507-0018, 770-510-0007, 770-510-0012, 770-510-0013, 770-510-0014, 770-510-0017, 770-510-0018, 771-507-0022, 771-507-0026, 771-507-0028, 771-507-0029, 772-505-0003, 773-502-0009, 773-504-0004, 773-504-0005, 774-501-0005, 774-502-0015, 774-504-0001, 774-504-0003, 774-504-0008, 774-504-0010, 774-504-0012, 775-501-0001, 775-501-0002, 775-503-0002, 775-504-0010, 775-504-0013, 775-504-0014, 775-504-0015, 775-505-0001, 775-505-0006, 775-506-0001, 775-506-0007, 775-506-0009, 776-502-0007, 776-504-0015, 776-504-0018, 776-504-0023
Total:	321	12368	195	7014	37	1759	553	21141	

Table B- 1: Scheduled logging coupes in key refuge areas

This table summarises the number of coupes and hectares within the key identified refuge areas that are either unburnt/outside the fire extent or have significant areas with only low severity fire within them. This is not an exhaustive list.

