

**Evidence of Deer in Nillumbik Shire Council and surrounds**  
Public Hearing, Senate Environment and Communications References  
Committee - Inquiry into the impact of feral deer, pigs and goats

Andrew White – Plenty Gorge Park, 10 August 2018 (Fallow Deer)

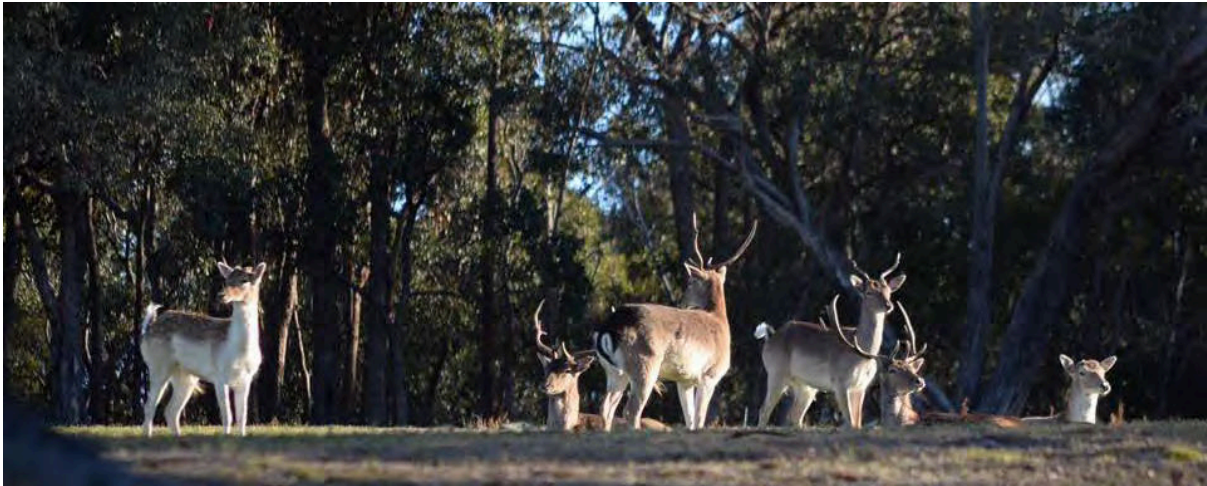


Andrew White – Plenty Gorge Park, 12 October 2018 (Fallow Deer)





Photographic Evidence of Deer in Nillumbik Shire Council  
Michelle Hanslow



Rohan Clarke, 23 May 2018 - Glynn's Reserve, Warrandyte



Pretty Hill Reserve, Kangaroo Ground - 31 October 2018



COMMENTARY FROM ROHAN CLARKE 19 November 2018

Have been a resident in Eltham North for 10 years. Initially I didn't see any deer locally, though I am sure there must have been some present, until 5 years ago but now I see Sambar regularly and they now seem common in most of the bushland blocks I'm familiar with. Indeed they seem so common now that I could easily show others sign very quickly and with a day I reckon I show people actual deer.

I mostly see them when walking, though have seen a few whilst driving. To date all have been Sambar (ie have never seen any evidence of Fallow or Red Deer in the shire) though with Fallow in a few nearby areas it is possible they are here too.

Off the top of my head I've had live Sambar in the last 24 months at the following sites in Nillumbik:

Glynns Reserve (Warrandyte State Park/Parks Victoria land)

- Pretty Hill Reserve, Christmas Hills (photos of live animals). At least 4 different animals in past 6 months.
- Warrandyte - Kinglake Conservation Reserve. Multiple animals grazing at night towards the start of the Happy Valley Track (first km from Eltham Yarra Glen rd), single at western end of Roberts Road, single at Buttermans track end of Roberts Rd.
- Allendale Rd where it crossed the branch to Orme Gully Creek.
- Allendale Rd where old Donaldson Rd branches off.

Other definite sign includes

- Private Heritage Golf Course on north side of the yarra (tracks, fresh scats)

Photographic Evidence of Deer in Nillumbik Shire Council  
Michelle Hanslow

- Glynn's Reserve - wallow
- Yerring Gorge Bushland reserve (tracks)
- Running Creek Reservoir (accessed from running creek track). Lots of tracks, browsing, tree damage and wallows)  
Running Creek Road at 37°32'30.3"S 145°12'20.4"E (tracks)
- Fitzsimmons Lane (roadkill yearling male).
- Southern end of Eltham Lower Park where it abuts the Yarra (tracks)

My interpretation is that they are very common on the Yarra River easement, any of the forested areas linking Kinglake National Park, Warrandyte-Kinglake conservation park and other forested including remarkably narrow vegetated gullies in Christmas hills area and uncommon but regularly along the Diamond Creek. Surprisingly I haven't seen any sign that I can recall in Plenty Gorge. My expectation is that they will become more common in vegetated areas along Diamond Creek in the next year or two and at some point (if they aren't already there) get into the top of Plenty Gorge and colonise that area.

Damage is pretty obvious where they are established. Especially so where the woodlands are drier woodlands that are already short on native poa etc where Kangaroo numbers are also high.

Not sure there is a silver bullet but shooting in some of these reserves would still be possible especially if done with use of thermal scanners and spotlights at night with informed neighbours. A structure where shooting onto neighbouring private property where landholders give consent would also be ideal as at places like Pretty Hill block sizes are relatively small and perhaps half the sightings I have there are on the 'other side' of the drainage line meaning they are on private land but visible from public reserve.

Tony Fitzgerald, Parks Victoria - Ranger, Environment, Land and Water

"These photos are all from cameras situated in the Wallaby Creek catchment section of Kinglake National Park.

This is part of Melbourne's water supply.

It is for this reason Melbourne Water have been supporting us. From a parks perspective, there have been identified some really rare species and Ecological vegetation class, that require protecting from the browsing and wallowing of the Sambar deer.

I think the image of myself standing in a deer wallow right next to the Plenty river, says it all.

We have had a deer program with the Australian Deer Association volunteers - we have been out 6 times and taken out 6 deer - it is slow going, but making a start."



Photographic Evidence of Deer in Nillumbik Shire Council  
Michelle Hanslow





Photographic Evidence of Deer in Nillumbik Shire Council  
Michelle Hanslow

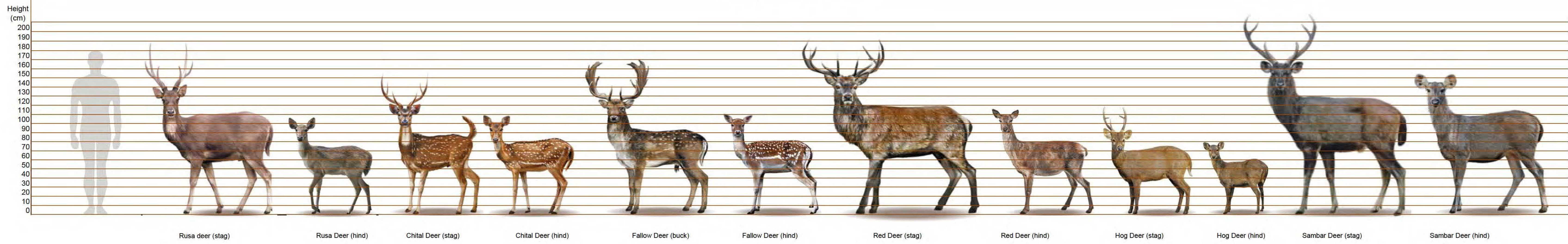








## Deer in Australia



Rusa deer (stag)

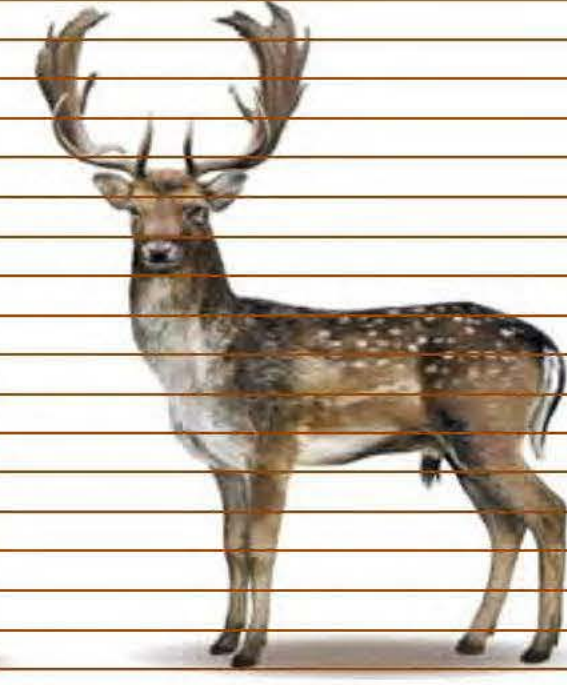
They are a medium to large-sized deer. A mature stag will stand up to 110cm at the shoulder and weigh around 135kg. The hind is about two-thirds the size of the stag.

Rusa Deer (hind)

Chital Deer (stag)

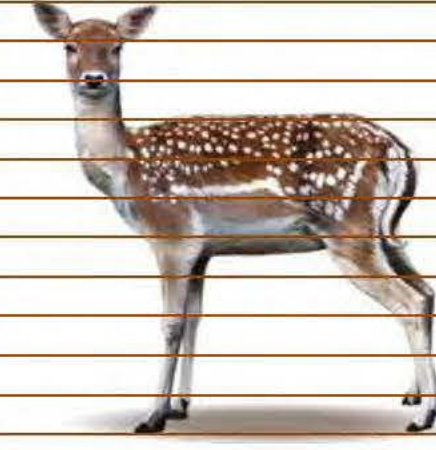
They are a medium size deer. A mature stag will stand up to about 90cm at the shoulder and weigh about 85kg. The hind will stand up to about 80cm, weighing up to about 60kg. The antlers are typically three points on each side (six tined) and are thin and slender growing up to about 35 inches.

Chital Deer (hind)

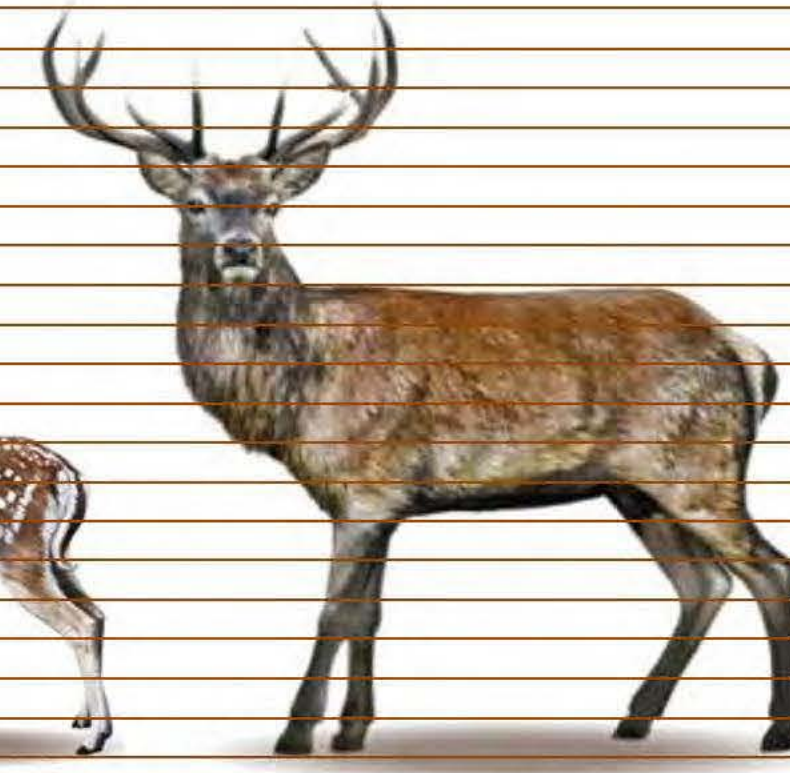


Fallow Deer (buck)

The Fallow is a very pretty deer of medium size. A mature buck will stand up to about 95 cm at the shoulder and weigh up to about 90kg. The hinds will be half the size of a stag standing up to 80cm and weighing in at about 40kg.

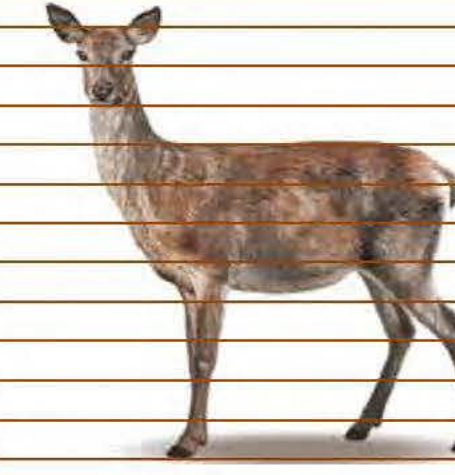


Fallow Deer (hind)

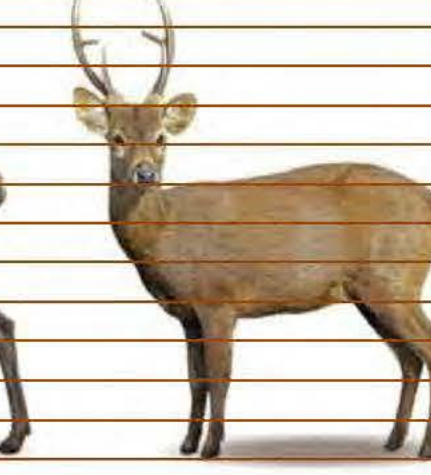


Red Deer (stag)

They are a medium to large-sized deer. Mature stags will stand around 120cm at the shoulder and weigh approximately 160kg. Hinds are approximately two-thirds the size of the male.

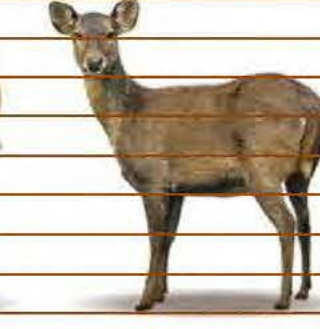


Red Deer (hind)

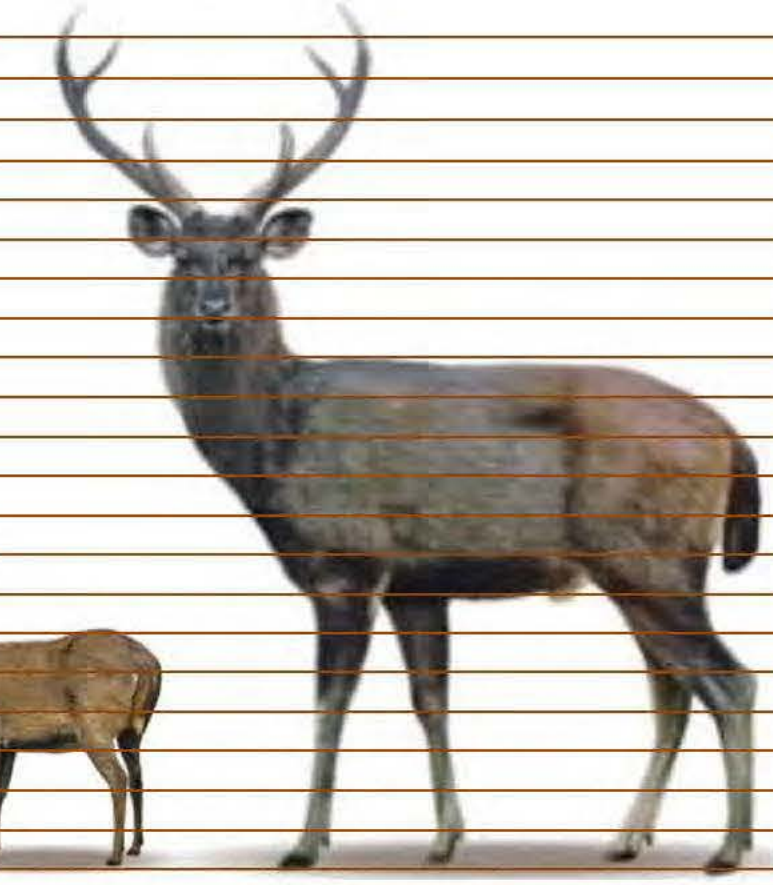


Hog Deer (stag)

Hog Deer have a brownish/straw colour coat and may have white spots in the summer. The underside is white/cream. The Hog Deer is the smallest deer species in Australia. A mature stag stands around 70cm at the shoulder and weighs about 50kg. The hind is somewhat smaller, weighing only 30kg. The antlers typically have three points on each side (six-tined), are thin and may grow to around 16 inches.

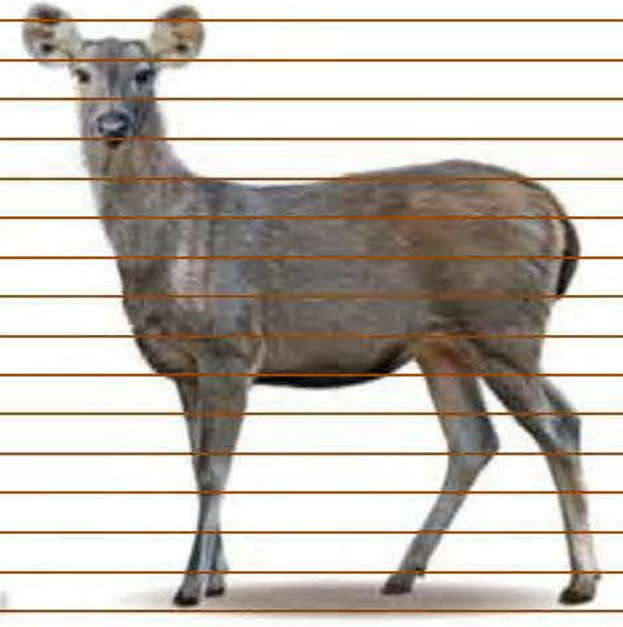


Hog Deer (hind)



Sambar Deer (stag)

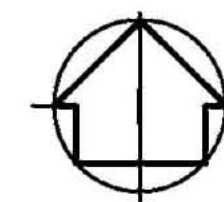
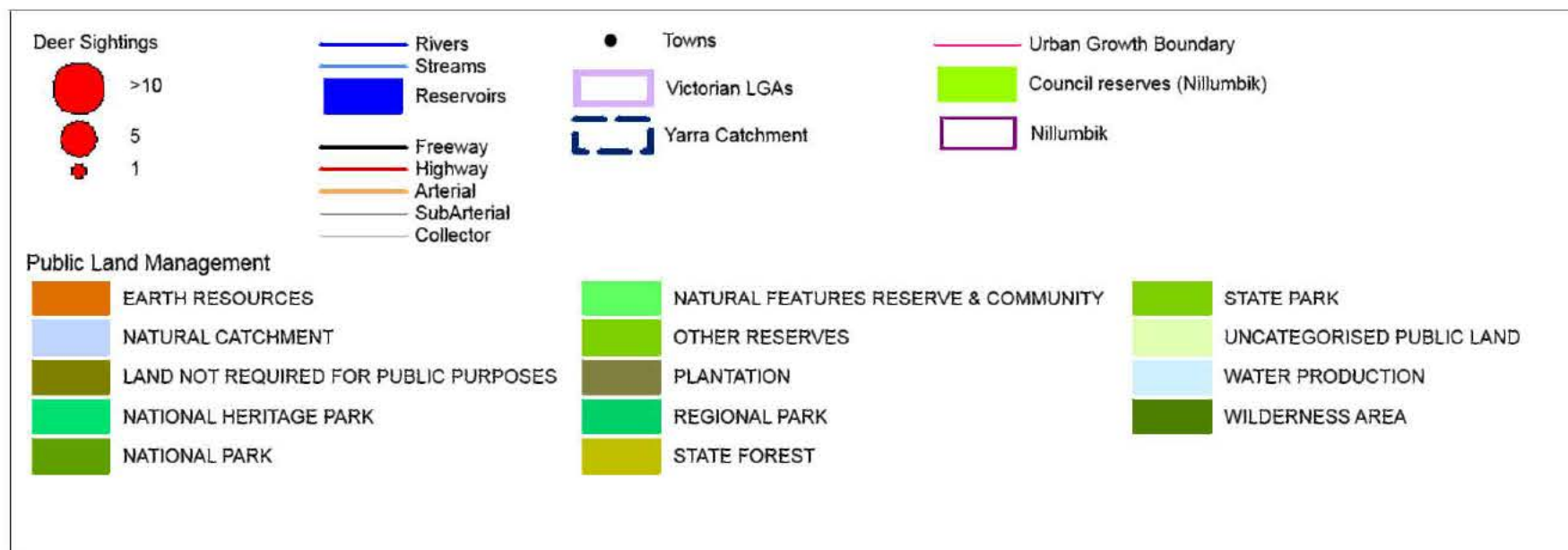
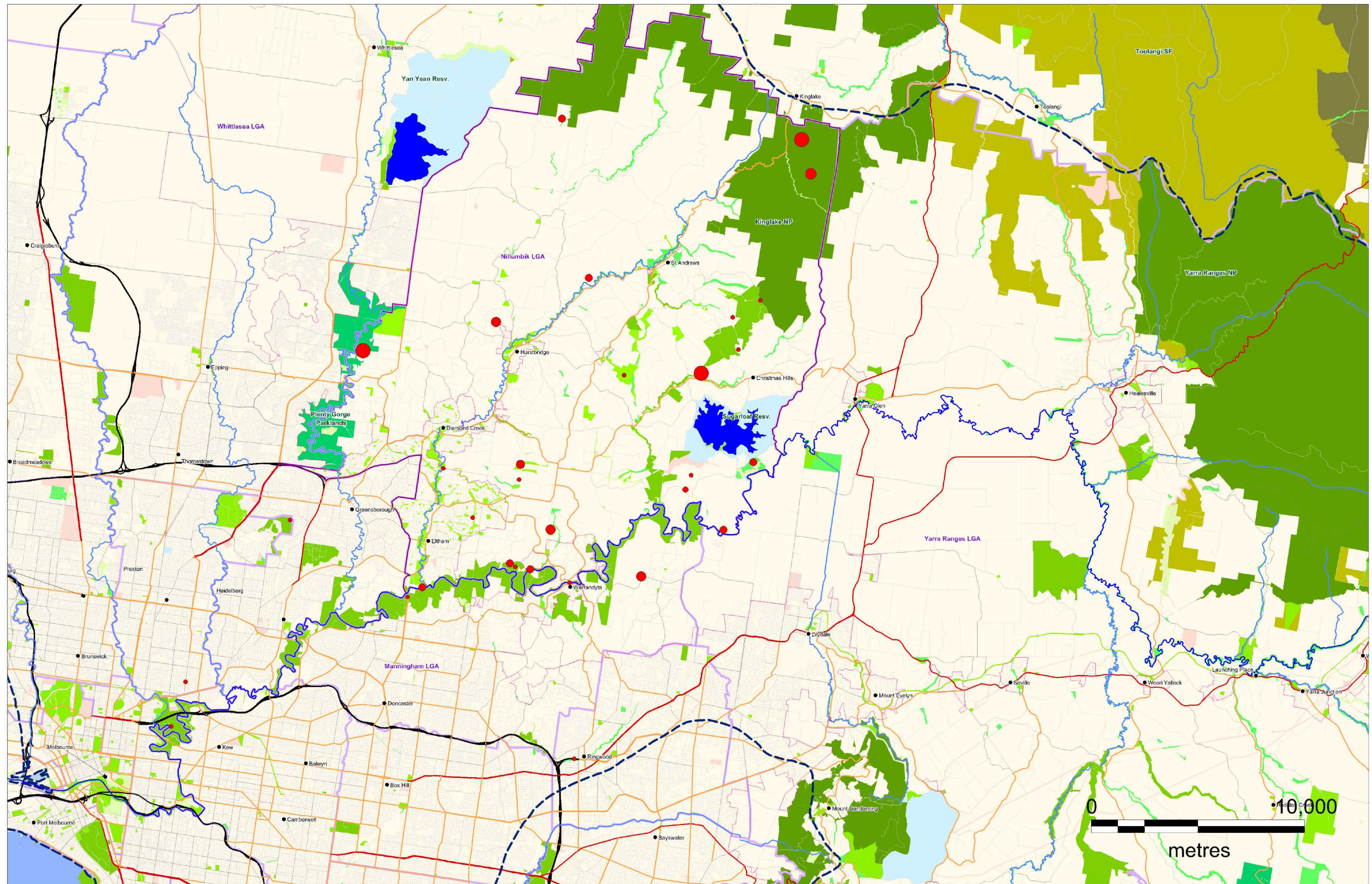
Sambar Deer are a very large deer. A mature stag can stand 130cm at the shoulder and weigh up to 230kg. The hinds are smaller in size and stand up to 110cm and weigh up to 180kg.



Sambar Deer (hind)

NB - Info from GMA website





Prepared by: M Hanslow  
Date: 19 November 2018  
Datum: GDA 94 Zone 55

Nillumbik Shire Council has taken care to ensure the accuracy of this publication but does not accept responsibility for any errors or omissions.  
This publication is copyright. No part may be reproduced by any process except in accordance with the provisions of the Copyright Act.



## Known Deer Reports in Nillumbik