



TRACK
Setting the Record Straight.

120-012

서울시 서대문구 충정로 2 가 99-3
동신빌딩 5 층 푸른아시아
진실과 화해를 위한 해외 입양인 모임
사단 법인 시민정보미디어센터(내)

TRACK
c/o Green Asia Network (Citizens Media and Info)
Dongsin BD 99-3 Chungjeongro 2 ga
Seodaemungu, Seoul
South Korea 120-012
truthreconcile@gmail.com | 82-10-2614-0294

March 26, 2011

Department of the State
P.O. Box 6100
Parliament House
Canberra, ACT 1600
Australia

Re: Support of Origins, Inc. for the Commonwealth of Australia's Inquiry into Forced Adoption Policies and Practices

Dear Senators:

Thank you for granting a Senate inquiry into Australia's forced adoptions as requested by Origins, Inc. As this Senate inquiry has the potential to set a precedent for the human rights of unwed mothers and their families around the world, TRACK fully supports the mothers' demands for an official record of Australia's forced adoption history.

Led by internationally adopted Koreans, TRACK (Truth and Reconciliation for the Adoption Community of Korea) is aware of the parallels between the abusive and coercive adoption practices reported by the Australian mothers and the practices reported by mothers here in South Korea that have been imported from Western countries.

Most notably, these practices include: coercively counseling mothers to relinquish their children for adoption instead of informing mothers of alternatives to adoption or the impact of adoption; gaining consent for adoption before the child's birth; using incomplete paperwork to proceed with the adoption process; performing unnecessarily speedy adoptions; and marketing newborn children to potential adopters.

Among the official South Korean bodies that are well aware of past adoption abuses and/or current practices targeting unwed mothers' children for adoption include the Korean Women's Development Institute, a government think tank; the Welfare and Labor Complaints Division of the Anti-Corruption and Civil Rights Commission; the national government's Ministry of Gender Equality & Family; and the South Korean parliament's Women's and Family Committee.

We hope for an outcome that rectifies Australia's past abuses, sending a strong message to the international community that your country is taking the lead on safeguarding human rights. In addition, your inquiry sets a strong example for South Korea, where 38.8% of babies born to unwed mothers in 2007 simply fell off the statistical charts – they went unaccounted for after birth and are presumed to have been adopted through private arrangements, often orchestrated by health care providers, that lie outside the law. Therefore, along with our allies in the adoption community, TRACK will continue to monitor the Senate inquiry with much optimism as we stand in solidarity with the mothers of Origins.

With warmest wishes from

The board, staff and members of TRACK
(Truth and Reconciliation for the Adoption Community of Korea)

Attachment: Statistics table from *Reviewing Issues on Unwed Mothers' Welfare in Korea: Intercountry Adoption, Related Statistics, and Welfare Policies in Developed Countries*, published May 2009 by Korean Unwed Mothers Support Network and Korean Women's Development Institute. In addition, we are happy to provide you with any personal introductions or written information you would like to substantiate our above claims if you would find it helpful to your inquiry.

진실과 화해를 위한 해외 입양인 모임

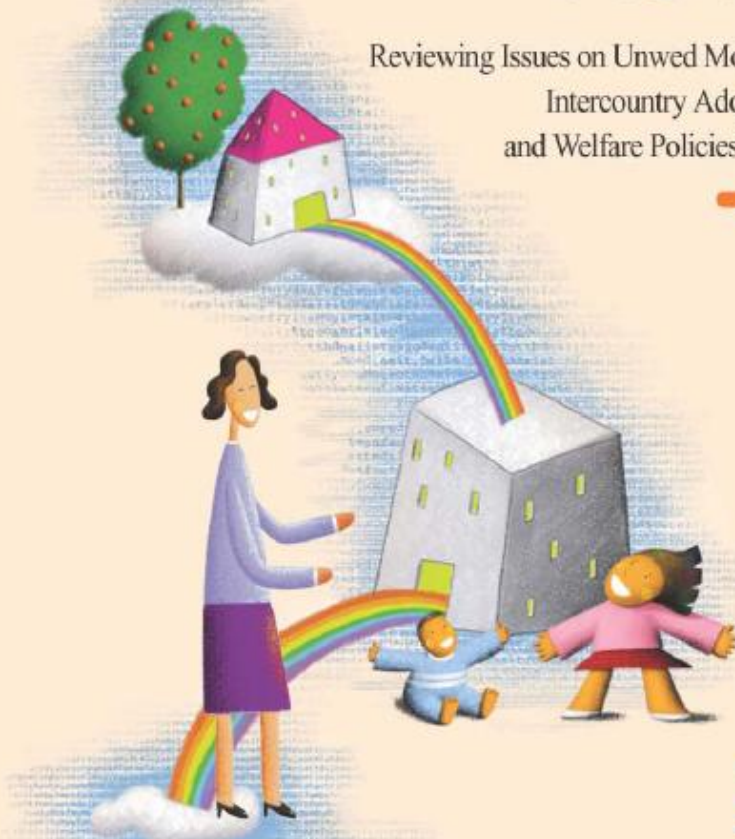
Truth and Reconciliation for the Adoption Community of Korea

Reviewing Issues on Unwed Mothers' Welfare in Korea: Intercountry Adoption, Related Statistics, and Welfare Policies in Developed Countries – statistics

한국의 미혼모 복지에 관한 연구 : 해외입양, 관련통계, 선진국의 복지정책을 중심으로

Reviewing Issues on Unwed Mothers' Welfare in Korea:
Intercountry Adoption, Related Statistics,
and Welfare Policies in Developed Countries

2009. 5



KUMSN
한국미혼모지원네트워크

 한국여성정책연구원
Korean Women's Development Institute

<Table 1> Number of Births by Mother's Marital Status

(Unit: Person, %)

Year	Total	In Marriage	Out of Wedlock	Unknown	Non-Marital Birth Rate
1989	639,431	634,270	5,161	0	0.8
1990	649,738	643,585	6,151	2	0.9
1991	709,275	702,014	7,259	2	1.0
1992	730,678	722,374	8,304	0	1.1
1993	715,826	707,021	8,799	6	1.2
1994	721,185	711,904	9,272	9	1.3
1995	715,020	706,247	8,748	25	1.2
1996	691,226	684,890	6,290	46	0.9
1997	668,344	664,148	4,196	0	0.6
1998	634,790	630,362	4,428	0	0.7
1999	614,233	608,155	4,716	1,362	0.8
2000	634,501	627,336	5,540	1,625	0.9
2001	554,895	547,779	5,330	1,786	1.0
2002	492,111	483,152	5,184	3,775	1.1
2003	490,543	480,110	6,082	4,351	1.2
2004	472,761	463,245	6,116	3,400	1.3
2005	435,031	425,653	6,459	2,919	1.5
2006	448,153	438,735	6,805	2,613	1.5
2007	493,189	483,275	7,774	2,140	1.6

Sources : Korean National Statistical Office. 2008. *Vital Statistics*.

Note : Unknown includes infant dead and the abandoned. The sharp increase of unknown from 1999 is possible through efforts to investigate the number of the infant dead through additional survey. In Korea, birth is legally identified through report to administrative office by parents or relatives. The infant dead with fatal disease from birth is less likely to be reported.

<Table 2> Destination of Out-of-Wedlock Births: Adopted, With Mothers, and Unidentified

(Unit: Person)

	1991	1992	1993	1994	1995	1996
ⒶOut-of-Wedlock Births	7,259	8,304	8,799	9,272	8,748	6,290
ⒷAdopted	2,758	2,717	2,980	2,913	2,699	2,822
ⒸWith Mother	472	548	590	630	604	440
ⒹUnidentified	4,029	5,039	5,229	5,729	5,445	3,028
	1997	1998	1999	2000	2001	2002
ⒶOut-of-Wedlock Births	4,196	4,428	4,716	5,540	5,330	5,184
ⒷAdopted	3,082	3,338	3,622	3,706	3,862	3,708
ⒸWith Mother	298	319	391	476	586	839
ⒹUnidentified	816	771	703	1,358	882	637
	2003	2004	2005	2006	2007	-
ⒶOut-of-Wedlock Births	6,082	6,116	6,459	6,805	7,774	-
ⒷAdopted	3,464	3,507	3,164	2,901	2,296	-
ⒸWith Mother	1,299	1,622	2,048	2,157	2,464	-
ⒹUnidentified	1,319	987	1,247	1,747	3,014	-

Sources : Ⓑ Ministry of Health, Welfare, and Family 2008. Total Number of Adopted Children within and outside Korea

Ⓒ Estimated Number of Children raised by their own Mothers

Ⓓ Unidentified Children = Ⓐ-(Ⓑ+Ⓒ)

Note : Ⓒ is estimated based on previous survey results. The percentage of unwed mothers wishing to keep their children is 5.8%, 7.2%, 8.3%, 8.6%, 11%, and 31.7% each for 1984, 1998, 1999, 2000, 2001, 2005.

<Table 3> Estimated Number of Unwed Mothers Raising their Own Children by Children's Age in 2009

(Unit: Person, %)

Age of Children	Number	Percentage
Age 0 ~ Age 2 and below	2,464	15.6
Age 0 ~ Age 3 and below	4,621	29.3
Age 0 ~ Age 5 and below	8,291	52.5
Age 0 ~ Age 7 and below	10,429	66.1
Age 0 ~ Age 13 and below	12,939	82.0
Age 0 ~ Age 15 and below	14,173	89.8
Age 0 ~ Age 18 and below	15,783	100.0

Note : Since the number of out-of-wedlock births after January 1, 2008 is not available at the moment, they could not be counted when we estimate the number of unwed mothers raising their children. The total number of the mothers is estimated to be about 19,500 when we consider the number of out-of-wedlock births from January 1, 2008 to mid 2009.

<Table 4> Expected Location of Unidentified Children of Unwed Mothers by Year
(Unit: Person)

	1991	1992	1993	1994	1995	1996
Ⓓ Unidentified	4,029	5,039	5,229	5,729	5,445	3,028
Domestic Adoption Reported in Court	2,568	3,061	4,227	2,791	2,043	2,010
Foster Care	999	1,212	943	927	505	727
Institutional Care	3,414	3,122	2,940	2,953	2,819	3,161
	1997	1998	1999	2000	2001	2002
Ⓓ Unidentified	816	771	703	1,358	882	637
Domestic Adoption Reported in Court	2,248	2,572	2,713	2,777	2,864	2,423
Foster Care	1,209	2,353	1,249	1,406	3,090	2,177
Institutional Care	3,917	5,112	4,683	4,453	6,274	4,663
	2003	2004	2005	2006	2007	-
Ⓓ Unidentified	1,319	987	1,247	1,747	3,014	-
Domestic Adoption Reported in Court	2,198	2,562	3,154	3,890	3,853	-
Foster Care	2,392	2,212	2,322	3,101	247	-
Institutional Care	4,824	4,782	4,818	4,366	3,245	-

Source : Domestic Adoption Reported in Court : Office of Court Administration. 2008.
Justice Yearly Book Foster Care and Institutional Care : Ministry of Health,
Welfare, and Family. 2008. Statistics on Children under Protection.

Note : Only 2.5% to 3.8% of domestic adoption cases in statistics of MOHWF are reported in Court records. 96.2% to 97.5% of them take the form of secret adoption in which the children are reported in Court as biological children.