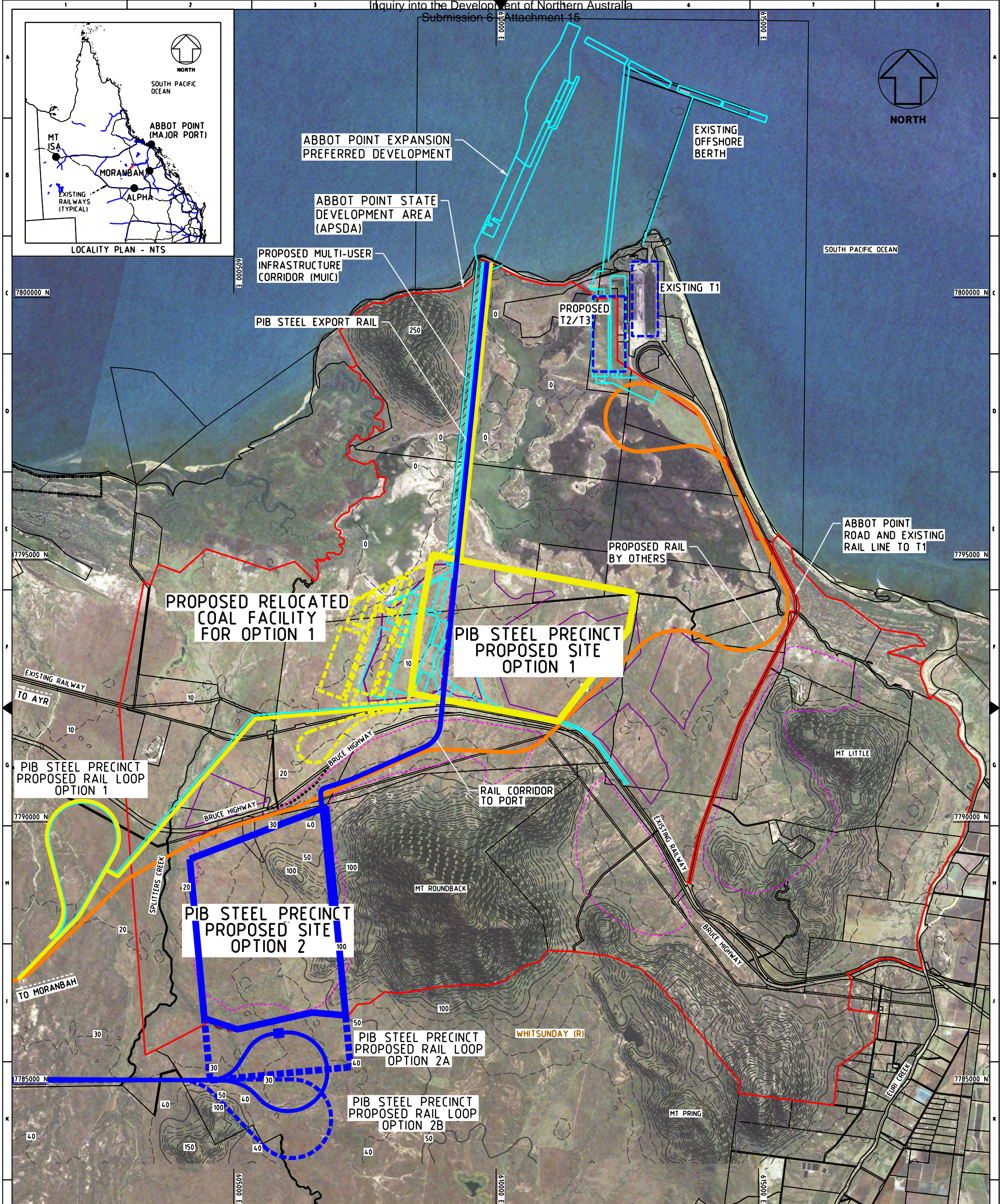


Appendix 15





LEGEND:

PIB OPTION 1 CONCEPT

PIB OPTION 2 CONCEPT

ABBOT POINT PROPOSED EXPANSION

PROPOSED ALT ABBOT POINT EXPANSION

BASED ON OR CONTAINS DATA PROVIDED BY THE STATE OF
OLD IERMI (2010), IN CONSIDERATION OF THE STATE
PERMITTING USE OF THIS DATA YOU ACKNOWLEDGE AND
AGREE THAT THE STATE GIVES NO WARRANTY IN RELATION
TO THE DATA (INCLUDING ACCURACY, RELIABILITY, COMPLETE-
NESS, CURRENCY OR SUITABILITY) AND ACCEPTS NO LIABILITY
(INCLUDING WITHOUT LIMITATION, LIABILITY IN NEGLIGENCE)
FOR ANY LOSS, DAMAGE OR COSTS (INCLUDING CONSEQUENTIAL
DAMAGE) RELATING TO ANY USE OF THE DATA. DATA MUST
NOT BE USED FOR MARKETING OR BE USED IN BREACH OF
THE PRIVACY LAWS.

NOTE:
ABBOT POINT STATE DEVELOPMENT AREA (APSDA)
ABBOT POINT EXPANSION AP-X PROJECT
DRAWING NUMBER 227194-G-1094

1000 0 1000 2000 3000 m

SCALE 1 : 100000



This drawing and all the information contained on it
remains the property of Engenium Pty Ltd. It is
confidential and is issued on the condition that, except
with written permission from Engenium Pty Ltd, it must
not be copied, reproduced viewed or communicated to
any other party, nor shall it be used for any purpose
other than that stated on the particular contract,
order, enquiry with which it is issued. Any such
authorised disclosure is subject to the party agreeing
to be bound by these confidentiality obligations. Any
copies or extracts of this information must contain
this clause and must be returned upon request
by Engenium Pty Ltd.

REV	DATE	DRN	DESCRIPTION	(CHKD)	APPR	PROJ
A	14.02.13	BC	ISSUED FOR INFORMATION			
DRAWING REVISION						

DRAWN BY	DATE	NAME
CHECKED BY		
APPROVED BY		
ENG MGR		
SCALE 1:100000		
FORMAT SIZE A4		

engenium		ENGENIUM PTY LTD Level 8, 110 St Georges Tce Perth WA 6000 Australia ABN 52 105 152 994 Tel: +61 8 6465 7777 Fax: +61 8 6465 7799
EAST WEST LINE PARKS LIMITED		
PROJECT IRON BOOMERANG		
GENERAL ARRANGEMENT - ABBOT POINT		
STEEL PARK LOCALITY CONCEPT PLAN		
DRAWING No.	PIB-SKE-G-0042 - FIGURE 1	REV. A