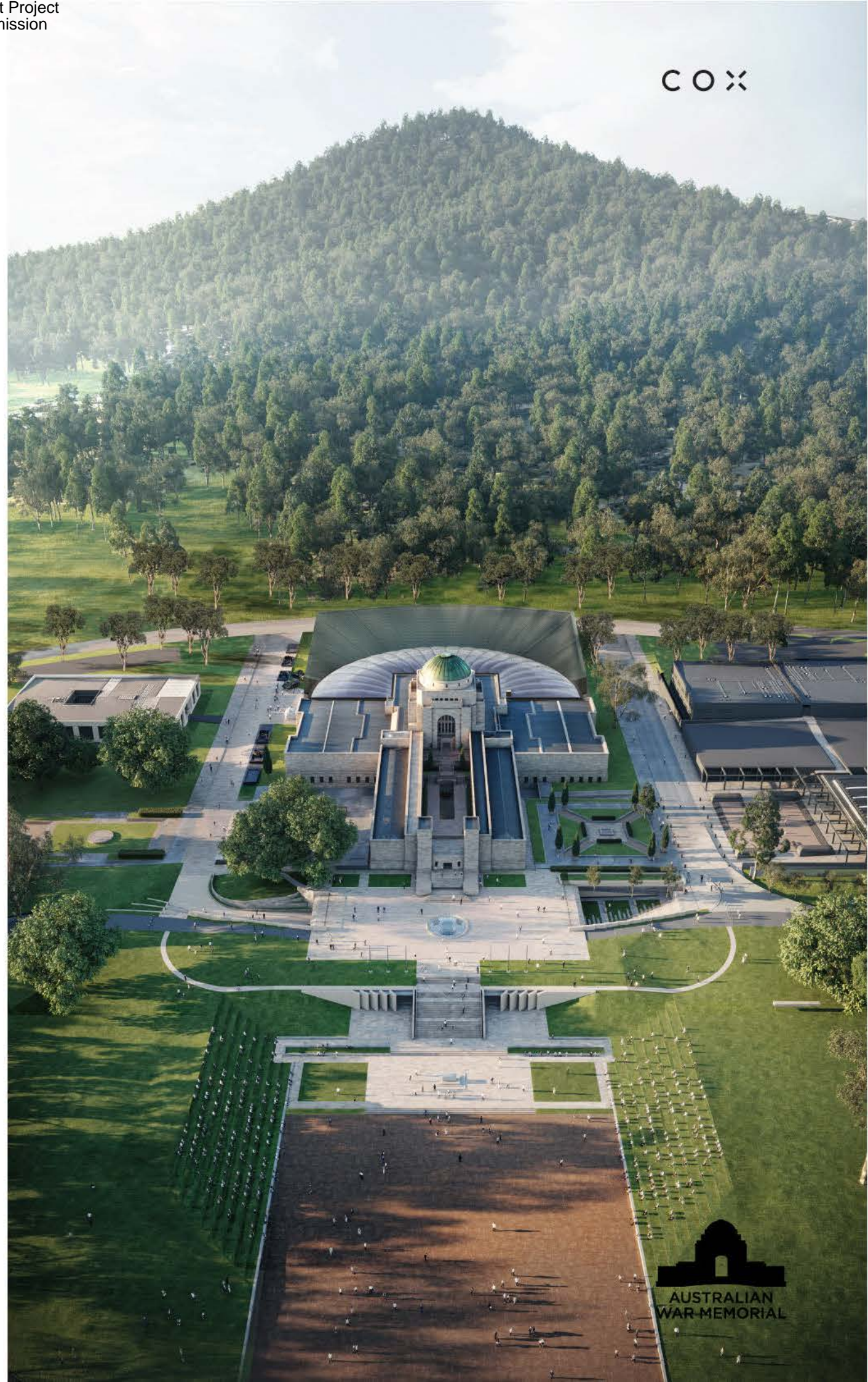


## **ATTACHMENT A – Overall Site**

Perspective 1 – View of Overall Development from Anzac Parade

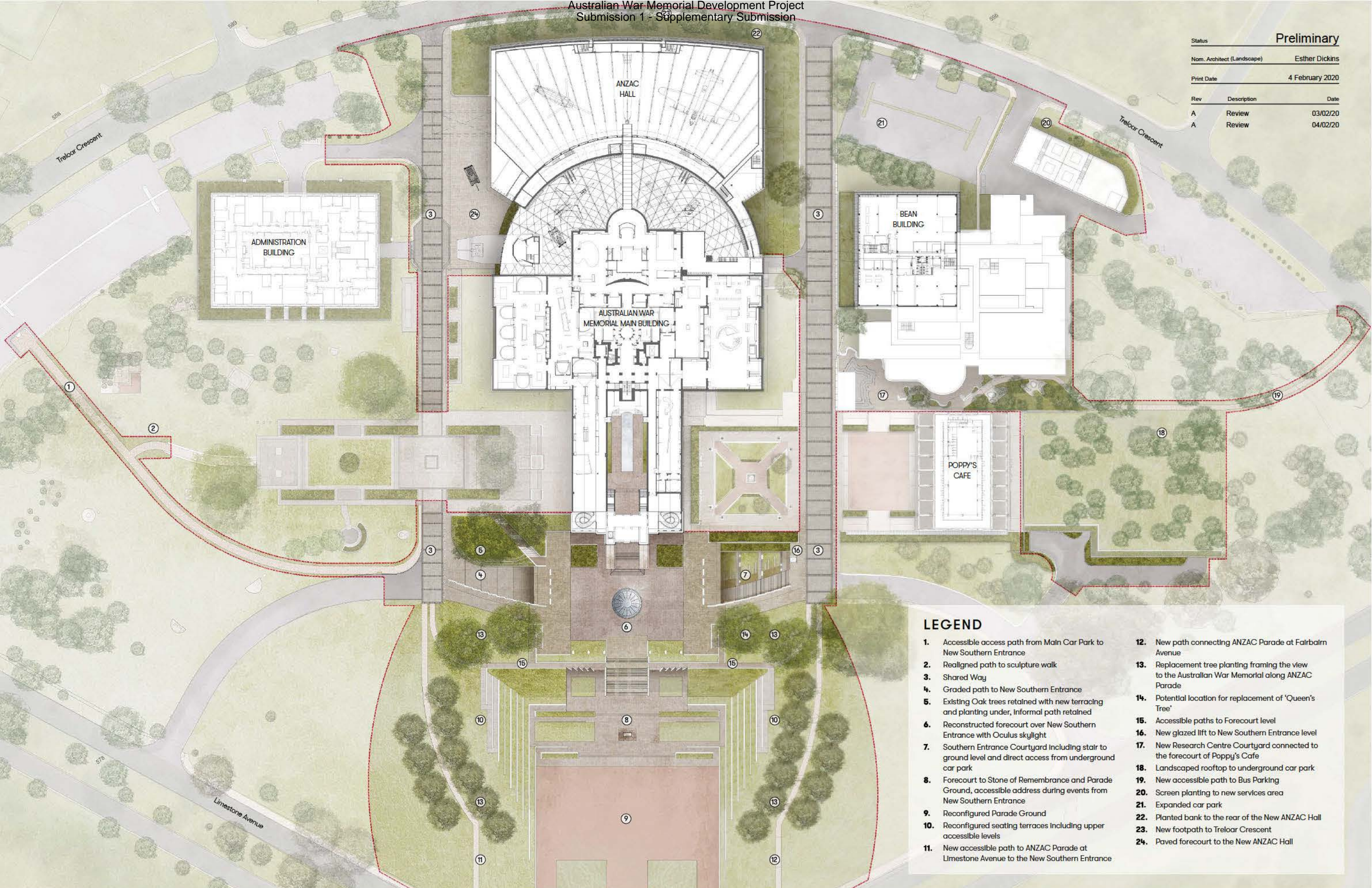
Drawing SK005(A) – Public Realm Plan

1 - View of Overall Development from Anzac Parade





Status	Preliminary	
Nom. Architect (Landscape)	Esther Dickins	
Print Date	4 February 2020	
Rev	Description	Date
A	Review	03/02/20
A	Review	04/02/20



**LEGEND**

- |   |   |
|---|---|
| <ul style="list-style-type: none"> <li>1. Accessible access path from Main Car Park to New Southern Entrance</li> <li>2. Realigned path to sculpture walk</li> <li>3. Shared Way</li> <li>4. Graded path to New Southern Entrance</li> <li>5. Existing Oak trees retained with new terracing and planting under, Informal path retained</li> <li>6. Reconstructed forecourt over New Southern Entrance with Oculus skylight</li> <li>7. Southern Entrance Courtyard including stair to ground level and direct access from underground car park</li> <li>8. Forecourt to Stone of Remembrance and Parade Ground, accessible address during events from New Southern Entrance</li> <li>9. Reconfigured Parade Ground</li> <li>10. Reconfigured seating terraces including upper accessible levels</li> <li>11. New accessible path to ANZAC Parade at Limestone Avenue to the New Southern Entrance</li> </ul> | <ul style="list-style-type: none"> <li>12. New path connecting ANZAC Parade at Fairbairn Avenue</li> <li>13. Replacement tree planting framing the view to the Australian War Memorial along ANZAC Parade</li> <li>14. Potential location for replacement of 'Queen's Tree'</li> <li>15. Accessible paths to Forecourt level</li> <li>16. New glazed lift to New Southern Entrance level</li> <li>17. New Research Centre Courtyard connected to the forecourt of Poppy's Cafe</li> <li>18. Landscaped rooftop to underground car park</li> <li>19. New accessible path to Bus Parking</li> <li>20. Screen planting to new services area</li> <li>21. Expanded car park</li> <li>22. Planted bank to the rear of the New ANZAC Hall</li> <li>23. New footpath to Treloar Crescent</li> <li>24. Paved forecourt to the New ANZAC Hall</li> </ul> |
|---|---|

