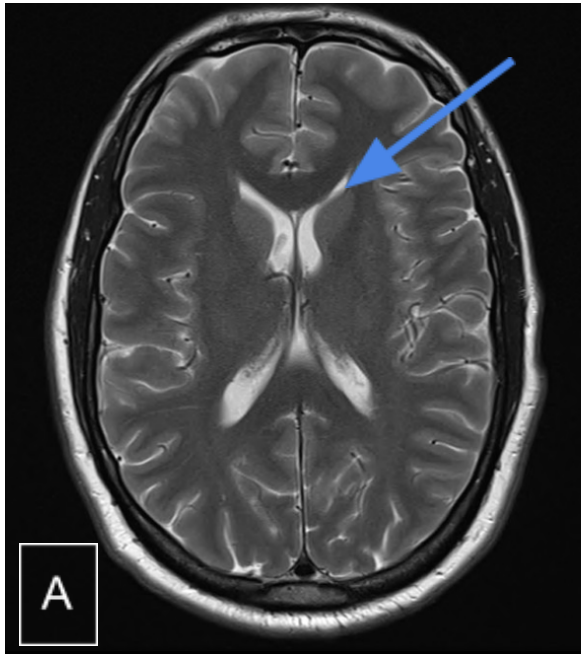


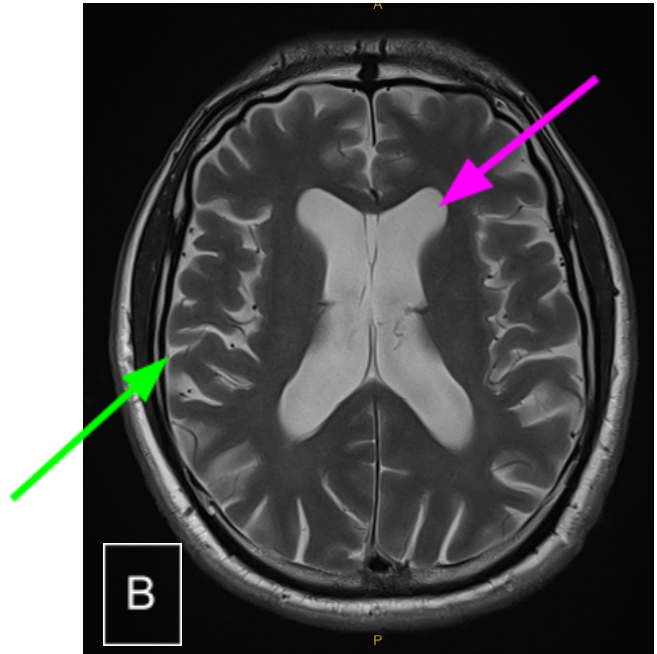
**Figure A:** MRI T2 weighted brain series in two patients (B. boxer age 54, C. footballer age 53) diagnosed with traumatic encephalopathy syndrome and suspected chronic traumatic encephalopathy (CTE) versus the normal brain (A. healthy male control age 54). Supplied with permission, Rowena Mobbs 2023.

**NORMAL BRAIN Age 54 male control**



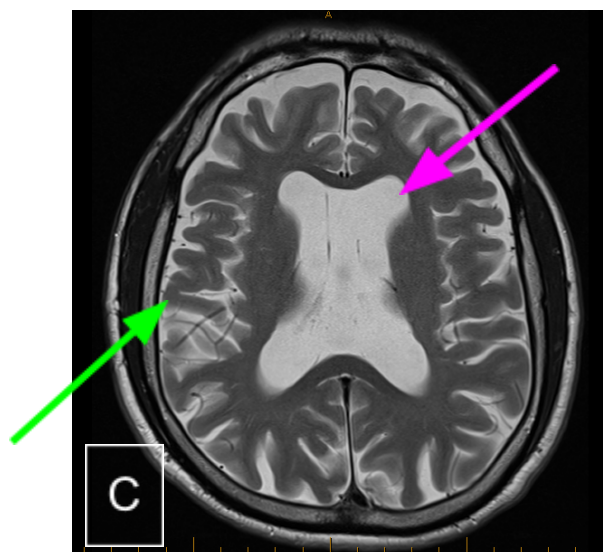
The white fluid-filled spaces (blue arrow) called ventricles are slit-like or narrow, indicating a normal volume of brain (A)

**CTE BRAIN Age 54 male boxer**



The white spaces are dilated (pink arrow) indicating a loss of brain tissue (green arrow)(B)

**CTE BRAIN Age 53 male football player**



The white spaces are dilated (pink arrow) indicating a loss of brain tissue (green arrow)(C)