

Overabundant sea urchins in Victoria



Healthy reefs are a vital part of Victoria's marine environment

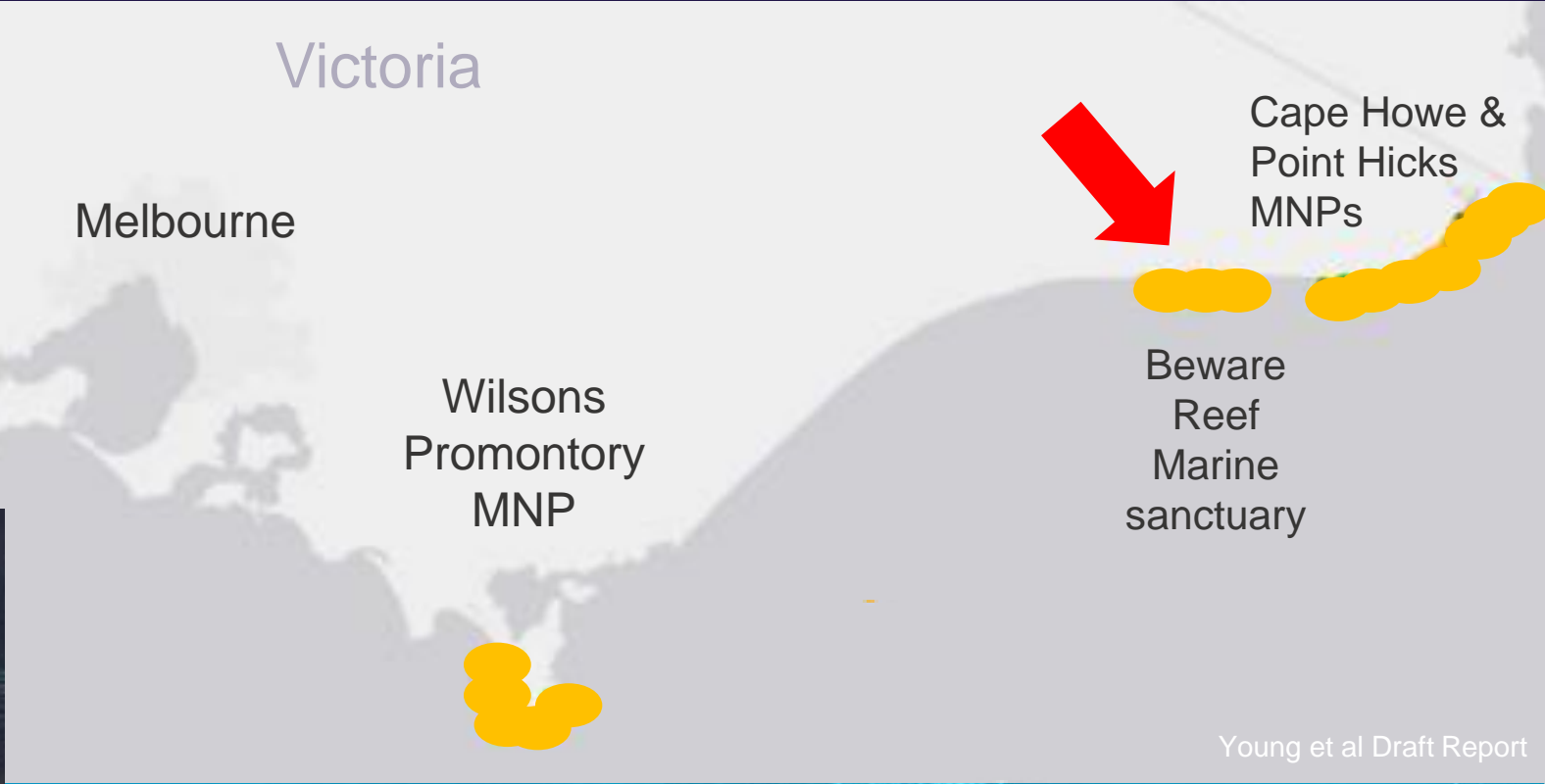


Kelp forests:

- provide **food, shelter and breeding grounds** for many fish and other marine species
- support economically and socially **important fisheries** e.g. abalone

1) Eastern Victoria

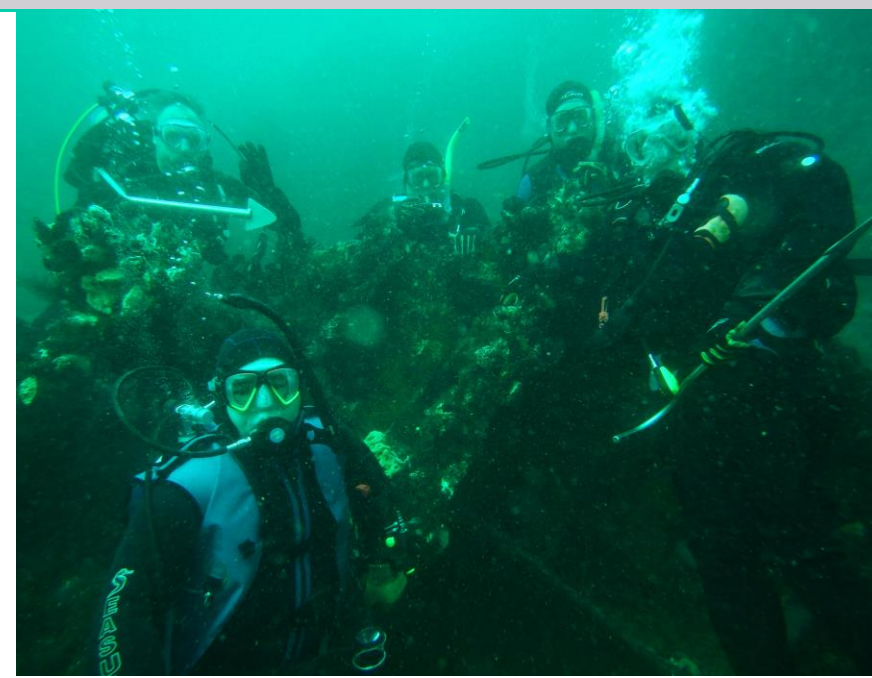
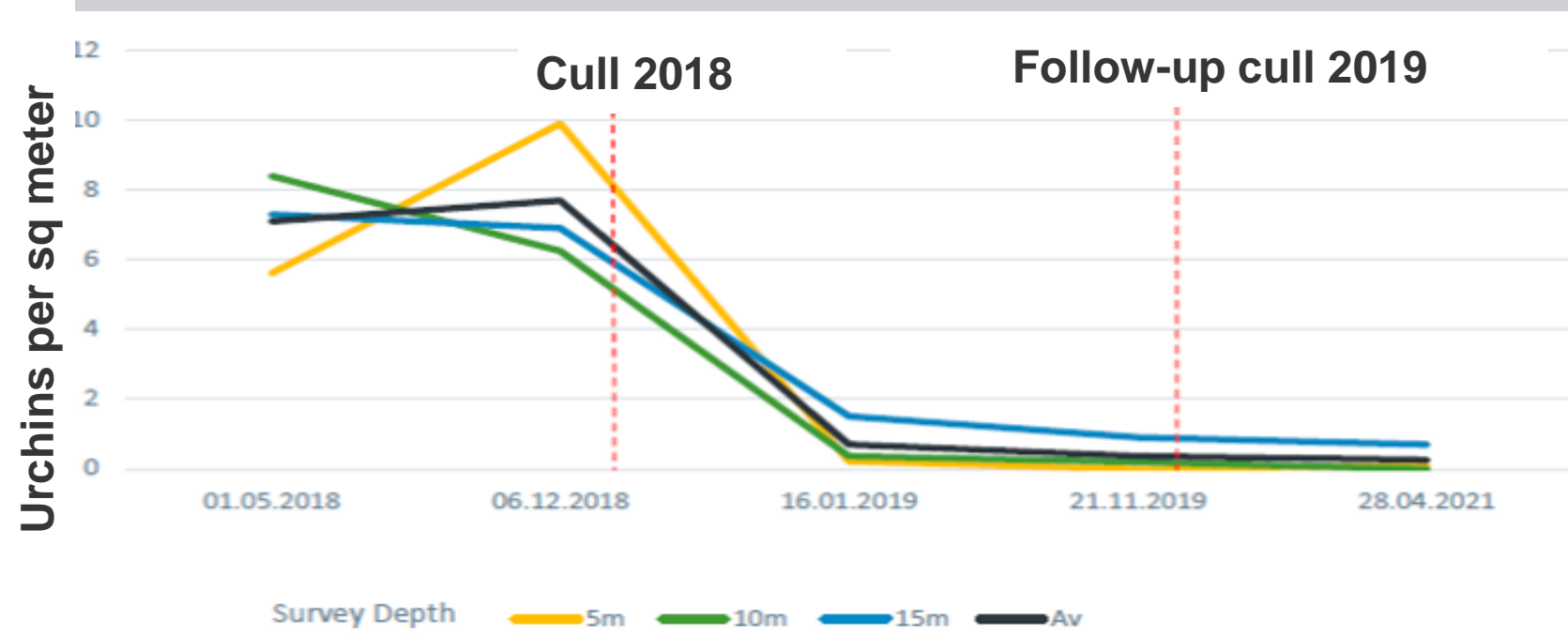
LONG-SPINED URCHIN
Centrostephanus rogersii



Credit: Parks Victoria

e.g. Beware Reef

1) Eastern Victoria



e.g. Williamstown

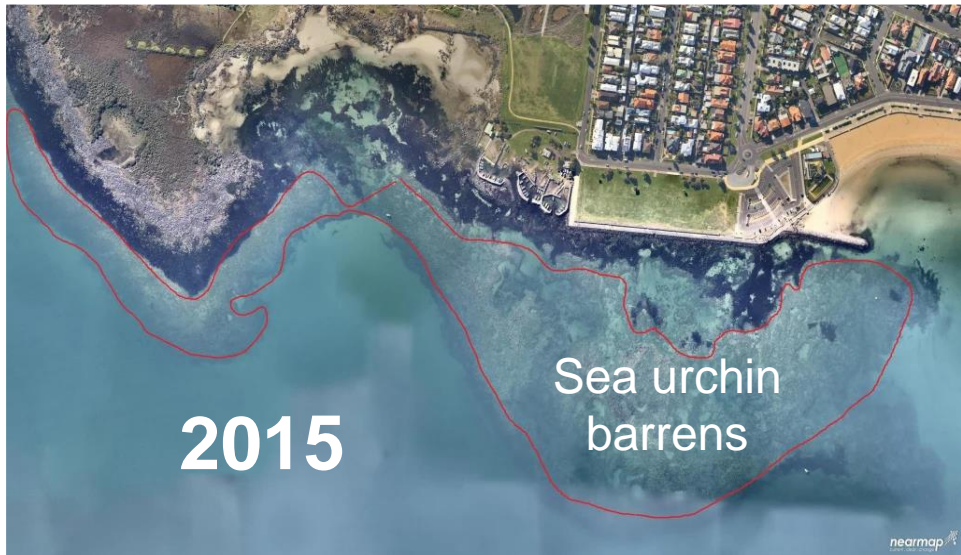
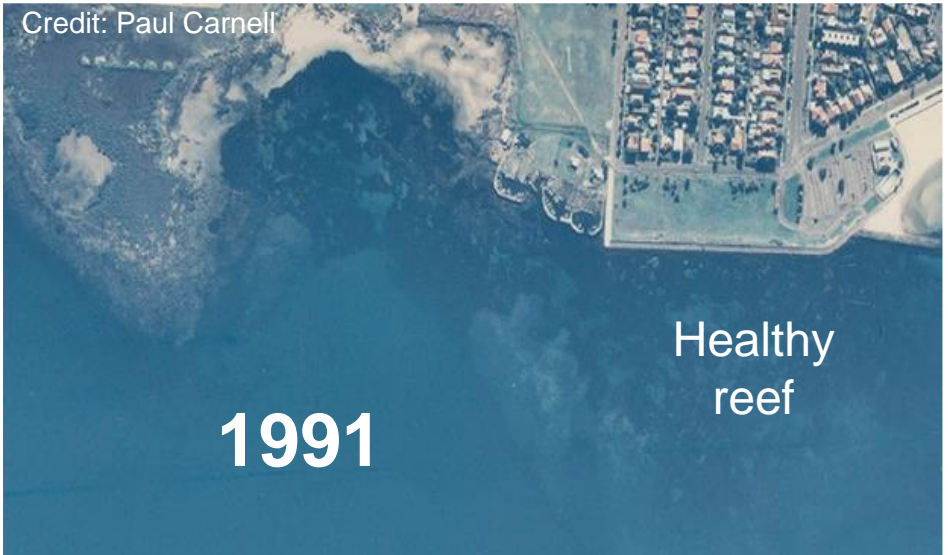
2) Port Phillip Bay

PURPLE-SPINED
URCHIN

*Heliocidaris
erythrogramma*



Young et al Draft Report



Ongoing actions

2) Port Phillip Bay

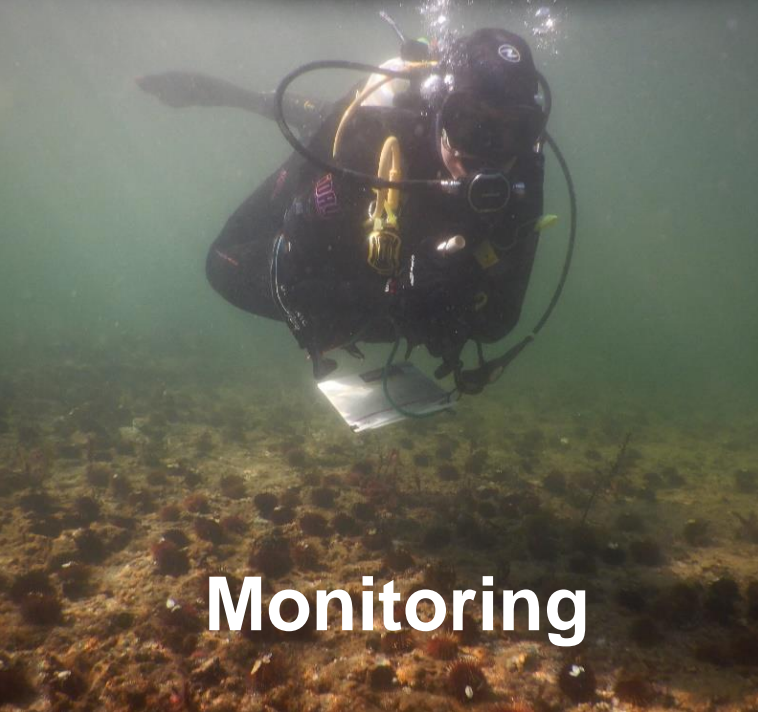
PURPLE SPINED
URCHIN
*Heliocidaris
erythrogramma*

Victoria

Melbourne



Community activation



Monitoring



Urchin culling



Kelp restoration trials

Credit: Tristan Graham



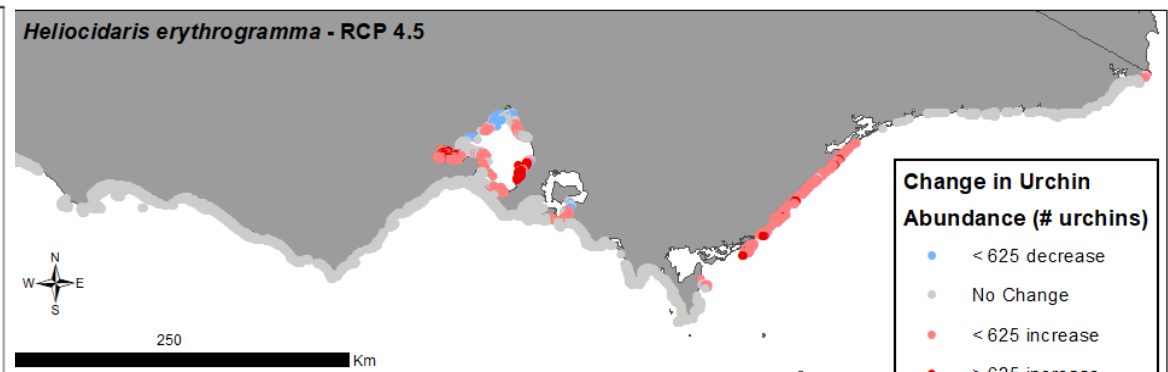
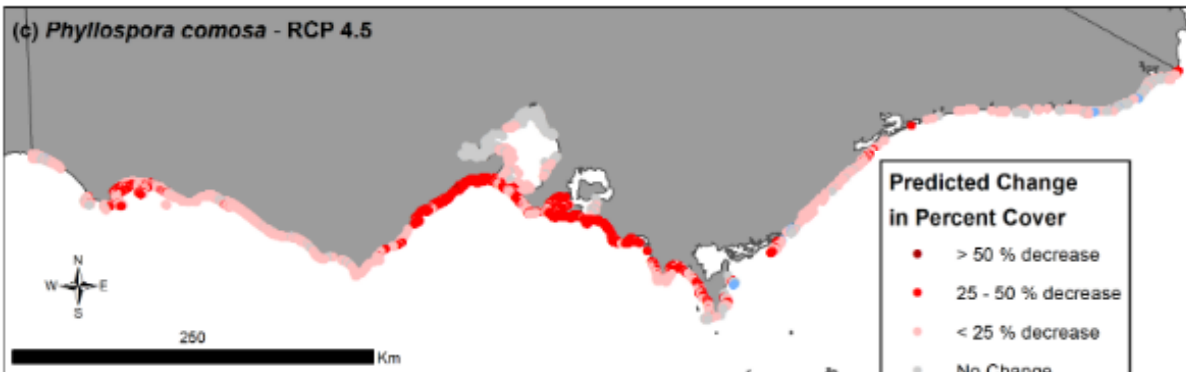
Kelp Restoration Handbook

Future: models show urchin expansion and kelp reduction under climate change scenarios

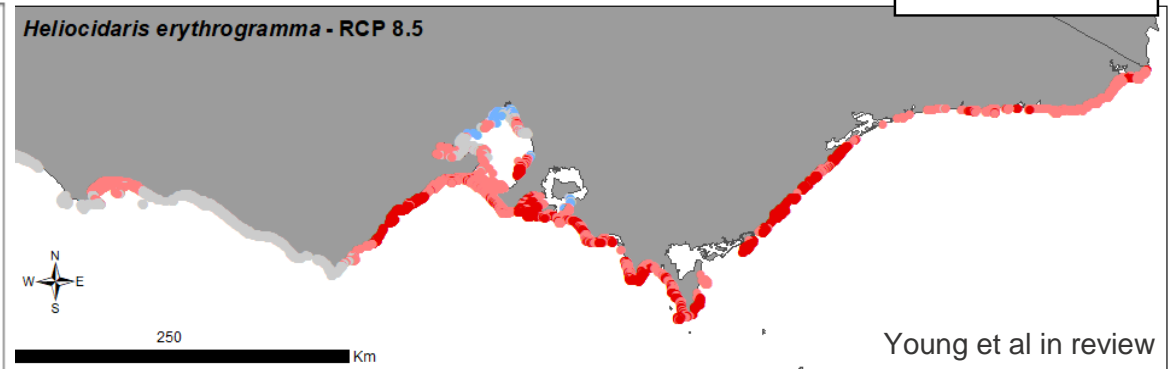
Kelp

Purple-spined urchins

RCP 4.5



RCP 8.5



Thank you



Energy,
Environment
and Climate Action

