

Petroleum Ships on the Water

Vessels carrying finished petroleum products (eg. petrol, diesel, jet fuel), crude oil, gas and petrochemicals are only shown in the following charts

Real Time Snapshots (March 2015)

Australian Waters, the Asia-Pacific Region,
Singapore Trading Hub and Indian Ocean

KEY:

- Orange** Vessels – carrying Petroleum Products (petrol, diesel, jet etc)
- Green** Vessels – carrying Crude Oil
- Pink & Blue** Vessels – LPG and LNG
- Yellow** & Other coloured Vessels – carrying Chemicals & Petrochemicals

Petroleum Ships on Water – Australian Waters (East Coast)

Real Time Snapshot (13 March 2015)

Each month, around **90 cargoes** of petroleum products (70) and crude oil (20) are imported into Australia.... **3 ships each day**

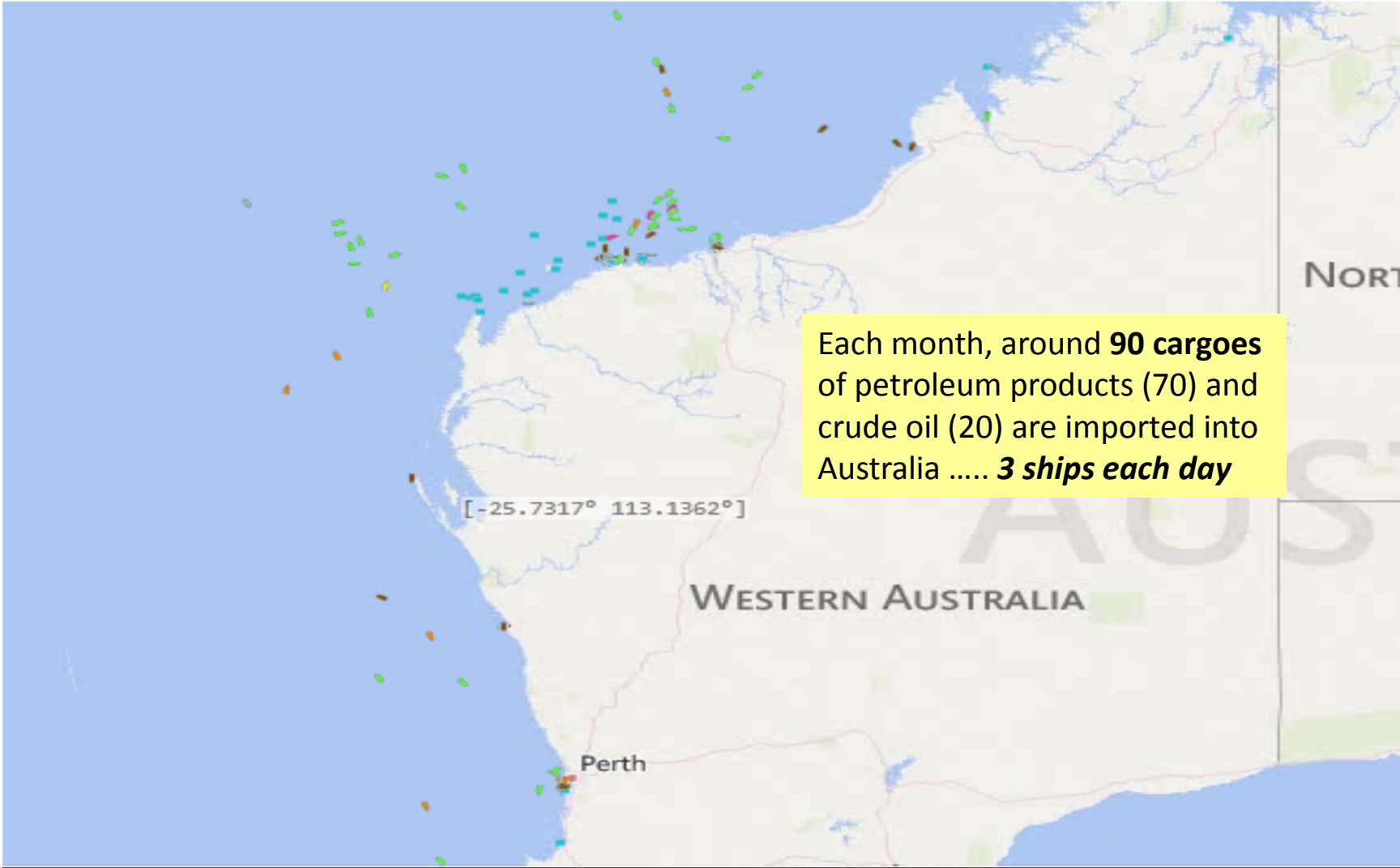
A petroleum ship/tanker carries a cargo of around 30-70ML of fuel (*National domestic fuel consumption is around 150ML a day*)



KEY:	Orange Vessels – carrying Petroleum Products (petrol, diesel, jet fuel)	Green Vessels – carrying Crude Oil
	Yellow & other colour Vessels – carrying Chemicals & Petrochemicals	Pink and Blue Vessels – LPG & LNG

Petroleum Ships on Water – Australian Waters (West Coast)

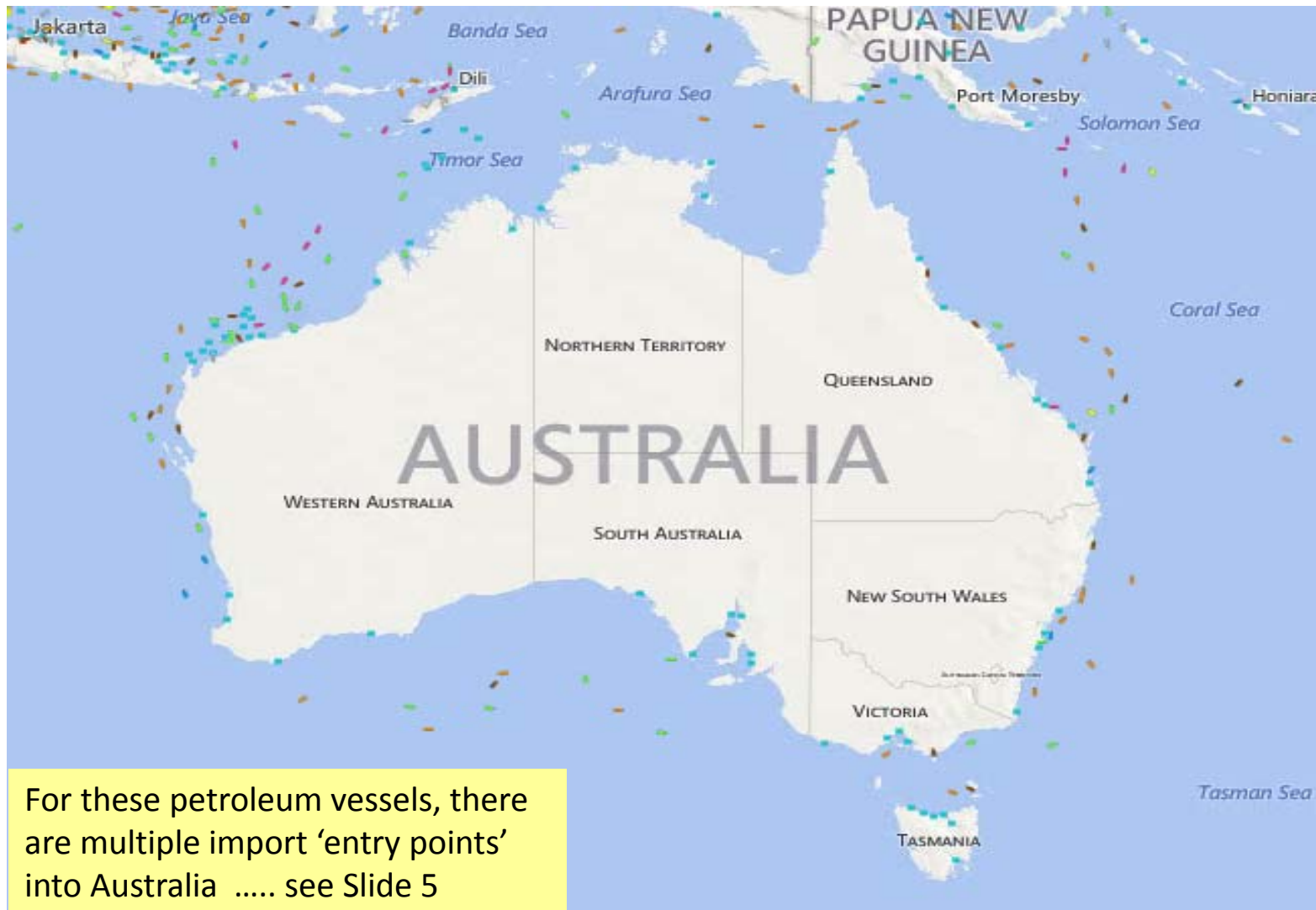
Real Time Snapshot (13 March 2015)



KEY:	Orange Vessels – carrying Petroleum Products (petrol, diesel, jet fuel)	Green Vessels – carrying Crude Oil
	Yellow & other colour Vessels – carrying Chemicals & Petrochemicals	Pink and Blue Vessels – LPG & LNG

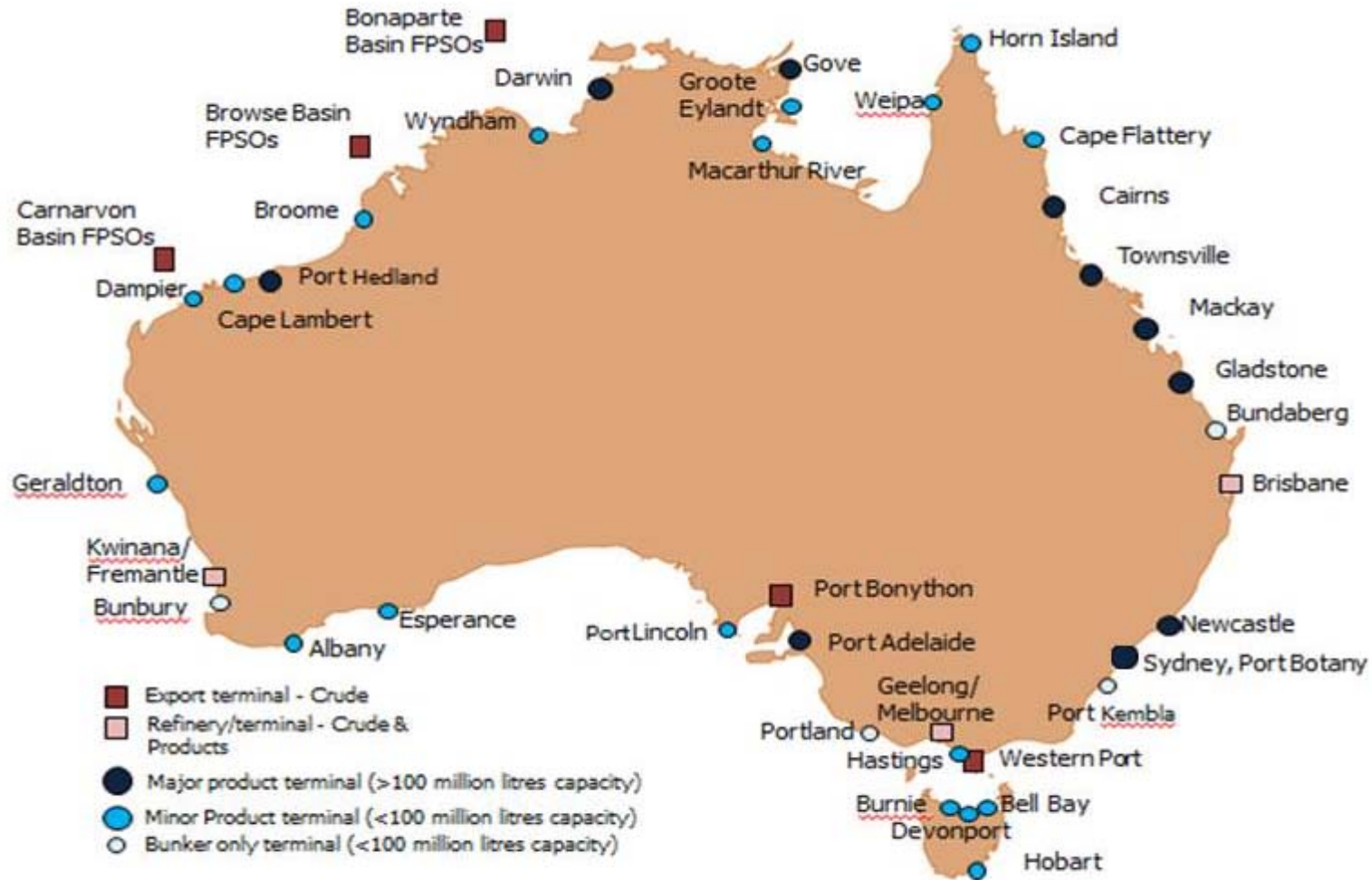
Petroleum Ships on Water – Australian Waters

Real Time Snapshot (24 March 2015)



KEY:	Orange Vessels – carrying Petroleum Products (petrol, diesel, jet fuel)	Green Vessels – carrying Crude Oil
	Yellow & other colour Vessels – carrying Chemicals & Petrochemicals	Pink and Blue Vessels – LPG & LNG

Multiple “Entry Points” to Australia for Petroleum Imports



Major capital cities (eg. Sydney, Brisbane and Melbourne) have multiple entry points and terminals for imports of petroleum products

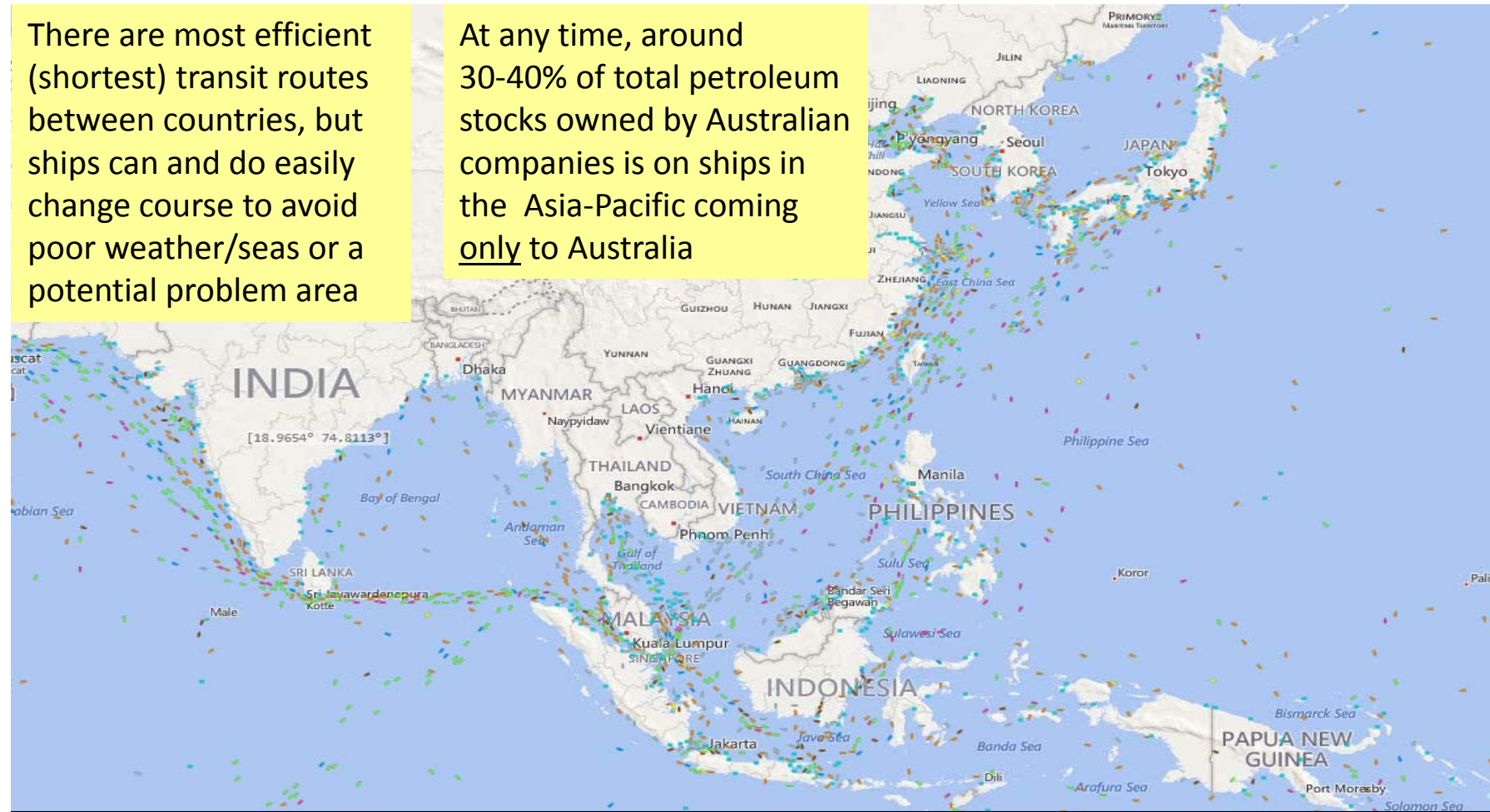
Petroleum Ships on Water – Asian Region

Real Time Snapshot (13 March 2015)

“It is difficult to think of a scenario that could actually disrupt, in a major and sustained way, the volume and diversity of this fuel trade flow and range of supply sources available?”

There are most efficient (shortest) transit routes between countries, but ships can and do easily change course to avoid poor weather/seas or a potential problem area

At any time, around 30-40% of total petroleum stocks owned by Australian companies is on ships in the Asia-Pacific coming only to Australia

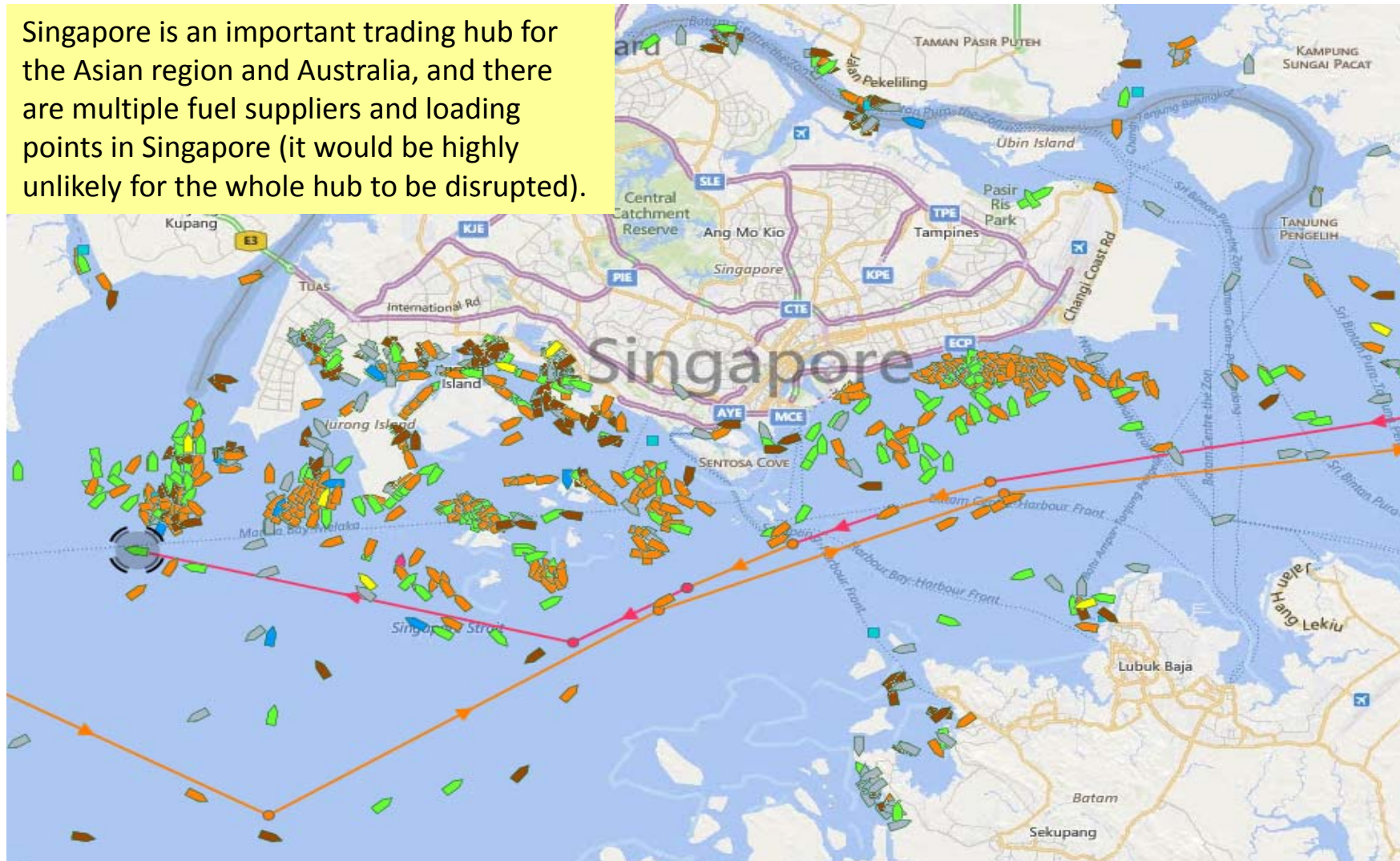


KEY:	Orange Vessels – carrying Petroleum Products (petrol, diesel, jet fuel)	Green Vessels – carrying Crude Oil
	Yellow & other colour Vessels – carrying Chemicals & Petrochemicals	Pink and Blue Vessels – LPG & LNG

Petroleum Ships on Water – Singapore Trading Hub

Real Time Snapshot (13 March 2015)

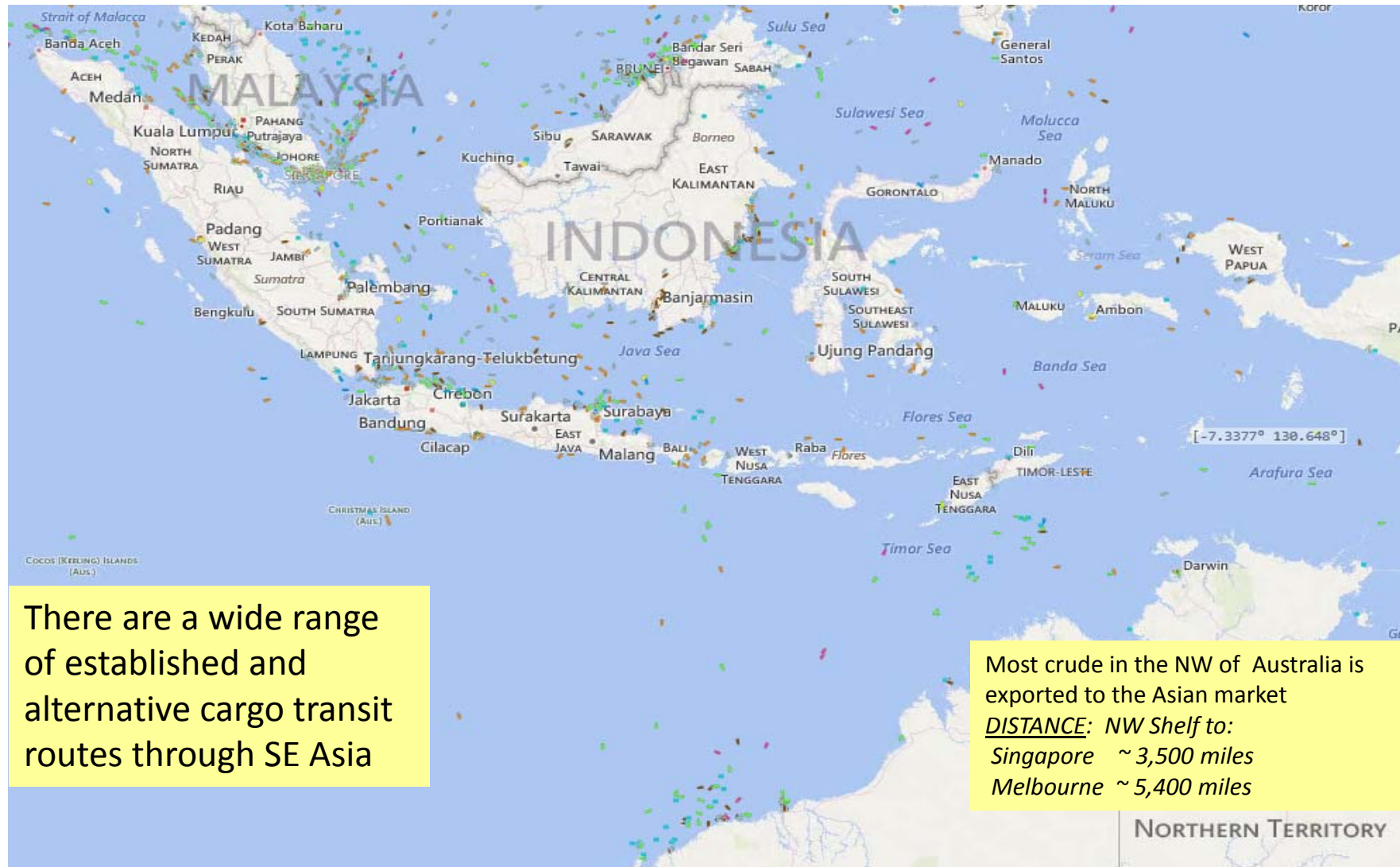
Singapore is an important trading hub for the Asian region and Australia, and there are multiple fuel suppliers and loading points in Singapore (it would be highly unlikely for the whole hub to be disrupted).



KEY:	Orange Vessels – carrying Petroleum Products (petrol, diesel, jet fuel)	Green Vessels – carrying Crude Oil
	Yellow & other colour Vessels – carrying Chemicals & Petrochemicals	Pink and Blue Vessels – LPG & LNG

Petroleum Ships on Water – South East Asia

Real Time Snapshot (20 March 2015)



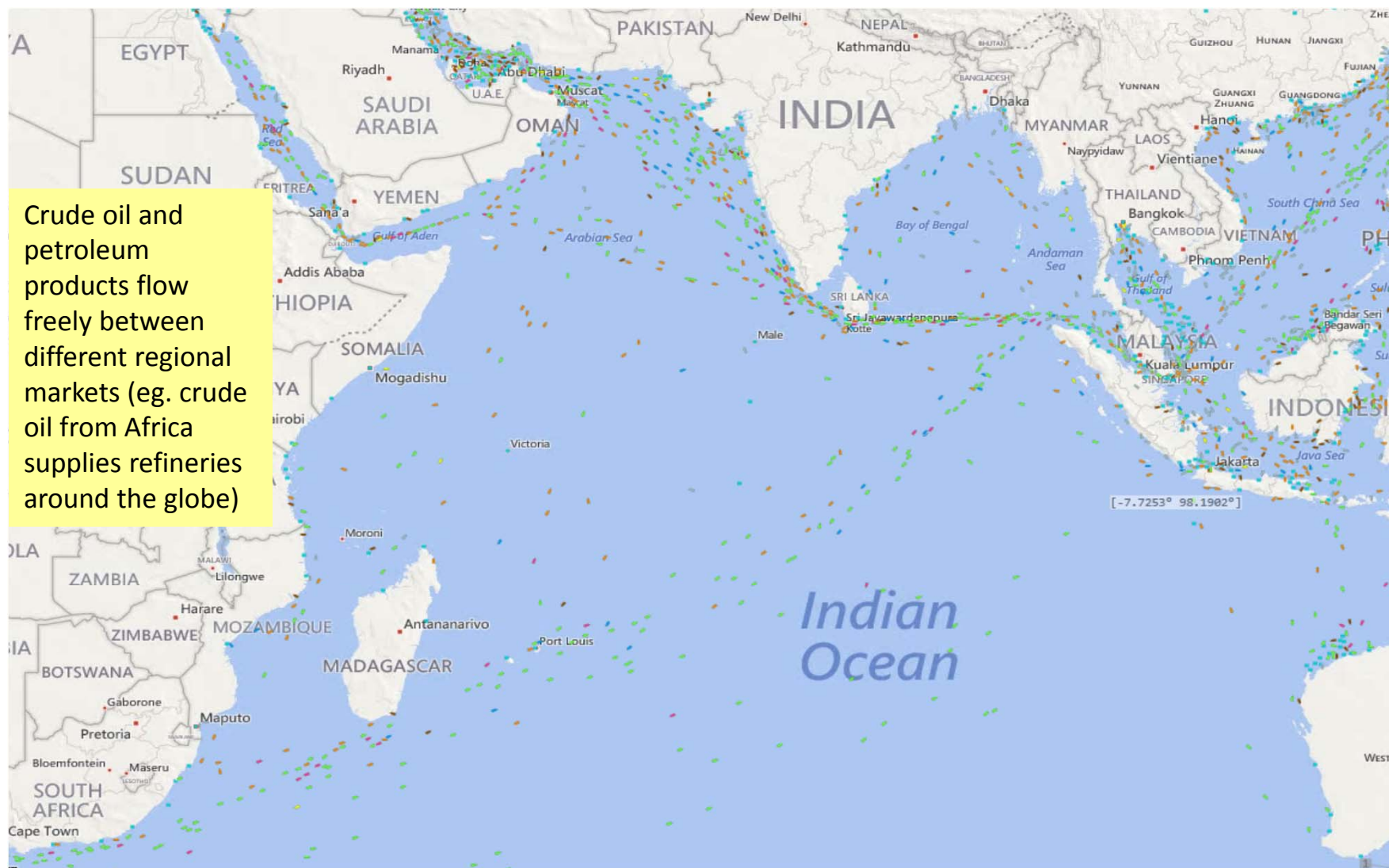
There are a wide range of established and alternative cargo transit routes through SE Asia

Most crude in the NW of Australia is exported to the Asian market
DISTANCE: NW Shelf to:
Singapore ~ 3,500 miles
Melbourne ~ 5,400 miles

KEY:	Orange Vessels – carrying Petroleum Products (petrol, diesel, jet fuel)	Green Vessels – carrying Crude Oil
	Yellow & other colour Vessels – carrying Chemicals & Petrochemicals	Pink and Blue Vessels – LPG & LNG

Petroleum Ships on Water – Indian Ocean

Real Time Snapshot (20 March 2015)



Crude oil and petroleum products flow freely between different regional markets (eg. crude oil from Africa supplies refineries around the globe)

KEY:	Orange Vessels – carrying Petroleum Products (petrol, diesel, jet fuel)	Green Vessels – carrying Crude Oil
	Yellow & other colour Vessels – carrying Chemicals & Petrochemicals	Pink and Blue Vessels – LPG & LNG